



**wood.**

**Drawing Attachment**

**Constraints and  
Opportunities**

		<b>LIMITS</b>						
			<b>OPPORTUNITY</b>	<b>INFORMATION</b>	<b>OPPORTUNITY</b>	<b>OPPORTUNITY</b>	<b>INFORMATION</b>	
			Signal improvements, turn lanes	New development	Warrant for traffic signals	Pedestrian crossing	Designated heritage property Walton Memorial United Church. 2489 Lakeshore Road West	

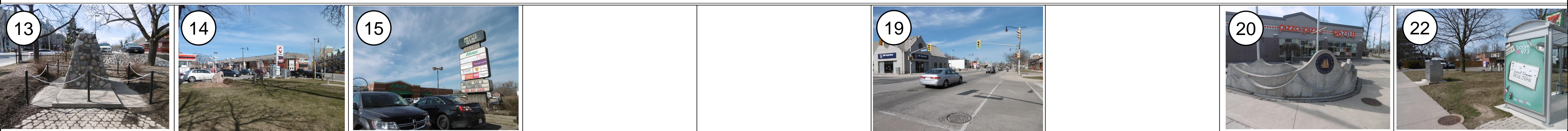


		<b>STUDY</b>						
				<b>INFORMATION</b>	<b>CONSTRAINT</b>	<b>INFORMATION</b>	<b>INFORMATION</b>	<b>INFORMATION</b>
				Listed heritage property Bronte Beach Park 3014 Lakeshore Road West	Bronte Creek Bridge	Bronte Harbour Yacht Club	Listed heritage property – Chris Vokes Memorial Park Bronte Cenotaph 2500 Lakeshore Road West	Bronte Harbour Marina

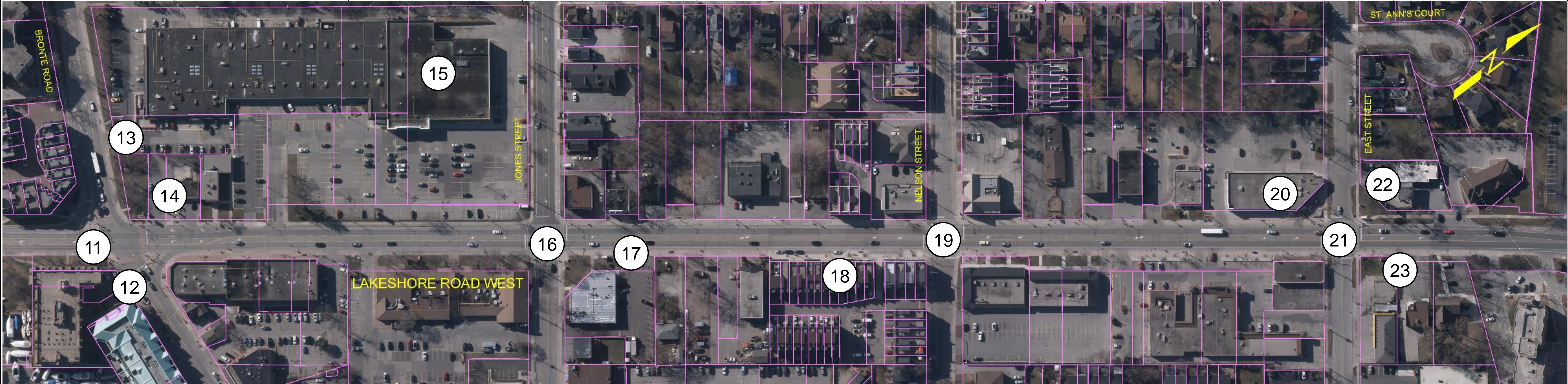
# Lakeshore Road West Class Environmental Assessment

PIC No. 1

Date: April 2017



<b>CONSTRAINT</b>	<b>INFORMATION</b>	<b>INFORMATION</b>			<b>OPPORTUNITY</b>		<b>CONSTRAINT</b>	<b>INFORMATION</b>
Listed heritage property – Bronte Gore Park Bronte Cenotaph 2457 Lakeshore Road West	Gas station	Bronte Village Mall			Nelson Street signal improvements		Gateway feature	Controller box, bus shelter



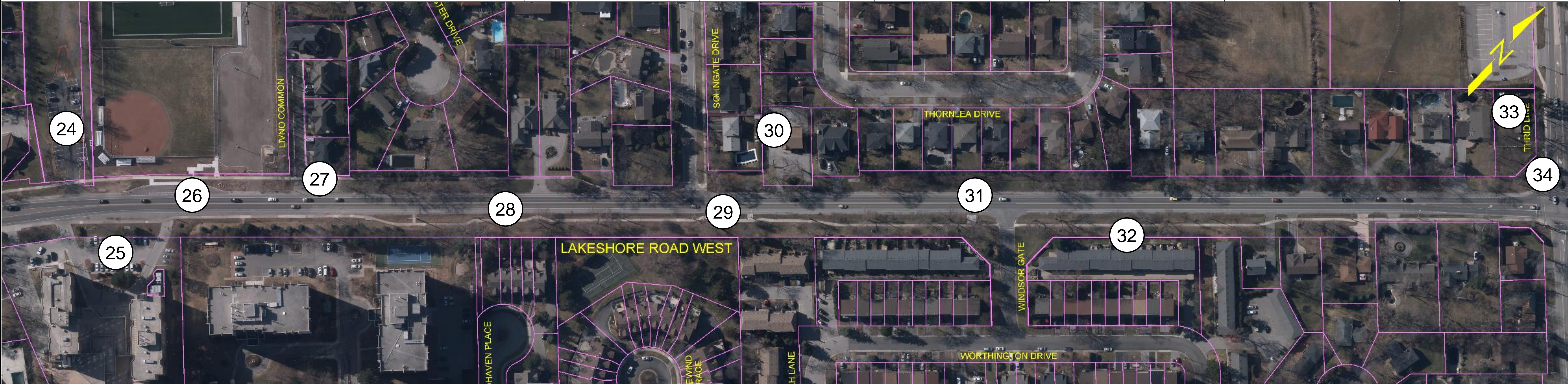
<b>OPPORTUNITY</b>	<b>OPPORTUNITY</b>	<b>OPPORTUNITY</b>	<b>OPPORTUNITY</b>	<b>OPPORTUNITY</b>	<b>CONSTRAINT/OPPORTUNITY</b>		<b>OPPORTUNITY</b>	<b>INFORMATION</b>
Bronte Road intersection is skewed	Truck tracking from eastbound left turning trucks	Phased right turn	Jones Street signal improvements	Back of curb improvements, inconsistent 1m slash pad	On-street parking		East Street signal improvements	Bronte Village concrete sign








# Lakeshore Road West Class Environmental Assessment

PIC No. 1

Date: April 2017

								
<b>CONCERN</b>	<b>INFORMATION</b>	<b>INFORMATION</b>		<b>INFORMATION</b>				<b>INFORMATION</b>
Overflow parking for Oakville Community Residence, pedestrian crossing concern	New school bus drop off area	Livno Common, new construction		New Apostolic Church				Listed heritage property, 2003 Lakeshore Road West






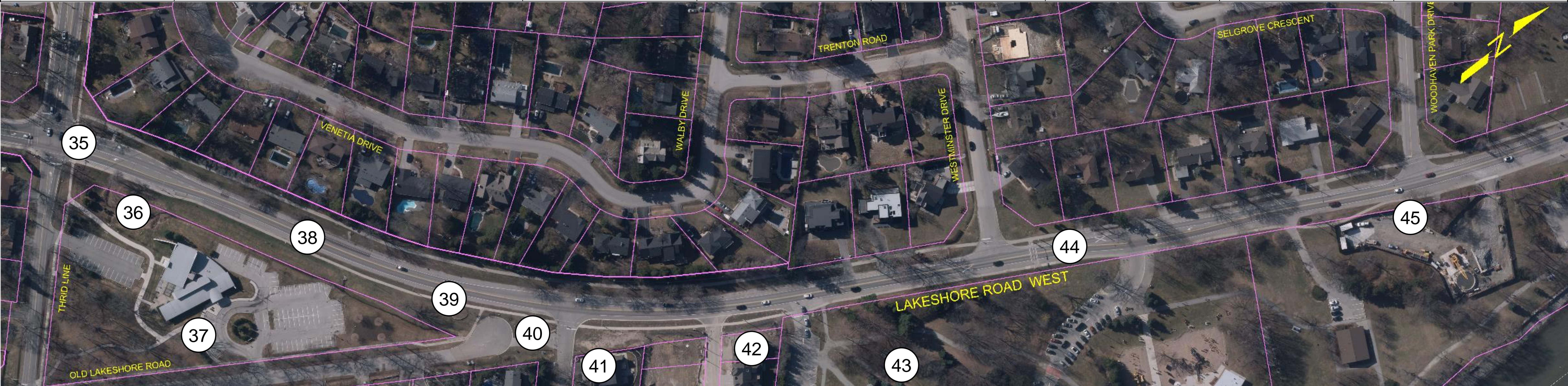
								
<b>CONCERN</b>		<b>OPPORTUNITY</b>	<b>CONSTRAINT</b>	<b>INFORMATION</b>	<b>INFORMATION</b>	<b>INFORMATION</b>		<b>OPPORTUNITY</b>
Oakville Senior Citizen Residence		Trail to road, wooden fence	Mature trees and hydro poles	Bus pad and hydro pole	Fence	Windsor Court		Bike lane ends and goes north









# Lakeshore Road West Class Environmental Assessment





PIC No. 1

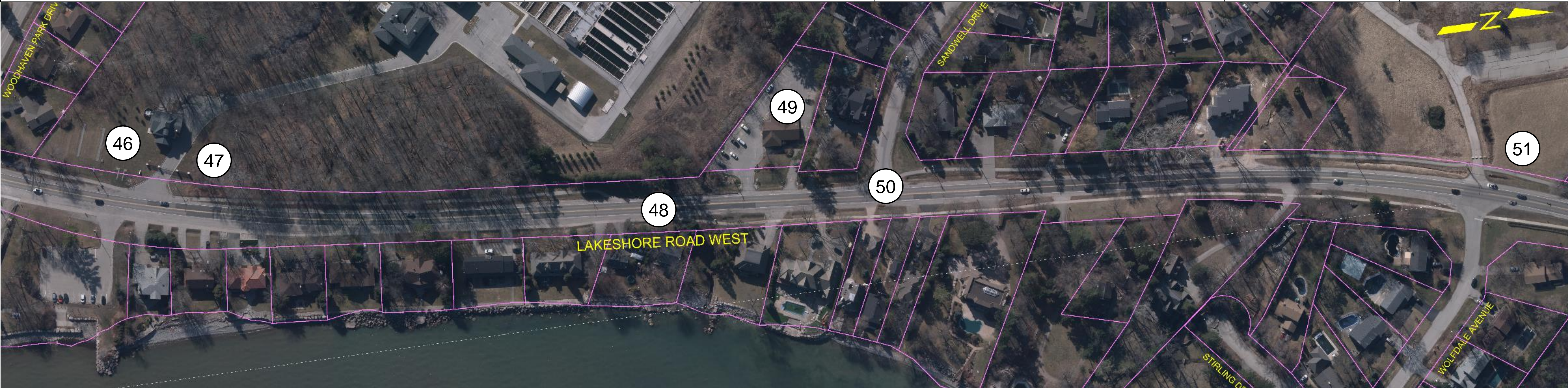
Date: April 2017



								
<p><b>OPPORTUNITY</b></p> <ul style="list-style-type: none"> <li>Third Line signal improvements.</li> <li>Sight line issues for turning vehicles</li> </ul>	<p><b>INFORMATION</b></p> <p>Concrete storm water crossing</p>					<p><b>OPPORTUNITY</b></p> <p>Pedestrian signal</p>		






								
<p><b>INFORMATION</b></p> <p>Sir John Colbourne Park, new garden</p>	<p><b>INFORMATION</b></p> <p>Sir John Colbourne Seniors Center</p>	<p><b>INFORMATION</b></p> <p>Parkette garden</p>	<p><b>OPPORTUNITY</b></p> <p>Improve storm water issues</p>	<p><b>OPPORTUNITY</b></p> <p>New subdivision</p>	<p><b>INFORMATION</b></p> <p>New street – Hamlet Common</p>	<p><b>INFORMATION</b></p> <p>Coronation Park – Waterfront Trail</p>		<p><b>INFORMATION</b></p> <p>Listed heritage property- 1426 Lakeshore Road West</p>




								
<p><b>INFORMATION</b></p> <p>New waste water treatment plant</p>	<p><b>INFORMATION</b></p> <p>Access to waste water treatment plant</p>			<p><b>INFORMATION</b></p> <p>Kingdom Hall of Jehovah's Witnesses</p>				<p><b>INFORMATION</b></p> <p>New development</p>



								
			<p><b>OPPORTUNITY</b></p> <p>Washout area – storm water improvements</p>		<p><b>OPPORTUNITY</b></p> <p>Need for pedestrian crossing</p>			

							
	<b>OPPORTUNITY</b>					<b>INFORMATION</b>	<b>INFORMATION</b>
	Sidewalk tie in to bridge, opportunity to improve pedestrian crossing					Wide shoulder	Westgate Park



							
<b>INFORMATION</b>		<b>INFORMATION</b>	<b>OPPORTUNITY</b>				
14 Mile Creek Bridge		Listed heritage property 1110 Lakeshore Road West	Improve storm water				

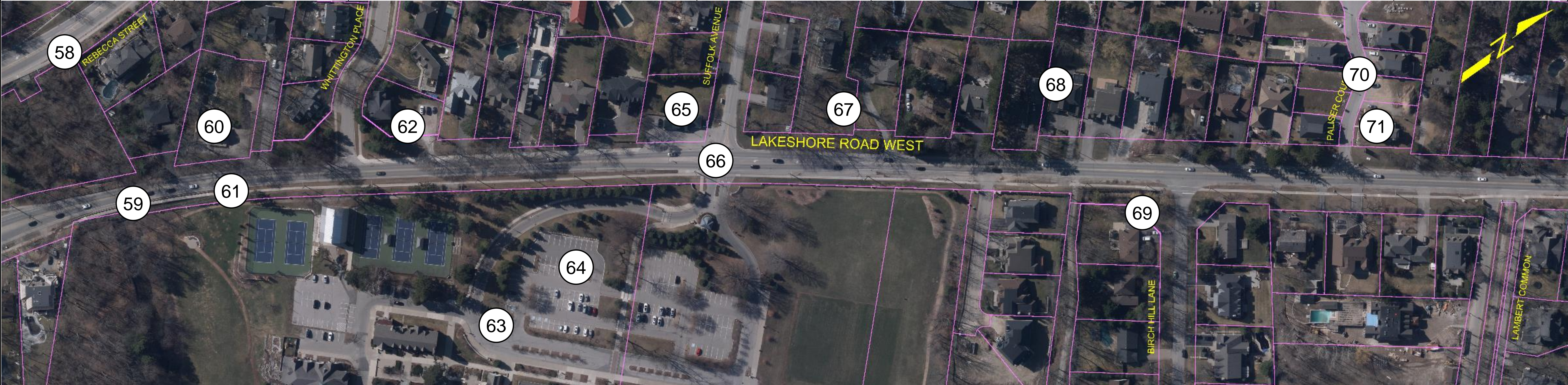
# Lakeshore Road West Class Environmental Assessment

PIC No. 1

Date: April 2017






<b>58</b> <b>OPPORTUNITY</b>	<b>60</b> <b>INFORMATION</b>	<b>62</b> <b>INFORMATION</b>	<b>65</b> <b>INFORMATION</b>	<b>67</b> <b>INFORMATION</b>		<b>68</b> <b>INFORMATION</b>	<b>70</b> <b>INFORMATION</b>	<b>71</b> <b>INFORMATION</b>
Rebecca Street crossing	Designated heritage property– The Acacias, 573 Lakeshore Road West	Designated heritage property– Old McCraney House, 549 Lakeshore Road West	Okhee's corner store	Heritage listed property 491 Lakeshore Road West		West Wind Montessori School	Paliser Court – New Development	Designated heritage property– 105 Paliser Court







<b>59</b> <b>INFORMATION</b>	<b>61</b> <b>OPPORTUNITY</b>	<b>63</b> <b>INFORMATION</b>	<b>64</b> <b>OPPORTUNITY</b>	<b>66</b> <b>OPPORTUNITY</b>		<b>69</b> <b>OPPORTUNITY</b>		
McCraney Creek crossing	Raised island	Listed heritage property– Appleby College 540 Lakeshore Road West	Appleby College	Suffolk Avenue intersection improvements		Raised island		



						<p><b>LIMITS</b></p>	
<p><b>INFORMATION</b></p> <p>Listed heritage property- 369 Lakeshore Road West</p>			<p><b>INFORMATION</b></p> <p>St. Thomas Aquinas Catholic School</p>		<p><b>OPPORTUNITY</b></p> <p>Improvements to the Dorval Drive signalized intersection</p>		



						<p><b>STUDY</b></p>	
<p><b>OPPORTUNITY</b></p> <p>Pedestrian issues, signalize</p>	<p><b>INFORMATION</b></p> <p>Listed heritage property – 372 Lakeshore Road West</p>	<p><b>INFORMATION</b></p> <p>Listed heritage property – 355 Lakeshore Road West</p>			<p><b>CONSTRAINT</b></p> <p>Designated heritage property– St. Jude Cemetery 258 Lakeshore Road West</p>		