

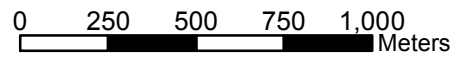
Appendix A - Approximate location of the Conservation Authorities Regulation Limits
Map No. 1

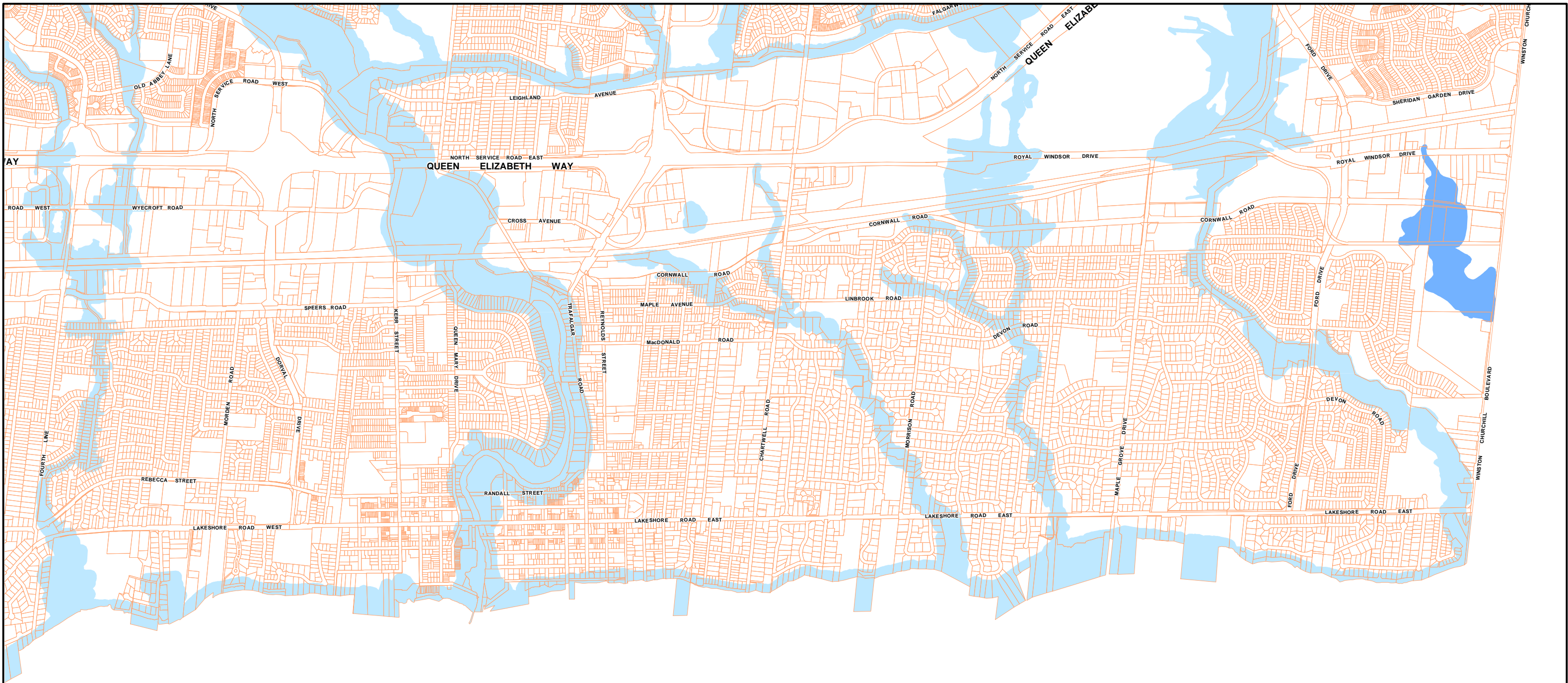
The overlays on this map represent the limits of Conservation Halton's and the Credit Valley Conservation Authority's "Approximate Regulation Limit." Within these lands, a development permit may be required by the applicable Conservation Authority prior to a building permit being issued by the Town.

Contact the zoning section of the Town's Building Services department or a planner at the applicable Conservation Authority for more information.

- Conservation Halton Approximate Regulation Limit
- Credit Valley Conservation Authority Approximate Regulation Limit

TOWN OF OAKVILLE
Zoning By-laws 2009-189 and 2014-014
Community Development Commission
Strategic Business Support





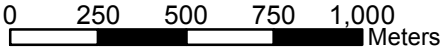
Appendix A - Approximate location of the Conservation Authorities Regulation Limits
Map No. 2

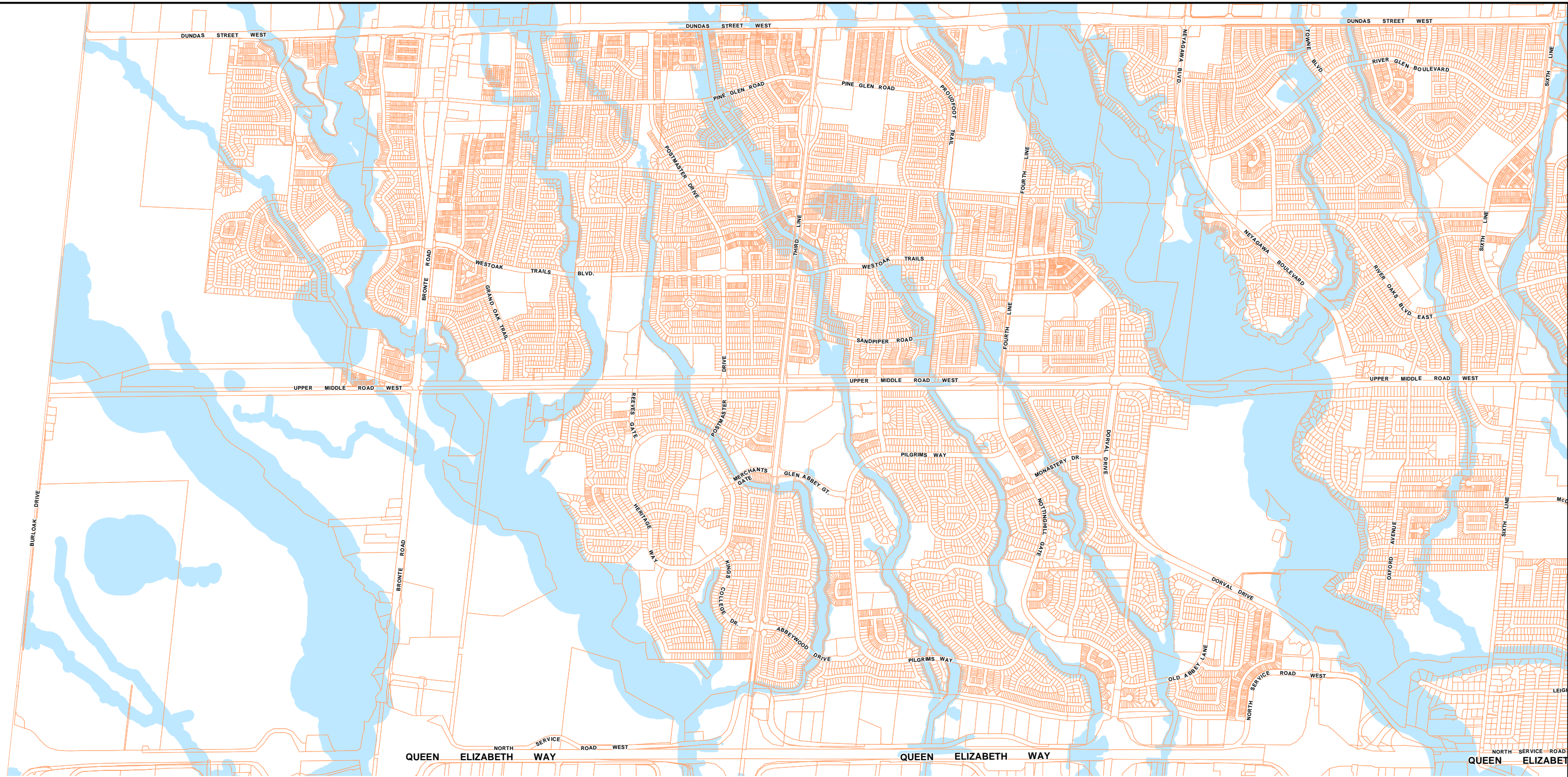
The overlays on this map represent the limits of Conservation Halton's and the Credit Valley Conservation Authority's "Approximate Regulation Limit." Within these lands, a development permit may be required by the applicable Conservation Authority prior to a building permit being issued by the Town.

Contact the zoning section of the Town's Building Services department or a planner at the applicable Conservation Authority for more information.

- Conservation Halton Approximate Regulation Limit
- Credit Valley Conservation Authority Approximate Regulation Limit

TOWN OF OAKVILLE
Zoning By-laws 2009-189 and 2014-014
Community Development Commission
Strategic Business Support





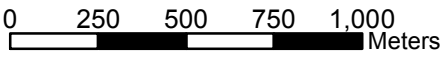
Appendix A - Approximate location of the Conservation Authorities Regulation Limits
 Map No. 3

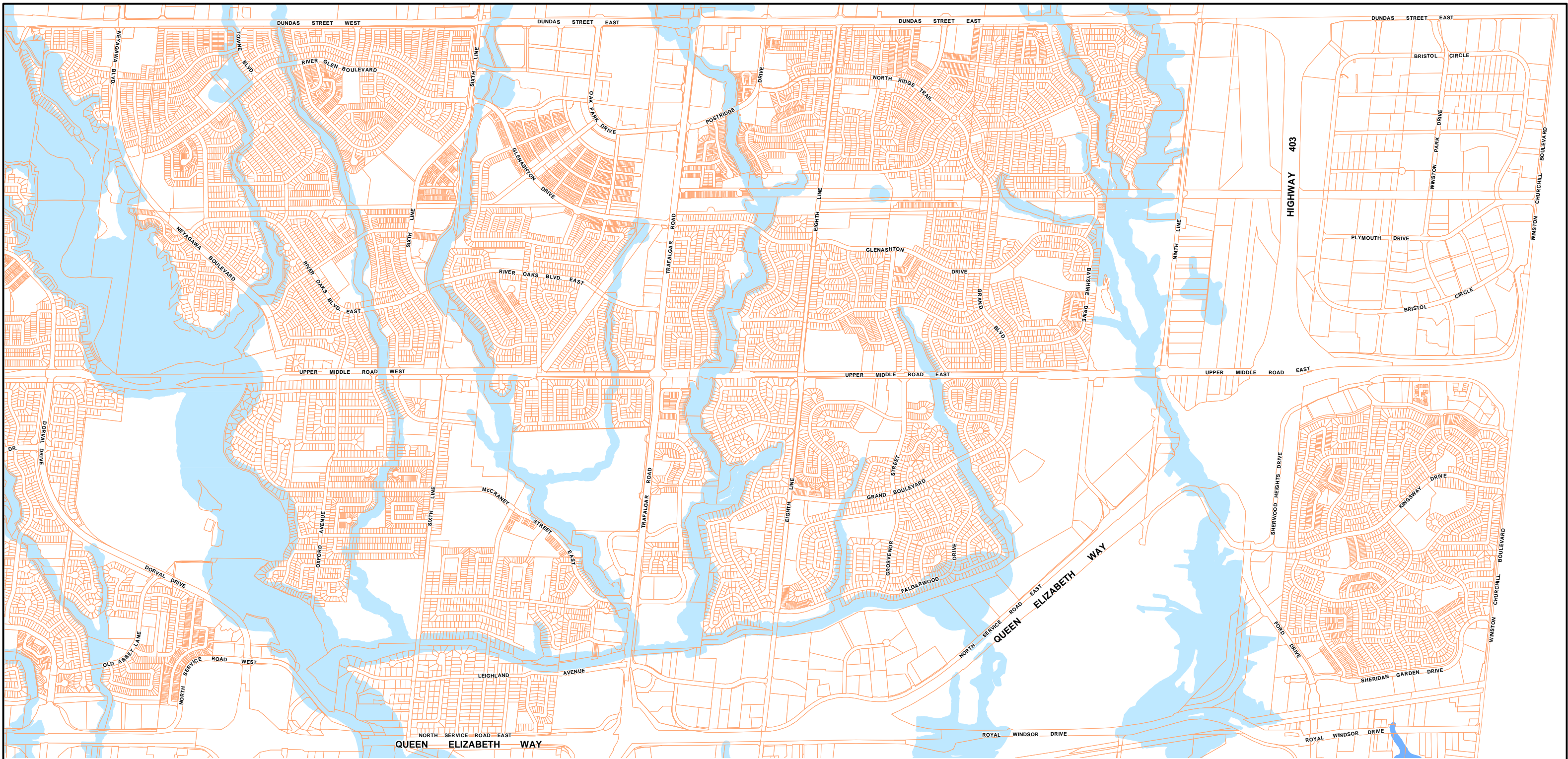
The overlays on this map represent the limits of Conservation Halton's and the Credit Valley Conservation Authority's "Approximate Regulation Limit." Within these lands, a development permit may be required by the applicable Conservation Authority prior to a building permit being issued by the Town.

Contact the zoning section of the Town's Building Services department or a planner at the applicable Conservation Authority for more information.

- Conservation Halton Approximate Regulation Limit
- Credit Valley Conservation Authority Approximate Regulation Limit

TOWN OF OAKVILLE
Zoning By-laws 2009-189 and 2014-014
 Community Development Commission
 Strategic Business Support





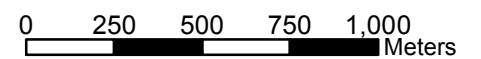
Appendix A - Approximate location of the Conservation Authorities Regulation Limits
Map No. 4

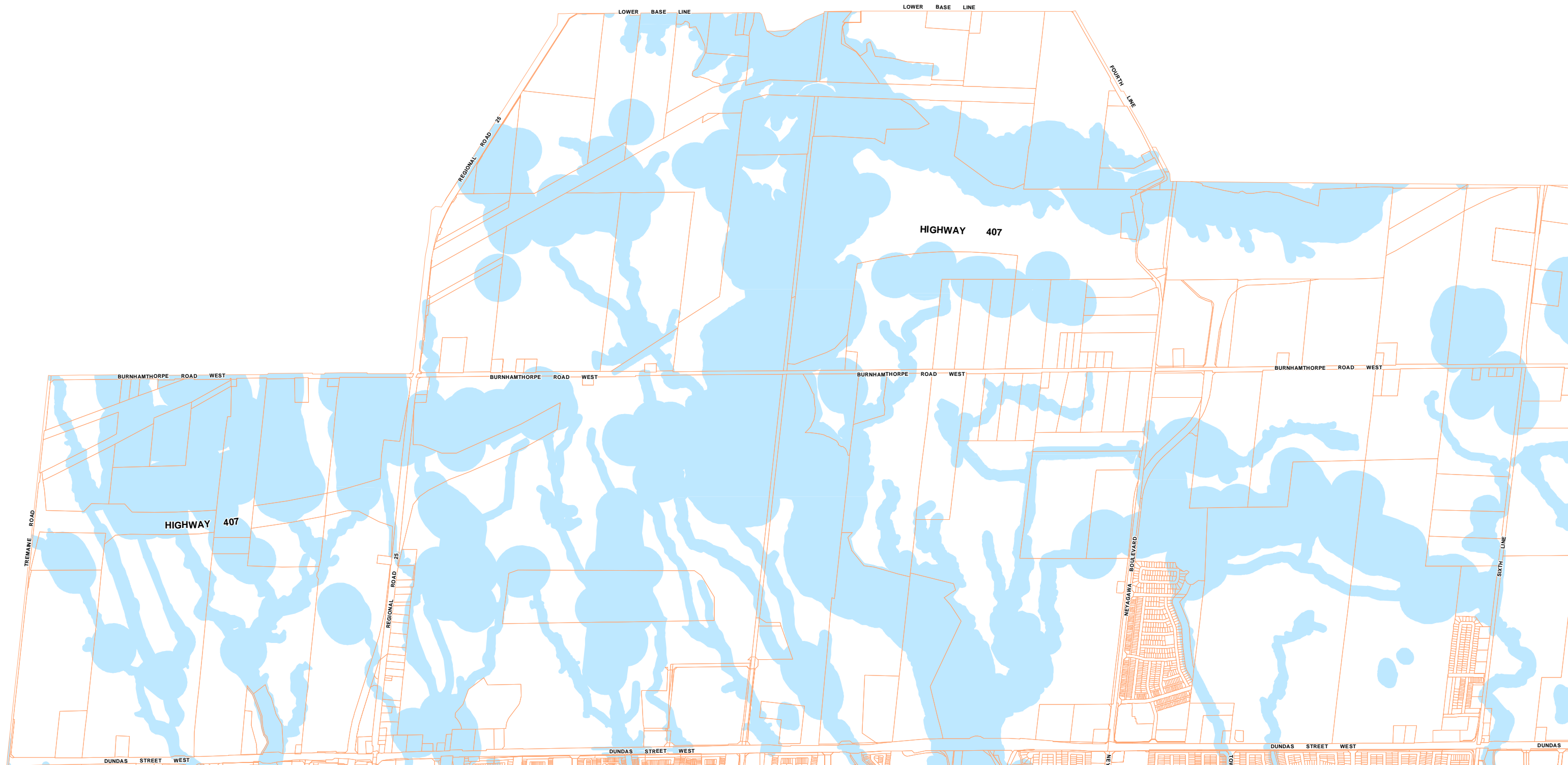
The overlays on this map represent the limits of Conservation Halton's and the Credit Valley Conservation Authority's "Approximate Regulation Limit." Within these lands, a development permit may be required by the applicable Conservation Authority prior to a building permit being issued by the Town.

Contact the zoning section of the Town's Building Services department or a planner at the applicable Conservation Authority for more information.

- Conservation Halton
Approximate Regulation Limit
- Credit Valley Conservation Authority
Approximate Regulation Limit

TOWN OF OAKVILLE
Zoning By-laws 2009-189 and 2014-014
Community Development Commission
Strategic Business Support



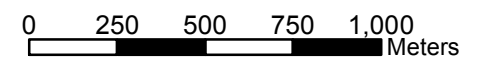


The overlays on this map represent the limits of Conservation Halton's and the Credit Valley Conservation Authority's "Approximate Regulation Limit." Within these lands, a development permit may be required by the applicable Conservation Authority prior to a building permit being issued by the Town.

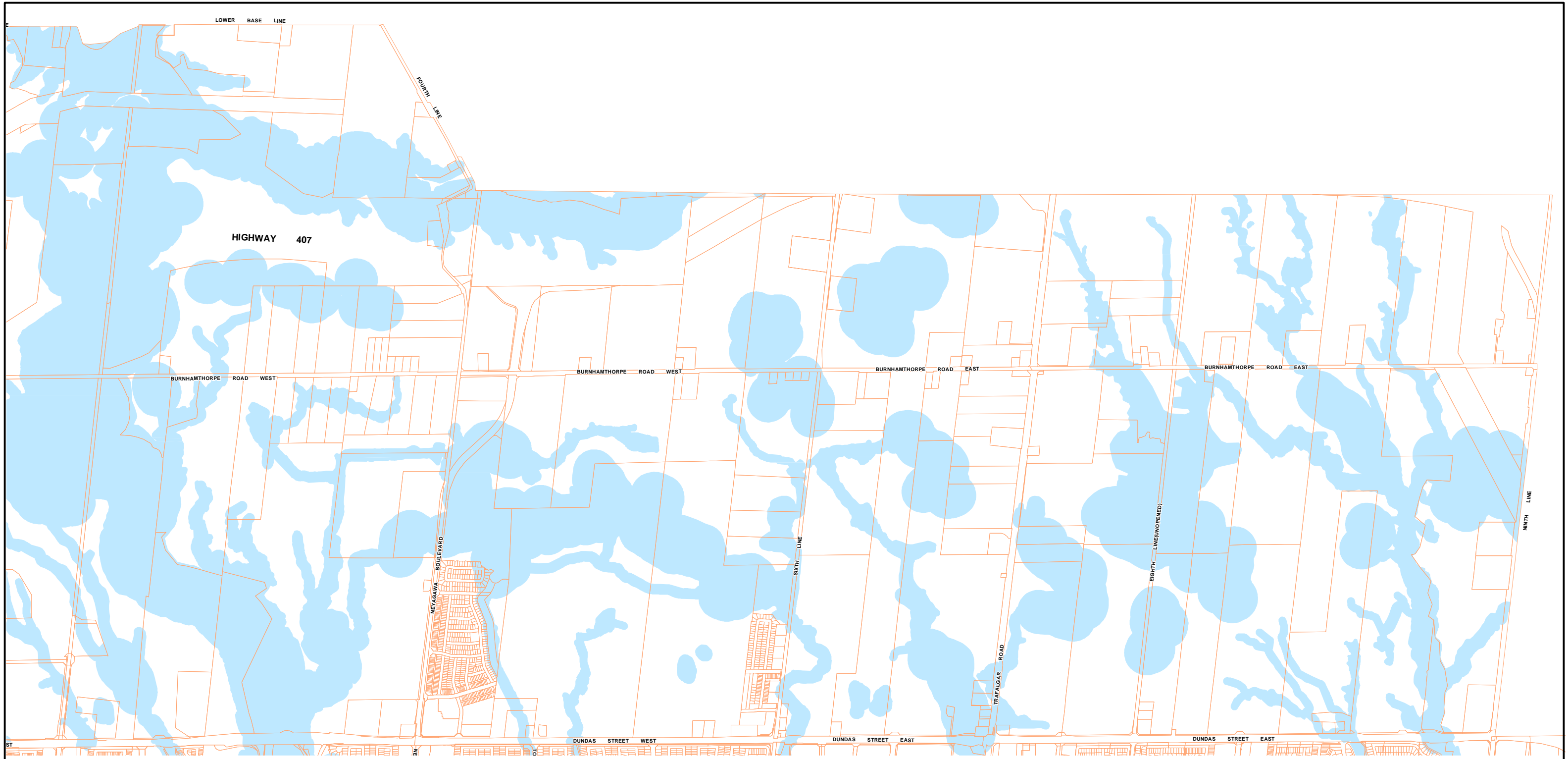
Contact the zoning section of the Town's Building Services department or a planner at the applicable Conservation Authority for more information.

- Conservation Halton Approximate Regulation Limit
- Credit Valley Conservation Authority Approximate Regulation Limit

TOWN OF OAKVILLE
Zoning By-laws 2009-189 and 2014-014
Community Development Commission
Strategic Business Support



Appendix A - Approximate location of the Conservation Authorities Regulation Limits
Map No. 5



Appendix A - Approximate location of the Conservation Authorities Regulation Limits
Map No. 6

The overlays on this map represent the limits of Conservation Halton's and the Credit Valley Conservation Authority's "Approximate Regulation Limit." Within these lands, a development permit may be required by the applicable Conservation Authority prior to a building permit being issued by the Town.

Contact the zoning section of the Town's Building Services department or a planner at the applicable Conservation Authority for more information.

- Conservation Halton Approximate Regulation Limit
- Credit Valley Conservation Authority Approximate Regulation Limit

TOWN OF OAKVILLE
Zoning By-laws 2009-189 and 2014-014
Community Development Commission
Strategic Business Support

