

CLIENT



ASC (Oakville) Facility  
Limited Partnership  
175 BLOOR ST. E.  
SOUTH TOWER, STE. 601  
TORONTO, ONTARIO

**COPYRIGHT:**  
Any reproduction or distribution for any purpose other than authorized by IBI Group is forbidden. Written dimensions shall have precedence over scaled dimensions. Contractors shall verify and be responsible for all dimensions and conditions on the job and IBI Group shall be informed of any variations from the dimensions and conditions shown on the drawing. Shop drawings shall be submitted to IBI Group for approval before proceeding with fabrication.

**IBI Group Architects (Canada) Inc.**  
is a member of the IBI Group of companies

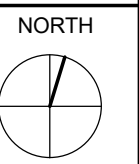
**ISSUES**

NO	DATE	DESCRIPTION
1	2017/11/09	ISSUED FOR ZBA SUBMISSION
2	2018/08/17	ISSUED FOR SPC SUBMISSION
3	2019/02/08	ISSUED FOR SPC 2ND SUBMISSION
4	2019/07/16	ISSUED FOR SPC 3RD SUBMISSION
5	2019/11/22	ISSUED FOR SPC 4TH SUBMISSION
6	2024/02/26	ZONING AMENDMENT - SENIOR APARTMENTS

**NO CHANGES PROPOSED**

SEAL

MUNICIPAL FILE NUMBER:  
SP # 1327.001/01



SUB CONSULTANT

PRIME CONSULTANT

**ARCADIS | IBI GROUP**

7th Floor - 55 St. Clair Avenue West  
Toronto ON M4V 2Y7 Canada  
tel (416) 596-1930 fax (416) 596-0644

PROJECT

**ASC OAKVILLE**

3000 Hospital Gate  
Oakville, Ontario, Canada, L6M 4H6

PROJECT NO: 106131

DRAWN BY: Author

CHKD' BY: Checker

SCALE: 1 : 200

DATE: 2024/02/26

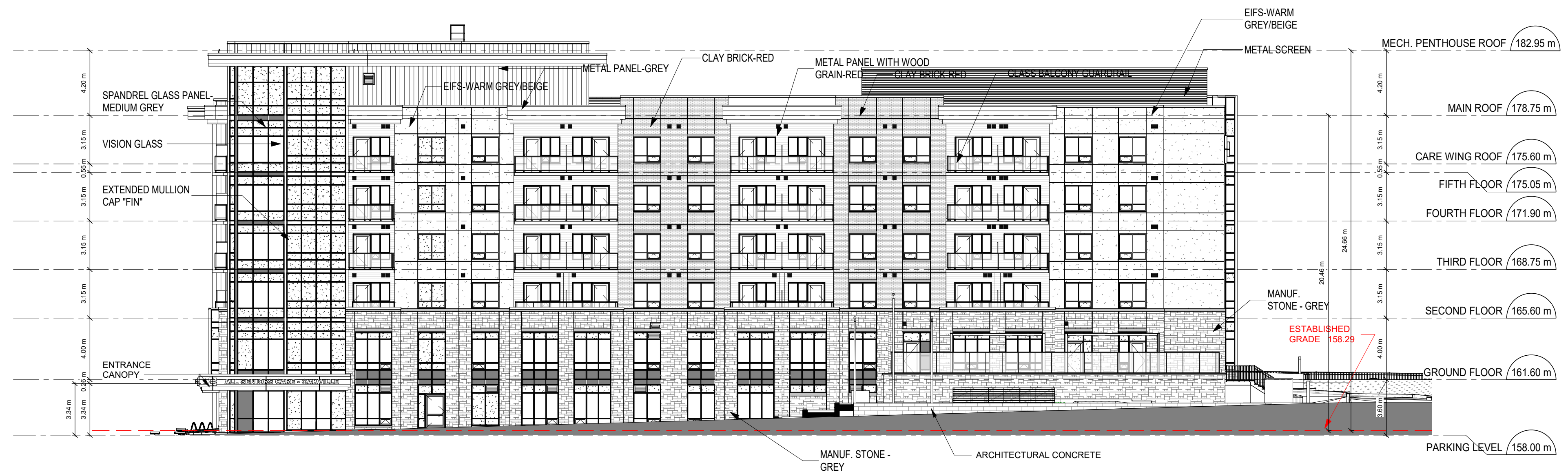
SHEET TITLE

**ELEVATIONS 01**

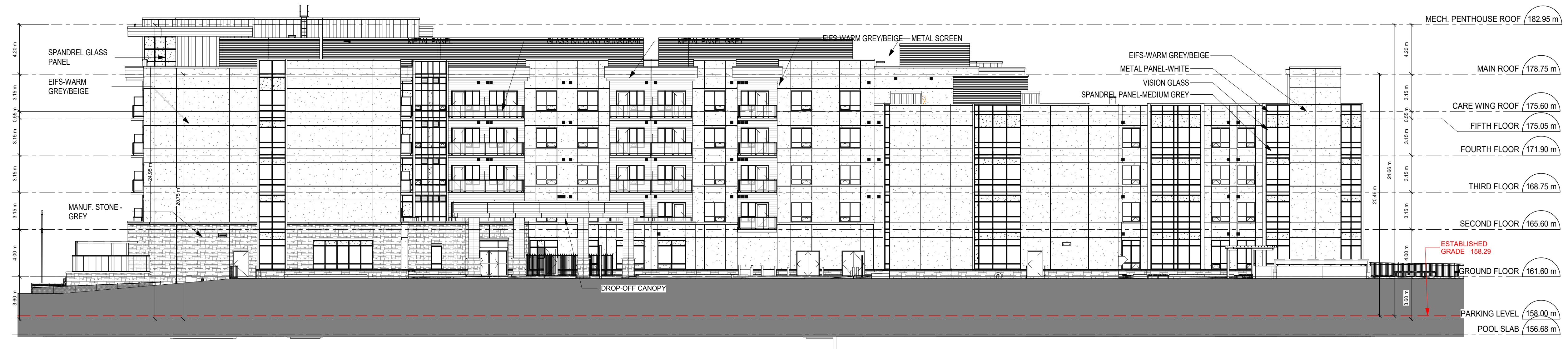
SHEET NUMBER

**SPA301**

ISSUE



**1 EAST ELEVATION**  
SPA301 Scale: 1 : 200



**2 NORTH ELEVATION**  
SPA301 Scale: 1 : 200



CLIENT



ASC (Oakville) Facility  
Limited Partnership  
175 BLOOR ST. E.  
SOUTH TOWER, STE. 601  
TORONTO, ONTARIO

COPYRIGHT:

Any reproduction or distribution for any purpose other than authorized by IBI Group is forbidden. Written dimensions shall have precedence over scaled dimensions. Contractors shall verify and be responsible for all dimensions and conditions on the job and IBI Group shall be informed of any variations from the dimensions and conditions shown on the drawing. Shop drawings shall be submitted to IBI Group for approval before proceeding with fabrication.

IBI Group Architects (Canada) Inc.  
is a member of the IBI Group of companies

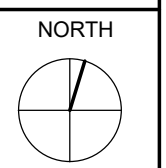
ISSUES

NO	DATE	DESCRIPTION
1	2017/11/09	ISSUED FOR ZBA SUBMISSION
2	2018/08/17	ISSUED FOR SPC SUBMISSION
3	2019/02/08	ISSUED FOR SPC 2ND SUBMISSION
4	2019/07/16	ISSUED FOR SPC 3RD SUBMISSION
5	2019/11/22	ISSUED FOR SPC 4TH SUBMISSION
6	2024/02/26	ZONING AMENDMENT - SENIOR APARTMENTS

NO CHANGES PROPOSED

SEAL

MUNICIPAL FILE NUMBER:  
SP # 1327.001/01



SUB CONSULTANT

PRIME CONSULTANT

**ARCADIS | IBI GROUP**

7th Floor - 55 St. Clair Avenue West  
Toronto ON M4V 2Y7 Canada  
tel (416) 596-1930 fax (416) 596-0644

PROJECT

**ASC OAKVILLE**

3000 Hospital Gate  
Oakville, Ontario, Canada, L6M 4H6

PROJECT NO: 106131

DRAWN BY: Author

CHK'D BY: Checker

SCALE: 1 : 200

DATE: 2024/02/26

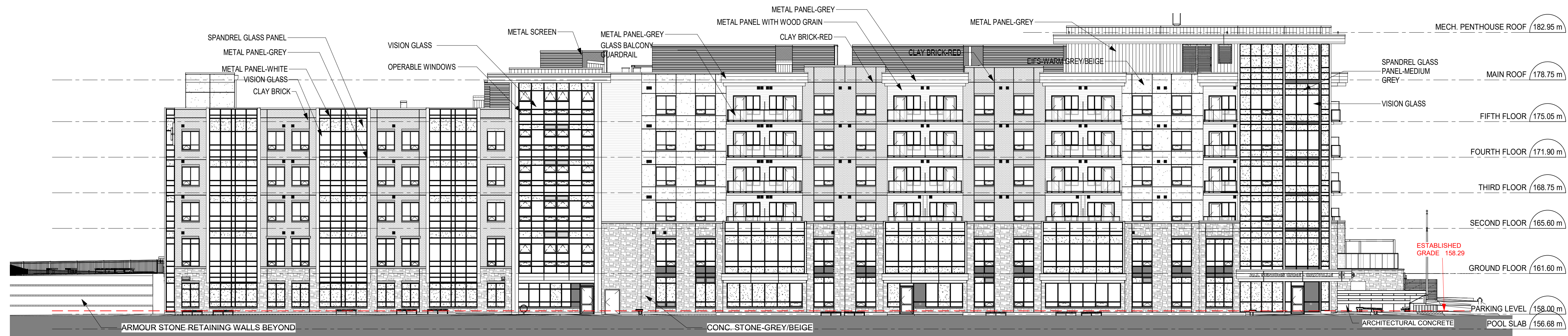
SHEET TITLE

**ELEVATIONS 02**

SHEET NUMBER

**SPA302**

ISSUE

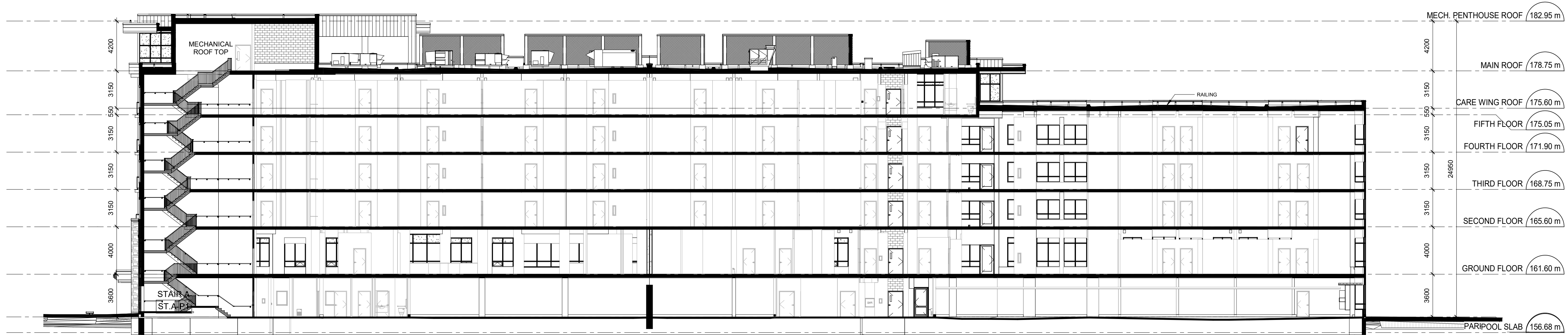


**1 SOUTH ELEVATION**  
SPA302 Scale: 1 : 200

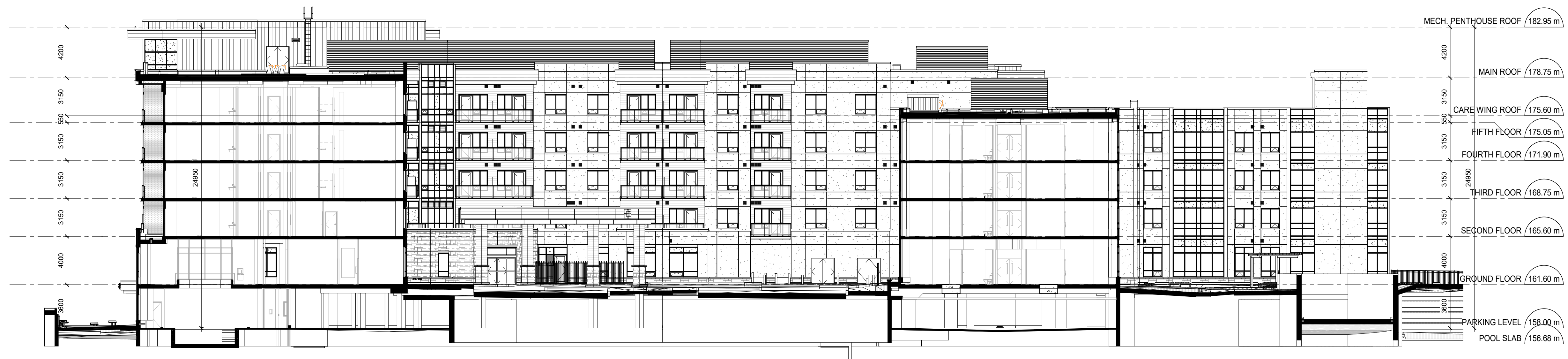


**2 WEST ELEVATION**  
SPA302 Scale: 1 : 200





1 SECTION A-A  
SPA401 Scale: 1 : 200



2 SECTION B-B  
SPA401 Scale: 1 : 200

CLIENT



ASC (Oakville) Facility  
Limited Partnership  
175 BLOOR ST. E.  
SOUTH TOWER, STE. 601  
TORONTO, ONTARIO

**COPYRIGHT:**  
Any reproduction or distribution for any purpose other than authorized by IBI Group is forbidden. Written dimensions shall have precedence over scaled dimensions. Contractors shall verify and be responsible for all dimensions and conditions on the job and IBI Group shall be informed of any variations from the dimensions and conditions shown on the drawing. Shop drawings shall be submitted to IBI Group for approval before proceeding with fabrication.

IBI Group Architects (Canada) Inc.  
is a member of the IBI Group of companies

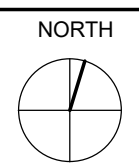
ISSUES

NO	DATE	DESCRIPTION
1	2017/11/09	ISSUED FOR ZBA SUBMISSION
2	2018/08/17	ISSUED FOR SPC SUBMISSION
3	2019/02/08	ISSUED FOR SPC 2ND SUBMISSION
4	2019/07/16	ISSUED FOR SPC 3RD SUBMISSION
5	2019/11/22	ISSUED FOR SPC 4TH SUBMISSION
6	2024/02/26	ZONING AMENDMENT - SENIOR APARTMENTS

NO CHANGES PROPOSED

SEAL

MUNICIPAL FILE NUMBER:  
SP.# 1327.001/01



SUB CONSULTANT

PRIME CONSULTANT

ARCADIS | IBI GROUP

7th Floor - 55 St. Clair Avenue West  
Toronto ON M4V 2Y7 Canada  
tel (416) 596-1930 fax (416) 596-0644

PROJECT

ASC OAKVILLE

3000 Hospital Gate  
Oakville, Ontario, Canada, L6M 4H6

PROJECT NO: 106131

DRAWN BY: Author

CHK'D BY: Checker

SCALE: 1 : 200

DATE: 2024/02/26

SHEET TITLE

BUILDING SECTIONS

SHEET NUMBER

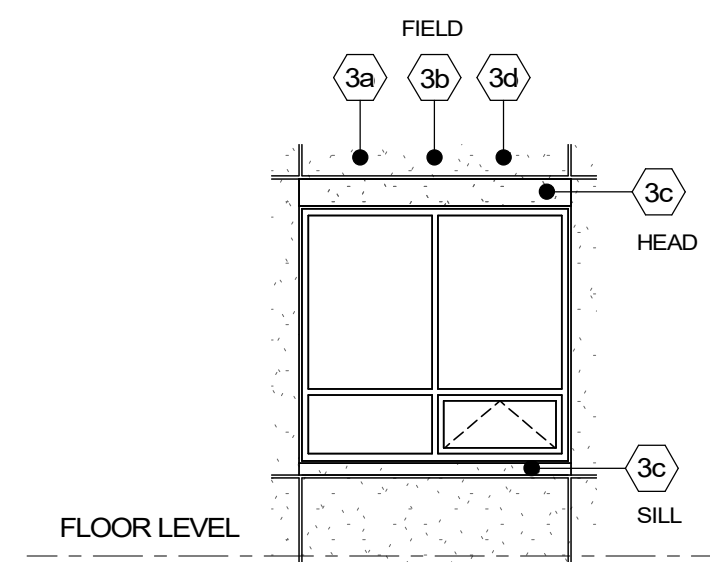
SPA401

ISSUE

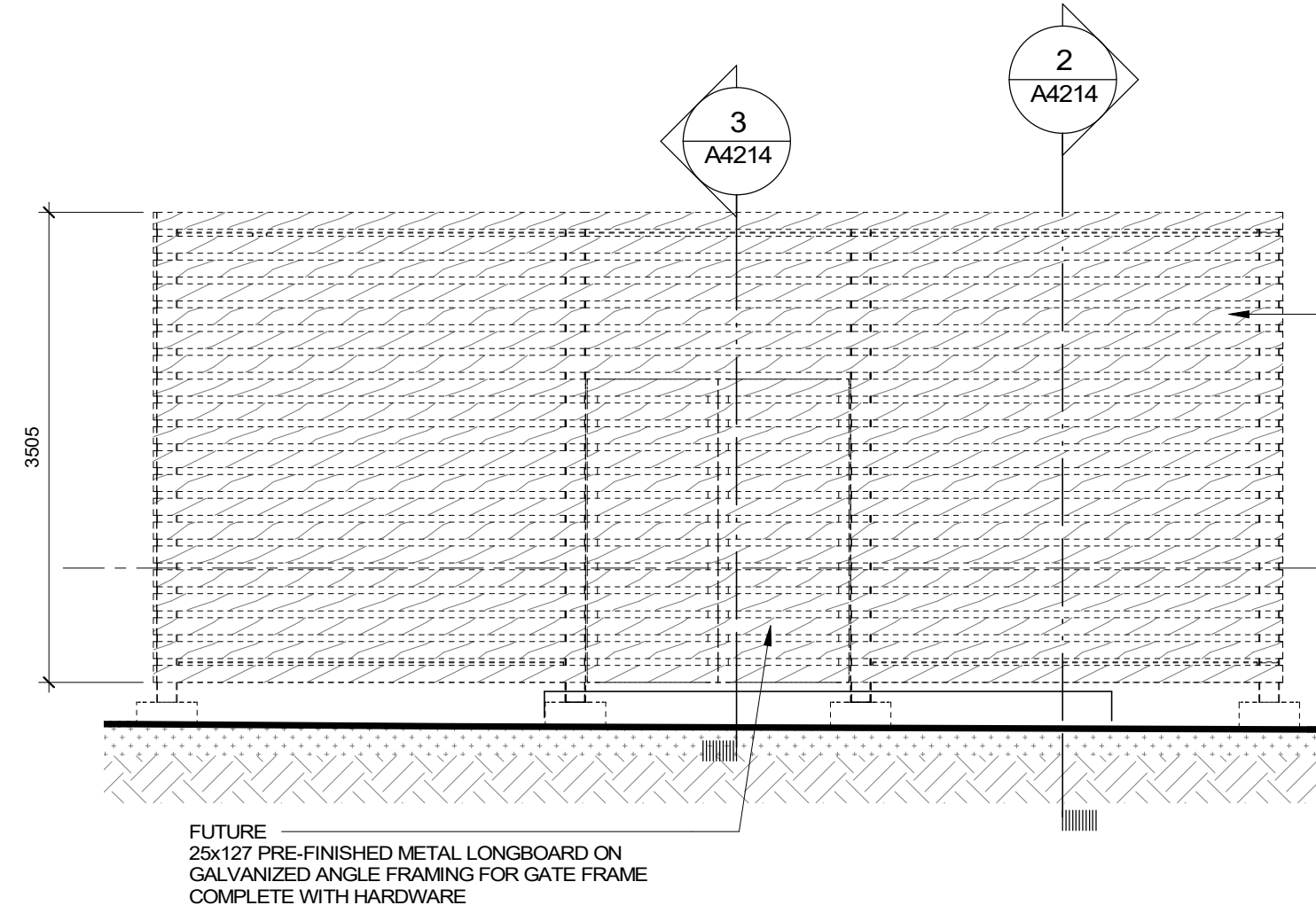


EXTERIOR FINISHES	
1	UNIT MASONRY - STONE
2	UNIT MASONRY - BRICK
3a	EXTERIOR INSULATION FINISH SYSTEM (E.I.F.S.) - BEIGE
3b	EXTERIOR INSULATION FINISH SYSTEM (E.I.F.S.) - RED
3c	EXTERIOR INSULATION FINISH SYSTEM (E.I.F.S.) - OFF-WHITE
3d	EXTERIOR INSULATION FINISH SYSTEM (E.I.F.S.) - GRAY
4	ALUMINUM WINDOW WALL
5	ALUMINUM WINDOWS
7	GLASS RAILING 1070 HIGH - TEMPERED GLASS ON ALUMINUM FRAME
8	METAL SIDING (AD 300-R) - DARK CEDAR WOOD GRAIN FINISH
9	METAL SIDING (AD 300-SR) - WHITE
10	METAL SIDING (AD 300-SR) - GREY
11	METAL SCREEN

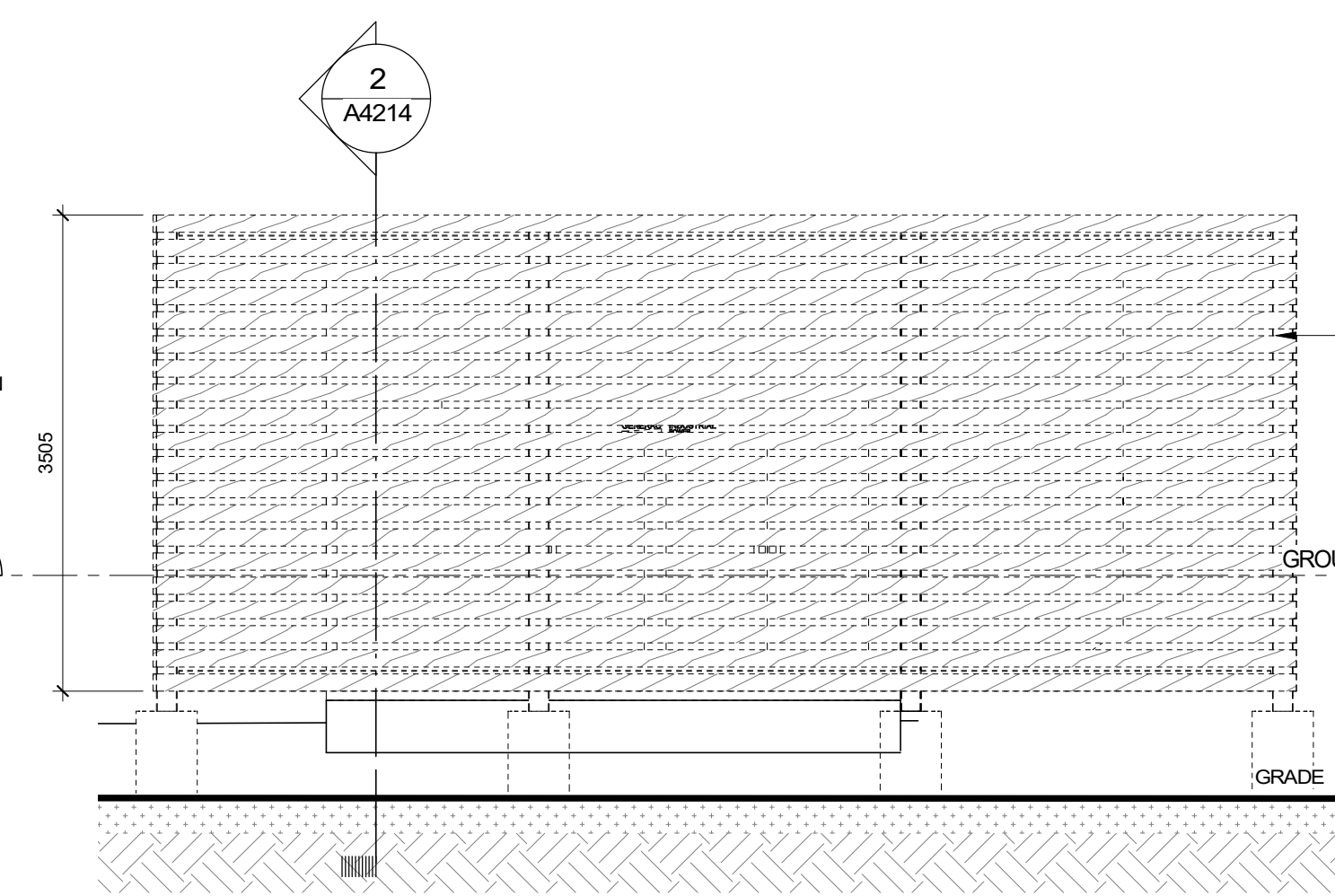
WINDOW & SCREEN FINISHES	
CL	VISION GLASS PANEL
VT	VISION GLASS - TINTED (SHADE ON LIGHT GREY BY GUARDIAN GLASS OR EQUIVALENT)
TG	TEMPERED OR SAFETY PANEL (TG)
SP	GLASS SPANDREL PANEL (SP)
MT-1	METAL SPANDREL PANEL - WHITE (MT-1)
MT-2	METAL SPANDREL PANEL - GREY (MT-2)
LV	METAL LOUVER (LV)



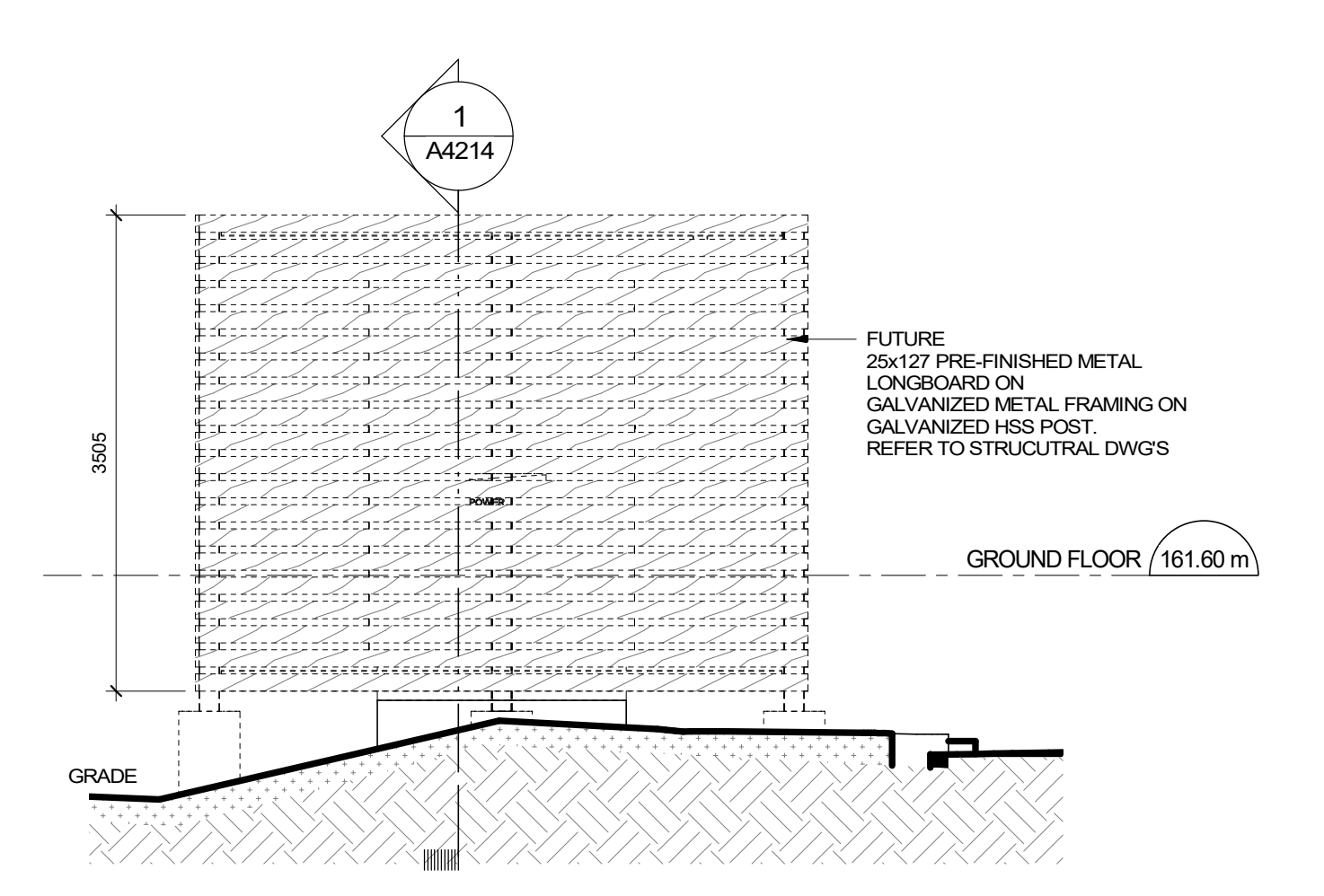
8 EIFS COLOUR AT PUNCH WINDOWS  
A3003 Scale: 1:50



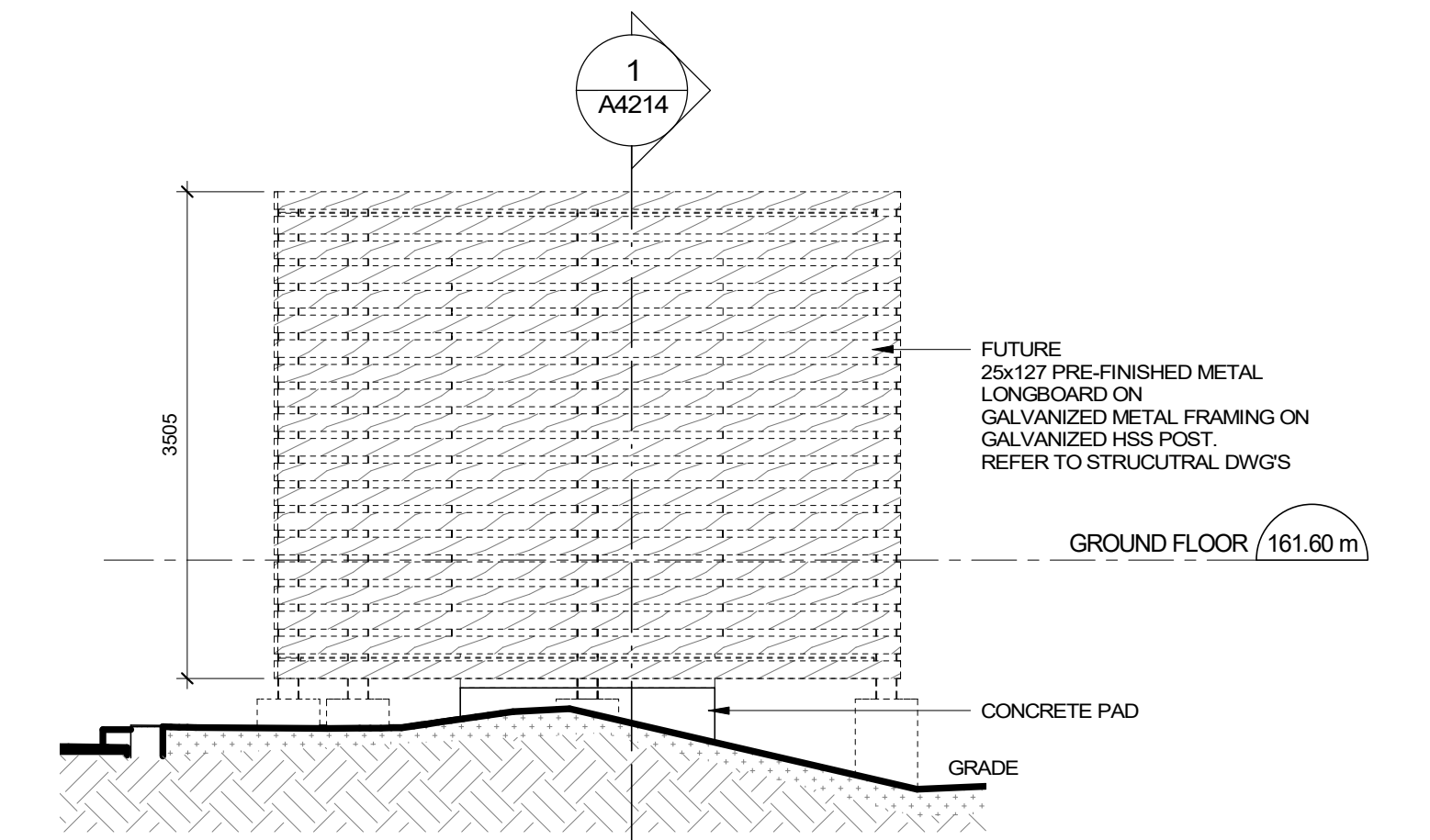
4 GENERATOR SCREEN - SOUTH ELEVATION  
A3003 Scale: 1:50



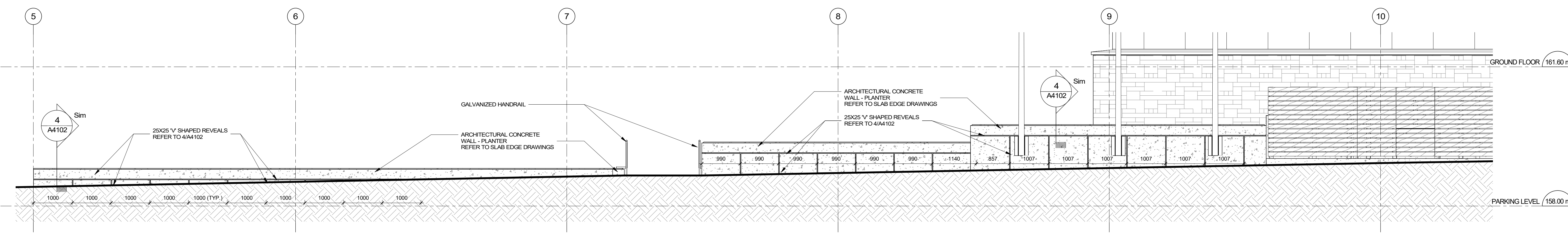
5 GENERATOR SCREEN - NORTH ELEVATION  
A3003 Scale: 1:50



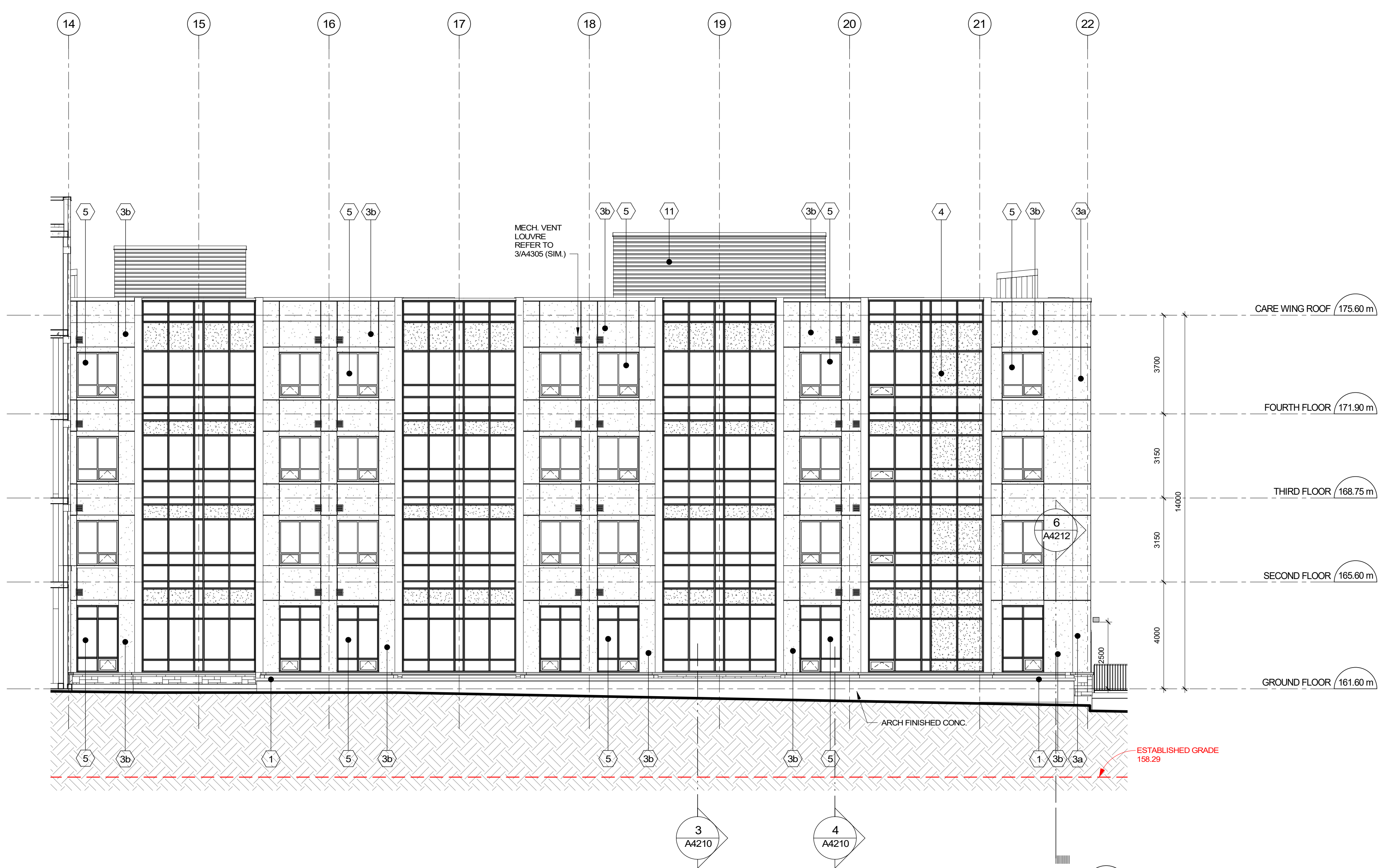
6 GENERATOR SCREEN - WEST ELEVATION  
A3003 Scale: 1:50



7 GENERATOR SCREEN - EAST ELEVATION  
A3003 Scale: 1:50



3 EAST SIDE ELEVATION - PLANTER RETAINING WALLS TYP.  
A3003 Scale: 1:50



2 CARE WING EAST ELEVATION  
A3003 Scale: 1:100



1 INDEPENDENT LIVING WEST ELEVATION  
A3003 Scale: 1:100

ISSUE NO.	DATE	ISSUED FOR CONSTRUCTION	ISSUANCE	ISSUE NO.	DATE	ISSUED FOR CONSTRUCTION	ISSUANCE
1	20200704	ISSUED FOR CONSTRUCTION		14	20220331	ISSUED FOR SH-149	
2	20201023	ISSUED FOR SH-23		15	20220617	ISSUED FOR SH-128R2	
3	20210106	ISSUED FOR SH-23RT		16	20220117	ISSUED FOR SH-185	
4	20210101	ISSUED FOR SH-36		17	20220210	ISSUED FOR AMENDED BUILDING PERMIT	
5	20210325	ISSUED FOR SH-74					
6	20210518	ISSUED FOR SH-60					
7	20210527	ISSUED FOR SH-62					
8	20210618	ISSUED FOR SH-69					
9	20210712	ISSUED FOR SH-31R1					
10	20210802	ISSUED FOR SH-28R1					
11	20211109	ISSUED FOR SH-102					
12	20220111	ISSUED FOR SH-136					
13	20220317	ISSUED FOR SH-126					

CLIENT: **ASC OAKVILLE FACILITY LIMITED PARTNERSHIP**  
175 BLOOR ST. E. SOUTH TOWER, STE. 671 TORONTO, ONTARIO

IBI GROUP ARCHITECTS (CANADA) INC.  
55 St. Clair Avenue West, 7th Floor Toronto ON M4V 2V7 Canada Tel: +1 (416) 596-1600 Fax: +1 (416) 596-0644

SEAL: **IBI GROUP ASSOCIATION OF ARCHITECTS**

PROJECT: **ASC OAKVILLE**  
3000 Hospital Gate Oakville, Ontario, Canada, L6M 4H6SHEET TITLE: **BUILDING ELEVATIONS**

DATE: 2023/02/10  
SCALE: As indicated  
JOB No: 106131  
DWG No: **A3003**