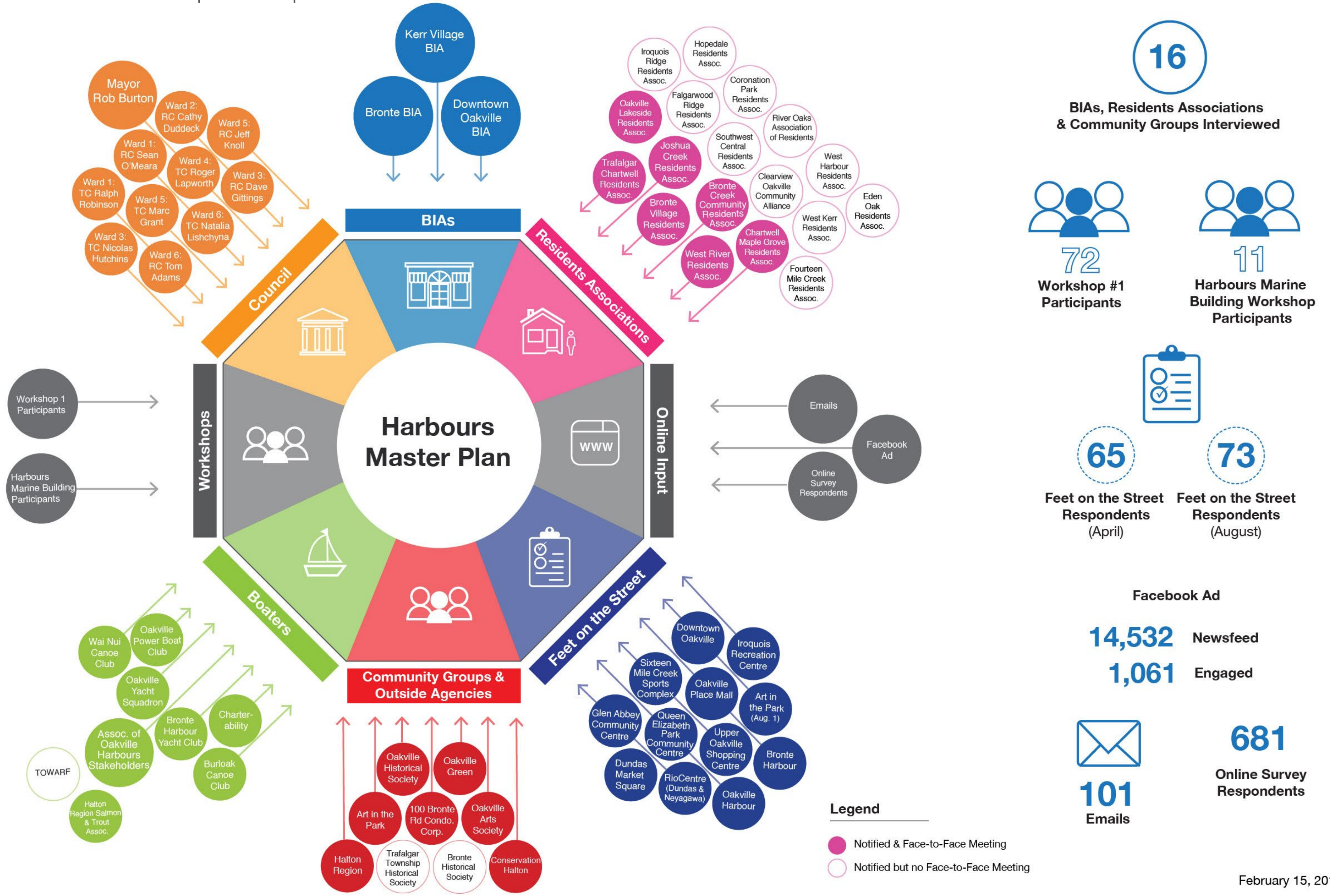
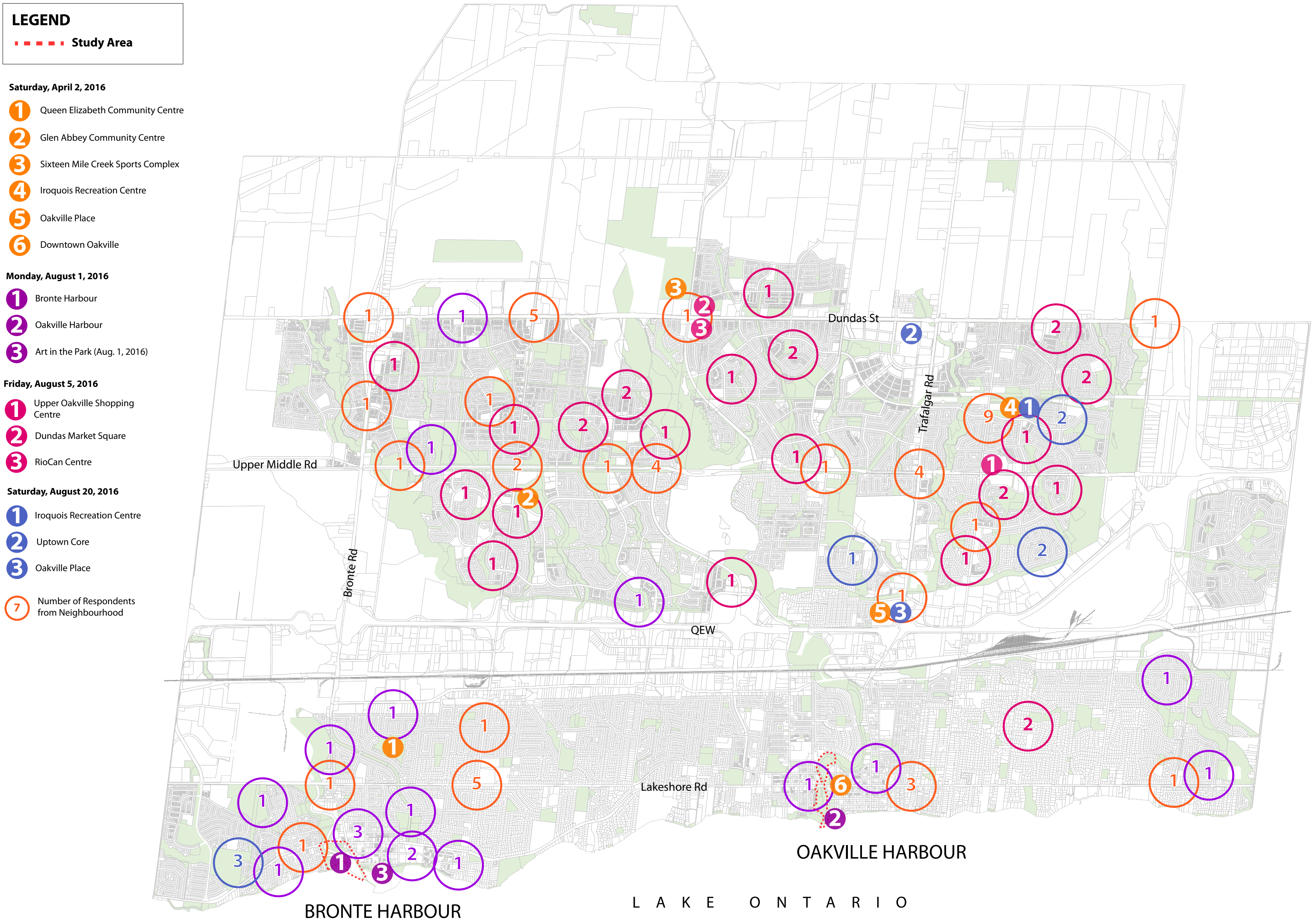


Who We've Heard From

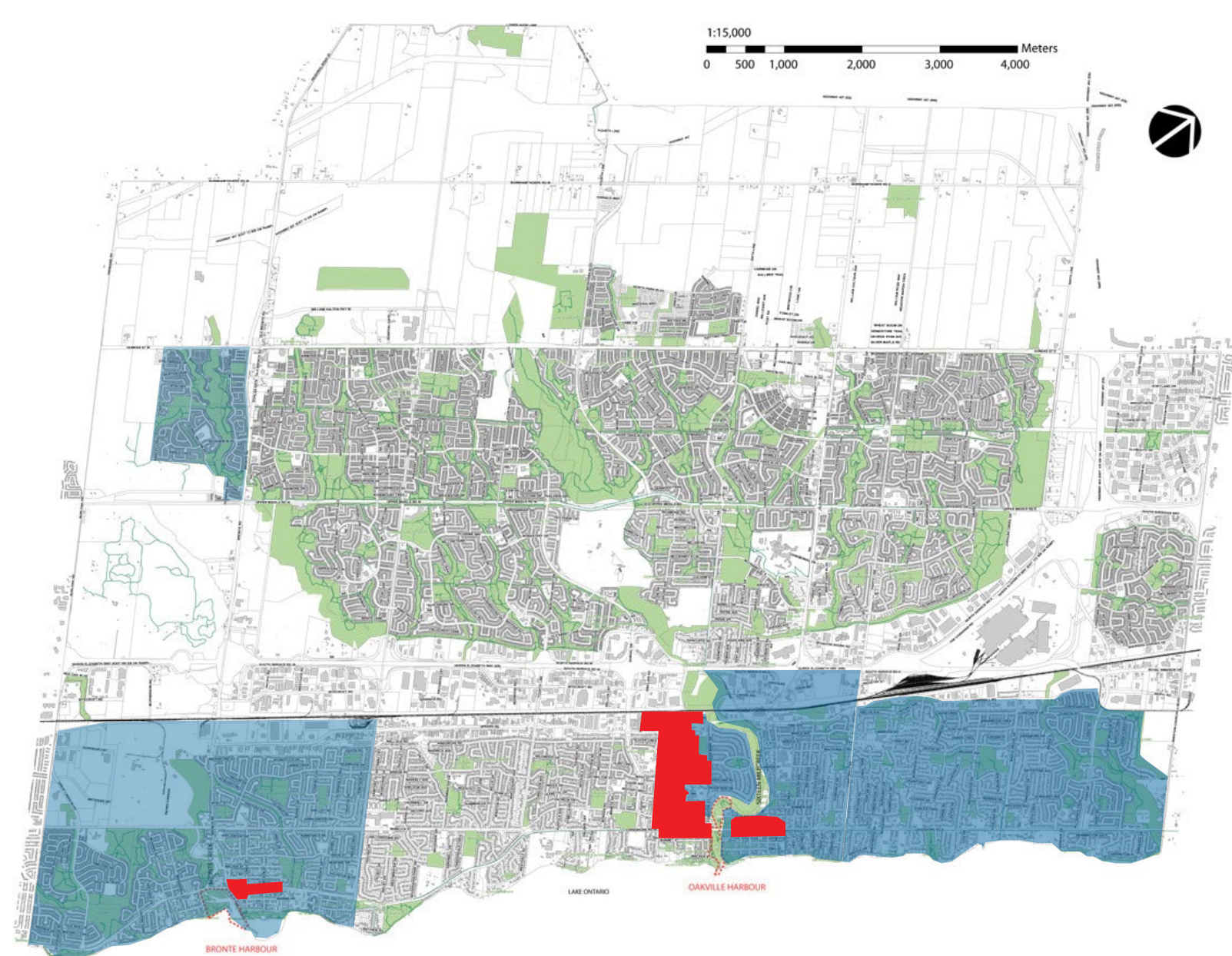
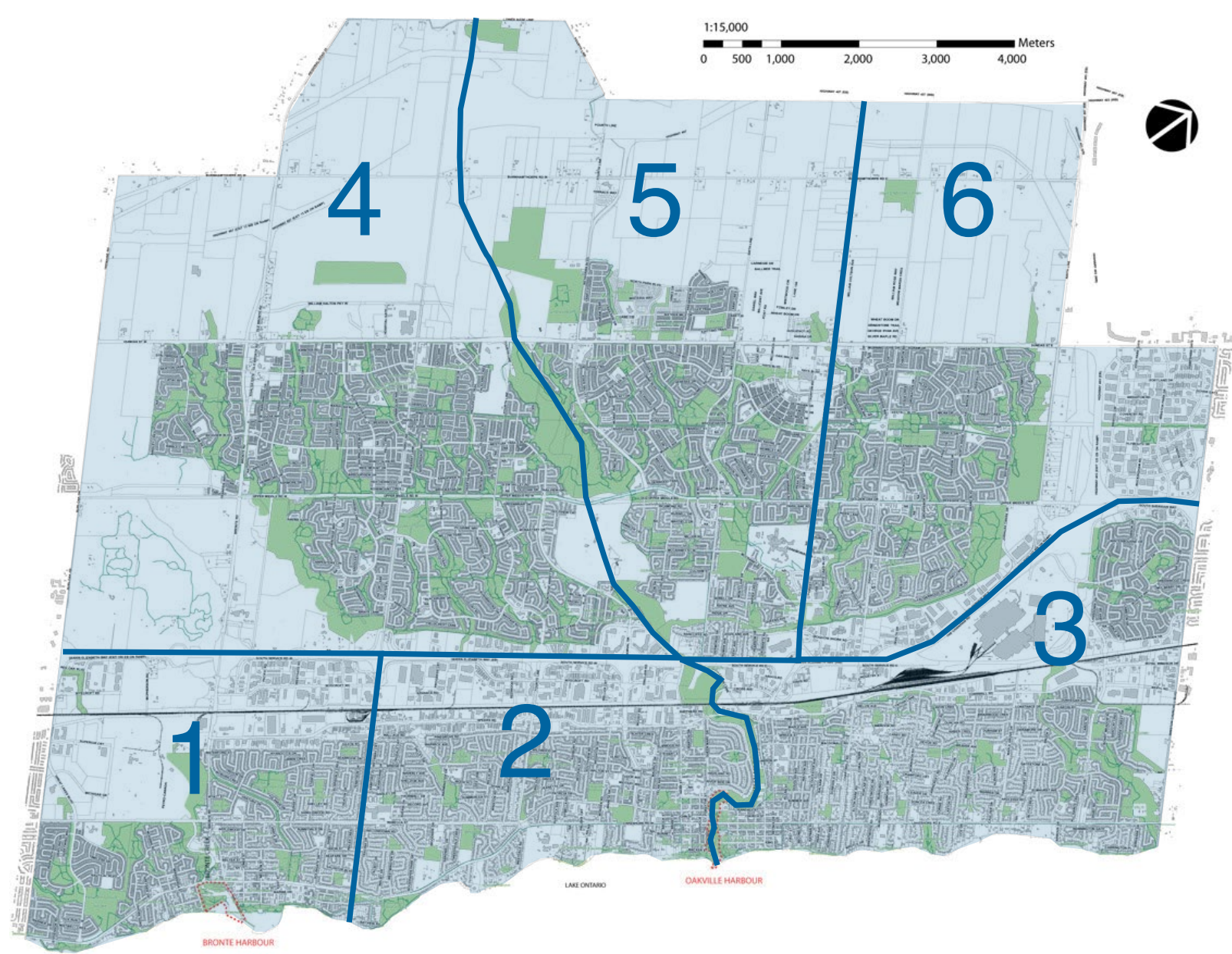
Stakeholders who have provided input:



Locations of Feet on the Street stations:

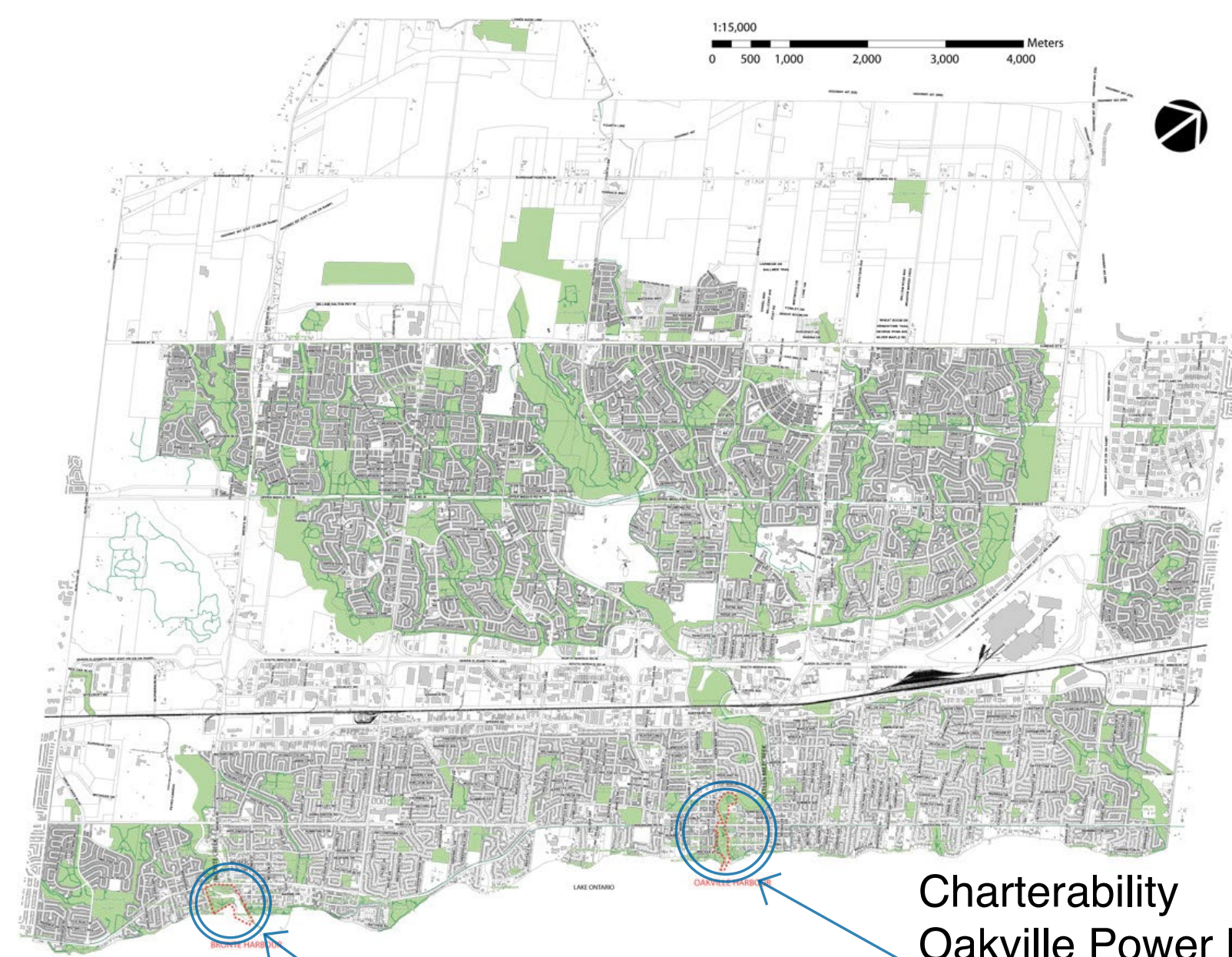


Who We've Heard From



● Councillor Wards

● Residents Groups
● BIAs

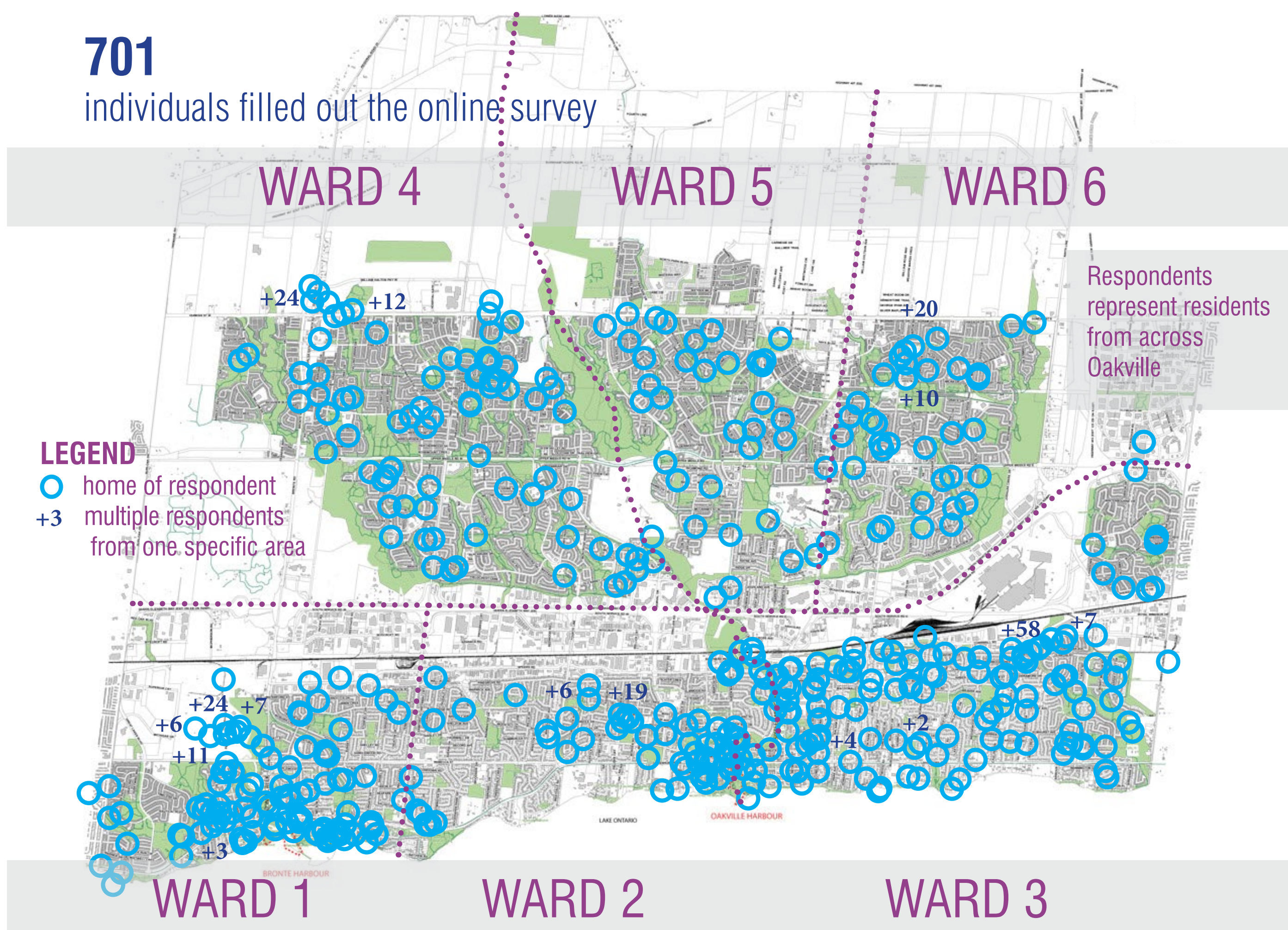


Bronte Harbour Yacht Club

Charterability
Oakville Power Boat Club
Oakville Yacht Squadron
Burloak Canoe Club
Wai Nui Canoe Club

Summary of results from the Online Survey - December, 2016

701
individuals filled out the online survey



ONLINE SURVEY RESPONDENTS

Ward 1	21.4%	Ward 4	16.1%
Ward 2	13.3%	Ward 5	5.1%
Ward 3	28.5%	Ward 6	9.6%

30.5% of respondents are affiliated with a boating club

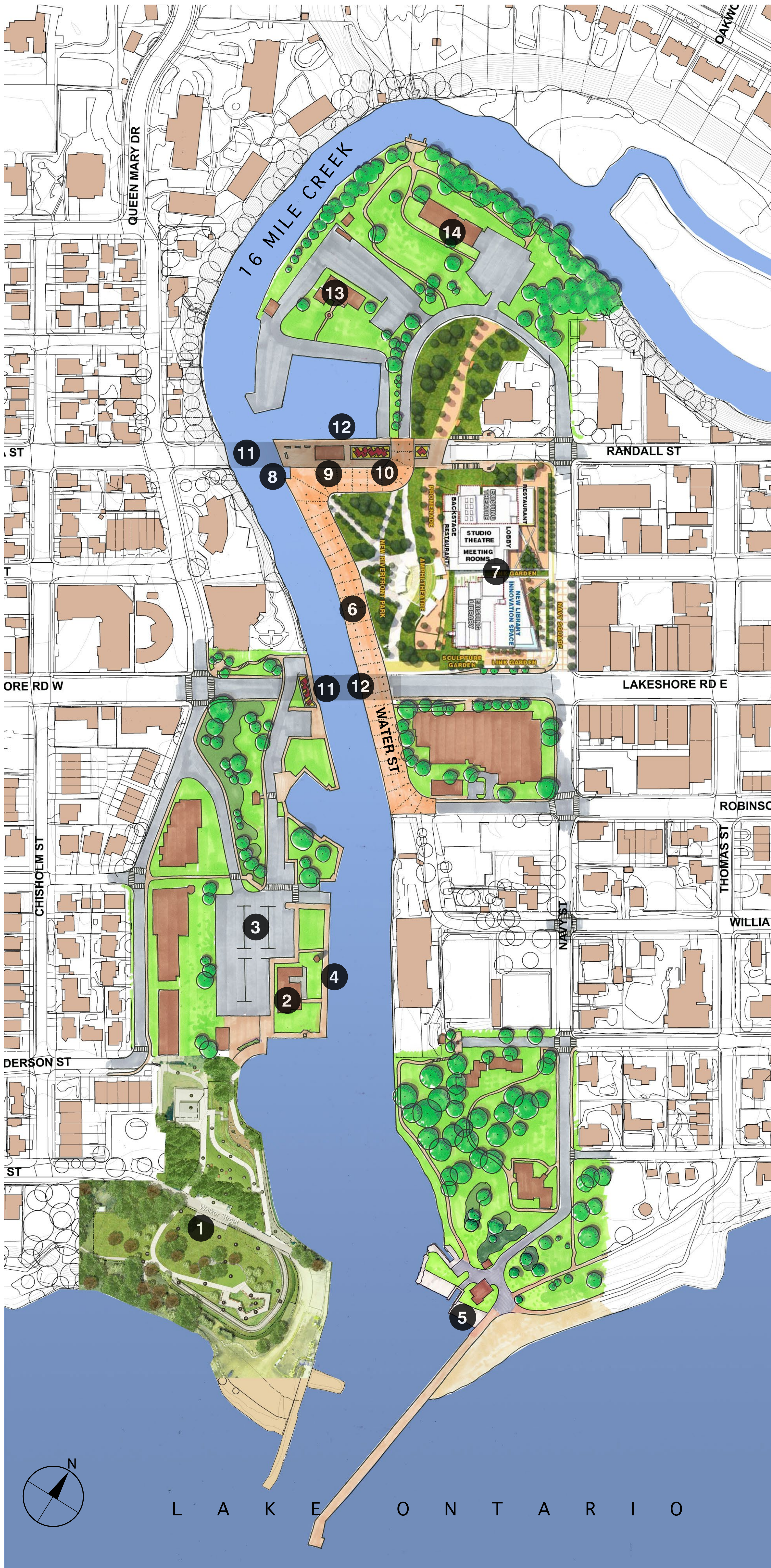
6% of respondents did not provide a valid Oakville postal code

Bronte Harbour Demonstration Plan



- 1 Bronte Bluffs
- 2 Proposed overlook at end of West River Street
- 3 Beach
- 4 Accessible beach access
- 5 Children's playground & park pavilion
- 6 Proposed boat launch
- 7 Pathway extended to water's edge viewing area
- 8 Proposed connections to Lakeshore Road
- 9 Proposed harbour gateway with signage
- 10 Entry drive paved with pedestrian materials and links to waterfront
- 11 Bronte Marina Building
- 12 Pedestrian paving treatment adjacent to building as appropriate to feature heritage character and any public use
- 13 Proposed pedestrian linkage
- 14 Continuous pedestrian walkway from Bronte Outer Harbour to Lakeshore Road
- 15 Bronte Harbour Yacht Club

Oakville Harbour Demonstration Plan



- 1 Oakville Harbour West Shore Master Plan
- 2 Oakville Yacht Squadron
- 3 Proposed Parking lot and winter boat storage
- 4 Public pathway at water's edge
- 5 TOWARF
- 6 Proposed shared street treatment for Water Street, potential realignment as a water's edge promenade
- 7 Design concept from Downtown Cultural Hub Study
- 8 Public human-powered boating launch area shared with WaiNui Canoe Club & Charterability
- 9 Proposed public washrooms/storage area for human-powered boating
- 10 Proposed art/play features under the bridges
- 11 Bridge overhead
- 12 Proposed public walkway along south edge of boat basin
- 13 Oakville Power Boat Club
- 14 Burloak Canoe Club

Key Direction

1

Connect the Harbours with their Urban Centres

A Provide a direct linkage from all streets adjacent to the harbour



Pedestrian crossing

B Ensure new development fronts, faces and features the harbour



Pop-up retail

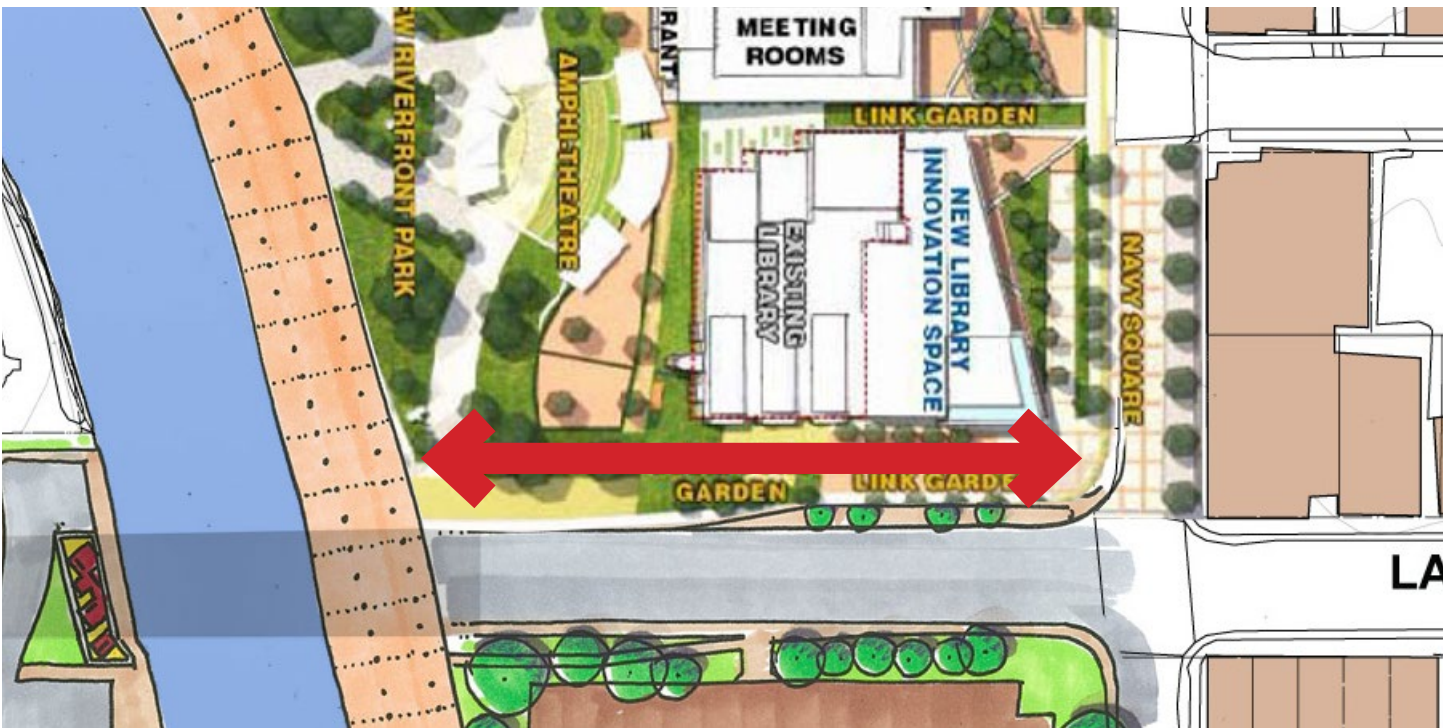
C Provide safe overlooks or vantage points where there are no opportunities for direct connections



Viewing platform

OH OAKVILLE HARBOUR

D Library/Cultural Hub Connection



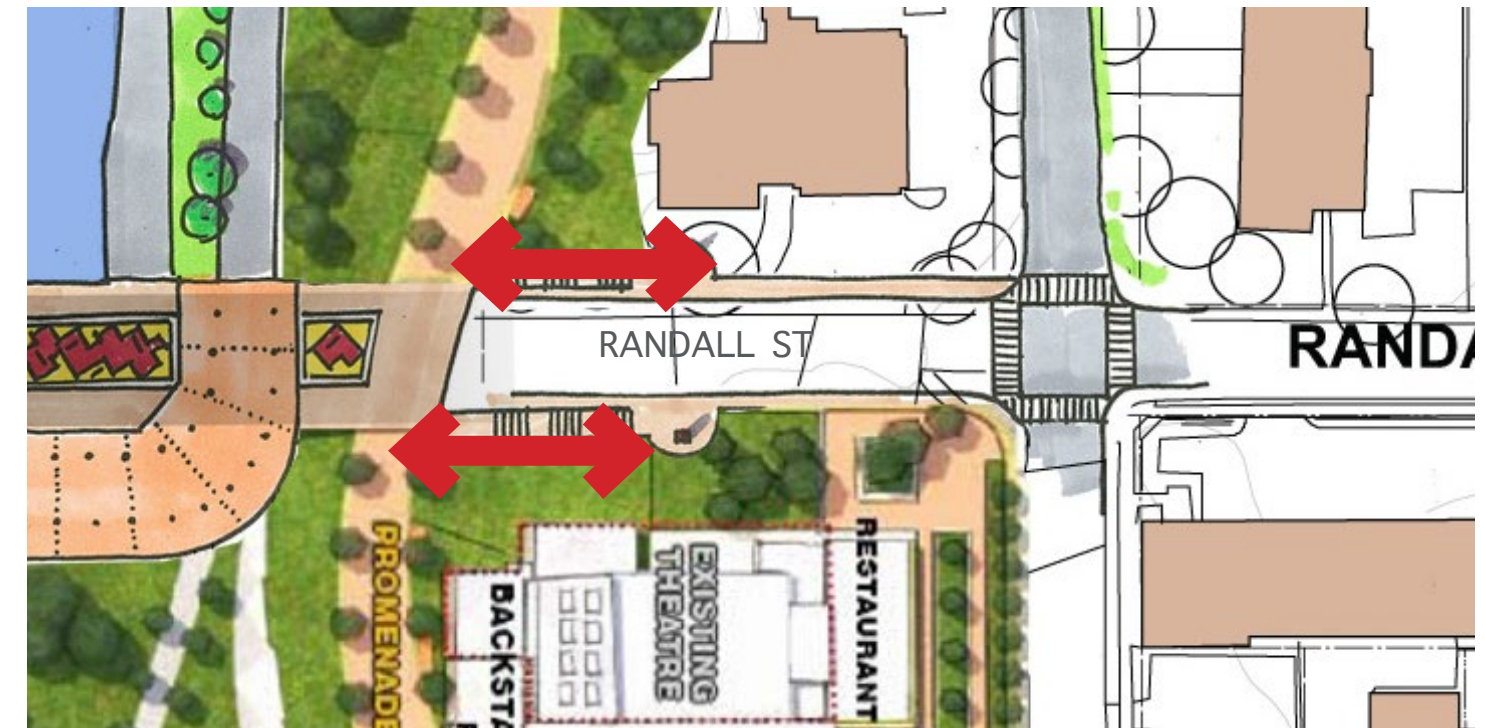
Multiple linkages from Lakeshore Road, Navy Street and the Cultural Hub to the waterfront

E Improve the existing stairway connections along Lakeshore Road



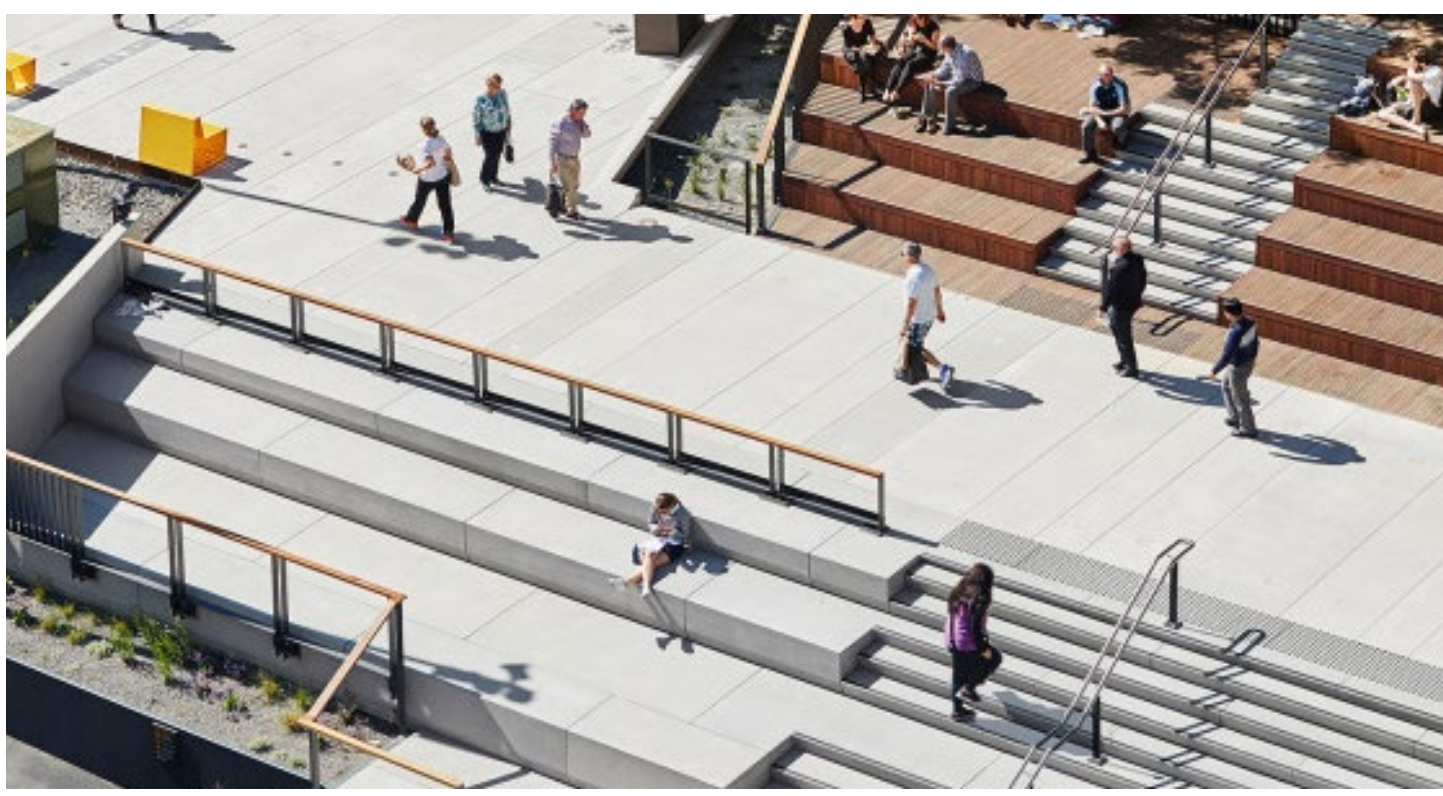
Stairway from Lakeshore Road

F Consider one or more additional stairway connections



Randall Street connection(s)

G Consider a bold connection



The Goods Line, Sydney, Australia

BH BRONTE HARBOUR

H Provide enhanced connections from Lakeshore Road



Feature staircase for people and bikes

Connect Bronte Harbour and Bronte Heritage Waterfront Park



Connect Bronte Harbour and Bronte Heritage Waterfront Park for pedestrians

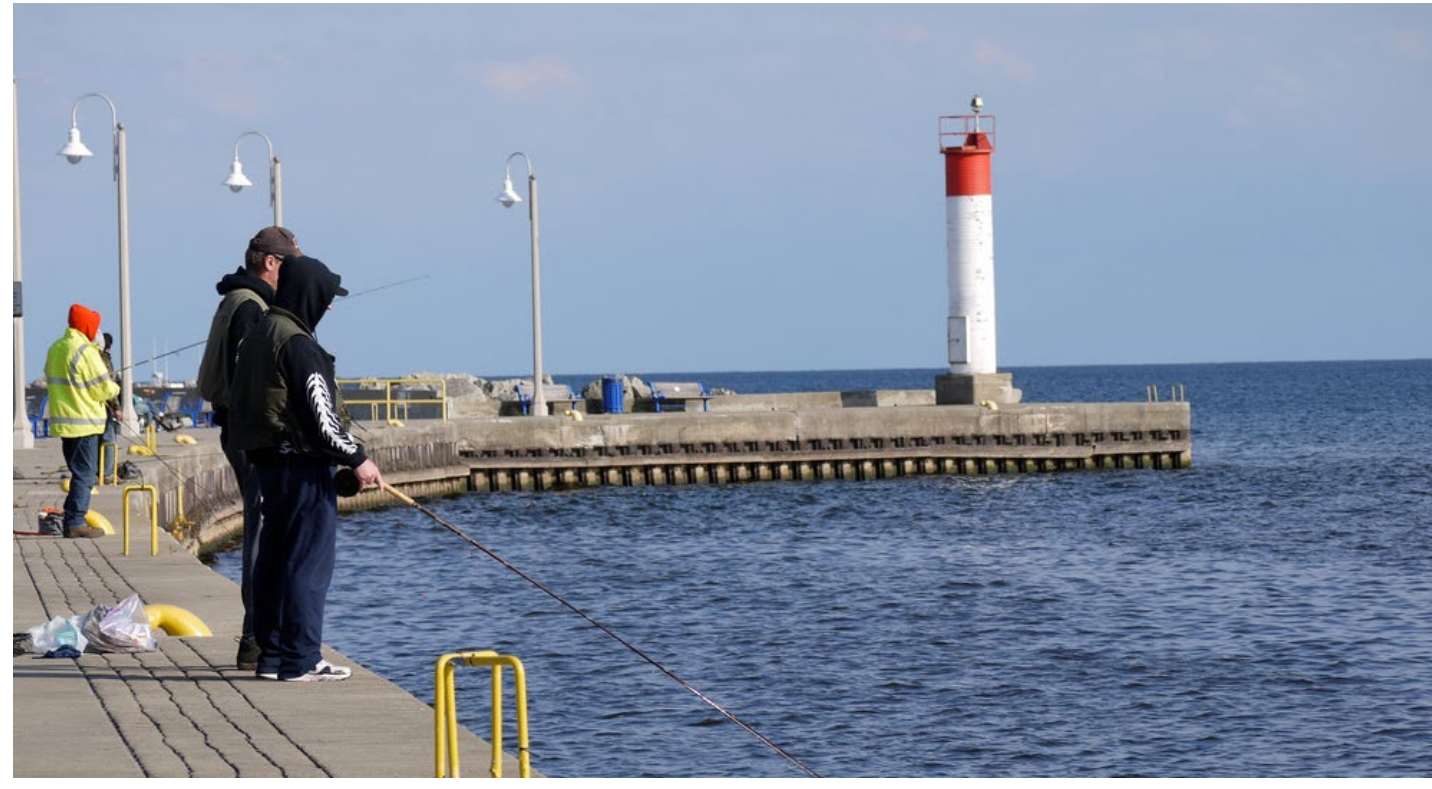
Key Direction 2 Balance & Respect for All Users

A Clarify boat launch options



Boat launch

B Welcome fishing in the harbours



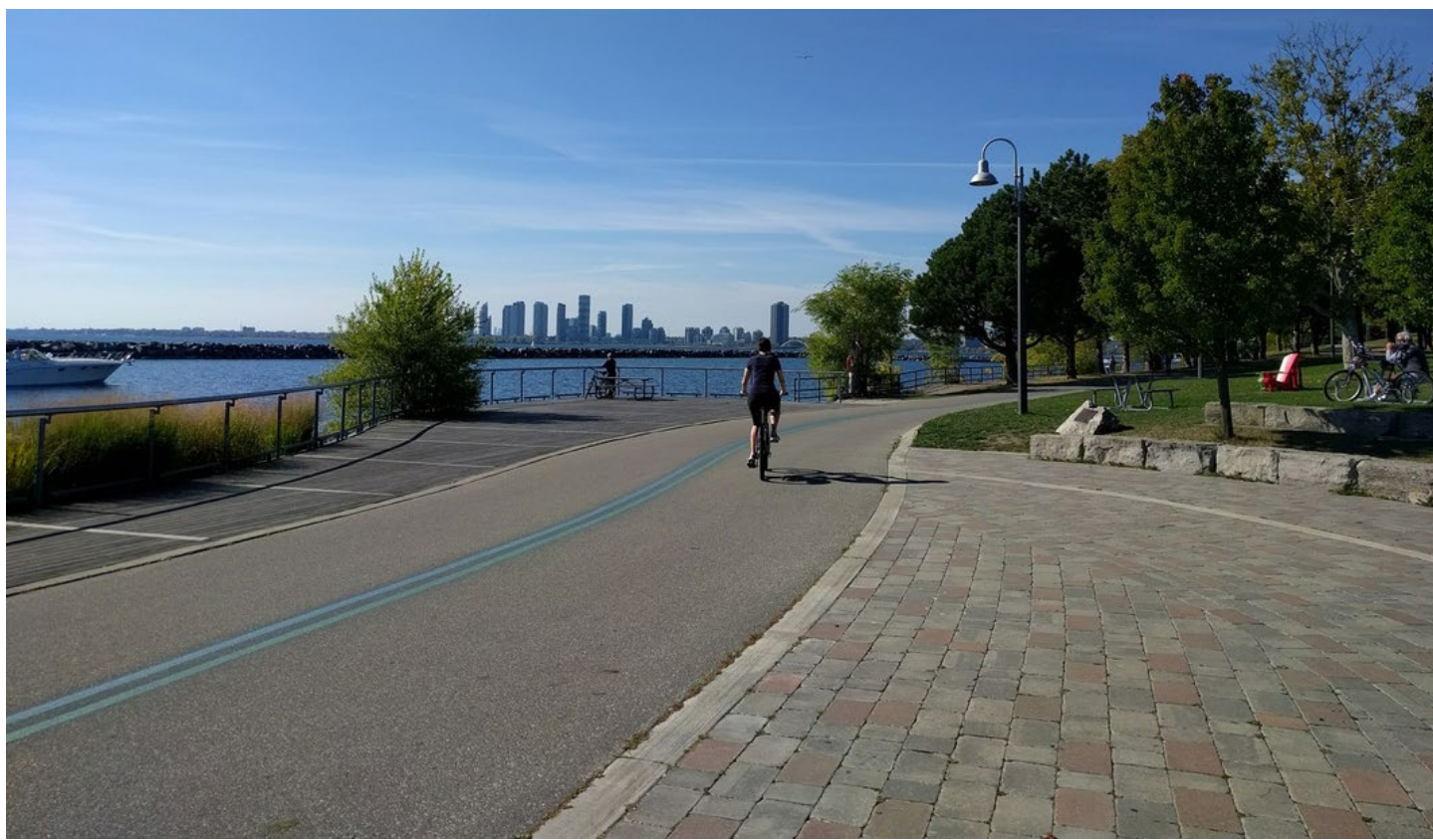
Bronte Harbour

C Ensure slips for sail and power boats do not encroach on human-powered launch areas



Dock launch system

D Encourage cycling to the harbours



Waterfront trail, Toronto

E Realign boat storage



Bronte Harbour

OH OAKVILLE HARBOUR

F Potential space reallocation with a new marina



Oakville Harbour

G Facilitate Oakville Yacht Squadron's operational needs



Example of a closeable gate along a waterfront trail

Key Direction 3 Provide Clear Public Access

A Develop a landscape and materials palette to clearly identify public access



Wayfinding signage, bench and bike lock-ups

B Fill in the missing links



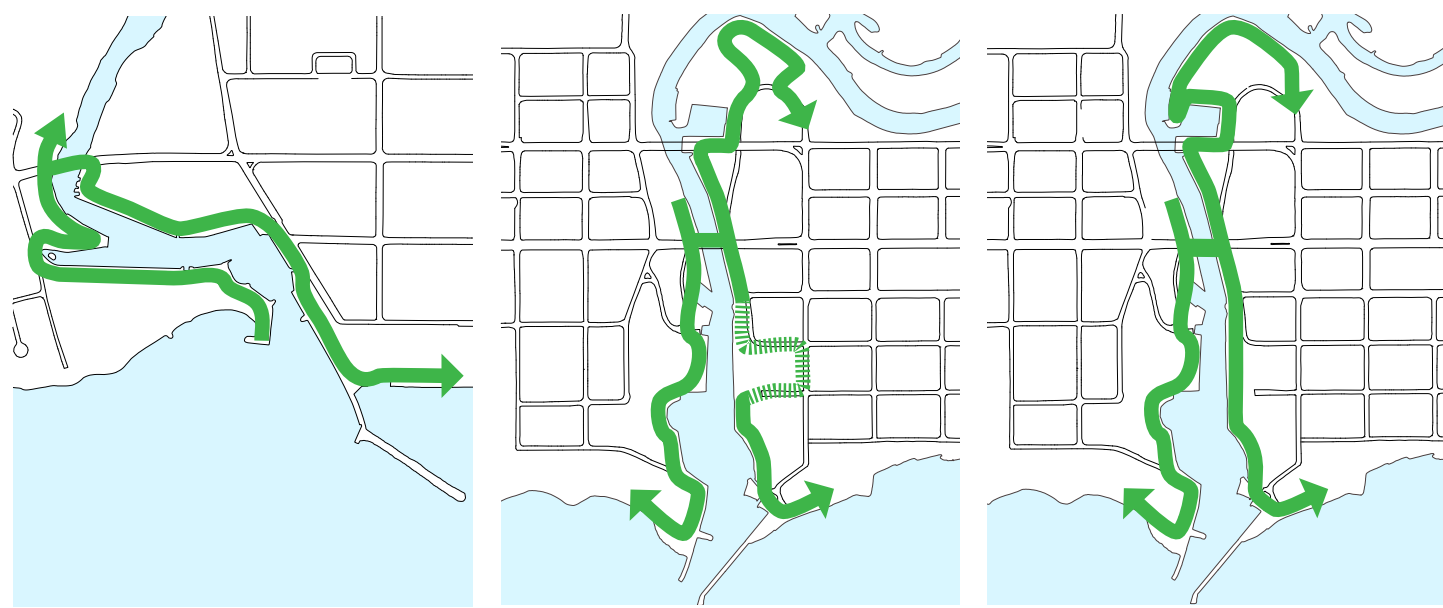
Provide pedestrian connections where there are none

C Ensure there is an accessible route to all major harbour destinations



Bronte Harbour

D Create the shortest possible route around the harbours



The long term vision of a continuous waterfront trail for Bronte Harbour The goal of this Master Plan's time horizon for Oakville Harbour The long term vision of a continuous waterfront trail for Oakville Harbour

E Celebrate the end of trails



Tannery Park, Oakville

F Ensure public areas are well lit at night



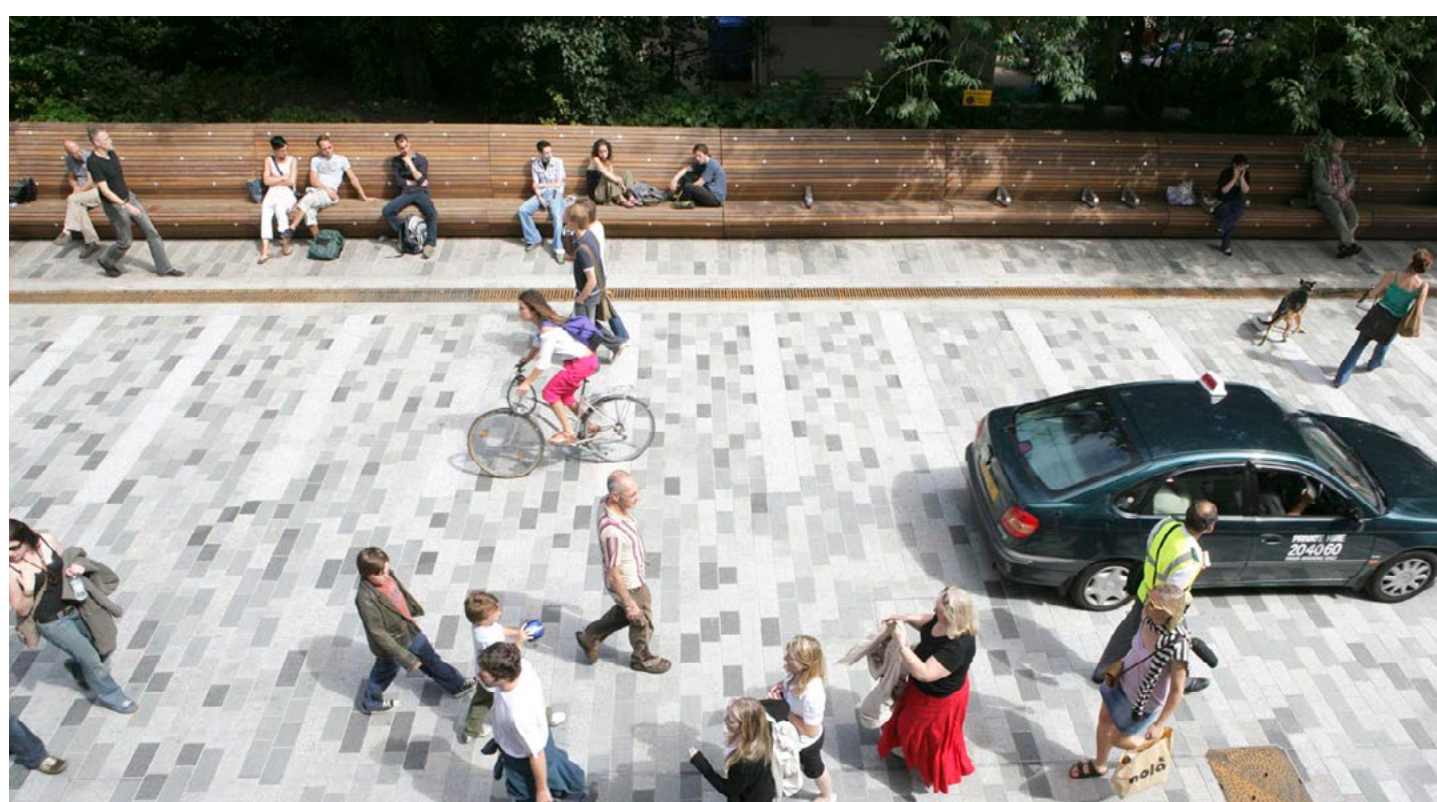
Tannery Park, Oakville

Key Direction 4 Shared Space for Vehicle Access & Parking

A Water Street



Water Street along Oakville Harbour



Shared street

Key Direction 5 Provide Beautiful Amenities

A Re-imagine the spaces under the bridges



Potential improvements under the Rebecca Street bridge

B Public art



Jigew by spmb and Brook McIlroy Architects, Thunder Bay

C Beach destination playground



Playground and accessible routes at Bronte Harbour

Key Direction 6 Enhance Wayfinding & Signage

A Town-wide wayfinding strategy



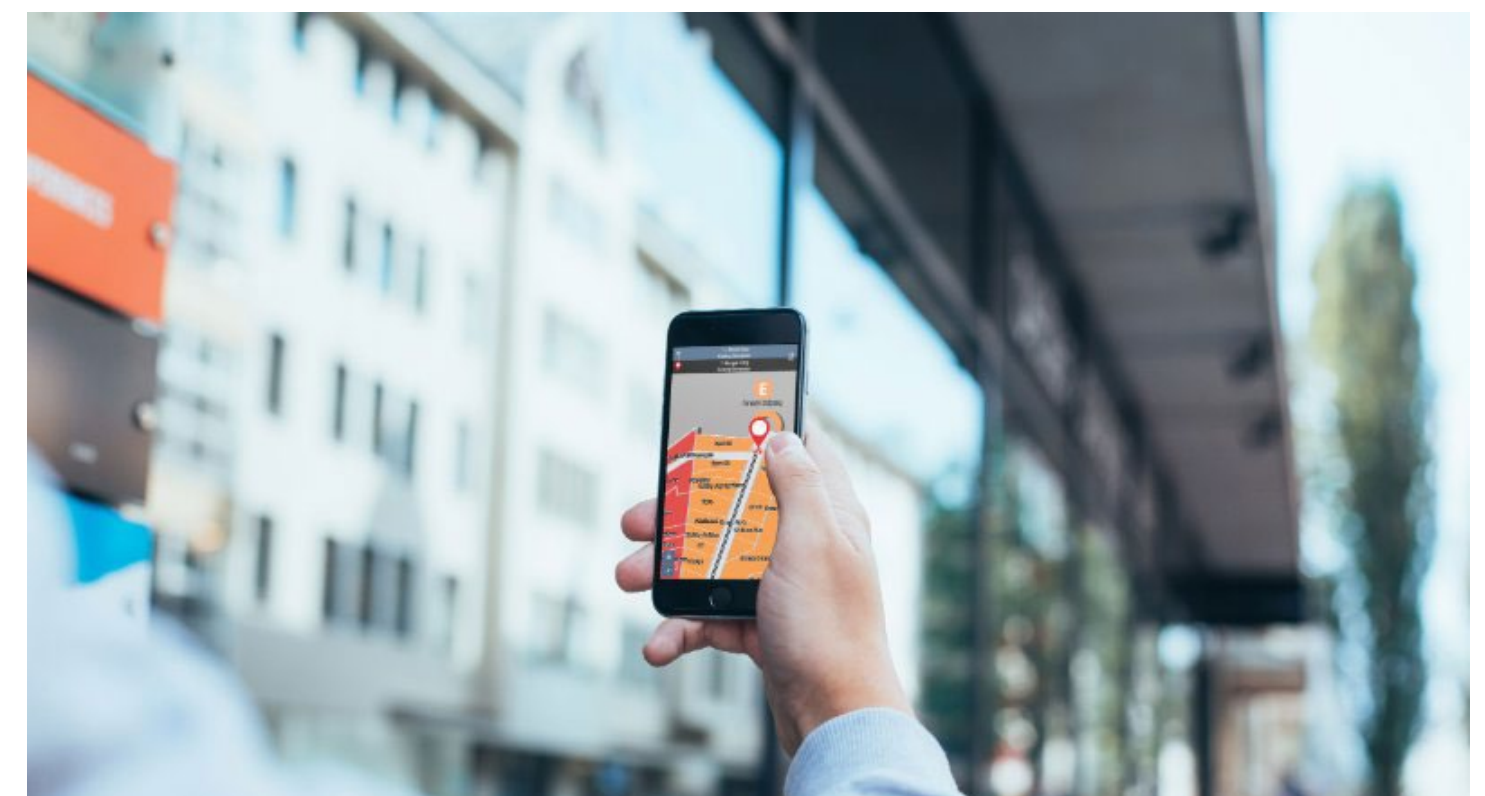
Great wayfinding and signs in the harbour today

B Enhance directional signage for the harbours



Wayfinding and signage, Hobart, Australia

C Embrace technology



Wayfinding using a mobile app

D Innovative signage: positive signage



Sign encouraging use of green space on Toronto Island

Key Direction 7 Protect Natural Features

A Increase tree canopy



Riparian vegetation

B Manage invasive species



Invasive Vinca Minor spreading across forest floor

C Promote bank stability



Bank stabilization planting

D Manage trail impacts



Waterfront trail

E Stormwater management



Parking lot with bio-swale

Key Direction 8 Complement Cultural Heritage Landscapes

A Complement the cultural heritage landscapes/components



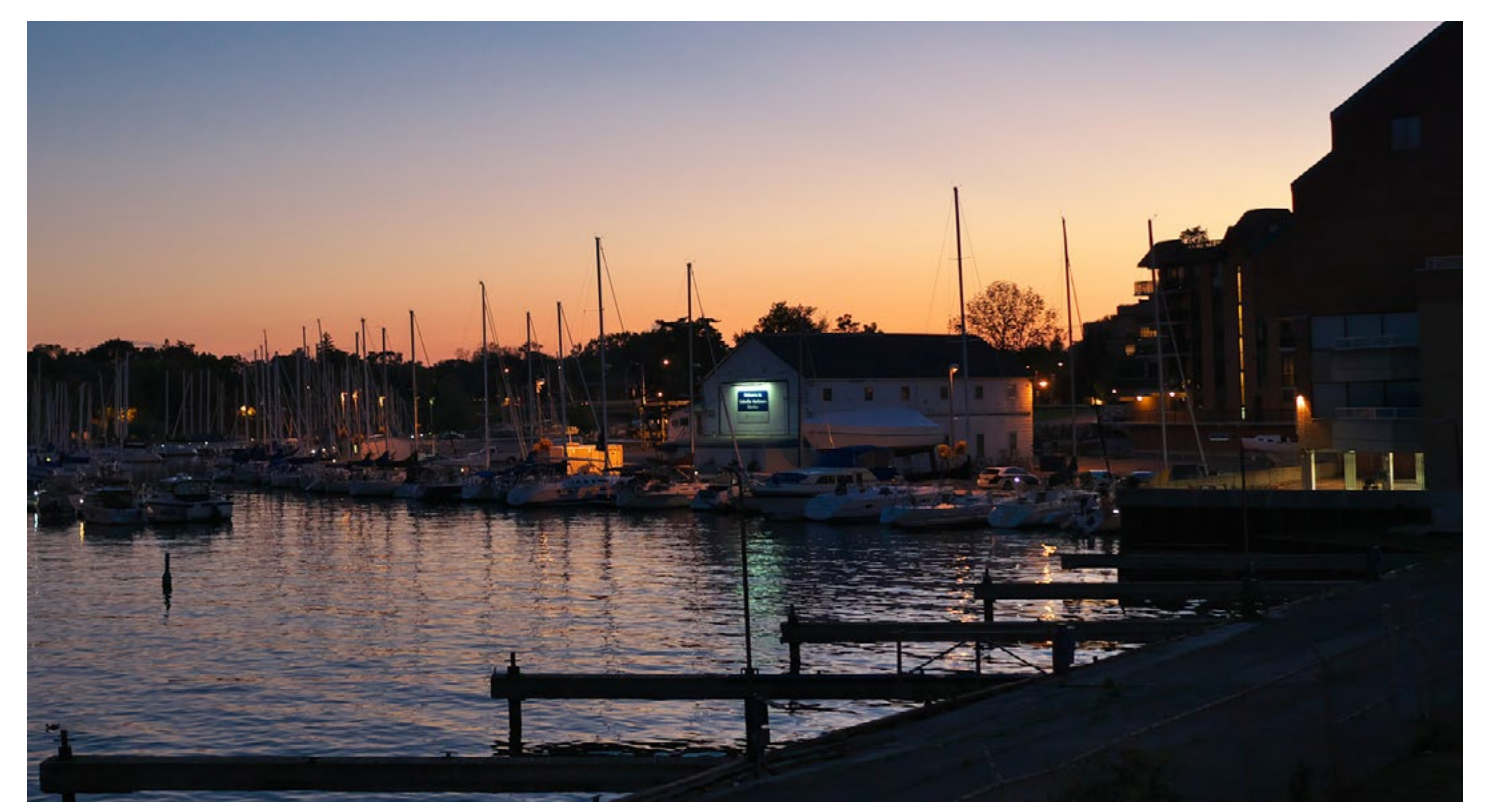
Lyon's Cabin at Oakville Harbour

B Implement interpretive information



Oakville Harbour interpretive signage

C Preserve Bronte Marina Building



Bronte Marina Building