

SPRUCE ROSE INC. SUBDIVISION

24T-XXXXXX/XXXX

20M-XXXXX

308 & 318 SPRUCE STREET

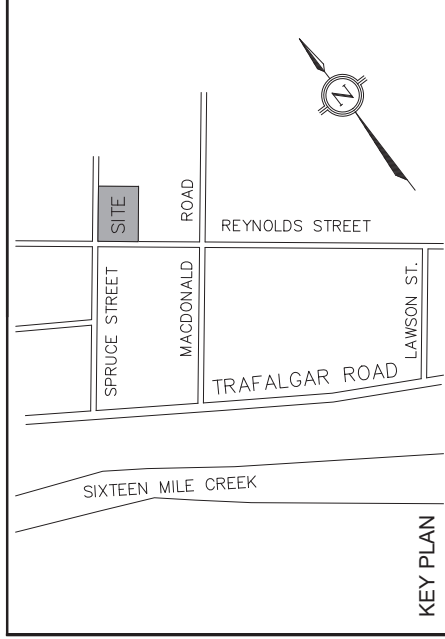


TOWN OF OAKVILLE

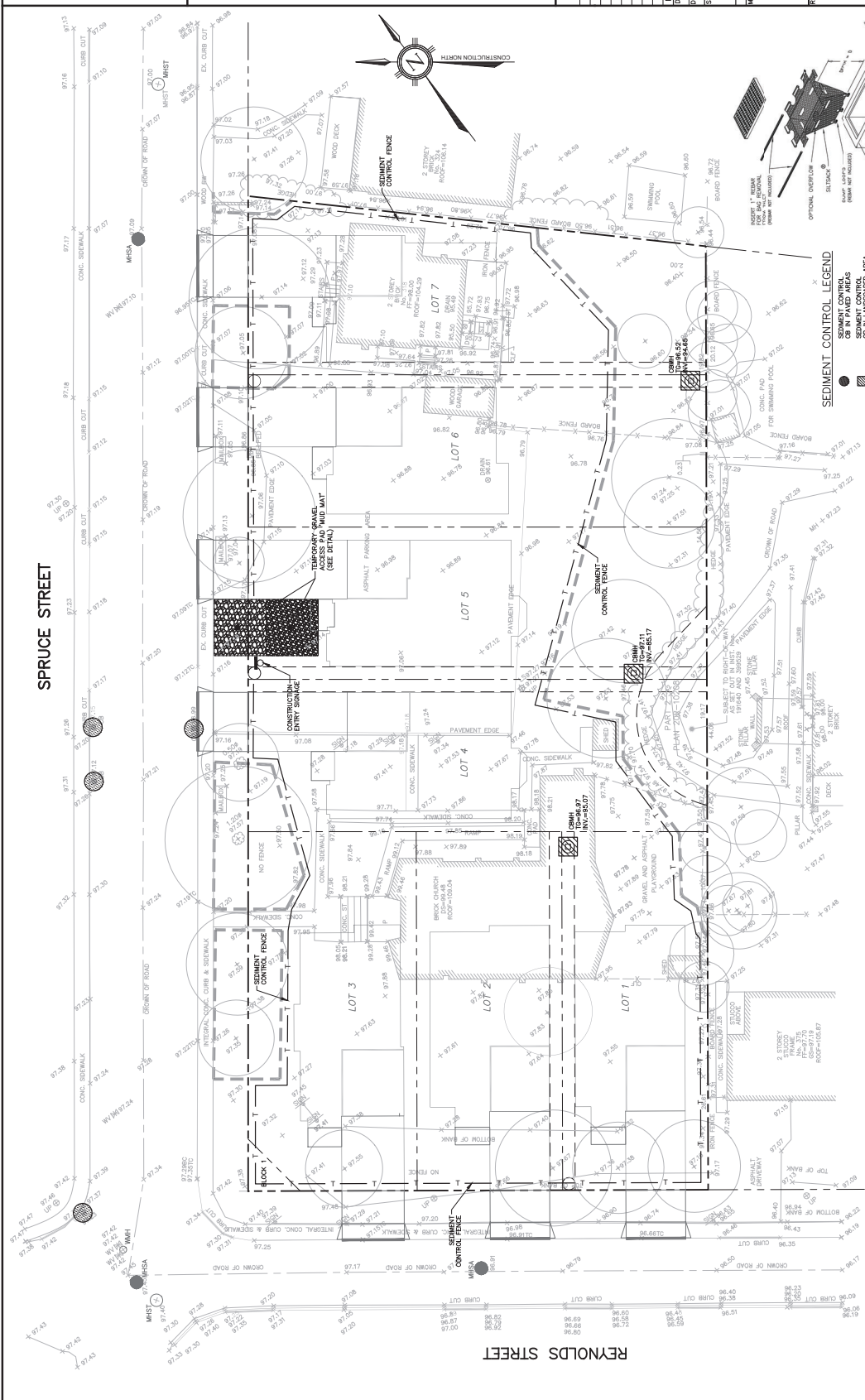


DRAWING INDEX

Sheet	Title
E1	EROSION AND SEDIMENT CONTROL PLAN
S1	GENERAL SERVICING PLAN
S2	STORM DRAINAGE AREA PLAN
S3	SANITARY DRAINAGE AREA PLAN
CU1	COMPOSITE UTILITY PLAN
G1	GRADING PLAN
D1	SECTIONS AND DETAILS PLAN
N1	STANDARD NOTES



CONSULTANT FILE: 1819
TOWN FILE: 24T-XXXXX



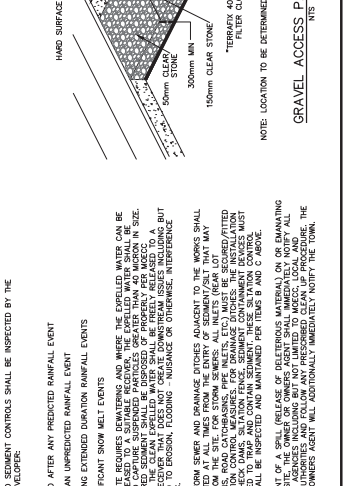
EROSION AND SEDIMENT CONTROL NOTES

1. ALL EROSION AND SEDIMENT MEASURES/DEVICES SHALL BE INSPECTED PRIOR TO ANY SITE DISTURBANCE CONSTRUCTION.
2. ALL SEDIMENT AND EROSION CONTROL MEASURES SHALL BE REPAIRED/MAINTAINED WEEKLY AND FOLLOWING ALL SIGNIFICANT RAINFALLS.
3. EROSION AND SEDIMENT CONTROL MEASURES SHALL BE MAINTAINED THROUGHOUT THE DURATION OF THE PROPOSED CONSTRUCTION PROGRAMS. THE GENERAL INTENT OF THE PROPOSED EROSION CONTROL MEASURES WILL BE MAINTAINED AT ALL TIMES.
4. INTERFERING CONSTRUCTION ACTIVITIES SHALL OCCUR ONCE:

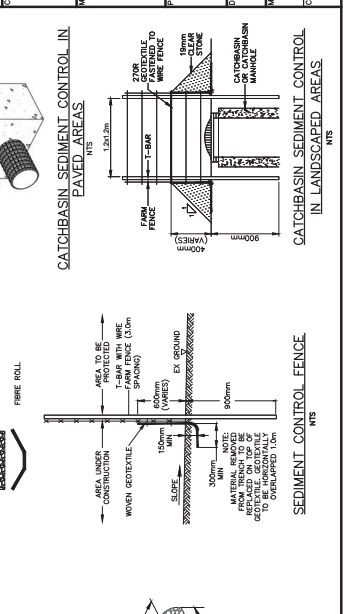
 - a. DESIGNATED ENTRANCE FOR ALL CONSTRUCTION TRAFFIC TO BE INSTALLED WITH MUD CONTROL DEVICES AND MUD MATS.
 - b. ALL MUD CONTROL DEVICES TO BE INSTALLED WITH MUD MATS.
 - c. ALL MUD CONTROL DEVICES TO BE MAINTAINED THROUGHOUT THE DURATION OF CONSTRUCTION WORKS ARE COMPLETED. MUD MATS WILL BE DELETED WITHIN 30 DAYS.
 - d. ANY DISTURBED AREA NOT TEMPORARILY SEED FOR FURTHER CONSTRUCTION WITHIN 30 DAYS.

5. INSTALL CATCHBASIN SEDIMENT CONTROL ON EXISTING CATCHBASINS PRIOR TO START UP OF CONSTRUCTION.
6. INSTALL CATCHBASIN SEDIMENT CONTROL ON NEW CATCHBASINS AT TIME OF INSTALLATION.
7. EROSION AND SEDIMENT CONTROLS SHALL BE INSPECTED BY THE:
 - WEEKLY
 - BEFORE AND AFTER ANY PREDICTED RAINFALL EVENT
 - FOLLOWING AN UNEXPECTED RAINFALL EVENT
 - DAILY, DURING EXTENDED DURATION RAINFALL EVENTS
 - AFTER SIGNIFICANT SNOW MELT EVENTS
8. WHERE A SITE REQUIRES DEWATERING AND WHERE THE EXCELLED WATER CAN BE COLLECTED TO A SUFFICIENT DEPTH, THE EXCELLED WATER SHALL BE CAPTURED IN A SUFFICIENTLY SIZED CATCHBASIN. THE CAPTURED SEDIMENT SHALL BE REMOVED FROM THE CATCHBASIN AT A REGULAR INTERVAL. THE CATCHBASIN SHALL BE MAINTAINED THROUGHOUT THE DURATION OF CONSTRUCTION. THE CATCHBASIN SHALL BE DELETED WITHIN 30 DAYS OF COMPLETION OF CONSTRUCTION. THE CATCHBASIN SHALL BE MAINTAINED THROUGHOUT THE DURATION OF CONSTRUCTION. THE CATCHBASIN SHALL BE DELETED WITHIN 30 DAYS OF COMPLETION OF CONSTRUCTION.
9. EXISTING STORM SEWER AND DRAINAGE DITCHES ADJACENT TO THE WORKS SHALL BE PROTECTED THROUGHOUT THE DURATION OF CONSTRUCTION. ALL EXISTING STORM SEWER AND DRAINAGE DITCHES SHALL BE MAINTAINED THROUGHOUT THE DURATION OF CONSTRUCTION. THE CATCHBASIN SHALL BE MAINTAINED THROUGHOUT THE DURATION OF CONSTRUCTION.
10. IN THE EVENT OF A SPILL (RELEASE OF DELETERIOUS MATERIAL) ON OR EMANATING FROM THE SITE, THE OWNER OR OPERATOR SHALL IMMEDIATELY REPORT THE SPILL TO THE LOCAL FIRE DEPARTMENT AND FOLLOW ANY PRESCRIBED CLEAN UP PROCEDURE. THE OWNER OF THE SITES SHALL BE RESPONSIBLE FOR THE CLEAN UP OF THE SPILL.

SEDIMENT CONTROL LEGEND



KEY PLAN



LEGEND

PROPOSED CATCHBASIN MANHOLE
 ○ PROPOSED STORM MANHOLE
 ○ PROPOSED CATCHBASIN MANHOLE
 ○ PROPOSED CURB STOP
 ○ PROPERTY LINE
 ○ SUBDIVISION LOT LINE
 ○ EXISTING ELEVATION
 ○ PROPOSED DRAINAGE DIRECTION
 ○ PROPOSED SINGLE DRAINAGE DIRECTION
 ○ TREE PROTECTION FENCE (GREEN PRINT CONSULTING, 2023)

PROPOSED CATCHBASIN MANHOLE
 ○ PROPOSED STORM MANHOLE
 ○ PROPOSED CATCHBASIN MANHOLE
 ○ PROPOSED CURB STOP
 ○ PROPERTY LINE
 ○ SUBDIVISION LOT LINE
 ○ EXISTING ELEVATION
 ○ PROPOSED DRAINAGE DIRECTION
 ○ PROPOSED SINGLE DRAINAGE DIRECTION
 ○ TREE PROTECTION FENCE (GREEN PRINT CONSULTING, 2023)

BENCHMARK
 ELEVATIONS ARE REFERRED TO BENCHMARK NO. 00181910999 TABLET IN THE TOP OF THE SQUARE PIER IN THE SOUTHWEST CORNER OF THE INTERSECTION OF SPRUCE AVENUE AND 125 METRES NORTHWEST OF TRAFALGAR AVENUE. ELEVATIONS ARE REFERENCED TO THE CANADIAN GEODETIC DATUM (1928-1979 ADJUSTMENT).

NOTE
 THE SURVEY WAS COMPLETED ON THE 20TH DAY OF JANUARY, 2024. THE SURVEY WAS CONDUCTED BY MR. J. B. SMITH, P. ENG. (SPEL) NO. 23-2007. CAD FILE NO. S-24001701.

REVISIONS

NO.	DATE	BY/CHKD	DESCRIPTION
1	19/02/24	MM/KL	ISSUED FOR T&E/OPS
2	17/12/23	MM/KL	ISSUED FOR COORDINATION

DESIGN
 Drawn: MM, Date: 02/29/24
 Checked: KL, Date: 02/29/24

APPROVALS
 Municipal: [Signature]
 Regional: [Signature]
 Manager of Development Services

FIELD NOTES
 APPROVED IN PRINCIPLE SUBJECT TO DETAIL APPROVALS AND FURTHER REVISIONS TO MEET OAKVILLE STANDARDS AND SPECIFICATIONS.
 Bell: [] Hydrant []
 Gas: [] Cable []
 Water: []
 Prof.: []
 Other: []

DATE
 2024-11-29

SCALE
 1:2000

PROJECT
 SPRUCE ROSE INC. RESIDENTIAL SUBDIVISION

DRAWING TITLE
 EROSION AND SEDIMENT CONTROL PLAN

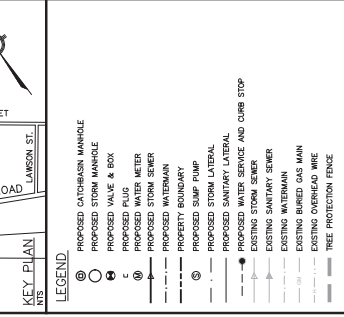
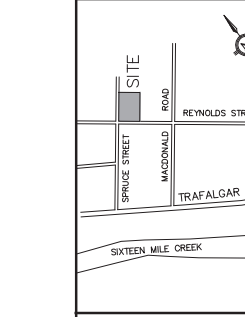
Municipal No.
 24T-XXXX

Regional No.
 1819

Contract No.
 1819

Sheet
 E1

1819



BENCHMARK
 HAINES BENCHMARK (BM) MARK No. 0013101989
 HAINES AN ELEVATION OF 43.3 METERS
 TABLE IN THE TOP OF THE SQUARE PER IN THE SHORTEST
 DISTANCE TO THE BENCHMARK. THE BENCHMARK IS
 SUMNER AVENUE AND 125 METRES NORTHEAST OF TRAFALGAR
 AVENUE. THE BENCHMARK IS A CANADIAN GEODETIC
 (CGVD-1928 1978).
NOTE
 THE SURVEY WAS COMPLETED ON THE 20TH DAY OF JANUARY,
 2024 BY: J. B. 23-053 CAD FILE NO. 23-053010

NO.	DATE	DESCRIPTION
1	13/02/24	ISSUED FOR ZBA/DFPS
2	13/02/24	ISSUED FOR COORDINATION
3	13/02/24	ISSUED FOR REVISIONS
4	13/02/24	ISSUED FOR REVISIONS
5	13/02/24	ISSUED FOR REVISIONS
6	13/02/24	ISSUED FOR REVISIONS
7	13/02/24	ISSUED FOR REVISIONS
8	13/02/24	ISSUED FOR REVISIONS
9	13/02/24	ISSUED FOR REVISIONS
10	13/02/24	ISSUED FOR REVISIONS
11	13/02/24	ISSUED FOR REVISIONS
12	13/02/24	ISSUED FOR REVISIONS
13	13/02/24	ISSUED FOR REVISIONS
14	13/02/24	ISSUED FOR REVISIONS
15	13/02/24	ISSUED FOR REVISIONS
16	13/02/24	ISSUED FOR REVISIONS
17	13/02/24	ISSUED FOR REVISIONS
18	13/02/24	ISSUED FOR REVISIONS
19	13/02/24	ISSUED FOR REVISIONS
20	13/02/24	ISSUED FOR REVISIONS
21	13/02/24	ISSUED FOR REVISIONS
22	13/02/24	ISSUED FOR REVISIONS
23	13/02/24	ISSUED FOR REVISIONS
24	13/02/24	ISSUED FOR REVISIONS
25	13/02/24	ISSUED FOR REVISIONS
26	13/02/24	ISSUED FOR REVISIONS
27	13/02/24	ISSUED FOR REVISIONS
28	13/02/24	ISSUED FOR REVISIONS
29	13/02/24	ISSUED FOR REVISIONS
30	13/02/24	ISSUED FOR REVISIONS
31	13/02/24	ISSUED FOR REVISIONS
32	13/02/24	ISSUED FOR REVISIONS
33	13/02/24	ISSUED FOR REVISIONS
34	13/02/24	ISSUED FOR REVISIONS
35	13/02/24	ISSUED FOR REVISIONS
36	13/02/24	ISSUED FOR REVISIONS
37	13/02/24	ISSUED FOR REVISIONS
38	13/02/24	ISSUED FOR REVISIONS
39	13/02/24	ISSUED FOR REVISIONS
40	13/02/24	ISSUED FOR REVISIONS
41	13/02/24	ISSUED FOR REVISIONS
42	13/02/24	ISSUED FOR REVISIONS
43	13/02/24	ISSUED FOR REVISIONS
44	13/02/24	ISSUED FOR REVISIONS
45	13/02/24	ISSUED FOR REVISIONS
46	13/02/24	ISSUED FOR REVISIONS
47	13/02/24	ISSUED FOR REVISIONS
48	13/02/24	ISSUED FOR REVISIONS
49	13/02/24	ISSUED FOR REVISIONS
50	13/02/24	ISSUED FOR REVISIONS

TRAFALGAR ENGINEERING
 PROFESSIONAL ENGINEERING CONSULTANTS
 10000 HWY 104, SUITE 100, OAKVILLE, ONTARIO L6L 6K7
 TEL: (905) 846-2300 FAX: (905) 846-2301
 www.trafalgar-engineering.com

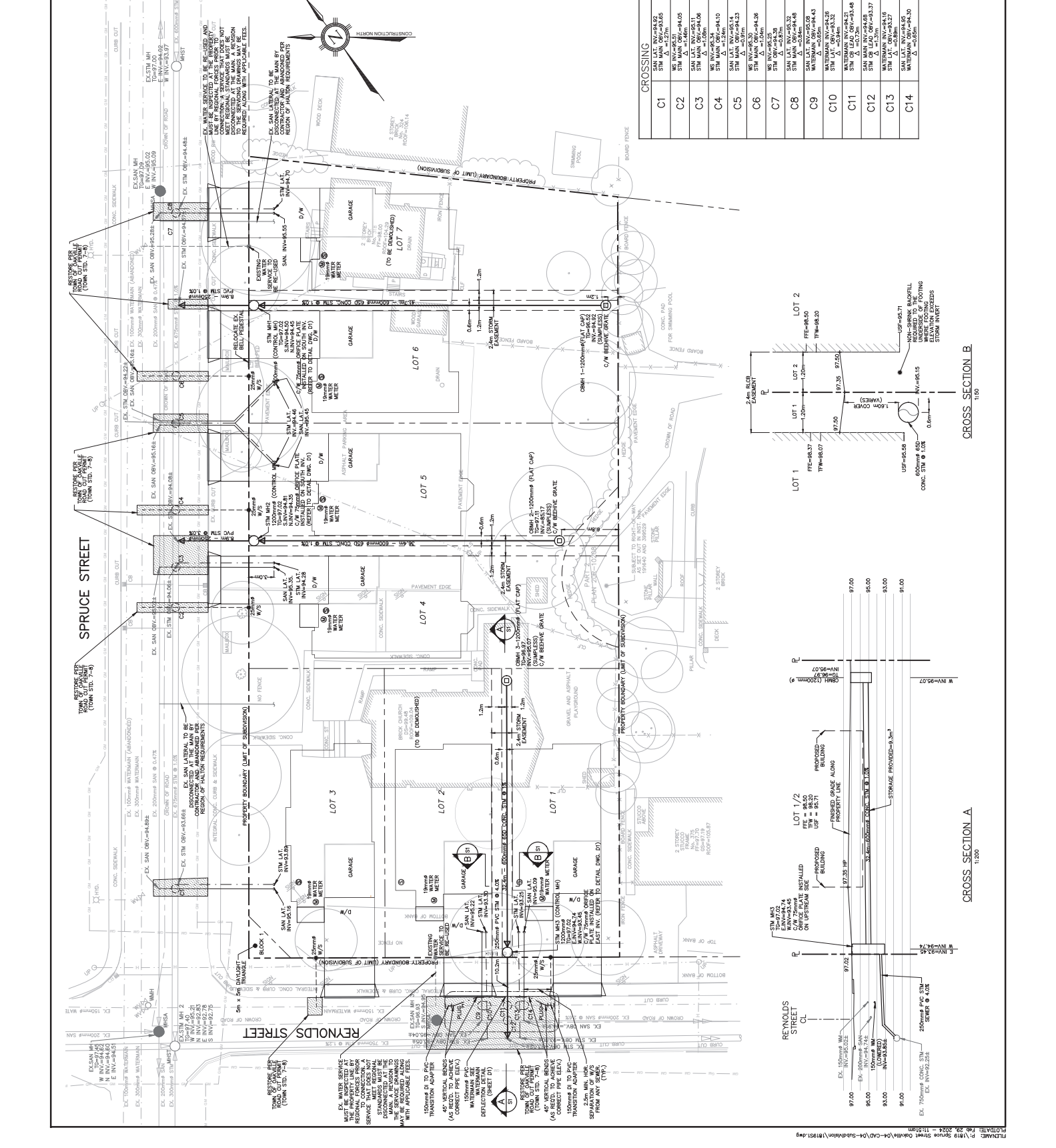
OAKVILLE

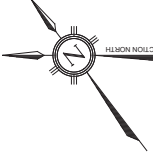
Halton

SPRUCE ROSE INC.
 RESIDENTIAL SUBDIVISION

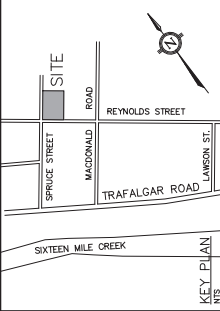
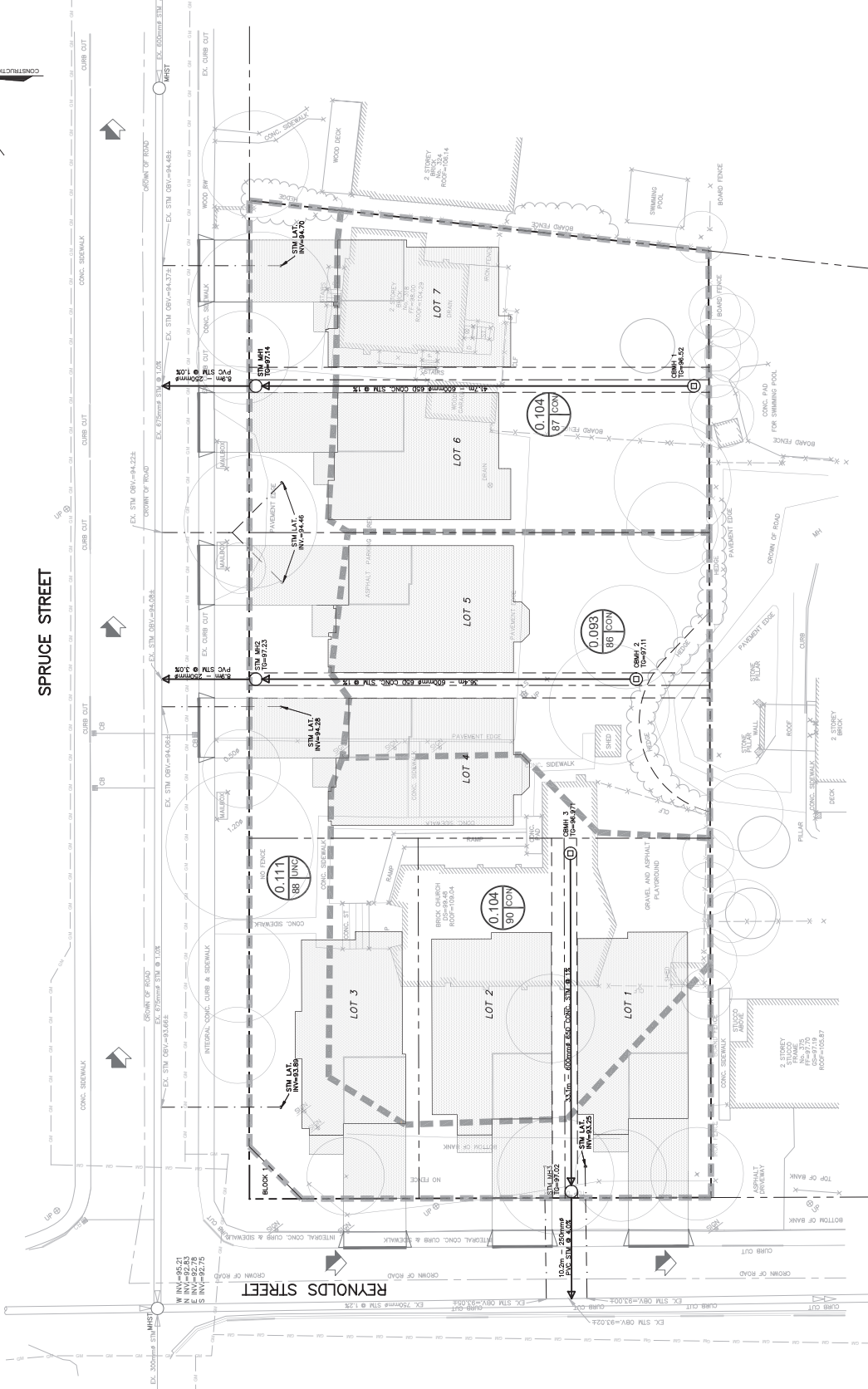
SERVICING PLAN

Project No. 24T-XXXX
 Drawing No. 1819
 Sheet SI





SPRUCE STREET



LEGEND

- 0.814
88 UNC
DRAINAGE AREA IN HECTARES
- CONTROLLED/UNCONTROLLED FLOWS
- SEE CURVE NUMBER
- STORM DRAINAGE AREA BOUNDARY
- PROPOSED CATCHMENT MANHOLE
- PROPOSED STORM MANHOLE
- PROPOSED STORM SIEMER
- PROPERTY LINE
- PROPOSED STORM LATERAL
- OVERLAND FLOW ROUTE
- IMPERVIOUS AREA

BENCHMARK
THE SURVEY WAS COMPLETED ON THE 28TH DAY OF JANUARY, 2024. THE SURVEY WAS CONDUCTED BY MRS. JENNIFER L. HALL, P. ENG. (NO. 5492) AND MRS. JENNIFER L. HALL, P. ENG. (NO. 5492). THE SURVEY WAS CONDUCTED IN ACCORDANCE WITH THE SURVEYING ACT AND THE SURVEYING REGULATIONS. THE SURVEY WAS CONDUCTED IN ACCORDANCE WITH THE SURVEYING ACT AND THE SURVEYING REGULATIONS.

NOTE
THE SURVEY WAS COMPLETED ON THE 28TH DAY OF JANUARY, 2024. THE SURVEY WAS CONDUCTED BY MRS. JENNIFER L. HALL, P. ENG. (NO. 5492) AND MRS. JENNIFER L. HALL, P. ENG. (NO. 5492). THE SURVEY WAS CONDUCTED IN ACCORDANCE WITH THE SURVEYING ACT AND THE SURVEYING REGULATIONS.

NO.	DATE	DESCRIPTION
1	29/02/24	ISSUED FOR 784/0FS
2	13/02/24	ISSUED FOR COORDINATION
3	13/02/24	ISSUED FOR REVISIONS

DESIGN	DATE	BY	CHK'D	APP'D
1	02/29/24	MM	MM	MM

SCALE	DATE	BY	CHK'D	APP'D
1	02/29/24	MM	MM	MM

APPROVALS	DATE	BY	CHK'D	APP'D
1	02/29/24	MM	MM	MM

DATE	BY	CHK'D	APP'D
02/29/24	MM	MM	MM

DATE	BY	CHK'D	APP'D
02/29/24	MM	MM	MM

DATE	BY	CHK'D	APP'D
02/29/24	MM	MM	MM

DATE	BY	CHK'D	APP'D
02/29/24	MM	MM	MM

DATE	BY	CHK'D	APP'D
02/29/24	MM	MM	MM

DATE	BY	CHK'D	APP'D
02/29/24	MM	MM	MM

DATE	BY	CHK'D	APP'D
02/29/24	MM	MM	MM

DATE	BY	CHK'D	APP'D
02/29/24	MM	MM	MM

DATE	BY	CHK'D	APP'D
02/29/24	MM	MM	MM

DATE	BY	CHK'D	APP'D
02/29/24	MM	MM	MM

DATE	BY	CHK'D	APP'D
02/29/24	MM	MM	MM

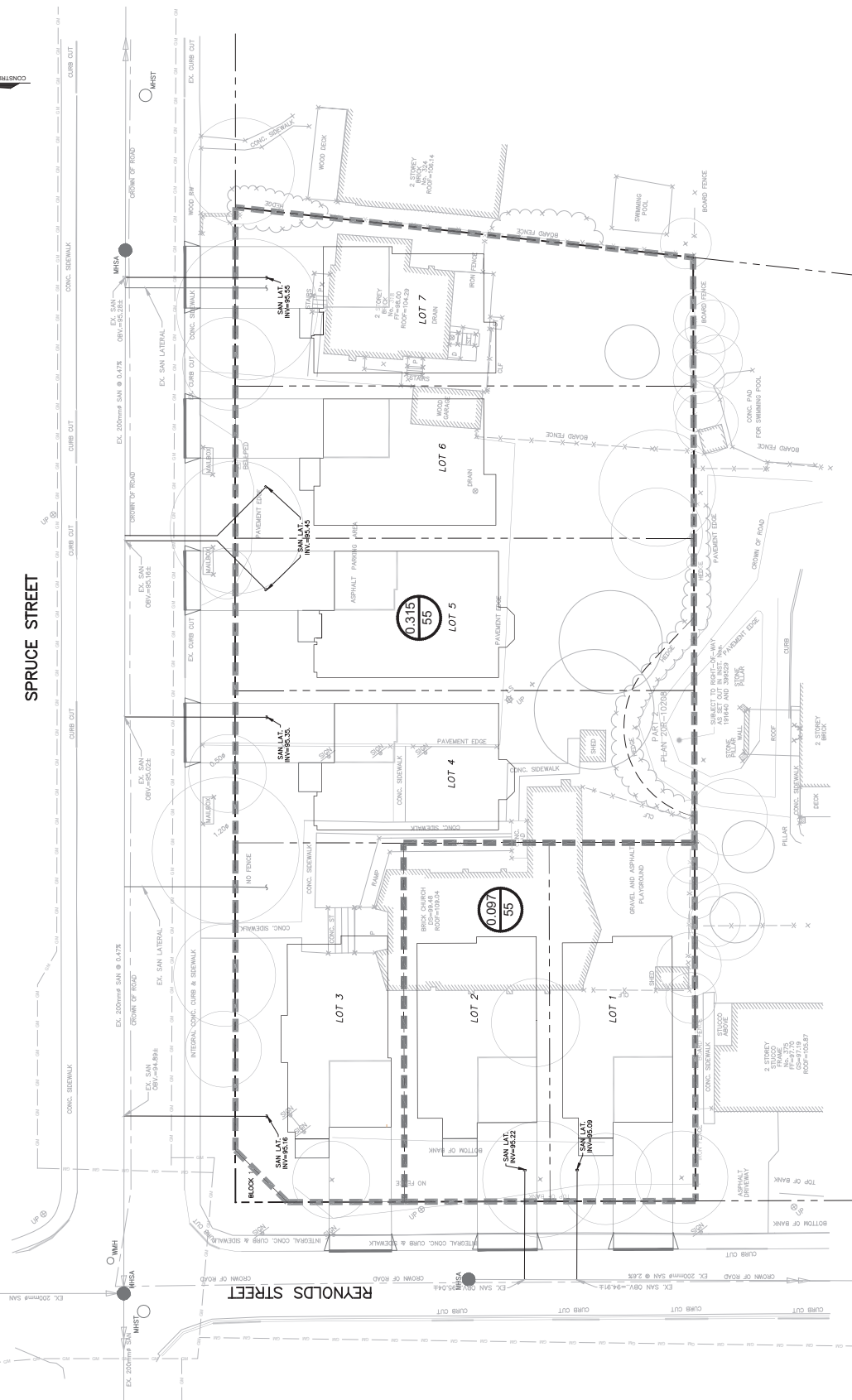
TRAFALGAR ENGINEERING
CONSULTANTS

OAKVILLE Halton

SPRUCE ROSE INC. RESIDENTIAL SUBDIVISION

STORM DRAINAGE AREA PLAN

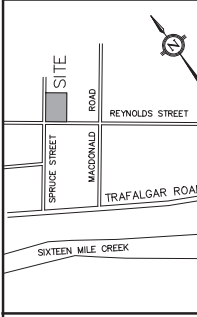
Project No. 24T-XXXX
Municipal No. 1819
Consultant No. S2



SPRUCE STREET

REYNOLDS STREET

KEY PLAN
 NS
 LEAD



0.283
 135

PROPERTY LINE
 EXISTING SANITARY SEWER
 EXISTING SANITARY MANHOLE
 EXISTING SANITARY LATERAL
 PROPOSED SANITARY LATERAL

BENCHMARK
 REFERRED TO BENCHMARK NO. 00183111989
 HAVING AN ELEVATION OF 94.30 METRES, IN THE SOUTHWEST
 CORNER OF GEORGE'S SQUARE, 20.1 METRES NORTHWEST OF
 WILSON AVENUE AND 12.5 METRES NORTHEAST OF TRAFALGAR
 ROAD, OAKVILLE, ONTARIO, CANADA.
 METRIC DATA OF 1928, 1972 AND 1978
 (CSD-1928, 1978).

NOTE
 THE SURVEY WAS COMPLETED ON THE 20TH DAY OF JANUARY,
 2024, BY THE SURVEYOR'S OFFICE.
 JOB NO. 23-000F CAD FILE NO. 23-000F01

No.	DATE	DESCRIPTION	BY	CHK'D	APP'D
1	13/02/24	ISSUED FOR COORDINATION			
2	29/02/24	ISSUED FOR 784/DP5			

APPROVALS

Municipal APPROVED IN PRINCIPLE SUBJECT TO DETAIL DESIGN AND CONSTRUCTION PERMITS
 APPROVED BY: [Signature]

Regional Approval: [Signature]

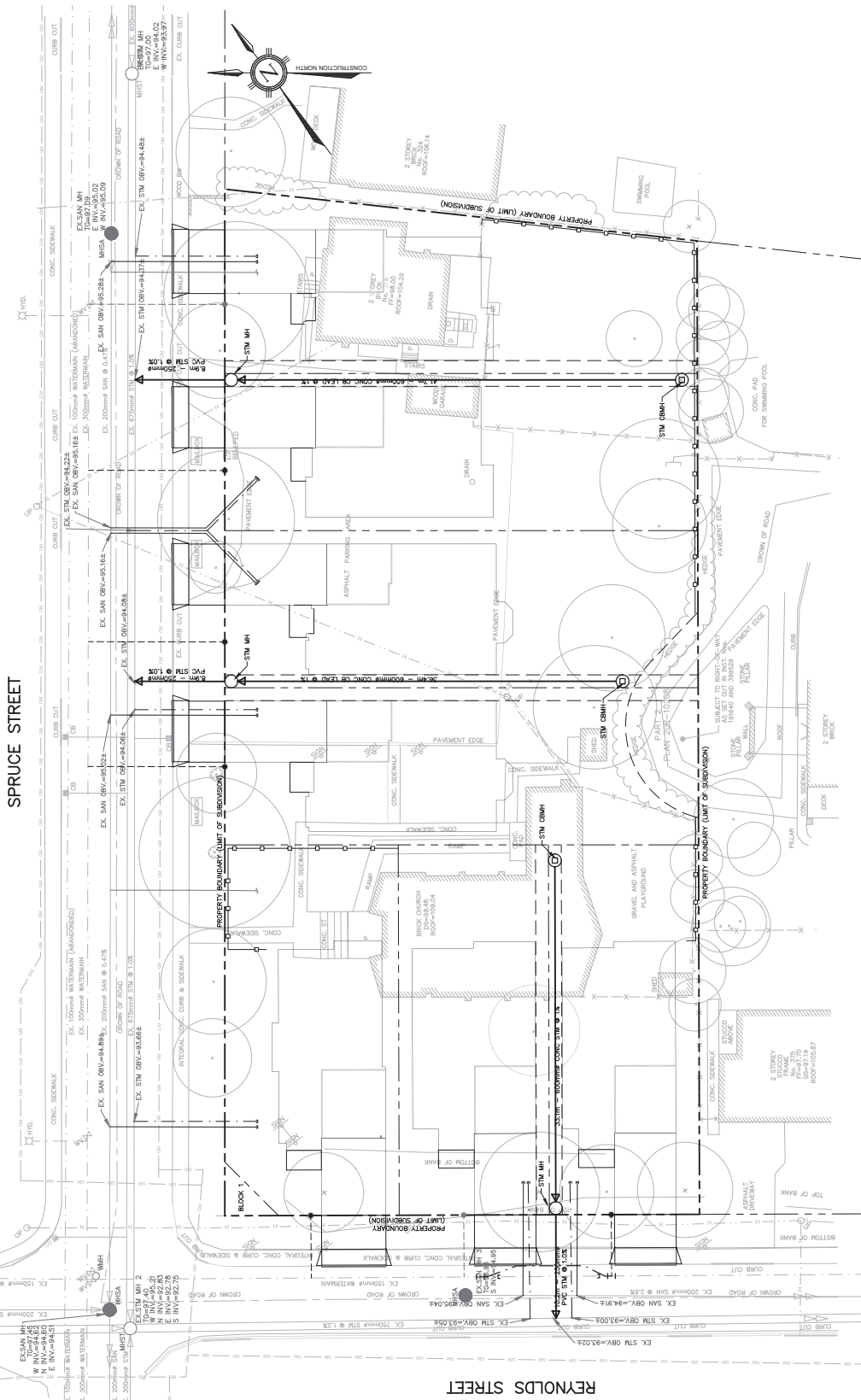
Manager of Development Services

TRAFALGAR ENGINEERING
 CONSULTANTS
 1500 SHEPPARD AVENUE EAST, SUITE 100
 OAKVILLE, ONTARIO L6H 4R8
 TEL: 905.335.3838
 FAX: 905.335.3839
 WWW.TRAFALGARENGINEERING.COM

OAKVILLE

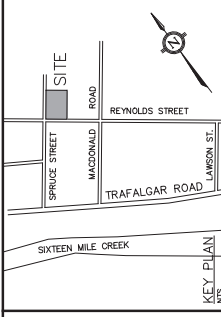
Halton

PROJECT: SPRUCE ROSE INC. RESIDENTIAL SUBDIVISION
 DRAWING TITLE: SANITARY DRAINAGE AREA PLAN
 Municipal No.: 24T-XXXX
 Regional No.:
 Consultant No.: 1819
 Sheet: SS



SPRUCE STREET

REYNOLDS STREET



- LEGEND**
- PROPOSED CATCHBASIN
 - PROPOSED STORM MANHOLE
 - PROPOSED VALVE & BOX
 - PROPOSED PIPES
 - PROPOSED METER
 - PROPOSED STORM SEWER
 - PROPOSED WATERMAIN
 - PROPERTY BOUNDARY
 - PROPOSED SUMP PUMP
 - PROPOSED WATER SERVICE AND CURB STOP
 - PROPOSED SANITARY SERVICE
 - PROPOSED STORM SERVICE
 - EXISTING STORM SEWER
 - EXISTING WATERMAIN
 - EXISTING WATERMETER
 - EXISTING SANITARY MANHOLE
 - EXISTING OVERHEAD WIRE

BENCHMARK

MARKED BY THE SURVEYOR WITH BENCHMARK NO. 001183101899
HAVING AN ELEVATION OF 43.31 METERS
MARKED IN THE TOP OF THE SQUARE PIER IN THE SOUTHWEST
CORNER OF THE LOT 218 AND 219
SUMMER AVENUE AND 12.5 METRES NORTHWEST OF TRAFALGAR
AVENUE
ELEVATIONS ARE REFERENCED TO THE CANADIAN GEODETIC
DATUM (CGD83) 1985. 1978 ADJUSTMENT
(CGVD-1985 1978)

NOTE

THE SURVEY WAS COMPLETED ON THE 20TH DAY OF JANUARY,
2024 AT 11:50 AM LOCAL TIME
BY THE SURVEYOR AND SURVEYORS
2024 B.C. 23-055 CAD FILE NO. 24-00510

2	19/02/24	M/W/G/L	ISSUED FOR T&A/D/S
1	07/12/23	M/W/M	ISSUED FOR COORDINATION
1	03/09/23	M/W/M	ISSUED FOR PERMITS
1	03/09/23	M/W/M	ISSUED FOR PERMITS

DESIGN: MM, CHK: PC, DATE: 02/29/24

SCALE: 0 5 10m

REFERENCES: 1:2000

MUNICIPAL APPROVALS: APPROVED IN PRINCIPLE SUBJECT TO DETAIL DESIGN AND CONSTRUCTION PERMITS FROM THE CITY OF OAKVILLE STANDARDS AND SPECIFICATIONS

REGIONAL APPROVALS: APPROVED IN PRINCIPLE SUBJECT TO DETAIL DESIGN AND CONSTRUCTION PERMITS FROM THE REGIONAL MUNICIPALITY OF HALTON STANDARDS AND SPECIFICATIONS

MANAGER OF DEVELOPMENT SERVICES: [Signature]

DATE: [Signature]

TRAFALGAR ENGINEERING
P.L.L.C. (SINCE 1988)
1000 HWY 10 EAST, SUITE 100
OAKVILLE, ONTARIO L6L 1A8
TEL: 905.335.8888
WWW.TRAFALGARENGINEERING.COM

OAKVILLE
Halton Region

Halton
Regional Municipality

PROJECT: SPRUCE ROSE INC. RESIDENTIAL SUBDIVISION

DRAWING TITLE: COMPOSITE UTILITY PLAN

Municipal No.: 24T-XXXX

Regional No.: 1819

Contract No.: -

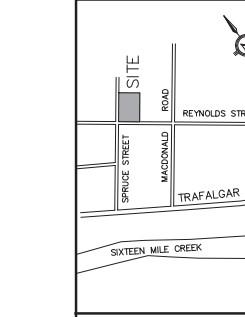
Sheet: CUT

BEL CANADA	NAME: _____	DATE: _____
CHRYSLER FINANCIAL GROUP	NAME: _____	DATE: _____
CODEDIO CABLE	NAME: _____	DATE: _____
ENVIROPHASE GAS	NAME: _____	DATE: _____

*GAS LINES ARE SHOWN FOR LOCATION PURPOSES ONLY. GAS WILL BE SUPPLIED ON END USER REQUIREMENTS

DRAWING IS BASED ON DESIGN AND CONSTRUCTION PERMITS FROM THE CITY OF OAKVILLE STANDARDS AND SPECIFICATIONS AND IS SUBJECT TO APPROVAL BY THE CITY OF OAKVILLE STANDARDS AND SPECIFICATIONS DEPARTMENT. ANY CHANGES TO THE DRAWING MUST BE APPROVED BY THE CITY OF OAKVILLE STANDARDS AND SPECIFICATIONS DEPARTMENT.

NO UTILITY REPAIRS OR OTHER ASBESTOS-CONTAINING MATERIALS TO BE INSTALLED ON TOP OF TRENCH.



- LEGEND**
- PROPOSED CATCHBASIN
 - PROPOSED WALKWAY
 - PROPOSED WALKWAY & SOA
 - EXISTING ELEVATION
 - INTERPOLATED EXISTING ELEVATION TO REMAIN
 - PROPOSED FINISHED ELEVATION
 - PROPOSED DRAINAGE DIRECTION
 - PROPOSED SWALE DRAINAGE DIRECTION
 - EXISTING OVERLAND FLOW DIRECTION
 - PROPOSED OVERLAND FLOW DIRECTION
 - PROPOSED SLOPE
 - RISE PROTECTION FENCE (GREEN PRINT CONSULTING, 2023)
 - PROPERTY LINE
 - SUBDIVISION LOT LINE

BENCHMARK

THE SURVEY WAS COMPLETED ON THE 20TH DAY OF JANUARY, 2024. THE BENCHMARK WAS SET AT THE CORNER OF SPRUCE STREET AND REYNOLDS STREET. THE BENCHMARK IS A 1.5M METRE NORTHWEST OF THE CORNER OF SPRUCE STREET AND REYNOLDS STREET. THE BENCHMARK IS A 1.5M METRE NORTHWEST OF THE CORNER OF SPRUCE STREET AND REYNOLDS STREET. THE BENCHMARK IS A 1.5M METRE NORTHWEST OF THE CORNER OF SPRUCE STREET AND REYNOLDS STREET.

NOTES

- 20/02/24 MW/VS ISSUED FOR ZBA/DPS
- 13/02/24 MW/AM ISSUED FOR COORDINATION

NO. DRAWING BY/CHK'D/APP'D
 Design MW/PC/PC
 Drawn MW/CHK'D/APP'D
 Scale 0 5 10m
 Date 02/29/24
 Project No. 1819-090

Field Notes

APPROVED IN PRINCIPLE SUBJECT TO DETAIL AND OAKVILLE STANDARDS AND SPECIFICATIONS.

Manager of Development Services

TRAFALGAR ENGINEERING
 1111 SPRUCE STREET, OAKVILLE, ONTARIO L6M 3K7
 TEL: 905.335.1111 FAX: 905.335.1112
 WWW.TRAFALGAR-ENGINEERING.COM

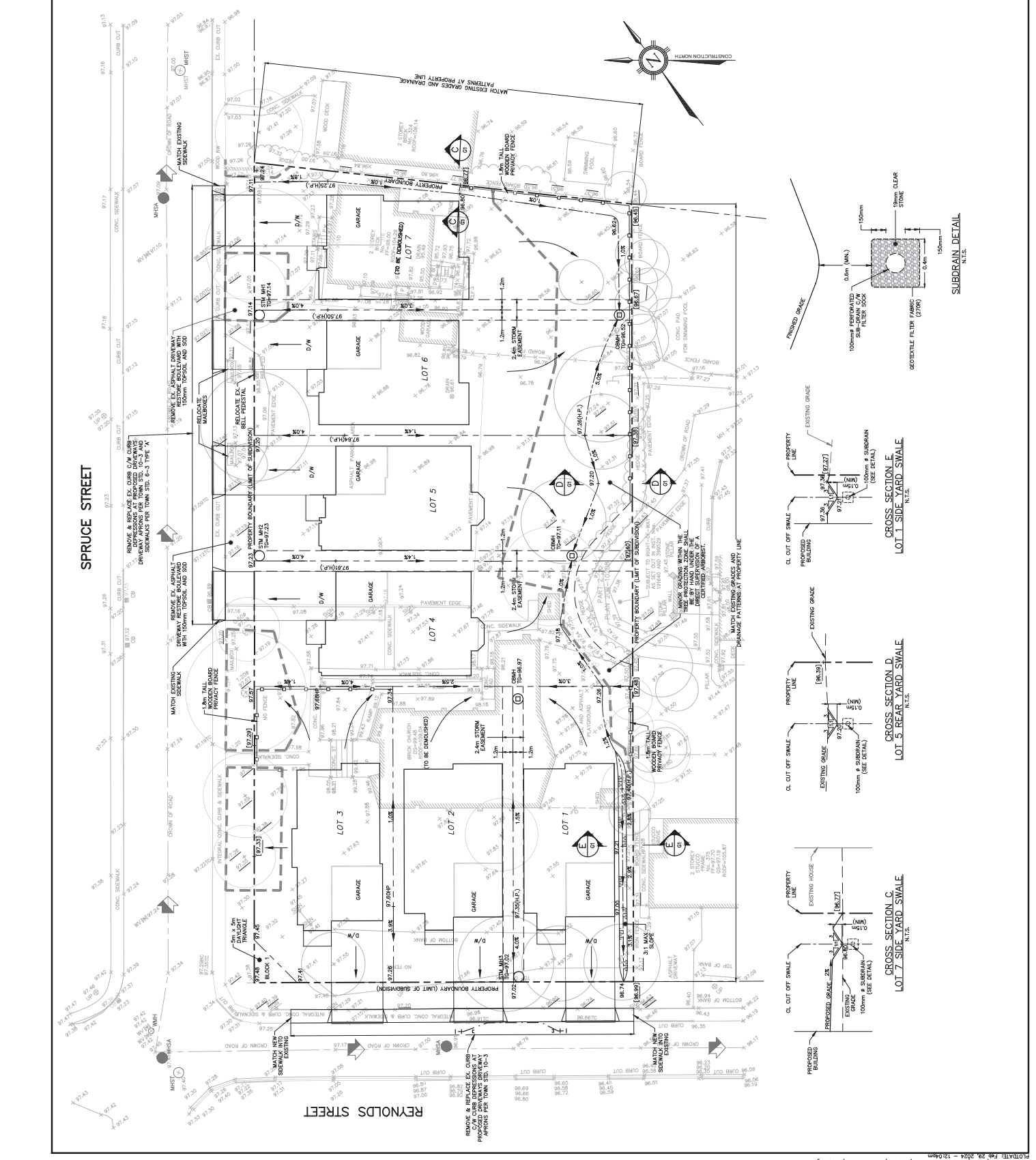
OAKVILLE

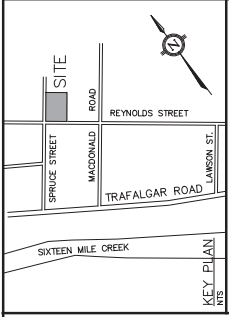
Halton

SPRUCE ROSE INC. RESIDENTIAL SUBDIVISION

GRADING PLAN

Municipal No. 24T-XXXX
 Regional No. 1819
 Consultation No. 1819
 Sheet G1





BENCHMARK
 REFERENCED TO BENCHMARK No. 001810/1999
 HAVING AN ELEVATION OF 93.38 METRES. IN THE SOUTHWEST
 CORNER OF GEORGE SQUARE, 20.3 METRES NORTHWEST OF
 ROYAL AVENUE AND 125 METRES NORTHWEST OF TRAFALGAR
 ROAD. THE BENCHMARK IS A CANADIAN GEODETIC
 METRIC DATE OF 1928, 1970 ADJUSTMENT
 (CGVD-1928/1978).

NOTE
 THE SURVEY WAS COMPLETED ON THE 20TH DAY OF JANUARY,
 2024. THE SURVEY WAS CONDUCTED BY TRAFALGAR ENGINEERING
 LTD. No. 23-0007 CAD File No. 23-00701

No.	Date	Author	Checked	By	File	Project	Date	Scale	References
1	13/02/24	MW/M	PC	MM	R1916.dwg		02/29/24	1:500	
2	29/02/24	MW/SL				ISSUED FOR T&P/DPS			
3	13/02/24	MW/M				ISSUED FOR COORDINATION			

APPROVALS
 Municipal APPROVED IN PRINCIPLE SUBJECT TO DETAIL
 OKAYVILLE STANDARDS AND SPECIFICATIONS.
 Date: _____
 Regional Approval: _____
 Manager of Development Services

TRAFFALGAR ENGINEERING
 11000 Highway 10, Oakville, ON L6M 4K2
 (905) 846-7777

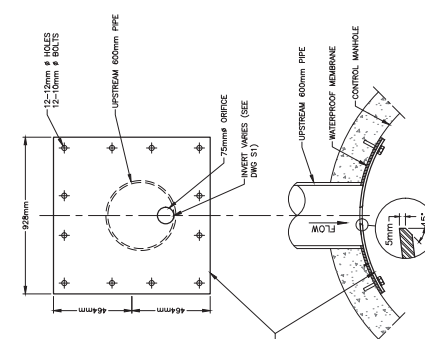
OAKVILLE Halton

PROJECT
 SPRUCE ROSE INC.
 RESIDENTIAL SUBDIVISION

DRAWING TITLE
 SECTIONS AND DETAILS

Municipal No. 24T-XXXX
 Regional No. _____

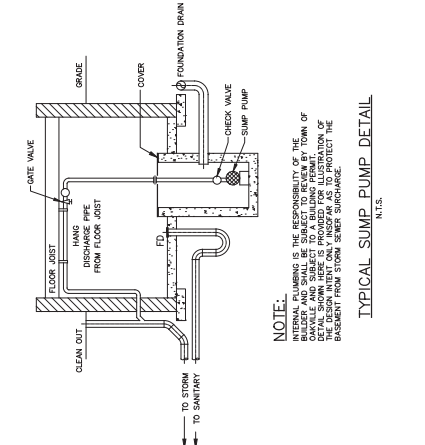
Consultation No. 1819
 Sheet 01



CONTROL SUMP DETAIL
 N.T.S.

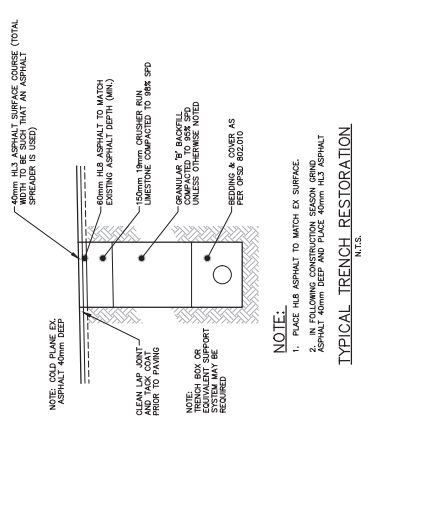
NOTE:
 ALL STEEL TO BE HOT DIP GALVANIZED AFTER
 WELDING. PROVIDE 10mm GULLY STEEL COVER TO
 FIT MANHOLE.

**BENCH MARK AT
 SERVICE OPENING**



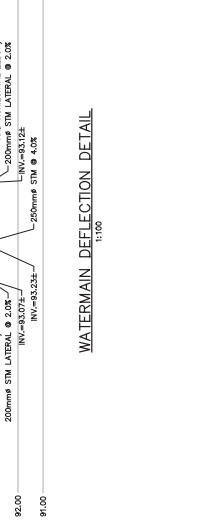
TYPICAL SUMP PUMP DETAIL
 N.T.S.

NOTE:
 INTERNAL PLUMBING IS THE RESPONSIBILITY OF THE
 OWNER. THE DESIGN INTENT OF THIS DETAIL IS TO
 PROTECT THE BASEMENT FROM STORM SEWER SURCHARGE.



TYPICAL TRENCH RESTORATION
 N.T.S.

NOTE:
 1. PLACE H/B ASPHALT TO MATCH EX SURFACE.
 2. IN FOLLOWING CONSTRUCTION SEASON GRIND
 ASPHALT 40mm DEEP AND PLACE 40mm H/B ASPHALT



WATERMAIN DEFLECTION DETAIL
 1:100

