

Anemone canadensis (approx. 102 plants)
- Number to be confirmed at start up.

Hydrangea arborescens 'Invincible Ruby'
(approx 15 plants)
- Number to be confirmed at start up.

Existing boulevard to be preserved

Existing hedge to be preserved

General planting pattern for existing garden
to guide supplemental plantings

Existing garden edge
Anemone canadensis

Hydrangea arborescens 'Invincible Ruby'

Existing shrub hedge

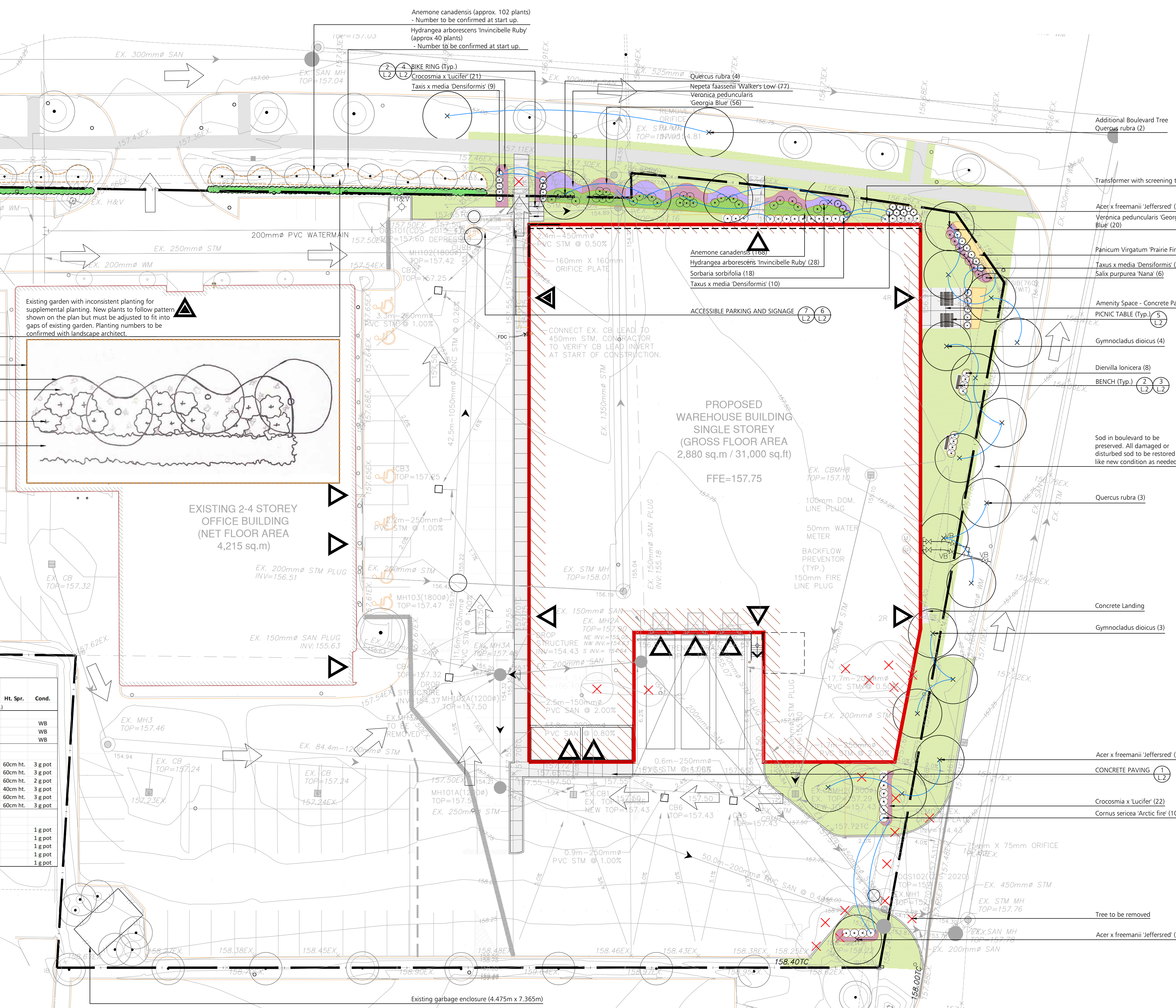
Existing Tree to be Preserved

PLANT LIST

Key	Botanical Name	Common Name	Qty.	Cal.	Ht. Spr.	Cond.
TREES						
AF	Acer x freemanii 'Jeffersred'	Autumn Blaze Maple	8	60mm		WB
Gd	Gymnocladus dioicus	Kentucky Coffee Tree	7	60mm		WB
Qr	Quercus rubra	Red Oak	9	60mm		WB
SHRUBS						
Ca	Cornus sericea 'Arctic Fire'	Redbark Dogwood	10	60cm ht.	3 g pot	
DI	Diervilla lonicera	Bush Honeysuckle	8	60cm ht.	3 g pot	
Ha	Hydrangea arborescens 'Invincible Ruby'	Invincible Ruby Hydrangea	28	60cm ht.	2 g pot	
Td	Taxus x media 'Densiformis'	Dense Yew	30	40cm ht.	3 g pot	
Sp	Salix purpurea 'Nana'	Blue Arctic Willow	6	60cm ht.	3 g pot	
Ss	Sorbaria sorbifolia	False Spirea	18	60cm ht.	3 g pot	
PERENNIALS, GRASSES AND GROUNDCOVER						
Ac	Anemone canadensis	Canada Anemone	168		1 g pot	
CI	Crocsmia x 'Lucifer'	Monbretia	43		1 g pot	
NF	Nepeta faassenii 'Walker's Low'	Catmint	77		1 g pot	
Pv	Panicum virgatum 'Prairie Fire'	Prairie Fire Switch Grass	44		1 g pot	
Vp	Veronica peduncularis 'Georgia Blue'	Russian Speedwell	76		1 g pot	

- NOTES:**
- Plant material to conform to the Canadian Nursery Trades association metric Guide Specifications for Nursery Stock, latest edition.
 - Contractor to verify quantities listed: plant quantities to be supplied as shown in plan in case of discrepancies between plan and quantities listed.
 - All plant material to be sourced from nurseries with an 800km radius.
 - Provide 2 year warranty for all plant material.

LANDSCAPE PLAN
1:250



LEGEND

- Existing Tree to be Preserved
- Proposed Caliper Tree
- ⊗ Evergreen shrub
- ⊙ Deciduous shrub
- ▬ Existing Hedge to be Preserved
- ▬ Perennials and Grasses
- ▬ Sod
- ▬ Existing Pedestrian Concrete Paving
- ▬ Existing Shrub Border to be Replanted
- ▬ Pic-nic Table
- ▬ Bench
- ▬ Property Line

Note: All Drawings by Baker Turner inc. to be Printed in Colour.

REVISIONS

NO.	DATE	DESCRIPTION

Mar 18, 2024 Issued for Submission
Feb 28, 2024 Issued for Client Review

DATE DESCRIPTION

NOTE: Contractor is to check and verify all dimensions and conditions on the project, and is to immediately report any discrepancies to the landscape architect before proceeding with the work.

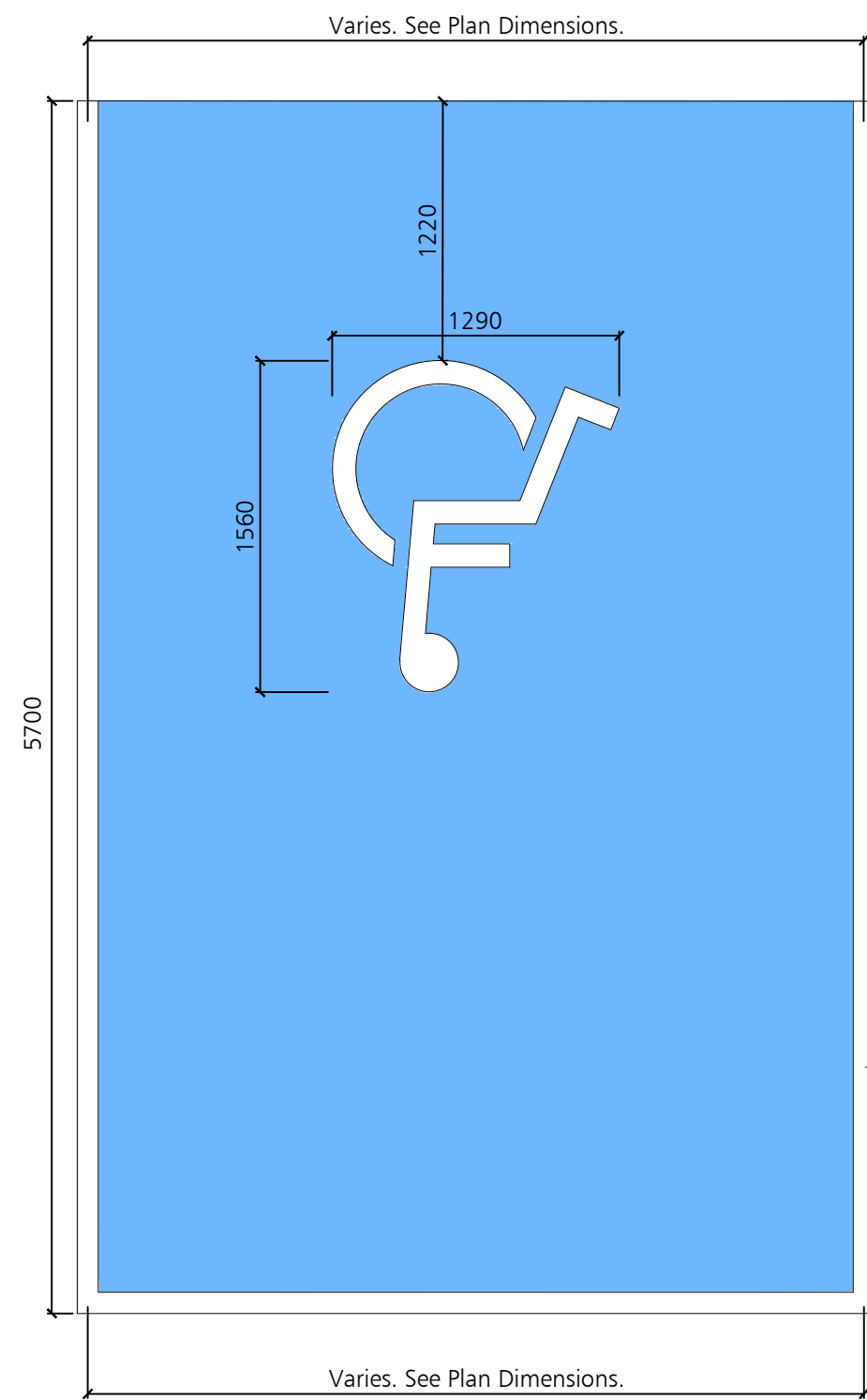


Landscape Architecture | Site Design
Suite 234
2010 Winston Park Drive
Oakville Ontario L6H 5R7
Tel: (289) 291-7620
email: tba@bakerturner.com

Project Title

Bristol Circle Warehouse
2364 Bristol Circle
Oakville, ON
Landscape Plan

Date	Issued
May 2023	
Job Number	Drawn By
BTI-1685	JC, JW
Scale	Checked By
1:250	MT
Sheet Number	File Number
LP.1 of 3	



Accessible parking line painting as per OPSS 1712 as per Town of Oakville Universal Design Standards. Line Painting to be white. Accessible parking space type A background to be painted blue as per Town of Oakville specifications.

- NOTES:**
1. Stencil of universal accessibility logo to be provided for approval prior to installation.
 2. Contractor to mock-up parking layout on asphalt. Landscape Architect to review and approve layout on site prior to painting.
 3. Paint colour samples and supplier information to be provided for approval prior to ordering. Paint to be professional grade traffic marking paint by Seal Master, available through Sherwin Williams.

ACCESSIBLE PARKING
NTS

6
L.2

BIKE RING
NTS

4
L.2

MBR-2300-00001 **ICONIC**

Sustainability Facts

Unit Size	One (1) MBR-2300-00001 Bike Rack
Carbon footprint (GWP)	139 kg CO ₂ -Eq <i>Measured in kilograms of carbon dioxide equivalent</i>
Total energy use (TPE)	2480 MJ-Eq <i>Measured in megajoules of energy equivalent</i>
Water use (WDP)	1.9 m ³ water <i>Measured in cubic metres of water</i>
Material recyclability	100%
LEED v4.1 Credits	
Type III Environmental Product Declaration	
Material Inventory	
Low VOC finishes	
Free of Red List substances	

DESCRIPTION: 2300 Series - Iconic Bike Rack: Cast Aluminum, Surface Mount, 2 Bike Configuration

FINISH: The Maglin Powdercoat System provides a durable finish on all aluminum castings.

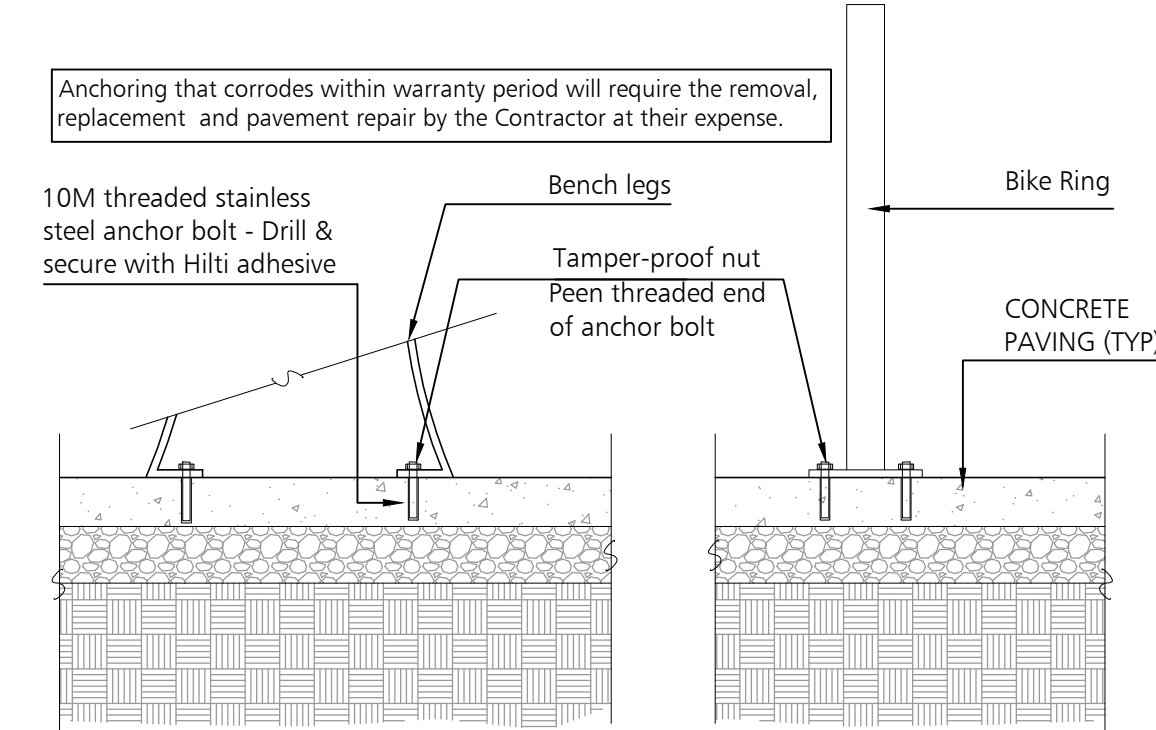
INSTALLATION: The bike rack is delivered in parts. Reference INSTALL_MBR-2300-00001 PDF for more information.

TO SPECIFY: Select MBR-2300-00001
Choose:
- Powdercoat Color

HEIGHT: 26 1/2" (67.3cm) **LENGTH:** 20 1/2" (52cm) **WIDTH:** 2" (5.1cm) **WEIGHT:** 18 lbs (8kg)

MAGLIN Site Furniture
T 800 716 6508
F 877 260 9393
www.maglin.com
sales@maglin.com

- All drawings, specifications, design and details on this page remain the property of Maglin Site Furniture Inc. and may not be used without Maglin authorization.
- Details and specifications may vary due to continuing improvements of our products.



BENCH AND BIKE RING - SURFACE MOUNT
1:20

2
L.2

CONCRETE SPECIFICATIONS

1. Concrete materials and methods of construction to comply with Can3-A23.1-M77
2. Contractor to verify accuracy of concrete details and reinforcement prior to installation
3. Provide the following materials accordingly;
 - 3.1. Cement - to Can3-A5-M77M Normal Type 10
 - 3.2. Aggregates (for concrete) - to Can3-A23.1-M77
 - 3.3. Reinforcing Steel (if specified) - to CSA 630.12-1972
 - 3.4. Wire Ties (if specified) - to CSA 630.3-1972 (R1979) Plain, cold drawn annealed steel wire
 - 3.5. Form Stripping Agent - Colourless mineral oil, free of kerosene
 - 3.6. Latex Bonding Agent - Sika Bond by Sikamix Ltd. or approved equal
 - 3.7. Form Lumber - Clean, free of loose knots, splits and with repairs made smoothly and securely.
 - 3.8. Joint Fillers - 20 mm thick, preformed, non-extruding, resilient bituminous type
 - 3.9. Add mixtures - to be used only when approved by engineer
 - 3.10. Aggregates (for base) - 19mm Crusher Run limestone shall be produced by crushing limestone to OPSS 1010.05.03.06 physical requirements
 - 3.11. Water (for mixing and curing) - to be reasonably clean and free of oil, salt, acid, alkali, sugar, organic matter, or other substances injurious to the finished product and shall meet the requirement of CSA A23.1.M
4. Class C-2 exposure concrete mix to provide a compressive strength of 32 Mpa at 28 days, entrained air of 5 to 7 percent and a slump at point of discharge of 60 mm for curbs and footings
5. Granular base to be compacted to 95 percent maximum dry density to ASTM D698-78 and to depths as detailed
6. Pour concrete in favourable weather conditions
7. Apply surface finishes as detailed
8. Provide expansion and contraction joints as detailed
9. Repair defective areas while concrete is still plastic, or remove defective work and replace with new concrete
10. Concrete areas will not be accepted under the following conditions;
 - 10.1. Failure to meet requirements of this specification
 - 10.2. Excessive honeycombing or embedded debris
 - 10.3. Average strength in any area is less than 95 percent of the specified minimum
 - 10.4. Surface irregularities
 - 10.5. Cosmetic and structural damage (e.g., cracks, chipped edges)
 - 10.6. Poor quality workmanship
11. It is the contractor's responsibility to maintain and protect concrete areas until time of final acceptance

Note: All Drawings by Baker Turner inc. to be Printed in Colour.

REVISIONS

DATE	DESCRIPTION
Mar 18, 2024	Issued for Submission
Feb 28, 2024	Issued for Client Review

DATE DESCRIPTION

DATE	DESCRIPTION
Mar 18, 2024	Issued for Submission
Feb 28, 2024	Issued for Client Review

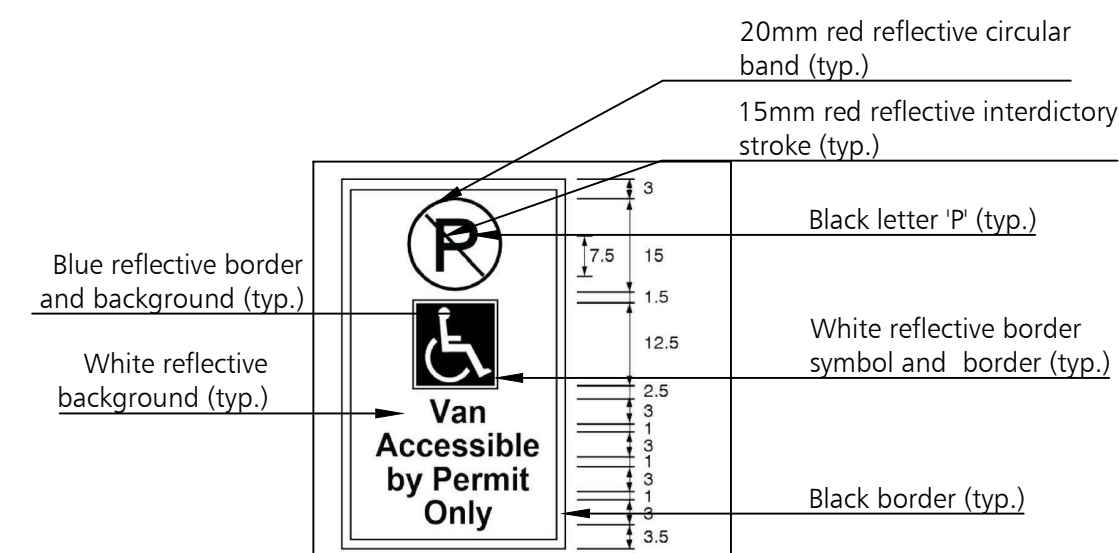
NOTE: Contractor is to check and verify all dimensions and conditions on the project, and is to immediately report any discrepancies to the landscape architect before proceeding with the work.



Landscape Architecture | Site Design
Suite 234
2010 Winston Park Drive
Oakville Ontario L6H 5R7
Tel: (289) 291-7620
email: tba@bakerturner.com

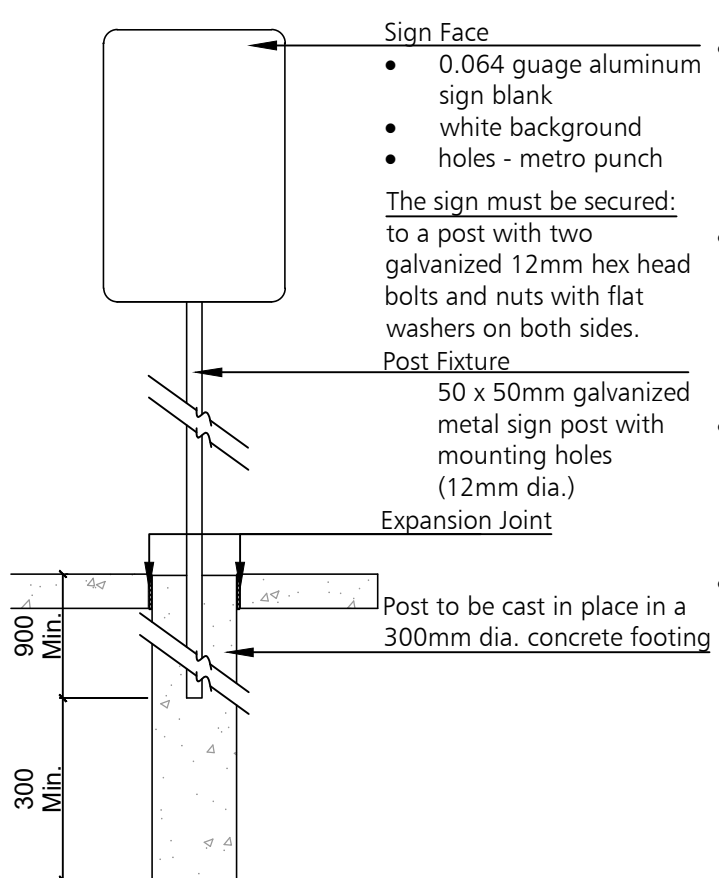
Project Title
Bristol Circle Warehouse
2364 Bristol Circle
Oakville, ON
Details

Date	Issued
May 2023	
Job Number	Drawn By
BTI-1685	DA
Scale	Checked By
As Shown	JW
Sheet Number	File Number
LP.2 of 3	



Signage Requirements:

- All accessible parking stalls shall be designated by one sign per bay
- The required sign must be mounted at least 0.60m and not more than 2.0m from the end of stall. Sign must not obstruct the sidewalk.
- Where an unobstructed building face is located no more than 2.0m from the face of the curb at accessible bay the sign may be mounted on the building face.
- The sign must be secured to a post with two galvanized 12mm hex head bolts and nuts with flat washers on both sides.
- The bottom of the sign must be installed 2.0m above the finished grade.



ACCESSIBLE PARKING SIGNAGE
NTS

7
L.2

PIC-NIC TABLE
NTS

5
L.2

MTB-0210-00027 **200 SERIES**
Legacy #MLPT210-S-RC

MATERIALS: Table frame is made from 3"x 2-3/8" structural I-Beam with mitered corners. Horizontal support beams are used for superior stability and structural integrity. Surface material is recycled plastic - Cedar color.

FINISH: All steel components are protected with E-Coat rust proofing. The Maglin Powdercoat System provides a durable finish on all metal surfaces.

INSTALLATION: The table is delivered pre-assembled. Holes (0.5") are provided for securing to base.

TO SPECIFY: Select MBE-0210-00027
Choose:
- Powdercoat Color

HEIGHT: 29.75" (75.6cm) **LENGTH:** 70" (177.8cm) **WIDTH:** 66.5" (168.9cm) **WEIGHT:** 385.39lbs (174.8kg)

MAGLIN Site Furniture
T 800 716 6508
F 877 260 9393
www.maglin.com
sales@maglin.com

- All drawings, specifications, design and details on this page remain the property of Maglin Site Furniture Inc. and may not be used without Maglin authorization.
- Details and specifications may vary due to continuing improvements of our products.

MBE-0870-00050 **800 SERIES**
Legacy #MLB872B-M-A

MATERIALS: Bench ends are made from solid cast aluminum. The seat employs steel.

FINISH: The Maglin Powdercoat System provides a durable finish on all metal surfaces.

INSTALLATION: The bench is delivered pre-assembled. Holes (0.5") are provided in each foot for securing to base.

TO SPECIFY: Select MBE-0870-00050
Choose:
- Powdercoat Color

HEIGHT: 22.25" (56.5cm) **LENGTH:** 69.5" (176.5cm) **DEPTH:** 17.69" (44.9cm) **WEIGHT:** 66.53lbs (30.2kg)

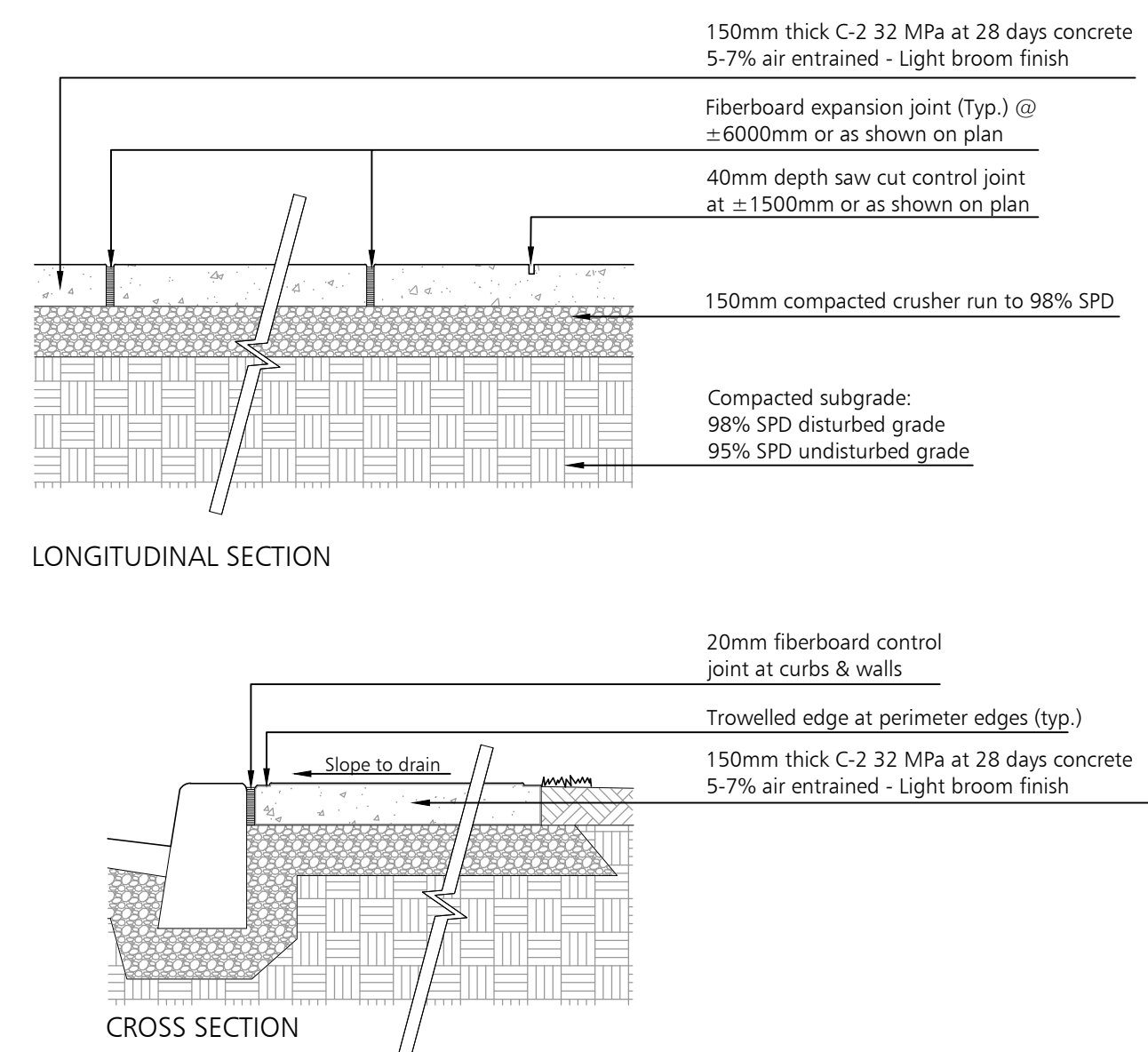
MAGLIN Site Furniture
T 800 716 6508
F 877 260 9393
www.maglin.com
sales@maglin.com

- All drawings, specifications, design and details on this page remain the property of Maglin Site Furniture Inc. and may not be used without Maglin authorization.
- Details and specifications may vary due to continuing improvements of our products.

BENCH
NTS

3
L.2

CONCRETE PAVING AND SPECIFICATIONS
1:20



1
L.2

Planting

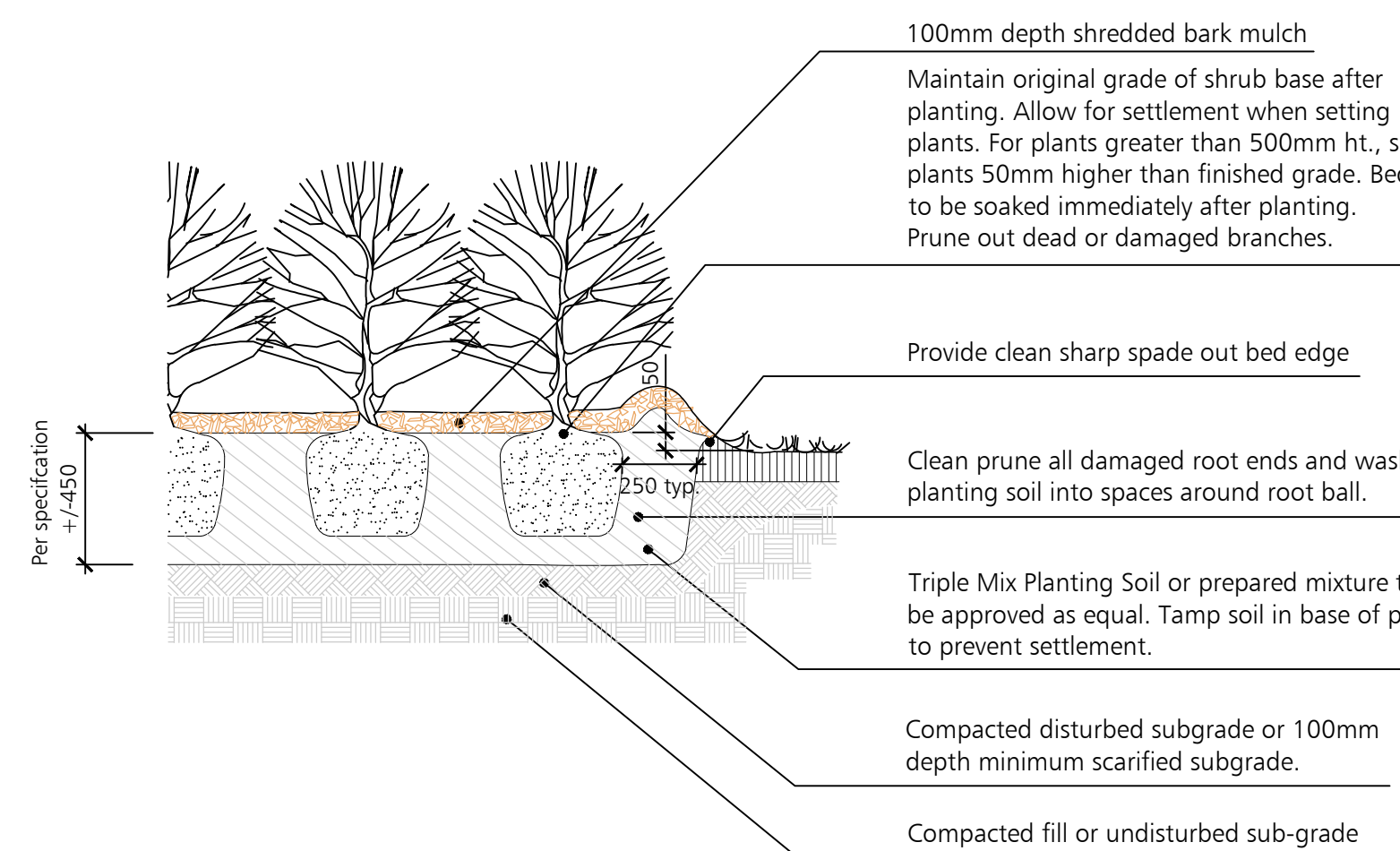
- Coordinate shipping of plants and excavation of holes to ensure minimum time lapse between digging and planting.
- Tie branches of tree and shrubs securely and protect plant material against abrasion, exposure, and extreme temperature during transit. Avoid binding of planting stock with rope or wire which would damage bark, break branches or destroy natural shape of plant. Give full support to root ball of large trees during lifting.
- Cover plant foliage with tarpaulin and protect bare roots by means to prevent loss of moisture during transit and storage.
- Provide two year warranty for plant material as itemized on plant list. At end of warranty inspection, all plant material will be in vigorous growing condition, free of pests and disease and true to natural form.
- During warranty period, remove from site any plant material that has died or failed to grow satisfactorily as determined by owner/architect/landscape architect. Extend warranty on replacement plant material for a period equal to the length of original warranty period. Remove trunk wrapping, tree stakes and guy wired at the end of the warranty period. Upon request, remove trunk wrapping for visual inspection and rewrap.
- Plant material: comply with metric guide - specification for nursery stock, 1984 edition of Canadian Nursery Trades Association referring to size and development of plant material and root ball. Measure plants when branches are in their natural position. Height and spread dimensions refer to main body of plant and not from branch tip to branch tip. Use trees and shrubs of no. 1 grade.
- Stake out all tree locations and planting beds and obtain approval from architect/landscape architect/owner before excavation. The location of trees and planting areas where shown on drawings is approximate only and may require adjustment due to site conditions or as directed by the consultant.
- Plant only under conditions that are conducive to health and physical conditions of plants.
- Provide planting schedule, extending planting operations over a long period. Using limited crew will not be accepted.
- Excavate planting pits and beds to depth indicated on details. Fill with a planting mixture of one part peat moss, six parts topsoil with commercial bonemeal for planting holes in heavy soils if natural drainage does not exist. Have method approved.
- Immediately following any planting operations, remove all debris and excess material from site, leaving the site neat and tidy.
- It is the contractor's responsibility to maintain plant material for 30 days following planting or until time of final acceptance. Maintenance of plant material during warranty period is the owners responsibility.
- Maintenance tasks until time of final acceptance to include all of the following:
 - Watering
 - Fertilizing
 - Weed Control
 - Insect and Fungus Control
 - Pruning
- Submit separate maintenance cost for consideration by owner during warranty period only. Refer to maintenance specifications.

Sodding

- Schedule deliveries in order to keep storage at job site to a minimum without causing delays.
- Sod shall be certified #1 Nursery Grown sod containing 50% merion blue grass and 50% Kentucky blue grass. It shall be no greater than 40mm (1-1/2") in thickness and with accordance with the classification of turf grass sod for the province by the national sod growers association.
- Obtain approval of topsoil grade and depth before starting sodding. Areas to be smooth graded by a landscape grader and hand raked to provide a completely smooth and even surface.
- Lay sod in rows, perpendicular to slope, smooth and even with adjoining areas and with joints staggered. Butt sections closely without overlapping or leaving gaps between sections. Cut out irregular or thin sections with a sharp knife.
- Stake all sod on slopes greater than 1:5 (20%).
- Roll sod immediately after laying to press sod firmly on to the surface soil.
- Water immediately after sod laying to obtain moisture penetration through sod into top 100mm (4") of topsoil. Water by means of a water truck or if approved, by hydrant to obtain a complete drenching. Watering by hand hose and sprinkler is not sufficient. For the first 30 days, soak to this depth at least once a week.
- Water in similar manner thereafter if sufficient rain does not fall, in order to keep the underlying surface moist. Watering until acceptance of the sod is the contractors responsibility.
- Immediately clean up soil or debris spilled onto pavement and dispose of deleterious materials.
- Sodded areas will be accepted and warranty period begins provided that:
 - Sod is completely green
 - Sodded areas have been cut minimum of two times
 - Sod is knit to underlying soil and cannot be lifted when tugged by hand.
- It is the contractors responsibility to maintain sod until time of sod acceptance. Maintenance of sod after acceptance is the responsibility of owner.

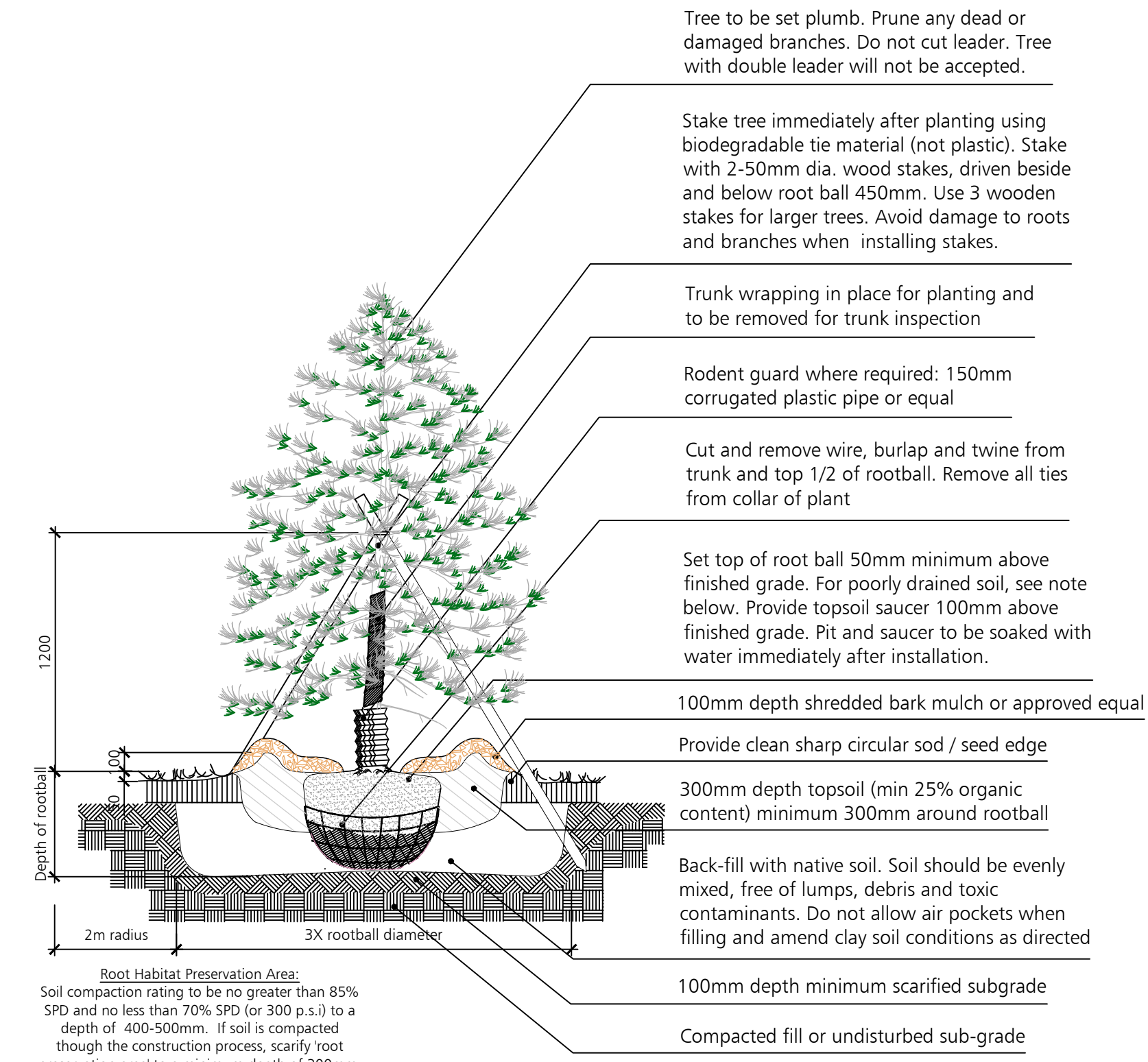
Topsoil Placement & Fine Grading

- Ensure that the approval has been obtained for rough grading prior to proceeding with this section of work.
- Scarify the rough graded areas to provide a loosened surface in order to allow bonding of the topsoil.
- Spread topsoil on the prepared and accepted rough graded surface to a minimum depth of 100 mm firmly packed.
- Keep topsoil 25 mm below finished grade for sodded areas elsewhere bring topsoil up to finished grade of adjacent surfaces.
- The finished surface is to be smooth and even with no ruts, clods or contaminants.
- Remove stones in excess of 10mm for area to be seeded.
- Hand rake areas to be seeded or sodded as a final surface preparation coordinating the work to ensure that seeding or sodding can occur as soon as possible after raking has been completed.

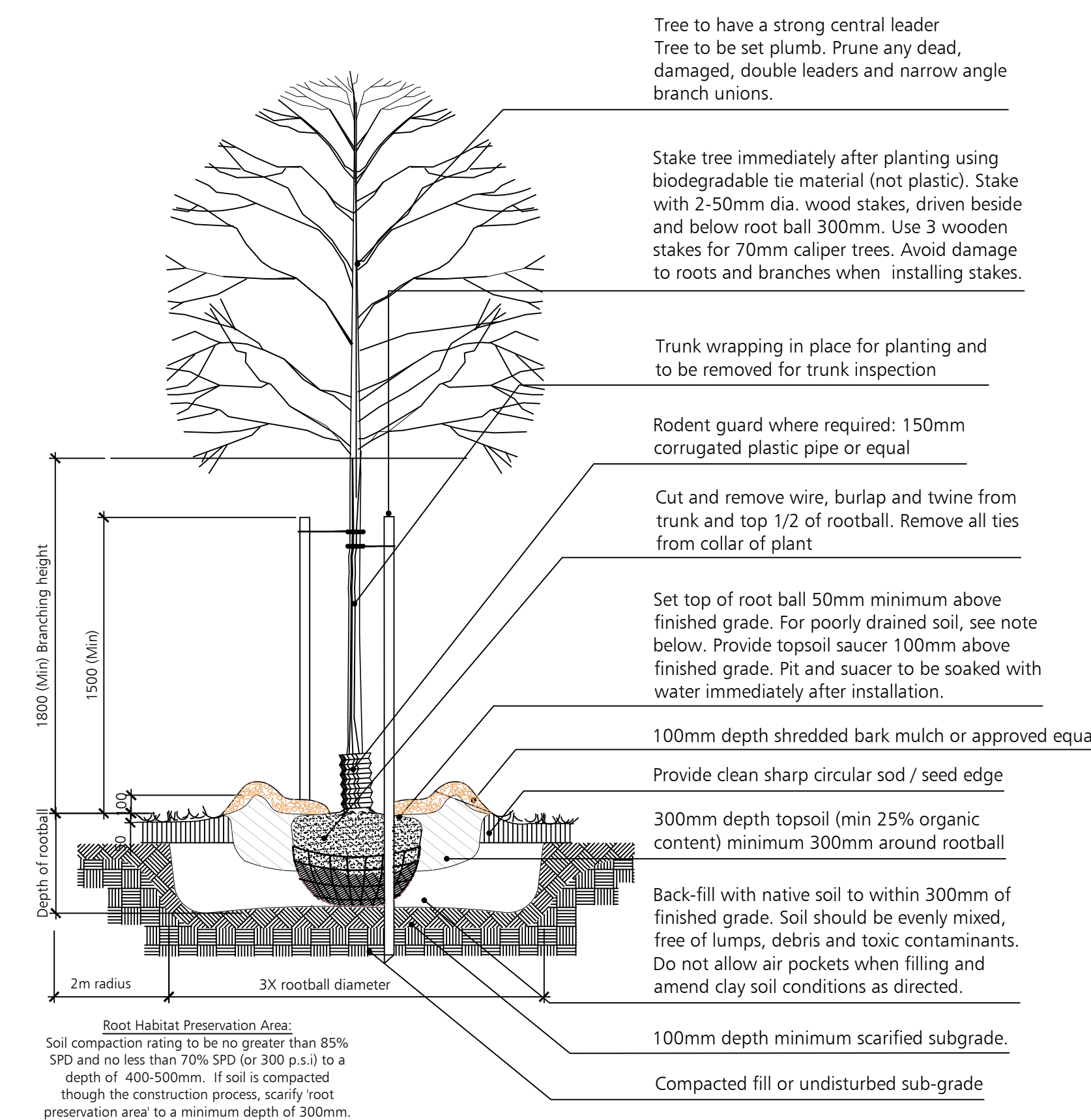


- NOTES:**
- For planting in poorly drained soils install plant material so that root collar is 75-100mm above grade
 - Remove container and maintain soil ball intact. Container to be cut carefully away from root system so as not disturb soil ball.

PLANTING DETAILS AND SPECIFICATIONS



- NOTES:**
- No tree pits shall be left open over night.
 - Sides surfaces of all tree pits to be scarified.
 - For planting in poorly drained soils install plant material so that root collar is 75-100mm above grade
 - Trees to be planted by hand or backhoe. No tree spades or augering permitted.
 - Remove stakes at close of second growing season or upon expiry of warranty period.



- NOTES:**
- No tree pits shall be left open over night.
 - Sides surfaces of all tree pits to be scarified.
 - For planting in poorly drained soils install plant material so that root collar is 75-100mm above grade
 - Trees to be planted by hand or backhoe. No tree spades or augering permitted.
 - Remove stakes at close of second growing season or upon expiry of warranty period.

PLANTING DETAILS

Note: All Drawings by Baker Turner inc. to be Printed in Colour.

REVISIONS	
DATE	DESCRIPTION
Mar 18, 2024	Issued for Submission
Feb 28, 2024	Issued for Client Review

NOTE: Contractor is to check and verify all dimensions and conditions on the project, and is to immediately report any discrepancies to the landscape architect before proceeding with the work.



Landscape Architecture | Site Design
 Suite 234
 2010 Winston Park Drive
 Oakville Ontario L6H 5R7
 Tel: (289) 291-7620
 email: tba@bakerturner.com

Project Title

Bristol Circle Warehouse
 2364 Bristol Circle
 Oakville, ON

Details

Date	Issued
May 2023	
Job Number	Drawn By
BTI-1685	DA
Scale	Checked By
As Shown	JW
Sheet Number	File Number
LP.3 of 3	