

Landscape Master Plan

Scale 1:750

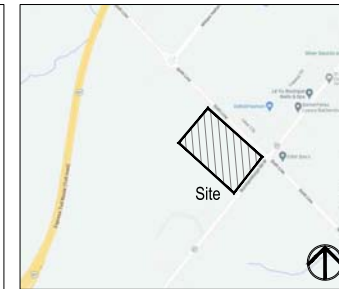
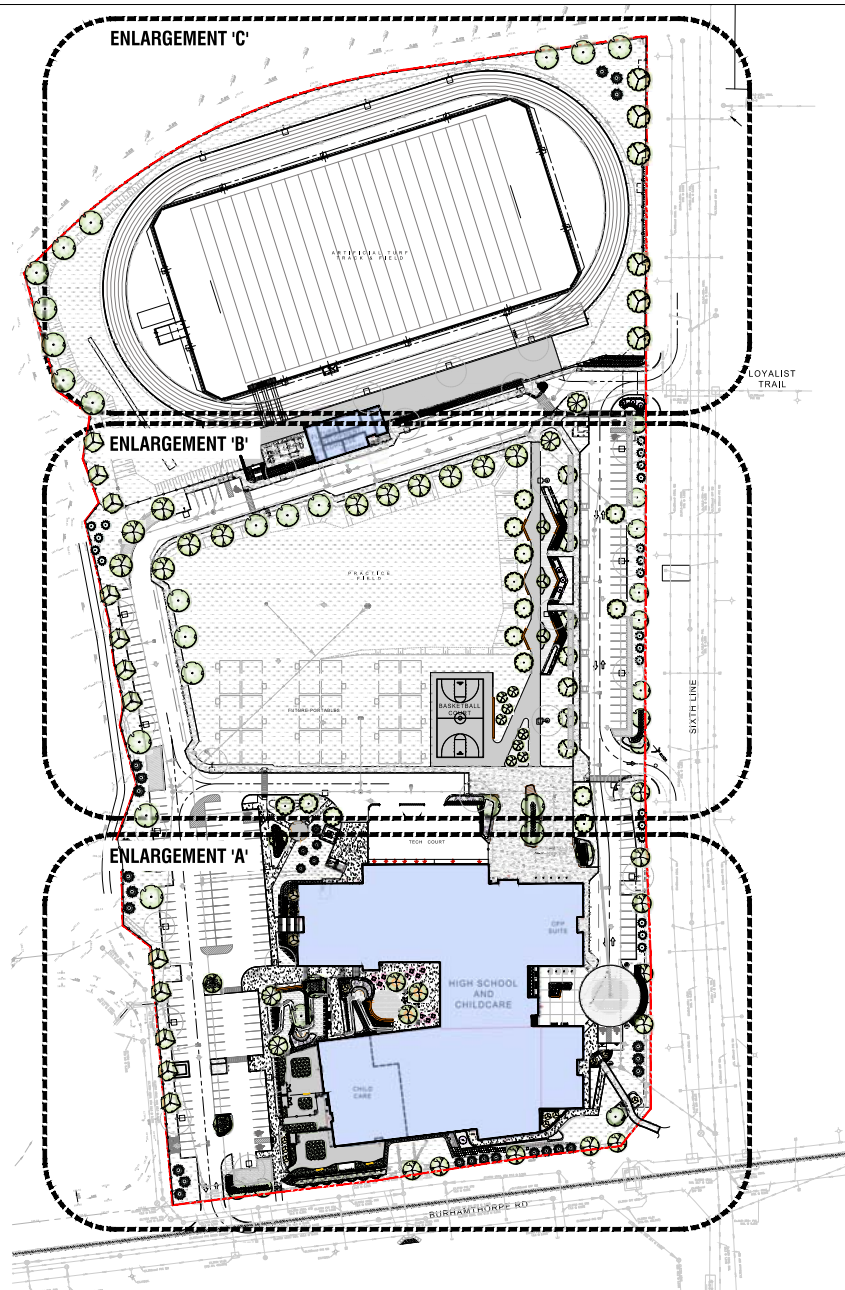
Drawing List

- L1-01 LANDSCAPE MASTER PLAN
- L1-02 LANDSCAPE ENLARGEMENT A
- L1-03 LANDSCAPE ENLARGEMENT B
- L1-04 LANDSCAPE ENLARGEMENT C

- L2-01 PLANTING PLAN A
- L2-02 PLANTING PLAN B
- L2-03 PLANTING PLAN C

- L3-01 TREE CANOPY PLAN A
- L3-02 TREE CANOPY PLAN B

- LD-01 LANDSCAPE DETAILS
- LD-02 LANDSCAPE DETAILS
- LD-03 LANDSCAPE DETAILS
- LD-04 LANDSCAPE DETAILS
- LD-05 LANDSCAPE DETAILS



Key Map

Legend

	Proposed Deciduous Tree		Prop. Subbed Area Typ.
	Proposed Coniferous Tree		Prop. Concrete Paving Typ.
	Property Line		Feature Colour Concrete Paving
	Plant Material Reference Key		Proposed Unit Paving
	Detail Reference Key		Proposed Asphalt
	1.8m HT Wood Privacy Screen Typ.		Proposed Planting Area
	1.2 Ornamental Metal Fence		Synthetic Turf Area
	Area Enlargement		Feature Bench/Seat Walls
	Proposed Curb Typ.		Proposed Bench
	Proposed Armourstone		Proposed Bike Ring
			Light Bollard



MARTON SMITH LANDSCAPE ARCHITECTS
 170 The Donway W. Suite 206
 Toronto, Ontario, Canada, M5C 2G3
 tel. 416.492.9866 | email. info@msla.ca

Architect:
Snyder
 Snyder Architects Inc.
 280 King St. E. Ste A101, Toronto, ON M5A 4L5
 T. 416.966.5444 F. 416.966.4443
 www.snyderarchitects.ca

Client/Owner:



Notes:

No.	Revision	Date
07	Issued for ReSubmission	18/01/24
06	Issued for Coordination	21/11/23
05	Issued for SPA Submission	15/05/23
04	Issued for Coordination	12/05/23
03	Issued for Coordination	08/05/23
02	Issued for Coordination	24/02/23
01	Issued for Review	20/01/23

North:

Stamp:

Project:
Proposed High School & Childcare
 103 Burnhamthorpe Road
 Oakville, Ontario

Scale: 1:750 Date: Jan 2023
 Drawn By: S.L. Checked By: L.M.

Drawing Title:
Landscape Master Plan

Project No. 23102 Sheet No. L1-01

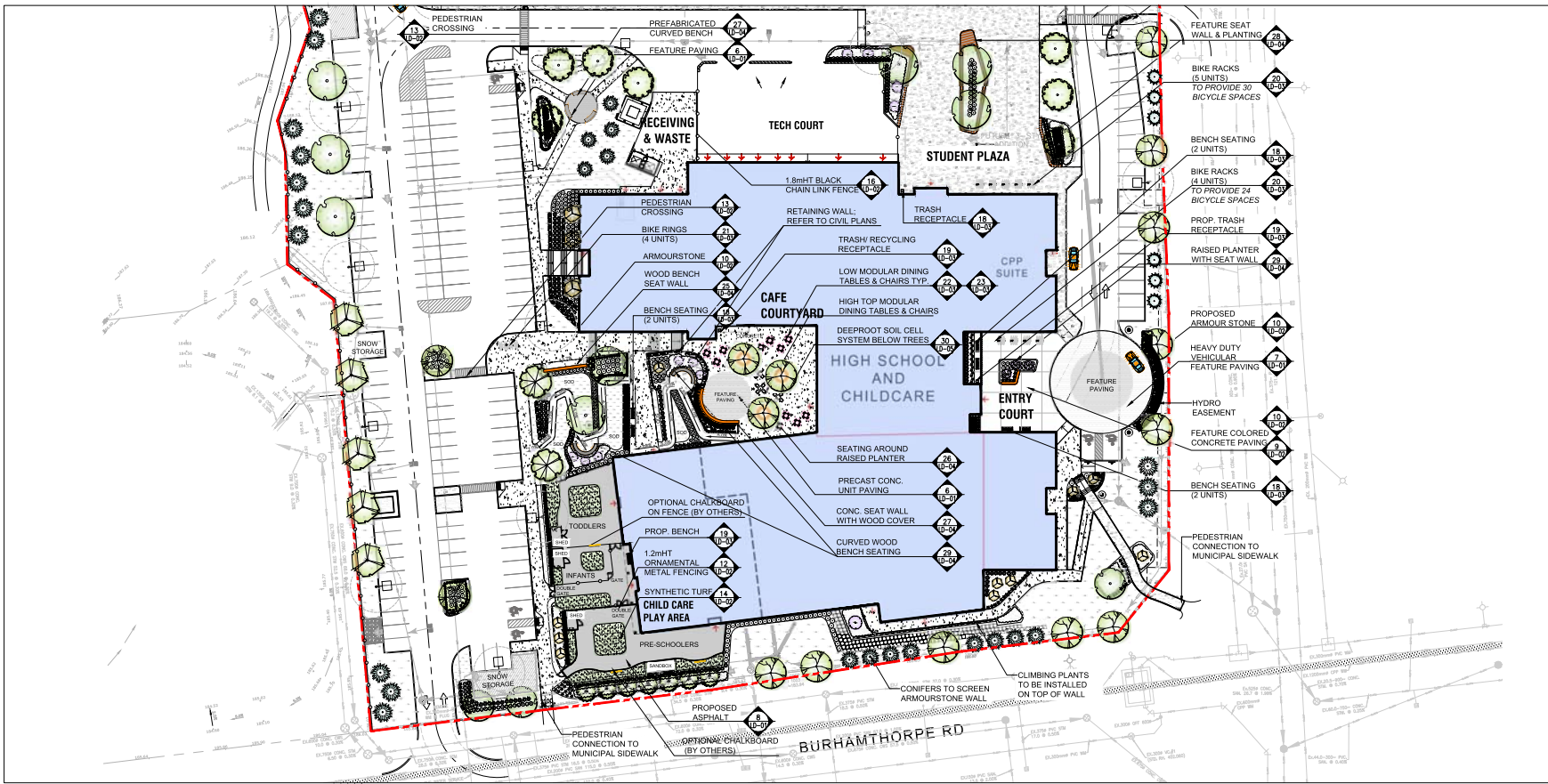
All information on this drawing was obtained from the information provided by the client. The client is responsible for the accuracy of the information provided. The design is based on the information provided and is not a guarantee of performance. The design is subject to change without notice. The design is not to be used for construction without the approval of the design professional. The design professional is not responsible for the construction of the project. The design professional is not responsible for the construction of the project. The design professional is not responsible for the construction of the project.

Legend

	Proposed Deciduous Tree		Prop. Sodded Area Typ.		Feature Bench/Seat Walls
	Proposed Coniferous Tree		Prop. Concrete Paving Typ.		Proposed Bench
	Property Line		Feature Colour Concrete Paving		Proposed Bike Ring
	Plant Material Reference Key		Proposed Unit Paving		Light Bollard
	Detail Reference Key		Proposed Asphalt		Proposed Curb Typ.
	Prop. 1.8m HT Wood Privacy Screen Typ.		Proposed Planting Area		Proposed Armourstone
	Prop. 1.2 Ornametal Metal Fence		Synthetic Turf Area		

Client/Owner:

Notes:



No.	Revision	Date
07	Issued for ReSubmission	18/01/24
05	Issued for SPA Submission	21/11/23
04	Issued for Coordination	15/05/23
03	Issued for Coordination	05/05/23
02	Issued for Coordination	24/02/23
01	Issued for Review	20/01/23

North:

Stamp:

Project:
Proposed High School & Childcare
 103 Burnhamthorpe Road
 Oakville, Ontario

Scale: **1:400** Date: **Jan 2023**
 Drawn By: **S.L.** Checked By: **L.M.**

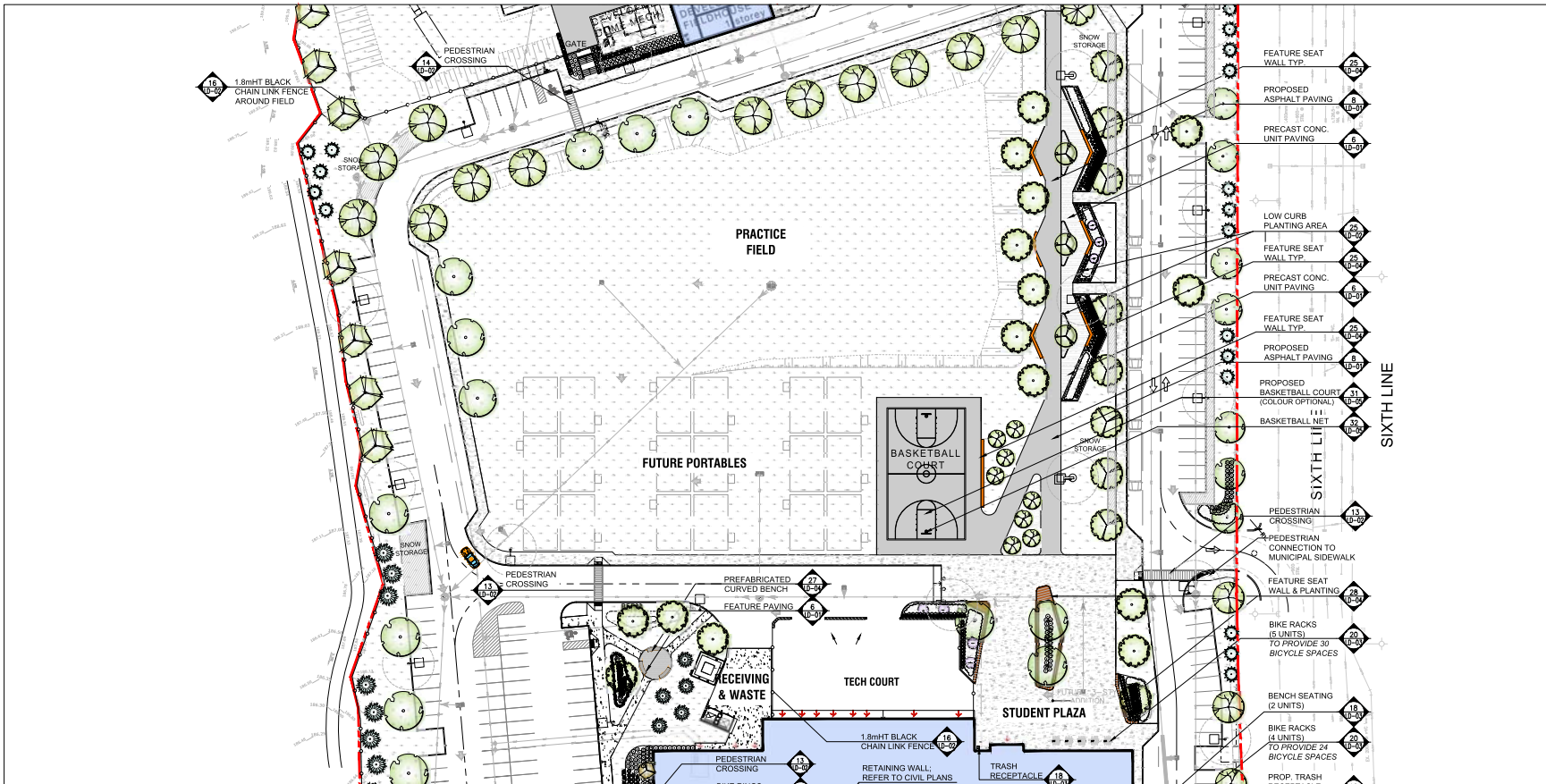
Drawing Title:
Layout Enlargement 'A'

Project No. **23102** Sheet No. **L1-02**

MSLA and Snyder Architects Inc. are registered Professional Engineers under the Engineering Act, R.S.O. 1990, Chapter E.1. The Professional Engineers Council of Ontario (PECO) has approved the seal of Snyder Architects Inc. as a Professional Engineer. This drawing is the property of Snyder Architects Inc. and is not to be reproduced, stored in a retrieval system, or transmitted in any form or by any means, electronic, mechanical, photocopying, recording, or by any information storage and retrieval system, without the prior written permission of Snyder Architects Inc. The client/owner is responsible for ensuring that the design meets all applicable codes and standards. Snyder Architects Inc. is not responsible for any errors or omissions in this drawing. The client/owner is responsible for obtaining all necessary permits and approvals from the relevant authorities. The client/owner is responsible for ensuring that the design is suitable for the intended use and that it complies with all applicable laws and regulations. Snyder Architects Inc. is not responsible for any damage or injury resulting from the use of this drawing. The client/owner is responsible for ensuring that the design is suitable for the intended use and that it complies with all applicable laws and regulations. Snyder Architects Inc. is not responsible for any damage or injury resulting from the use of this drawing.

Legend

	Proposed Deciduous Tree		Prop. Sodded Area Typ.		Feature Bench/Seat Walls
	Proposed Coniferous Tree		Prop. Concrete Paving Typ.		Proposed Bench
	Property Line		Feature Colour Concrete Paving		Proposed Bike Ring
	Plant Material Reference Key		Proposed Unit Paving		Light Bollard
	Detail Reference Key		Proposed Asphalt		Proposed Curb Typ.
	Prop. 1.8m HT Wood Privacy Screen Typ.		Proposed Planting Area		Proposed Armourstone
	Prop. 1.2 Ornamental Metal Fence		Synthetic Turf Area		



07	Issued for ReSubmission	19/01/24
05	Issued for SPA Submission	15/05/23
04	Issued for Coordination	11/05/23
03	Issued for Coordination	05/05/22
02	Issued for Coordination	24/02/23
01	Issued for Review	20/01/23

No. Revision Date

North:

Stamp:

Project:
Proposed High School & Childcare
 103 Burnhamthorpe Road
 Oakville, Ontario

Scale: 1:400 Date: Jan 2023
 Drawn By: S.L. Checked By: L.M.

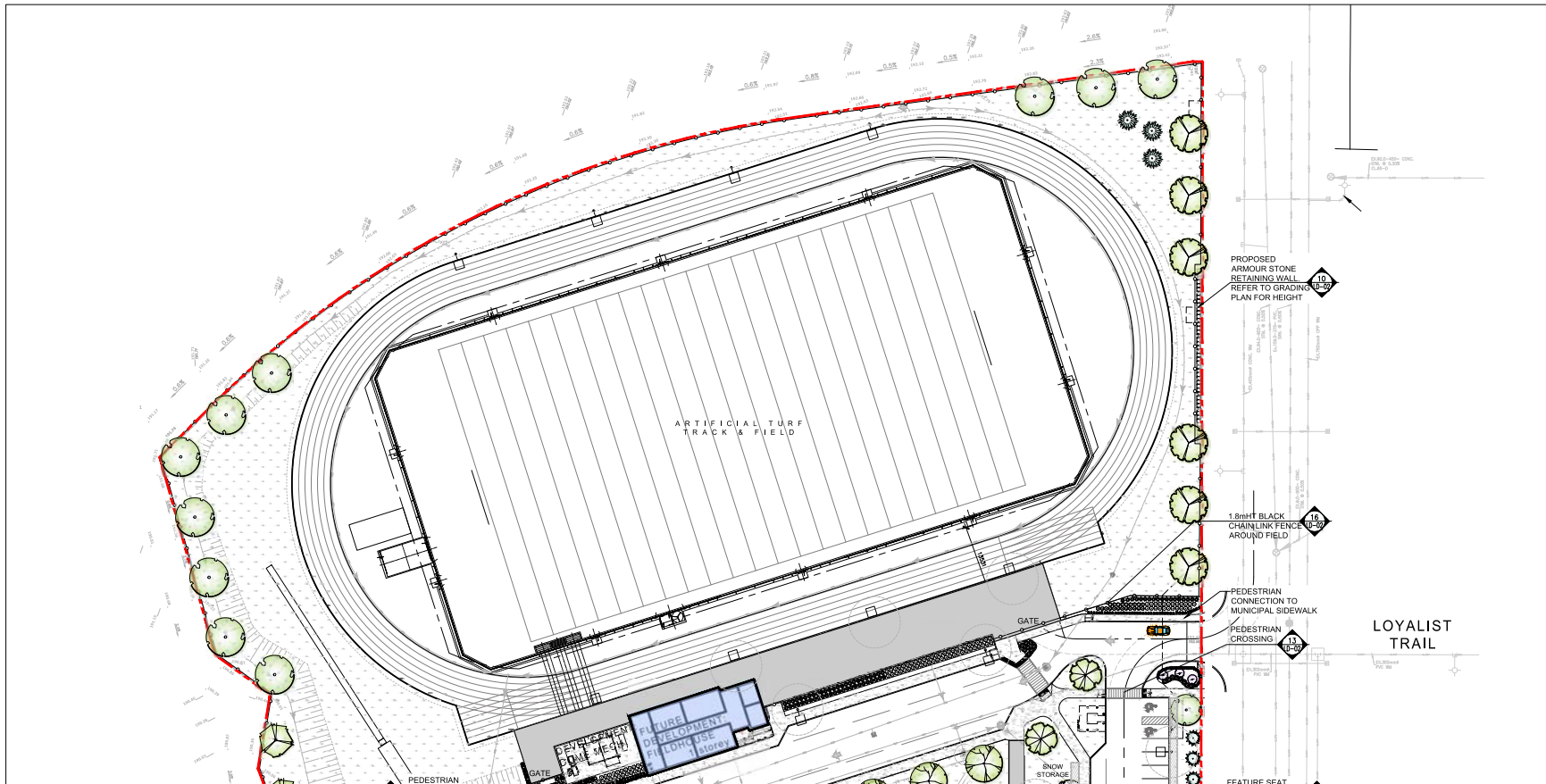
Drawing Title:
Layout Enlargement 'B'

Project No. Sheet No.
23102 L1-03

THIS DRAWING AND ALL DOCUMENTS HEREBY REFERRED TO ARE THE PROPERTY OF SNYDER ARCHITECTS INC. AND SHALL REMAIN THE PROPERTY OF SNYDER ARCHITECTS INC. ANY REPRODUCTION OR DISTRIBUTION OF THIS DRAWING WITHOUT THE WRITTEN PERMISSION OF SNYDER ARCHITECTS INC. IS STRICTLY PROHIBITED. SNYDER ARCHITECTS INC. IS NOT RESPONSIBLE FOR ANY ERRORS OR OMISSIONS IN THIS DRAWING. THE USER OF THIS DRAWING SHALL BE RESPONSIBLE FOR OBTAINING ALL NECESSARY PERMITS AND APPROVALS FROM THE APPROPRIATE AUTHORITIES. THE USER OF THIS DRAWING SHALL BE RESPONSIBLE FOR OBTAINING ALL NECESSARY PERMITS AND APPROVALS FROM THE APPROPRIATE AUTHORITIES. THE USER OF THIS DRAWING SHALL BE RESPONSIBLE FOR OBTAINING ALL NECESSARY PERMITS AND APPROVALS FROM THE APPROPRIATE AUTHORITIES.

Legend

- Proposed Deciduous Tree
- Proposed Coniferous Tree
- Property Line
- Plant Material Reference Key
- Detail Reference Key
- Prop. 1.8m HT Wood Privacy Screen Typ.
- Prop. 1.2 Ornamental Metal Fence
- Prop. Sodded Area Typ.
- Prop. Concrete Paving Typ.
- Feature Colour Concrete Paving
- Proposed Unit Paving
- Proposed Asphalt
- Proposed Planting Area
- Synthetic Turf Area
- Feature Bench/ Seat Walls
- Proposed Bench
- Proposed Bike Ring
- Light Bollard
- Proposed Curb Typ.
- Proposed Armourstone



Municipality: **OAKVILLE**

Notes:

No.	Revision	Date
07	Issued for ReSubmission	18/01/24
06	Issued for Coordination	21/11/23
05	Issued for SPA Submission	15/05/23
04	Issued for Coordination	11/05/23
03	Issued for Coordination	05/05/23
02	Issued for Coordination	24/02/23
01	Issued for Review	20/01/23

North: Stamp:

Project:
Proposed High School & Childcare
 103 Burnhamthorpe Road
 Oakville, Ontario

Scale: 1:400 Date: Jan 2023

Drawn By: S.L. Checked By: L.M.

Drawing Title:
Layout Enlargement 'C'

Project No. 23102 Sheet No. L1-04

All information on this drawing was obtained from the information provided by the client. The client is responsible for the accuracy of the information provided. The designer is not responsible for the accuracy of the information provided. The designer is not responsible for the accuracy of the information provided. The designer is not responsible for the accuracy of the information provided.

Legend

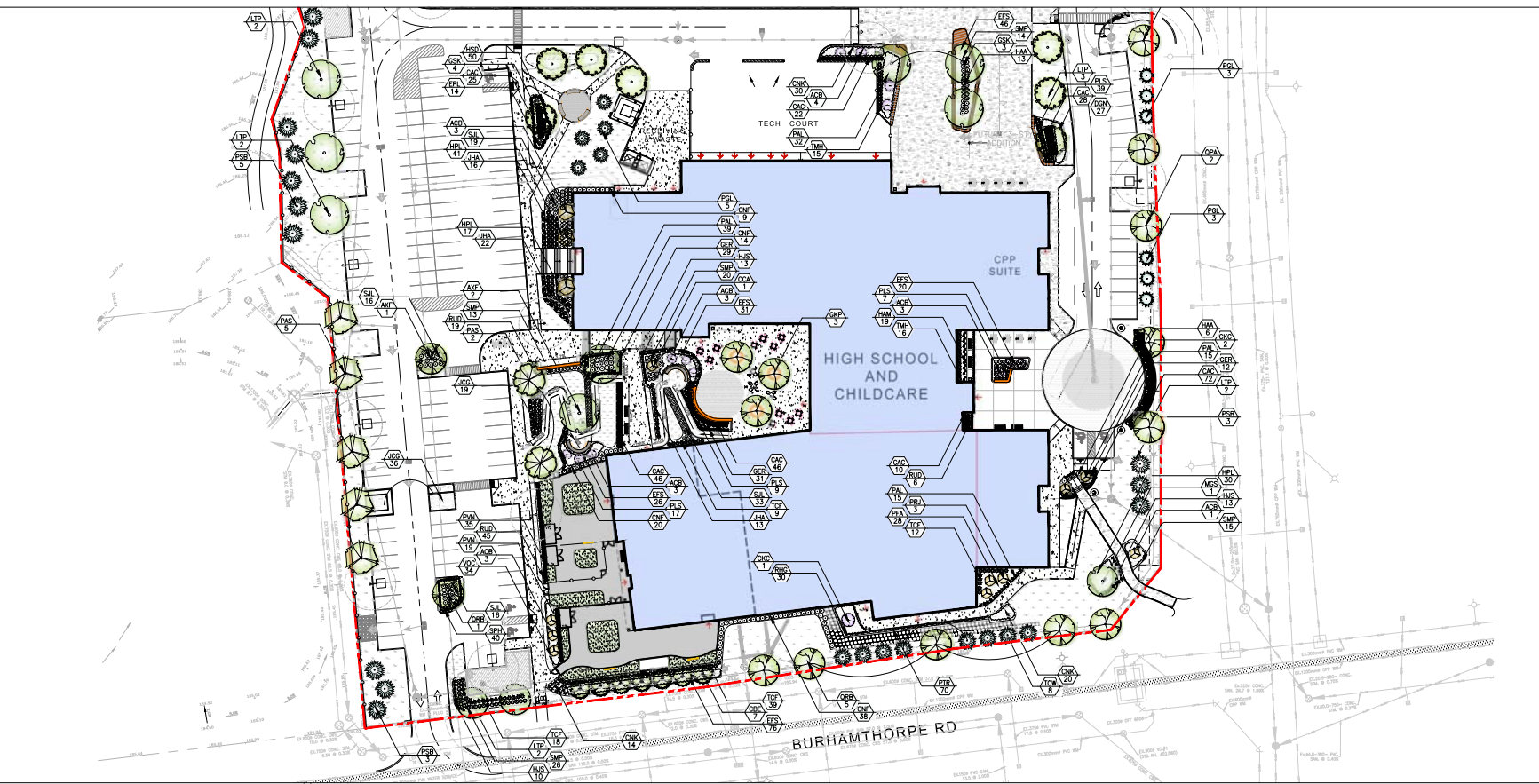
- Proposed Deciduous Tree
- Prop. Sodded Area Typ.
- Prop. Concrete Paving Typ.
- Feature Colour Concrete Paving
- Proposed Unit Paving
- Proposed Asphalt
- Proposed Planting Area
- Synthetic Turf Area
- Light Bollard
- Proposed Curb Typ.
- Prop. Bike Ring
- Prop. 1.8m HT Wood Privacy Screen Typ.
- Prop. 1.2 Ornamental Metal Fence
- Feature Bench/ Seat Walls
- Proposed Bench

Proposed Plant Material List

KEY	QTY	BOTANICAL NAME	COMMON NAME	HT/CAL	SPREAD	ROOT	PROPAGATION	NATIVE	REMARKS
DECIDUOUS TREES - LARGE CANOPY									
AWJ	8	<i>Acer rubrum</i>	Red Maple	70 mm	B.B.H.	High	Yes	Full Form	
ASC	12	<i>Acer saccharum</i>	Sugar Maple	70 mm	B.B.H.	High	Yes	Full Form	
CHD	12	<i>Crataegus mollis</i>	Strawberry Hedge	70 mm	B.B.H.	High	Yes	Full Form	
LTP	18	<i>Liriodendron tulipifera</i>	Tulip Tree	70 mm crown	B.B.H.	High	Yes	Full Form	
PKS	16	<i>Parrotia persicifolia</i>	Amuristan Syringa	70 mm	B.B.H.	High	Yes	Full Form	
QSL	8	<i>Quercus laevis</i>	Pin Oak	70 mm	B.B.H.	High	Yes	Full Form	
QB	20	<i>Quercus rubra</i>	Red Oak	70 mm	B.B.H.	High	Yes	Full Form	
DECIDUOUS TREES - MEDIUM CANOPY									
MS	2	<i>Malus x baccata 'Safeway'</i>	Inflected Malus Bush	70 mm	B.B.H.	High	Yes	Full Form	
GK	9	<i>Gleditsia triacanthos 'Sage'</i>	Sage Honey-Locust	70 mm	B.B.H.	High	Yes	Full Form	
DECIDUOUS TREES - SMALL CANOPY									
BA	1	<i>Betula incana (multi-stem)</i>	White Birch - 3 Stem	70 mm	B.B.H.	High	Yes	Specimen	
CE	7	<i>Corylus heterophylla 'Yankee'</i>	Yonkers European Hazelnut	70 mm	B.B.H.	High	Yes	Full Form	
GP	3	<i>Staphylea trifolia 'Sentry'</i>	Flowering Sentry Magnolia Tree	70 mm	B.B.H.	High	Yes	Full Form	
MG	3	<i>Magnolia acuminata</i>	Star Magnolia	200 cm	purple	B.B.H.	High	Full Form	
PS	6	<i>Prunus serotina 'Pennington'</i>	Common Flowering Cherry	45 cm	B.B.H.	High	Yes	Full Form (Chokras)	
CONIFERUS TREES									
TOW	8	<i>Taxus occidentalis</i>	White Cedar	100 cm	B.B.H.	High	Yes	Full Form	
PS	28	<i>Pinus strobus</i>	White Pine	200 cm	B.B.H.	High	Yes	Full Form	
PSB	17	<i>Pinus strobus</i>	White Pine	200 cm	B.B.H.	High	Yes	Full Form	
CONIFERUS SHRUBS									
YD	12	<i>Yucca angustifolia 'Yankee'</i>	Yucca Tree	45 cm	C.C.	High	Yes	Full Form	
TH	31	<i>Thuja media 'Mill'</i>	Mill's Tree	70 cm	C.C.	High	Yes	Full Form	
JG	61	<i>Juniperus chinensis 'Gold Coast'</i>	Gold Coast Juniper	70 cm	C.C.	High	Yes	Full Form	
JA	51	<i>Juniperus horizontalis 'Plumosa Compacta'</i>	Compact Plume Juniper	50 cm	C.C.	High	Yes	Full Form	
GRASSES									
GC	248	<i>Calamagrostis canadensis 'Yankee'</i>	Yankee Feather Reed Grass		5 Gal.	High	Yes	Full Form	
FR	148	<i>Festuca virginica 'Yankee'</i>	Yankee's Blush Grass		2 Gal.	High	Yes	Full Form	
PA	128	<i>Panicum alternatum 'Yankee'</i>	Yankee Dwarf Fountain Grass		2 Gal.	High	Yes	Full Form	
FG	31	<i>Festuca ovina glauca</i>	Blue Fescue Ornamental Grass		2 Gal.	High	Yes	Full Form	
SP	40	<i>Sporobolus heterostachyus</i>	Yankee Drooping		2 Gal.	High	Yes	Full Form	

KEY	QTY	BOTANICAL NAME	COMMON NAME	HT/CAL	SPREAD	ROOT	PROPAGATION	NATIVE	REMARKS
DECIDUOUS SHRUBS - SPECIMEN									
AB	22	<i>Abutilon canadense 'Rubrum'</i>	Belgian Baby Face	200 cm		B.B.H.	High	Yes	Full Form
OC	6	<i>Onosmodium albidum</i>	Onion Flowering Dogwood	100 cm		B.B.H.	High	Yes	Full Form
CA	1	<i>Camellia japonica 'Muller's Queen'</i>	Queen Red Bud	180 cm	pink/Red	B.B.H.	High	Yes	Full Form
DECIDUOUS SHRUBS									
SP	180	<i>Spiraea alba 'Yankee'</i>	White Spirea	60 cm	60 cm	C.C.	High	No	Full Form
CM	107	<i>Coma arvensis 'Yankee'</i>	Queen Red Flower Dogwood	60 cm	1.0 Gal.	C.C.	High	Yes	Full Form
CF	83	<i>Coreopsis verticillata 'Yankee'</i>	Yankee Flower Dogwood	60 cm	C.C.	High	Yes	Full Form	
DM	27	<i>Desmodium illinoense 'Yankee'</i>	Dwarf Shiner White Dogwood	35 cm	C.C.	High	Yes	Full Form	
HM	28	<i>Hymenocallis aurea 'Yankee'</i>	Amur Lily	60 cm	C.C.	High	No	Full Form	
HL	111	<i>Hydrangea paniculata 'Little Lime'</i>	Little Lime Hydrangea	60 cm	1.5 gal.	High	No	Full Form	
PK	46	<i>Philadelphus hybridus 'Yankee'</i>	Amur Lily	60 cm	C.C.	High	Yes	Full Form	
PD	120	<i>Physocarpus opulifolius 'Yankee'</i>	Dwarf Dogwood	60 cm	C.C.	High	Yes	Full Form	
DC	24	<i>Desmodium illinoense 'Yankee'</i>	Dwarf Dogwood	60 cm	C.C.	High	No	Full Form	
BS	70	<i>Buxus sempervirens 'Yankee'</i>	Yankee Boxwood	60 cm	C.C.	High	Yes	Full Form	
SP	60	<i>Spiraea japonica 'Yankee'</i>	Yankee Spirea	60 cm	C.C.	High	No	Full Form	
SL	84	<i>Salix speciosa 'Yankee'</i>	Yankee Red Willow	60 cm	C.C.	High	No	Full Form	
SP	96	<i>Spiraea japonica 'Yankee'</i>	Yankee Spirea	60 cm	C.C.	High	No	Full Form	
PERENNIALS									
EX	14	<i>Eximius japonicus 'Yankee'</i>	Dwarf Dogwood		2 Gal.	High	Yes	Full Form	
EP	14	<i>Euphorbia japonica 'Yankee'</i>	Yankee Joe Pye Weed		2 Gal.	High	Yes	Full Form	
GR	140	<i>Geranium 'Yankee'</i>	Yankee Geranium		2 Gal.	High	No	Full Form (PPH White)	
NS	40	<i>Nerine japonica 'Yankee'</i>	Yankee's Star		1 Gal.	High	No	Full Form	
PL	40	<i>Perovskia atrorubra 'Yankee'</i>	Yankee's Star		1 Gal.	High	No	Full Form	
PL	152	<i>Perovskia atrorubra 'Yankee'</i>	Yankee's Star		1 Gal.	High	No	Full Form	
PR	70	<i>Prunella japonica 'Yankee'</i>	Yankee's Star		1 Gal.	High	Yes	Full Form	
SD	70	<i>Sedum spectabile 'Yankee'</i>	Yankee's Star		2 Gal.	High	Yes	Full Form (PPH White)	
SW	18	<i>Sedum spectabile 'Yankee'</i>	Yankee's Star		2 Gal.	High	Yes	Large Leaf	

NOTE: ALL QUANTITIES IN THE LIST OF PLANT MATERIALS ARE TO BE CHECKED BY THE LANDSCAPE CONTRACTOR. ANY DISCREPANCIES ARE TO BE REPORTED TO THE LANDSCAPE ARCHITECT. THE QUANTITIES INDICATED ON THE DRAWING SUPERSEDE THE TOTAL QUANTITIES.



msla
 MARTON SMITH LANDSCAPE ARCHITECTS
 170 The Donway W Suite 206
 Toronto, Ontario, Canada, M5C 2G3
 Tel: 416.492.3986 | Email: info@msla.ca

Architect:
Snyder
 Snyder Architects Inc.
 280 King St. E, Ste A101, Toronto, ON M5A 4L5
 T: 416.966.5444 F: 416.966.4443
 www.snyderarchitects.ca

Client/Owner:
 Municipality:
 Notes:

07 Issued for Resubmission 18/01/24
 06 Issued for Coordination 21/12/23
 05 Issued for SPA Submission 15/05/23
 04 Issued for Coordination 15/05/23
 03 Issued for Coordination 05/05/22
 02 Issued for Coordination 24/02/23
 01 Issued for Review 20/01/23

No. Revision Date

North: Stamp:

Project:
Proposed High School & Childcare
 103 Burnhamthorpe Road
 Oakville, Ontario

Scale: 1:400 Date: Jan 2023
 Drawn By: S.L. Checked By: L.M.
 Drawing Title:
Planting Enlargement 'A'

Project No. Sheet No.
23102 L2-01

KEY	QTY	BOTANICAL NAME	COMMON NAME	HGT/CL	SPREAD	ROOT	DRIP/ZONE	NATIVE	REMARKS
DECIDUOUS TREES - LARGE CANOPY									
AKF	8	<i>Acer rubrum</i>	Red Maple	70 mm	B.B.L.	High	Yes	Full Form	
ASC	12	<i>Acer saccharum</i>	Sugar Maple	70 mm	B.B.L.	High	Yes	Full Form	
CAO	10	<i>Corylus americana</i>	Shagbark Hickory	70 mm	B.B.L.	High	Yes	Full Form	
LTI	18	<i>Liquidambar styraciflua</i>	Lily Tree	70 mm	even	B.B.L.	High	Yes	Full Form
PLS	18	<i>Platanus occidentalis</i>	American Sycamore	70 mm	B.B.L.	High	Yes	Full Form	
OPA	9	<i>Quercus pedunculata</i>	Pin Oak	70 mm	B.B.L.	High	Yes	Full Form	
DRD	20	<i>Quercus rubra</i>	Red Oak	70 mm	B.B.L.	High	Yes	Full Form	
DECIDUOUS TREES - MEDIUM CANOPY									
AKF	2	<i>Acer x freemanii 'Jefferson'</i>	Jefferson Freeman Maple	70 mm	B.B.L.	High	Yes	Full Form	
OSK	9	<i>Quercus macrocarpa 'Hayden'</i>	Hayden Honey-Locust	70 mm	B.B.L.	High	Yes	Full Form	
DECIDUOUS TREES - SMALL CANOPY									
BAH	8	<i>Betula jacquemontii (small-stem)</i>	Hudsonian White Birch - 3 Stem	70 mm	B.B.L.	High	Yes	Specimen	
ORE	7	<i>Corylus latiloba 'Fraxipar'</i>	Pyramidal European Hornbeam	70 mm	B.B.L.	High	Yes	Full Form	
OSF	3	<i>Osage indica 'Stouffer Sunray'</i>	Hudsonian Sunray Osage	70 mm	B.B.L.	High	Yes	Full Form	
MSS	1	<i>Magnolia soulangiana</i>	Saucer Magnolia	200 mm	purple	B.B.L.	High	Yes	Full Form
PRJ	6	<i>Prunus serrulata 'Amanogawa'</i>	Japanese Flowering Cherry	45 mm	M.G.	High	Yes	Full Form (Columnar)	
CONIFEROUS TREES									
TW	8	<i>Taxus occidentalis</i>	White Cedar	100 cm	B.B.L.	High	Yes	Full Form	
PGL	26	<i>Pinus strobus</i>	White Spruce	200 cm	B.B.L.	High	Yes	Full Form	
PSB	17	<i>Pinus strobus</i>	White Pine	200 cm	B.B.L.	High	Yes	Full Form	
CONIFEROUS SHRUBS									
TSP	174	<i>Taxus canadensis 'Tobin'</i>	Fabius Tree	45 cm	C.G.	High	Yes	Full Form	
TMH	31	<i>Taxus media 'Mill'</i>	Mill's Tree	70 cm	C.G.	High	No	Full Form	
CCJ	41	<i>Juniperus chinensis 'Gold Coast'</i>	Gold Coast Juniper	70 cm	C.G.	High	Yes	Full Form	
JAA	51	<i>Juniperus horizontalis 'Plumosa Compacta'</i>	Compact Anderson Juniper	50 cm	C.G.	High	Yes	Full Form	
GRASSES									
CCZ	248	<i>Calamagrostis canadensis 'Mill Prairie'</i>	Mill Prairies Feather Reed Grass		5 Gd.	High	Yes	Full Form	
PAH	146	<i>Panicum virgatum 'Horshoe'</i>	Horshoe Switch Grass		2 Gd.	High	No	Full Form	
PAI	128	<i>Panicum oligosperum 'Nansen'</i>	Nansen Dwarf Fountain Grass		2 Gd.	High	No	Full Form	
POD	31	<i>Poa annua 'Blue Heaven Ornamental Grass'</i>	Blue Heaven Ornamental Grass		2 Gd.	High	Yes	Full Form	
SPH	40	<i>Sporobolus heterostachyus</i>	Pala Dogpound		2 Gd.	High	Yes	Full Form	

KEY	QTY	BOTANICAL NAME	COMMON NAME	HGT/CL	SPREAD	ROOT	DRIP/ZONE	NATIVE	REMARKS
DECIDUOUS SHRUBS - SPECIMEN									
NSB	22	<i>Betula pendula 'Robinet'</i>	Robinet Weeping Birch	200 cm	B.B.L.	High	Yes	Full Form	
OCG	41	<i>Cornus alternifolia</i>	Alternate Flowering Dogwood	120 cm	B.B.L.	High	No	Full Form	
OCB	1	<i>Cornus canadensis 'Maiden'</i>	Eastern Red Dog	180 cm	pink/frag	B.B.L.	High	Full Form	
DECIDUOUS SHRUBS									
EPS	100	<i>Euonymus alatus 'Serratus'</i>	Serrate Euonymus	40 cm	C.G.	High	No	Full Form	
OKK	127	<i>Cornus sericea 'Yale'</i>	Kelley Red Cedar Dogwood	40 cm	C.G.	High	Yes	Full Form	
OWF	83	<i>Cornus sericea 'Yale'</i>	AKC Pink Dogwood	40 cm	C.G.	High	Yes	Full Form	
OSK	27	<i>Quercus macrocarpa 'Hayden'</i>	Dwarf Hayden White Oak	30 cm	C.G.	High	No	Full Form	
HW	39	<i>Hydrangea arborescens 'Vanada'</i>	Arborescent Hydrangea	40 cm	C.G.	High	No	Full Form	
HL	111	<i>Hydrangea paniculata 'Little Limb'</i>	Little Limb Hydrangea	40 cm	5 yd.	High	No	Full Form	
PKA	40	<i>Asplenium platyneuron 'Woodhouse'</i>	Asplenium White Vase	40 cm	C.G.	High	Yes	Full Form	
POC	120	<i>Physocarpus opulifolius 'Dora Gold'</i>	Dora's Gold Noisette	40 cm	C.G.	High	Yes	Dwarf	
WOC	34	<i>Wibornia palustris 'Compacta'</i>	Dwarf European Oxberry	40 cm	C.G.	High	No	Full Form	
ROD	30	<i>Rhus glabra 'New Leaf'</i>	New Leaf Fragrant Sumac	40 cm	C.G.	High	Yes	Full Form	
SPF	40	<i>Spiraea japonica 'Goldflame'</i>	Goldflame Spirea	40 cm	C.G.	High	No	Full Form	
SL	84	<i>Spiraea japonica 'Little Princess'</i>	Dwarf Red Spirea	40 cm	C.G.	High	No	Full Form	
SPF	40	<i>Spiraea japonica 'Palmer'</i>	Purple Dwarf Screen Ucc	40 cm	C.G.	High	No	Full Form	
PERENNIALS									
EDK	16	<i>Echinacea purpurea 'Van's Rose High'</i>	Dwarf Purple Cone Flower		2 Gd.	High	Yes	Full Form	
DFL	14	<i>Eleocharis acicularis 'Little Ice'</i>	Little Ice Pine Need (Dwarf)		inoc	2 Gd.	High	Yes	Full Form
EDK	160	<i>Echinacea purpurea</i>	High Conehead Echinacea		2 Gd.	High	No	Full Form (PFD Mower)	
NSC	46	<i>Heimoville 'Pardon's Box'</i>	Pardon's Box (White) Daylily		2 Gd.	High	No	Full Form	
NSC	46	<i>Heimoville 'Shade D'ore'</i>	Shade D'ore (Yellow) Daylily		2 Gd.	High	No	Full Form	
FLS	102	<i>Heimoville 'Little Spine'</i>	Little Spine Rudbeckia		2 Gd.	High	No	Full Form	
PIR	10	<i>Periwinkles 'Mousseline'</i>	Boston Ivy		1 Gd.	High	Yes	Full Form	
NSC	70	<i>Heimoville 'Black Eye Susan'</i>	Black Eye Susan		2 Gd.	High	Yes	Full Form (PFD Mower)	
NSC	38	<i>Heimoville 'Yellow Glow'</i>	Yellow Glow Verbena		1 Gd.	High	Yes	Full Form (PFD Mower)	

NOTE: ALL QUANTITIES IN THE LIST OF PLANT MATERIALS ARE TO BE CHECKED BY THE LANDSCAPE CONTRACTOR. ANY DISCREPANCIES ARE TO BE REPORTED TO THE LANDSCAPE ARCHITECT. THE QUANTITIES INDICATED ON THE DRAWINGS SUPERSEDE THE TOTAL QUANTITIES.

