

PLAN OF SURVEY OF  
PART OF BLOCK 14  
PLAN 20M-1211  
TOWN OF OAKVILLE  
REGIONAL MUNICIPALITY OF HALTON

SCALE 1:500



R-PE SURVEYING LTD., O.L.S.

METRIC

DISTANCES AND COORDINATES SHOWN ON THIS PLAN ARE IN METRES  
AND CAN BE CONVERTED TO FEET BY DIVIDING BY 0.3048

I REQUIRE THIS PLAN TO BE DEPOSITED  
UNDER THE LAND TITLES ACT.

DATE JANUARY 17<sup>th</sup>, 2023

*C.P.E.O.*  
C. P. EDWARD O.L.S.

PLAN 20R-22346

RECEIVED AND DEPOSITED

DATE: JANUARY 31, 2023

*B. Hernandez*

REPRESENTATIVE FOR THE LAND REGISTRAR FOR  
THE LAND TITLES DIVISION OF HALTON (No. 20)

NOTES

- DENOTES MONUMENT SET
  - DENOTES MONUMENT FOUND
  - SSIB DENOTES SHORT STANDARD IRON BAR
  - IB DENOTES IRON BAR
  - CP DENOTES CONCRETE PIN
  - P.I.N. DENOTES PROPERTY IDENTIFIER NUMBER
  - SCP DENOTES SPECIFIED CONTROL POINT
  - PL1 DENOTES PLAN 20M-1211
  - PL2 DENOTES PLAN 20R-21290
- ALL FOUND MONUMENTS BY R-PE SURVEYING LTD., O.L.S.

SCHEDULE

PART	PART OF BLOCK	PLAN	P.I.N.
1	14	20M-1211	PART OF 24930-1354
2			

PART 1 IS SUBJECT TO AN EASEMENT IN GROSS AS SET OUT IN INST. No. HR1586374  
PARTS 1 AND 2 ARE SUBJECT TO AN EASEMENT FOR ENTRY AS SET OUT IN INST. No. HR1601615.

BEARING NOTE

BEARINGS ARE GRID, UTM ZONE 17, NAD83 (ORIGINAL), DERIVED FROM:  
SCP 04519910058 NORTH 4815641.283 EAST 601939.858  
SCP 04519910059 NORTH 4818247.361 EAST 602731.721

COORDINATES ARE UTM ZONE 17, NAD83 (ORIGINAL), TO URBAN ACCURACY PER SEC. 14 (2) OF O.REG. 216/10, AND CANNOT, IN THEMSELVES, BE USED TO RE-ESTABLISH CORNERS OR BOUNDARIES SHOWN ON THIS PLAN.

DISTANCES ARE GROUND AND CAN BE CONVERTED TO GRID BY MULTIPLYING BY THE COMBINED SCALE FACTOR OF 0.999707.

SURVEYOR'S CERTIFICATE

I CERTIFY THAT:

1. THIS SURVEY AND PLAN ARE CORRECT AND IN ACCORDANCE WITH THE SURVEYS ACT, THE SURVEYORS ACT AND THE LAND TITLES ACT AND THE REGULATIONS MADE UNDER THEM.

2. THE SURVEY WAS COMPLETED ON THE 6<sup>th</sup> DAY OF DECEMBER, 2022.

DATE JANUARY 17<sup>th</sup>, 2023.

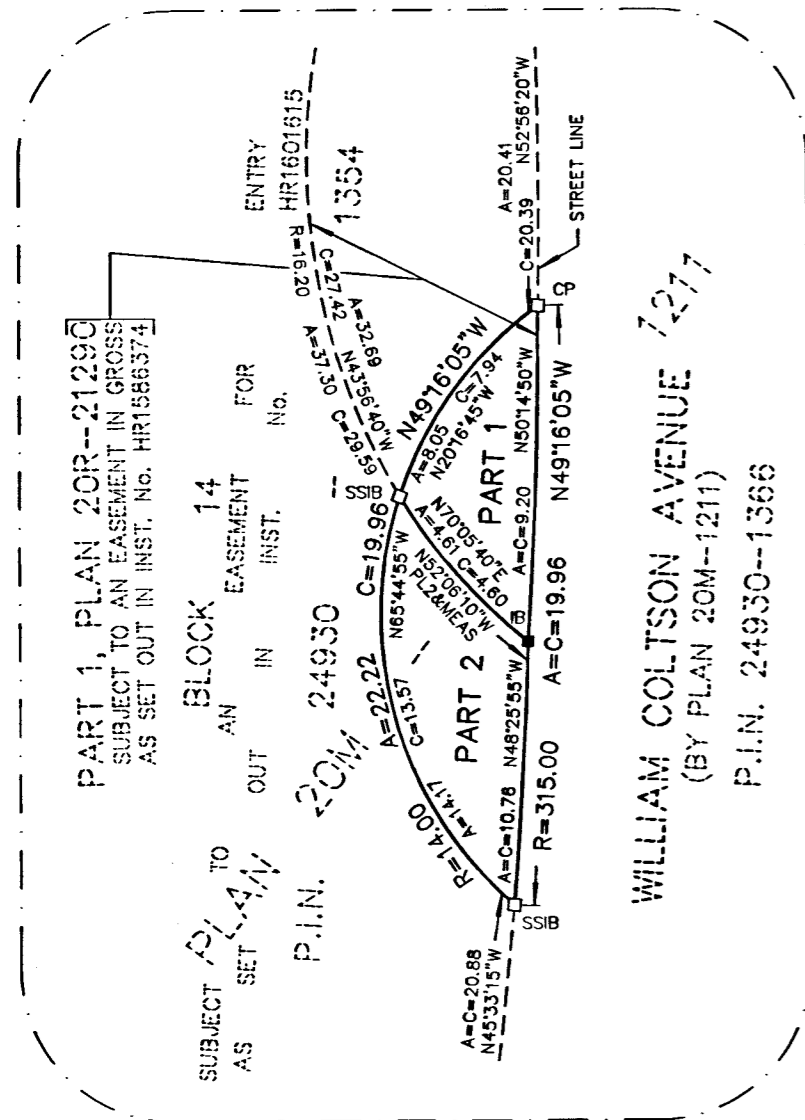
*C.P.E.O.*

C. P. EDWARD  
ONTARIO LAND SURVEYOR

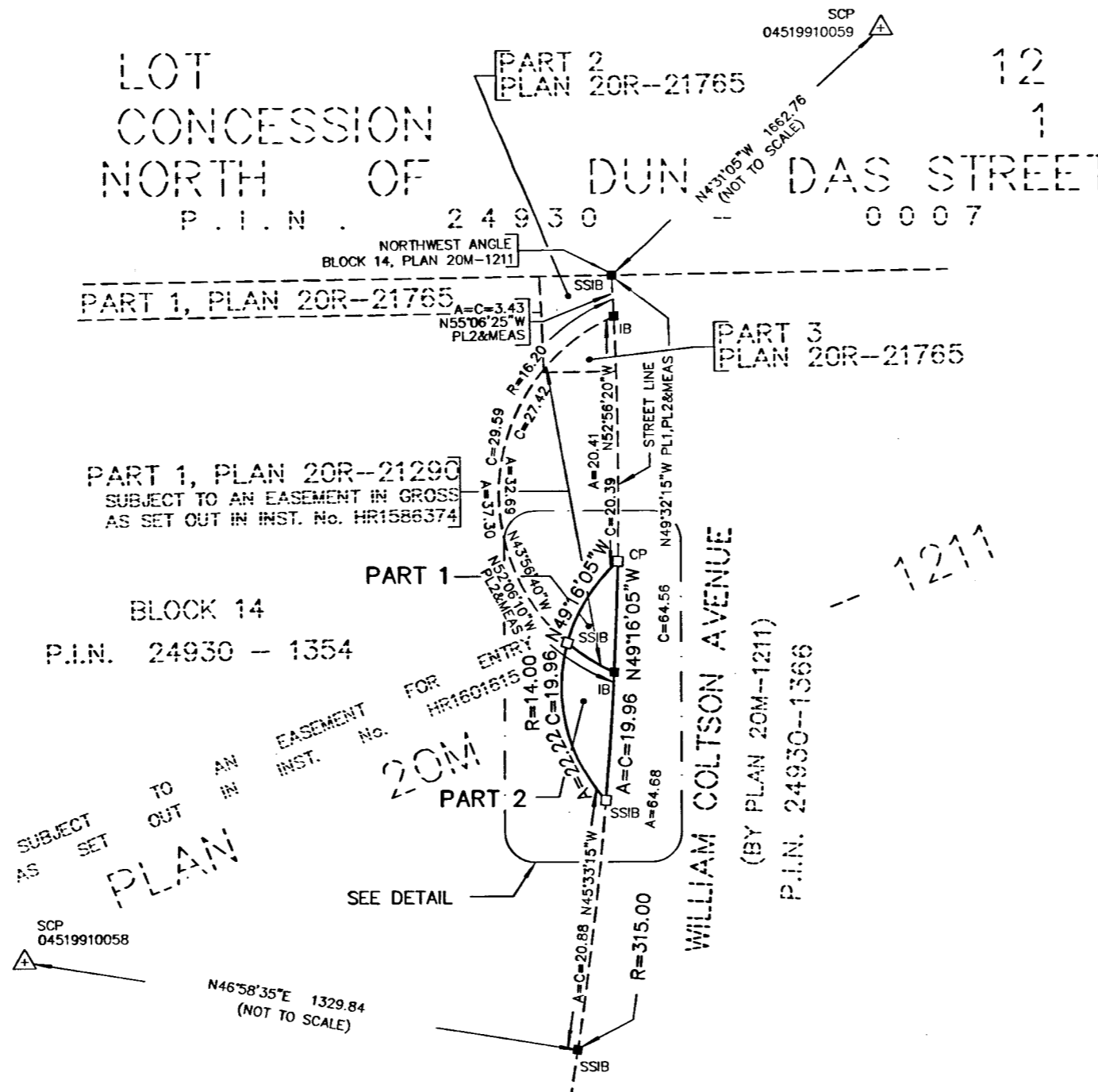
THIS PLAN OF SURVEY RELATES TO AOLS  
PLAN SUBMISSION FORM NUMBER 2203809.



**R-PE SURVEYING LTD.**  
ONTARIO LAND SURVEYORS  
643 Chrislea Road, Suite 7  
Woodbridge, Ontario L4L 8A3  
Tel.(416)635-5000 Fax (416)635-5001  
Tel.(905)264-0881 Fax (905)264-2099  
Website: www.r-pe.ca  
DRAWN: T.C. CHECKED: C.P.E.  
JOB 22-016 CAD FILE 22016r01



DETAIL (NOT TO SCALE)



SCP 04519910058

N46°58'35"E 1329.84  
(NOT TO SCALE)