



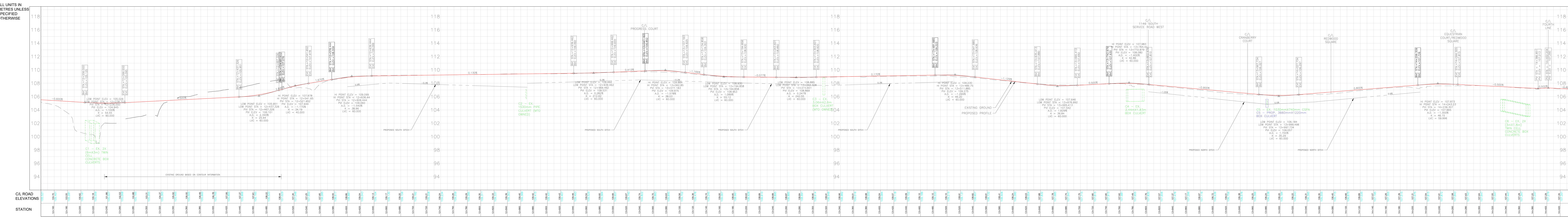
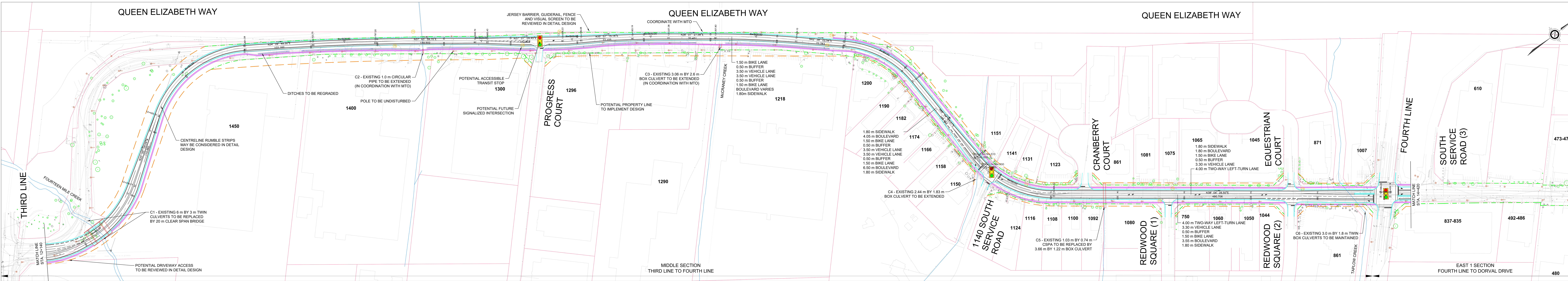
Environmental Study Report

Wycroft Road Improvements from Bronte Road to Kerr Street

Appendix M: Preliminary Design

Submitted to Town of Oakville
by IBI Group
January 2020

SOUTH SERVICE ROAD WEST - THIRD LINE TO FOURTH LINE



WYECROFT ROAD IMPROVEMENTS ENVIRONMENTAL ASSESSMENT - PRELIMINARY PLAN AND PROFILE DESIGN

LEGEND:

- ULTIMATE RIGHT-OF-WAY
- PROPOSED CURB AND GUTTER
- EXISTING PROPERTY LINE
- - - POTENTIAL PROPERTY LINE
- PROPOSED SIDEWALK OR MULTI-USE PATH
- EXISTING HYDRO POLE
- EXISTING VEGETATION
- SIGNALIZED INTERSECTION
- EXISTING TRANSIT STOP
- ↑ TURNING LANE CONFIGURATION

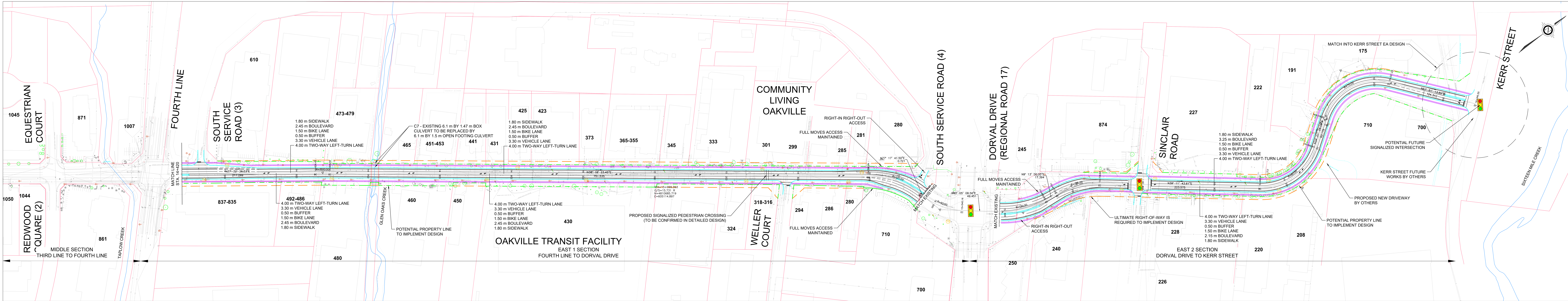
IBI GROUP
7th Floor - 55 St. Clair Avenue West
Toronto ON M4V 2Y7 Canada
tel 416 596 1930 fax 416 596 0644
ibigroup.com

OAKVILLE

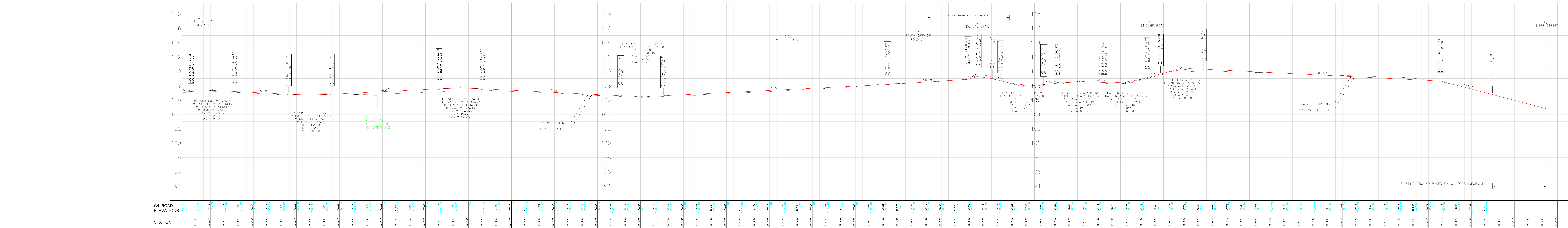
SCALE
50m 0 50m 100m (H)
5.0m 0 5.0m 10m (V)

DATE: AUGUST 28, 2019

WYECROFT ROAD - FOURTH LINE TO KERR STREET



- GENERAL NOTES:**
- ALL DRAWINGS PROVIDED ARE PRELIMINARY (INCLUDING THE ALIGNMENT AND PROFILE), DURING DETAIL DESIGN, THE DESIGN ENGINEER SHALL REVIEW AND MODIFY THE DESIGN AS REQUIRED.
 - PROJECT LIMITS SHOWN ARE APPROXIMATE, DURING DETAIL DESIGN, THE LIMITS OF WORK WILL BE CONFIRMED.
 - ALL UNITS ARE IN METRES UNLESS OTHERWISE SPECIFIED.
 - ALL RELEVANT LOCAL MUNICIPAL, PROVINCIAL AND FEDERAL STANDARDS/REGULATIONS SHALL APPLY WHERE APPLICABLE INCLUDING BUT NOT LIMITED TO: THE TOWN OF OAKVILLE STANDARD DRAWINGS, ONTARIO TRAFFIC MANUAL (OTM), ONTARIO PROVINCIAL STANDARDS (OPS), ACCESSIBILITY FOR ONTARIANS WITH DISABILITY ACT (AODA), AND TRANSPORTATION ASSOCIATION OF CANADA (TAC) GEOMETRIC DESIGN GUIDE FOR CANADIAN ROADS.
 - THE LOCATION AND SIZE OF ALL UTILITY PLANTS, INCLUDING BUT NOT LIMITED TO CONDUITS, WATERMANS, SEWERS, MAINTENANCE HOLES, HYDRO VAULTS, ARE TO BE CONFIRMED DURING DETAIL DESIGN.
 - PAVEMENT MARKINGS AND CYCLING FACILITIES ARE SHOWN CONCEPTUALLY, DURING DETAIL DESIGN, THE FACILITIES SHALL BE REVIEWED AND DESIGNED IN ACCORDANCE WITH APPLICABLE STANDARDS.
 - NOT ALL DRIVEWAYS HAVE BEEN SHOWN ON THE PLANS, DRIVEWAY IMPACTS WILL BE REVIEWED AND CONFIRMED DURING DETAIL DESIGN.
 - THE HORIZONTAL AND VERTICAL ROADWAY GEOMETRY PROVIDED IN THESE PLANS ARE PRELIMINARY, ALL ELEMENTS OF THESE PLANS SHALL BE REVIEWED AND REVISED IN DETAIL DESIGN TO ACCOMMODATE REQUIRED ELEMENTS INCLUDING BUT NOT LIMITED TO: DRAINAGE, UTILITIES, STREETSCAPE ELEMENTS AND FURNISHINGS, AND TURNING CHARACTERISTICS OF VEHICLES AS SPECIFIED BY THE TOWN OF OAKVILLE.
 - POTENTIAL PROPERTY REQUIREMENTS ARE PRELIMINARY DURING DETAIL DESIGN, THE DESIGN ENGINEER SHALL REVIEW AND CONSIDER DESIGN ELEMENTS TO MINIMIZE OR AVOID PROPERTY IMPACTS, SPECIFICALLY IN ENVIRONMENTALLY SENSITIVE AREAS.
 - PROPOSED NON-STANDARD UTILITY LOCATIONS ARE SUBJECT TO APPROVAL BY THE UTILITY COMPANIES.
 - TRANSIT STOP LOCATIONS TO BE CONFIRMED BY OAKVILLE TRANSIT IN DETAIL DESIGN.

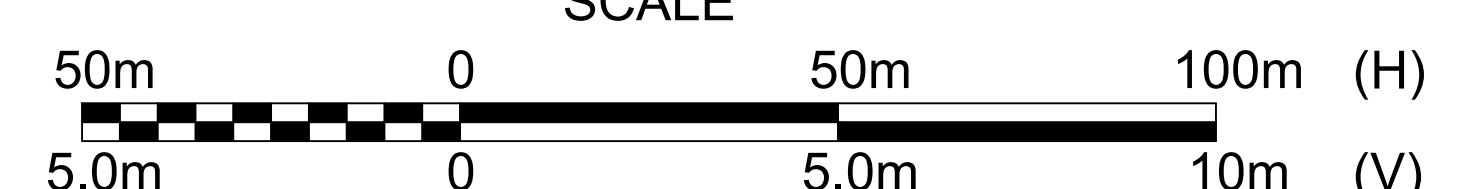


ALL UNITS IN METRES UNLESS SPECIFIED OTHERWISE

WYECROFT ROAD IMPROVEMENTS ENVIRONMENTAL ASSESSMENT - PRELIMINARY PLAN AND PROFILE DESIGN

- LEGEND:**
- ULTIMATE RIGHT-OF-WAY
 - PROPOSED CURB AND GUTTER
 - EXISTING PROPERTY LINE
 - POTENTIAL PROPERTY LINE
 - PROPOSED SIDEWALK OR MULTI-USE PATH
 - EXISTING HYDRO POLE
 - EXISTING VEGETATION
 - SIGNALIZED INTERSECTION
 - EXISTING TRANSIT STOP
 - TURNING LANE CONFIGURATION

IBI GROUP
7th Floor - 55 St. Clair Avenue West
Toronto ON M4V 2Y7 Canada
tel 416 596 1930 fax 416 596 0844
ibigroup.com



DATE: AUGUST 28, 2019