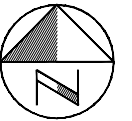




Appendix K
Remnant Channel
Alternative Assessment



Plotted: 2019-09-05
Last Saved: 2019-09-05
Plotted By: richard.bartolo
Last Saved By: richard.bartolo
Path: P:\Work\TP115045\Water\Draw\2019-09 (SWM)\FigRC-PropImpacts.dwg

- LEGEND**
- PROPERTY LINE
 - CONTOUR (0.5m)
 - REMNANT CHANNEL
 - UNDERGROUND CONVEYANCE
 - FURTHER ASSESSMENT REQUIRED

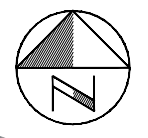
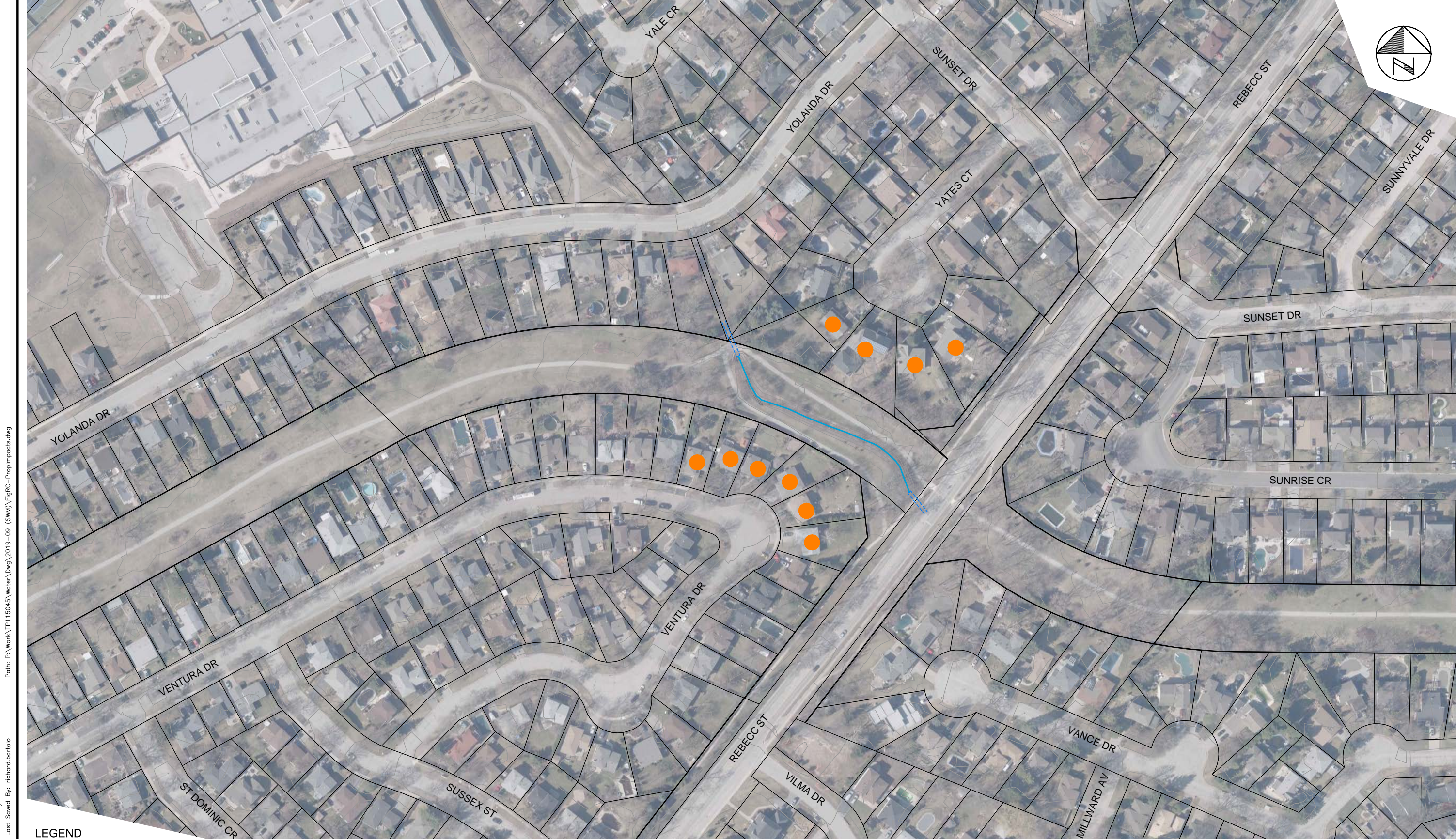
OAKVILLE STORM SEWER
MASTER PLAN
PHASE II
TOWN OF OAKVILLE

100 YEAR STORM EVENT
REMNANT CHANNEL
PROPERTIES FOR FURTHER ASSESSMENT
(EXISTING CONDITIONS)



SCALE VALID ONLY FOR
24"x36" VERSION

Scale	1:750
	0 7.5 15 30
Consultant File No.	TP115045
Figure No.	RC-1



Plotted: 2019-09-05
 Last Saved: 2019-09-05
 Plotted By: richard.bartolo
 Last Saved By: richard.bartolo
 Path: P:\Work\TP115045\Water\DWG\2019-09 (SWM)\FigRC-PropImpacts.dwg

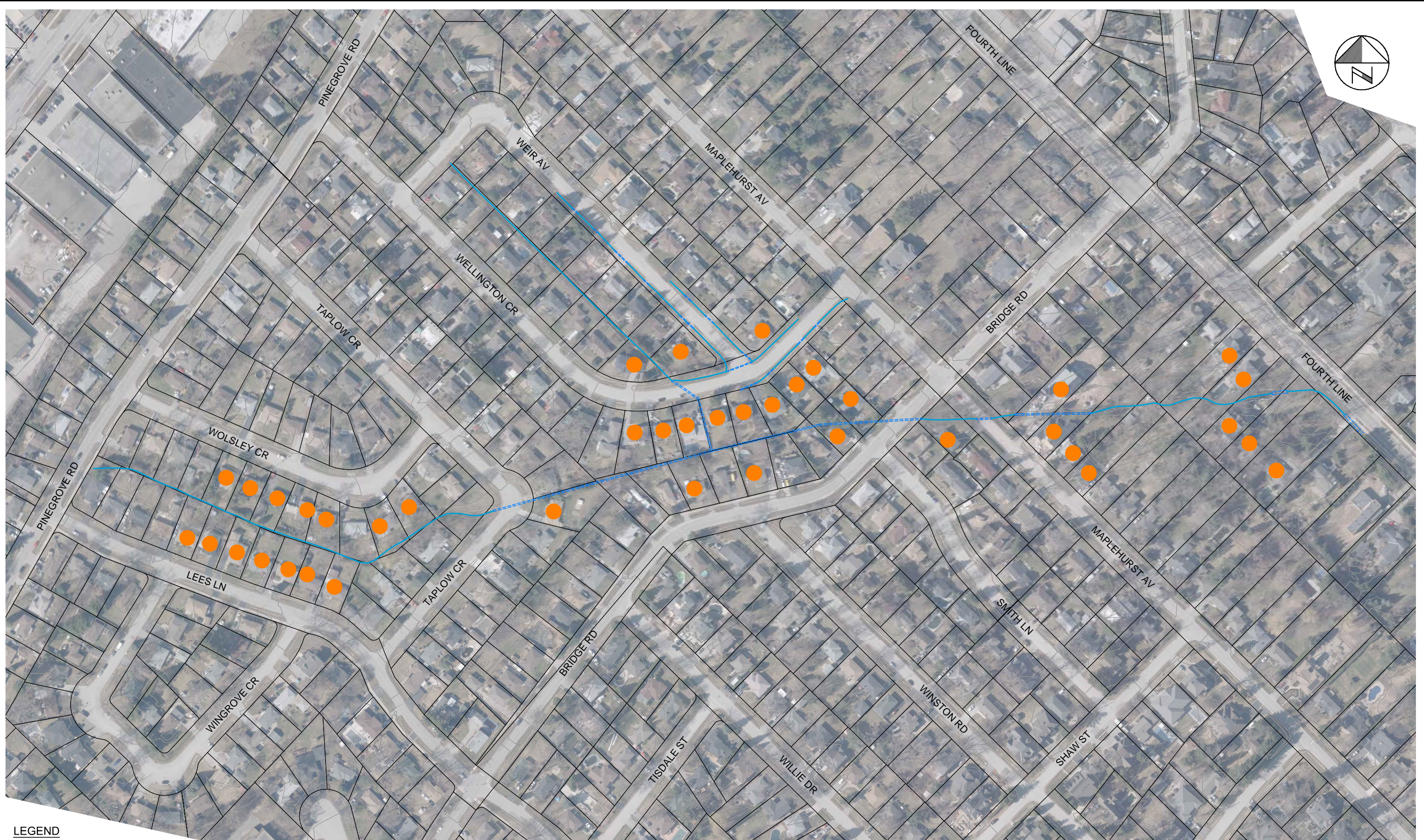
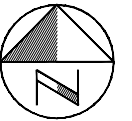
LEGEND	
	PROPERTY LINE
	CONTOUR (0.5m)
	REMNANT CHANNEL
	UNDERGROUND CONVEYANCE
	FURTHER ASSESSMENT REQUIRED

**OAKVILLE STORM SEWER
 MASTER PLAN
 PHASE II
 TOWN OF OAKVILLE**

**100 YEAR STORM EVENT
 REMNANT CHANNEL
 PROPERTIES FOR FURTHER ASSESSMENT
 (EXISTING CONDITIONS)**



SCALE VALID ONLY FOR 24"x36" VERSION	
Scale	1:1000
Consultant File No.	TP115045
Figure No.	RC-2



Plotted By: richard.bartolo
Last Saved By: richard.bartolo
2019-09-05
2019-09-05
Path: P:\Work\TP115045\Water\Draw\2019-09 (SWM)\FigRC-PropImpacts.dwg

- LEGEND**
- PROPERTY LINE
 - CONTOUR (0.5m)
 - REMNANT CHANNEL
 - UNDERGROUND CONVEYANCE
 - FURTHER ASSESSMENT REQUIRED

OAKVILLE STORM SEWER
MASTER PLAN
PHASE II
TOWN OF OAKVILLE

100 YEAR STORM EVENT
REMNANT CHANNEL
PROPERTIES FOR FURTHER ASSESSMENT
(EXISTING CONDITIONS)

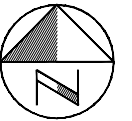


SCALE VALID ONLY FOR
24"x36" VERSION

Scale 1:1250
0 12.5 25 50

Consultant File No.
TP115045

Figure No.
RC-3



Path: P:\Work\TP115045\Water\Draw\2019-09 (SWM)\FigRC-PropImpacts.dwg

Plotted By: richard.bartolo
Last Saved By: richard.bartolo
2019-09-05
Last Saved: 2019-09-05

- LEGEND**
- PROPERTY LINE
 - CONTOUR (0.5m)
 - REMNANT CHANNEL
 - UNDERGROUND CONVEYANCE
 - FURTHER ASSESSMENT REQUIRED

**OAKVILLE STORM SEWER
MASTER PLAN
PHASE II
TOWN OF OAKVILLE**

**100 YEAR STORM EVENT
REMNANT CHANNEL
PROPERTIES FOR FURTHER ASSESSMENT
(EXISTING CONDITIONS)**

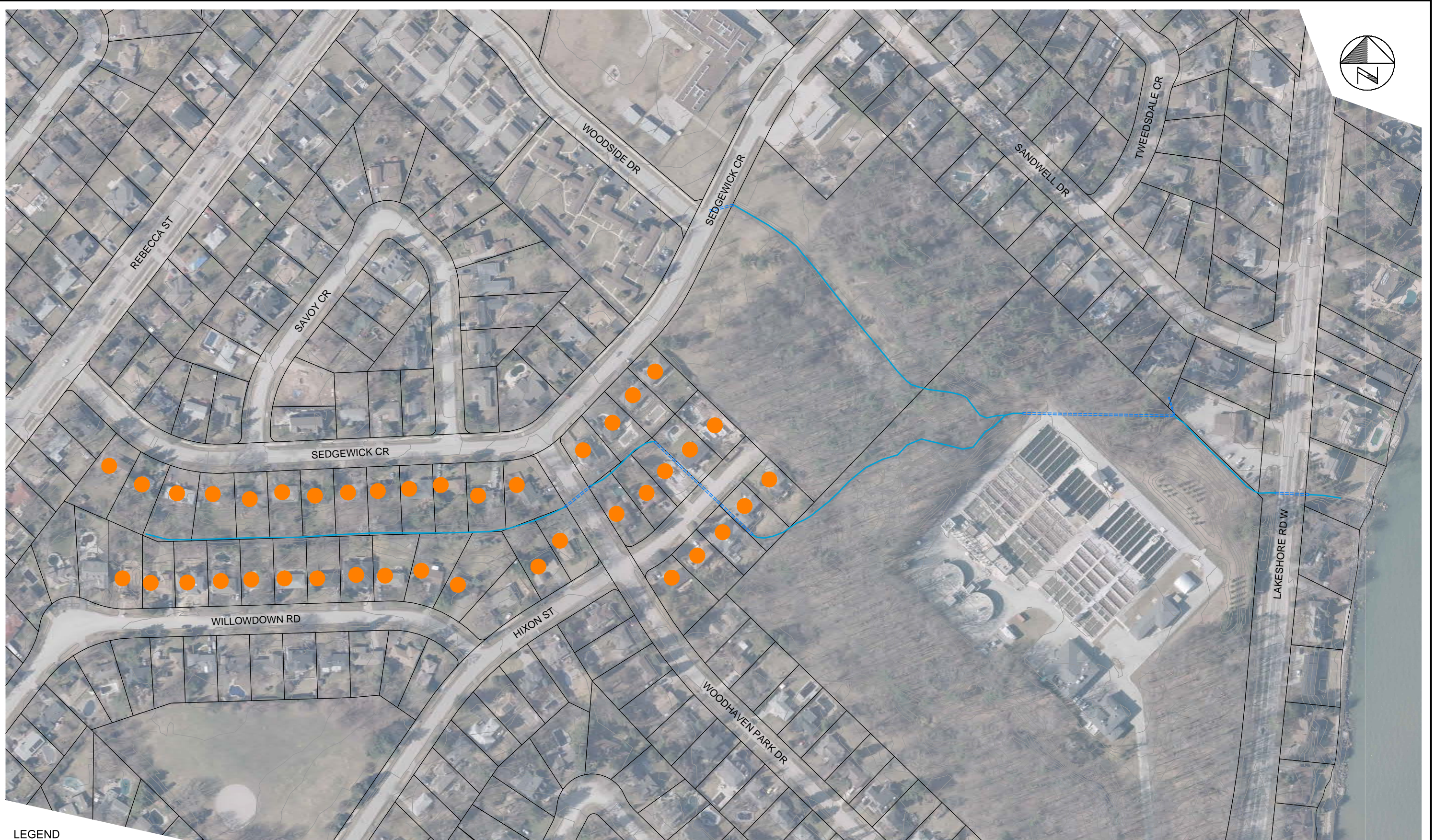
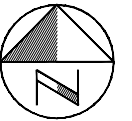


SCALE VALID ONLY FOR
24"x36" VERSION

Scale 1:1250
0 12.5 25 50

Consultant File No.
TP115045

Figure No.
RC-4



Plotted: 2019-09-05
Last Saved: 2019-09-05
Plotted By: richard.bartolo
Last Saved By: richard.bartolo
Path: P:\Work\TP115045\Water\Draw\2019-09 (SWM)\FigRC-PropImpacts.dwg

- LEGEND**
- PROPERTY LINE
 - CONTOUR (0.5m)
 - REMNANT CHANNEL
 - UNDERGROUND CONVEYANCE
 - FURTHER ASSESSMENT REQUIRED

OAKVILLE STORM SEWER
MASTER PLAN
PHASE II
TOWN OF OAKVILLE

100 YEAR STORM EVENT
REMNANT CHANNEL
PROPERTIES FOR FURTHER ASSESSMENT
(EXISTING CONDITIONS)

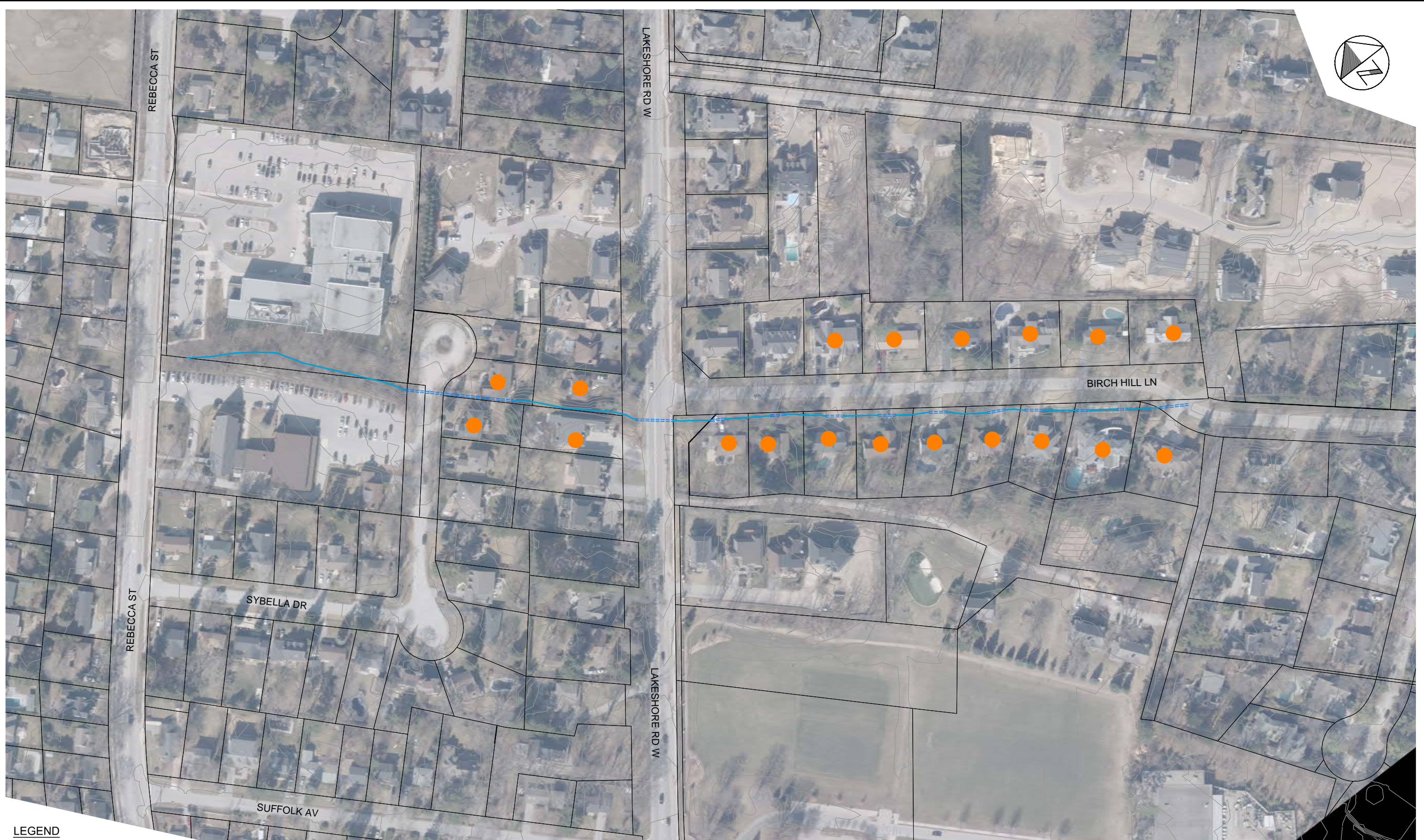
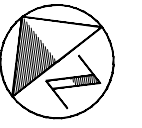


SCALE VALID ONLY FOR
24"x36" VERSION

Scale 1:1250
0 12.5 25 50

Consultant File No.
TP115045

Figure No.
RC-5



Plotted: 2019-09-05
Last Saved: 2019-09-05
Plotted By: richard.bartolo
Last Saved By: richard.bartolo
Path: P:\Work\TP115045\Water\DWG\2019-09 (SWM)\FigRC-PropImpacts.dwg

- LEGEND**
- PROPERTY LINE
 - CONTOUR (0.5m)
 - REMNANT CHANNEL
 - UNDERGROUND CONVEYANCE
 - FURTHER ASSESSMENT REQUIRED

OAKVILLE STORM SEWER
MASTER PLAN
PHASE II
TOWN OF OAKVILLE

100 YEAR STORM EVENT
REMNANT CHANNEL
PROPERTIES FOR FURTHER ASSESSMENT
(EXISTING CONDITIONS)



SCALE VALID ONLY FOR
24"x36" VERSION

Scale 1:1000
0 10 20 40

Consultant File No.
TP115045






Figure No.
RC-6

Path: P:\Work\TP115045\Water\DWG\2019-09 (SWM)\FigRC-PropImpacts.dwg

Plotted By: richard.bartolo
Last Saved By: richard.bartolo
2019-09-05
Last Saved: 2019-09-05



LEGEND

	PROPERTY LINE
	CONTOUR (0.5m)
	REMNANT CHANNEL
	UNDERGROUND CONVEYANCE
	FURTHER ASSESSMENT REQUIRED

OAKVILLE STORM SEWER
MASTER PLAN
PHASE II
TOWN OF OAKVILLE

100 YEAR STORM EVENT
REMNANT CHANNEL
PROPERTIES FOR FURTHER ASSESSMENT
(EXISTING CONDITIONS)

wood.

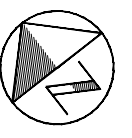
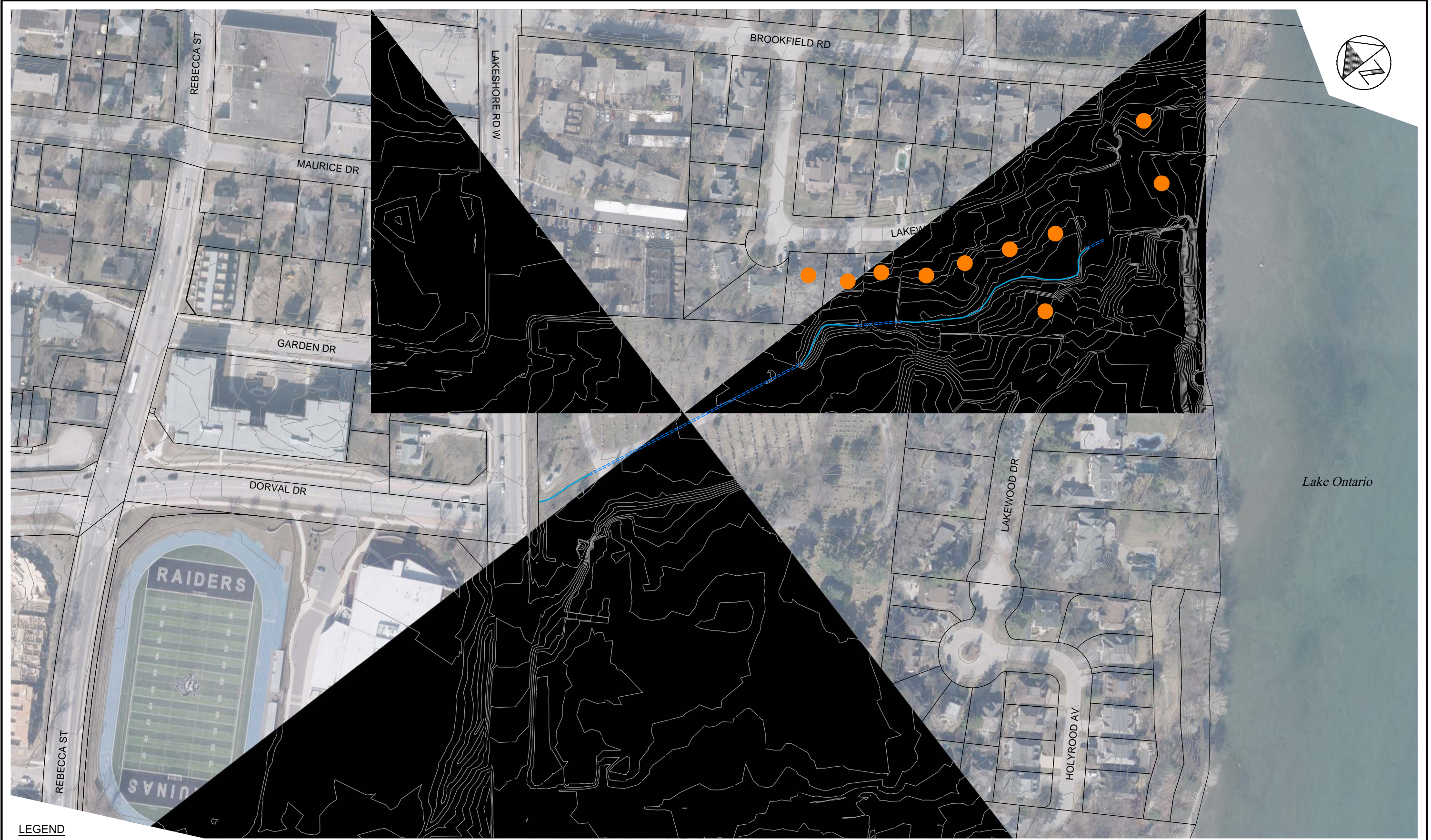
SCALE VALID ONLY FOR
24"x36" VERSION

Scale 1:1000
0 10 20 40

Consultant File No.
TP115045

Figure No.
RC-7

Plotted: 2019-09-05
 Last Saved: 2019-09-05
 Plotted By: richard.bartolo
 Last Saved By: richard.bartolo
 Path: P:\Work\TP115045\Water\Draw\2019-09 (SWM)\FigRC-PropImpacts.dwg



LEGEND

	PROPERTY LINE
	CONTOUR (0.5m)
	REMNANT CHANNEL
	UNDERGROUND CONVEYANCE
	FURTHER ASSESSMENT REQUIRED

OAKVILLE STORM SEWER
 MASTER PLAN
 PHASE II
 TOWN OF OAKVILLE

100 YEAR STORM EVENT
 REMNANT CHANNEL
 PROPERTIES FOR FURTHER ASSESSMENT
 (EXISTING CONDITIONS)

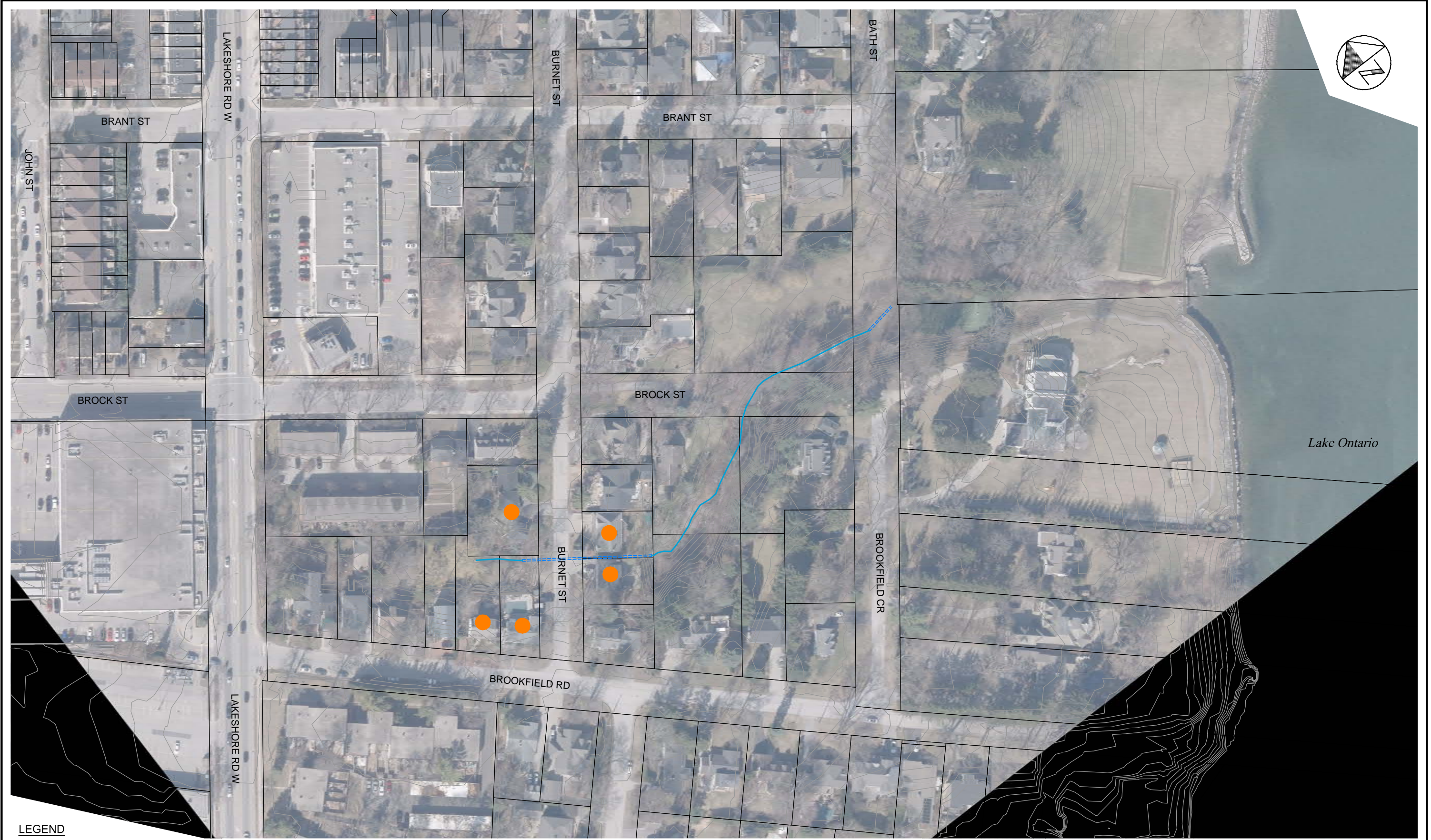
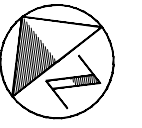


SCALE VALID ONLY FOR
 24"x36" VERSION

Scale 1:1000
 0 10 20 40

Consultant File No.
 TP115045

Figure No.
 RC-8



Path: P:\Work\TP115045\Water\Draw\2019-09 (SWM)\FigRC-PropImpacts.dwg

Plotted By: richard.bartolo
Last Saved By: richard.bartolo
2019-09-05
Last Saved: 2019-09-05

- LEGEND**
- PROPERTY LINE
 - CONTOUR (0.5m)
 - REMNANT CHANNEL
 - UNDERGROUND CONVEYANCE
 - FURTHER ASSESSMENT REQUIRED

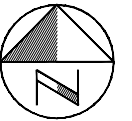
OAKVILLE STORM SEWER
MASTER PLAN
PHASE II
TOWN OF OAKVILLE

100 YEAR STORM EVENT
REMNANT CHANNEL
PROPERTIES FOR FURTHER ASSESSMENT
(EXISTING CONDITIONS)



SCALE VALID ONLY FOR
24"x36" VERSION

Scale	1:750
	0 7.5 15 30
Consultant File No.	TP115045
Figure No.	RC-9



Plotted By: richard.bartolo
Last Saved By: richard.bartolo
2019-09-05
Last Saved: 2019-09-05
Path: P:\Work\TP115045\Water\Draw\2019-09 (SWM)\Fig RC-FlowLimits.dwg

- LEGEND**
- PROPERTY LINE
 - CONTOUR (0.5m)
 - REMNANT CHANNEL
 - UNDERGROUND CONVEYANCE
 - REMNANT CHANNEL FLOW LIMIT

OAKVILLE STORM SEWER
MASTER PLAN
PHASE II
TOWN OF OAKVILLE

100 YEAR STORM EVENT
REMNANT CHANNEL
FLOW LIMITS
(EXISTING CONDITIONS)

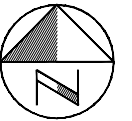


SCALE VALID ONLY FOR
24"x36" VERSION

Scale 1:750
0 7.5 15 30

Consultant File No.
TP115045






Figure No.
RC-FL-1



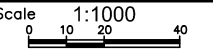
Plotted By: richard.bartolo
Last Saved By: richard.bartolo
2019-09-05
2019-09-05
Path: P:\Work\TP115045\Water\DWG\2019-09 (SWM)\Fig RC-FlowLimits.dwg



LEGEND

-  PROPERTY LINE
-  CONTOUR (0.5m)
-  REMNANT CHANNEL
-  UNDERGROUND CONVEYANCE
-  REMNANT CHANNEL FLOW LIMIT

SCALE VALID ONLY FOR 24"x36" VERSION



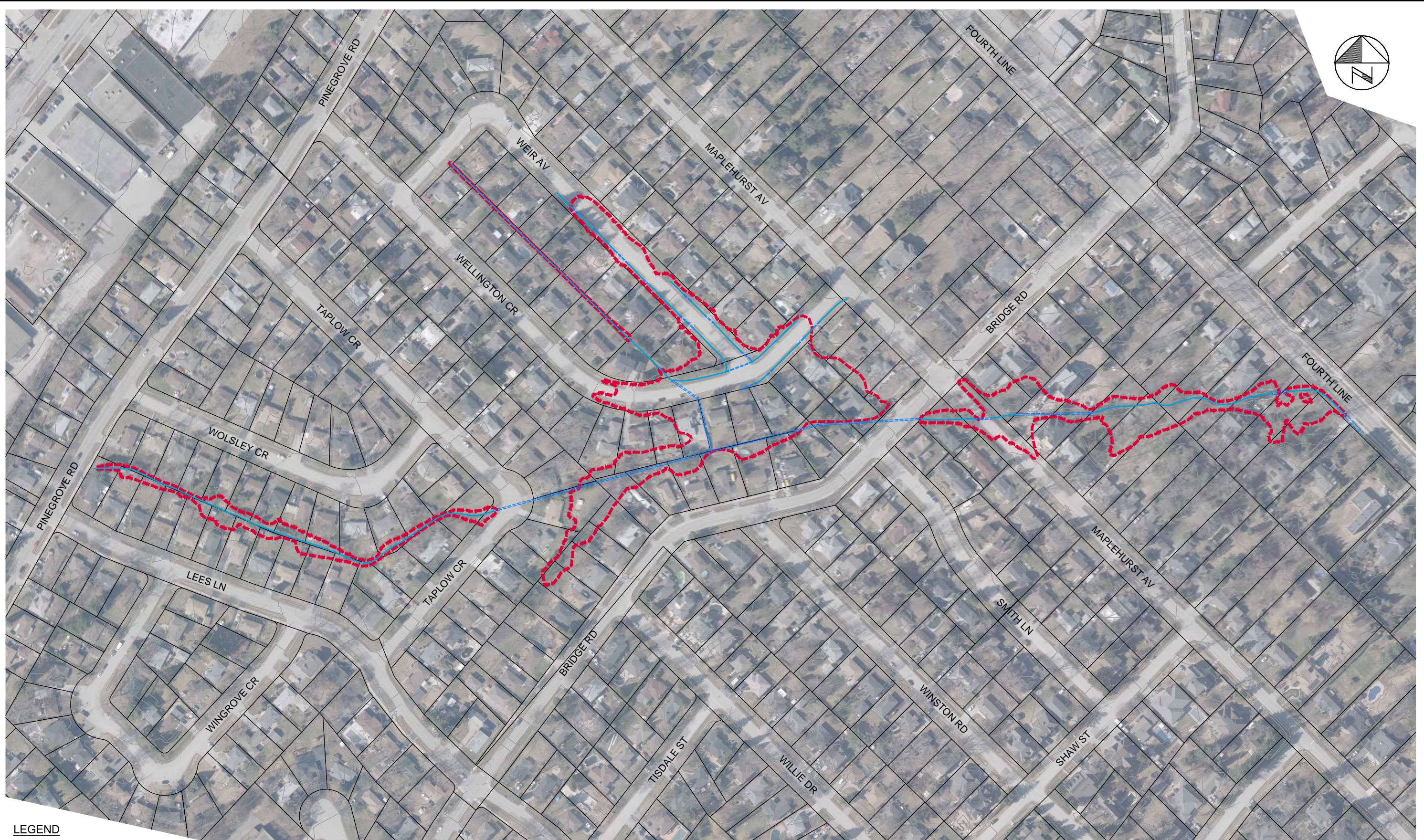
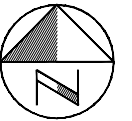
OAKVILLE STORM SEWER
MASTER PLAN
PHASE II
TOWN OF OAKVILLE

100 YEAR STORM EVENT
REMNANT CHANNEL
FLOW LIMITS
(EXISTING CONDITIONS)








Consultant File No.
TP115045

Figure No.
RC-FL-2



Plotted By: richard.bartolo
Last Saved By: richard.bartolo
2019-09-05
2019-09-05
Path: P:\Work\TP115045\Water\Draw\2019-09 (SWM)\Fig RC-FlowLimits.dwg

LEGEND

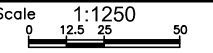
-  PROPERTY LINE
-  CONTOUR (0.5m)
-  REMNANT CHANNEL
-  UNDERGROUND CONVEYANCE
-  REMNANT CHANNEL FLOW LIMIT

**OAKVILLE STORM SEWER
MASTER PLAN
PHASE II
TOWN OF OAKVILLE**

**100 YEAR STORM EVENT
REMNANT CHANNEL
FLOW LIMITS
(EXISTING CONDITIONS)**

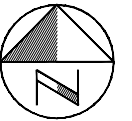


SCALE VALID ONLY FOR
24"x36" VERSION



Scale 1:1250
Consultant File No.
TP115045






Figure No.
RC-FL-3



Path: P:\Work\TP115045\Water\Draw\2019-09 (SWM)\Fig RC-FlowLimits.dwg

Plotted By: richard.bartolo
Last Saved By: richard.bartolo
2019-09-05
Last Saved: 2019-09-05

LEGEND

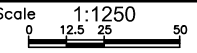
-  PROPERTY LINE
-  CONTOUR (0.5m)
-  REMNANT CHANNEL
-  UNDERGROUND CONVEYANCE
-  REMNANT CHANNEL FLOW LIMIT

OAKVILLE STORM SEWER
 MASTER PLAN
 PHASE II
 TOWN OF OAKVILLE

100 YEAR STORM EVENT
 REMNANT CHANNEL
 FLOW LIMITS
 (EXISTING CONDITIONS)

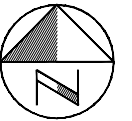


SCALE VALID ONLY FOR 24"x36" VERSION








Scale 1:1250
Consultant File No. TP115045

Figure No. RC-FL-4



Plotted By: richard.bartolo
Last Saved By: richard.bartolo
2019-09-05
2019-09-05
Path: P:\Work\TP115045\Water\Draw\2019-09 (SWM)\Fig RC-FlowLimits.dwg

LEGEND

-  PROPERTY LINE
-  CONTOUR (0.5m)
-  REMNANT CHANNEL
-  UNDERGROUND CONVEYANCE
-  REMNANT CHANNEL FLOW LIMIT

SCALE VALID ONLY FOR 24"x36" VERSION

OAKVILLE STORM SEWER
MASTER PLAN
PHASE II
TOWN OF OAKVILLE

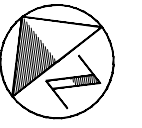
100 YEAR STORM EVENT
REMNANT CHANNEL
FLOW LIMITS
(EXISTING CONDITIONS)



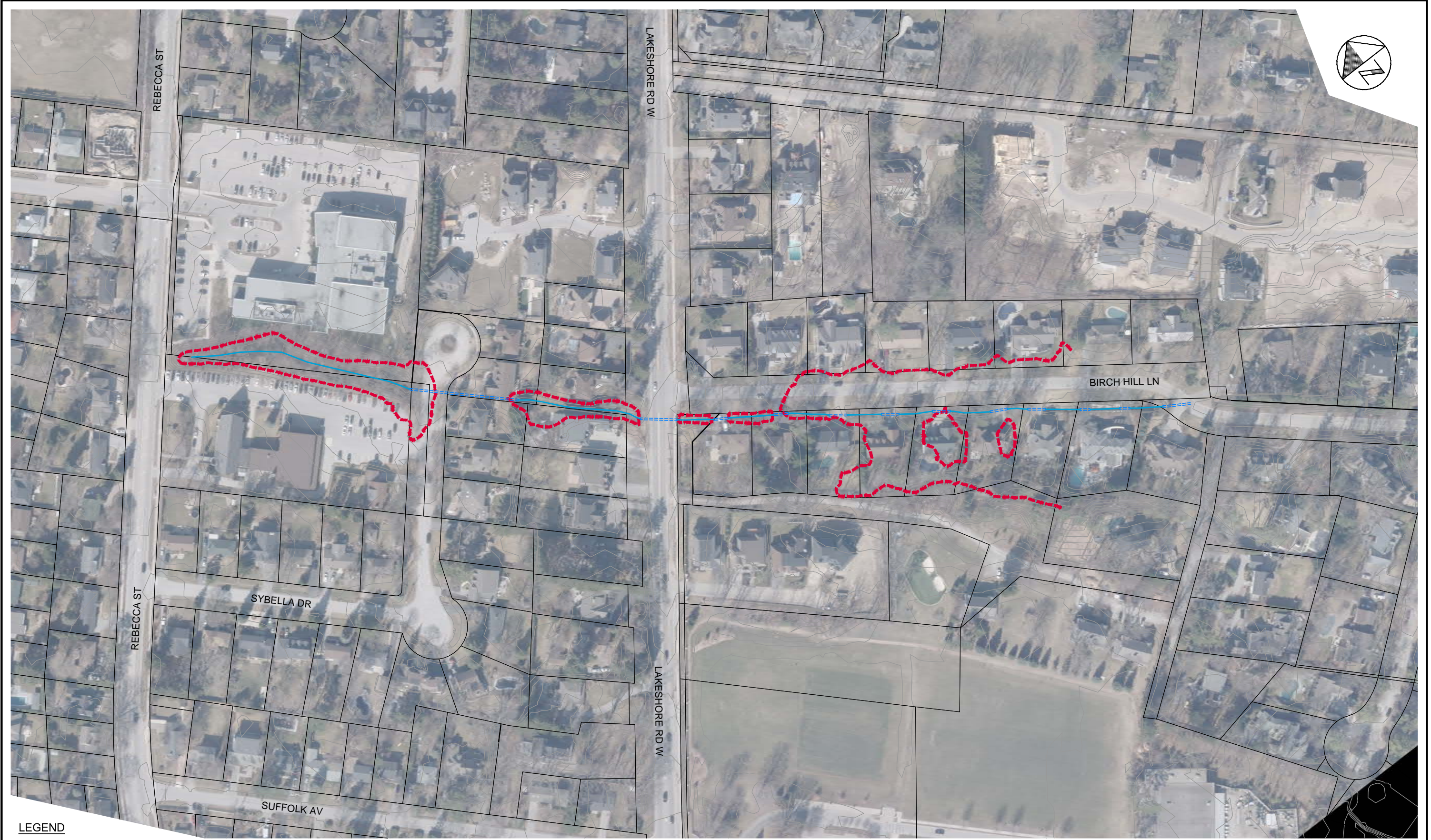
Scale 1:1250
0 12.5 25 50

Consultant File No.
TP115045

Figure No.
RC-FL-5



Plotted: 2019-09-05
Last Saved: 2019-09-05
Path: P:\Work\TP115045\Water\Draw\2019-09 (SWM)\Fig RC-FlowLimits.dwg
Plotted By: richard.bartolo
Last Saved By: richard.bartolo



LEGEND

	PROPERTY LINE
	CONTOUR (0.5m)
	REMNANT CHANNEL
	UNDERGROUND CONVEYANCE
	REMNANT CHANNEL FLOW LIMIT

OAKVILLE STORM SEWER
MASTER PLAN
PHASE II
TOWN OF OAKVILLE

100 YEAR STORM EVENT
REMNANT CHANNEL
FLOW LIMITS
(EXISTING CONDITIONS)



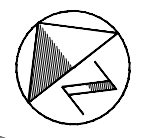
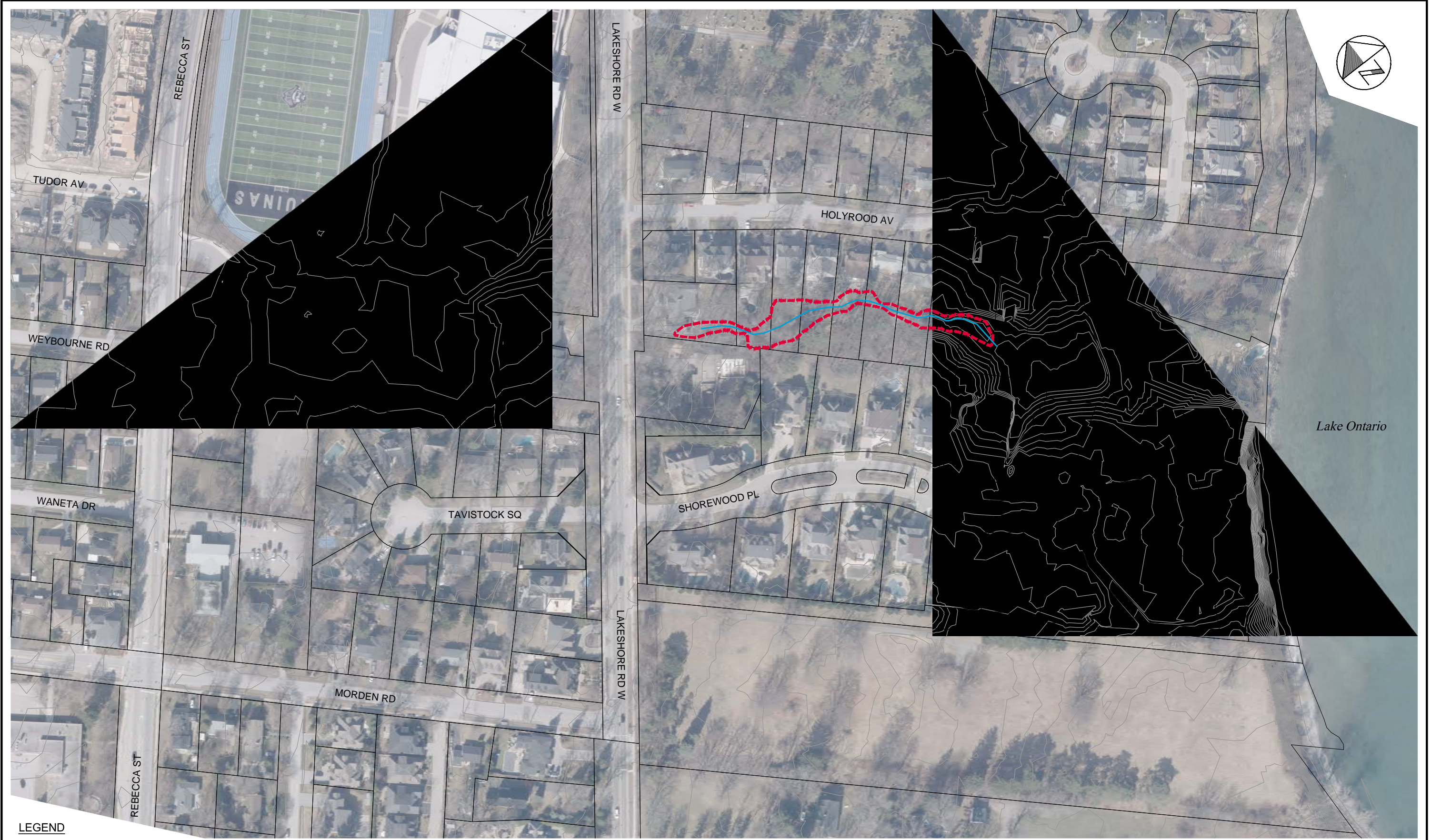
SCALE VALID ONLY FOR
24"x36" VERSION

Scale 1:1000
0 10 20 40






Consultant File No.
TP115045

Figure No.
RC-FL-6

Plotted By: richard.bartolo
 Last Saved By: richard.bartolo
 2019-09-05
 Last Saved: 2019-09-05
 Path: P:\Work\TP115045\Water\Draw\2019-09 (SWM)\Fig RC-FlowLimits.dwg



LEGEND

-  PROPERTY LINE
-  CONTOUR (0.5m)
-  REMNANT CHANNEL
-  UNDERGROUND CONVEYANCE
-  REMNANT CHANNEL FLOW LIMIT

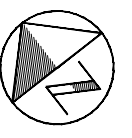
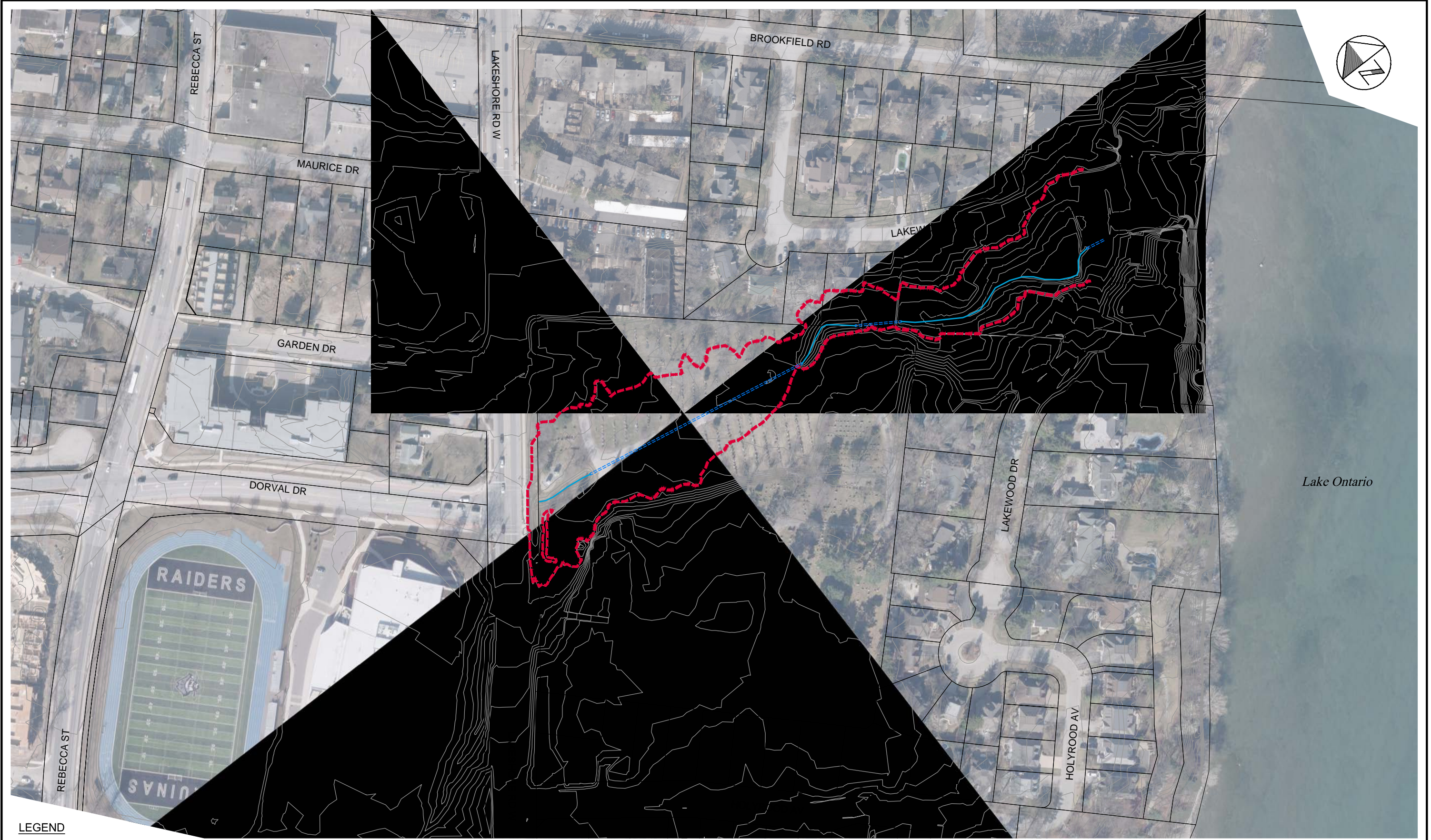
OAKVILLE STORM SEWER
 MASTER PLAN
 PHASE II
 TOWN OF OAKVILLE

100 YEAR STORM EVENT
 REMNANT CHANNEL
 FLOW LIMITS
 (EXISTING CONDITIONS)



SCALE VALID ONLY FOR
 24"x36" VERSION
 Scale 1:1000
 0 10 20 40
 Consultant File No.
 TP115045
 Figure No.
 RC-FL-7

Plotted By: richard.bartolo
 Last Saved By: richard.bartolo
 Path: P:\Work\TP115045\Water\Draw\2019-09 (SWM)\Fig RC-FlowLimits.dwg
 Plotted: 2019-09-05
 Last Saved: 2019-09-05



LEGEND

	PROPERTY LINE
	CONTOUR (0.5m)
	REMNANT CHANNEL
	UNDERGROUND CONVEYANCE
	REMNANT CHANNEL FLOW LIMIT

**OAKVILLE STORM SEWER
 MASTER PLAN
 PHASE II
 TOWN OF OAKVILLE**

**100 YEAR STORM EVENT
 REMNANT CHANNEL
 FLOW LIMITS
 (EXISTING CONDITIONS)**



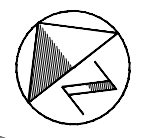
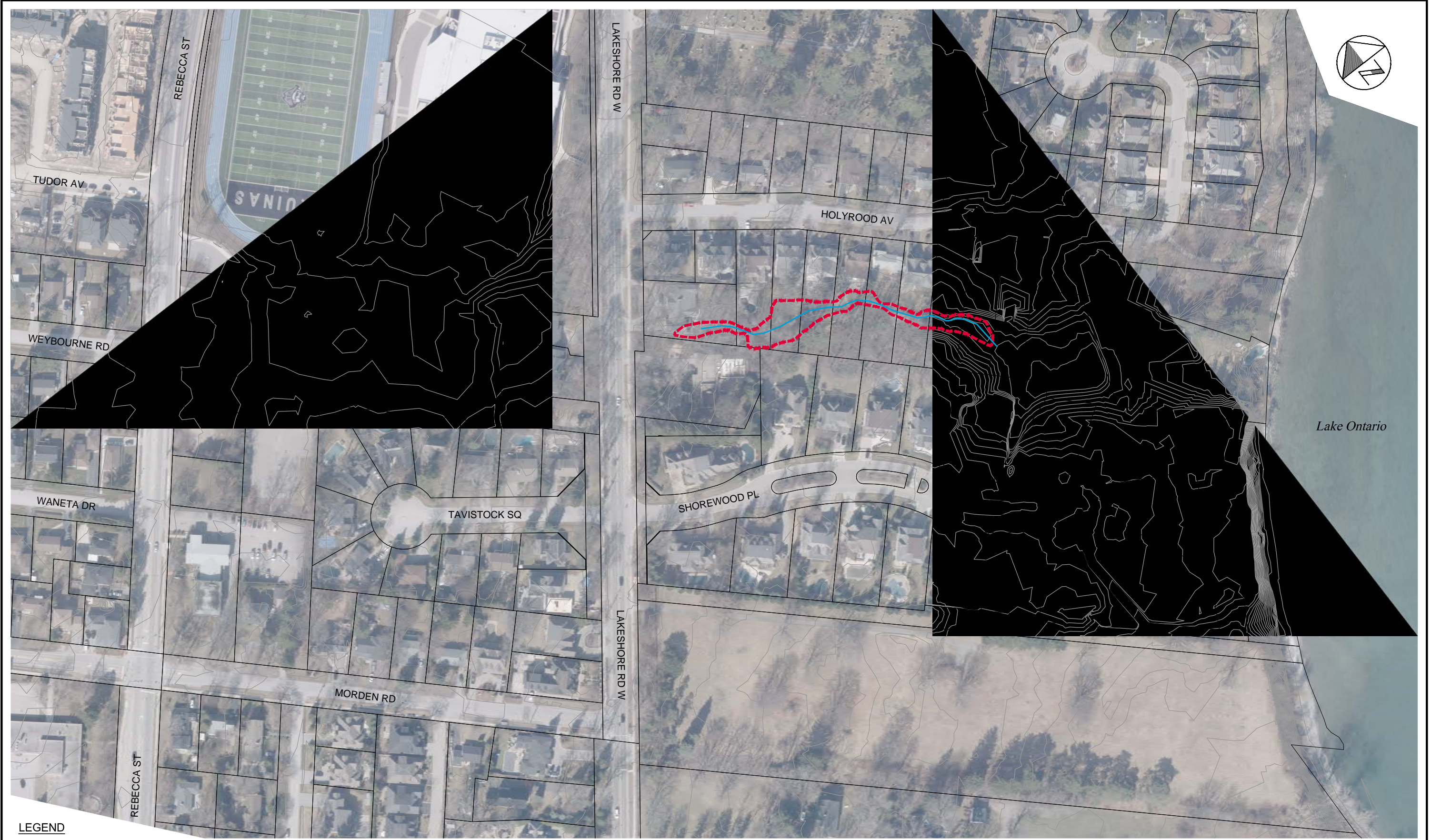
SCALE VALID ONLY FOR
 24"x36" VERSION

Scale 1:1000
 0 10 20 40






Consultant File No.
 TP115045

Figure No.
 RC-FL-8

Plotted By: richard.bartolo
 Last Saved By: richard.bartolo
 2019-09-05
 Last Saved: 2019-09-05
 Path: P:\Work\TP115045\Water\Draw\2019-09 (SWM)\Fig RC-FlowLimits.dwg

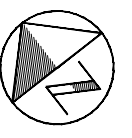
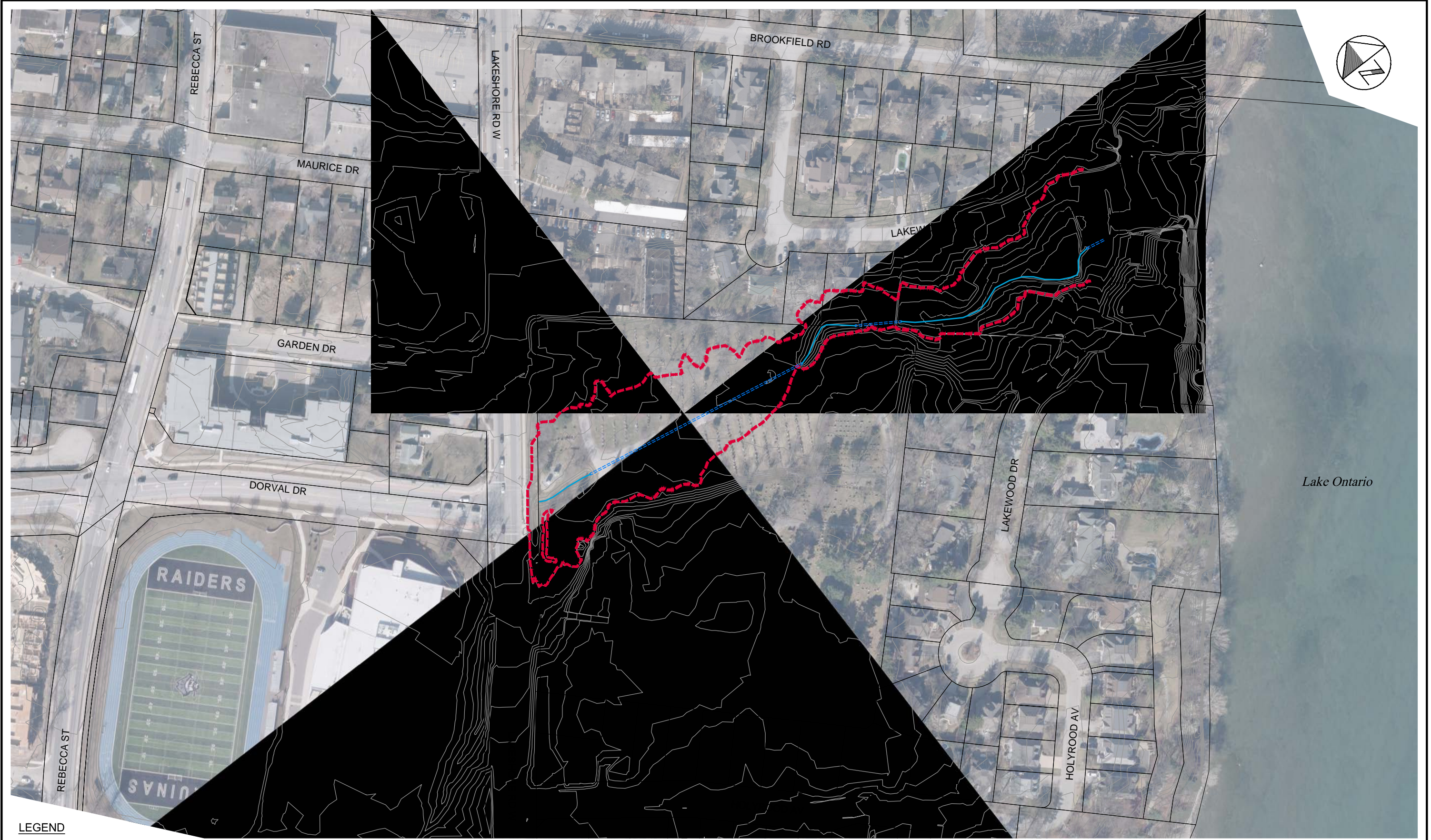


LEGEND






-  PROPERTY LINE
-  CONTOUR (0.5m)
-  REMNANT CHANNEL
-  UNDERGROUND CONVEYANCE
-  REMNANT CHANNEL FLOW LIMIT

<p>OAKVILLE STORM SEWER MASTER PLAN PHASE II TOWN OF OAKVILLE</p>	<p>100 YEAR STORM EVENT REMNANT CHANNEL FLOW LIMITS (EXISTING CONDITIONS)</p>	<p>wood.</p>	<p>SCALE VALID ONLY FOR 24"x36" VERSION</p> <p>Scale 1:1000 </p> <p>Consultant File No. TP115045</p> <p>Figure No. RC-FL-7</p>
---	---	---------------------	---

Plotted By: richard.bartolo
 Last Saved By: richard.bartolo
 Path: P:\Work\TP115045\Water\Draw\2019-09 (SWM)\Fig RC-FlowLimits.dwg
 Plotted: 2019-09-05
 Last Saved: 2019-09-05



LEGEND

	PROPERTY LINE
	CONTOUR (0.5m)
	REMNANT CHANNEL
	UNDERGROUND CONVEYANCE
	REMNANT CHANNEL FLOW LIMIT

OAKVILLE STORM SEWER
 MASTER PLAN
 PHASE II
 TOWN OF OAKVILLE

100 YEAR STORM EVENT
 REMNANT CHANNEL
 FLOW LIMITS
 (EXISTING CONDITIONS)

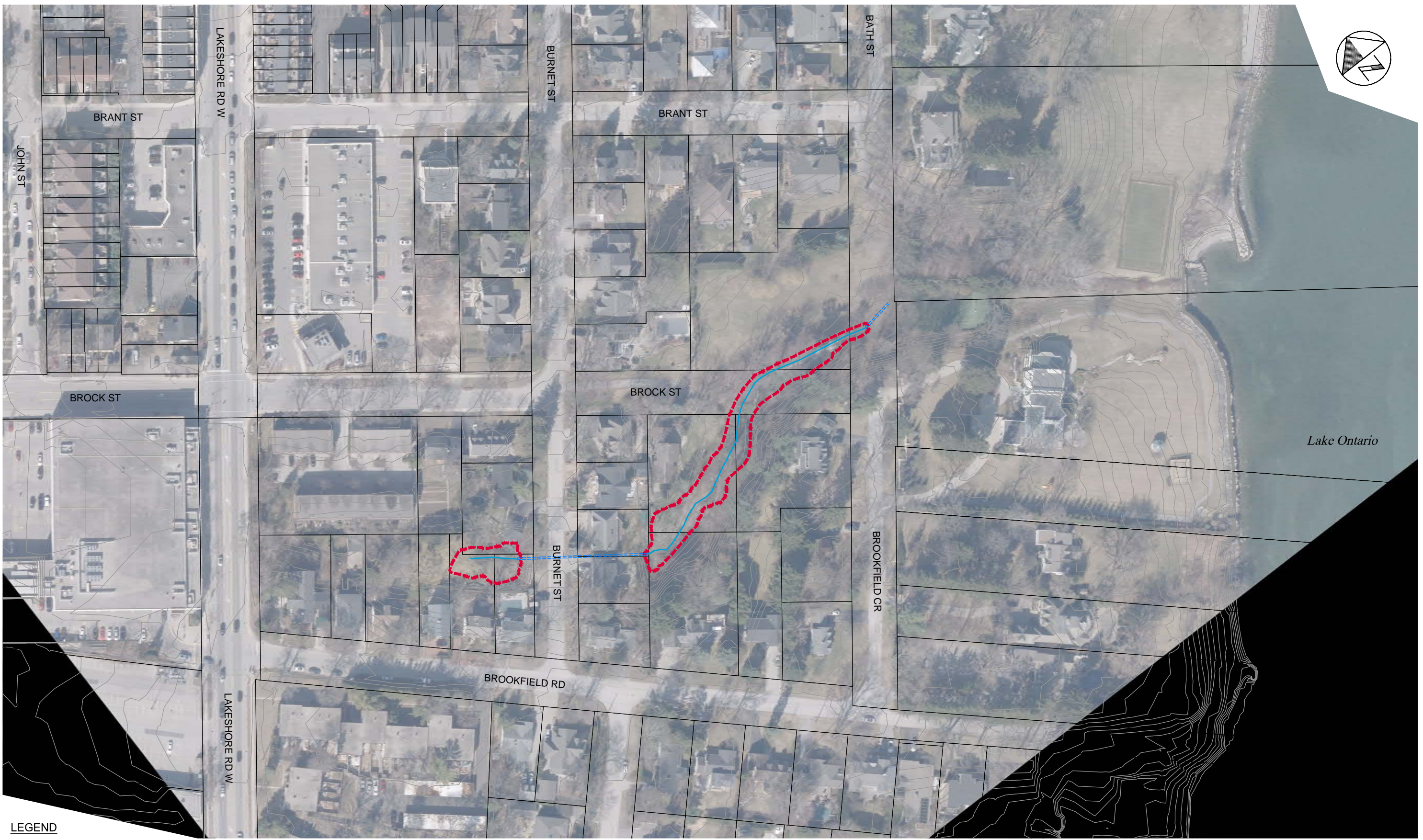
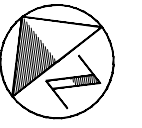


SCALE VALID ONLY FOR
 24"x36" VERSION

Scale 1:1000
 0 10 20 40

Consultant File No.
 TP115045






Figure No.
 RC-FL-8



Path: P:\Work\TP115045\Water\Draw\2019-09 (SWM)\Fig-RC-FlowLimits.dwg

Plotted By: richard.bartolo
Last Saved By: richard.bartolo
2019-09-05
Last Saved: 2019-09-05

LEGEND

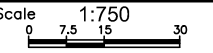
-  PROPERTY LINE
-  CONTOUR (0.5m)
-  REMNANT CHANNEL
-  UNDERGROUND CONVEYANCE
-  REMNANT CHANNEL FLOW LIMIT

OAKVILLE STORM SEWER
 MASTER PLAN
 PHASE II
 TOWN OF OAKVILLE

100 YEAR STORM EVENT
 REMNANT CHANNEL
 FLOW LIMITS
 (EXISTING CONDITIONS)



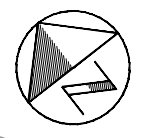
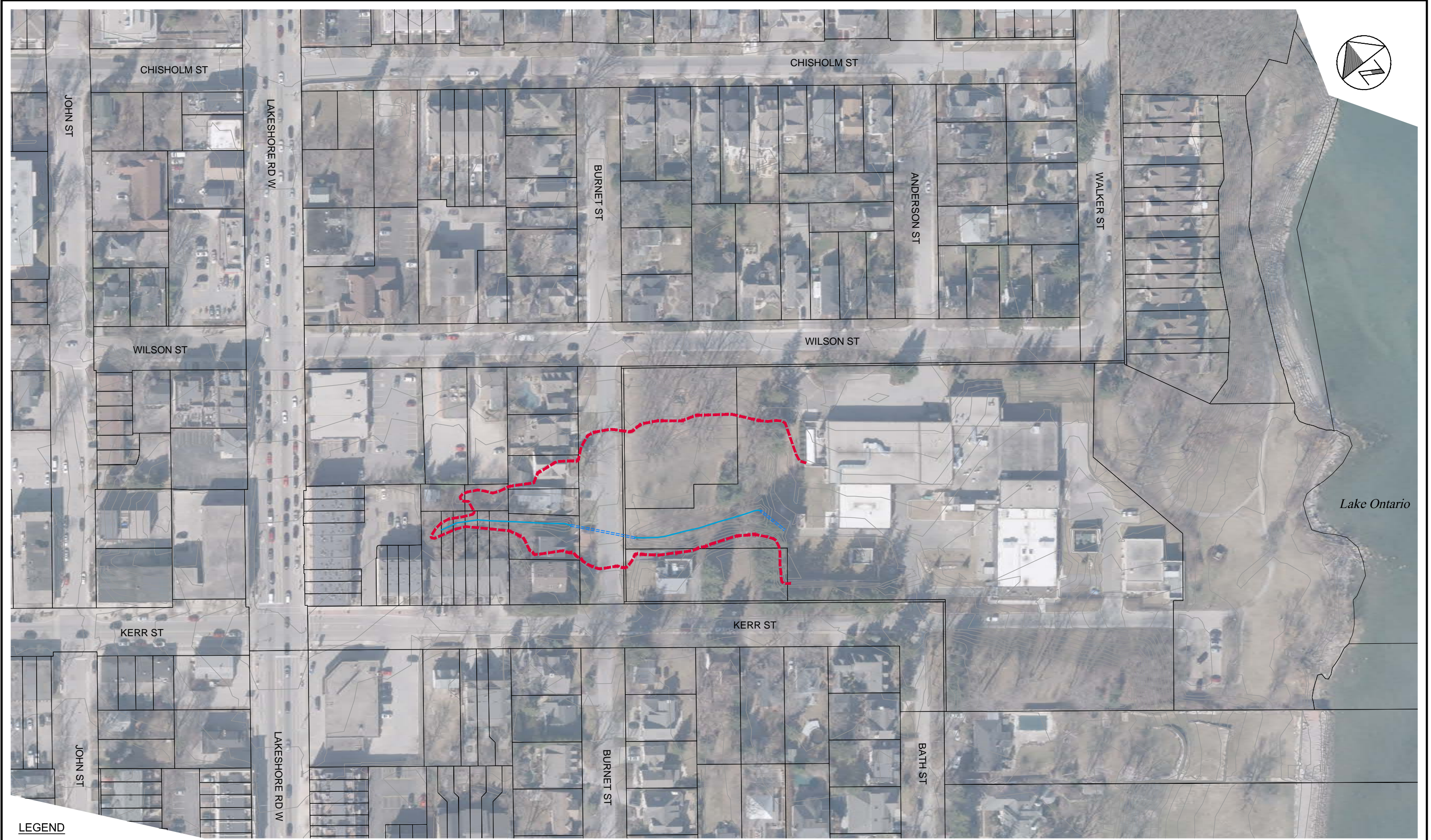
SCALE VALID ONLY FOR 24"x36" VERSION








Scale 1:750
Consultant File No. TP115045

Figure No. RC-FL-9

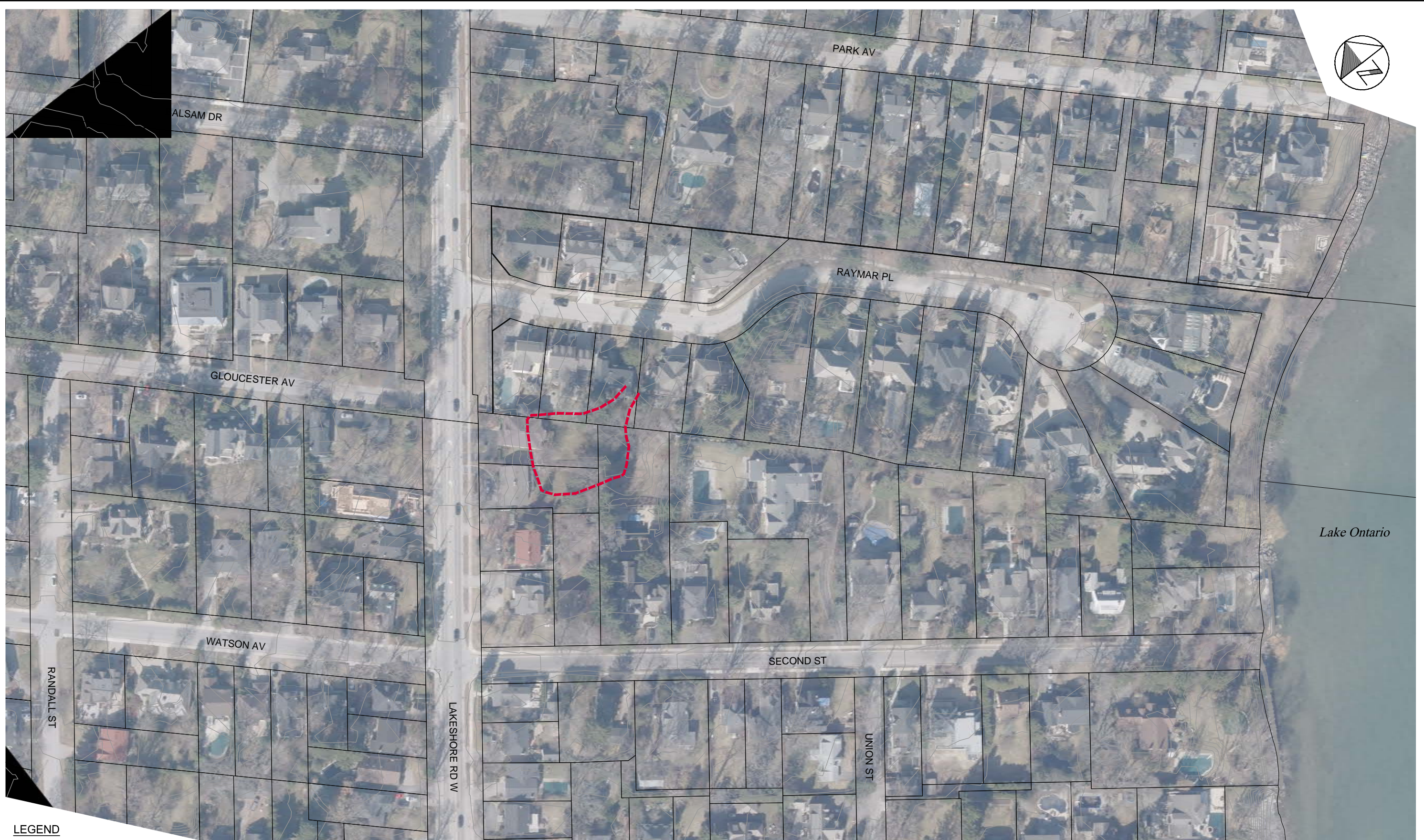
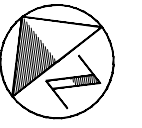
Plotted By: richard.bartolo
 Last Saved By: richard.bartolo
 Path: P:\Work\TP115045\Water\DWG\2019-09 (SWM)\Fig-RC-FlowLimits.dwg
 2019-09-05
 Last Saved: 2019-09-05



LEGEND






-  PROPERTY LINE
-  CONTOUR (0.5m)
-  REMNANT CHANNEL
-  UNDERGROUND CONVEYANCE
-  REMNANT CHANNEL FLOW LIMIT

<p>OAKVILLE STORM SEWER MASTER PLAN PHASE II TOWN OF OAKVILLE</p>	<p>100 YEAR STORM EVENT REMNANT CHANNEL FLOW LIMITS (EXISTING CONDITIONS)</p>	<p>wood.</p>	<p>SCALE VALID ONLY FOR 24"x36" VERSION</p> <p>Scale 1:750 0 7.5 15 30</p> <p>Consultant File No. TP115045</p> <p>Figure No. RC-FL-10</p>
---	---	---------------------	---



Plotted: 2019-09-05
Last Saved: 2019-09-05
Path: P:\Work\TP115045\Water\DWG\2019-09 (SWM)\Fig RC-FlowLimits.dwg
Plotted By: richard.bartolo
Last Saved By: richard.bartolo

LEGEND

-  PROPERTY LINE
-  CONTOUR (0.5m)
-  REMNANT CHANNEL
-  UNDERGROUND CONVEYANCE
-  REMNANT CHANNEL FLOW LIMIT

SCALE VALID ONLY FOR 24"x36" VERSION

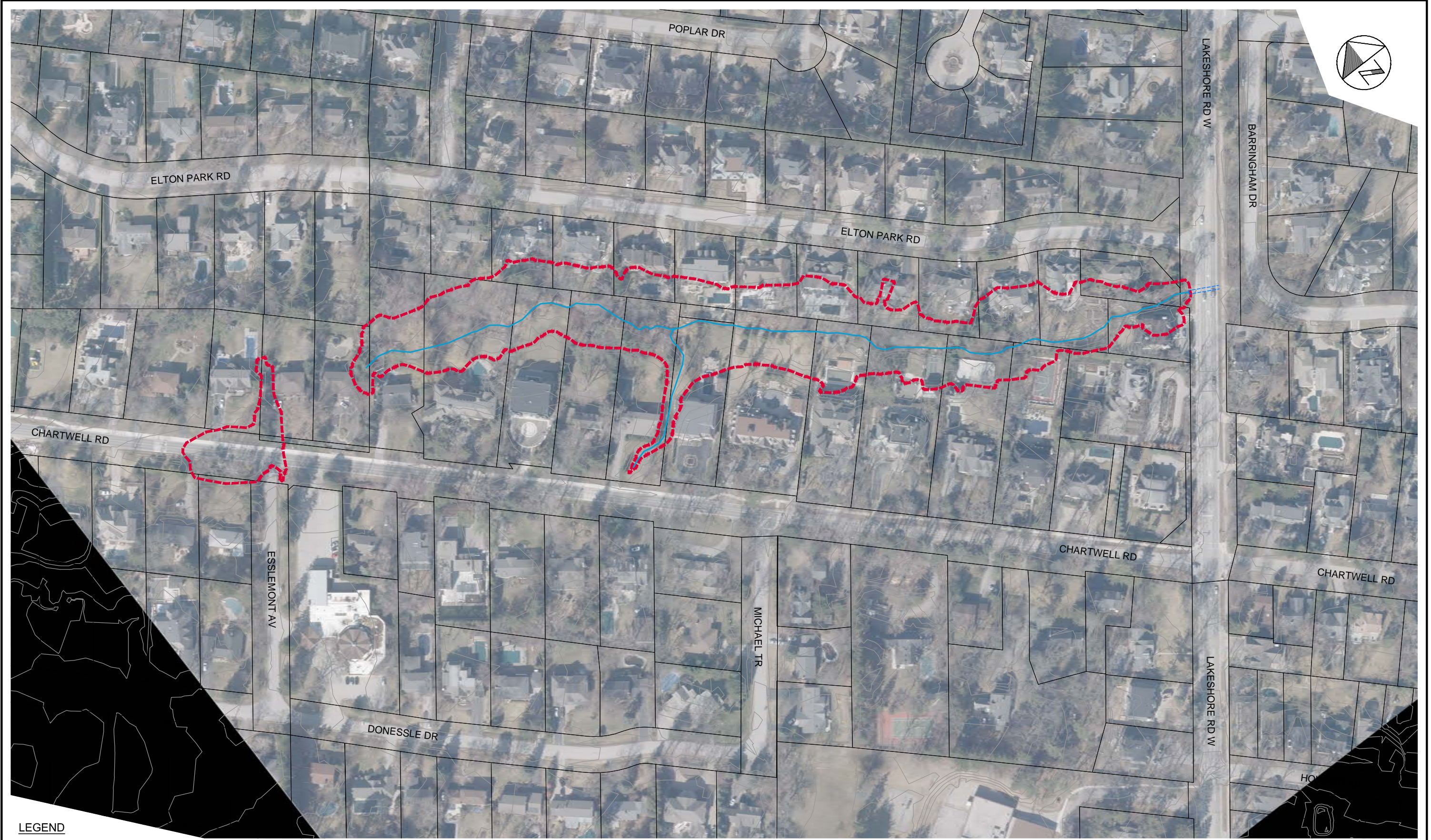
OAKVILLE STORM SEWER
MASTER PLAN
PHASE II
TOWN OF OAKVILLE

100 YEAR STORM EVENT
REMNANT CHANNEL
FLOW LIMITS
(EXISTING CONDITIONS)








Scale	1:750
	0 7.5 15 30
Consultant File No.	TP115045
Figure No.	RC-FL-11

Plotted By: richard.bartolo
Last Saved By: richard.bartolo
2019-09-05
2019-09-05
Path: P:\Work\TP115045\Water\Draw\2019-09 (SWM)\Fig RC-FlowLimits.dwg



LEGEND

-  PROPERTY LINE
-  CONTOUR (0.5m)
-  REMNANT CHANNEL
-  UNDERGROUND CONVEYANCE
-  REMNANT CHANNEL FLOW LIMIT

OAKVILLE STORM SEWER
MASTER PLAN
PHASE II
TOWN OF OAKVILLE

100 YEAR STORM EVENT
REMNANT CHANNEL
FLOW LIMITS
(EXISTING CONDITIONS)



SCALE VALID ONLY FOR
24"x36" VERSION

Scale 1:1000
0 10 20 40

Consultant File No.
TP115045

Figure No.
RC-FL-12

Plotted: 2019-09-05
Last Saved: 2019-09-05
Plotted By: richard.bartolo
Last Saved By: richard.bartolo
Path: P:\Work\TP115045\Water\Draw\2019-09 (SWM)\Fig RC-FlowLimits.dwg



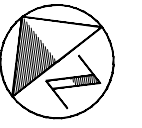
LEGEND	
	PROPERTY LINE
	CONTOUR (0.5m)
	REMNANT CHANNEL
	UNDERGROUND CONVEYANCE
	REMNANT CHANNEL FLOW LIMIT

OAKVILLE STORM SEWER
MASTER PLAN
PHASE II
TOWN OF OAKVILLE

100 YEAR STORM EVENT
REMNANT CHANNEL
FLOW LIMITS
(EXISTING CONDITIONS)








SCALE VALID ONLY FOR 24"x36" VERSION	
Scale	1:750
	0 7.5 15 30
Consultant File No.	TP115045
Figure No.	RC-FL-13/14



Plotted: 2019-09-05
Last Saved: 2019-09-05
Plotted By: richard.bartolo
Last Saved By: richard.bartolo
Path: P:\Work\TP115045\Water\Draw\2019-09 (SWM)\Fig RC-FlowLimits.dwg

LEGEND

-  PROPERTY LINE
-  CONTOUR (0.5m)
-  REMNANT CHANNEL
-  UNDERGROUND CONVEYANCE
-  REMNANT CHANNEL FLOW LIMIT

OAKVILLE STORM SEWER
MASTER PLAN
PHASE II
TOWN OF OAKVILLE

100 YEAR STORM EVENT
REMNANT CHANNEL
FLOW LIMITS
(EXISTING CONDITIONS)

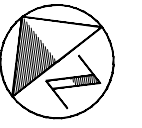


SCALE VALID ONLY FOR
24"x36" VERSION

Scale 1:750
0 7.5 15 30






Consultant File No.
TP115045

Figure No.
RC-FL-15



Plotted By: richard.bartolo
Last Saved By: richard.bartolo
2019-09-05
2019-09-05
Path: P:\Work\TP115045\Water\Draw\2019-09 (SWM)\Fig RC-FlowLimits.dwg

LEGEND

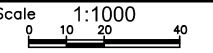
-  PROPERTY LINE
-  CONTOUR (0.5m)
-  REMNANT CHANNEL
-  UNDERGROUND CONVEYANCE
-  REMNANT CHANNEL FLOW LIMIT

**OAKVILLE STORM SEWER
MASTER PLAN
PHASE II
TOWN OF OAKVILLE**

**100 YEAR STORM EVENT
REMNANT CHANNEL
FLOW LIMITS
(EXISTING CONDITIONS)**



SCALE VALID ONLY FOR
24"x36" VERSION



Consultant File No.
TP115045

Figure No.
RC-FL-16

Table K1 - Remnant Channel Alternative Assessment

Network	Remnant Channel ID	Capture in Adjacent Network	Offline Storage/Optimize Outlet	Increase Pipe Size (Online)	Reprofiling/Regrading	Future Study	Comments
10	1			X	X	X	Increase size of West Street culverts; increase size of downstream sewer; regrade channel cross section through cemetery to contain 100 year flow
14	2		X	X	X	X	Online storage/increase pipes recommended to mitigate major/minor system flooding; increase size of pipe at outlet of remnant channel to be considered; regrade channel cross section through trail system
24	3	X		X	X	X	Majority of remedial works would be located on private properties. The Maplehurst Avenue storm sewer has been assessed to capture (divert) a portion of the flow to the Rebecca Street storm sewer
17	4	X					Mitigation plan specified in Coronation Park Class EA and Lakeshore Road EA; a diversion has been proposed on Lakeshore Road to outlet at the remnant channel at the intersection of Westminster Drive and Lakeshore Road
19	5	X		X	X	X	Possible to capture in proposed diversion storm sewer on Woodhaven Park Dr (minor system to be installed); increase size of online pipes, although all are on private property; limited opportunity for regrading cross section
28	6			X	X	X	Increase size of Sybella Drive culverts; remedial regrading/reprofiling primarily on private properties; future study required to determine impact of driveway culvert
29	7				X	X	Majority of remedial works would be located on private properties
29	8		X	X	X		Mitigation plan specified in Lakeshore Road EA.
30	9			X	X	X	Increase culvert size at Burnet Street; remedial works would be located on private properties
33	10		X	X	X	X	Offline storage recommended in Burnet Park to mitigate flooding to Water Purification Plant; increase storm sewers sizes through Water Treatment Plant; reprofile channel through park
39	11	X		X	X	X	Increase storm sewer sizes on Raymar Place and divert flow to Raymar Place; remedial works would be located on private properties, verify outlet of existing storm sewer.
39	12			X	X	X	No available capacity in receiving storm sewer network; remedial works would be located on private properties
LMC	13		X		X	X	Potential for storage in adjacent parks; downstream end of channel is a regulated water course
LMC	14			X	X	X	Increase receiving pipe size; remedial works would be located on private properties
45	15			X	X	X	Increase size of receiving storm sewer network; remedial works primarily on Regional property
46	16			X	X	X	Increase size of receiving storm sewer network; remedial works primarily on private property