

**Legend**

- Network
- Parcels
- Roads
- Streams

**Affected Private Properties By Network**

- Lower Risk Exposure
- Low - Moderate Risk Exposure
- Moderate Risk Exposure
- Higher Risk Exposure

**Stormwater Management  
Master Plan**

**Phase 2**

**Town of Oakville**

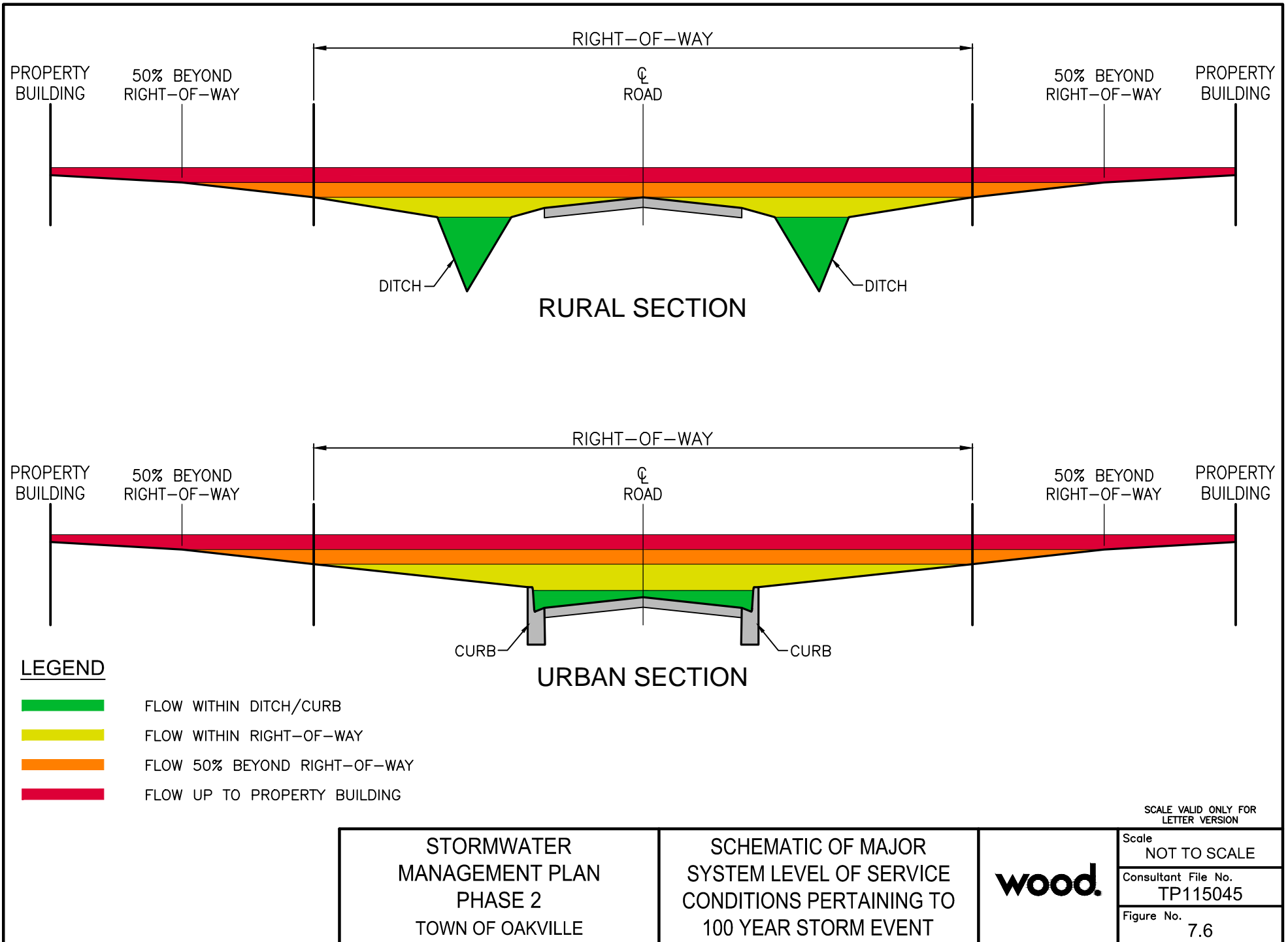
**Risk of Exposure for  
the Minor System to  
Surcharge to  
Basement Elevation  
for the  
100 Year Storm Event**



Scale **1:17,000**

Project No.  
**TP 115045**

Drawing No.  
**7.5**



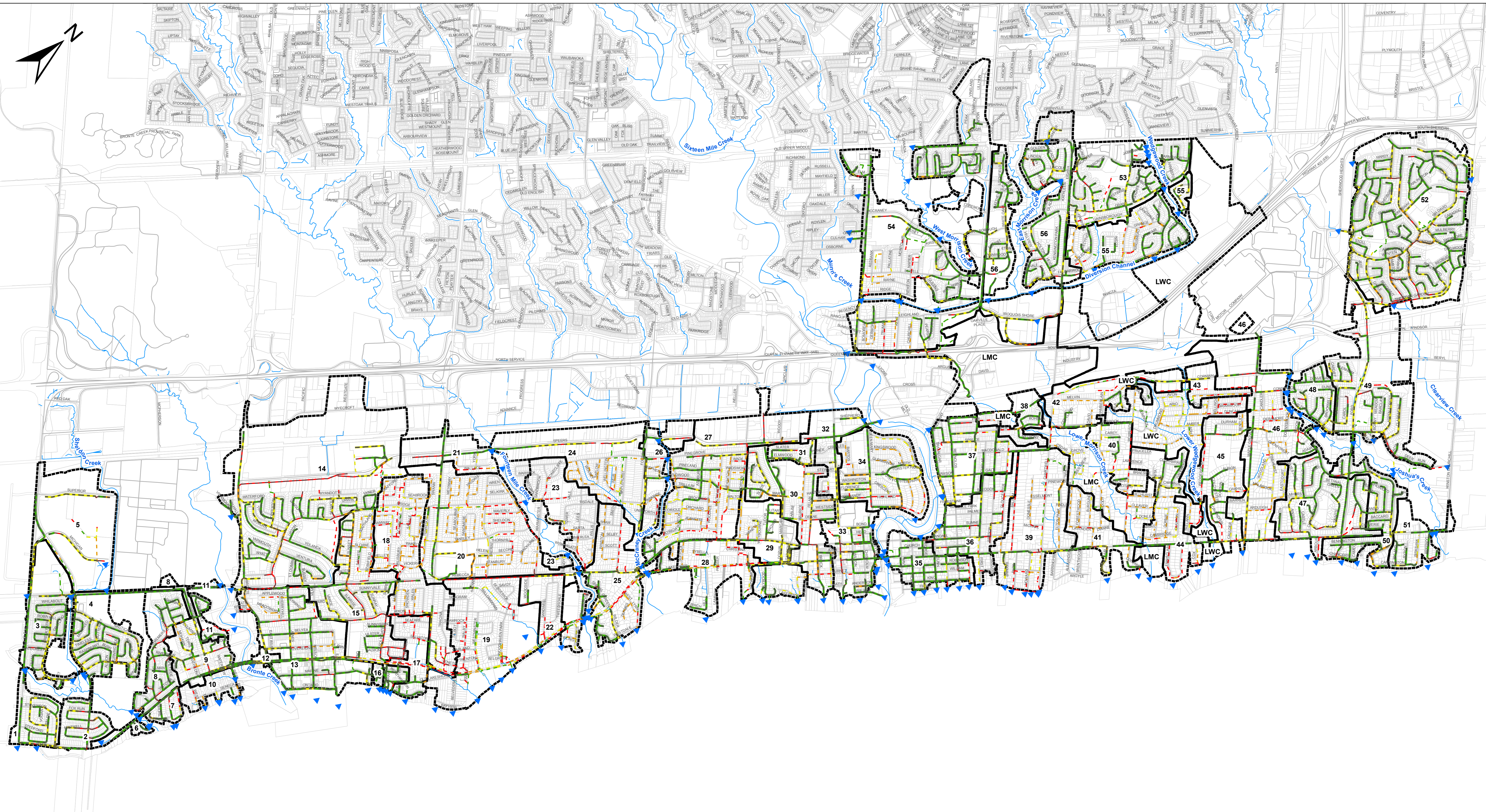
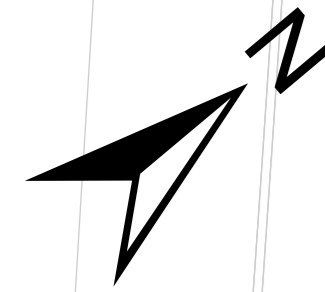
SCALE VALID ONLY FOR LETTER VERSION

STORMWATER  
 MANAGEMENT PLAN  
 PHASE 2  
 TOWN OF OAKVILLE

SCHEMATIC OF MAJOR  
 SYSTEM LEVEL OF SERVICE  
 CONDITIONS PERTAINING TO  
 100 YEAR STORM EVENT



Scale	NOT TO SCALE
Consultant File No.	TP115045
Figure No.	7.6



Legend		Major System Performance	
	Network		Flow Contained Within Ditch
	Parcels		Flow Contained Within Curb
	Roads		Flow Above Ditch But Contained Within ROW
	Streams		Flow Beyond ROW (Greater Than 50% to Building) - Ditches
	Culverts		Flow Beyond ROW (Greater Than 50% to Building) - Curbed
	Outfalls		
			Flow Beyond ROW (Less Than 50% to Building) - Ditches
			Flow Beyond ROW (Less Than 50% to Building) - Curbed

**Stormwater Management  
Master Plan**

**Phase 2**

**Town of Oakville**

**100 Year Storm Event  
Major System  
Performance Assessment  
-  
Existing Condition**



Scale **1:17,000**

0 250 500 1,000 1,500 Meters

Project No.  
**TP 115045**

Drawing No.  
**7.7**