

**Legend**

- Networks
- Roads
- Streams

**Combined Level of Service (LOS) - Recommended Works**

- A: Lower Risk Exposure
- B: Low - Moderate Risk Exposure
- C: Moderate Risk Exposure
- D: Higher Risk Exposure

**Stormwater Management  
Master Plan**

**Phase 2**

**Town of Oakville**

**Recommended  
Works  
Combined  
Level of Service**



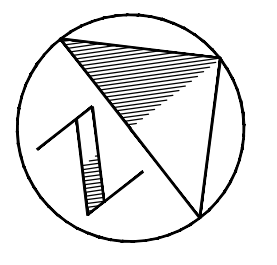
Scale **1:17,000**

0 250 500 1,000 1,500 Meters

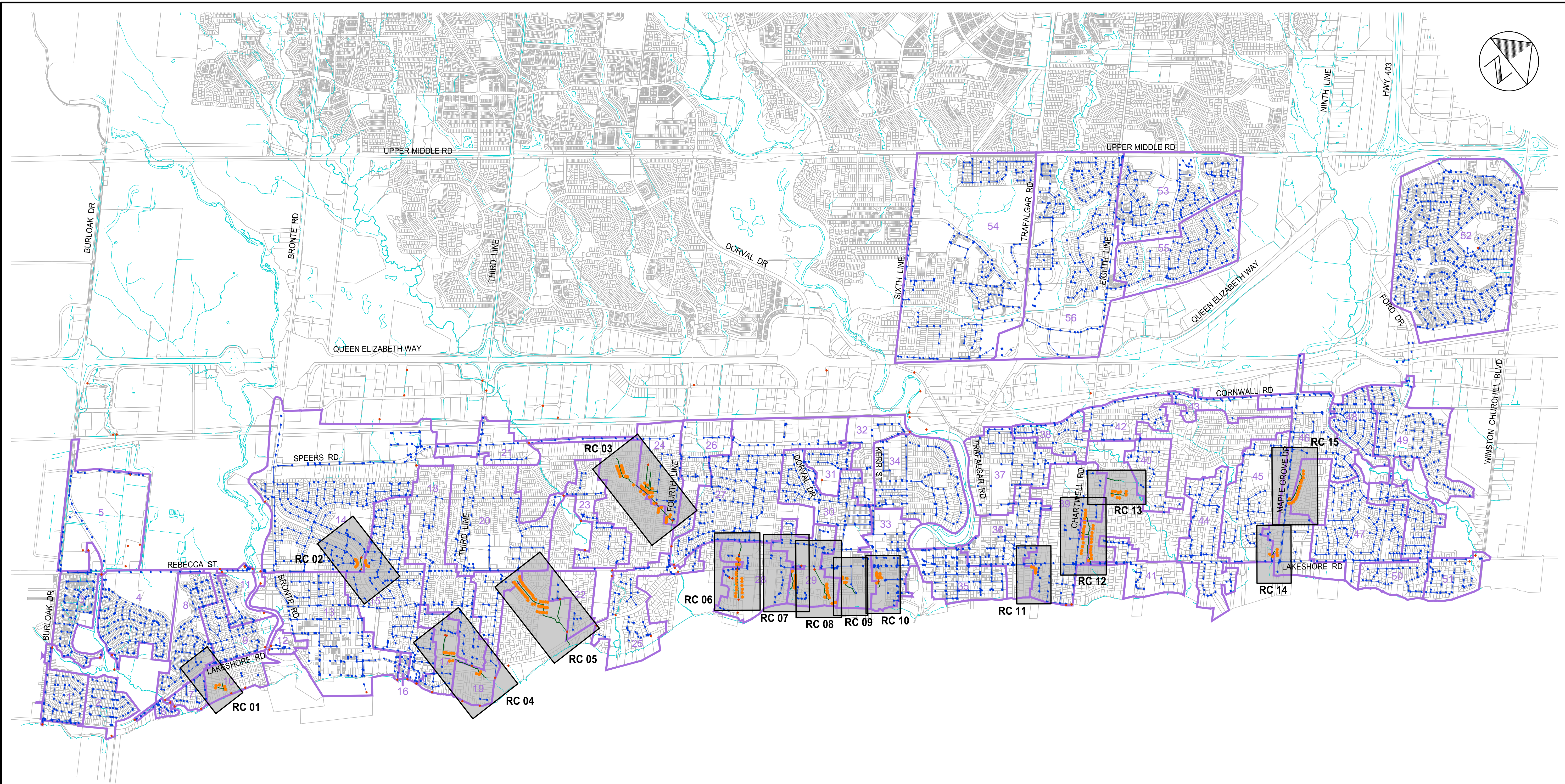
Project No.  
**TP 115045**

Drawing No.  
**8.3**





Plotted: 2019-09-05  
Last Saved: 2019-09-05  
Plotter: richard.bortolo  
Last Saved By: richard.bortolo  
Path: P:\Work\TP115045\Water\_Dwg\2019-09-09 (SWM)\Dwg Prop\FurtherAssm.dwg



**LEGEND**

	WATERCOURSE
	PROPERTY BOUNDARY
	SEWERSHED BOUNDARY
	SEWERSHED IDENTIFICATION NUMBER
	STORM SEWER
	MANHOLE
	SURVEYED OUTFALL
	REMNANT CHANNEL LOCATION
	FURTHER ASSESSMENT REQUIRED
	REMNANT CHANNEL AREA AND FIGURE No.

OAKVILLE STORM SEWER  
MASTER PLAN  
PHASE II  
TOWN OF OAKVILLE

100 YEAR STORM EVENT  
REMNANT CHANNEL  
PROPERTIES FOR FURTHER ASSESSMENT  
(EXISTING CONDITIONS)



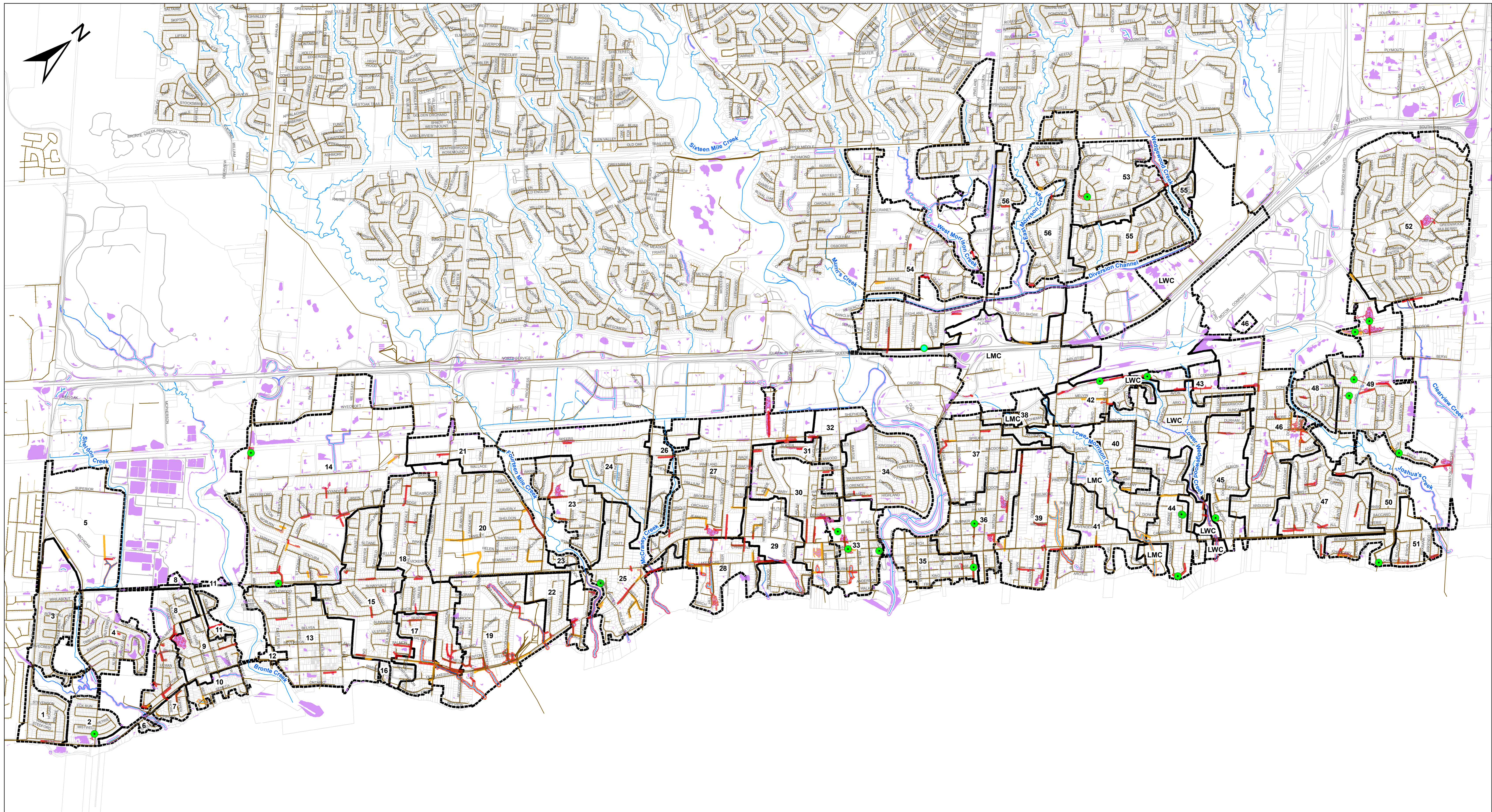
SCALE VALID ONLY FOR  
24"x36" VERSION

Scale 1 : 20000  
0 200 400 800













Consultant File No.  
TP115045

Drawing No.  
8.4





**Legend**

-  Network
-  Parcels
-  Roads
-  Streams
-  Sanitary Sewer Main
-  Sanitary Sewer Service Lateral
-  Depression Area
-  Major System - Moderate Risk
-  Major System - High Risk
-  Depression Area - Moderate Risk
-  Depression Area - High Risk
-  Potential High Capacity Catch Basin Locations

**Stormwater Management  
Master Plan**

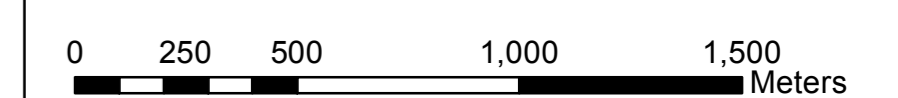
**Phase 2**

**Town of Oakville**

**Major System Low  
Point Area Mapping  
with High Capacity  
Catch Basin  
Locations**



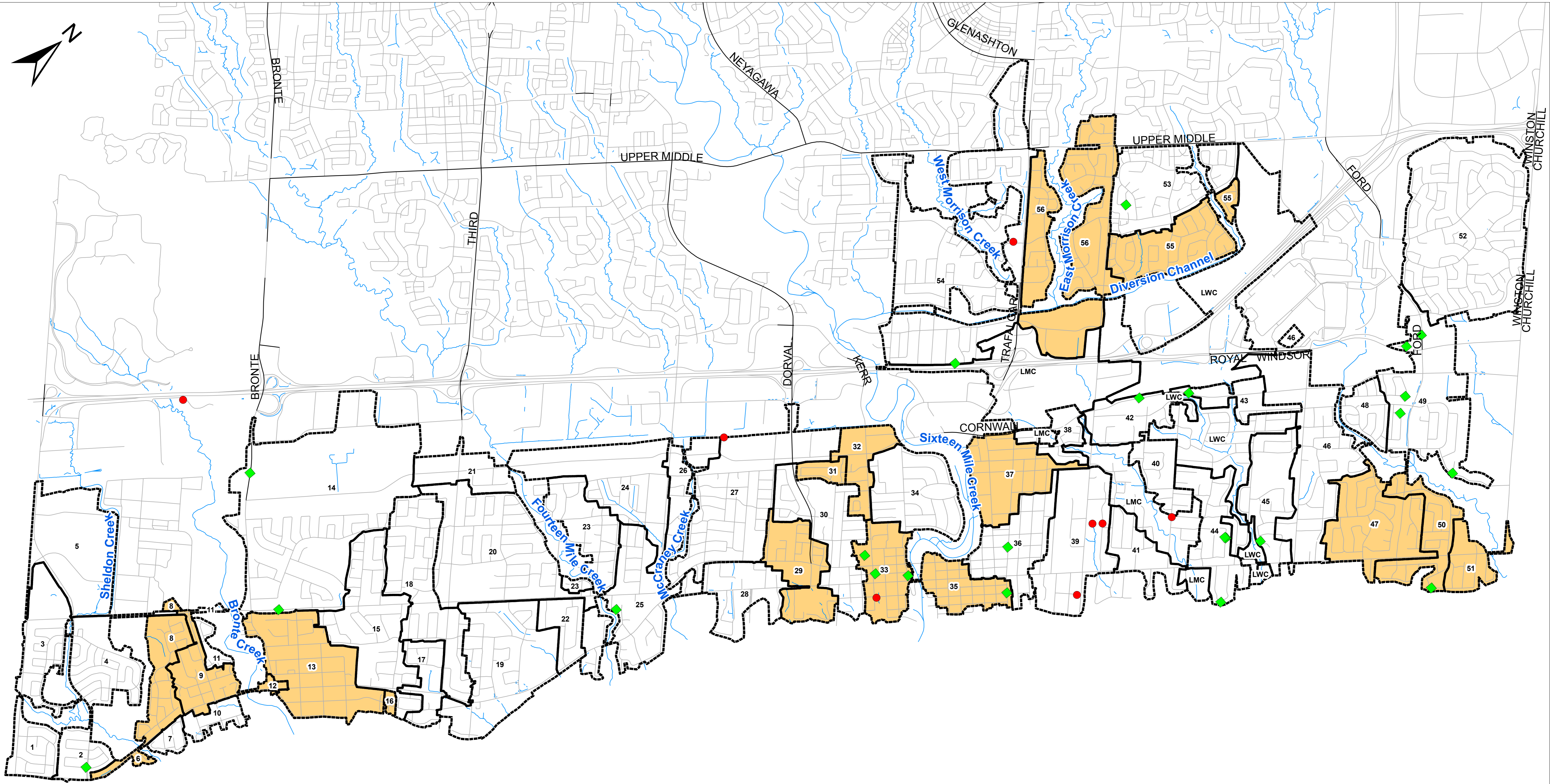
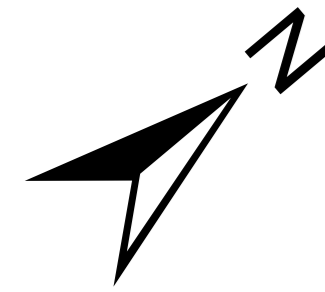
Scale **1:17,000**



Project No.  
**TP 115045**

Drawing No.  
**8.5**





**Legend**

- Inlet Improvements
  - ◆ Potential Higher Capacity Catch Basins
  - Proposed ICD Networks
- ICD = Inlet Control Device  
(restricted flow to storm sewers)

**Stormwater Management  
Master Plan**

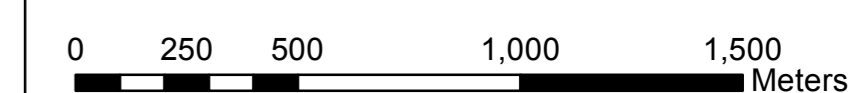
**Phase 2**

**Town of Oakville**

**Minor Capital  
Upgrades**



Scale **1:17,000**



Project No.  
**TP 115045**

Drawing No.  
**8.6**