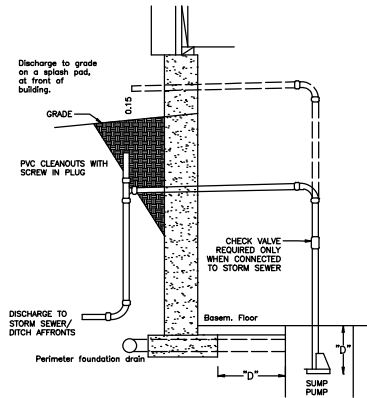
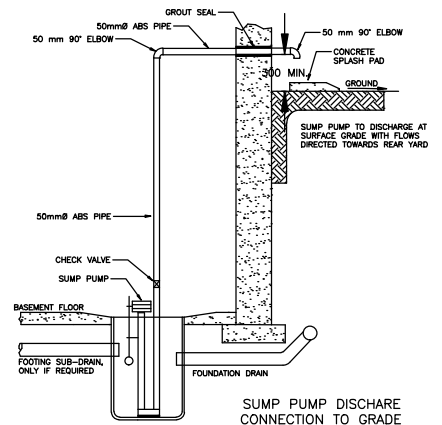


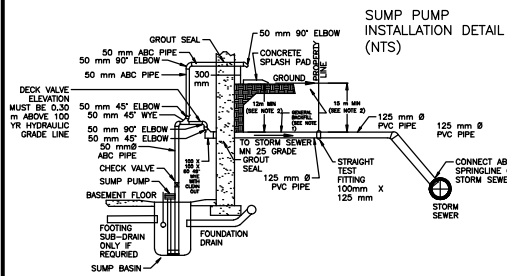
SUMP PUMP DETAIL



NOTES:
 SUMP PIT TO BE LOCATED DIST. "D" FROM THE EDGE OF ALL FOOTINGS (TYP.).
 SUMP PIT BASE TO BE CONTINUOUS WITH (OR BE MECHANICALLY CONNECTED TO) THE PIT WALLS.

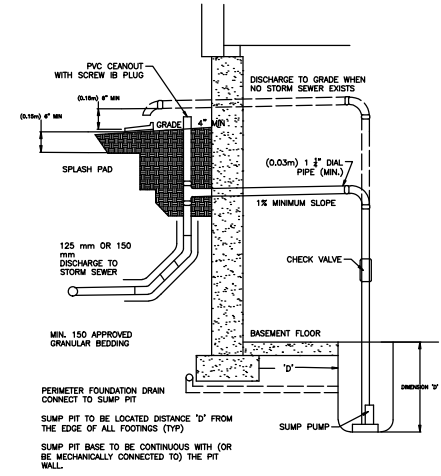


SUMP PUMP DISCHARGE CONNECTION TO GRADE
 N.T.S.



NOTES:
 1) GENERAL BACKFILL TO BE SELECT NATIVE BACKFILL MATERIAL.
 2) INSULATION TO BE REQUIRED WHEN MINIMUM COVER IS NOT ACHIEVABLE.

SUMP PUMP INSTALLATION DETAIL



Note: The Sump Pump Details shown on this drawing are examples that are acceptable by the Town of Oakville. They are to be used as a reference. The designer shall provide a detail that best describe their proposed design.

Standard Drawing Name ACCEPTABLE SAMPLE SUMP PUMP DETAILS	Revision: 0	Revision Date: MAR 2023
	Scale: NTS	Std. Dwg. Number: 1F
		OAKVILLE