

2014 Forest Health Report Cards

Town of Oakville
Urban Forest Health Monitoring Program

Forest Health Report Card

Warren Drive Park Woodland ID 2 (Zone 2)

Forest Health Rating (FHR)



- 1** Healthy with no obvious forest health issues
- 2** Moderately healthy, minor issues and <30% mortality
- 3** Health affected by obvious issues and >30% mortality



Woodland Summary

Overall, the woodland is healthy with no obvious issues affecting the dominant tree canopy. Some ash tree mortality from emerald ash borer was recorded in the woodland. There were no biotic or abiotic disturbances recorded. Only one invasive plant was recorded in the woodlot, wild grape vine. Although this plant is native to this area, it can become invasive in its aggressive growth.

By Compartment:

Compartment # 9931: FHR = 1
Dominant species: Willow
Comments:

Compartment # 9928: FHR = 1
Dominant species: Black walnut
Comments:

Compartment #9921:
Drainage

Biotic and Abiotic Disturbances

- No disturbances present

Ash Status

Presence of ash decline and mortality due to emerald ash borer was recorded in each compartment.

Compartment	Decline	Mortality
9931		✓
9928		
9921	Drainage	Drainage



*Blank cells indicate that decline or mortality is not present in the compartment

*FHR = Forest Health Rating

Invasive Plant Cover



Wild grape vine



Forest Health Report Card

Forest Health Rating (FHR)

Cornwall Road Buffer

Woodland ID 9 (Zone 5)

- ✓ **1** Healthy with no obvious forest health issues
- 2** Moderately healthy, minor issues and <30% mortality
- 3** Health affected by obvious issues and >30% mortality



Woodland Summary

Overall, the woodland is healthy with no obvious issues affecting the dominant tree canopy. Ash mortality due to emerald ash borer was observed in the woodland. Japanese beetle was recorded feeding on willow. Abiotic disturbances include anthracnose, tar spot, and discoloration of pine needles. A total of 3 invasive plants were present with buckthorn recorded in all compartments. Garlic mustard and wild grape vine were also present in pockets.

By Compartment:

Compartment 8962: FHR = 1
 Dominant species: honey locust
 Comments: Japanese beetle affecting willow; anthracnose

Compartment 8961: FHR = 1
 Dominant species: Scots pine
 Comments: anthracnose on horsechestnut; tar spot on maple, discoloration of pine needles

Compartment 8964: FHR = 1
 Dominant species: trembling aspen

Compartment 8966: FHR = 1
 Dominant species: black walnut

Compartment 8967: FHR = 1
 Dominant species: Austrian pine

Compartment 8963:
 No access due to wet area

*FHR = Forest Health Rating

Biotic and Abiotic Disturbances

- Japanese beetle on willow
- Anthracnose
- Tar spot on maple
- Discolouration of pine needles

Ash Status

Presence of ash decline and mortality due to emerald ash borer was recorded in each compartment.

Compartment	Decline	Mortality
8962		✓
8961		
8966	✓	✓
8967		
8963	N/A	N/A



*Blank cells indicate that decline or mortality is not present in the compartment

Invasive Plant Cover



Buckthorn



Garlic mustard



Wild grape vine



Forest Health Report Card

Forest Health Rating (FHR)

Valleybrook Park

Woodland ID 20 (Zone 19)

- ✓ **1** Healthy with no obvious forest health issues
- 2** Moderately healthy, minor issues and <30% mortality
- 3** Health affected by obvious issues and >30% mortality



Woodland Summary

Overall, the woodland is healthy with no obvious issues affecting the dominant tree canopy. Ash decline and mortality due to emerald ash borer were observed in the woodland. Gypsy moth and tar spot were both recorded as disturbances in the woodland. A total of 4 invasive plants were present; buckthorn, garlic mustard, bindweed, purple loosestrife.

By Compartment:

Compartment 394: FHR = 1
 Dominant species: sumac species
 Comments: gypsy moth; tar spot

Compartment 393:
 Drainage

Biotic and Abiotic Disturbances

- Gypsy moth
- Tar spot

Ash Status

Presence of ash decline and mortality due to emerald ash borer was recorded in each compartment.

Compartment	Decline	Mortality
394	✓	✓
393	Drainage	Drainage



*Blank cells indicate that decline or mortality is not present in the compartment

*FHR = Forest Health Rating

Invasive Plant Cover



Buckthorn



Garlic mustard



Bindweed



Purple loosestrife



Forest Health Report Card

Forest Health Rating (FHR)



- 1 Healthy with no obvious forest health issues
- 2 Moderately healthy, minor issues and <30% mortality
- 3 Health affected by obvious issues and >30% mortality

East Joshua Creek Trail 1 Woodland ID 26 (Zone 19)



Woodland Summary

Overall, the woodland is healthy with no obvious issues affecting the dominant tree canopy. Ash mortality due to emerald ash borer was recorded in each compartment of the woodland. Biotic disturbances present in the woodlot included Dutch elm disease and gypsy moth. Storm damage was also recorded as an abiotic disturbance. A total of 5 invasive plants were present, with buckthorn, bindweed, and purple loosestrife being the most prevalent.

By Compartment:

Compartment 381:
Drainage

Compartment 382: FHR = 1
Dominant species: accolade elm
Comments: Dutch elm disease

Compartment 383: FHR = 1
Dominant species: white cedar
Comments: gypsy moth on basswood and oak

Compartment 384: FHR = 1
Dominant species: willow species
Comments: storm damage

Special Notes:

Forest health monitoring plots established in all compartments of the woodland.

*FHR = Forest Health Rating

Biotic and Abiotic Disturbances

- Dutch elm disease
- Gypsy moth affecting basswood and oak
- Storm damage

Ash Status

Presence of ash decline and mortality due to emerald ash borer was recorded in each compartment.

Compartment	Decline	Mortality
381	Drainage	Drainage
382		✓
383	✓	✓
384		✓



*Blank cells indicate that decline or mortality is not present in the compartment

Invasive Plant Cover



Buckthorn



Bindweed



Purple loosestrife



Garlic mustard



Phragmites



Forest Health Report Card

Sheridan Valley Park North

Woodland ID 36 (Zone 12)

Forest Health Rating (FHR)



- 1** Healthy with no obvious forest health issues
- 2** Moderately healthy, minor issues and <30% mortality
- 3** Health affected by obvious issues and >30% mortality



Woodland Summary

Overall, the woodland is healthy with no obvious issues affecting the dominant tree canopy. Ash decline and mortality due to emerald ash borer were observed in the woodland. No biotic disturbances were recorded. Abiotic disturbance in the woodland included storm damage. A total of 3 invasive plants were present, with buckthorn present in all forest compartments.

By Compartment:

Compartment 219:
Drainage

Compartment 220: FHR = 1
Dominant species: willow
Comments: storm damage

Compartment 221: FHR = 3
Dominant species: pear
Comments: buckthorn dominant understory

Compartment 222: FHR = 1
Dominant species: white pine
Comments: storm damage

Compartment 223: FHR = 2
Dominant species: white ash
Comments:

Compartment 224: FHR = 1
Dominant species: sugar maple

*FHR = Forest Health Rating

Biotic and Abiotic Disturbances

- List biotic disturbances
- List abiotic disturbances
- Or, "No disturbances present"

Ash Status

Presence of ash decline and mortality due to emerald ash borer was recorded in each compartment.

Compartment	Decline	Mortality
219	Drainage	Drainage
220	✓	
221	✓	✓
222		✓
223		✓



*Blank cells indicate that decline or mortality is not present in the compartment

Invasive Plant Cover



Buckthorn



Garlic mustard



Periwinkle



Forest Health Report Card

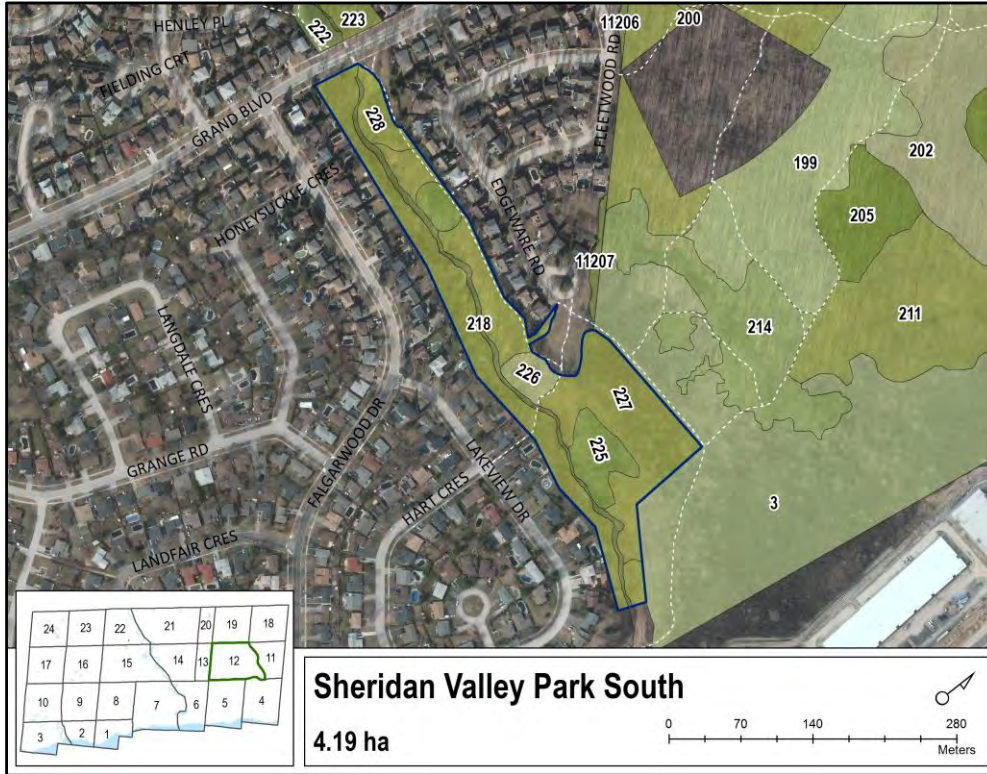
Sheridan Valley Park South

Woodland ID 37 (Zone 12)

Forest Health Rating (FHR)



- 1 Healthy with no obvious forest health issues
- 2 Moderately healthy, minor issues and <30% mortality
- 3 Health affected by obvious issues and >30% mortality



Woodland Summary

Overall, the woodland is healthy with no obvious issues affecting the dominant tree canopy. Ash decline and mortality due to emerald ash borer were observed in the woodland. Biotic disturbance of Dutch elm disease and gypsy moth were present. No abiotic disturbance was recorded. A total of 2 invasive plants were present, with buckthorn present in all forest compartments.

By Compartment:

Compartment 218:
Drainage

Compartment 225: FHR = 1
Dominant species: mixed oak

Compartment 226: FHR = 1
Dominant species: Ironwood
Comments: Dutch elm disease

Compartment 227: FHR = 1
Dominant species: sugar maple
Comments: gypsy moth; thick buckthorn in understory

Compartment 228: FHR = 3
Dominant species: mixed ash
Comments: thick buckthorn in understory

Biotic and Abiotic Disturbances

- Dutch elm disease
- Gypsy moth

Ash Status

Presence of ash decline and mortality due to emerald ash borer was recorded in each compartment.

Compartment	Decline	Mortality
218	Drainage	Drainage
225	✓	
226		
227	✓	✓
228		✓



*Blank cells indicate that decline or mortality is not present in the compartment

*FHR = Forest Health Rating

Invasive Plant Cover



Buckthorn



Garlic mustard



LALLEMAND PLANT CARE

Forest Health Report Card

Forest Health Rating (FHR)



- 1** Healthy with no obvious forest health issues
- 2** Moderately healthy, minor issues and <30% mortality
- 3** Health affected by obvious issues and >30% mortality

Iroquois Shoreline Wood

Woodland ID 39 (Zone 12)



Woodland Summary

Overall, the woodland is healthy with no obvious issues affecting the dominant tree canopy. Ash decline and mortality due to emerald ash borer was recorded. Gypsy moth was the most prevalent biotic disturbance present. A total of 3 invasive plants were present, with buckthorn and garlic mustard present in all forest compartments.

By Compartment:

Compartment 3: FHR = 1
Dominant species: hawthorn
Comments: dominated by buckthorn

Compartment 199: FHR = 1
Dominant species: sugar maple
Comments: anthracnose

Compartment 200: FHR = 1
Dominant species: mixed maple
Comments: gypsy moth; Dutch elm disease; black knot on cherry

Compartment 202: FHR = 1
Dominant species: mixed maple
Comments: gypsy moth

Compartment 205: FHR = 1
Dominant species: shagbark hickory

Compartment 211: FHR = 1
Dominant species: sugar maple
Comments: gypsy moth egg masses

Compartment 214: FHR = 1
Dominant species: sugar maple
Comments: gypsy moth egg masses

Special Notes:

Forest health monitoring plots established in all compartments
*FHR = Forest Health Rating

Biotic and Abiotic Disturbances

- Anthracnose
- Gypsy moth
- Dutch elm disease
- Black knot on cherry

Ash Status

Presence of ash decline and mortality due to emerald ash borer was recorded in each compartment.

Compartment	Decline	Mortality
3		✓
199		
200		
202	✓	✓
205		✓
211		✓
214		



*Blank cells indicate that decline or mortality is not present in the compartment

Invasive Plant Cover



Buckthorn



Garlic mustard



Purple loosestrife



Forest Health Report Card

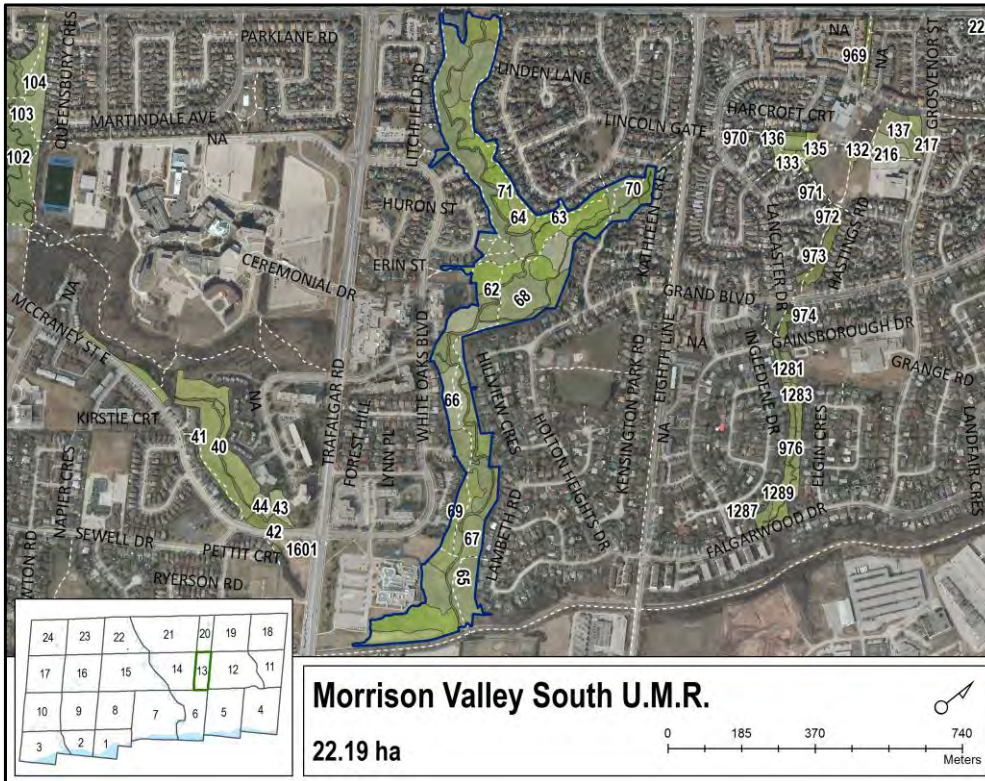
Forest Health Rating (FHR)

Morrison Valley South

U.M.R-Woodland ID 41 (Zone 7)



- 1** Healthy with no obvious forest health issues
- 2** Moderately healthy, minor issues and <30% mortality
- 3** Health affected by obvious issues and >30% mortality



Woodland Summary

Overall, the woodland is healthy with no obvious issues affecting the dominant tree canopy. Ash decline and mortality due to emerald ash borer were observed in the woodland. Both biotic and abiotic disturbances were recorded.

By Compartment:

Compartment 62:
Drainage

Compartment 63: FHR = 1
Dominant species: red oak
Comments: tar spot on maples

Compartment 64: FHR = 2
Dominant species: mixed ash
Comments: gypsy moth; red oak in decline

Compartment 65: FHR = 1
Dominant species: sugar maple
Comments: gypsy moth; Dutch elm disease; tar spot

Compartment 66: FHR = 1
Dominant species: sugar maple
Comments: harvested

Compartment 67: FHR = 1
Dominant species: sugar maple
Comments: Dutch elm disease

Compartment 68: FHR = 1
Dominant species: Ironwood
Comments: gypsy moth; Dutch elm disease; tar spot

Compartment 69: FHR = 1
Dominant species: mixed maple
Comments: tar spot

Compartment 70: FHR = 3
Dominant species: hawthorn

Compartment 71: FHR = 1
Dominant species: sugar maple

*FHR = Forest Health Rating

Biotic and Abiotic Disturbances

- Tar spot on maples
- Gypsy moth
- Dutch elm disease

Ash Status

Presence of ash decline and mortality due to emerald ash borer was recorded in each compartment.

Compartment	Decline	Mortality
62	Drainage	Drainage
63	✓	✓
64	✓	✓
65		✓
66	✓	✓
67		✓
68		✓
69		✓
70	✓	✓
71		✓



*Blank cells indicate that decline or mortality is not present in the compartment

Invasive Plant Cover



Buckthorn



Garlic mustard



Periwinkle



Forest Health Report Card

Forest Health Rating (FHR)

Oakville Woods

Woodland ID 42 (Zone 14)



- 1 Healthy with no obvious forest health issues
- 2 Moderately healthy, minor issues and <30% mortality
- 3 Health affected by obvious issues and >30% mortality



Woodland Summary

Overall, the woodland is healthy with no obvious issues affecting the dominant tree canopy. Ash decline and mortality due to emerald ash borer was observed in the woodland. No biotic disturbance was recorded. Abiotic disturbance in the woodland included storm damage. A total of 2 invasive plants were present, with buckthorn present in all forest compartments.

By Compartment:

Compartment 102:
Drainage

Compartment 103: FHR = 1
Dominant species: white ash
Comments: storm damage

Compartment 104: FHR = 1
Dominant species: beech

Compartment 105: FHR = 2
Dominant species: apple
Comments: storm damage

Compartment 106: FHR = 3
Dominant species: white oak

Biotic and Abiotic Disturbances

- Storm damage

Ash Status

Presence of ash decline and mortality due to emerald ash borer was recorded in each compartment.

Compartment	Decline	Mortality
102	Drainage	Drainage
103	✓	✓
104		✓
105	✓	✓
106		✓



*Blank cells indicate that decline or mortality is not present in the compartment

*FHR = Forest Health Rating

Invasive Plant Cover



Buckthorn



Garlic mustard



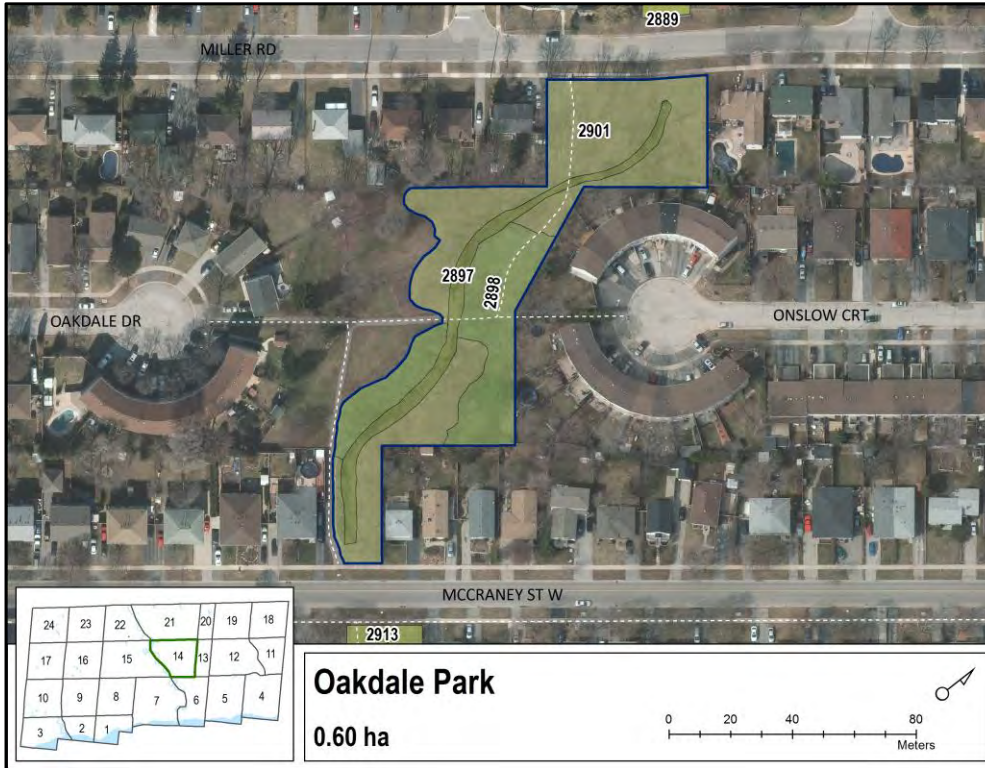
Forest Health Report Card

Oakdale Park

Woodland ID 44 (Zone 14)

Forest Health Rating (FHR)

- ✓ **1** Healthy with no obvious forest health issues
- 2** Moderately healthy, minor issues and <30% mortality
- 3** Health affected by obvious issues and >30% mortality



Woodland Summary

Overall, the woodland is healthy with no obvious issues affecting the dominant tree canopy. Ash decline and mortality due to emerald ash borer were observed in the woodland. No biotic disturbances were recorded. Abiotic disturbance was present as storm damage in compartment 2898. A total of 3 invasive plants were present, with garlic mustard present in all forest compartments.

By Compartment:

Compartment 2897:
Drainage

Compartment 2898: FHR = 1
Dominant species: Apple species
Comments: storm damage

Compartment 2901: FHR = 1
Dominant species: willow

Special Notes:

Forest health monitoring plots established in all compartments of the woodland.

Biotic and Abiotic Disturbances

- Storm damage

Ash Status

Presence of ash decline and mortality due to emerald ash borer was recorded in each compartment.

Compartment	Decline	Mortality
2897	Drainage	Drainage
2898	✓	
2901	✓	✓



*Blank cells indicate that decline or mortality is not present in the compartment

*FHR = Forest Health Rating

Invasive Plant Cover



Buckthorn



Garlic mustard



Periwinkle



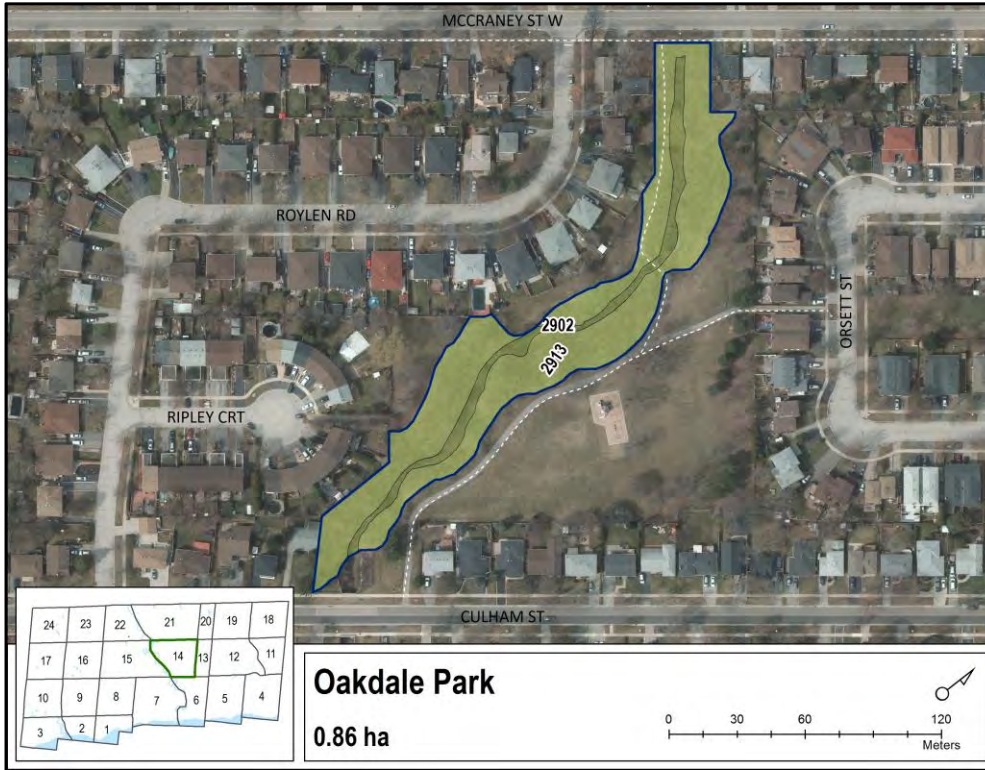
Forest Health Report Card

Oakdale Park

Woodland ID 45 (Zone 14)

Forest Health Rating (FHR)

- ✓ **1** Healthy with no obvious forest health issues
- 2** Moderately healthy, minor issues and <30% mortality
- 3** Health affected by obvious issues and >30% mortality



Woodland Summary

Overall, the woodland is healthy with no obvious issues affecting the dominant tree canopy. Ash mortality due to emerald ash borer was observed in the woodland. Both biotic and abiotic disturbances were recorded as tar spot and storm damage. A total of 3 invasive plants were present, buckthorn, garlic mustard, and periwinkle.

By Compartment:

Compartment 2902:
Drainage

Compartment 2913: FHR = 1
Dominant species: Willow
Comments: tar spot on maples;
storm damage

Biotic and Abiotic Disturbances

- Tar spot on maples
- Storm damage

Ash Status

Presence of ash decline and mortality due to emerald ash borer was recorded in each compartment.

Compartment	Decline	Mortality
2902	Drainage	Drainage
2913		✓



*Blank cells indicate that decline or mortality is not present in the compartment

*FHR = Forest Health Rating

Invasive Plant Cover



Buckthorn



Garlic mustard



Periwinkle



Forest Health Report Card

Avonhead Ridge Trail

South 2

Woodland ID 64 (Zone 11)

Forest Health Rating (FHR)



- 1 Healthy with no obvious forest health issues
- 2 Moderately healthy, minor issues and <30% mortality
- 3 Health affected by obvious issues and >30% mortality



Woodland Summary

Overall, the woodland is healthy with no obvious issues affecting the dominant tree canopy. Ash decline and mortality due to emerald ash borer was observed in the woodland. No biotic or abiotic disturbances were recorded. A total of 2 invasive plants were present, with buckthorn and garlic mustard present in all forest compartments.

By Compartment:

- Compartment 138: FHR = 1
Dominant species: white pine
- Compartment 140: FHR = 1
Dominant species: basswood
- Compartment 141: FHR = 1
Dominant species: silver maple
- Compartment 142: FHR = 3
Dominant species: black cherry
- Compartment 143: FHR = 1
Dominant species: black walnut

Special Notes:

Forest health monitoring plots established in all compartments of the woodland.

*FHR = Forest Health Rating

Biotic and Abiotic Disturbances

- No disturbances present

Ash Status

Presence of ash decline and mortality due to emerald ash borer was recorded in each compartment.

Compartment	Decline	Mortality
138		
140	✓	✓
141	✓	
142	✓	✓
143	✓	✓



*Blank cells indicate that decline or mortality is not present in the compartment

Invasive Plant Cover



Buckthorn



Garlic mustard



Forest Health Report Card

Avonhead Ridge Trail South 2 Woodland ID 65 (Zone 11)

Forest Health Rating (FHR)



- 1 Healthy with no obvious forest health issues
- 2 Moderately healthy, minor issues and <30% mortality
- 3 Health affected by obvious issues and >30% mortality



Woodland Summary

Overall, the woodland is healthy with no obvious issues affecting the dominant tree canopy. Biotic disturbance of Dutch elm disease was recorded in the woodland. No abiotic disturbances were reported. A total of 3 invasive plants were present, with buckthorn and garlic mustard present in all forest compartments.

By Compartment:

Compartment 648: FHR = 1
Dominant species: Norway spruce

Compartment 649: FHR = 1
Dominant species: Silver maple
Comments: Dutch elm disease

Compartment 650: FHR = 1
Dominant species: white oak
Comments: buckthorn is a major component of the compartment

Compartment 651: FHR = 1
Dominant species: white elm
Comments:

Special Notes:

Forest health monitoring plots established in all compartments of the woodland.

*FHR = Forest Health Rating

Biotic and Abiotic Disturbances

- Dutch elm disease

Ash Status

Presence of ash decline and mortality due to emerald ash borer was recorded in each compartment.

Compartment	Decline	Mortality
648		
649		
650		
651		



*Blank cells indicate that decline or mortality is not present in the compartment

Invasive Plant Cover



Buckthorn



Garlic mustard



Wild grape vine



Forest Health Report Card

Forest Health Rating (FHR)

Annapolis Park

Woodland ID 74 (Zone 4)



- 1** Healthy with no obvious forest health issues
- 2** Moderately healthy, minor issues and <30% mortality
- 3** Health affected by obvious issues and >30% mortality



Woodland Summary

Overall, the woodland is healthy with no obvious issues affecting the dominant tree canopy. Ash decline and mortality due to emerald ash borer were observed in the woodland. Minor biotic disturbance of tar spot was present. Abiotic disturbance in the woodland included blow down and harvesting. A total of 4 invasive plants were present, with buckthorn and garlic mustard present in all forest compartments.

By Compartment:

Compartment 7361: FHR = 1
 Dominant species: basswood
 Comments: blowdown

Compartment 7362: FHR = 2
 Dominant species: white ash
 Comments: harvested

Compartment 7363: FHR = 1
 Dominant species: Beech

Compartment 7364: FHR = 2
 Dominant species: Siberian elm
 Comments: tar spot

Compartment 7366: FHR = 1
 Dominant species: red oak

Biotic and Abiotic Disturbances

- Tar spot
- Blowdown
- Harvesting

Ash Status

Presence of ash decline and mortality due to emerald ash borer was recorded in each compartment.

Compartment	Decline	Mortality
7361		
7362	✓	✓
7363		✓
7364		
7366		



*Blank cells indicate that decline or mortality is not present in the compartment

*FHR = Forest Health Rating

Invasive Plant Cover



Buckthorn



Garlic mustard



Periwinkle



Wild grape vine



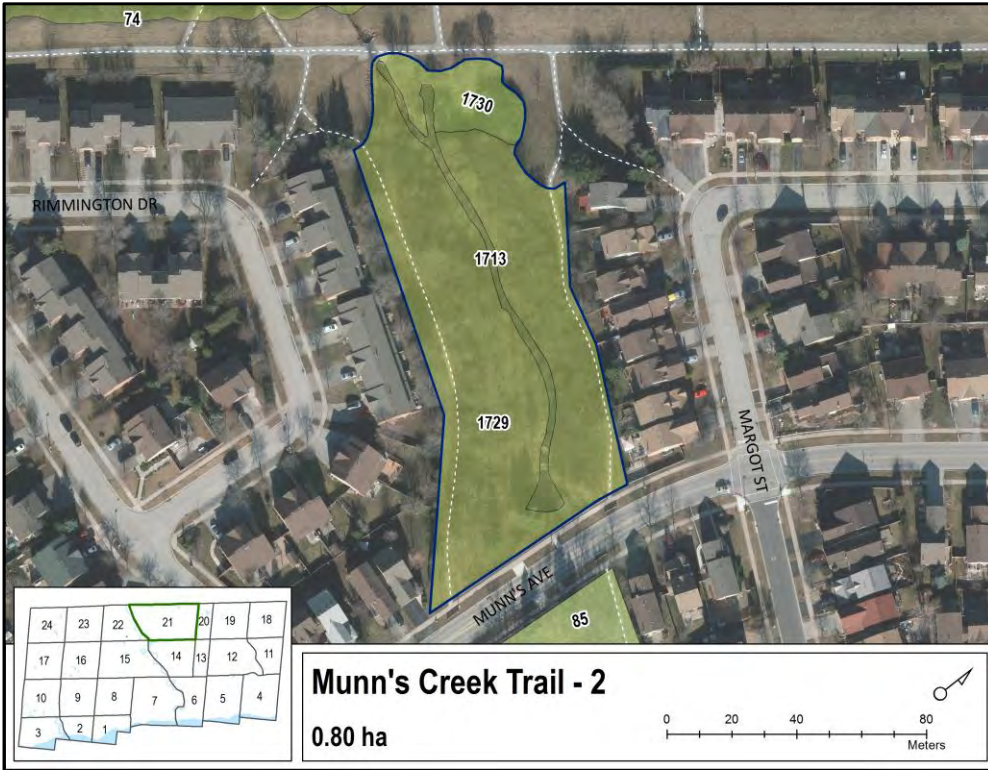
Forest Health Report Card

Munn's Creek Trail 2 Woodland ID 104 (Zone 21)

Forest Health Rating (FHR)



- 1 Healthy with no obvious forest health issues
- 2 Moderately healthy, minor issues and <30% mortality
- 3 Health affected by obvious issues and >30% mortality



Woodland Summary

Overall, the woodland is healthy with no obvious issues affecting the dominant tree canopy. Ash decline and mortality due to emerald ash borer were both observed in the woodland. Biotic disturbance of Dutch elm disease, leaf miner, aphids, and gypsy moth were recorded. No abiotic disturbances were present. A total of 3 invasive plants were present, with buckthorn present in all forest compartments.

By Compartment:

Compartment 1713:
Drainage

Compartment 1729: FHR = 1
Dominant species: black walnut
Comments: Dutch elm disease

Compartment 1730: FHR = 2
Dominant species: pear
Comments: leaf miner and aphids on pear; gypsy moth; Dutch elm disease

Biotic and Abiotic Disturbances

- Dutch elm disease
- Leaf miner
- Aphids
- Gypsy moth

Ash Status

Presence of ash decline and mortality due to emerald ash borer was recorded in each compartment.

Compartment	Decline	Mortality
1713	Drainage	Drainage
1729	✓	✓
1730		✓



*Blank cells indicate that decline or mortality is not present in the compartment

*FHR = Forest Health Rating

Invasive Plant Cover



Buckthorn



Garlic mustard



Wild grape vine



Forest Health Report Card

McCraney Creek Trail

North 2

Woodland ID 133 (Zone 22)

Forest Health Rating (FHR)



- 1 Healthy with no obvious forest health issues
- 2 Moderately healthy, minor issues and <30% mortality
- 3 Health affected by obvious issues and >30% mortality



Woodland Summary

Overall, the woodland is healthy with no obvious issues affecting the dominant tree canopy. Ash decline and mortality due to emerald ash borer was observed in the woodland. No biotic or abiotic disturbances were reported. Only one invasive plant was present in the woodland, purple loosestrife.

By Compartment:

Compartment 3943:
Drainage

Compartment 3945: FHR = 1
Dominant species: sumac

Biotic and Abiotic Disturbances

- No disturbances present

Ash Status

Presence of ash decline and mortality due to emerald ash borer was recorded in each compartment.

Compartment	Decline	Mortality
3943	Drainage	Drainage
3945	✓	✓



*Blank cells indicate that decline or mortality is not present in the compartment

Special Notes:

Forest health monitoring plots established in all compartments of the woodland.

*FHR = Forest Health Rating

Invasive Plant Cover



Purple loosestrife



Forest Health Report Card

McCraney Creek Trail

North 2

Woodland ID 135 (Zone 22)

Forest Health Rating (FHR)



- 1 Healthy with no obvious forest health issues
- 2 Moderately healthy, minor issues and <30% mortality
- 3 Health affected by obvious issues and >30% mortality



Woodland Summary

Overall, the woodland is healthy with no obvious issues affecting the dominant tree canopy. Ash mortality due to emerald ash borer was observed in the woodland. Biotic disturbance of hypoxylon canker was recorded. Abiotic disturbance in the woodland included storm damage. A total of 4 invasive plants were present, with purple loosestrife recorded in both forest compartments.

By Compartment:

Compartment 37:
Drainage

Compartment 38: FHR = 1
Dominant species: willow species
Comments: storm damage

Compartment 39: FHR = 1
Dominant species: silver maple
Comments: hypoxylon canker; some spruce with dead tops

Special Notes:

Forest health monitoring plots established in all compartments of the woodland.

**FHR = Forest Health Rating*

Biotic and Abiotic Disturbances

- Hypoxylon canker
- Storm damage

Ash Status

Presence of ash decline and mortality due to emerald ash borer was recorded in each compartment.

Compartment	Decline	Mortality
37	Drainage	Drainage
38		
39		✓



**Blank cells indicate that decline or mortality is not present in the compartment*

Invasive Plant Cover



Purple loosestrife



Garlic mustard



Buckthorn



Wild grape vine



Forest Health Report Card

Glen Oak Creek Trail North 1

Woodland ID 139 (Zone 22)

Forest Health Rating (FHR)



- 1 Healthy with no obvious forest health issues
- 2 Moderately healthy, minor issues and <30% mortality
- 3 Health affected by obvious issues and >30% mortality



Woodland Summary

Overall, the woodland is healthy with no obvious issues affecting the dominant tree canopy. Ash decline and mortality due to emerald ash borer were observed in the woodland. No biotic or abiotic disturbances were recorded. A total of 6 invasive plants were present in the woodland, with buckthorn and purple loosestrife present in all forest compartments. The 5 most prevalent invasive plants are displayed below.

By Compartment:

Compartment 3940: FHR = 1
Dominant species: black locust

Compartment 3941:
Drainage

Compartment 3942: FHR = 1
Dominant species: silver maple

Biotic and Abiotic Disturbances

- No disturbances present

Ash Status

Presence of ash decline and mortality due to emerald ash borer was recorded in each compartment.

Compartment	Decline	Mortality
3940		
3941	Drainage	Drainage
3942	✓	✓



*Blank cells indicate that decline or mortality is not present in the compartment

*FHR = Forest Health Rating

Invasive Plant Cover



Buckthorn



Purple loosestrife



Bindweed



Garlic mustard



Black alder



Forest Health Report Card

Glen Oak Creek Trail North 1 Woodland ID 142 (Zone 22)

Forest Health Rating (FHR)



- 1 Healthy with no obvious forest health issues
- 2 Moderately healthy, minor issues and <30% mortality
- 3 Health affected by obvious issues and >30% mortality



Woodland Summary

Overall, the woodland is healthy with no obvious issues affecting the dominant tree canopy. Ash mortality due to emerald ash borer was observed in the woodland. No biotic or abiotic disturbances were recorded. A total of 5 invasive plants were present in the woodland. Each is displayed below.

By Compartment:

Compartment 197: FHR = 1
Dominant species: blue spruce

Compartment 198:
Drainage

Biotic and Abiotic Disturbances

- No disturbances present

Ash Status

Presence of ash decline and mortality due to emerald ash borer was recorded in each compartment.

Compartment	Decline	Mortality
197		✓
198	Drainage	Drainage



*Blank cells indicate that decline or mortality is not present in the compartment

Special Notes:

Forest health monitoring plots established in all compartments of the woodland.

*FHR = Forest Health Rating

Invasive Plant Cover



Buckthorn



Garlic mustard



Bindweed



Periwinkle



Purple loosestrife



Forest Health Report Card

Glen Oak Creek Trail North 1 Woodland ID 143 (Zone 22)

Forest Health Rating (FHR)



1	Healthy with no obvious forest health issues
2	Moderately healthy, minor issues and <30% mortality
3	Health affected by obvious issues and >30% mortality



Woodland Summary

Overall, the woodland is healthy with no obvious issues affecting the dominant tree canopy. Ash decline and mortality due to emerald ash borer were observed in the woodland. Minor biotic disturbance of nipple gall on hackberry was present in the woodland. No abiotic disturbances were recorded. A total of 6 invasive plants were present, with buckthorn and garlic mustard present in all forest compartments. The 5 most prevalent invasive plants are displayed below.

By Compartment:

Compartment 3909:
Drainage

Compartment 3910: FHR = 1
Dominant species: blue spruce
Comments: nipple gall on hackberry

Compartment 3912: FHR = 1
Dominant species: sumac

Biotic and Abiotic Disturbances

- Nipple gall on hackberry

Ash Status

Presence of ash decline and mortality due to emerald ash borer was recorded in each compartment.

Compartment	Decline	Mortality
3909	Drainage	Drainage
3910		✓
3912	✓	✓



*Blank cells indicate that decline or mortality is not present in the compartment

*FHR = Forest Health Rating

Invasive Plant Cover



Buckthorn



Garlic mustard



Purple loosestrife



Wild grape vine



Phragmites



Forest Health Report Card

Oakhaven Pond

Woodland ID 144 (Zone 22)

Forest Health Rating (FHR)

- ✓ **1** Healthy with no obvious forest health issues
- 2** Moderately healthy, minor issues and <30% mortality
- 3** Health affected by obvious issues and >30% mortality



Woodland Summary

Overall, the woodland is healthy with no obvious issues affecting the dominant tree canopy. Ash decline and mortality due to emerald ash borer were observed in the woodland. No biotic or abiotic disturbances were present. A total of 3 invasive plants were present in the woodland; English ivy, garlic mustard, purple loosestrife.

By Compartment:

Compartment 100:
Drainage

Compartment 101: FHR = 1
Dominant species: silver maple

Biotic and Abiotic Disturbances

- No disturbances present

Ash Status

Presence of ash decline and mortality due to emerald ash borer was recorded in each compartment.

Compartment	Decline	Mortality
100	Drainage	Drainage
101	✓	✓



*Blank cells indicate that decline or mortality is not present in the compartment

*FHR = Forest Health Rating

Invasive Plant Cover



English ivy



Garlic mustard



Purple loosestrife



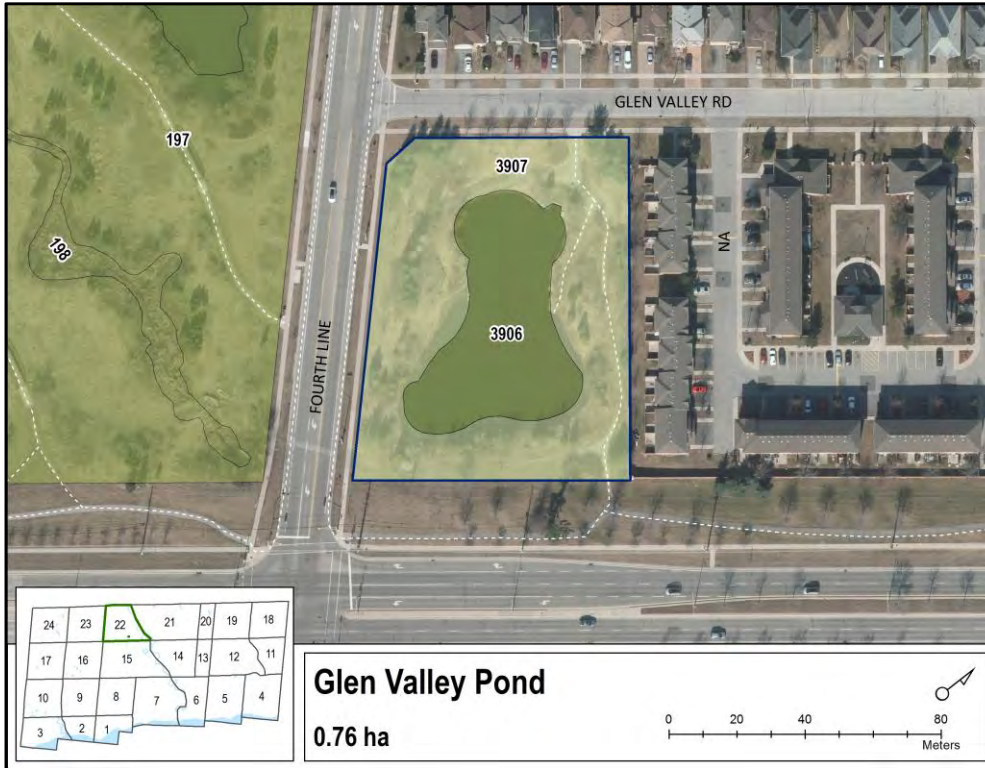
Forest Health Report Card

Forest Health Rating (FHR)

Glen Valley Pond

Woodland ID 149 (Zone 22)

- ✓ **1** Healthy with no obvious forest health issues
- 2** Moderately healthy, minor issues and <30% mortality
- 3** Health affected by obvious issues and >30% mortality



Woodland Summary

Overall, the woodland is healthy with no obvious issues affecting the dominant tree canopy. Ash mortality due to emerald ash borer was observed in the woodland. Biotic disturbance of tar spot, anthracnose, and apple rust were present. No abiotic disturbances were recorded. A total of 4 invasive plants were present in the woodland; buckthorn, bindweed, garlic mustard, purple loosestrife. These 4 are displayed below.

By Compartment:

Compartment 3906:
Drainage

Compartment 3907: FHR = 1
Dominant species: mixed maple
Comments: tar spot; anthracnose on Norway maple; apple rust

Biotic and Abiotic Disturbances

- Tar spot
- Anthracnose on Norway maple
- Apple rust

Ash Status

Presence of ash decline and mortality due to emerald ash borer was recorded in each compartment.

Compartment	Decline	Mortality
3906	Drainage	Drainage
3907		✓



*Blank cells indicate that decline or mortality is not present in the compartment

*FHR = Forest Health Rating

Invasive Plant Cover



Buckthorn



Bindweed



Garlic mustard



Purple loosestrife



Forest Health Report Card

Forest Health Rating (FHR)

Kestell Pond

Woodland ID 150 (Zone 19)



- 1** Healthy with no obvious forest health issues
- 2** Moderately healthy, minor issues and <30% mortality
- 3** Health affected by obvious issues and >30% mortality



Woodland Summary

Overall, the woodland is healthy with no obvious issues affecting the dominant tree canopy. Biotic disturbance of Japanese beetle, and discoloration and dieback on newly planted trees was recorded in the woodland. No abiotic disturbances were present. A total of 3 invasive plants were recorded; English ivy, garlic mustard, purple loosestrife. Each of these is displayed below.

By Compartment:

Compartment 391:
Drainage

Compartment 392: FHR = 1
Dominant species: willow species
Comments: Japanese beetle; discoloration and dieback in newly planted hackberry and maple trees

Biotic and Abiotic Disturbances

- Japanese beetle
- Discolouration and dieback on newly planted hackberry and maple trees

Ash Status

Presence of ash decline and mortality due to emerald ash borer was recorded in each compartment.

Compartment	Decline	Mortality
391	Drainage	Drainage
392		



*Blank cells indicate that decline or mortality is not present in the compartment

*FHR = Forest Health Rating

Invasive Plant Cover



English ivy



Garlic mustard



Purple loosestrife



Forest Health Report Card

Exception Zone 168

Woodland ID 168 (Zone 6)

Forest Health Rating (FHR)

- ✓ **1** Healthy with no obvious forest health issues
- 2** Moderately healthy, minor issues and <30% mortality
- 3** Health affected by obvious issues and >30% mortality



Woodland Summary

Overall, the woodland is healthy with no obvious issues affecting the dominant tree canopy. Ash decline due to emerald ash borer was observed in the woodland. No biotic or abiotic disturbances were recorded. A total of 2 invasive plants were present, garlic mustard and wild grape vine.

By Compartment:

Compartment 10883: FHR = 1
Dominant species: Austrian pine

Biotic and Abiotic Disturbances

- No disturbances present

Ash Status

Presence of ash decline and mortality due to emerald ash borer was recorded in each compartment.

Compartment	Decline	Mortality
10883	✓	



*Blank cells indicate that decline or mortality is not present in the compartment

*FHR = Forest Health Rating

Invasive Plant Cover



Garlic mustard



Wild grape vine



Forest Health Report Card

Perkin's Passage Woodland ID 169 (Zone 6)

Forest Health Rating (FHR)

- ✓ **1** Healthy with no obvious forest health issues
- 2** Moderately healthy, minor issues and <30% mortality
- 3** Health affected by obvious issues and >30% mortality



Woodland Summary

Overall, the woodland is healthy with no obvious issues affecting the dominant tree canopy. Ash mortality due to emerald ash borer was observed in the woodland. No biotic disturbances were recorded. Abiotic disturbance in the woodland included harvesting of ash trees in 2012. A total of 3 invasive plants were present, with garlic mustard present in all forest compartments.

By Compartment:

Compartment 6402:
Drainage

Compartment 6403: FHR = 1
Dominant species: Manitoba maple

Compartment 6404: FHR = 1
Dominant species: black walnut

Compartment 6406: FHR = 1
Dominant species: green ash
Comments: harvested in 2012

Biotic and Abiotic Disturbances

- Forest harvesting

Ash Status

Presence of ash decline and mortality due to emerald ash borer was recorded in each compartment.

Compartment	Decline	Mortality
6402	Drainage	Drainage
6403		✓
6404		✓
6406		



*Blank cells indicate that decline or mortality is not present in the compartment

*FHR = Forest Health Rating

Invasive Plant Cover



Garlic mustard



Buckthorn



Wild grape vine



Forest Health Report Card

Post Park

Woodland ID 172 (Zone 6)

Forest Health Rating (FHR)



- 1 Healthy with no obvious forest health issues
- 2 Moderately healthy, minor issues and <30% mortality
- 3 Health affected by obvious issues and >30% mortality



Woodland Summary

Overall, the woodland is healthy with no obvious issues affecting the dominant tree canopy. Some ash mortality due to emerald ash borer was observed in the woodland. Biotic disturbance of hypoxylon canker and dieback and crown thinning were recorded. Abiotic disturbance in the woodland included storm damage. A total of 3 invasive plants were present, with garlic mustard present in all forest compartments.

By Compartment:

Compartment 11841: FHR = 1
Dominant species: honey locust
Comments:

Compartment 11842: FHR = 1
Dominant species: silver maple
Comments: storm damage

Compartment 11844: FHR = 1
Dominant species: black walnut
Comments: hypoxylon canker on trembling aspen; dieback and crown thinning of Siberian elm and red pine

Special Notes:
Forest health monitoring plots established in all compartments of the woodland.

*FHR = Forest Health Rating

Biotic and Abiotic Disturbances

- Hypoxylon canker on trembling aspen
- Dieback and crown thinning in Siberian elm and red pine
- Storm damage

Ash Status

Presence of ash decline and mortality due to emerald ash borer was recorded in each compartment.

Compartment	Decline	Mortality
11841		
11842		
11844		✓



*Blank cells indicate that decline or mortality is not present in the compartment

Invasive Plant Cover



Garlic mustard



Wild grape vine



English ivy



Forest Health Report Card

Glen Oak Park

Woodland ID 175 (Zone 7)

Forest Health Rating (FHR)



- 1 Healthy with no obvious forest health issues
- 2 Moderately healthy, minor issues and <30% mortality
- 3 Health affected by obvious issues and >30% mortality



Woodland Summary

Overall, the woodland is healthy with no obvious issues affecting the dominant tree canopy. Ash mortality due to emerald ash borer was observed in the woodland. No biotic or abiotic disturbances were recorded. A total of 2 invasive plants were present, buckthorn and garlic mustard.

By Compartment:

Compartment 13781:
Drainage

Compartment 13784: FHR = 1
Dominant species: willow species

Biotic and Abiotic Disturbances

- No disturbances present

Ash Status

Presence of ash decline and mortality due to emerald ash borer was recorded in each compartment.

Compartment	Decline	Mortality
13781	Drainage	Drainage
13784		✓



*Blank cells indicate that decline or mortality is not present in the compartment

Special Notes:

Forest health monitoring plots established in all compartments of the woodland.

*FHR = Forest Health Rating

Invasive Plant Cover



Buckthorn



Garlic mustard



Forest Health Report Card

Oakville Transit Woodland ID 178 (Zone 7)

Forest Health Rating (FHR)

- ✓ 1 Healthy with no obvious forest health issues
- 2 Moderately healthy, minor issues and <30% mortality
- 3 Health affected by obvious issues and >30% mortality



Woodland Summary

Overall, the woodland is healthy with no obvious issues affecting the dominant tree canopy. Ash mortality due to emerald ash borer was observed in the woodland. Biotic disturbance of Dutch elm disease was recorded. No abiotic disturbance was present. A total of 2 invasive plants were recorded in the woodland, buckthorn and garlic mustard. The majority of compartments in this woodland were inaccessible to survey.

By Compartment:

Compartment 13174:
Drainage

Compartment 13182: FHR = # 1
Dominant species: willow species
Comments: Dutch elm disease

Compartment 13443:
Not accessible (N/A)

Compartment 13444:
Not accessible (N/A)

Compartment 13445:
Not accessible (N/A)

Biotic and Abiotic Disturbances

- Dutch elm disease

Ash Status

Presence of ash decline and mortality due to emerald ash borer was recorded in each compartment.

Compartment	Decline	Mortality
13174	Drainage	Drainage
13182		✓
13443	N/A	N/A
13444	N/A	N/A
13445	N/A	N/A



*Blank cells indicate that decline or mortality is not present in the compartment

*FHR = Forest Health Rating

Invasive Plant Cover



Buckthorn



Garlic mustard



Forest Health Report Card

Exception Zone 179

Woodland ID 179 (Zone 7)

Forest Health Rating (FHR)



- 1 Healthy with no obvious forest health issues
- 2 Moderately healthy, minor issues and <30% mortality
- 3 Health affected by obvious issues and >30% mortality



Woodland Summary

Overall, the woodland is healthy with no obvious issues affecting the dominant tree canopy. Ash mortality due to emerald ash borer was observed in the woodland. No biotic or abiotic disturbances were recorded. A total of 3 invasive plants were present in the woodland, buckthorn, garlic mustard, and purple loosestrife.

By Compartment:

Compartment 13169: FHR = 1
Dominant species: willow species

Biotic and Abiotic Disturbances

- No disturbances present

Ash Status

Presence of ash decline and mortality due to emerald ash borer was recorded in each compartment.

Compartment	Decline	Mortality
13169		✓



*Blank cells indicate that decline or mortality is not present in the compartment

*FHR = Forest Health Rating

Invasive Plant Cover



Buckthorn



Garlic mustard



Purple loosestrife



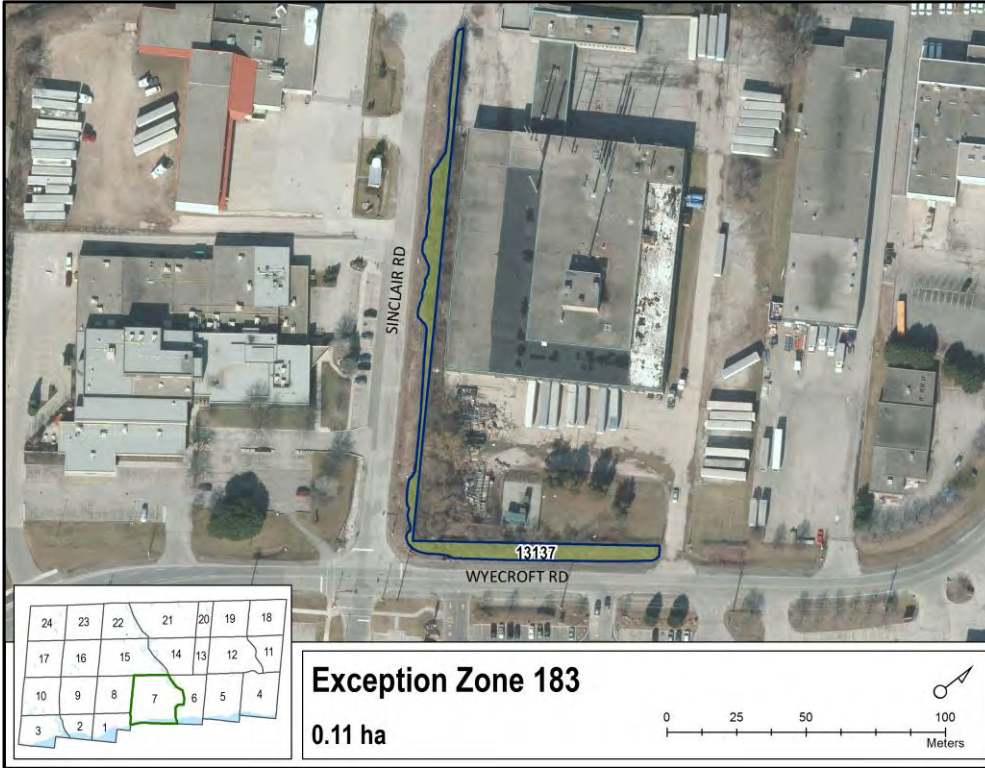
Forest Health Report Card

Exception Zone 183

Woodland ID 183 (Zone 7)

Forest Health Rating (FHR)

- ✓ **1** Healthy with no obvious forest health issues
- 2** Moderately healthy, minor issues and <30% mortality
- 3** Health affected by obvious issues and >30% mortality



Woodland Summary

Overall, the woodland is healthy with no obvious issues affecting the dominant tree canopy. Ash mortality due to emerald ash borer was observed in the woodland. No biotic or abiotic disturbances were recorded. A total of 2 invasive plants were present in the woodland, buckthorn and garlic mustard.

By Compartment:

Compartment 13137: FHR = 1
Dominant species: sumac

Biotic and Abiotic Disturbances

- No disturbances present

Ash Status

Presence of ash decline and mortality due to emerald ash borer was recorded in each compartment.

Compartment	Decline	Mortality
13137		✓



*Blank cells indicate that decline or mortality is not present in the compartment

*FHR = Forest Health Rating

Invasive Plant Cover



Buckthorn



Garlic mustard



Forest Health Report Card

Bronte Beach Park Woodland ID 197 (Zone 3)

Forest Health Rating (FHR)

- ✓ **1** Healthy with no obvious forest health issues
- 2** Moderately healthy, minor issues and <30% mortality
- 3** Health affected by obvious issues and >30% mortality



Woodland Summary

Overall, the woodland is healthy with no obvious issues affecting the dominant tree canopy. Biotic disturbances of leaf miner, webworm, and anthracnose were recorded in the woodland. There were no abiotic disturbances present. No invasive plants were found in this woodland.

By Compartment:

Compartment 15054: FHR = 1
Dominant species: white birch
Comments: leaf miner; webworm nest on birch; anthracnose

Biotic and Abiotic Disturbances

- Leaf miner
- Webworm nest on birch
- Anthracnose

Ash Status

Presence of ash decline and mortality due to emerald ash borer was recorded in each compartment.

Compartment	Decline	Mortality
15054		



*Blank cells indicate that decline or mortality is not present in the compartment

Special Notes:

Forest health monitoring plots established in all compartments of the woodland.

*FHR = Forest Health Rating

Invasive Plant Cover

No invasive plants present



Forest Health Report Card

Bronte Beach/ Bronte Bluffs

Woodland ID 198 (Zone 3)

Forest Health Rating (FHR)



- 1 Healthy with no obvious forest health issues
- 2 Moderately healthy, minor issues and <30% mortality
- 3 Health affected by obvious issues and >30% mortality



Woodland Summary

Overall, the woodland is healthy with no obvious issues affecting the dominant tree canopy. Ash mortality due to emerald ash borer was observed in the woodland. No biotic or abiotic disturbances were recorded. Garlic mustard was the only invasive plant present in the woodlot.

By Compartment:

Compartment 16657: FHR = 1
Dominant species: Manitoba maple

Compartment 16658: FHR = 1
Dominant species: silver poplar

Biotic and Abiotic Disturbances

- No disturbances present

Ash Status

Presence of ash decline and mortality due to emerald ash borer was recorded in each compartment.

Compartment	Decline	Mortality
16657		
16658	✓	✓



*Blank cells indicate that decline or mortality is not present in the compartment

*FHR = Forest Health Rating

Invasive Plant Cover



Garlic mustard



Forest Health Report Card

Bronte Harbour Woodland ID 199 (Zone 3)

Forest Health Rating (FHR)

- ✓ **1** Healthy with no obvious forest health issues
- 2** Moderately healthy, minor issues and <30% mortality
- 3** Health affected by obvious issues and >30% mortality



Woodland Summary

Overall, the woodland is healthy with no obvious issues affecting the dominant tree canopy. Ash decline due to emerald ash borer was observed in the woodland. No biotic or abiotic disturbances were recorded. A total of 2 invasive plants were present in the woodland, buckthorn and garlic mustard.

By Compartment:

Compartment 15053: FHR = 1
Dominant species: mixed maples

Biotic and Abiotic Disturbances

- List biotic disturbances
- List abiotic disturbances
- Or, "No disturbances present"

Ash Status

Presence of ash decline and mortality due to emerald ash borer was recorded in each compartment.

Compartment	Decline	Mortality
15053	✓	



*Blank cells indicate that decline or mortality is not present in the compartment

Special Notes:

Forest health monitoring plots established in all compartments of the woodland.

*FHR = Forest Health Rating

Invasive Plant Cover



Buckthorn



Garlic mustard



Forest Health Report Card

Riverview Park

Woodland ID 207 (Zone 3)

Forest Health Rating (FHR)

- ✓ **1** Healthy with no obvious forest health issues
- 2** Moderately healthy, minor issues and <30% mortality
- 3** Health affected by obvious issues and >30% mortality



Woodland Summary

Overall, the woodland is healthy with no obvious issues affecting the dominant tree canopy. Ash decline and mortality due to emerald ash borer were observed in the woodland. Biotic disturbance of gypsy moth and hypoxylon canker were present. Abiotic disturbance in the woodland included recent harvesting of ash trees. A total of 3 invasive plants were present, with buckthorn and garlic mustard present in all forest compartments.

By Compartment:

Compartment 111:
Drainage

Compartment 112: FHR = 1
Dominant species: white birch
Comments: gypsy moth defoliation and egg masses; hypoxylon canker on trembling aspen;

Compartment 113:
Dominant species: willow species
Not accessible

Compartment 114: FHR = 1
Dominant species: green ash

Compartment 115: FHR = 1
Dominant species: mixed oak
Comments: gypsy moth; harvesting of ash

*FHR = Forest Health Rating

Biotic and Abiotic Disturbances

- Gypsy moth defoliation and egg masses
- Hypoxylon canker on trembling aspen
- Harvesting of ash trees

Ash Status

Presence of ash decline and mortality due to emerald ash borer was recorded in each compartment.

Compartment	Decline	Mortality
111	Drainage	Drainage
112	✓	
113	N/A	N/A
114	✓	
115	✓	✓



*Blank cells indicate that decline or mortality is not present in the compartment

Invasive Plant Cover



Buckthorn



Garlic mustard



Periwinkle



Forest Health Report Card

Bronte Creek

Woodland ID 232 (Zone 10)

Forest Health Rating (FHR)

- ✓ **1** Healthy with no obvious forest health issues
- 2** Moderately healthy, minor issues and <30% mortality
- 3** Health affected by obvious issues and >30% mortality



Woodland Summary

Overall, the woodland is healthy with no obvious issues affecting the dominant tree canopy. Some ash mortality due to emerald ash borer was observed in the woodland. No biotic disturbances were recorded. Storm damage was the only abiotic disturbance present. Buckthorn was the only invasive plant recorded in the woodland.

By Compartment:

Compartment 15681: FHR = 1
Dominant species: Norway maple

Compartment 15683: FHR = 1
Dominant species: sugar maple
Comments: storm damage

Compartment 15686: FHR = #
Dominant species: Scots pine

Compartment 15689: FHR = 1
Dominant species: apple

Biotic and Abiotic Disturbances

- Storm damage

Ash Status

Presence of ash decline and mortality due to emerald ash borer was recorded in each compartment.

Compartment	Decline	Mortality
15681		
15683		
15686		✓
15689		



*Blank cells indicate that decline or mortality is not present in the compartment

*FHR = Forest Health Rating

Invasive Plant Cover



Buckthorn



Forest Health Report Card

Forest Health Rating (FHR)

Red Oak Trail

Woodland ID 238 (Zone 10)

- ✓ **1** Healthy with no obvious forest health issues
- 2** Moderately healthy, minor issues and <30% mortality
- 3** Health affected by obvious issues and >30% mortality



Woodland Summary

Overall, the woodland is healthy with no obvious issues affecting the dominant tree canopy. Ash decline and mortality due to emerald ash borer were observed in the woodland. No biotic disturbance was recorded. Abiotic disturbance in the woodland included storm damage. A total of 3 invasive plants were present, with bindweed present in all forest compartments.

By Compartment:

Compartment 244:
Drainage

Compartment 245: FHR = 1
Dominant species: willow species

Compartment 246: FHR = 2
Dominant species: willow
Comments: storm damage on willow

Special Notes:
Forest health monitoring plots established in all compartments of the woodland.

*FHR = Forest Health Rating

Biotic and Abiotic Disturbances

- Storm damage

Ash Status

Presence of ash decline and mortality due to emerald ash borer was recorded in each compartment.

Compartment	Decline	Mortality
244	Drainage	Drainage
245		
246	✓	✓



*Blank cells indicate that decline or mortality is not present in the compartment

Invasive Plant Cover



Bindweed



Garlic mustard



Buckthorn



Forest Health Report Card

Forest Health Rating (FHR)

Arbourview Pond

Woodland ID 253 (Zone 23)



- 1 Healthy with no obvious forest health issues
- 2 Moderately healthy, minor issues and <30% mortality
- 3 Health affected by obvious issues and >30% mortality



Woodland Summary

Overall, the woodland is healthy with no obvious issues affecting the dominant tree canopy. Ash decline and mortality due to emerald ash borer were observed in the woodland. Biotic disturbance of gypsy moth on bur oak and hickory was recorded. A total of 5 invasive plants were present, with buckthorn present in all forest compartments.

By Compartment:

Compartment 4539:
Drainage

Compartment 4818: FHR = 1
Dominant species: bur oak
Comments: gypsy moth on bur oak

Compartment 4819: FHR = 1
Dominant species: willow species

Compartment 4821: FHR = 1
Dominant species: American beech

Compartment 4841: FHR = 1
Dominant species: spruce species

Compartment 4844: FHR = 1
Dominant species: mixed oak
Comments: gypsy moth on hickory

Biotic and Abiotic Disturbances

- Gypsy moth on bur oak and hickory

Ash Status

Presence of ash decline and mortality due to emerald ash borer was recorded in each compartment.

Compartment	Decline	Mortality
4539	Drainage	Drainage
4818	✓	
4819		
4821		✓
4841		✓
4844	✓	✓



*Blank cells indicate that decline or mortality is not present in the compartment

*FHR = Forest Health Rating

Invasive Plant Cover



Buckthorn



Garlic mustard



Purple loosestrife



Bindweed



Periwinkle



Forest Health Report Card

Fourteen Mile Creek Trail 1

Woodland ID 256 (Zone 23)

Forest Health Rating (FHR)

- ✓ **1** Healthy with no obvious forest health issues
- 2** Moderately healthy, minor issues and <30% mortality
- 3** Health affected by obvious issues and >30% mortality



Woodland Summary

Overall, the woodland is healthy with no obvious issues affecting the dominant tree canopy. Ash decline and mortality due to emerald ash borer were observed in the woodland. No biotic disturbance was recorded. Abiotic disturbance of storm damage on willow was present. A total of 2 invasive plants were present, buckthorn and garlic mustard.

By Compartment:

Compartment 29:
Drainage

Compartment 31: FHR = 1
Dominant species: white cedar

Compartment 33: FHR = 1
Dominant species: hawthorn
Comments: storm damage on willow

Compartment 35: FHR = 1
Dominant species: mixed maple

Special Notes:

Forest health monitoring plots established in all compartments of the woodland.

*FHR = Forest Health Rating

Biotic and Abiotic Disturbances

- Storm damage on willow

Ash Status

Presence of ash decline and mortality due to emerald ash borer was recorded in each compartment.

Compartment	Decline	Mortality
29	Drainage	Drainage
31	✓	✓
33	✓	
35		✓



*Blank cells indicate that decline or mortality is not present in the compartment

Invasive Plant Cover



Buckthorn



Garlic mustard



Forest Health Report Card

East Fourteen Mile Creek Trail 1

Woodland ID 258 (Zone 23)

Forest Health Rating (FHR)



- 1** Healthy with no obvious forest health issues
- 2** Moderately healthy, minor issues and <30% mortality
- 3** Health affected by obvious issues and >30% mortality



Woodland Summary

Overall, the woodland is healthy with no obvious issues affecting the dominant tree canopy. No biotic disturbances were present. Abiotic disturbance in the woodland included leaf scorch on planted maple trees. A total of 3 invasive plants were present, garlic mustard, purple loosestrife, phragmites.

By Compartment:

Compartment 18897:
Drainage

Compartment 18902: FHR = 1
Dominant species: willow
Comments: leaf scorch on planted maple

Biotic and Abiotic Disturbances

- Leaf scorch on planted maple

Ash Status

Presence of ash decline and mortality due to emerald ash borer was recorded in each compartment.

Compartment	Decline	Mortality
18897	Drainage	Drainage
18902		



*Blank cells indicate that decline or mortality is not present in the compartment

Special Notes:

Forest health monitoring plots established in all compartments of the woodland.

*FHR = Forest Health Rating

Invasive Plant Cover



Garlic mustard



Purple loosestrife



Phragmites



Forest Health Report Card

Arbourview Trail 1 Woodland ID 260 (Zone 23)

Forest Health Rating (FHR)



- 1 Healthy with no obvious forest health issues
- 2 Moderately healthy, minor issues and <30% mortality
- 3 Health affected by obvious issues and >30% mortality



Woodland Summary

Overall, the woodland is healthy with no obvious issues affecting the dominant tree canopy. Biotic disturbance of Dutch elm disease and gypsy moth were present. Abiotic disturbance in the woodland included storm damage and mechanical damage. A total of 3 invasive plants were present, with buckthorn and garlic mustard present in all forest compartments.

By Compartment:

Compartment 4523: FHR = 1
Dominant species: silver maple

Compartment 4525: FHR = 1
Dominant species: white pine
Comments: Dutch elm disease; storm damage; mechanical damage

Compartment 4527: FHR = 1
Dominant species: white oak
Comments: gypsy moth defoliation on mature oak; Dutch elm disease

Special Notes:

Forest health monitoring plots established in all compartments of the woodland.

**FHR = Forest Health Rating*

Biotic and Abiotic Disturbances

- Dutch elm disease
- Gypsy moth defoliation on mature oak
- Storm damage
- Mechanical damage

Ash Status

Presence of ash decline and mortality due to emerald ash borer was recorded in each compartment.

Compartment	Decline	Mortality
4523		
4525		
4527		



**Blank cells indicate that decline or mortality is not present in the compartment*

Invasive Plant Cover



Buckthorn



Garlic mustard



Wild grape vine



Forest Health Report Card

Forest Health Rating (FHR)

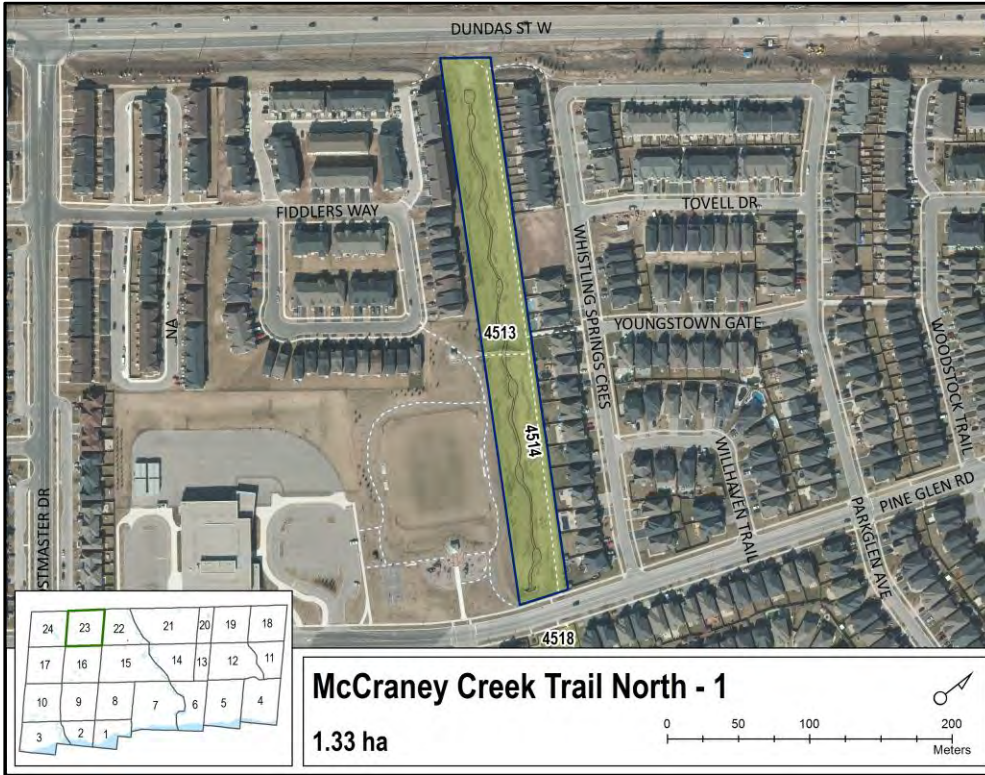
McCraney Creek Trail



- 1 Healthy with no obvious forest health issues
- 2 Moderately healthy, minor issues and <30% mortality
- 3 Health affected by obvious issues and >30% mortality

North 2

Woodland ID 264 (Zone 23)



Woodland Summary

Overall, the woodland is healthy with no obvious issues affecting the dominant tree canopy. No biotic or abiotic disturbances were recorded. There were no invasive plants found in the woodland.

By Compartment:

Compartment 4513:
Drainage

Compartment 4514: FHR = 1
Dominant species: basswood

Biotic and Abiotic Disturbances

- No disturbances present

Ash Status

Presence of ash decline and mortality due to emerald ash borer was recorded in each compartment.

Compartment	Decline	Mortality
4513	Drainage	Drainage
4514		



*Blank cells indicate that decline or mortality is not present in the compartment

Special Notes:

Forest health monitoring plots established in all compartments of the woodland.

*FHR = Forest Health Rating

Invasive Plant Cover

No Invasive Plants Present



LALLEMAND PLANT CARE

Forest Health Report Card

McCraney Creek Trail

North 1

Woodland ID 265 (Zone 23)

Forest Health Rating (FHR)



- 1 Healthy with no obvious forest health issues
- 2 Moderately healthy, minor issues and <30% mortality
- 3 Health affected by obvious issues and >30% mortality



Woodland Summary

Overall, the woodland is healthy with no obvious issues affecting the dominant tree canopy. Ash decline and mortality due to emerald ash borer were observed in the woodland. No biotic disturbances were present in the woodland. Abiotic disturbance was present as dieback in young planted maple trees. A total of 2 invasive plants were present, purple loosestrife and black alder.

By Compartment:

Compartment 4516:
Drainage

Compartment 4518: FHR = 1
Dominant species: willow species
Comments: dieback in young planted maple trees

Biotic and Abiotic Disturbances

- Dieback in young planted maple trees

Ash Status

Presence of ash decline and mortality due to emerald ash borer was recorded in each compartment.

Compartment	Decline	Mortality
4516	Drainage	Drainage
4518	✓	✓



*Blank cells indicate that decline or mortality is not present in the compartment

*FHR = Forest Health Rating

Invasive Plant Cover



Purple loosestrife



Black alder



Forest Health Report Card

Forest Health Rating (FHR)

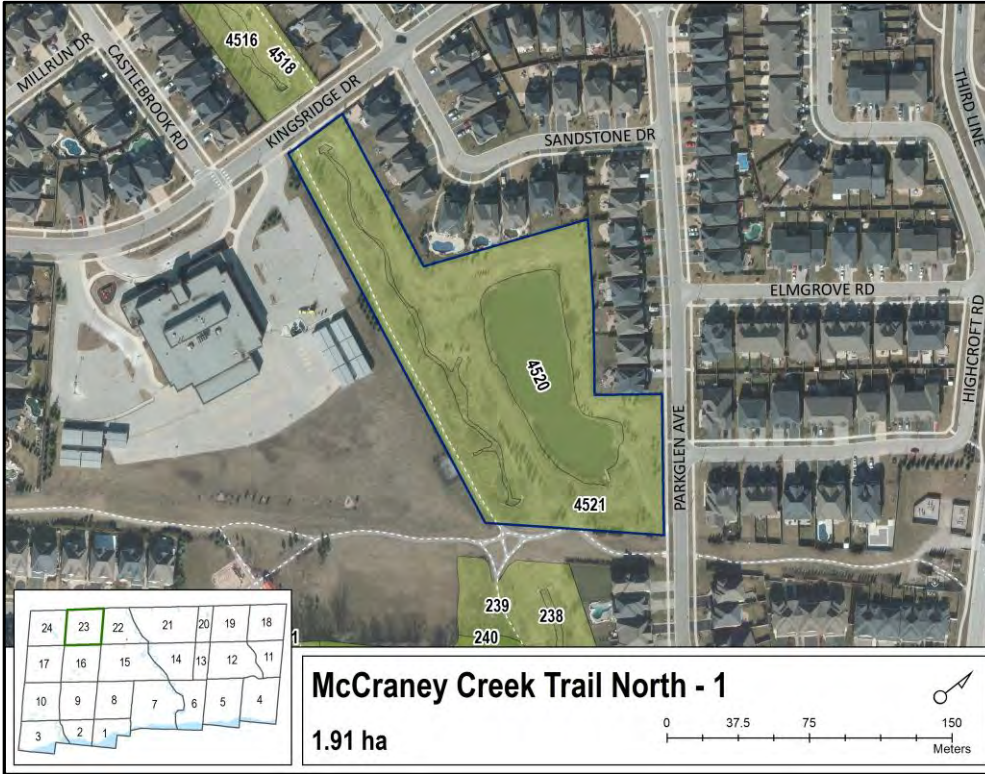
McCraney Creek Trail



- 1 Healthy with no obvious forest health issues
- 2 Moderately healthy, minor issues and <30% mortality
- 3 Health affected by obvious issues and >30% mortality

North 1

Woodland ID 266 (Zone 23)



Woodland Summary

Overall, the woodland is healthy with no obvious issues affecting the dominant tree canopy. Ash decline and mortality due to emerald ash borer were observed in the woodland. No biotic disturbances were recorded. Abiotic disturbance in the woodland included leaf scorch. Black alder was the only invasive plant recorded in the woodland.

By Compartment:

Compartment 4520:
Drainage

Compartment 4521: FHR = 1
Dominant species: willow species
Comments: young planted trees in decline; leaf scorch

Biotic and Abiotic Disturbances

- Leaf scorch

Ash Status

Presence of ash decline and mortality due to emerald ash borer was recorded in each compartment.

Compartment	Decline	Mortality
4520	Drainage	Drainage
4521	✓	✓



*Blank cells indicate that decline or mortality is not present in the compartment

*FHR = Forest Health Rating

Invasive Plant Cover



Black alder



Forest Health Report Card

Forest Health Rating (FHR)

Woodgate Woods

Woodland ID 267 (Zone 23)

- ✓ **1** Healthy with no obvious forest health issues
- 2** Moderately healthy, minor issues and <30% mortality
- 3** Health affected by obvious issues and >30% mortality



Woodland Summary

Overall, the woodland is healthy with no obvious issues affecting the dominant tree canopy. Ash decline and mortality due to emerald ash borer were observed. Biotic disturbance of Dutch elm disease, gypsy moth, and anthracnose were present. No abiotic disturbances were recorded in the woodland. A total of 2 invasive plants were present, with buckthorn and garlic mustard.

By Compartment:

Compartment 238:
Drainage

Compartment 239: FHR = 1
Dominant species: trembling aspen
Comments:

Compartment 240: FHR = 2
Dominant species: white ash
Comments: Dutch elm disease

Compartment 241: FHR = 1
Dominant species: shagbark hickory

Compartment 242: FHR = 1
Dominant species: shagbark hickory

Compartment 243: FHR = 1
Dominant species: sugar maple
Comments: gypsy moth;
anthracnose on oak species

Special Notes:
Forest health monitoring plots established in all compartments of the woodland.

*FHR = Forest Health Rating

Biotic and Abiotic Disturbances

- Dutch elm disease
- Gypsy moth
- Anthracnose

Ash Status

Presence of ash decline and mortality due to emerald ash borer was recorded in each compartment.

Compartment	Decline	Mortality
238	Drainage	Drainage
239		
240	✓	✓
241		✓
242		✓
243	✓	✓



*Blank cells indicate that decline or mortality is not present in the compartment

Invasive Plant Cover



Buckthorn



Garlic mustard



Forest Health Report Card

Colonel Williams Trail Woodland ID 269 (Zone 24)

Forest Health Rating (FHR)

- 1 Healthy with no obvious forest health issues
- 2 Moderately healthy, minor issues and <30% mortality
- 3 Health affected by obvious issues and >30% mortality



Woodland Summary

Overall, the woodland is healthy with no obvious issues affecting the dominant tree canopy. No biotic or abiotic disturbances were present in the woodland. Garlic mustard was the only invasive plant recorded in the woodland and it was present in all compartments.

By Compartment:

Compartment 5448:
Drainage

Compartment 5449: FHR = 1
Dominant species: white spruce

Compartment 5451: FHR = 1
Dominant species: black locust

Compartment 5453: FHR = 1
Dominant species: trembling aspen

Biotic and Abiotic Disturbances

- No disturbances present

Ash Status

Presence of ash decline and mortality due to emerald ash borer was recorded in each compartment.

Compartment	Decline	Mortality
5448	Drainage	Drainage
5449		
5451		
5453		



*Blank cells indicate that decline or mortality is not present in the compartment

*FHR = Forest Health Rating

Invasive Plant Cover



Garlic mustard



Forest Health Report Card

Fourteen Mile Creek Trail 1

Woodland ID 271 (Zone 24)

Forest Health Rating (FHR)



- 1 Healthy with no obvious forest health issues
- 2 Moderately healthy, minor issues and <30% mortality
- 3 Health affected by obvious issues and >30% mortality



Woodland Summary

Overall, the woodland is healthy with no obvious issues affecting the dominant tree canopy. Some ash mortality due to emerald ash borer was observed in the woodland. Biotic disturbance of gypsy moth and tar spot were present. Abiotic disturbance in the woodland included storm damage. A total of 2 invasive plants were present, buckthorn and garlic mustard.

By Compartment:

Compartment 6182:
Drainage

Compartment 6186: FHR = 1
Dominant species: Norway spruce

Compartment 6187: FHR = 1
Dominant species:

Compartment 6188: FHR = 2
Dominant species: sugar maple
Comments: gypsy moth; tar spot; storm damage; crown decline in mature maples

Compartment 6196: FHR = 1
Dominant species: white pine

Biotic and Abiotic Disturbances

- Gypsy moth
- Tar spot
- Storm damage

Ash Status

Presence of ash decline and mortality due to emerald ash borer was recorded in each compartment.

Compartment	Decline	Mortality
6182	Drainage	Drainage
6186		
6187		
6188		
6196		✓



*Blank cells indicate that decline or mortality is not present in the compartment

*FHR = Forest Health Rating

Invasive Plant Cover



Buckthorn



Garlic mustard



Forest Health Report Card

Forest Health Rating (FHR)

Colonel Williams Trail

Woodland ID 272 (Zone 24)



- 1 Healthy with no obvious forest health issues
- 2 Moderately healthy, minor issues and <30% mortality
- 3 Health affected by obvious issues and >30% mortality



Woodland Summary

Overall, the woodland is healthy with no obvious issues affecting the dominant tree canopy. Biotic disturbance of gypsy moth and hypoxylon canker were present in the woodland. No abiotic disturbance was recorded. Garlic mustard was the only invasive plant recorded and it was present in both forest compartments.

By Compartment:

Compartment 5454:
Drainage

Compartment 5456: FHR = 1
Dominant species: trembling aspen
Comments: gypsy moth; hypoxylon canker

Compartment 5762: FHR = 1
Dominant species: trembling aspen
Comments: hypoxylon canker

Special Notes:

Forest health monitoring plots established in all compartments of the woodland.

*FHR = Forest Health Rating

Biotic and Abiotic Disturbances

- Gypsy moth
- Hypoxylon canker

Ash Status

Presence of ash decline and mortality due to emerald ash borer was recorded in each compartment.

Compartment	Decline	Mortality
5454	Drainage	Drainage
5456		
5762		



*Blank cells indicate that decline or mortality is not present in the compartment

Invasive Plant Cover



Garlic mustard



Forest Health Report Card

Exception Zone 278

Woodland ID 278 (Zone 7)

Forest Health Rating (FHR)



- 1 Healthy with no obvious forest health issues
- 2 Moderately healthy, minor issues and <30% mortality
- 3 Health affected by obvious issues and >30% mortality



Woodland Summary

Overall, the woodland is healthy with no obvious issues affecting the dominant tree canopy. No biotic or abiotic disturbances were recorded in the woodland. Garlic mustard was the only invasive plant present.

By Compartment:

Compartment 13154: FHR = 1
Dominant species: black locust

Biotic and Abiotic Disturbances

- No disturbances present

Ash Status

Presence of ash decline and mortality due to emerald ash borer was recorded in each compartment.

Compartment	Decline	Mortality
13154		



*Blank cells indicate that decline or mortality is not present in the compartment

*FHR = Forest Health Rating

Invasive Plant Cover



Garlic mustard



Forest Health Report Card

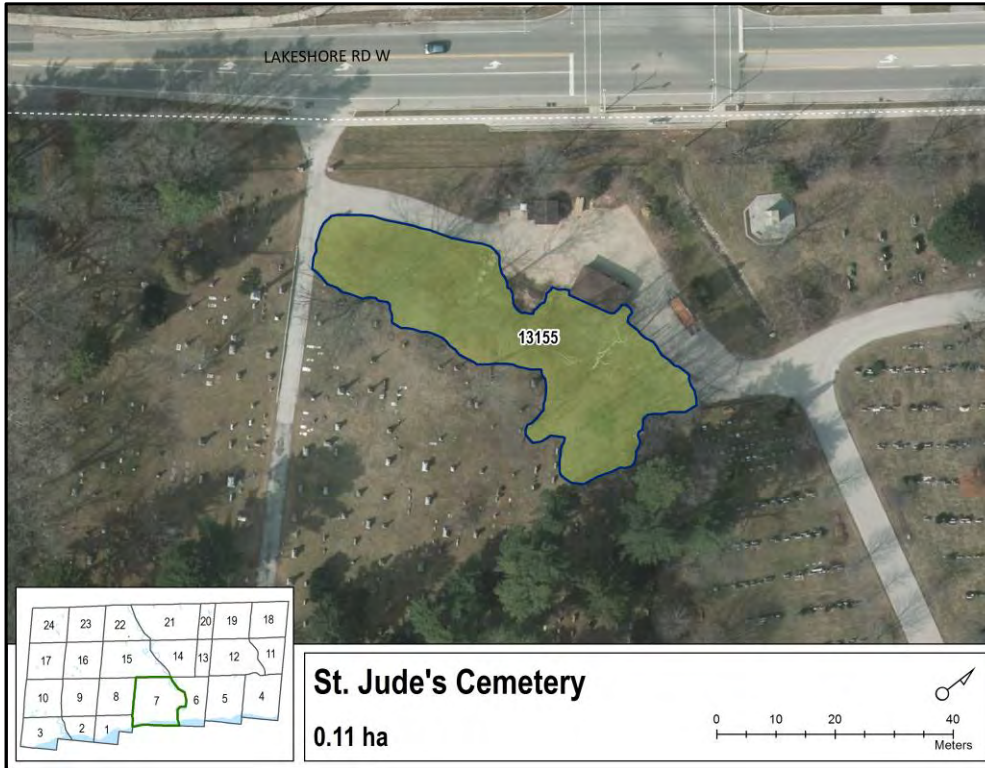
St. Jude's Cemetery

Woodland ID 279 (Zone 7)

Forest Health Rating (FHR)



- 1 Healthy with no obvious forest health issues
- 2 Moderately healthy, minor issues and <30% mortality
- 3 Health affected by obvious issues and >30% mortality



Woodland Summary

Overall, the woodland is healthy with no obvious issues affecting the dominant tree canopy. Some ash decline due to emerald ash borer was observed in the woodland. No biotic or abiotic disturbances were present. A total of 3 invasive plants were present, buckthorn, garlic mustard, and purple loosestrife.

By Compartment:

Compartment 13155: FHR = 1
Dominant species: red oak

Biotic and Abiotic Disturbances

- No disturbances present

Ash Status

Presence of ash decline and mortality due to emerald ash borer was recorded in each compartment.

Compartment	Decline	Mortality
13155	✓	



*Blank cells indicate that decline or mortality is not present in the compartment

*FHR = Forest Health Rating

Invasive Plant Cover



Buckthorn



Garlic mustard



Purple loosestrife



Forest Health Report Card

Exception Zone 280

Woodland ID 280 (Zone 8)

Forest Health Rating (FHR)



- 1 Healthy with no obvious forest health issues
- 2 Moderately healthy, minor issues and <30% mortality
- 3 Health affected by obvious issues and >30% mortality



Woodland Summary

Overall, the woodland is healthy with no obvious issues affecting the dominant tree canopy. No biotic or abiotic disturbances were recorded in the woodland. A total of 3 invasive plants were present, garlic mustard, purple loosestrife, and wild grape vine.

By Compartment:

Compartment 13156: FHR = 1
Dominant species: willow

Biotic and Abiotic Disturbances

- No disturbances present

Ash Status

Presence of ash decline and mortality due to emerald ash borer was recorded in each compartment.

Compartment	Decline	Mortality
13156		



*Blank cells indicate that decline or mortality is not present in the compartment

*FHR = Forest Health Rating

Invasive Plant Cover



Garlic mustard



Purple loosestrife



Wild grape vine



Forest Health Report Card

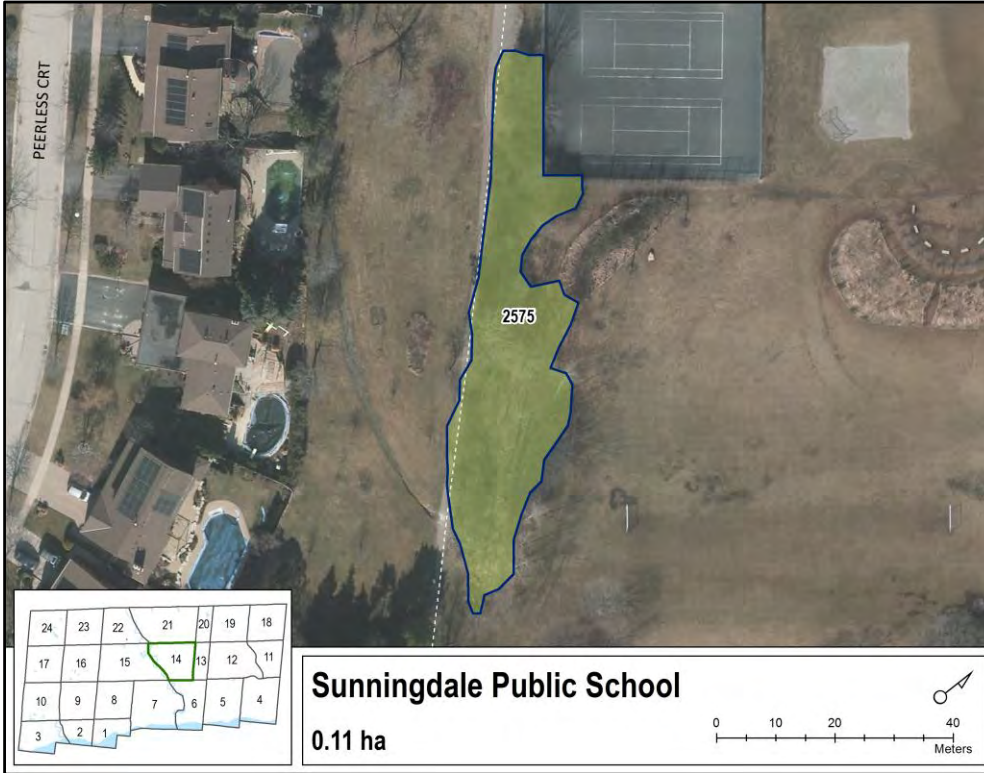
Sunningdale Public School

Woodland ID 284 (Zone 14)

Forest Health Rating (FHR)



- 1 Healthy with no obvious forest health issues
- 2 Moderately healthy, minor issues and <30% mortality
- 3 Health affected by obvious issues and >30% mortality



Woodland Summary

Overall, the woodland is healthy with no obvious issues affecting the dominant tree canopy. Ash decline due to emerald ash borer was observed in the woodland. No biotic or abiotic disturbances were recorded. A total of 2 invasive plants were present, buckthorn and garlic mustard.

By Compartment:

Compartment 2575: FHR = 1
Dominant species: buckthorn
Comments:

Special Notes:
Forest health monitoring plots established in all compartments of the woodland.

*FHR = Forest Health Rating

Biotic and Abiotic Disturbances

- No disturbances present

Ash Status

Presence of ash decline and mortality due to emerald ash borer was recorded in each compartment.

Compartment	Decline	Mortality
2575	✓	



*Blank cells indicate that decline or mortality is not present in the compartment

Invasive Plant Cover



Buckthorn



Garlic mustard



Forest Health Report Card

Exception Zone 285

Woodland ID 285 (Zone 7)

Forest Health Rating (FHR)

- ✓ **1** Healthy with no obvious forest health issues
- 2** Moderately healthy, minor issues and <30% mortality
- 3** Health affected by obvious issues and >30% mortality



Woodland Summary

Overall, the woodland is healthy with no obvious issues affecting the dominant tree canopy. Some ash mortality due to emerald ash borer was observed in the woodland. Biotic disturbance of tar spot on predominantly understory maples was present. No abiotic disturbances were recorded. Garlic mustard was the only invasive plant present in the woodland.

By Compartment:

Compartment 1377: FHR = 1
 Dominant species: white ash
 Comments: tar spot on maple

Biotic and Abiotic Disturbances

- Tar spot on maple

Ash Status

Presence of ash decline and mortality due to emerald ash borer was recorded in each compartment.

Compartment	Decline	Mortality
1377		✓



*Blank cells indicate that decline or mortality is not present in the compartment

Special Notes:

Forest health monitoring plots established in all compartments of the woodland.

*FHR = Forest Health Rating

Invasive Plant Cover



Garlic mustard



Forest Health Report Card

Brook Valley Park Woodland ID 286 (Zone 8)

Forest Health Rating (FHR)

- ✓ **1** Healthy with no obvious forest health issues
- 2** Moderately healthy, minor issues and <30% mortality
- 3** Health affected by obvious issues and >30% mortality



Woodland Summary

Overall, the woodland is healthy with no obvious issues affecting the dominant tree canopy. Some ash mortality due to emerald ash borer was observed in the woodland. No biotic disturbances were recorded. Abiotic disturbance in the woodland included storm damage. General decline in willow and discolouration of pine foliage was also recorded. A total of 2 invasive plants were present, garlic mustard and bindweed.

By Compartment:

Compartment 14116:
Drainage

Compartment 14120: FHR = 1
Dominant species: willow
Comments: discolouration in pine foliage; general decline in willow; storm damage

Biotic and Abiotic Disturbances

- Storm damage

Ash Status

Presence of ash decline and mortality due to emerald ash borer was recorded in each compartment.

Compartment	Decline	Mortality
14116	Drainage	Drainage
14120		✓



*Blank cells indicate that decline or mortality is not present in the compartment

*FHR = Forest Health Rating

Invasive Plant Cover



Garlic mustard



Bindweed



Forest Health Report Card

Sunningdale Public School

Woodland ID 288 (Zone 14)

Forest Health Rating (FHR)



1	Healthy with no obvious forest health issues
2	Moderately healthy, minor issues and <30% mortality
3	Health affected by obvious issues and >30% mortality



Woodland Summary

Overall, the woodland is healthy with no obvious issues affecting the dominant tree canopy. Ash decline due to emerald ash borer was observed in the woodland. No biotic or abiotic disturbances were recorded. A total of 2 invasive plants were present, buckthorn and garlic mustard.

By Compartment:

Compartment 2574: FHR = 1
Dominant species: buckthorn

Biotic and Abiotic Disturbances

- No disturbances present

Ash Status

Presence of ash decline and mortality due to emerald ash borer was recorded in each compartment.

Compartment	Decline	Mortality
2574	✓	



*Blank cells indicate that decline or mortality is not present in the compartment

Special Notes:

Forest health monitoring plots established in all compartments of the woodland.

*FHR = Forest Health Rating

Invasive Plant Cover



Buckthorn



Garlic mustard



Forest Health Report Card

Queens Parkette

Woodland ID 289 (Zone 14)

Forest Health Rating (FHR)



- 1 Healthy with no obvious forest health issues
- 2 Moderately healthy, minor issues and <30% mortality
- 3 Health affected by obvious issues and >30% mortality



Woodland Summary

Overall, the woodland is healthy with no obvious issues affecting the dominant tree canopy. No biotic or abiotic disturbances were recorded in the woodland. Buckthorn was the only invasive plant species found in the woodland.

By Compartment:

Compartment 1603: FHR = 1
Dominant species: serviceberry

Biotic and Abiotic Disturbances

- No disturbances present

Ash Status

Presence of ash decline and mortality due to emerald ash borer was recorded in each compartment.

Compartment	Decline	Mortality
1603		



*Blank cells indicate that decline or mortality is not present in the compartment

*FHR = Forest Health Rating

Invasive Plant Cover



Buckthorn



Forest Health Report Card

Exception Zone 290

Woodland ID 290 (Zone 7)

Forest Health Rating (FHR)

- 1 Healthy with no obvious forest health issues
- 2 Moderately healthy, minor issues and <30% mortality
- 3 Health affected by obvious issues and >30% mortality



Woodland Summary

Overall, the woodland is healthy with no obvious issues affecting the dominant tree canopy. No biotic or abiotic disturbances were recorded in the woodland. A total of 2 invasive plants were present, buckthorn and periwinkle.

By Compartment:

Compartment 12491: FHR = 1
Dominant species: Norway maple

Biotic and Abiotic Disturbances

- No disturbances present

Ash Status

Presence of ash decline and mortality due to emerald ash borer was recorded in each compartment.

Compartment	Decline	Mortality
12491		



**Blank cells indicate that decline or mortality is not present in the compartment*

**FHR = Forest Health Rating*

Invasive Plant Cover



Buckthorn



Periwinkle



Forest Health Report Card

Forest Health Rating (FHR)

Pinewood Park

Woodland ID 4 (Zone 5)

- 1 Healthy with no obvious forest health issues
- ✓ 2 Moderately healthy, minor issues and <30% mortality
- 3 Health affected by obvious issues and >30% mortality



Woodland Summary

Overall, the woodland is moderately healthy with minor issues affecting the dominant tree canopy. Ash decline and mortality due to emerald ash borer was observed in the woodland. Biotic disturbance of tar spot and anthracnose were present. Abiotic disturbance in the woodland included storm damage. A total of 6 invasive plants were present, with buckthorn, garlic mustard, and wild grape vine recorded in all forest compartments.

By Compartment:

Compartment 10569: FHR = 2
Dominant species: white ash
Comments: tar spot; anthracnose; dead branches on white birch

Compartment 10573: FHR = 2
Dominant species: Siberian elm
Comments: anthracnose on elm; tar spot on Manitoba maple; storm damage on elm

Biotic and Abiotic Disturbances

- Tar spot
- Anthracnose
- Storm damage

Ash Status

Presence of ash decline and mortality due to emerald ash borer was recorded in each compartment.

Compartment	Decline	Mortality
10569	✓	✓
10573		



*Blank cells indicate that decline or mortality is not present in the compartment

*FHR = Forest Health Rating

Invasive Plant Cover



Buckthorn



Garlic mustard



Wild grape vine



Purple loosestrife



Periwinkle



Forest Health Report Card

Cornwall Woods

Woodland ID 8 (Zone 5)

Forest Health Rating (FHR)

- 1 Healthy with no obvious forest health issues
- ✓ 2 Moderately healthy, minor issues and <30% mortality
- 3 Health affected by obvious issues and >30% mortality



Woodland Summary

Overall, the woodland is moderately healthy with minor issues affecting the dominant tree canopy. Ash decline and mortality due to emerald ash borer was observed in the woodland. Biotic disturbance recorded included tar spot on maple, anthracnose, and foliage discoloration. Abiotic disturbance in the woodland included harvesting. A total of 4 invasive plants were present, with buckthorn and garlic mustard present in all forest compartments.

By Compartment:

Compartment 9282:
Drainage

Compartment 9301:
No access due to fence

Compartment 9290: FHR = 1
Dominant species: white pine
Comments: tar spot on Norway maple; browning of pine needles

Compartment 9291: FHR = 1
Dominant species: Manitoba maple

Compartment 9292: FHR = 2
Dominant species: basswood
Comments: anthracnose; tar spot on maple; discoloration of basswood foliage; harvested

Special Notes:
Forest health monitoring plots established in all compartments of the woodland.

*FHR = Forest Health Rating

Biotic and Abiotic Disturbances

- Tar spot on maple
- Anthracnose
- Discolouration of foliage
- Harvested

Ash Status

Presence of ash decline and mortality due to emerald ash borer was recorded in each compartment.

Compartment	Decline	Mortality
9282	Drainage	Drainage
9301	N/A	N/A
9290		
9291		✓
9292	✓	✓



*Blank cells indicate that decline or mortality is not present in the compartment

Invasive Plant Cover



Buckthorn



Garlic mustard



Periwinkle



Wild grape vine

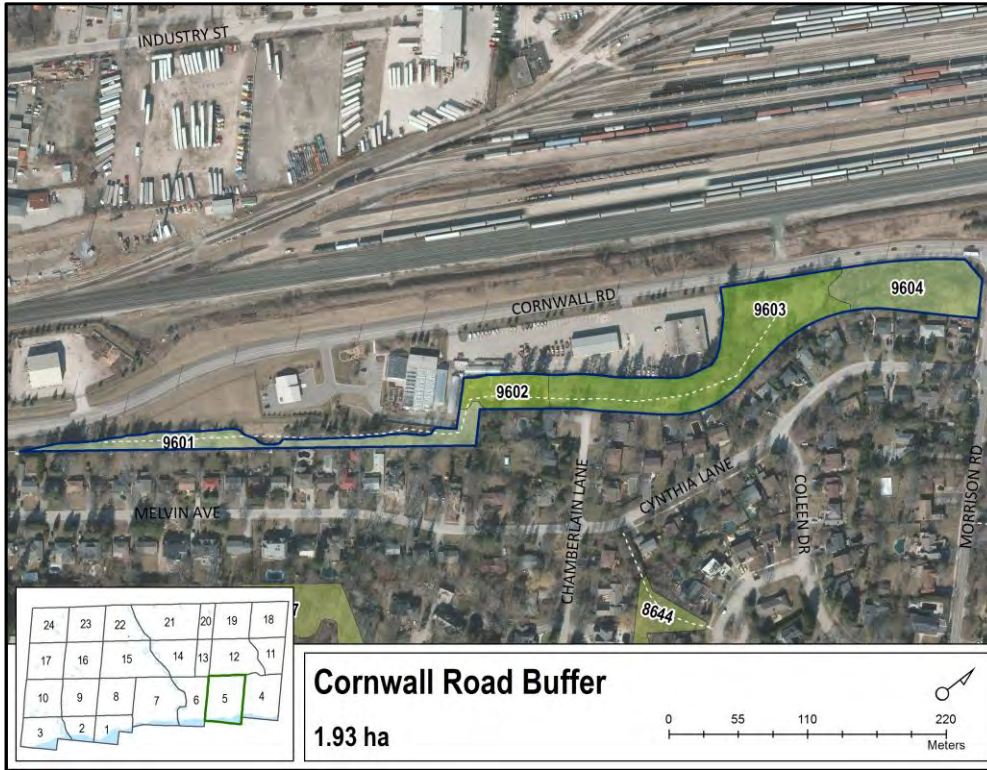


Forest Health Report Card

Forest Health Rating (FHR)

Cornwall Road Buffer Woodland ID 30 (Zone 5)

- 1 Healthy with no obvious forest health issues
- 2 Moderately healthy, minor issues and <30% mortality
- 3 Health affected by obvious issues and >30% mortality



Woodland Summary

Overall, the woodland is moderately healthy with minor issues affecting the dominant tree canopy. Ash decline and mortality due to emerald ash borer was observed in each compartment of the woodland. No biotic disturbances were present. Abiotic disturbance in the woodland included recent storm damage. A total of 6 invasive plants were present, with buckthorn present in all forest compartments. The five most prevalent species are displayed below.

By Compartment:

Compartment 9601: FHR = 1
Dominant species: mixed maple
Comments: storm damage

Compartment 9602: FHR = 1
Dominant species: black walnut

Compartment 9603: FHR = 1
Dominant species: Austrian pine

Compartment 9604: FHR = 3
Dominant species: white ash

Biotic and Abiotic Disturbances

- Storm damage

Ash Status

Presence of ash decline and mortality due to emerald ash borer was recorded in each compartment.

Compartment	Decline	Mortality
9601	✓	✓
9602	✓	✓
9603		✓
9604	✓	✓



*Blank cells indicate that decline or mortality is not present in the compartment

*FHR = Forest Health Rating

Invasive Plant Cover



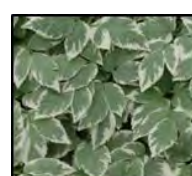
Buckthorn



Garlic mustard



Purple loosestrife



Goutweed



Wild grape vine



Forest Health Report Card

Forest Health Rating (FHR)

Chamberlain Walk Park ✓

Woodland ID 32 (Zone 5)

1	Healthy with no obvious forest health issues
2	Moderately healthy, minor issues and <30% mortality
3	Health affected by obvious issues and >30% mortality



Woodland Summary

Overall, the woodland is moderately healthy with minor issues affecting the dominant tree canopy. Ash decline and mortality due to emerald ash borer was observed in the woodland. No biotic disturbance was present. Abiotic disturbance in the woodland included storm damage on willow. A total of 4 invasive plants were recorded in the woodland.

By Compartment:

Compartment 8644: FHR = 2
 Dominant species: white ash
 Comments: storm damage on willow

Biotic and Abiotic Disturbances

- Storm damage on willow

Ash Status

Presence of ash decline and mortality due to emerald ash borer was recorded in each compartment.

Compartment	Decline	Mortality
8644	✓	✓



*Blank cells indicate that decline or mortality is not present in the compartment

*FHR = Forest Health Rating

Invasive Plant Cover



Buckthorn



Garlic mustard



Periwinkle



Wild grape vine



Forest Health Report Card

Ford Woods

Woodland ID 34 (Zone 12)

Forest Health Rating (FHR)

- 1 Healthy with no obvious forest health issues
- ✓ 2 Moderately healthy, minor issues and <30% mortality
- 3 Health affected by obvious issues and >30% mortality



Woodland Summary

Overall, the woodland is moderately healthy with minor issues affecting the dominant tree canopy. Ash decline and mortality due to emerald ash borer was observed in the woodland. No biotic or abiotic disturbances were present. A total of 2 invasive plants were present, buckthorn and garlic mustard. Both species were recorded in all forest compartments.

By Compartment:

Compartment 642: FHR = 3
Dominant species: white ash

Compartment 644: FHR = 1
Dominant species: mixed pine

Compartment 645: FHR = 1
Dominant species: Manitoba maple

Compartment 646: FHR = 2
Dominant species: willow

Biotic and Abiotic Disturbances

- No disturbances present

Ash Status

Presence of ash decline and mortality due to emerald ash borer was recorded in each compartment.

Compartment	Decline	Mortality
642	✓	✓
644		
645		✓
646		✓



*Blank cells indicate that decline or mortality is not present in the compartment

*FHR = Forest Health Rating

Invasive Plant Cover



Buckthorn



Garlic mustard



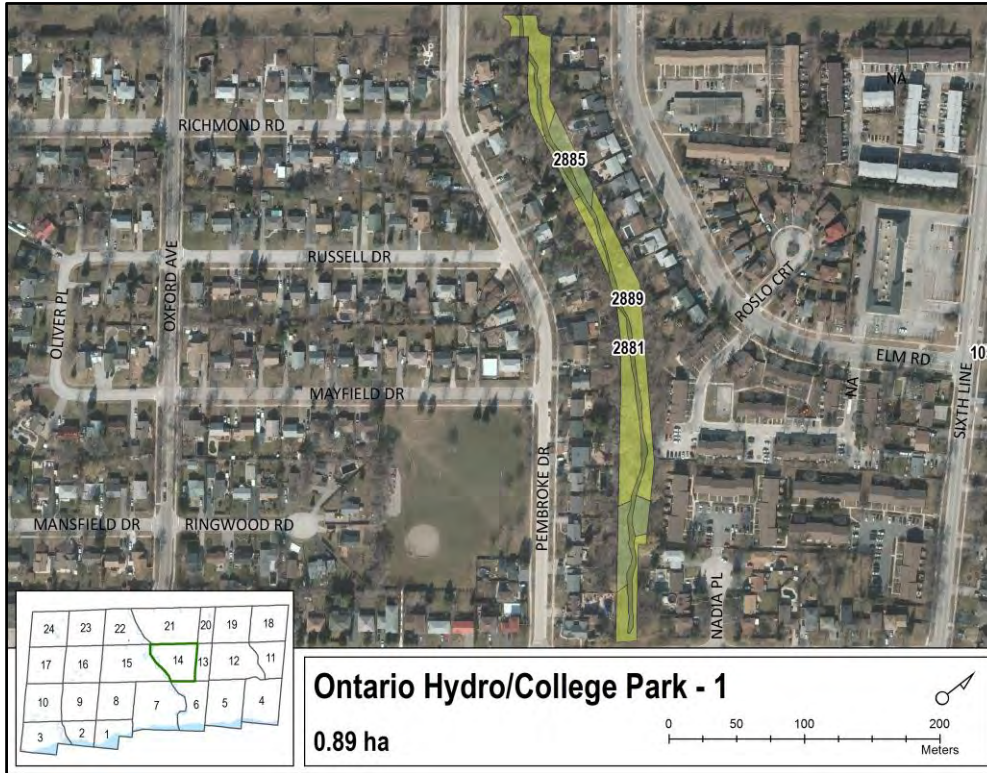
Forest Health Report Card

Ontario Hydro / College Park 1 Woodland ID 43 (Zone 14)

Forest Health Rating (FHR)



- 1 Healthy with no obvious forest health issues
- 2 Moderately healthy, minor issues and <30% mortality
- 3 Health affected by obvious issues and >30% mortality



Woodland Summary

Overall, the woodland is moderately healthy with minor issues affecting the dominant tree canopy. Some ash mortality due to emerald ash borer was observed in the woodland. No biotic disturbances were present. Abiotic disturbance in the woodland included blowdown and storm damage. A total of 4 invasive plants were present, each recorded in all forest compartments.

By Compartment:

Compartment 2881:
Drainage

Compartment 2885: FHR = 2
Dominant species: Manitoba maple
Comments: blowdown; storm damage

Compartment 2889: FHR = 2
Dominant species: willow
Comments: storm damage

Biotic and Abiotic Disturbances

- Blowdown
- Storm damage

Ash Status

Presence of ash decline and mortality due to emerald ash borer was recorded in each compartment.

Compartment	Decline	Mortality
2881	Drainage	Drainage
2885		
2889		✓



*Blank cells indicate that decline or mortality is not present in the compartment

*FHR = Forest Health Rating

Invasive Plant Cover



Buckthorn



Garlic mustard



English ivy



Periwinkle



Forest Health Report Card

Winston Woods

Woodland ID 60 (Zone 18)

Forest Health Rating (FHR)

- 1 Healthy with no obvious forest health issues
- ✓ 2 Moderately healthy, minor issues and <30% mortality
- 3 Health affected by obvious issues and >30% mortality



Woodland Summary

Overall, the woodland is moderately healthy with minor issues affecting the dominant tree canopy. Ash mortality due to emerald ash borer was observed in each compartment of the woodland. Gypsy moth and harvesting of ash trees were the most prevalent disturbances recorded. A total of 2 invasive plants were present.

By Compartment:

Compartment 335: FHR = 2
Dominant species: mixed oak species
Comments: gypsy moth; harvesting of ash trees

Compartment 336: FHR = 2
Dominant species: mixed ash species
Comments: gypsy moth; leaf rollers on basswood; leaf miners on elm; harvesting of ash trees

Compartment 337: FHR = 2
Dominant species: white ash
Comments: gypsy moth on oak and hickory; harvesting of ash trees

Compartment 338: FHR = 2
Dominant species: red oak
Comments: gypsy moth egg masses

Compartment 339: FHR = 2
Dominant species: mixed oak species
Comments: gypsy moth on hickory and oak; tar spot on maple

Compartment 340: FHR = 2
Dominant species: shagbark hickory
Comments: gypsy moth; rust on hawthorn

*FHR = Forest Health Rating

Biotic and Abiotic Disturbances

- Gypsy moth
- Leaf rollers
- Leaf miners
- Harvesting of ash trees

Ash Status

Presence of ash decline and mortality due to emerald ash borer was recorded in each compartment.

Compartment	Decline	Mortality
335		✓
336		✓
337		✓
338		✓
339		✓
340		✓



*Blank cells indicate that decline or mortality is not present in the compartment

Invasive Plant Cover



Buckthorn



Garlic mustard



LALLEMAND PLANT CARE

Forest Health Report Card

Forest Health Rating (FHR)

Ardleigh Park

Woodland ID 72 (Zone 4)

- 1 Healthy with no obvious forest health issues
- ✓ 2 Moderately healthy, minor issues and <30% mortality
- 3 Health affected by obvious issues and >30% mortality



Woodland Summary

Overall, the woodland is moderately healthy with minor issues affecting the dominant tree canopy. Ash decline and mortality due to emerald ash borer was observed in the woodland. Biotic disturbance of tar spot on Norway maple was present, but no abiotic disturbances were recorded. A total of 4 invasive plants were present in the woodland.

By Compartment:

Compartment 8329: FHR = 2
 Dominant species: white ash
 Comments: tar spot on Norway maple

Biotic and Abiotic Disturbances

- Tar spot on Norway maple

Ash Status

Presence of ash decline and mortality due to emerald ash borer was recorded in each compartment.

Compartment	Decline	Mortality
8329	✓	✓



*Blank cells indicate that decline or mortality is not present in the compartment

*FHR = Forest Health Rating

Invasive Plant Cover



Buckthorn



Garlic mustard



Periwinkle



Wild grape vine



Forest Health Report Card

Forest Health Rating (FHR)

Interprovincial Pipeline 2

Woodland ID 95 (Zone 21)

- 1 Healthy with no obvious forest health issues
- ✓ 2 Moderately healthy, minor issues and <30% mortality
- 3 Health affected by obvious issues and >30% mortality



Woodland Summary

Overall, the woodland is moderately healthy with minor issues affecting the dominant tree canopy. Ash mortality due to emerald ash borer was observed in the woodland. Biotic disturbance of gypsy moth and Dutch elm disease were present. No abiotic disturbances were recorded in the woodland. A total of 4 invasive plants were present.

By Compartment:

Compartment 1303: FHR = 1
Dominant species: no trees

Compartment 1305: FHR = 2
Dominant species: white elm
Comments: gypsy moth on oak; Dutch elm disease

Compartment 1307: FHR = 2
Dominant species: mixed oak species
Comments: gypsy moth on oak and hickory; Dutch elm disease

Biotic and Abiotic Disturbances

- Gypsy moth
- Dutch elm disease

Ash Status

Presence of ash decline and mortality due to emerald ash borer was recorded in each compartment.

Compartment	Decline	Mortality
1303		
1305		✓
1307		✓



*Blank cells indicate that decline or mortality is not present in the compartment

*FHR = Forest Health Rating

Invasive Plant Cover



Buckthorn



Garlic mustard



Purple loosestrife



Wild grape vine



Phragmites



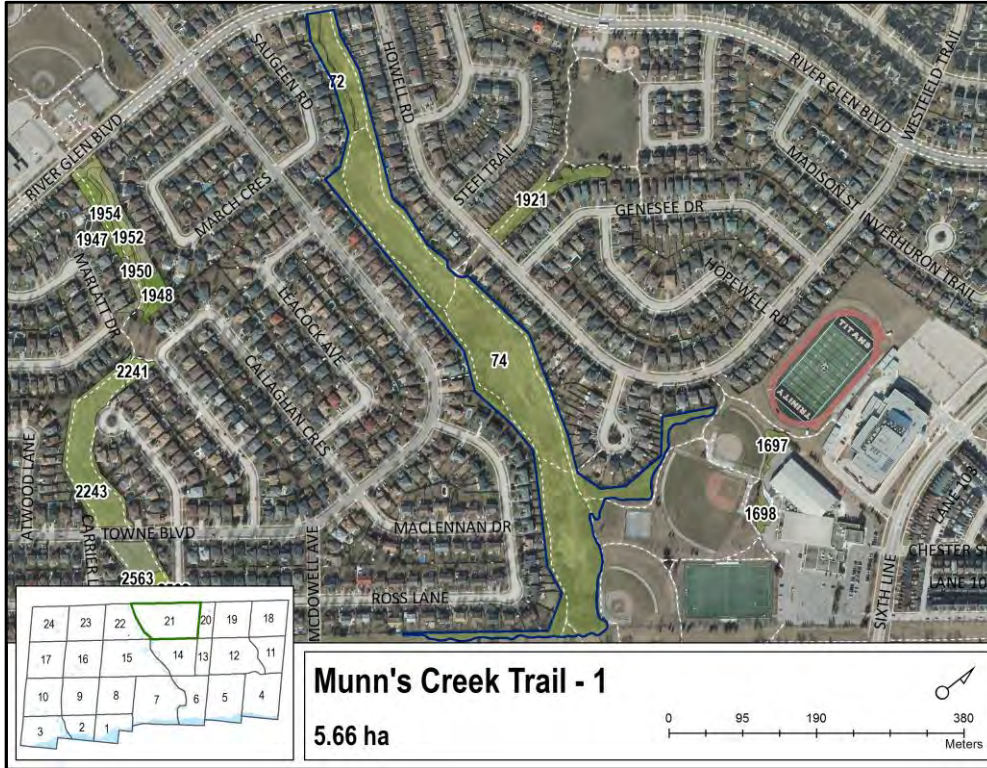
Forest Health Report Card

Forest Health Rating (FHR)

Munn's Creek Trail 1

Woodland ID 103 (Zone 21)

- 1 Healthy with no obvious forest health issues
- ✓ 2 Moderately healthy, minor issues and <30% mortality
- 3 Health affected by obvious issues and >30% mortality



Woodland Summary

Overall, the woodland is moderately healthy with minor issues affecting the dominant tree canopy. Ash decline and mortality due to emerald ash borer was observed in the woodland. Numerous biotic disturbances were present. Abiotic disturbance was recorded as storm damage in the woodland. A total of 5 invasive plants were observed.

By Compartment:

Compartment 72:
Drainage

Compartment 74: FHR = 2
Dominant species: mixed maple species
Comments: gypsy moth on oak; Dutch elm disease; powdery mildew; foliar rust on hawthorn; tar spot; storm damage

Special Notes:
Forest health monitoring plots established in all compartments of the woodland.

*FHR = Forest Health Rating

Biotic and Abiotic Disturbances

- Gypsy moth
- Dutch elm disease
- Powdery mildew
- Foliar rust on hawthorn
- Tar spot
- Storm damage

Ash Status

Presence of ash decline and mortality due to emerald ash borer was recorded in each compartment.

Compartment	Decline	Mortality
72	Drainage	Drainage
74	✓	✓



*Blank cells indicate that decline or mortality is not present in the compartment

Invasive Plant Cover



Buckthorn



Garlic mustard



Purple loosestrife



Phragmites



Wild grape vine



Forest Health Report Card

River Oaks Park

Woodland ID 108 (Zone 21)

Forest Health Rating (FHR)

- 1 Healthy with no obvious forest health issues
- ✓ 2 Moderately healthy, minor issues and <30% mortality
- 3 Health affected by obvious issues and >30% mortality



Woodland Summary

Overall, the woodland is moderately healthy with minor issues affecting the dominant tree canopy. Biotic disturbance of leaf miner, defoliation, and foliar rusts were present in the woodland. No abiotic disturbance was recorded. A total of 2 invasive plants were present, buckthorn and garlic mustard.

By Compartment:

Compartment 1697: FHR = 2
 Dominant species: white pine
 Comments: leaf miner on basswood; defoliation of oak; foliar rust on cherry and hawthorn

Biotic and Abiotic Disturbances

- Leaf miner on basswood
- Defoliation on oak
- Foliar rusts on cherry and hawthorn

Ash Status

Presence of ash decline and mortality due to emerald ash borer was recorded in each compartment.

Compartment	Decline	Mortality
1697		



*Blank cells indicate that decline or mortality is not present in the compartment

Special Notes:

Forest health monitoring plots established in all compartments of the woodland.

*FHR = Forest Health Rating

Invasive Plant Cover



Buckthorn



Garlic mustard



Forest Health Report Card

Forest Health Rating (FHR)

McCraney Creek Trail North 2 Woodland ID 134 (Zone 22)

- 1 Healthy with no obvious forest health issues
- ✓ 2 Moderately healthy, minor issues and <30% mortality
- 3 Health affected by obvious issues and >30% mortality



Woodland Summary

Overall, the woodland is moderately healthy with minor issues affecting the dominant tree canopy. Ash mortality due to emerald ash borer was observed in the woodland. No biotic or abiotic disturbances were present. A total of 3 invasive plants were recorded in the woodland.

By Compartment:

Compartment 3953:
Drainage

Compartment 3954: FHR = 1
Dominant species: white pine

Compartment 3955: FHR = 2
Dominant species: silver maple
Comments: significant ash mortality

Biotic and Abiotic Disturbances

- No disturbances present

Ash Status

Presence of ash decline and mortality due to emerald ash borer was recorded in each compartment.

Compartment	Decline	Mortality
3953	Drainage	Drainage
3954		✓
3955		✓



*Blank cells indicate that decline or mortality is not present in the compartment

*FHR = Forest Health Rating

Invasive Plant Cover



Garlic mustard



Purple loosestrife



Wild grape vine



Forest Health Report Card

Cornwall Road Sports Park

Woodland ID 165 (Zone 6)

Forest Health Rating (FHR)



1	Healthy with no obvious forest health issues
2	Moderately healthy, minor issues and <30% mortality
3	Health affected by obvious issues and >30% mortality



Woodland Summary

Overall, the woodland is moderately healthy with minor issues affecting the dominant tree canopy. Ash decline and mortality due to emerald ash borer was observed in the woodland. Biotic disturbance of gypsy moth defoliation was present. No abiotic disturbance in the woodland was recorded. A total of 4 invasive plants were observed in the forest compartment.

By Compartment:

Compartment 7687: FHR = 2
 Dominant species: white ash
 Comments: gypsy moth defoliation; decline in intermediate ash

Biotic and Abiotic Disturbances

- Gypsy moth defoliation

Ash Status

Presence of ash decline and mortality due to emerald ash borer was recorded in each compartment.

Compartment	Decline	Mortality
7687	✓	✓



*Blank cells indicate that decline or mortality is not present in the compartment

*FHR = Forest Health Rating

Invasive Plant Cover



Buckthorn



Purple loosestrife



Wild grape vine



Phragmites



Forest Health Report Card

Forest Health Rating (FHR)

Westgate Park

Woodland ID 174 (Zone 7)

- 1 Healthy with no obvious forest health issues
- ✓ 2 Moderately healthy, minor issues and <30% mortality
- 3 Health affected by obvious issues and >30% mortality



Woodland Summary

Overall, the woodland is moderately healthy with minor issues affecting the dominant tree canopy. Ash decline and mortality due to emerald ash borer was observed in the woodland. No biotic disturbance was present. Abiotic disturbance in the woodland included blowdown of trees. A total of 2 invasive plants were present, with buckthorn and garlic mustard present in all forest compartments.

By Compartment:

Compartment 13785:
Drainage

Compartment 13789: FHR = 1
Dominant species: Norway spruce
Comments: blowdown

Compartment 14087: FHR = 2
Dominant species: white ash

Biotic and Abiotic Disturbances

- Blowdown

Ash Status

Presence of ash decline and mortality due to emerald ash borer was recorded in each compartment.

Compartment	Decline	Mortality
13785	Drainage	Drainage
13789		✓
14087	✓	✓



*Blank cells indicate that decline or mortality is not present in the compartment

*FHR = Forest Health Rating

Invasive Plant Cover



Buckthorn



Garlic mustard



Forest Health Report Card

Sixteen Mile Creek South QEW 2

Woodland ID 185 (Zone 7)

Forest Health Rating (FHR)

- 1 Healthy with no obvious forest health issues
- ✓ 2 Moderately healthy, minor issues and <30% mortality
- 3 Health affected by obvious issues and >30% mortality



Woodland Summary

Overall, the woodland is moderately healthy with minor issues affecting the dominant tree canopy. Biotic disturbance of tar spot on maple was present. No abiotic disturbance was recorded in the woodland. General decline in maples was noted due to thinning crowns and dead branches. A total of 2 invasive plants were present in the forest compartment, buckthorn and garlic mustard.

By Compartment:

Compartment 12490: FHR = 2
Dominant species: sugar maple
Comments: tar spot; crown thinning in maple trees

Biotic and Abiotic Disturbances

- Tar spot

Ash Status

Presence of ash decline and mortality due to emerald ash borer was recorded in each compartment.

Compartment	Decline	Mortality
12490		



*Blank cells indicate that decline or mortality is not present in the compartment

*FHR = Forest Health Rating

Invasive Plant Cover



Buckthorn



Garlic mustard



Forest Health Report Card

Birch Hill Promenade Woodland ID 192 (Zone 7)

Forest Health Rating (FHR)

- 1 Healthy with no obvious forest health issues
- ✓ 2 Moderately healthy, minor issues and <30% mortality
- 3 Health affected by obvious issues and >30% mortality



Woodland Summary

Overall, the woodland is moderately healthy with minor issues affecting the dominant tree canopy. Some ash decline and mortality due to emerald ash borer was observed in the woodland. Tar spot was the only biotic disturbance present. No abiotic disturbance was recorded in the woodland. Garlic mustard was the only invasive plant present.

By Compartment:

Compartment 13766: FHR = 1
Dominant species: Scots pine

Compartment 13767: FHR = 1
Dominant species: Austrian pine
Comments: browning on pine foliage

Compartment 13768: FHR = 1
Dominant species: willow

Compartment 13769: FHR = 1
Dominant species: balsam poplar

Compartment 13771: FHR = 2
Dominant species: white ash
Comments: tar spot; white ash and white pine thin foliage and discolouration

Biotic and Abiotic Disturbances

- Tar spot

Ash Status

Presence of ash decline and mortality due to emerald ash borer was recorded in each compartment.

Compartment	Decline	Mortality
13766		
13767		
13768		
13769		
13771	✓	✓



*Blank cells indicate that decline or mortality is not present in the compartment

*FHR = Forest Health Rating

Invasive Plant Cover



Garlic mustard



Forest Health Report Card

Thornlea Park

Woodland ID 196 (Zone 2)

Forest Health Rating (FHR)

- 1 Healthy with no obvious forest health issues
- ✓ 2 Moderately healthy, minor issues and <30% mortality
- 3 Health affected by obvious issues and >30% mortality



Woodland Summary

Overall, the woodland is moderately healthy with minor issues affecting the dominant tree canopy. No biotic disturbances were present in the woodland. Abiotic disturbance included recent harvesting of ash trees. A total of 4 invasive plants were present in the forest compartment.

By Compartment:

Compartment 14401:
Drainage

Compartment 14404: FHR = 2
Dominant species: green ash
Comments: harvesting of ash trees

Biotic and Abiotic Disturbances

- Harvesting of ash trees

Ash Status

Presence of ash decline and mortality due to emerald ash borer was recorded in each compartment.

Compartment	Decline	Mortality
14401	Drainage	Drainage
14404		



*Blank cells indicate that decline or mortality is not present in the compartment

Special Notes:

Forest health monitoring plots established in all compartments of the woodland.

*FHR = Forest Health Rating

Invasive Plant Cover



Buckthorn



Wild grape vine



Purple loosestrife



Bindweed



Forest Health Report Card

Forest Health Rating (FHR)

Village Wood Park

Woodland ID 209 (Zone 3)

- 1 Healthy with no obvious forest health issues
- ✓ 2 Moderately healthy, minor issues and <30% mortality
- 3 Health affected by obvious issues and >30% mortality



Woodland Summary

Overall, the woodland is moderately healthy with minor issues affecting the dominant tree canopy. Ash decline and mortality due to emerald ash borer was observed in the woodland. Biotic disturbance of Dutch elm disease was present. Abiotic disturbance in the woodland included storm damage on white pine. A total of 3 invasive plants were present, with buckthorn and garlic mustard present in all forest compartments.

By Compartment:

Compartment 229:
Drainage

Compartment 230: FHR = 1
Dominant species: white pine
Comments: Dutch elm disease; storm damage on white pine

Compartment 231: FHR = 1
Dominant species: green ash

Compartment 232: FHR = 2
Dominant species: white ash

Biotic and Abiotic Disturbances

- Dutch elm disease
- Storm damage

Ash Status

Presence of ash decline and mortality due to emerald ash borer was recorded in each compartment.

Compartment	Decline	Mortality
229	Drainage	Drainage
230	✓	✓
231	✓	
232	✓	✓



*Blank cells indicate that decline or mortality is not present in the compartment

*FHR = Forest Health Rating

Invasive Plant Cover



Buckthorn



Garlic mustard



Wild grape vine



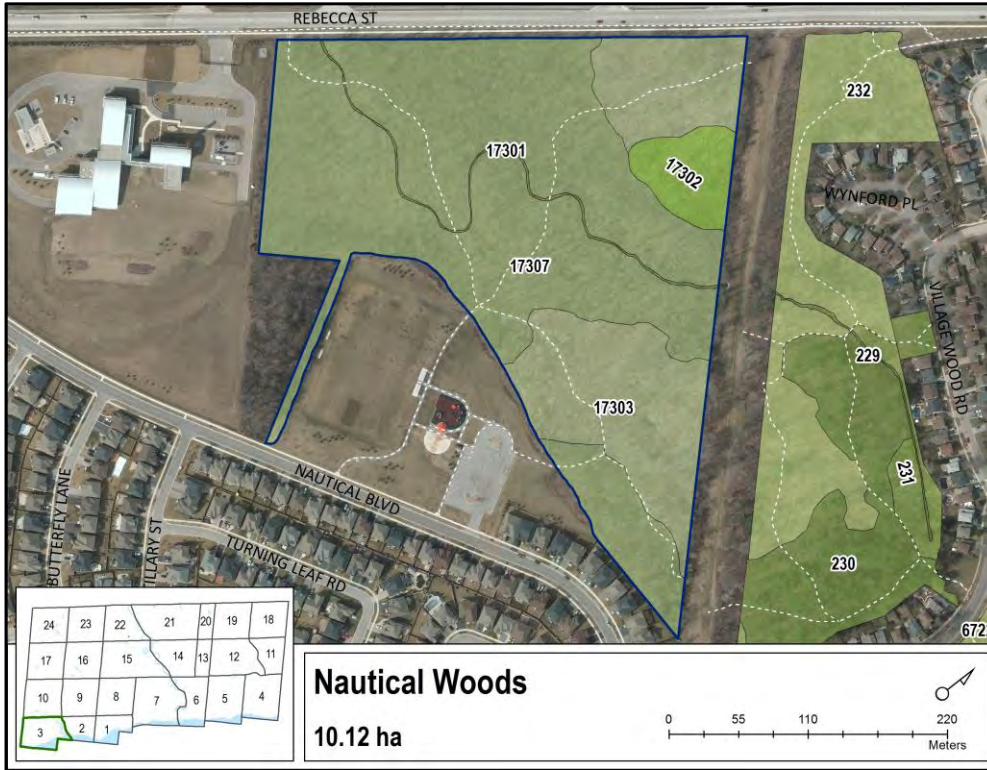
Forest Health Report Card

Forest Health Rating (FHR)

Nautical Woods

Woodland ID 211 (Zone 3)

- 1 Healthy with no obvious forest health issues
- ✓ 2 Moderately healthy, minor issues and <30% mortality
- 3 Health affected by obvious issues and >30% mortality



Woodland Summary

Overall, the woodland is moderately healthy with minor issues affecting the dominant tree canopy. Ash decline and mortality due to emerald ash borer was observed in the woodland. Biotic disturbance of anthracnose on red oak was present. No abiotic disturbance was recorded in the woodland. A total of 3 invasive plants were present, with buckthorn present in all forest compartments.

By Compartment:

Compartment 17301:
Drainage

Compartment 17302: FHR = 1
Dominant species: red oak

Compartment 17303: FHR = 1
Dominant species: red oak
Comments: anthracnose on red oak

Compartment 17307: FHR = 3
Dominant species: green ash

Biotic and Abiotic Disturbances

- Anthracnose

Ash Status

Presence of ash decline and mortality due to emerald ash borer was recorded in each compartment.

Compartment	Decline	Mortality
17301	Drainage	Drainage
17302	✓	
17303	✓	✓
17307	✓	✓



*Blank cells indicate that decline or mortality is not present in the compartment

*FHR = Forest Health Rating

Invasive Plant Cover



Buckthorn



Garlic mustard



Purple loosestrife



Forest Health Report Card

Sheldon Creek Park Woodland ID 213 (Zone 3)

Forest Health Rating (FHR)

- 1 Healthy with no obvious forest health issues
- ✓ 2 Moderately healthy, minor issues and <30% mortality
- 3 Health affected by obvious issues and >30% mortality



Woodland Summary

Overall, the woodland is moderately healthy with minor issues affecting the dominant tree canopy. Ash decline and mortality due to emerald ash borer was observed in the woodland. Minor biotic disturbance of tar spot on understory sugar maple was present. No abiotic disturbance was recorded in the woodland. A total of 2 invasive plants were present in the forest compartment, buckthorn and garlic mustard.

By Compartment:

Compartment 16641:
Drainage

Compartment 16643: FHR = 2
Dominant species: willow
Comments: tar spot on understory sugar maple

Biotic and Abiotic Disturbances

- Tar spot on understory sugar maple

Ash Status

Presence of ash decline and mortality due to emerald ash borer was recorded in each compartment.

Compartment	Decline	Mortality
16641	Drainage	Drainage
16643	✓	✓



*Blank cells indicate that decline or mortality is not present in the compartment

*FHR = Forest Health Rating

Invasive Plant Cover



Buckthorn



Garlic mustard



Forest Health Report Card

Creek Path Woods Woodland ID 218 (Zone 3)

Forest Health Rating (FHR)

- 1 Healthy with no obvious forest health issues
- ✓ 2 Moderately healthy, minor issues and <30% mortality
- 3 Health affected by obvious issues and >30% mortality



Woodland Summary

Overall, the woodland is moderately healthy with minor issues affecting the dominant tree canopy. Ash decline and mortality due to emerald ash borer was observed in the woodland. Biotic disturbance of gypsy moth was present in all three forest compartments. No abiotic disturbance was recorded in the woodland. A total of 3 invasive plants were present, with buckthorn present in all forest compartments.

By Compartment:

Compartment 16337:
Drainage

Compartment 16339: FHR = 2
Dominant species: white spruce
Comments: gypsy moth defoliation on small oaks

Compartment 16345: FHR = 1
Dominant species: pear
Comments: gypsy moth defoliation on young oaks and basswood

Compartment 16347: FHR = 2
Dominant species: hawthorn
Comments: gypsy moth defoliation on young oaks and basswood; poplar in compartment is dead and dying

*FHR = Forest Health Rating

Biotic and Abiotic Disturbances

- Gypsy moth

Ash Status

Presence of ash decline and mortality due to emerald ash borer was recorded in each compartment.

Compartment	Decline	Mortality
16337	Drainage	Drainage
16339		✓
16345	✓	✓
16347	✓	



*Blank cells indicate that decline or mortality is not present in the compartment

Invasive Plant Cover



Buckthorn



Wild grape vine



Purple loosestrife

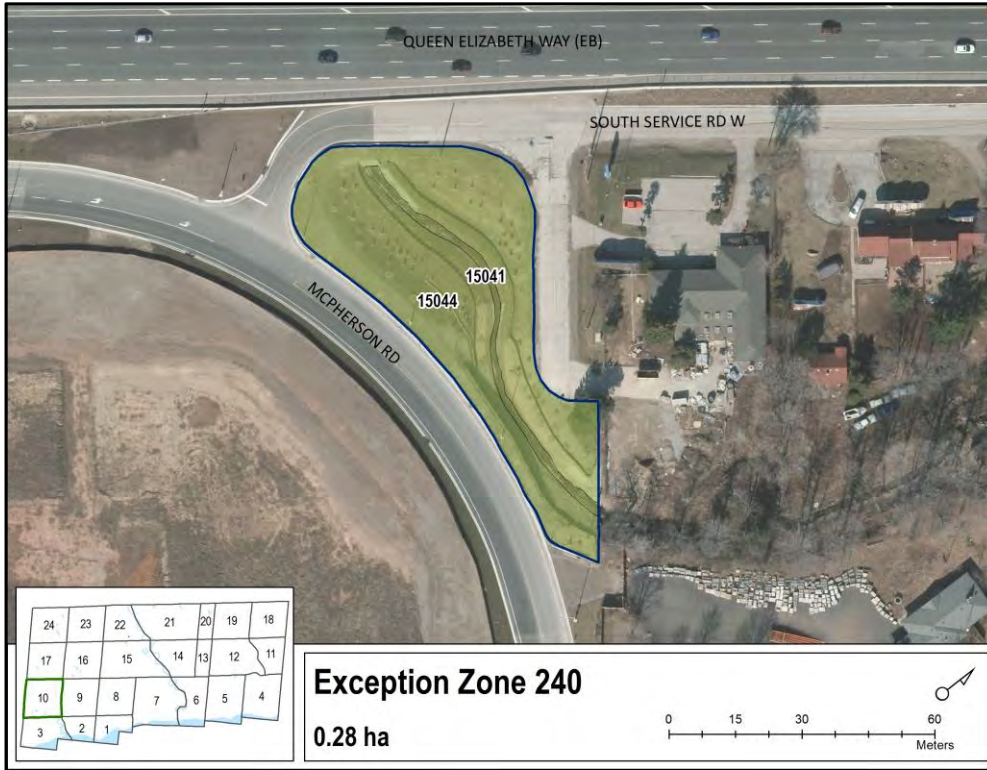


Forest Health Report Card

Exception Zone 240 Woodland ID 240 (Zone 10)

Forest Health Rating (FHR)

- 1 Healthy with no obvious forest health issues
- ✓ 2 Moderately healthy, minor issues and <30% mortality
- 3 Health affected by obvious issues and >30% mortality



Woodland Summary

Overall, the woodland is moderately healthy with minor issues affecting the dominant tree canopy. No biotic disturbances were present in the woodland. Abiotic disturbance included drought. The woodland itself was assessed as a poor site for growing condition of trees. No invasive plants were observed.

By Compartment:

Compartment 15041:
Drainage

Compartment 15044: FHR = 2
Dominant species: silver maple
Comments: drought; poor growing conditions

Biotic and Abiotic Disturbances

- Drought

Ash Status

Presence of ash decline and mortality due to emerald ash borer was recorded in each compartment.

Compartment	Decline	Mortality
15041	Drainage	Drainage
15044		



*Blank cells indicate that decline or mortality is not present in the compartment

*FHR = Forest Health Rating

Invasive Plant Cover

No Invasive Plants Present



Forest Health Report Card

Falling Green Pond Woodland ID 261 (Zone 23)

Forest Health Rating (FHR)

- 1 Healthy with no obvious forest health issues
- ✓ 2 Moderately healthy, minor issues and <30% mortality
- 3 Health affected by obvious issues and >30% mortality



Woodland Summary

Overall, the woodland is moderately healthy with minor issues affecting the dominant tree canopy. Ash decline and mortality due to emerald ash borer was observed in the woodland. No specific biotic or abiotic disturbances were present. Discolouration in maple crowns and general decline in ash trees was recorded. No invasive plants were observed in the woodland.

By Compartment:

Compartment 17:
Drainage

Compartment 19: FHR = 2
Dominant species: ash species
Comments: foliar discolouration in maple; general decline in ash trees

Biotic and Abiotic Disturbances

- Foliar discolouration in maple

Ash Status

Presence of ash decline and mortality due to emerald ash borer was recorded in each compartment.

Compartment	Decline	Mortality
17	Drainage	Drainage
19	✓	✓



*Blank cells indicate that decline or mortality is not present in the compartment

*FHR = Forest Health Rating

Invasive Plant Cover

No Invasive Plants Present



Forest Health Report Card

Aspen Forest Park Woodland ID 79 (Zone 4)

Forest Health Rating (FHR)

- 1 Healthy with no obvious forest health issues
- 2 Moderately healthy, minor issues and <30% mortality
- ✓ 3 Health affected by obvious issues and >30% mortality



Woodland Summary

Overall, the health of the woodland is affected by obvious issues in the dominant tree canopy. Significant ash decline and mortality due to emerald ash borer was observed in the woodland. No other biotic or abiotic disturbances were present. A total of 5 invasive plants were recorded in the forest compartment.

By Compartment:

Compartment 6216: FHR = 3
Dominant species: white ash

Biotic and Abiotic Disturbances

- No disturbances present

Ash Status

Presence of ash decline and mortality due to emerald ash borer was recorded in each compartment.

Compartment	Decline	Mortality
6216	✓	✓



*Blank cells indicate that decline or mortality is not present in the compartment

*FHR = Forest Health Rating

Invasive Plant Cover



Buckthorn



Garlic mustard



Purple loosestrife



Phragmites



Wild grape vine



Forest Health Report Card

Cornwall Road Sports Park

Woodland ID 169 (Zone 6)

Forest Health Rating (FHR)

- 1 Healthy with no obvious forest health issues
- 2 Moderately healthy, minor issues and <30% mortality
- 3 Health affected by obvious issues and >30% mortality



Woodland Summary

Overall, the health of the woodland is affected by obvious issues in the dominant tree canopy. Ash decline and mortality due to emerald ash borer was observed in the woodland. No biotic disturbances were present. Abiotic disturbance in the woodland included recent harvesting of ash trees. A total of 4 invasive plants were present, with buckthorn and wild grape vine present in all forest compartments.

By Compartment:

Compartment 7681:
Drainage

Compartment 7682: FHR = 2
Dominant species: black walnut

Compartment 7685: FHR = 3
Dominant species: white ash
Comments: harvesting of ash trees

Biotic and Abiotic Disturbances

- Harvested

Ash Status

Presence of ash decline and mortality due to emerald ash borer was recorded in each compartment.

Compartment	Decline	Mortality
7681	Drainage	Drainage
7682		✓
7685	✓	✓



*Blank cells indicate that decline or mortality is not present in the compartment

*FHR = Forest Health Rating

Invasive Plant Cover



Buckthorn



Garlic mustard



Purple loosestrife



Wild grape vine



Forest Health Report Card

Chalmers Park

Woodland ID 210 (Zone 3)

Forest Health Rating (FHR)

- 1 Healthy with no obvious forest health issues
- 2 Moderately healthy, minor issues and <30% mortality
- ✓ 3 Health affected by obvious issues and >30% mortality



Woodland Summary

Overall, the health of the woodland is affected by obvious issues in the dominant tree canopy. Significant ash decline and mortality due to emerald ash borer was observed in the woodland. No other biotic or abiotic disturbances were present. A total of 2 invasive plants were present, buckthorn and garlic mustard. Each was present in both forest compartments.

By Compartment:

Compartment 6721: FHR = 2
Dominant species: silver maple

Compartment 6722: FHR = 3
Dominant species: white ash

Biotic and Abiotic Disturbances

- No disturbances present

Ash Status

Presence of ash decline and mortality due to emerald ash borer was recorded in each compartment.

Compartment	Decline	Mortality
6721		✓
6722	✓	✓



*Blank cells indicate that decline or mortality is not present in the compartment

*FHR = Forest Health Rating

Invasive Plant Cover



Buckthorn



Garlic mustard



Forest Health Report Card

Brook Valley Park Woodland ID 221 (Zone 8)

Forest Health Rating (FHR)

- 1 Healthy with no obvious forest health issues
- 2 Moderately healthy, minor issues and <30% mortality
- ✓ 3 Health affected by obvious issues and >30% mortality



Woodland Summary

Overall, the health of the woodland is affected by obvious issues in the dominant tree canopy. Significant ash decline and mortality due to emerald ash borer was observed in the woodland. No other biotic disturbances were present. Abiotic disturbance in the woodland included storm damage. A total of 4 invasive plants were present, with buckthorn and garlic mustard present in all forest compartments.

By Compartment:

- Compartment 167:
Only grass, no trees to survey
- Compartment 168:
Drainage

Compartment 169: FHR = 3
Dominant species: black walnut
Comments: storm damage

Compartment 170: FHR = 3
Dominant species: mixed ash

Compartment 172: FHR = 3
Dominant species: white ash

Special Notes:

Forest health monitoring plots established in all compartments of the woodland.

*FHR = Forest Health Rating

Biotic and Abiotic Disturbances

- Storm damage

Ash Status

Presence of ash decline and mortality due to emerald ash borer was recorded in each compartment.

Compartment	Decline	Mortality
167	Drainage	Drainage
168	Not surveyed	Not surveyed
169	✓	✓
170	✓	✓
172	✓	✓



*Blank cells indicate that decline or mortality is not present in the compartment

Invasive Plant Cover



Buckthorn



Garlic mustard



Periwinkle



Wild grape vine



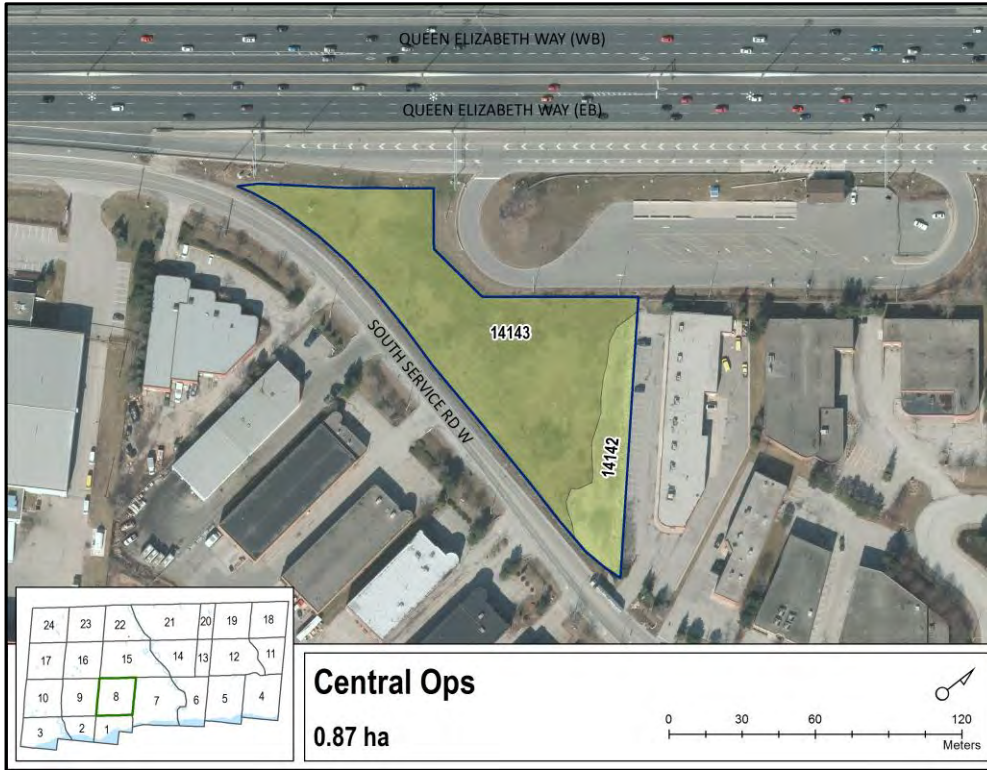
Forest Health Report Card

Central Ops

Woodland ID 223 (Zone 8)

Forest Health Rating (FHR)

- 1 Healthy with no obvious forest health issues
- 2 Moderately healthy, minor issues and <30% mortality
- ✓ 3 Health affected by obvious issues and >30% mortality



Woodland Summary

Overall, the health of the woodland is affected by obvious issues in the dominant tree canopy. Biotic disturbance of Dutch elm disease was present and noted to have caused significant mortality and decline in elm trees in both forest compartments. No abiotic disturbance was recorded. A total of 2 invasive plants were observed, buckthorn and purple loosestrife.

By Compartment:

Compartment 14142: FHR = 3
Dominant species: white elm
Comments: Dutch elm disease

Compartment 14143: FHR = 3
Dominant species: elm species
Comments: Dutch elm disease

Biotic and Abiotic Disturbances

- Dutch elm disease

Ash Status

Presence of ash decline and mortality due to emerald ash borer was recorded in each compartment.

Compartment	Decline	Mortality
14142		
14143		



*Blank cells indicate that decline or mortality is not present in the compartment

*FHR = Forest Health Rating

Invasive Plant Cover



Buckthorn



Purple loosestrife



Forest Health Report Card

Brook Valley Park Woodland ID 281 (Zone 8)

Forest Health Rating (FHR)

- 1 Healthy with no obvious forest health issues
- 2 Moderately healthy, minor issues and <30% mortality
- ✓ 3 Health affected by obvious issues and >30% mortality



Woodland Summary

Overall, the health of the woodland is affected by obvious issues in the dominant tree canopy. Significant ash decline and mortality due to emerald ash borer was observed in the woodland. No other biotic or abiotic disturbances were present. A total of 3 invasive plants were recorded, buckthorn, garlic mustard, and wild grape vine.

By Compartment:

Compartment 14123: FHR = 3
 Dominant species: willow
 Comments: decline due to emerald ash borer

Biotic and Abiotic Disturbances

- No disturbances present

Ash Status

Presence of ash decline and mortality due to emerald ash borer was recorded in each compartment.

Compartment	Decline	Mortality
14123	✓	✓



*Blank cells indicate that decline or mortality is not present in the compartment

Special Notes:

Forest health monitoring plots established in all compartments of the woodland.

*FHR = Forest Health Rating

Invasive Plant Cover



Buckthorn



Garlic mustard



Wild grape vine



Forest Health Report Card

Dunvegan Park

Woodland ID 69 (Zone 4)

Forest Health Rating (FHR)

- 1 Healthy with no obvious forest health issues
- 2 Moderately healthy, minor issues and <30% mortality
- ✓ 3 Health affected by obvious issues and >30% mortality



Woodland Summary

Overall, the health of the woodland is affected by obvious issues in the dominant tree canopy. Significant ash decline and mortality due to emerald ash borer was observed in both forest compartments of the woodland. No additional biotic or abiotic disturbances were present. A total of 3 invasive plants were recorded, each present in all forest compartments.

By Compartment:

Compartment 6205: FHR = 3
Dominant species: Scots pine

Compartment 6207: FHR = 3
Dominant species: white ash

Biotic and Abiotic Disturbances

- No disturbances present

Ash Status

Presence of ash decline and mortality due to emerald ash borer was recorded in each compartment.

Compartment	Decline	Mortality
6205	✓	✓
6207	✓	✓



*Blank cells indicate that decline or mortality is not present in the compartment

*FHR = Forest Health Rating

Invasive Plant Cover



Buckthorn



Garlic mustard



Wild grape vine



Forest Health Report Card

Exception Zone 961

Woodland ID 961 (Zone 5)

Forest Health Rating (FHR)

- 1 Healthy with no obvious forest health issues
- 2 Moderately healthy, minor issues and <30% mortality
- ✓ 3 Health affected by obvious issues and >30% mortality



Woodland Summary

Overall, the health of the woodland is affected by obvious issues in the dominant tree canopy. Significant ash decline and mortality due to emerald ash borer was observed in the woodland. Biotic disturbance of tar spot and anthracnose on Norway maple was present. No abiotic disturbances were recorded in the woodland. A total of 3 invasive plants were observed, buckthorn, garlic mustard, and wild grape vine.

By Compartment:

Compartment 8643: FHR = 3
 Dominant species: ash species
 Comments: tar spot on Norway maple; anthracnose on Norway maple

Biotic and Abiotic Disturbances

- Tar spot
- Anthracnose

Ash Status

Presence of ash decline and mortality due to emerald ash borer was recorded in each compartment.

Compartment	Decline	Mortality
8643	✓	✓



*Blank cells indicate that decline or mortality is not present in the compartment

*FHR = Forest Health Rating

Invasive Plant Cover



Buckthorn



Garlic mustard



Wild grape vine

