

APPENDIX 1 HERITAGE CONSERVATION DISTRICTS

- | | |
|--|--|
| <ul style="list-style-type: none"> Old Oakville Heritage Conservation District First and Second Street Heritage Conservation District | <ul style="list-style-type: none"> Trafalgar Road Heritage Conservation District Downtown Oakville Heritage Conservation District |
| Properties Excluded from District Designation | |

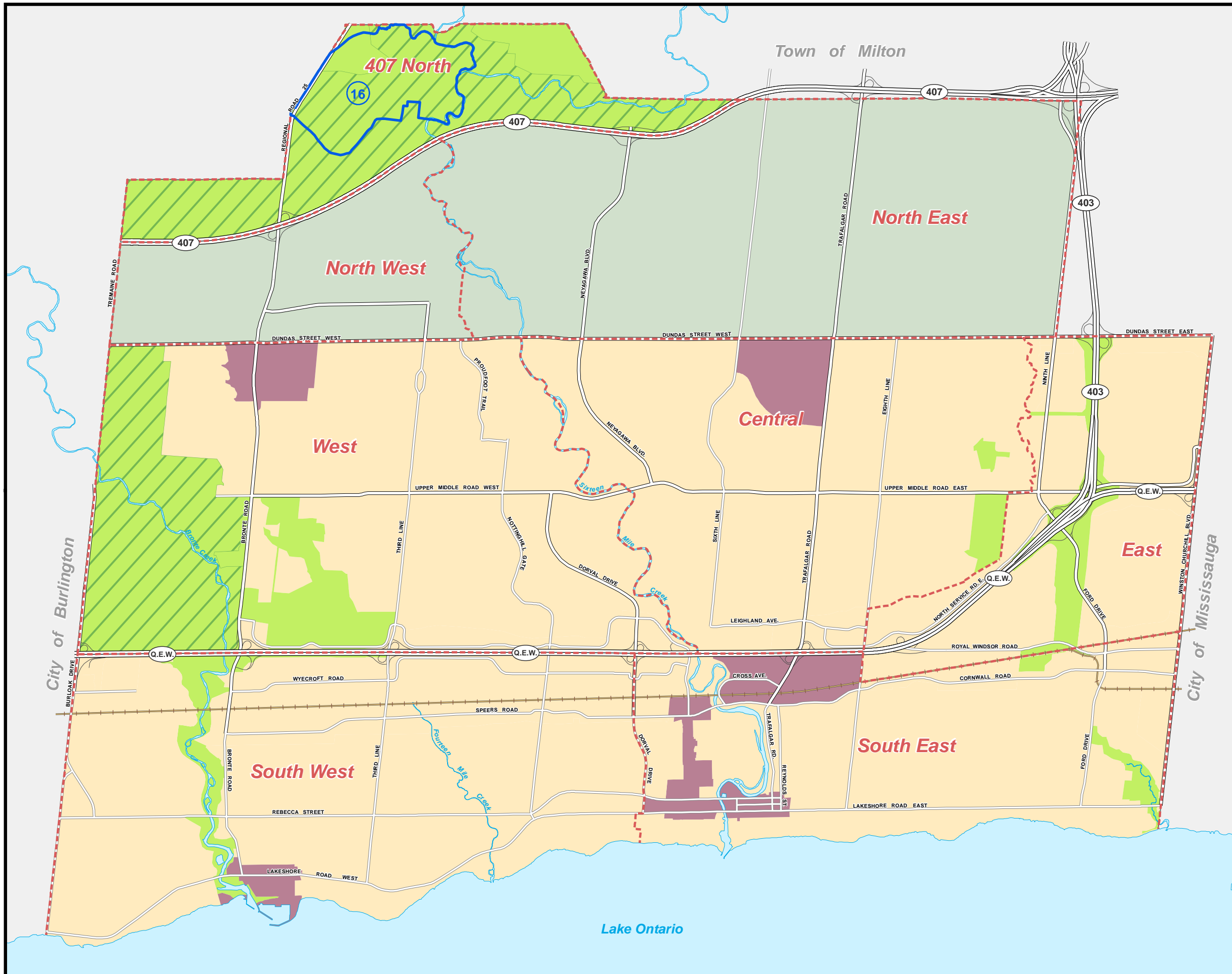







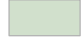

1: 6,500
August 31, 2021

APPENDIX 2 SITE-SPECIFIC APPEAL OF LIVABLE OAKVILLE

The lands indicated are not subject to the policies and schedules of the Livable Oakville Plan pending adjudication of the following site-specific appeal (Ontario Land Tribunal Case No. PL100058):

- Trafalgar Moraine ANSI,
Appellant # 16: Melrose Investments Inc. et al



-  SITE-SPECIFIC APPEAL (OLT Case No. PL100058)
-  SCHEDULE AREA BOUNDARY
-  GROWTH AREAS
-  PARKWAY BELT
-  GREENBELT
-  LANDS NOT SUBJECT TO THE POLICIES OF THIS PLAN
-  RAILWAY LINE



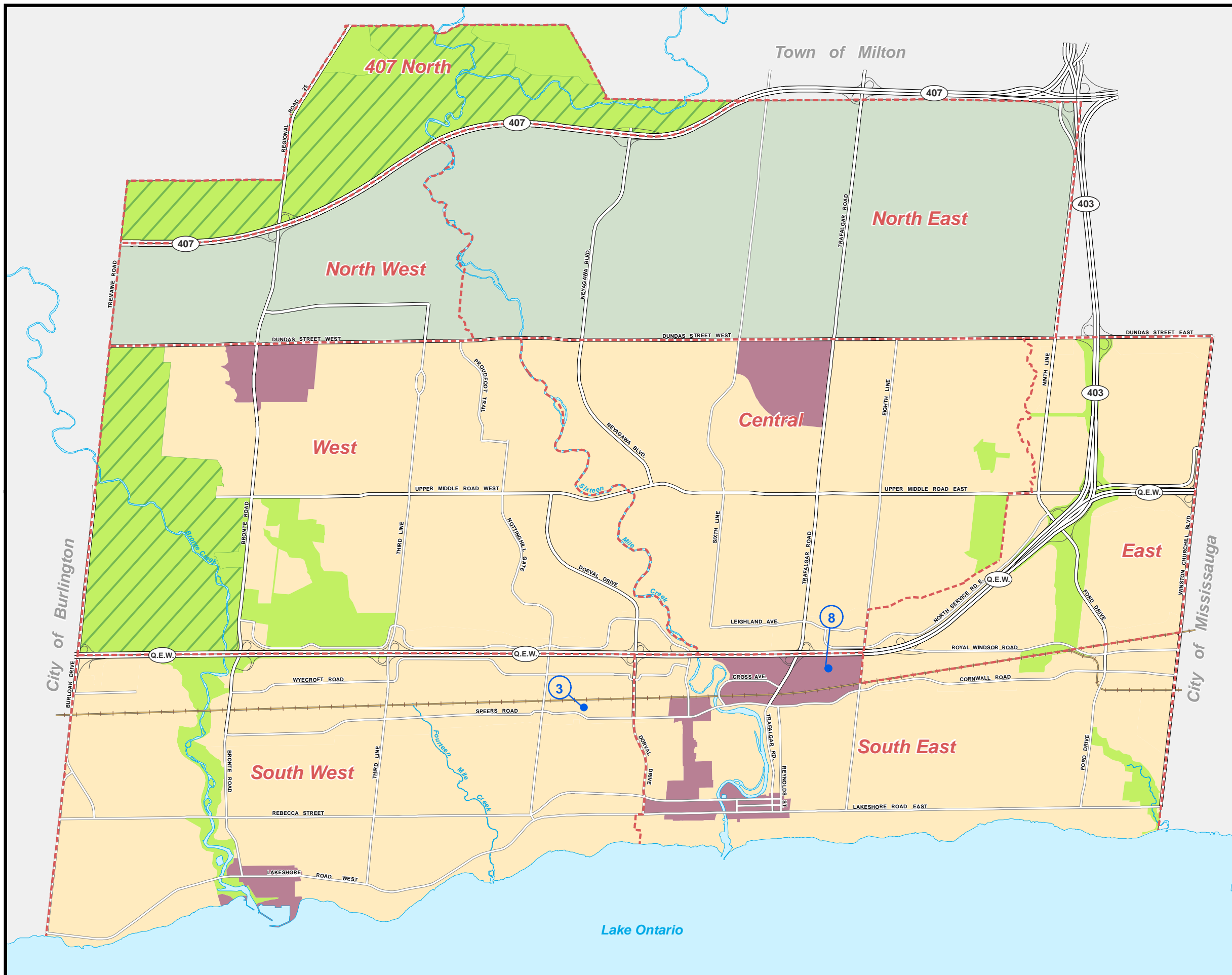
1:50,000
August 31, 2021

S:\DEPARTMENT\PLANNING\GIS DATA DEVELOPMENT\OFFICIAL PLAN\OP2008\ LIVABLE OAKVILLE MXD...APPENDIX_2.mxd

APPENDIX 3 SITE-SPECIFIC APPEALS OF OPA 4

The lands indicated are not subject to OPA 4 pending adjudication of the following site-specific appeals (Ontario Land Tribunal Case No. PL140317):

- 467, 483 and 487 Speers Road, Appellant # 3: Belven Investments Ltd.
- 420 and 468 South Service Rd. E. Appellant # 8: General Electric



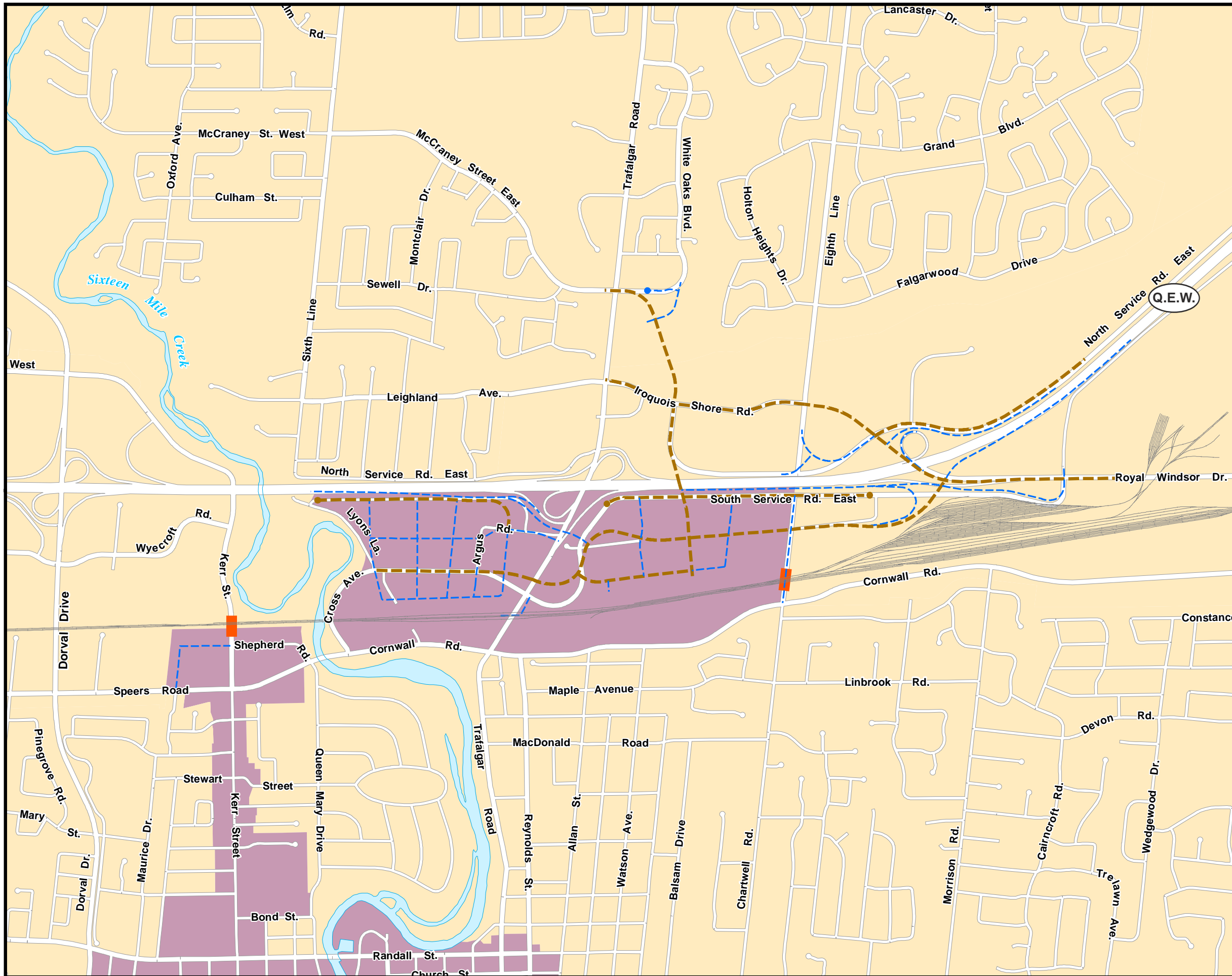
- SITE-SPECIFIC APPEALS (OLT Case No. PL140317)
- SCHEDULE AREA BOUNDARY
- GROWTH AREAS
- PARKWAY BELT
- GREENBELT
- LANDS NOT SUBJECT TO THE POLICIES OF THIS PLAN
- RAILWAY LINE



1:50,000

August 31, 2021

APPENDIX 4 MIDTOWN OAKVILLE AND AREA TRANSPORTATION NETWORK



- Growth Areas
- Existing Road Network
- Future EA Roads
- Future Local Roads
- Future Railway Grade Separation
- Railway
- Major Transit Station



1:15,500

August 31, 2021

S:\DEPARTMENT\PLANNING\GIS DATA DEVELOPMENT\OFFICIAL PLAN\OP2008\LIVABLE OAKVILLE MXD...APPENDIX_4.mxd