

Bronte Beach Redevelopment Bronte Harbour Public Open House

As part of the 2024 capital budget the Parks and Open Space department received funding for implementing Phase 2 – Redevelopment of Bronte Beach Park. In 2019, Phase 1 improvements were completed that included a new relocated launch ramp, expanded parking and low maintenance plantings.

The Parks and Open Space department is moving forward with plans for Phase 2 that includes improved trail connectivity, junior and senior children’s play structures, shade shelter, seating, lighting, and updated landscaping.

In addition, Bronte Beach has seen some erosion occurring over the past few years with severe storms and high lake levels causing some sections of the beach to become unusable. Phase 2 works will also restore the eroding beach to ensure that Bronte Beach Park continues to be one of Oakville’s premier waterfront parks for residents.

Thank you for attending!

Please review our plans and learn more about the proposed upcoming improvements. Town staff and representatives from the MBTW Group and Shoreplan Engineering are present to answer your questions.

Project Contact:

Rakesh Mistry, OALA, CSLA
Waterfront Development Coordinator
Tel: (905) 845-6601 ext. 3664
Email: rakesh.mistry@oakville.ca





Legend

- A** BOAT LAUNCH
- B** TRAILER PARKING
- C** PARKING
- D** CROSSWALK
- E** GRANULAR PATHS
- F** INFILTRATION AREAS
- G** OPEN PARK SPACE
- H** BEACH AREA
- I** FIRST NATIONS TREATY LANDS SIGN
- J** PAY PHONE (To be removed)
- K** COBBLE SHOAL
- L** ERODING SHORELINE
- M** BIKE PARKING



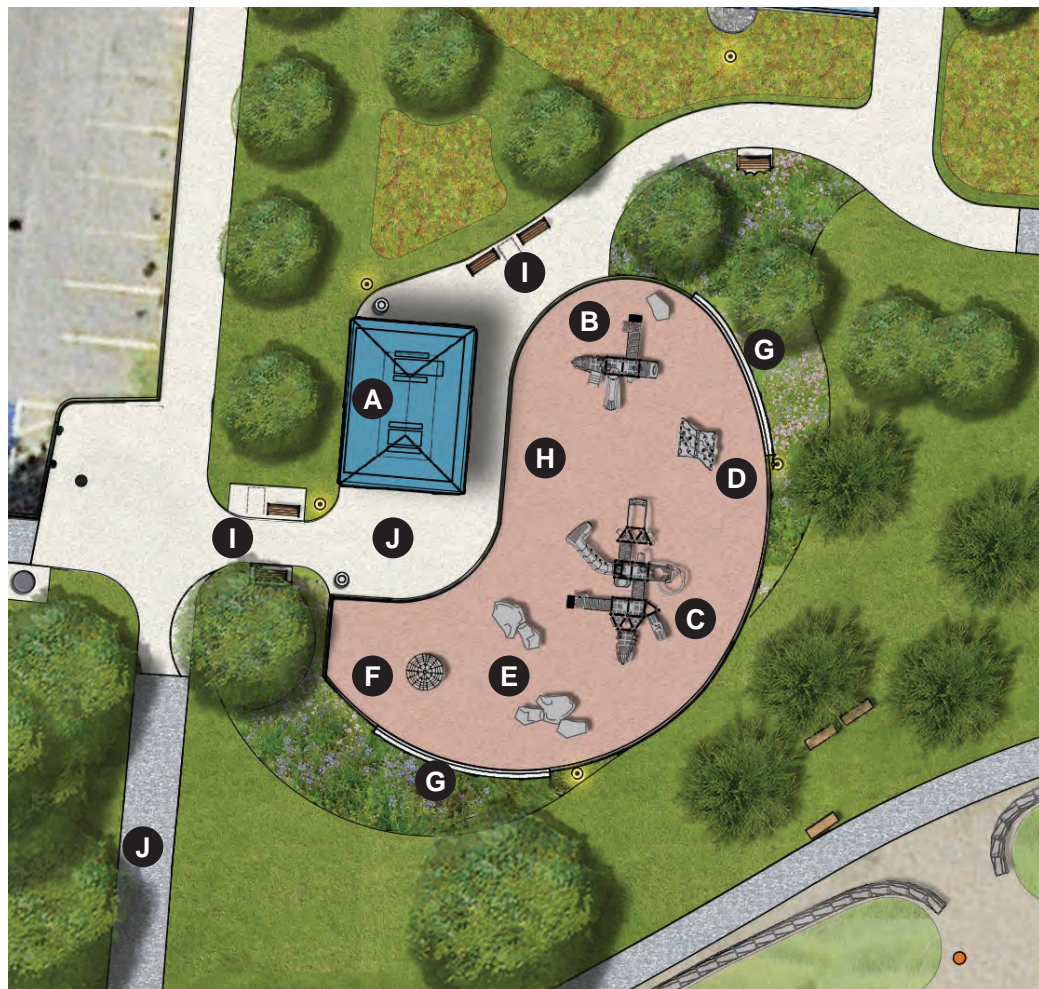
Drawing Not to Scale



Legend

- A** SHELTER
- B** JUNIOR AND SENIOR PLAYGROUND
- C** RELOCATED BIKE PARKING
- D** LITTER/RECYCLING BINS
- E** FIRST NATIONS TREATY LANDS SIGN
- F** NEW BENCHES
- G** NATIVE SPECIES PLANTING
- H** NATURALIZATION AREA
- I** INFILTRATION AREAS
- J** ARMOURSTONE SEATWALL
- K** FOOT WASH STATION
- L** CONCRETE PAVING
- M** ASPHALT PAVING
- N** ACCESSIBLE SAND MATS
- O** SHORELINE REPAIR AREAS
- P** BEACH AREA
- Q** EXISTING BENCHES (Note: To be replaced with new benches. Memorial plaques to be transferred.)
- R** SEASONAL VENDOR AREA

Drawing Not to Scale



Play Area Plan View

Drawing Not to Scale

- A** PROPOSED SHELTER
- B** JUNIOR PLAY STRUCTURE
- C** SENIOR PLAY STRUCTURE
- D** ROCK TUNNEL
- E** CLIMBING BOULDERS
- F** CONE SPINNER
- G** SEATWALL
- H** PLAY SURFACING (Engineered Wood Fibre)
- I** NEW BENCHES
- J** CONCRETE PAVING
- K** ASPHALT PAVING





Asphalt Paving



Concrete Paving



Accessible Sand Mats



Pole Lights



New Benches



Armourstone Seatwall



Beach Naturalization Area



Foot Wash Station



Litter and Recycling Bins



Native Species Planting Area



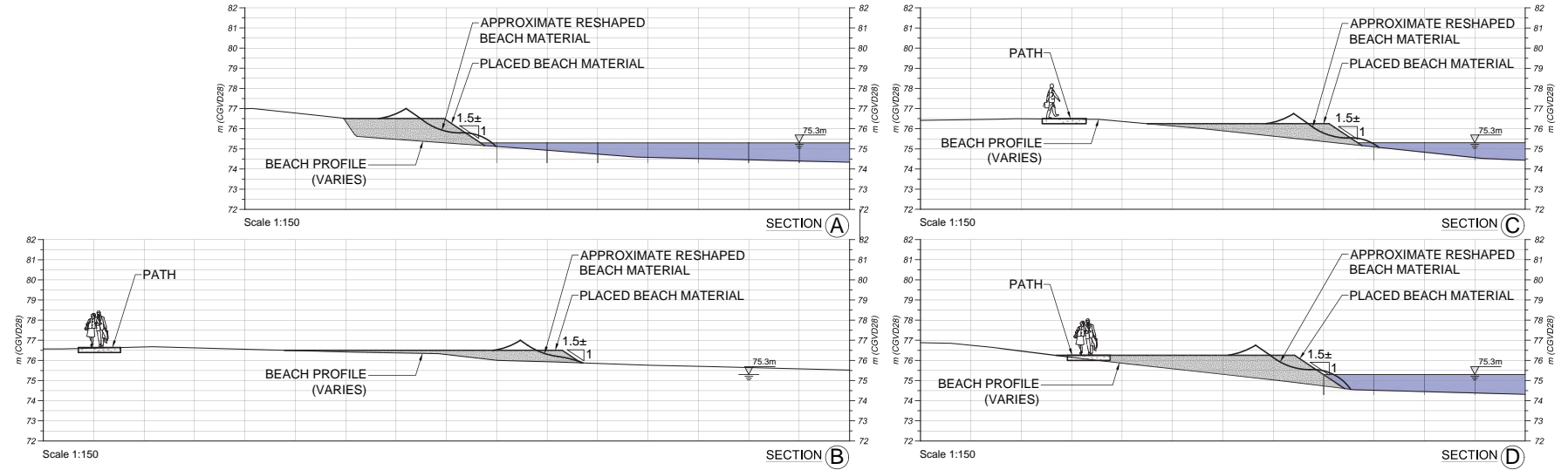
Picnic Tables



Picnic Tables



Scale 1:300



Project Timeline & Next Steps

Existing Site Photos

May 2018 - First Preliminary Concept Developed

February 2024 - Project Updated

April 10 2024 - Public Consultation

April-May 2024 - Detailed Design Stage

May 20, 2024 - Agency Review

Late June 2024 - Issue for Tender

September-December 2024 - Construction

Thank you for attending!

Project Contact:

Rakesh Mistry, OALA, CSLA
Waterfront Development Coordinator
Tel: (905) 845-6601 ext. 3664
Email: rakesh.mistry@oakville.ca

