

Online Public Information Centre

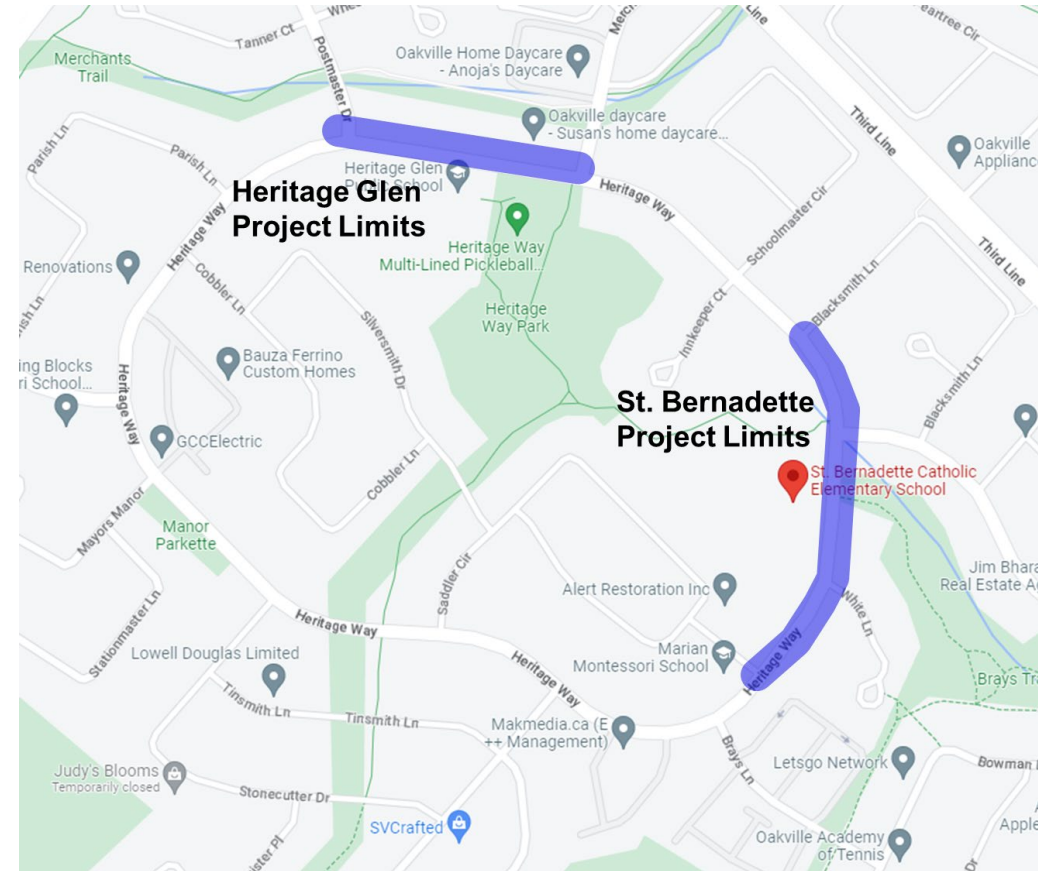
Traffic Calming in School Zones on Major
Collector and Minor Arterial Roadways

April 2023



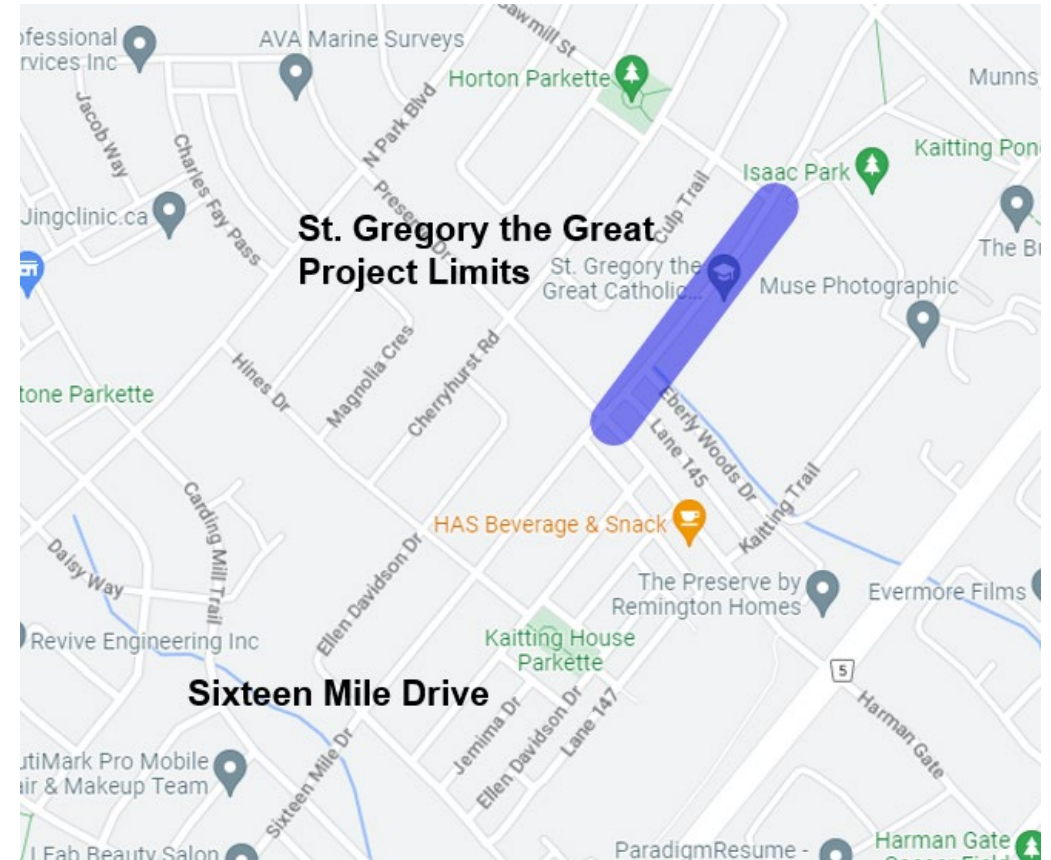
Project Overview & Limits

- The project includes the design and implementation of traffic calming infrastructure at three school sites
- Two schools are located along Heritage Way:
 - Heritage Glen Public School, between Blacksmith Lane to Goldsmith Gate
 - St. Bernadette Catholic Elementary School between Postmaster Drive and Merchants Gate



Project Overview & Limits

- One school is located along Sixteen Mile Drive:
 - St. Gregory the Great Catholic Elementary School with project limits from Preserve Drive to Colton Way



Overview of Traffic Calming

Traffic calming is a term used to describe a combination of mostly **physical features that are intended to reduce speeding** on neighbourhood roads and **improve safety conditions** for everyone who uses the road.

The traffic calming treatment available for a road depends on the classification and context of the road:

- For local or minor collector roadways, both **vertical measures** that require vehicles to traverse features (such as speed cushions and raised crosswalks) as well as **horizontal measures** that require vehicle deflection (such as raised medians and curb extensions) can be considered
- For major collectors and arterial roadways, only **horizontal measures** are typically considered



Curb Extension

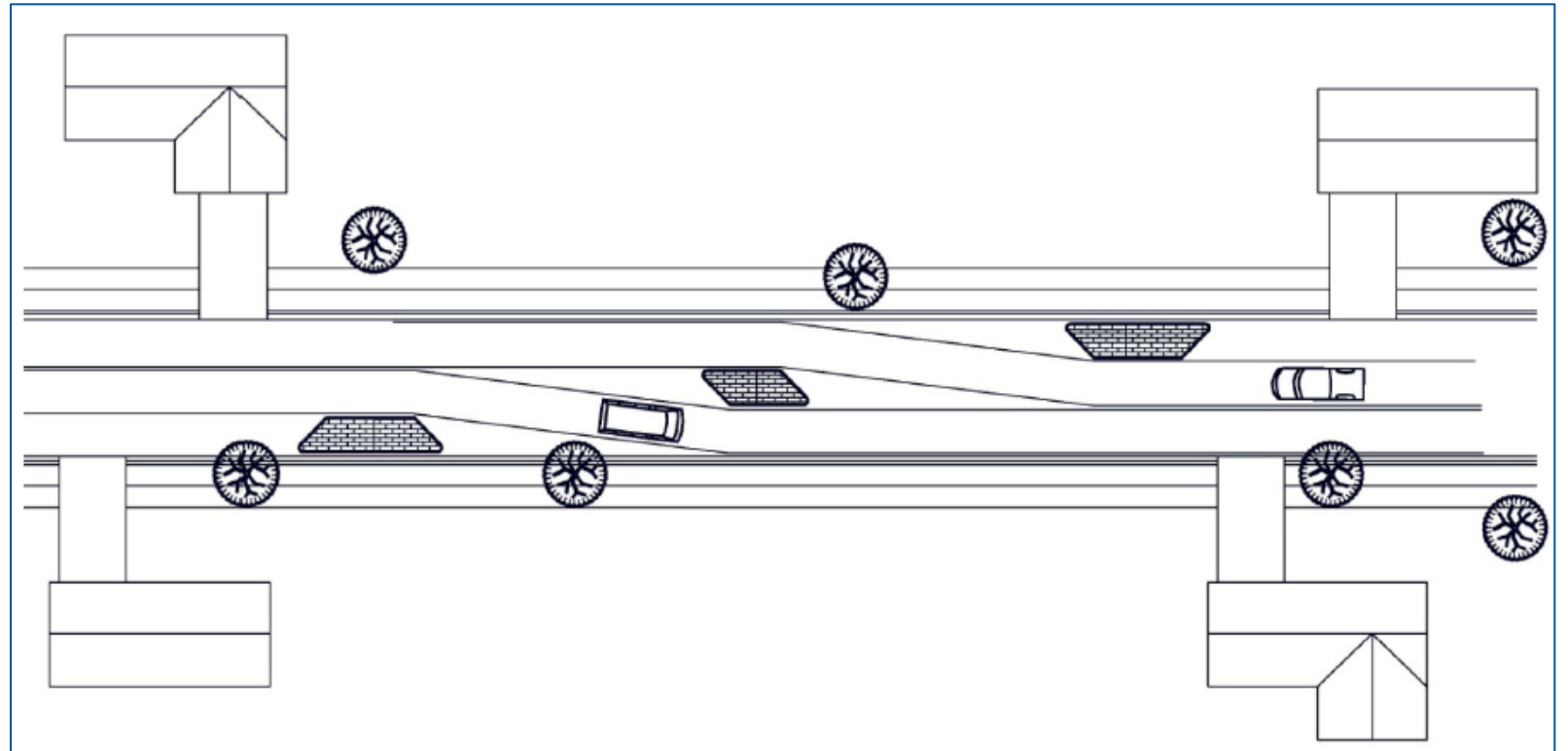


Raised Median

Overview of Traffic Calming | Lateral Shifts

Lateral Shift

Realignment of a straight roadway through the combined use of medians, curb extensions, or chicanes to increase driver alertness (through increased driving complexity) and reduce vehicle speed when negotiating the clear path (horizontal traffic calming)



Source: Delaware DOT Traffic Calming Manual

Policy Context



Transportation Master Plan

One of the key planning goals from the town's Transportation Master Plan, *Switching Gears* (2018), is to provide a safe and efficient transportation system for all road users.



Active Transportation Master Plan

The town's Active Transportation Master Plan (2017) emphasizes the need to accommodate pedestrians and cyclists on every street, which includes supporting active school travel.



Vision Zero

The town also recognizes the Vision Zero philosophy for eliminating traffic fatalities and severe injuries among all road users by providing safe, healthy, and equitable mobility for all. Speeds are a key contributor to collision risk.

Project Background | Neighbourhood Traffic Safety Program

- The town's Neighbourhood Traffic Safety Program has six key components:
 - Traffic calming
 - Pedestrian crossovers
 - Community safety zones
 - Automated speed enforcement
 - Reduced default speed limit
 - Vision Zero

Project Background | Traffic Calming in School Zones on Major Collector and Minor Arterial Roadways

- In 2018, the town initiated a study of traffic calming measures that could be implemented along major collector and minor arterial roadways in school zones
- Many traffic calming measures have limited applications along major collector and minor arterial roadways, and emerging traffic calming measures require consideration in these contexts
- Through that study, new traffic calming measures were added to the town's toolbox and functional designs were developed across twenty school sites
- Three school sites have been identified for follow-up and implementation of traffic calming measures at this time
- Traffic calming at additional schools will be reviewed

Heritage Glen Public School

Heritage Way, Postmaster Drive to Merchants Gate

Heritage Glen Public School: Proposed Traffic Calming Features



Existing Median to be Widened

School Driveway (Entrance)

School Driveway

New Lateral Shift

School Driveway

To Merchants Gate

Heritage Way

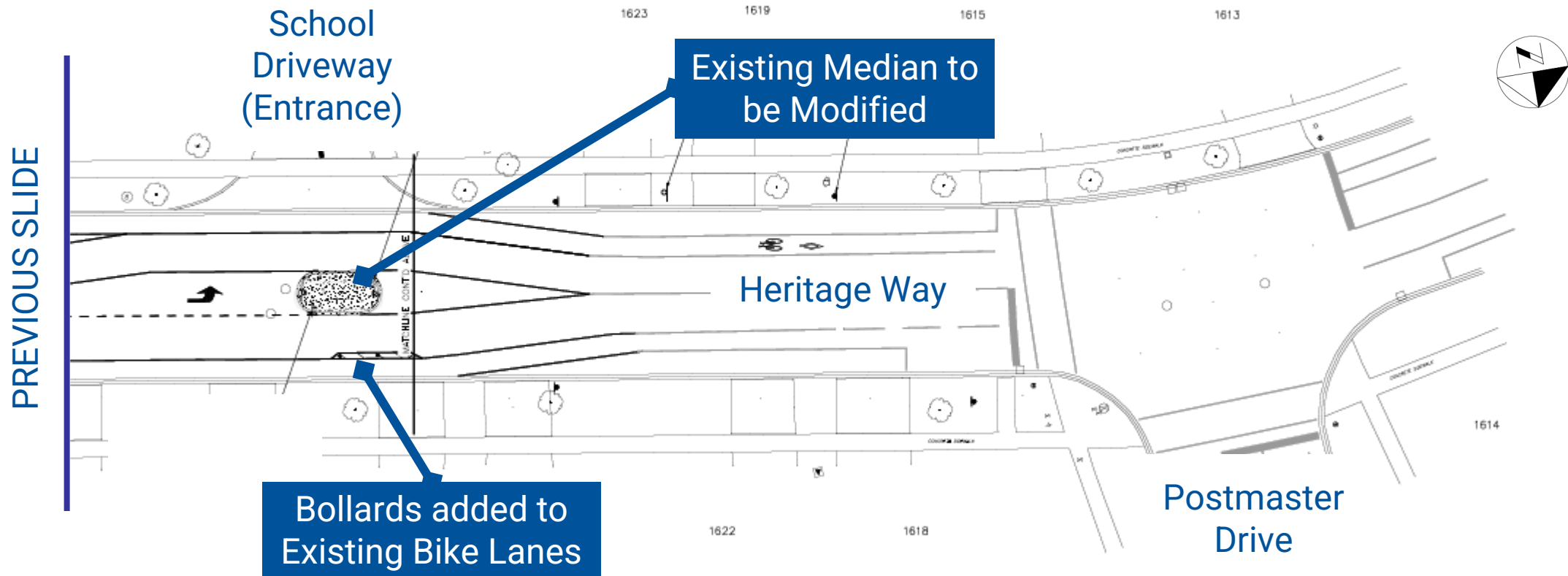
NEXT SLIDE

Bollards added to Existing Bike Lanes



Source: Develotech

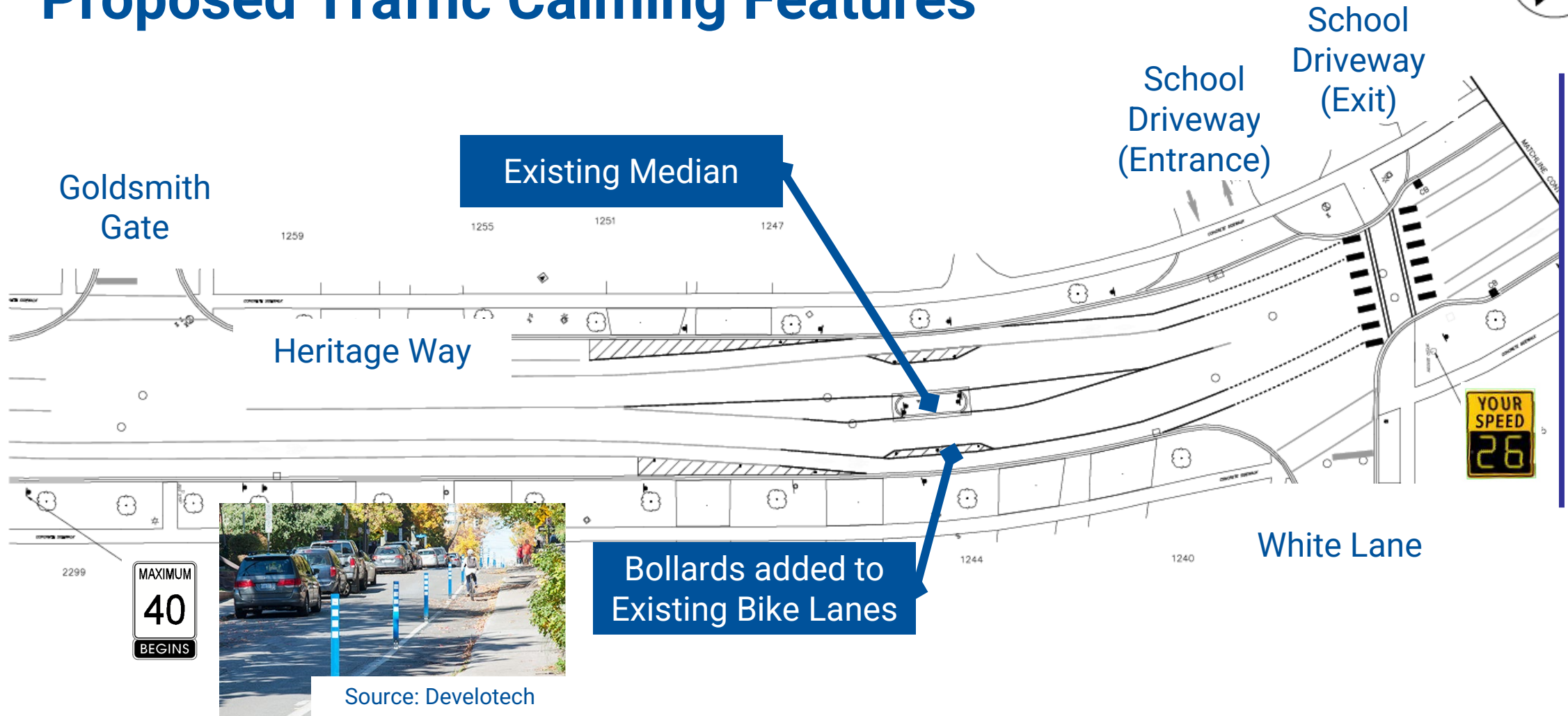
Heritage Glen Public School: Proposed Traffic Calming Features



St. Bernadette Catholic Elementary School

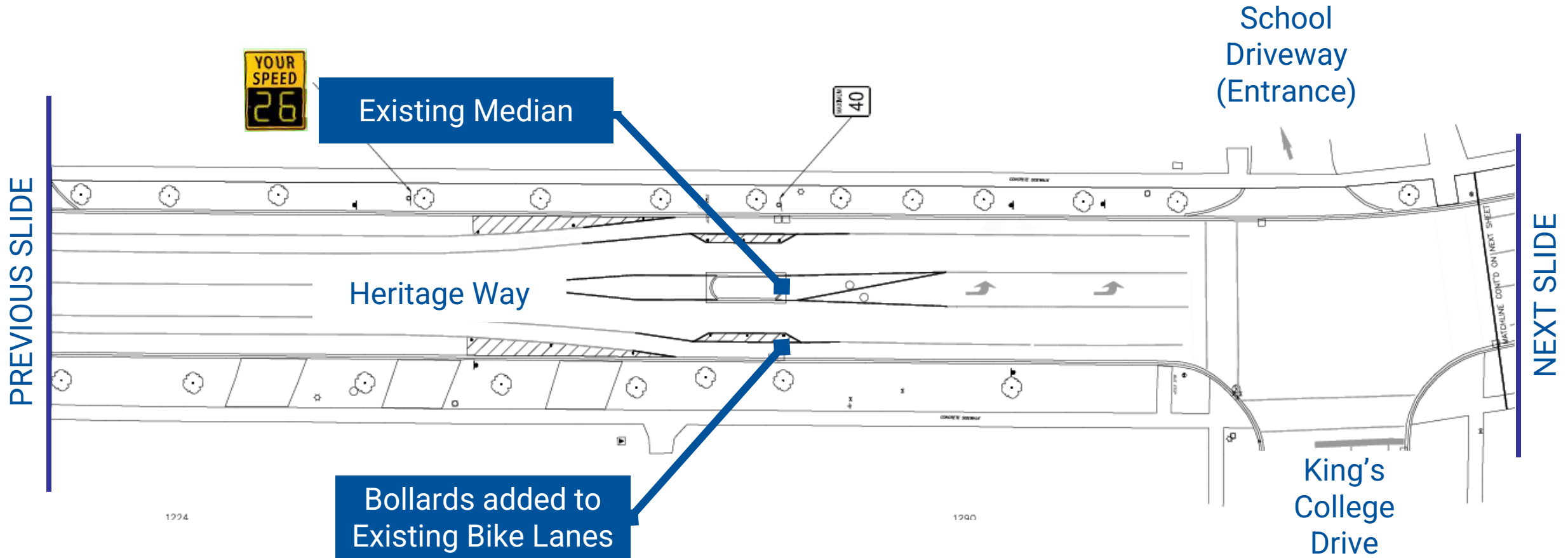
Heritage Way, Goldsmith Gate to Blacksmith Lane

St. Bernadette Catholic Elementary School: Proposed Traffic Calming Features



Source: Develotech

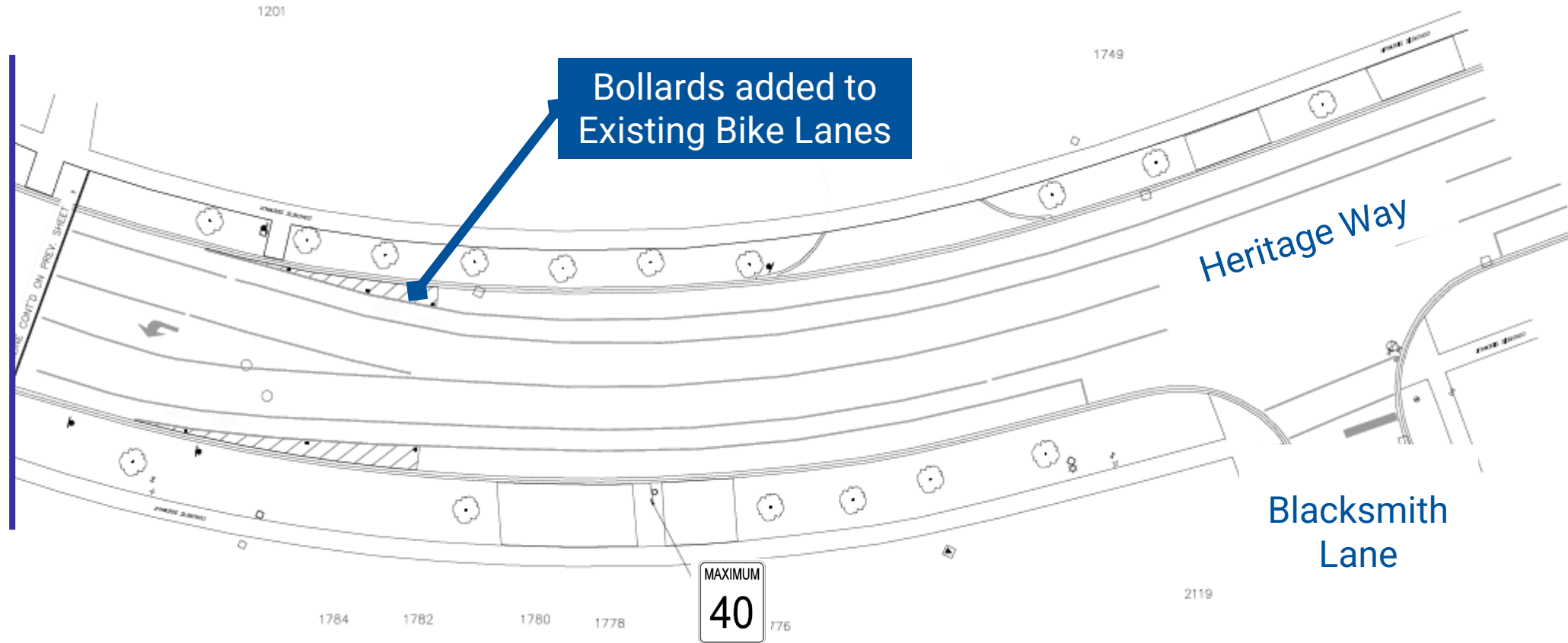
St. Bernadette Catholic Elementary School: Proposed Traffic Calming Features



St. Bernadette Catholic Elementary School: Proposed Traffic Calming Features

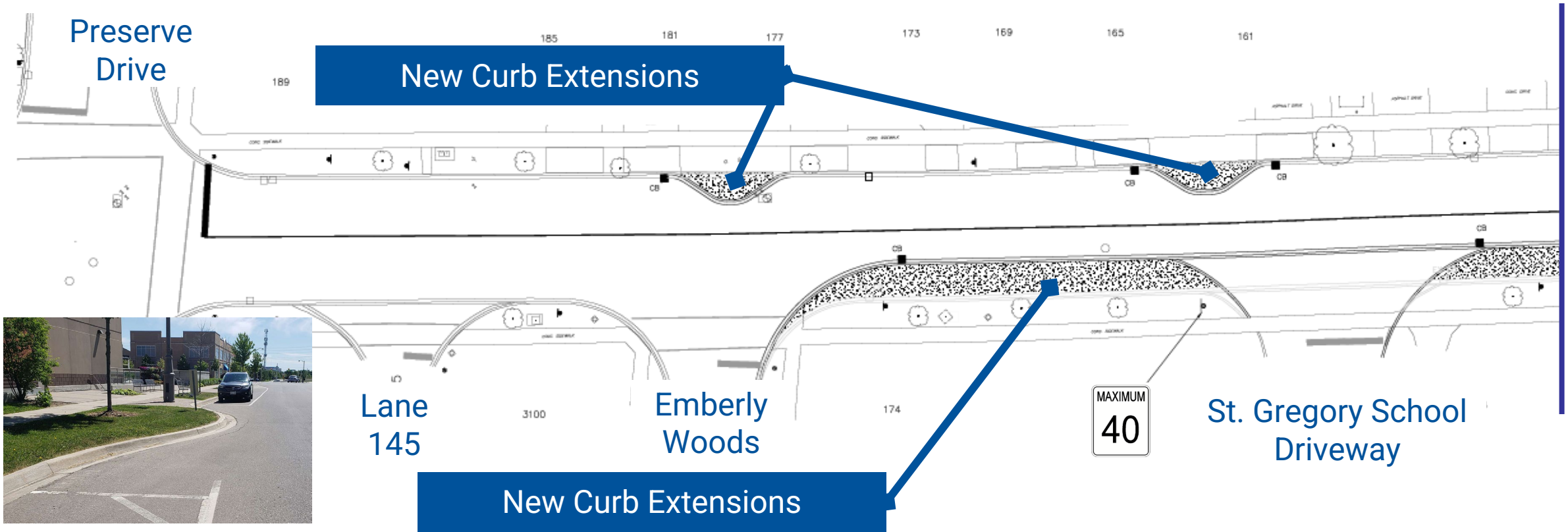


PREVIOUS SLIDE



St. Gregory the Great
Catholic Elementary School
Sixteen Mile Drive, Preserve Drive to Colton Way

St. Gregory the Great Catholic Elementary School: Proposed Traffic Calming Features

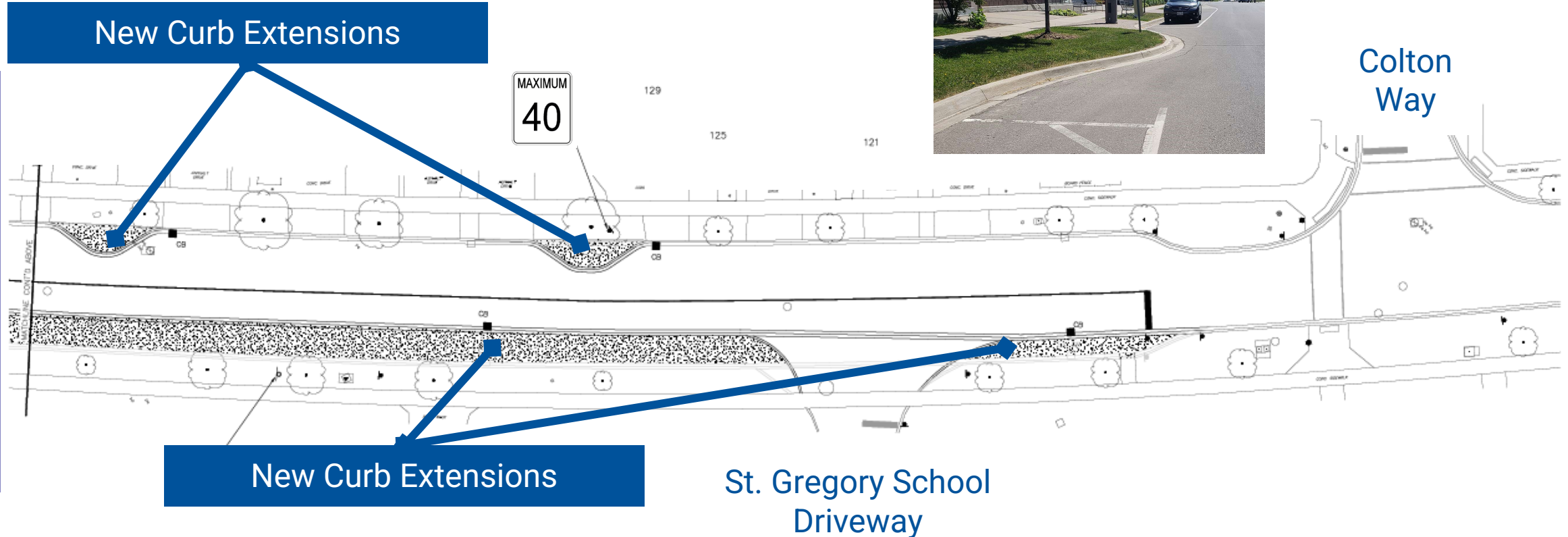


NEXT SLIDE

St. Gregory the Great Catholic Elementary School: Proposed Traffic Calming Features



PREVIOUS SLIDE



Next Steps



Provide your input:

- Please review the proposed designs in your area and provide input using the online feedback form
- Residents and stakeholders are encouraged to share comments by April 26 2023



After this PIC, we will:

- Review comments and suggestions from residents, stakeholders, and agencies
- Prepare a summary of “What We Heard”
- Initiate final design drawings
- Final designs will be posted on the town's website



Stay Connected:

Construction is anticipated to begin in early summer 2023. We will provide updates on the project as it progresses through the town’s website: [oakville.ca](https://www.oakville.ca)

Additional questions can be emailed directly to the project manager: Jonathan.Tshisekedi@oakville.ca