

## APPENDIX 1 HERITAGE CONSERVATION DISTRICTS

- |  |  |
|--|--|
| <ul style="list-style-type: none"> <li><span style="display: inline-block; width: 20px; height: 2px; background-color: green; margin-right: 5px;"></span> Old Oakville Heritage Conservation District</li> <li><span style="display: inline-block; width: 20px; height: 2px; background-color: blue; margin-right: 5px;"></span> First and Second Street Heritage Conservation District</li> </ul> | <ul style="list-style-type: none"> <li><span style="display: inline-block; width: 20px; height: 2px; background-color: red; margin-right: 5px;"></span> Trafalgar Road Heritage Conservation District</li> <li><span style="display: inline-block; width: 20px; height: 2px; background-color: purple; margin-right: 5px;"></span> Downtown Oakville Heritage Conservation District</li> </ul> |
| <span style="display: inline-block; width: 20px; height: 15px; background-color: orange; margin-right: 5px;"></span> Properties Excluded from District Designation   |  |



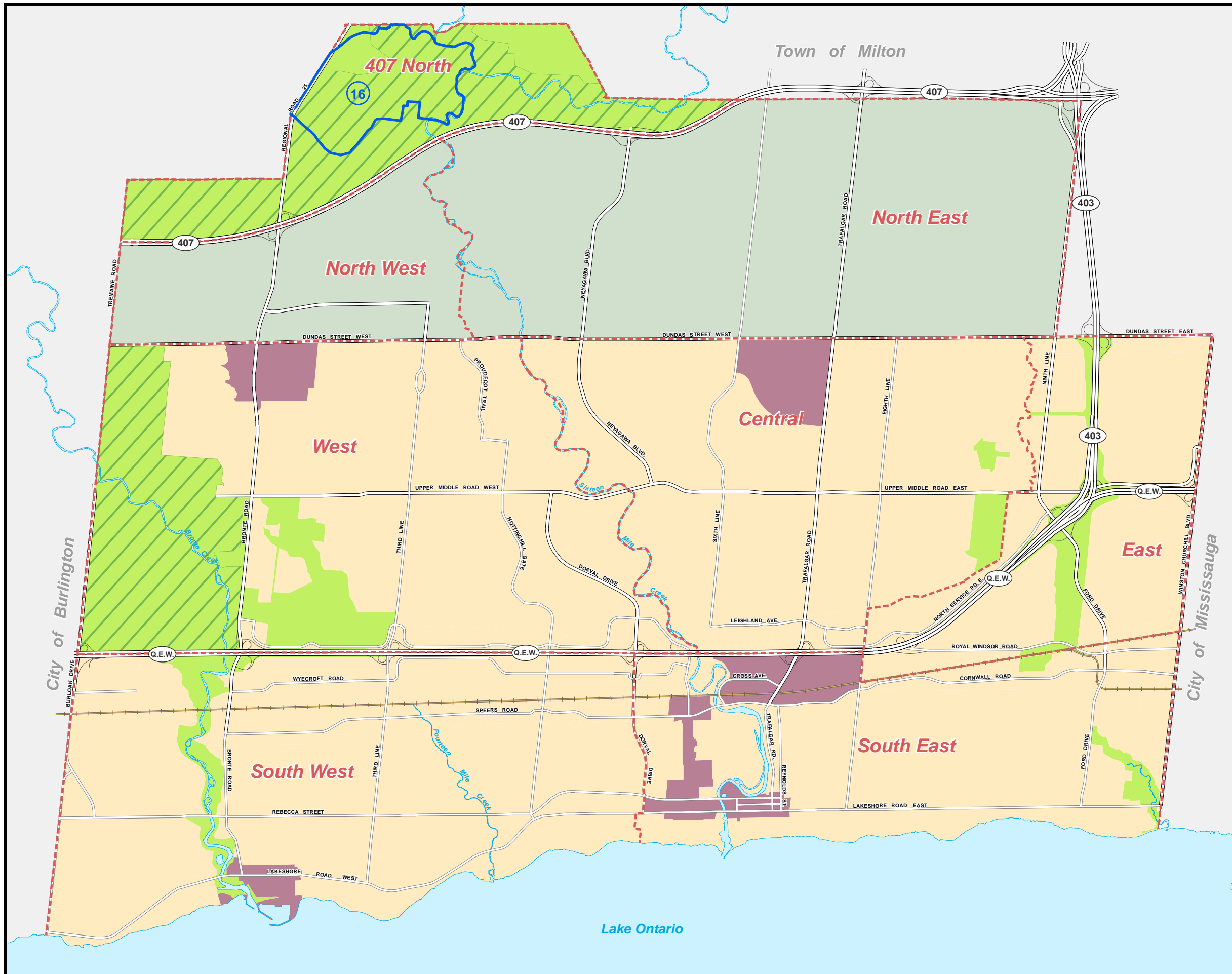
1: 6,500

August 28, 2018

# APPENDIX 2 SITE-SPECIFIC APPEALS: LIVABLE OAKVILLE

The following lands are not subject to the policies and schedules of the Livable Oakville Plan pending adjudication of site-specific appeals to the Ontario Municipal Board (OMB Case No. PL100058):

- 16. Trafalgar Moraine ANSI, Melrose Investments Inc. et al



- SITE-SPECIFIC APPEALS (OMB Case No. PL100058)
- SCHEDULE AREA BOUNDARY
- GROWTH AREAS
- PARKWAY BELT
- GREENBELT
- LANDS NOT SUBJECT TO THE POLICIES OF THIS PLAN
- RAILWAY LINE



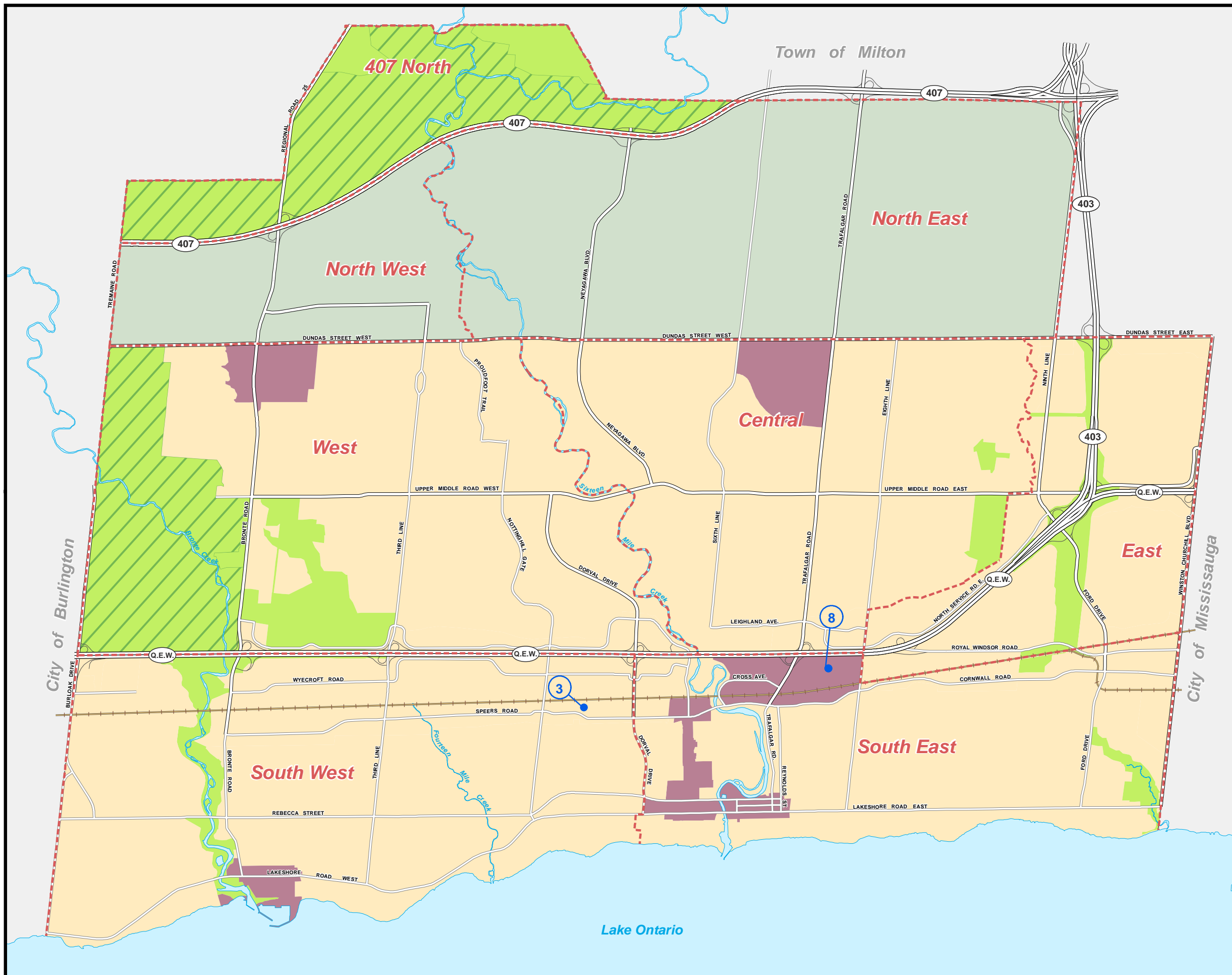
1:50,000

August 28, 2018

# APPENDIX 3 SITE-SPECIFIC APPEALS: OPA 4

The following lands are not subject to OPA 4 pending adjudication of site-specific appeals to the Ontario Municipal Board (OMB Case No.PL140317):

- 3. Bellven Investments Limited  
467, 483, 487 Speers Rd.
- 8. General Electric Canada  
420-468 South Service Rd. E.



- SITE-SPECIFIC APPEALS (OMB Case No. PL140317)
- SCHEDULE AREA BOUNDARY
- GROWTH AREAS
- PARKWAY BELT
- GREENBELT
- LANDS NOT SUBJECT TO THE POLICIES OF THIS PLAN
- RAILWAY LINE

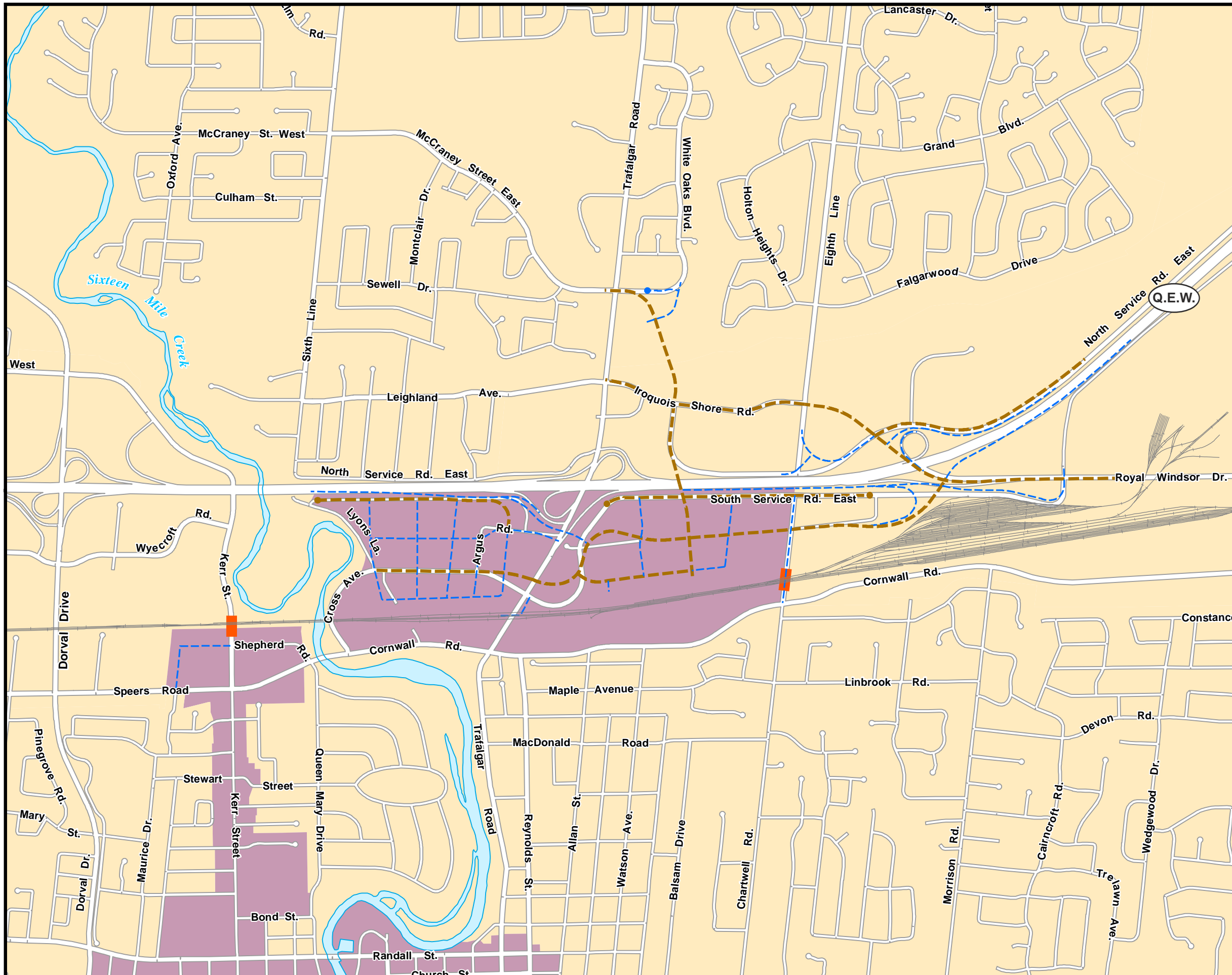


1:50,000

August 28, 2018



# APPENDIX 4 MIDTOWN OAKVILLE AND AREA TRANSPORTATION NETWORK



- Growth Areas
- Existing Road Network
- Future EA Roads
- Future Local Roads
- Future Railway Grade Separation
- Railway
- Major Transit Station



1:15,500

August 28, 2018

S:\DEPARTMENT\PLANNING\GIS DATA DEVELOPMENT\OFFICIAL PLAN\OP2008\LIVABLE OAKVILLE MXD...APPENDIX\_4.mxd