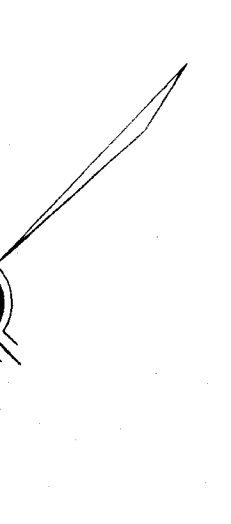
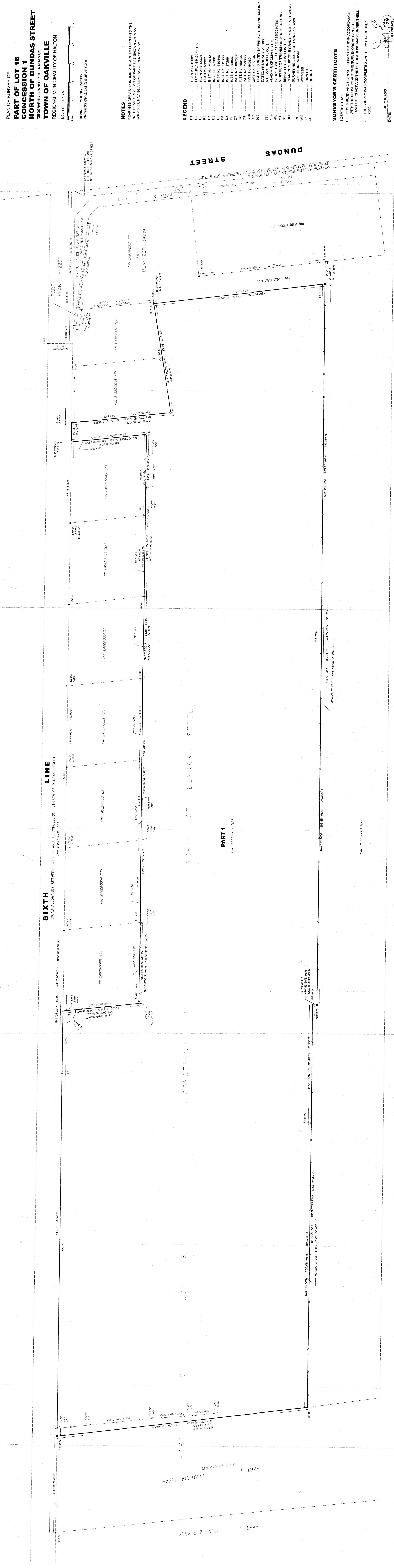


METRIC
 DIMENSIONS SHOWN ON THIS PLAN ARE IN METRES AND
 CONVERSIONS TO FEET BY DIVIDING BY 0.3048



NORTH OF DUNDAS STREET
 CONCESSION
 LOT 15
 CONCESSION
 NORTH OF DUNDAS STREET
 PART 1
 PLAN 20R-13449
 PART 1
 PLAN 20R-8568



PLAN OF SURVEY OF
PART OF LOT 16
CONCESSION 1
NORTH OF DUNDAS STREET
 (GEOGRAPHIC TOWNSHIP OF TRAFALGAR)
 TOWN OF OAKVILLE
 REGIONAL MUNICIPALITY OF HALTON

SCALE 1 : 750
 15m 30m 45m 60m
 BENNETT YOUNG LIMITED
 PROFESSIONAL LAND SURVEYORS

NOTES
 BEARINGS ARE ASTROMERIC AND ARE REFERRED TO THE
 NORTHERLY LIMIT OF PART 1 AS SHOWN ON PLAN
 20R-10889, HAVING A BEARING OF N07°12'30"W

LEGEND

P1	PLAN 20R 15689
P2	M.T.O. PLAN P-2074-116
P3	PLAN 20R-3449
P4	PLAN 20R-3449
D1	INST No. 708843
D2	INST No. 70280
D3	INST No. 711880
D4	INST No. 711880
D5	INST No. 272861
D6	INST No. 286867
D7	INST No. 798136
D8	INST No. 798136
D9	INST No. 798136
D10	INST No. 21034
D11	INST No. 21034
950	PLAN OF SURVEY BY FRED G. CUNNINGHAM INC DATED FEBRUARY 28, 1988
760	V. JAMER KIRKMAN O.L.S.
1370	MAROLD WHEELER AND ASSOCIATES REGISTERED PROFESSIONAL ENGINEERS REGISTERED PROFESSIONAL SURVEYORS REGISTERED PROFESSIONAL GEODETIC ENGINEERS REGISTERED PROFESSIONAL PHOTOGRAMMETRIC ENGINEERS
HW	PLAN OF SURVEY BY FRED G. CUNNINGHAM INC DATED FEBRUARY 28, 1988
RPE	PLAN OF SURVEY BY FRED G. CUNNINGHAM INC DATED FEBRUARY 28, 1988
OU	WITNESS UNKNOWN
WIT	WITNESS UNKNOWN
IP	IRON PIPE
Ø	ROUND

SURVEYOR'S CERTIFICATE
 I CERTIFY THAT:
 1. THE SURVEY AND PLAN ARE CORRECT AND IN ACCORDANCE
 WITH THE SURVEY ACT AND THE REGULATIONS MADE UNDER THEM.
 2. THE SURVEY WAS COMPLETED ON THE 7th DAY OF JULY
 2005.

DATE: JULY 8, 2005
 FRED G. CUNNINGHAM
 FRED G. CUNNINGHAM INC
 PROFESSIONAL LAND SURVEYORS

BENNETT YOUNG LIMITED
 PROFESSIONAL LAND SURVEYORS
 1540 MARTIN GROVE ROAD, UNIT 25, TORONTO, ONTARIO, M9W 4M7
 TEL: (416) 291-1001 FAX: (416) 291-0000

DATE: JULY 8, 2005
 PLAN 20R-13449
 PLAN 20R-8568