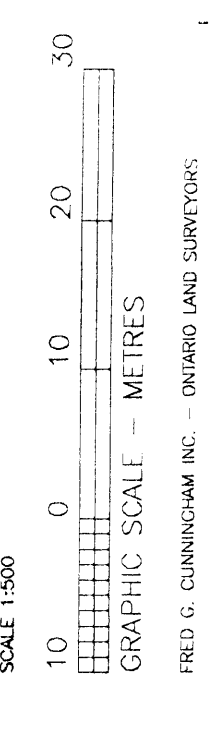


PLAN 20R-14568
 RECORDED AND DEPOSITED
 DATE: APRIL 5, 2002
 BY: Robert G. Cunningham
 COUNTY LAND SURVEYOR
 TOWN OF OAKVILLE

PLAN OF SURVEY OF
 PARK LOTS T, U, V
 AND PART OF
 LAWSON STREET
 (CLOSED BY BY-LAW 1986-60)
 REGISTERED PLAN 1
 TOWN OF OAKVILLE
 REGIONAL MUNICIPALITY OF HALTON



- METRIC NOTE: THIS PLAN IS IN ACCORDANCE WITH THE METRIC ACT AND THE METRIC REGULATIONS, 1995. ALL DIMENSIONS ARE IN METRES UNLESS OTHERWISE SPECIFIED.
- LEGEND:
- SUBJECT TO EASEMENT
 - SUBJECT TO EASEMENT (BY-LAW 1986-60)
 - SUBJECT TO EASEMENT (BY-LAW 1986-60) (SEE DETAIL "A")
 - SUBJECT TO EASEMENT (BY-LAW 1986-60) (SEE DETAIL "B")
 - SUBJECT TO EASEMENT (BY-LAW 1986-60) (SEE DETAIL "C")
 - SUBJECT TO EASEMENT (BY-LAW 1986-60) (SEE DETAIL "D")
 - SUBJECT TO EASEMENT (BY-LAW 1986-60) (SEE DETAIL "E")
 - SUBJECT TO EASEMENT (BY-LAW 1986-60) (SEE DETAIL "F")
 - SUBJECT TO EASEMENT (BY-LAW 1986-60) (SEE DETAIL "G")
 - SUBJECT TO EASEMENT (BY-LAW 1986-60) (SEE DETAIL "H")
 - SUBJECT TO EASEMENT (BY-LAW 1986-60) (SEE DETAIL "I")
 - SUBJECT TO EASEMENT (BY-LAW 1986-60) (SEE DETAIL "J")
 - SUBJECT TO EASEMENT (BY-LAW 1986-60) (SEE DETAIL "K")
 - SUBJECT TO EASEMENT (BY-LAW 1986-60) (SEE DETAIL "L")
 - SUBJECT TO EASEMENT (BY-LAW 1986-60) (SEE DETAIL "M")
 - SUBJECT TO EASEMENT (BY-LAW 1986-60) (SEE DETAIL "N")
 - SUBJECT TO EASEMENT (BY-LAW 1986-60) (SEE DETAIL "O")
 - SUBJECT TO EASEMENT (BY-LAW 1986-60) (SEE DETAIL "P")
 - SUBJECT TO EASEMENT (BY-LAW 1986-60) (SEE DETAIL "Q")
 - SUBJECT TO EASEMENT (BY-LAW 1986-60) (SEE DETAIL "R")
 - SUBJECT TO EASEMENT (BY-LAW 1986-60) (SEE DETAIL "S")
 - SUBJECT TO EASEMENT (BY-LAW 1986-60) (SEE DETAIL "T")
 - SUBJECT TO EASEMENT (BY-LAW 1986-60) (SEE DETAIL "U")
 - SUBJECT TO EASEMENT (BY-LAW 1986-60) (SEE DETAIL "V")
 - SUBJECT TO EASEMENT (BY-LAW 1986-60) (SEE DETAIL "W")
 - SUBJECT TO EASEMENT (BY-LAW 1986-60) (SEE DETAIL "X")
 - SUBJECT TO EASEMENT (BY-LAW 1986-60) (SEE DETAIL "Y")
 - SUBJECT TO EASEMENT (BY-LAW 1986-60) (SEE DETAIL "Z")

SURVEYOR'S CERTIFICATE:
 I, ROBERT G. CUNNINGHAM, COUNTY LAND SURVEYOR, DO HEREBY CERTIFY THAT THE SURVEY AND PLAN ARE CORRECT AND IN ACCORDANCE WITH THE METRIC ACT, THE SURVEY ACT AND THE LAND TITLES ACT AND THE REGULATIONS THEREUNDER.
 THE SURVEY WAS COMPLETED ON THE 25TH DAY OF MARCH, 2002.
 DATE: MARCH 25, 2002
 ROBERT G. CUNNINGHAM
 COUNTY LAND SURVEYOR

BEARING NOTE:
 ALL BEARINGS ARE TRUE BEARINGS. THE BEARINGS ARE MEASURED FROM THE MERIDIAN. THE BEARINGS ARE MEASURED IN THE SENSE OF THE SURVEY. THE BEARINGS ARE MEASURED IN ACCORDANCE WITH THE METRIC ACT AND THE REGULATIONS THEREUNDER.
 DATE: MARCH 25, 2002

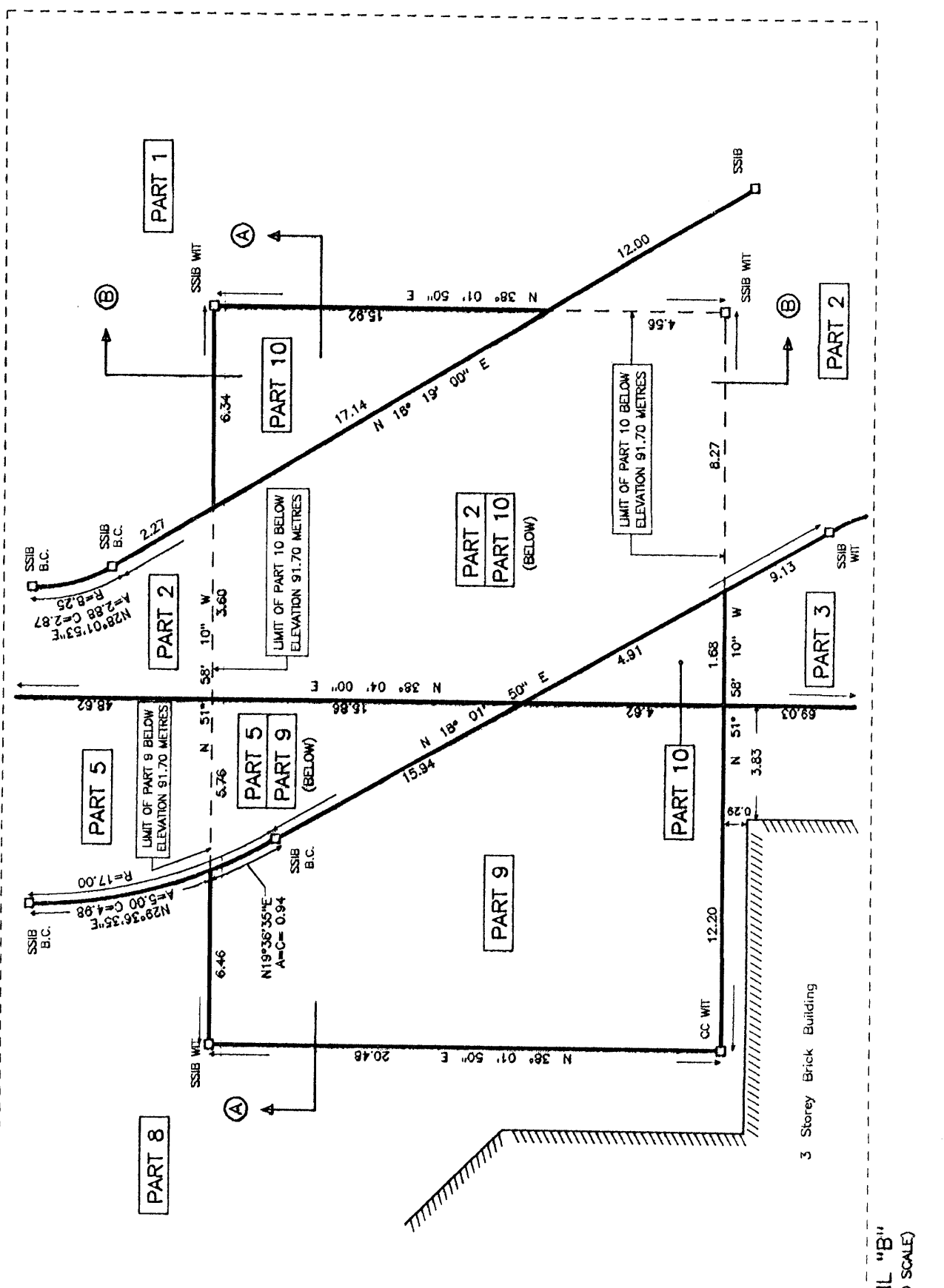
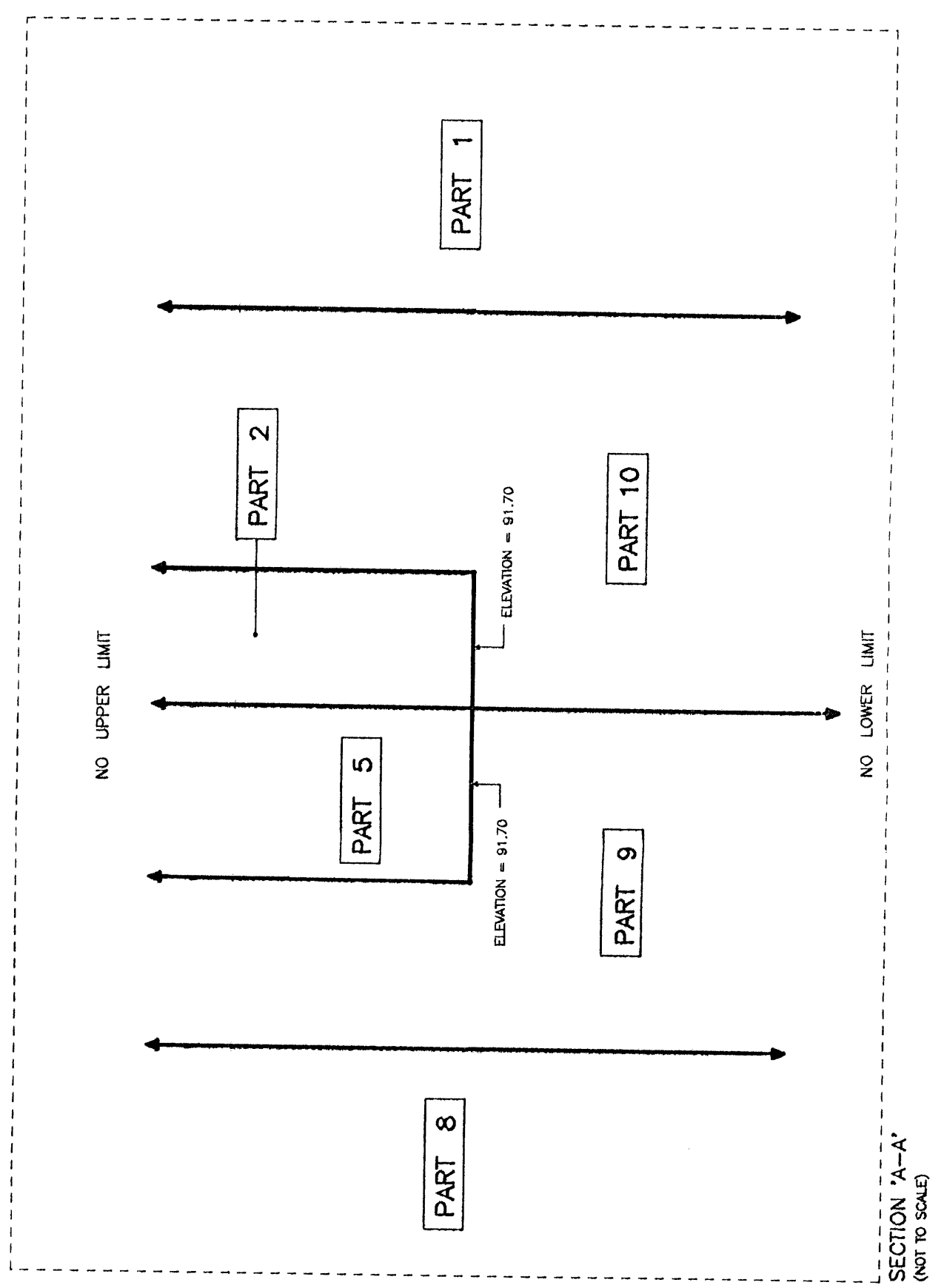
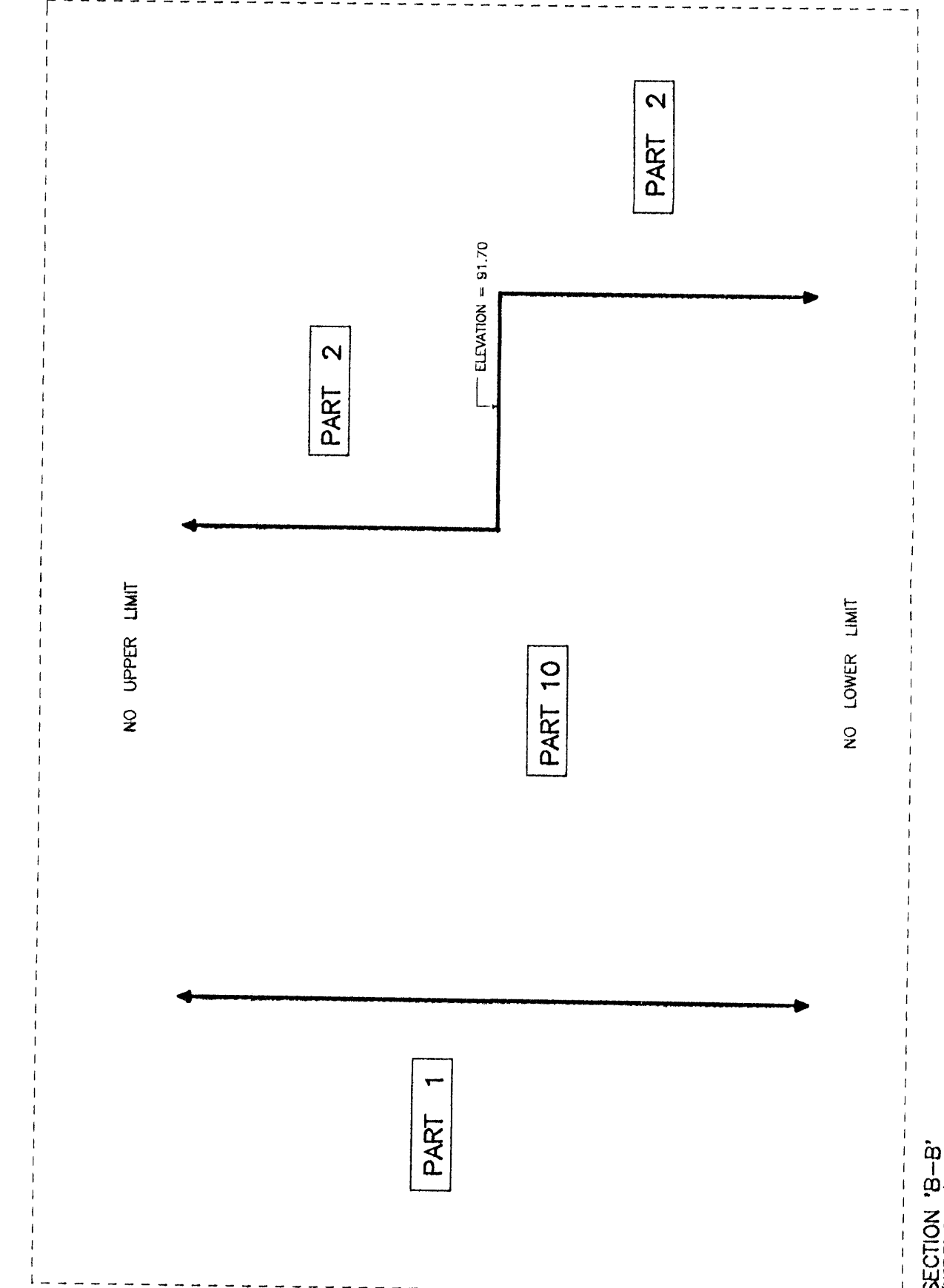
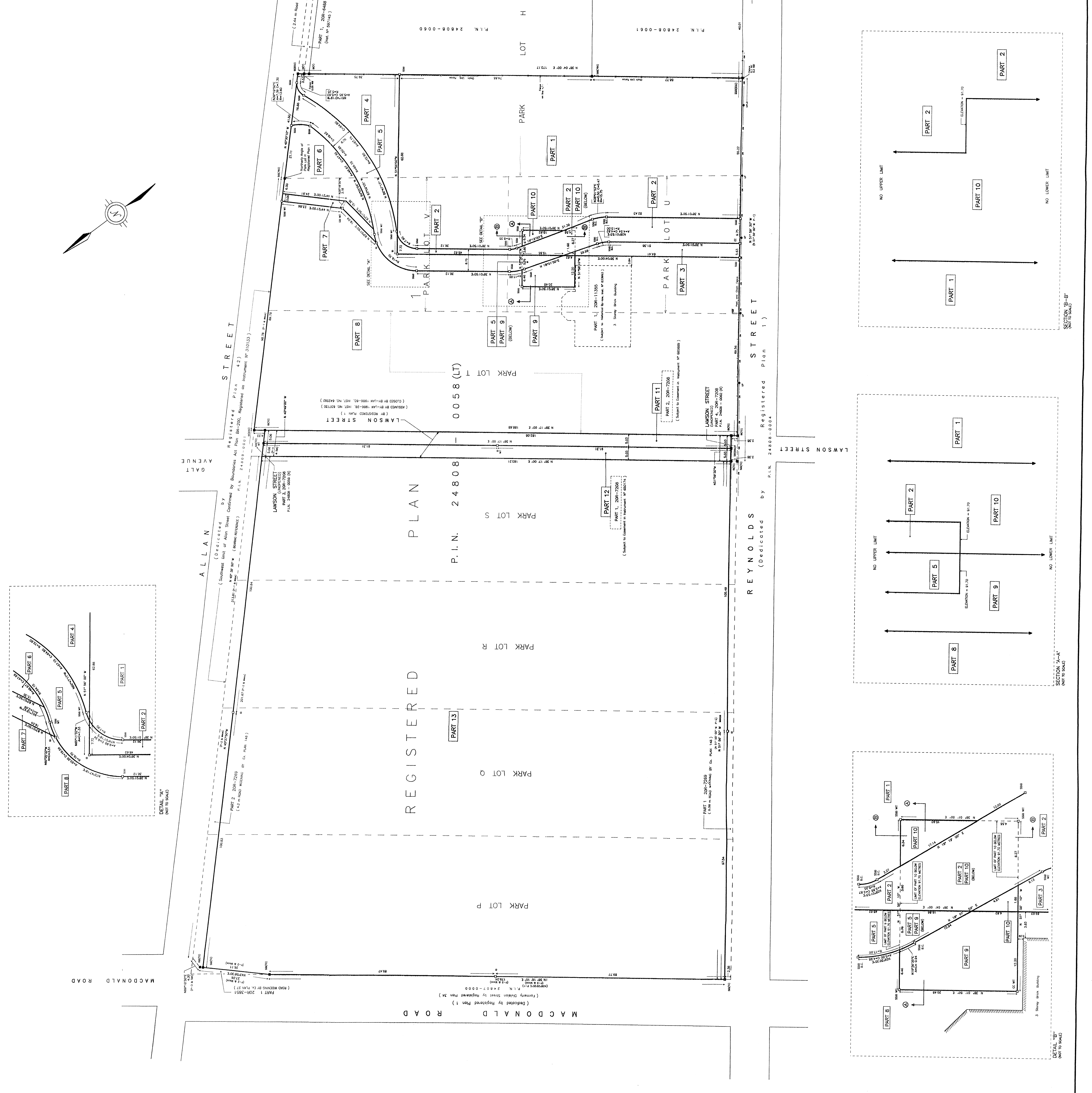
ELEVATION NOTE:
 ALL ELEVATIONS SHOWN HEREON ARE CORRECT AND ARE DERIVED FROM THE TOWN OF OAKVILLE DATUM. THE DATUM IS THE MEAN SEA LEVEL DATUM OF 1985.
 DATE: MARCH 25, 2002

PART SCHEDULE

PART	LOT/BLOCK	REGISTERED PLAN	P.I.N.	AREA (H.A.)
1	PARK LOT T, U, V			0.8152
2	PARK LOT U, V			0.0029
3	PARK LOT U, V			0.0339
4	PARK LOT U, V			0.0339
5	PARK LOT U, V			0.0339
6	PARK LOT U, V			0.0339
7	PARK LOT U, V			0.0339
8	PARK LOT U, V			0.0339
9	PARK LOT U, V			0.0339
10	PARK LOT U, V			0.0339
11	PARK LOT U, V			0.0339
12	PARK LOT U, V			0.0339
13	PARK LOT U, V			0.0339

PART 11 - SUBJECT TO EASEMENT IN INSTRUMENT N° 850569
 PART 12 - SUBJECT TO EASEMENT IN INSTRUMENT N° 850574

FILE COPY



FRED G. CUNNINGHAM INCORPORATED
 COUNTY LAND SURVEYOR
 1200 BRIDGE ROAD, SUITE 100
 OAKVILLE, ONTARIO L6M 3K7
 TEL: (905) 846-2000
 FAX: (905) 846-2001
 WWW.FGCI.COM