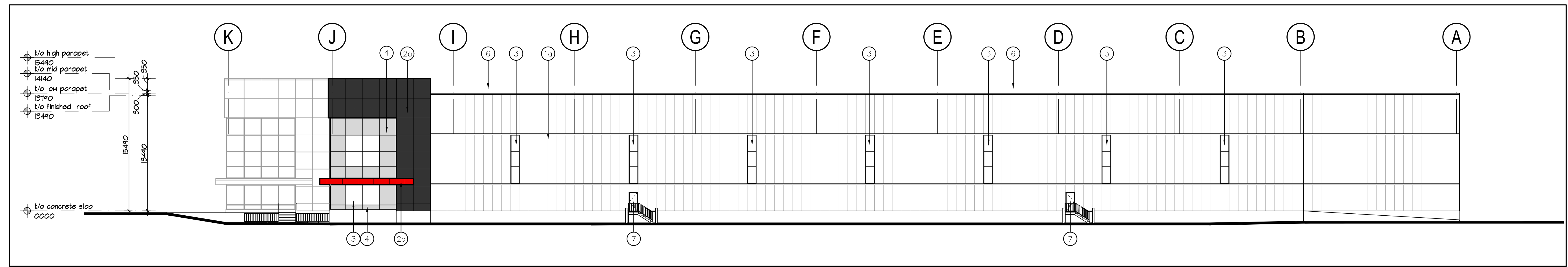
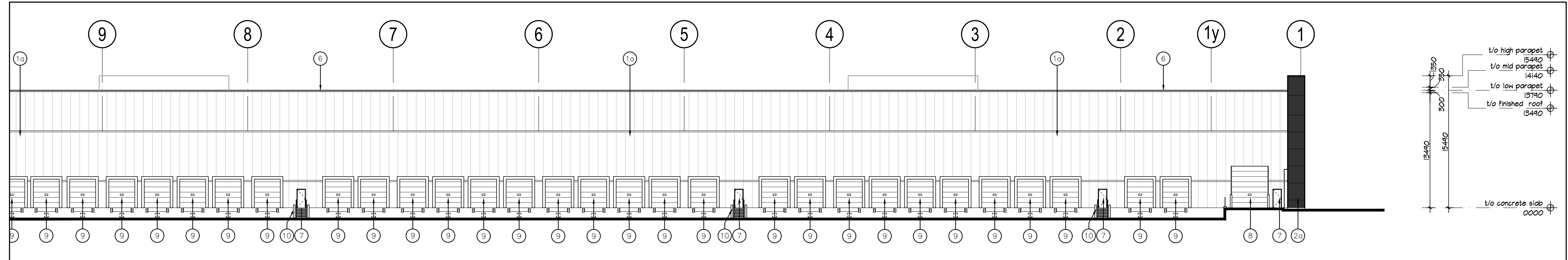


No.	ISSUED	DATE
1	ISSUED FOR REVIEW	OCT. 1, 2020
2	RE-ISSUED FOR SPA	MAR. 1 2021

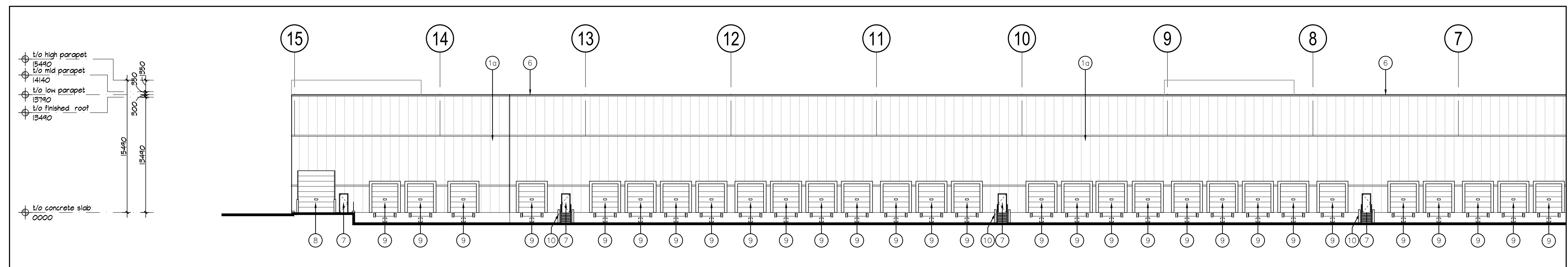
- ① INSULATED METAL PANELS BY KINGSPAN. TEXTURE TO BE FUTURE SELECTION BY ARCHITECT.
1a - COLOUR TO BE WHITE.
1b - COLOUR TO BE CHARCOAL GREY.
- ② ALUMINUM COMPOSITE PANELS BY ALPOLIC OR APPROVED EQUAL.
2a - COLOUR TO BE CHARCOAL GREY.
2b - COLOUR TO BE RED.
- ③ THERMAL GLAZING IN ALUMINUM CURTAIN WALL FRAMES.
- ④ SPANDREL GLAZING IN ALUMINUM CURTAIN WALL FRAMES.
- ⑤ ALUMINUM AND TEMPERED THERMAL GLASS DOOR(S) IN ALUMINUM CURTAIN WALL DOOR FRAMING SYSTEM. COLOUR TO MATCH WINDOW GLAZING SYSTEM.
- ⑥ PRE-FINISHED METAL COPING BY VICWEST OR APPROVED EQUAL. COLOUR TO MATCH MATERIAL BELOW.
- ⑦ INSULATED HOLLOW METAL DOOR IN PRESSED STEEL FRAMES. COLOUR TO MATCH ADJACENT MATERIAL.
- ⑧ INSULATED HOLLOW METAL SECTIONAL OVERHEAD DOOR C/W 305mm x 200mm (WxH) LEXAN INSERT. 4270mm x 4880mm (WxH). COLOUR TO BE FUTURE SELECTION.
- ⑨ INSULATED HOLLOW METAL SECTIONAL OVERHEAD DOOR C/W DOCK SEAL, DOCK LEVELLER, DOCK BUMPERS AND 305mm x 200mm (WxH) LEXAN INSERT. 3050mm (W) X 3355mm (H). COLOUR TO BE WHITE.
- ⑩ STEEL GRATE EXTERIOR STAIR. PRIMED & MARINE OIL BASE PAINTED GREY.
- ⑪ SCUPPER.



① West Elevation
A-3.1 Scale = 1:250



② Partial South Elevation
A-3.1 Scale = 1:250



③ Partial South Elevation
A-3.1 Scale = 1:250

No.	REVISION	DATE
-----	----------	------

BALDASSARRA
Architects Inc.

30 Great Gulf Drive, Unit 20 | Concord ON | L4K 0K7
T: 905.660.0722 | www.baldassarra.ca



OWNERS INFORMATION:

560 Winston Churchill Blvd.

Oakville, Ontario

ELEVATIONS
Building C

DATE:	DRAWN BY:	CHECKED:	SCALE:
SEPT. 2020	LY		AS NOTED
PROJECT No.	DRAWING No.		

18-51 C

A-3.1

01/2020 560_Winston_Churchill_Dr_01_Concord_Ontario_Canada_CAD_01.dwg