

A photograph of a street intersection. In the foreground, there is a grassy area on the left and a paved road with white and yellow lane markings. In the middle ground, a traffic light is visible on the left, and a person is walking across the street. The background shows trees with some autumn-colored leaves and a clear blue sky with a few clouds. A semi-transparent white box with a grid pattern is overlaid on the center of the image, containing the title and subtitle text.

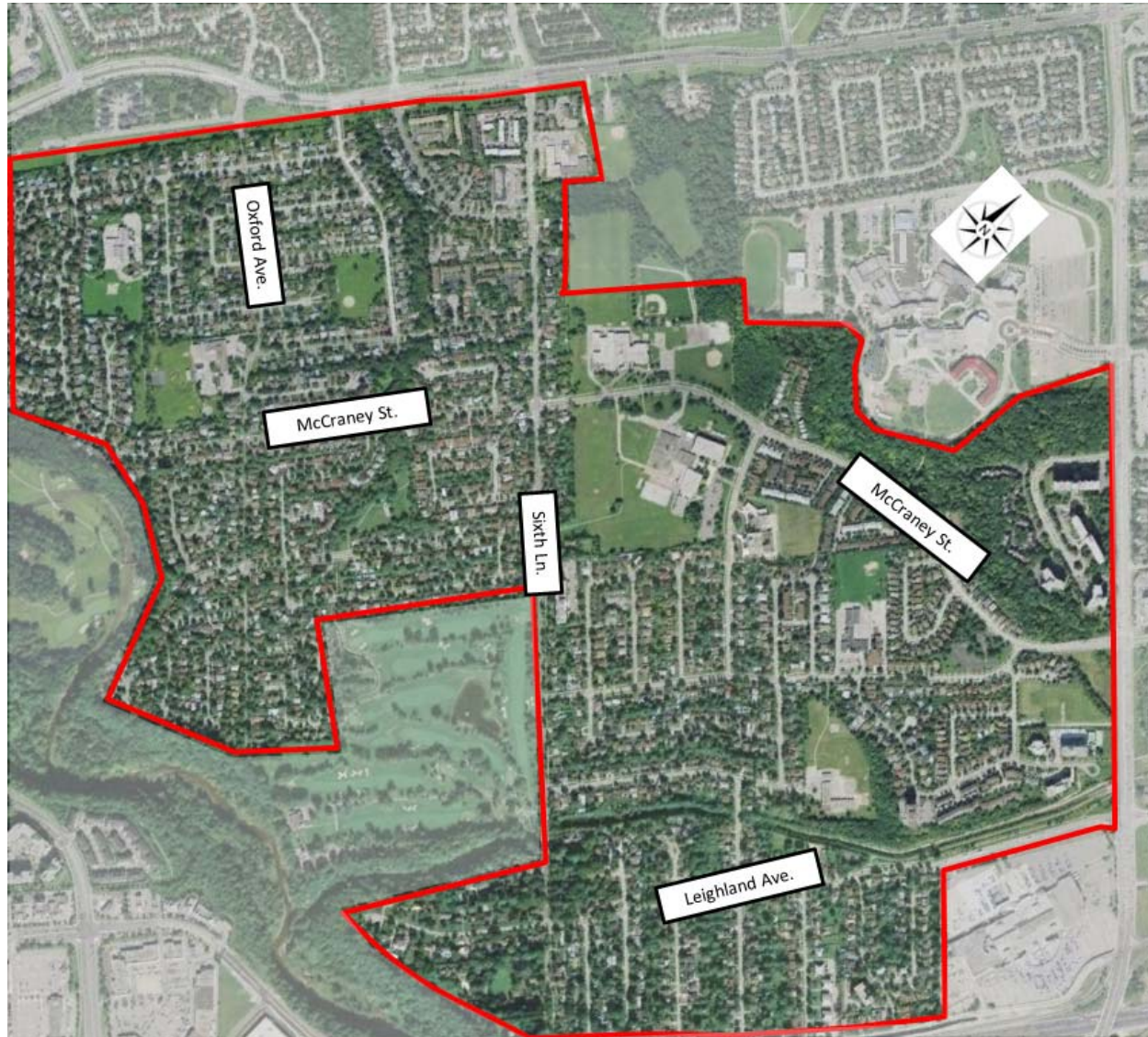
College Park Area Transportation Study

**Public Information Centre #1
January 28, 2015**

Agenda

- Introductions
- Study Area & Purpose
- Areas of Concern
- Study Scope
- Existing Conditions
- Next Steps
- Break-out Discussions

Study Area



Study Purpose

- Address previously expressed neighbourhood concerns related to:
 - School Areas
 - Parent Drop-off / Pick-ups
 - Pedestrian Crossings
 - Traffic Operations, Speed, Volume
- Traffic Safety

Areas of Concern



Study Scope

- Review background reports, studies
- Traffic operational assessment of Sixth & McCraney / Sixth & Miller
- Review collisions in areas of concern
- Review of MPS on McCraney @ WOSS
- Review of school zones, drop-offs
- Review of speed, volume concerns
- Review of pedestrian connections/crossings

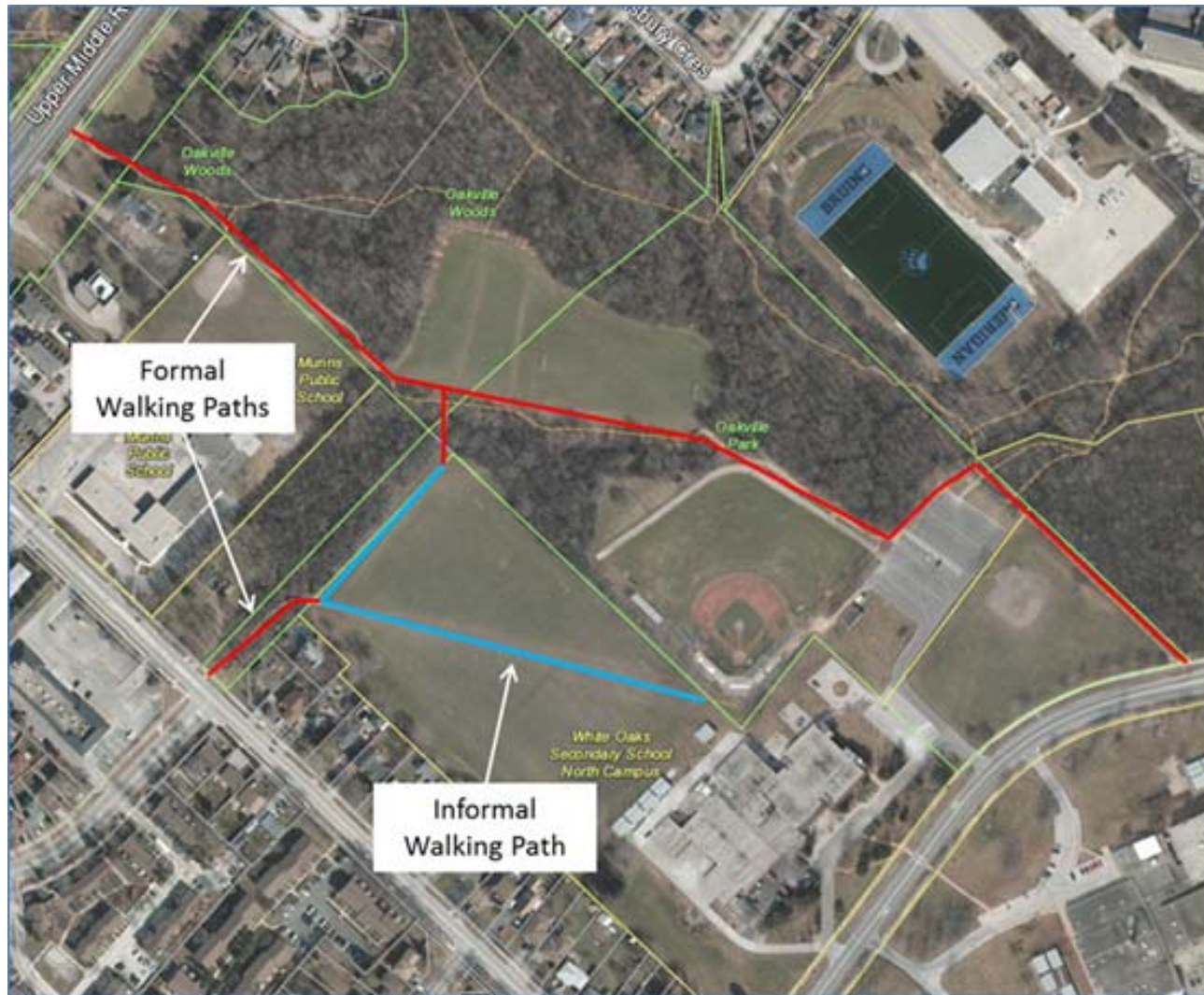
Consultation

- Meetings with stakeholders
 - School Boards
 - Parent / teacher groups
 - School councils
- Develop potential alternatives
- Two Public Information Centres (PIC)

Existing Conditions

- Sixth & McCraney congested
- MPS on McCraney operating better than PXO
- Speeds, drop-off/pick-up @ Montclair & Sunningdale
- Speeds on Ridge
- Pedestrian paths/connections/ crossings in study area

Existing Conditions



Next Steps

- Develop and evaluate alternative improvements
- Stakeholder meeting #2
- PIC #2
- Prepare project report

Break-out Discussion

- Move to South Atrium
- Group discussions for each area of concern
- Staff and consultants on-hand for discussion
- Comment sheets available



Thank you!