



Explore Oakville – Probable Ash Tree Locations

The information in this article applies to:

Item: Explore Oakville

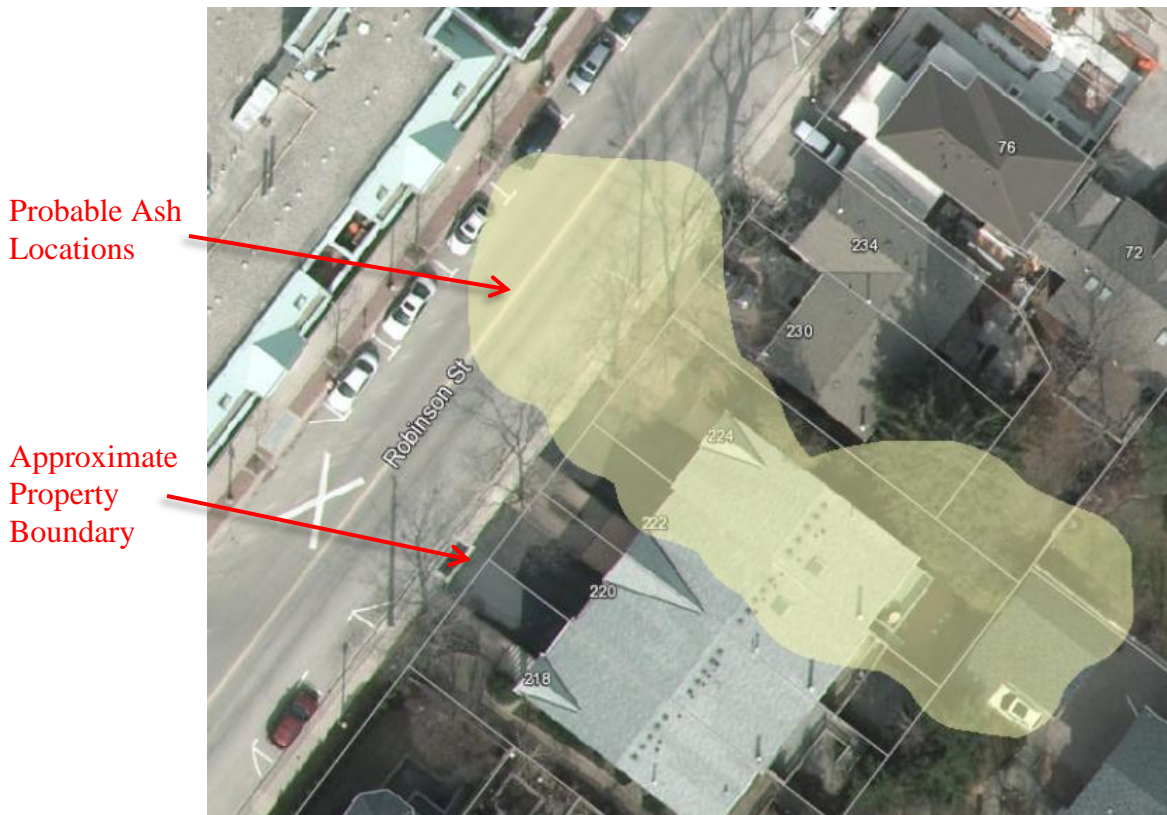
Version: 2013

Hardware/Software: Software

Purpose of this tutorial:

The purpose of this tutorial is to illustrate how to locate and identify areas of probably Ash tree locations.

1. By visiting the link on <http://maps.oakville.ca/gxmaps/?map=map13>, by default Explore Oakville will open in the Probably Ash Tree Locations view, which illustrates the results of the Town's initiative to map Ash trees in Oakville.



If the information in this article did not resolve your issue please contact the I.T. Help Desk at ext. 4357

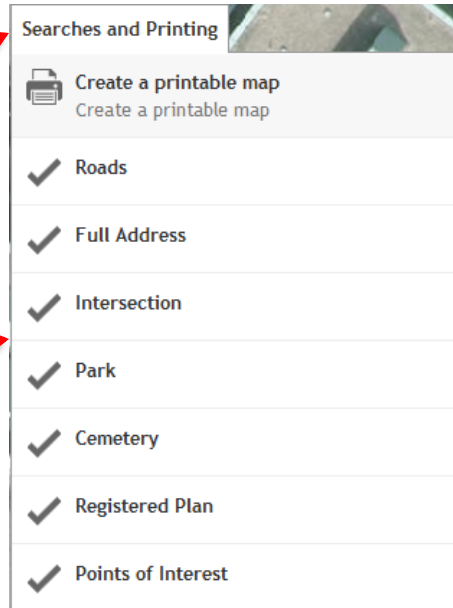
Created on 12/4/2013 1:37:00 PM



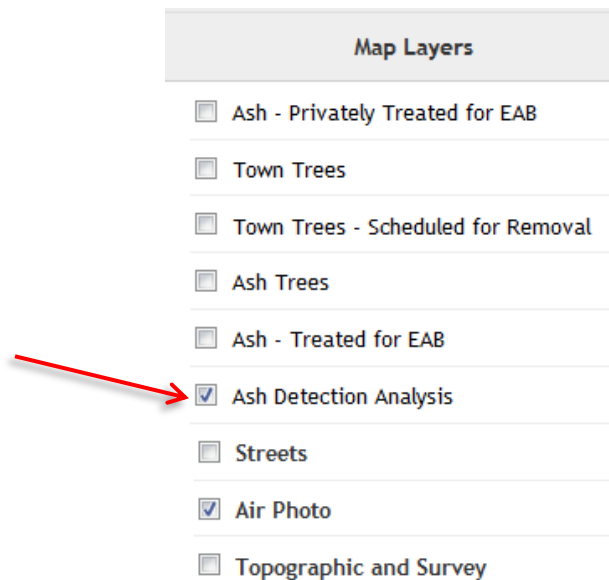
2. Search for a Full Address, Road, Park, etc. using the “Searches and Printing” button

Click Searches and Printing

Choose what to Search for

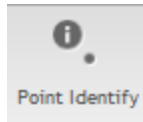


3. Note the map layers. You can turn any of the individual layers on or off by clicking the box beside the name of the individual layer.







4. We can view feature details by clicking the “Point Identify” button in the top main toolbar



5. With the “Point Identify” tool active click a feature on the map. When a point on the map is clicked all features at that point are identified. The information is displayed in the left-hand window.

Identify Results (2)

 **Tree ID: 77662**
Species: Locust, honey - Gleditsia triacanthos
Status: EXISTING

 **Polaris Pin: 247790153**
Short Legal Description: PT ROBINSON ST,
PL 1 , BTN OAKVILLE HARBOUR AND DUNN
ST ; OAKVILL
Area (m): 9626

6. If you wish to view a different map theme, click the map theme list in the top banner at the top of the page, or click “Maps” to return to the “Town Map”.



7. That concludes the tutorial on Probable Ash Tree Locations.



Notes:

The Town of Oakville and its partners used cutting edge remote sensing and image processing technology, and advanced spatial analysis to identify, catalogue and map probable locations of the ash trees. This is indicated by the areas in light yellow; however, these regions should only be used to suggest probable locations, and not to guarantee the presence of an Ash tree.

TIPS:

Date Created: December 4, 2013