

- Legend**
- PROPERTY LINE
 - - - LIMIT OF WORK
 - EXISTING TREES
 - PROPOSED TREES
 - ▨ SHRUB PLANTING
 - ▨ ORNAMENTAL GRASS PLANTING
 - ▨ SOD (TYPE 1)
 - ▨ SOD (TYPE 2)
 - ▨ UPLAND SEED MIX
 - ▨ LOW LYING SEED MIX
 - ▨ THRESHOLD PAVING
 - ▨ CONCRETE PAVING W/ BROOM FINISH
 - ▨ PLAZA PAVING (TYPE 1)
 - ▨ PLAZA PAVING (TYPE 2)
 - ▨ PLAZA PAVING (TYPE 3)
 - ▨ BENCH (TYPE 1)
 - ▨ BENCH (TYPE 2)
 - ▨ BENCH (TYPE 3)
 - ▨ BENCH (TYPE 4)
 - ▨ BENCH (TYPE 5)
 - ▨ BIKE RACK
 - ▨ COMBINED WASTE RECEPTACLE
 - ▨ TABLE & UMBRELLA
 - ▨ BICYCLE REPAIR STATION
 - ▨ BOLLARD
 - ▨ LIGHT STANDARDS (REFER TO ELECTRICAL)

- GENERAL NOTES:**
1. Drawings not to be used for construction unless authorized by the Landscape Architect.
 2. Contractor shall report any discrepancies between the drawings and site conditions prior to commencement of the work.
 3. All utility locates are the responsibility of the Contractor. Hand dig within the limits recommended by the service utility. Utility conflicts with proposed tree locations must be reported immediately to the Landscape Architect.
 4. Sixteen Mile Community Centre & Library base drawing provided by Diamond Schmitt Architects.
 5. For Sixteen Mile Community Centre grading information refer to drawing by MTE Consultants.
 6. North Park Sports Park base drawings provided by The MBTW Group.
 7. Landscape drawings show engineering information for design purposes only. Do not construct engineering works from these drawings.

**PLANTING PLAN
AREA A**

North Park Development: Community Centre,
Library and Sports Park, Oakville, ON

ISSUED FOR SITE PLAN
APPROVAL. NOT FOR
CONSTRUCTION.

DATE	ISSUE	BY

DATE	REVISIONS	BY
Jan 27 2022	Issued for Construction	

GSP Group Inc. 1000 Steeles Ave. East, Suite 100, Scarborough, Ontario M1S 1T7
www.gspgroup.ca

Date: October 2021
Scale: 1:300 @ 35x48
Drawn By: MZ, BR
Project No: 21337

L1.40

PLANT SCHEDULE COMMUNITY

QTY	BOTANICAL NAME	COMMON NAME	SIZE	CONTAINER	REMARKS	
8	Larix laricina	Larch	175cm Ht.	W.B./B&B	Native	
3	Picea glauca	White Spruce	175cm Ht.	W.B./B&B	Native	
4	Picea canadensis	White Pine	175cm Ht.	W.B./B&B	Native	
DECIDUOUS TREES						
QTY	BOTANICAL NAME	COMMON NAME	SIZE	CONTAINER	REMARKS	
39	Acer freemanii 'Jeffersand' TM	Ashum Size Maple	60cm Cal.	W.B./B&B	Native Cultivar	
2	Acer saccharum	Sugar Maple	60cm Cal.	W.B./B&B	Native	
5	Ameiobacter grandiflora Robin Hill	Apple Serviceberry	175cm Ht.	W.B./B&B	Clump Form	
6	Betula papyrifera	Paper Birch	60cm Cal.	W.B./B&B	Native Clump Form	
48	Carya ovata	Shagbark Hickory	60cm Cal.	W.B./B&B	Native	
16	Celtis occidentalis	Common Hackberry	60cm Cal.	W.B./B&B	Native	
3	Juglans nigra	Black Walnut	60cm Cal.	W.B./B&B	Native	
27	Malus x 'Dorji'	Dorji Crabapple	40cm Cal.	W.B./B&B	Native	
7	Platanus occidentalis 'Bloodgood'	Linden Plane Tree	60cm Cal.	W.B./B&B	Native	
14	Quercus macrocarpa	Burr Oak	60cm Cal.	W.B./B&B	Native Cultivar	
5	Tilia americana	Basswood	60cm Cal.	W.B./B&B	Native	
DECIDUOUS SHRUBS						
QTY	BOTANICAL NAME	COMMON NAME	SIZE	CONTAINER	SPACING	REMARKS
50	Juniperus horizontalis 'Hughes'	Hughes Juniper	60cm	3 gal.	1.2m	
DECIDUOUS SHRUBS						
QTY	BOTANICAL NAME	COMMON NAME	SIZE	CONTAINER	SPACING	REMARKS
6	Asterobolus albidus	Saskatoon Serviceberry	1.5m	3 gal.	1.5m	Native
18	Asterobolus albidus	Saskatoon Serviceberry	60cm	3 gal.	0.9m	Native
210	Ceanothus americanus	New Jersey Tea	60cm	3 gal.	0.9m	Native
313	Cornus sericea 'Farrow' TM	Acidic Red Dogwood	60cm	3 gal.	0.9m	Native
265	Diervilla lonicera	Deer Bush Honeysuckle	60cm	3 gal.	0.9m	Native
29	Rhus aromatica	Fragrant Sumac	3 gal.	3 gal.	1.5m	Native
902	Rhus aromatica 'Gro-Low'	Gro-Low Fragrant Sumac	60cm	3 gal.	1.5m	Native
368	Rosa blanda	Smooth Rose	40cm	3 gal.	1.2m	Native
ORNAMENTAL GRASSES						
QTY	BOTANICAL NAME	COMMON NAME	SIZE	CONTAINER	SPACING	REMARKS
1398	Bouteloua gracilis	Blue Grama Grass	40-60cm	1 gal.	0.6m	Native
200	Calamagrostis canadensis 'Karl Foerster'	Feather Reed Grass	40-60cm	1 gal.	0.6m	Native
118	Panicum virgatum 'Heavy Metal'	Heavy Metal Switch Grass	40-60cm	1 gal.	0.6m	Native Cultivar

PLANTING NOTES:

1. ALL PLANT MATERIAL SHALL BE NO. 1 NURSERY GROWN, MEETING SPECIFICATIONS FOR SIZE, HEIGHT, SPREAD, GRADING, QUALITY, METHOD OF CULTIVATION, AND BALLING AND BALLING SPECIFICATIONS AS SET OUT IN THE 8TH EDITION 2000 GUIDE SPECIFICATION FOR NURSERY STOCK PREPARED BY THE CNLA.
2. NO SUBSTITUTIONS IN SPECIES, CULTIVAR, QUANTITY, SIZE OR CONDITION WILL BE PERMITTED WITHOUT THE WRITTEN APPROVAL OF THE CONSULTANT. ANY UNAPPROVED SUBSTITUTIONS WILL BE REQUIRED TO BE REMOVED FROM THE SITE AT THE EXPENSE OF THE CONTRACTOR.
3. ANY NONCONFORMITIES FOUND IN THE QUANTITIES AS SHOWN ON THE PLAN AND THE PLANT LIST SHALL BE IMMEDIATELY REPORTED TO THE CONSULTANT.
4. LAYOUT SHALL BE THE RESPONSIBILITY OF THE CONTRACTOR. LAYOUT, PLANT STAKE-OUT AND DELIVERED PLANT MATERIAL SHALL BE APPROVED BY THE CONSULTANT PRIOR TO INSTALLATION.
5. NATIVE OR IMPORTED TOPSOIL SHALL BE TESTED AS SPECIFIED AND APPROVED BY THE CONSULTANT PRIOR TO ADDING ANY AMENDMENTS AND PLACEMENT. PLANTING MIX WHERE INDICATED SHALL FOLLOW THE MIX SPECIFICATIONS.
6. PROVIDE ADEQUATE MAXIMUM DEPTH OF APPROVED TOPSOIL OR PLANTING MIX IN ALL BEDS, UNLESS OTHERWISE NOTED. ALL BEDS SHALL BE MULCHED WITH APPROVED MULCH TO A MINIMUM DEPTH OF 75MM UNLESS OTHERWISE NOTED. DEPTHS SHALL BE THOSE ACHIEVED UNDER LIGHT COMPACTION. AREAS TO BE SOILED OR SEEDED SHALL BE PROVIDED WITH 100 MM OF APPROVED TOPSOIL, COMPACTED TO 95% PD.
7. NO BARE-ROOT PLANTING SHALL BE PERMITTED BETWEEN MAY 15 AND OCTOBER 15.
8. PLANT MATERIAL SHALL BE THOROUGHLY WATERED AT THE TIME OF PLANTING.
9. THOSE AREAS NOT SPECIFICALLY IDENTIFIED FOR PLANTING, OR OTHERWISE NOTED, SHALL BE SOILED. SOILING SHALL BE MAINTAINED AND WARRANTED UNTIL FIRST CUT SEEDING SHALL BE MAINTAINED AND WARRANTED UNTIL OCTOBER 1 FOR SPRING SEEDING AND APRIL 1 FOR FALL SEEDING.
10. ALL TREES AND SHRUBS SHALL BE UNDER WARRANTY FOR A PERIOD OF 24 MONTHS COMMENCING ON THE DATE OF ACCEPTANCE.
11. THE CONTRACTOR SHALL PROVIDE MAINTENANCE IMMEDIATELY AFTER THE PLANTS ARE INSTALLED AND CONTINUE THROUGHOUT THE ENTIRE WARRANTY PERIOD. MAINTENANCE REQUIREMENTS SHALL INCLUDE ALL PROCEDURES CONSISTENT WITH PROPER HORTICULTURAL PRACTICES TO ENSURE NORMAL, VIGOROUS, AND HEALTHY GROWTH OF ALL MATERIAL PLANTED. ALL STAKES, WIRE, HOSE AND OTHER ACCESSORIES MUST BE REMOVED PRIOR TO FINAL WARRANTY INSPECTION.
12. ALL PLANT MATERIAL USED AS REPLACEMENTS FOR UNACCEPTABLE MATERIAL SHALL BE OF THE SAME QUALITY AND REQUIREMENTS PRESCRIBED FOR THE ORIGINAL MATERIAL. REPLACEMENTS SHALL BE MADE ONCE UNDER THE WARRANTY.

GROWING MEDIUM NOTES:

1. GROWING MEDIUM TESTING:
 - 1.1 GROWING MEDIUMS (TOPSOIL, PLANTING MIXES) AND ORGANIC AMENDMENTS MUST BE TESTED BY AN OMAFRA ACCREDITED AGENCY AND APPROVED PRIOR TO USE. TEST TOPSOIL FOR P, K, Ca AND Mg. MINOR ELEMENT VALUES, SOLUBLE SALT CONTENT, ORGANIC MATTER, TEXTURE AND PH VALUE APPROPRIATE FOR THE ESTABLISHMENT AND GROWTH OF ORNAMENTAL NURSERY STOCK. SUBMIT TEST RESULTS AND ANALYSIS INCLUDING RECOMMENDATIONS FOR AMENDMENTS AND FERTILIZER TO THE CONSULTANT.
2. TOPSOIL:
 - 2.1 TOPSOIL SHALL BE FERTILE, FRIABLE, TOPSOIL, FREE OF FRAGMENTS LARGER THAN 75MM IN SIZE, STONES OVER 25MM IN DIAMETER, DEBRIS, PLANTS OR THEIR ROOTS, STICKS, NOXIOUS SEEDS, STOLONS, SEEDS, SALTS, SOIL STERILANTS, CHEMICAL CONTAMINANTS, OR OTHER MATERIALS DETRIMENTAL TO PLANT GROWTH.
 - 2.2 FERTILIZER AND AMENDMENTS MUST BE MADE AS PER SOIL TESTING AGENCY RECOMMENDATIONS.
 - 2.3 ALL TOPSOIL FOR THE INTENSIVE USE LAWN AREAS SHALL BE SANDY LOAM CLASS ONLY.
 - 2.4 TOPSOIL SHALL NOT BE MOVED, DELIVERED OR WORKED ON WHILE IN A FROZEN STATE OR CONDITION.
3. GROWING MEDIUM - PLANTING MIXES:
 - 3.1 PLANTING MIX (WHERE SPECIFIED) SHALL BE THOROUGHLY COMBINED PRIOR TO PLACEMENT IN PLANTING BED AREAS TO THE FOLLOWING PROPORTIONS: 4 PARTS APPROVED TOPSOIL, 1 PART COMPOST, 1 PART SRECEDED PEAT MOSS AND AN APPLICATION OF HIGH PHOSPHORUS FERTILIZER (0-20-0).
 - 3.2 MIXES CONTAINING A SIGNIFICANT AMOUNT OF PEAT MOSS SHALL NOT BE PERMITTED TO DRY OUT. THE MOISTURE CONTENT OF THE PEAT MOSS AT THE TIME OF MIXING SHALL BE NOT LESS THAN 6% TO 7%.

4.0 FERTILIZER AND AMENDMENTS:

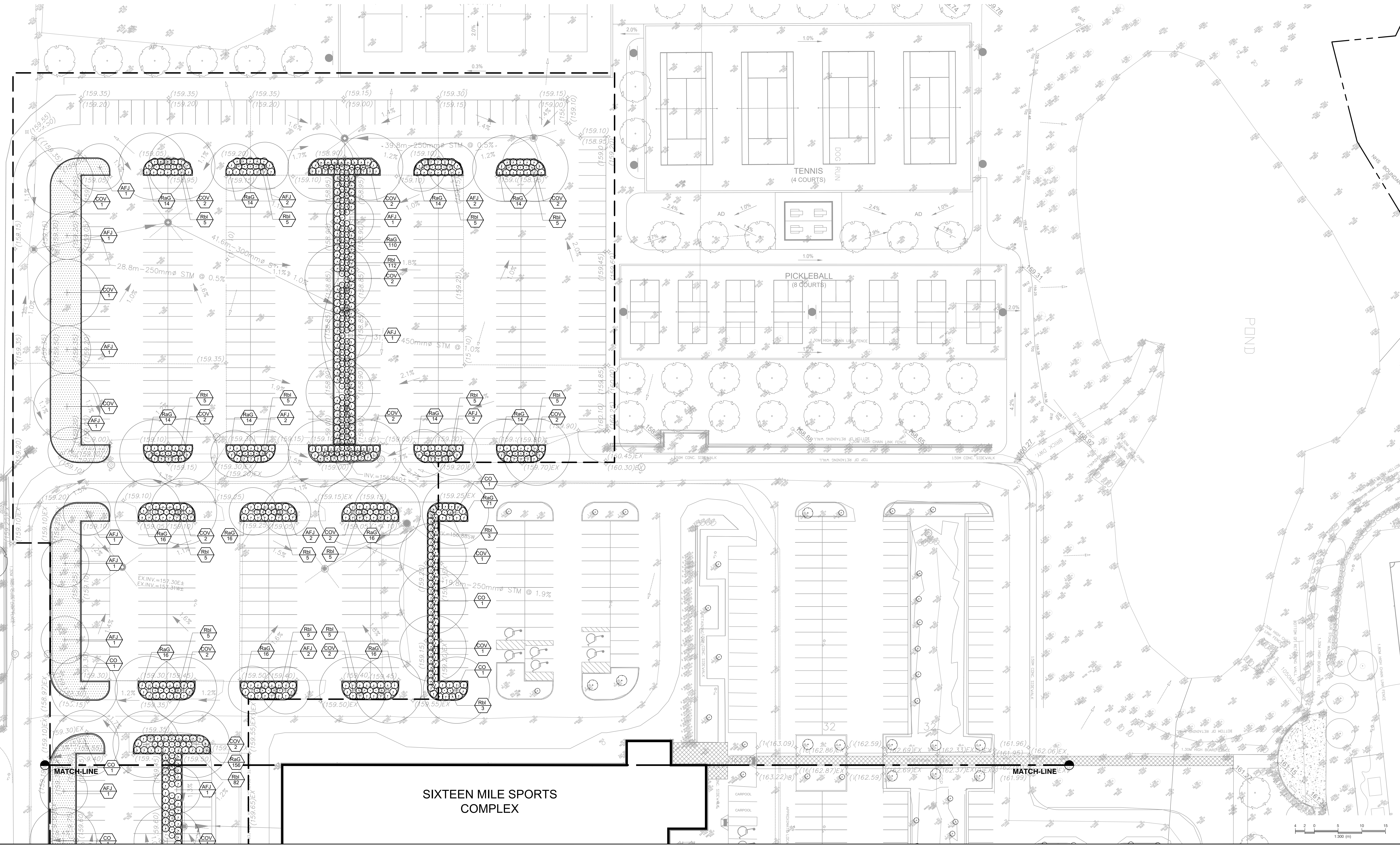
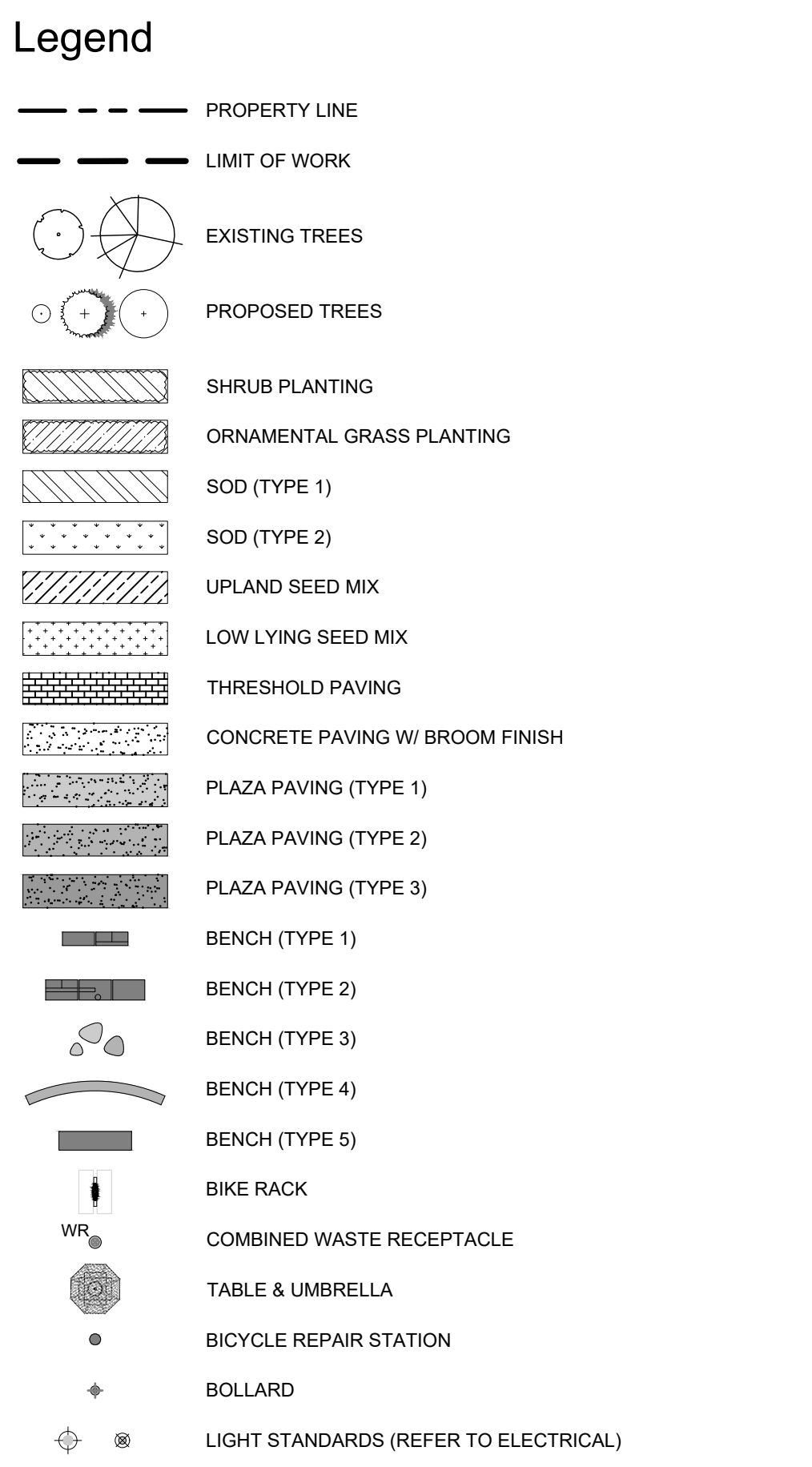
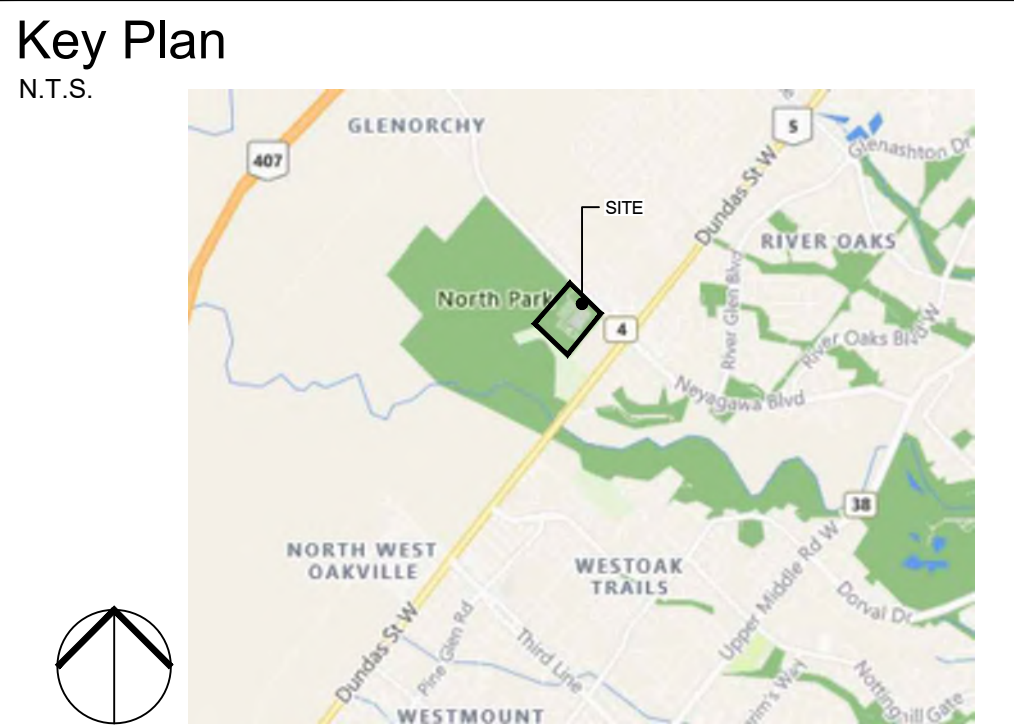
- 4.1 ORGANIC SOIL ADDITIVE: "0-0-0-BARK" FINE COMPOSTED PINE MULCH OR AN APPROVED ALTERNATIVE.
- 4.2 FERTILIZER: COMPLETE COMMERCIAL FERTILIZER WITH 50% OF THE ELEMENTS DERIVED FROM ORGANIC SOURCES.
- 4.3 PEAT MOSS: DECOMPOSED PLANT MATERIAL, FAIRLY ELASTIC AND HOMOGENOUS, FREE OF RECOMPOSED COLLOIDAL RESIDUE, WOOD, SULPHUR AND IRON AND OF BROWN COLOUR CONTAINING MAXIMUM 6% ORGANIC MATTER BY WEIGHT, MOISTURE CONTENT NOT EXCEEDING 15% AND PH VALUE OF 3.4 - 5.5.
- 4.4 COMPOST AND MANURE: SHALL MEET THE STANDARDS FOUND IN THE INTERIM GUIDELINES FOR THE PRODUCTION AND USE OF AEROBIC COMPOST IN ONTARIO PUBLISHED BY THE ONTARIO MINISTRY OF ENVIRONMENT AND ENERGY (MCEE). MANURE SHALL BE WELL ROTTED, UNBLEACHED, LITTLE MANURE, FREE FROM HARMFUL CHEMICALS AND OTHER NOXIOUS SUBSTANCES, AT LEAST EIGHT MONTHS OLD, BUT NOT MORE THAN TWO YEARS OLD AND WITH NO MORE THAN 2% STRAW LEAVES OR OTHER MATERIALS. PHYSICAL CONTAMINANTS SUCH AS ROCK, PLASTIC, METAL OR GLASS SHALL BE LESS THAN 0.5% TOTAL CARBON TO NITROGEN RATIO IN THE RESULTING GROWING MEDIUM SHALL NOT EXCEED 30:1.
- 4.5 LIME: LIMESTONE CONTAINING NOT LESS THAN 8% OF CALCIUM AND MAGNESIUM CARBONATES COMBINED, FINELY GROUND TO PASS A 75 MESH SIEVE WITH AT LEAST ONE HALF PASSING A 100 MESH SIEVE. RATE OF APPLICATION SHALL BE DETERMINED AFTER THE PH OF THE TOPSOIL.
- 4.6 BOHEMIAL: RAW, FINELY GROUND WITH A MINIMUM ANALYSIS OF 4% NITROGEN AND 20% PHOSPHORIC ACID.
- 4.7 SAND: SHARP, CLEAN SAND, TO OPSS 100-3.

UPLAND SEED MIXTURE:

1. TABLELAND PRAIRIE GRASS NATIVE SEED MIXTURE #165 BY OSC SEEDS OR APPROVED SUBSTITUTE
2. CONTAINS: BIG BLUESTEM (ANDRPOPOON GARARDII), CANADA WILD RYE (ELYMUS CANADENSIS), INDIAN GRASS (SORGHASTRUM NATIVUM), LITTLE BLUESTEM (SCHIZACHYRUM SCOPARIUM), PRAIRIE CORYDOGRASS (SPARTINA PECTINATA), SWITCHGRASS (PANICUM VIRGATUM) APPLY SEED MIXTURE AT 500 g/100 m² OR 25 g/m².
3. NURSE CROP TO BE SELECTED FROM CONSERVATION HALTONS LANDSCAPING AND TREE PRESERVATION GUIDELINES, APPENDIX 3, RECOMMENDED NURSE CROP SPECIES LIST. SPECIES SELECTION TO BE BASED ON THE SPRING OR FALL SOWING, AND SUBMITTED FOR APPROVAL WITH THE UPLAND SEED MIXTURE.
4. NURSE CROP TO BE MIXED WITH TABLELAND PRAIRIE GRASS NATIVE SEED MIXTURE PRIOR TO APPLICATION.
5. TO BE APPLIED WITH TERRA-SEEDING AS PER SPECIFICATION.

LOW LYING SEED MIXTURE:

1. SEASONALLY FLOODED NATIVE SEED MIXTURE #240 BY OSC SEEDS OR APPROVED SUBSTITUTE
2. CONTAINS: DEER TONGUE (PANICUM CLANDESTINUM), FOWL BLUEGRASS (POA CALYSTRENS), FOX SEDGE (CAREX VULPINOIDEA), KODONG BUR MARSHBLOOM (BISSUS CERUALA), OX-EYE SUNFLOWER (HELIANTHUS HELIANTHOIDES), SWITCHGRASS (PANICUM VIRGATUM), VIRGINIA WILD RYE (ELYMUS VIRGINICUS). APPLY SEED MIXTURE AT 500 g/100 m² OR 25 g/m².
3. NURSE CROP TO BE SELECTED FROM CONSERVATION HALTONS LANDSCAPING AND TREE PRESERVATION GUIDELINES, APPENDIX 3, RECOMMENDED NURSE CROP SPECIES LIST. SPECIES SELECTION TO BE BASED ON THE SPRING OR FALL SOWING, AND SUBMITTED FOR APPROVAL WITH THE UPLAND SEED MIXTURE.
4. NURSE CROP TO BE MIXED WITH SEASONALLY FLOODED NATIVE SEED MIXTURE PRIOR TO APPLICATION.
5. PREPARE SEED MIXTURE WITH PLANTING SOL AND APPLY TERRA-SEEDING AS PER SPECIFICATION.



SIXTEEN MILE SPORTS COMPLEX

- GENERAL NOTES:**
1. Drawings not to be used for construction unless authorized by the Landscape Architect.
 2. Contractor shall report any discrepancies between the drawings and site conditions prior to commencement of the work.
 3. All utility locations are the responsibility of the Contractor. Hand dig within the limits recommended by the service utility. Utility conflicts with proposed tree locations must be reported immediately to the Landscape Architect.
 4. Sixteen Mile Community Centre & Library base drawing provided by Diamond Schmidt Architects.
 5. For Sixteen Mile Community Centre grading information refer to drawing by MTE Consultants.
 6. North Park Sports Park base drawings provided by The MBTW Group.
 7. Landscape drawings show engineering information for design purposes only. Do not construct engineering works from these drawings.

PLANTING PLAN AREA B
 North Park Development: Community Centre, Library and Sports Park, Oakville, ON

ISSUED FOR SITE PLAN APPROVAL, NOT FOR CONSTRUCTION.

DATE	ISSUE	BY
Jan 27 2022	Issued for Construction	EL

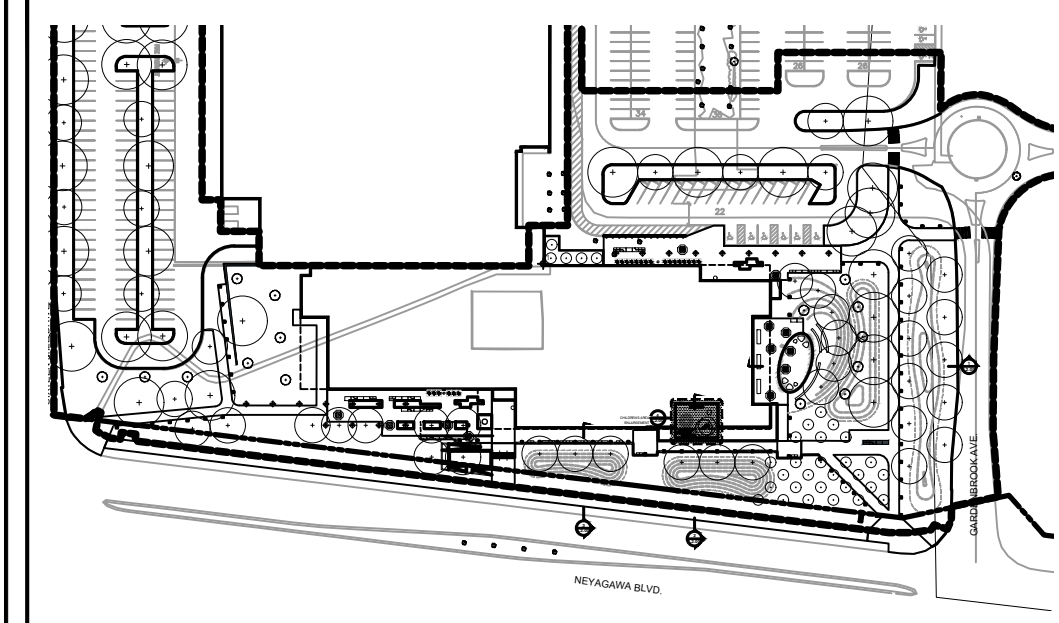
DATE	REVISIONS	BY
Jan 27 2022	Issued for Construction	EL

GSP group

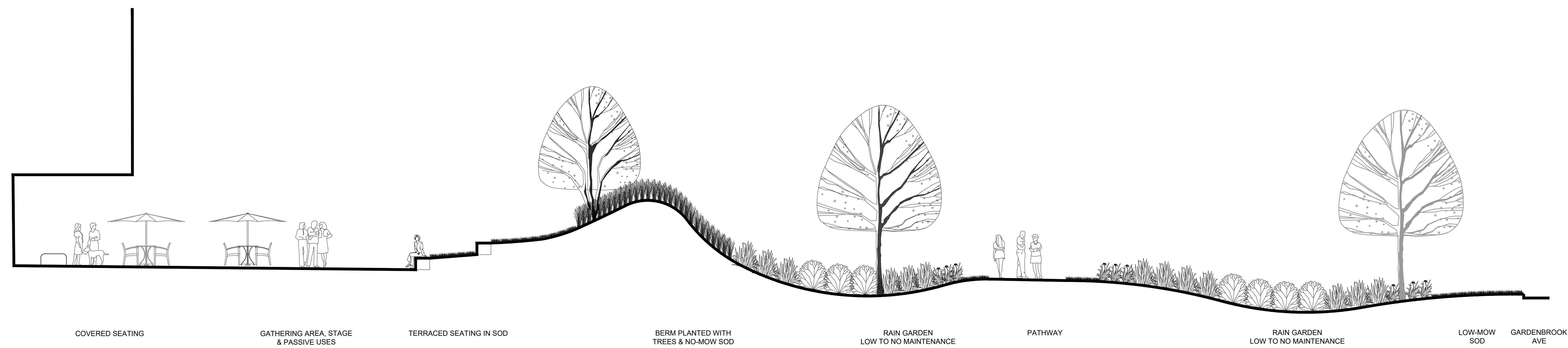
1500 Shear Court, Suite 201 | 1500 Shear Court, Suite 201
 Mississauga, Ontario L4X 1L7 | Mississauga, Ontario L4X 1L7
 www.gspgroup.ca

Date: October 2021 | Drawn By: MZ: BR
 Scale: 1:300 @ 34x48 | Project No.: 21337

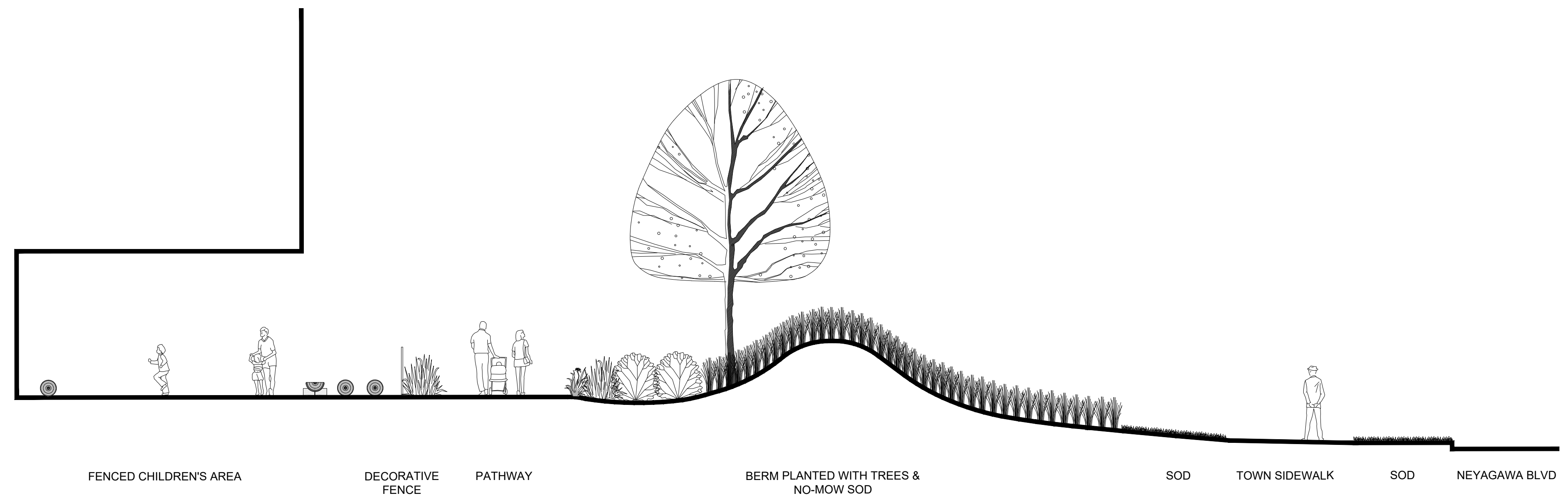
L1.41



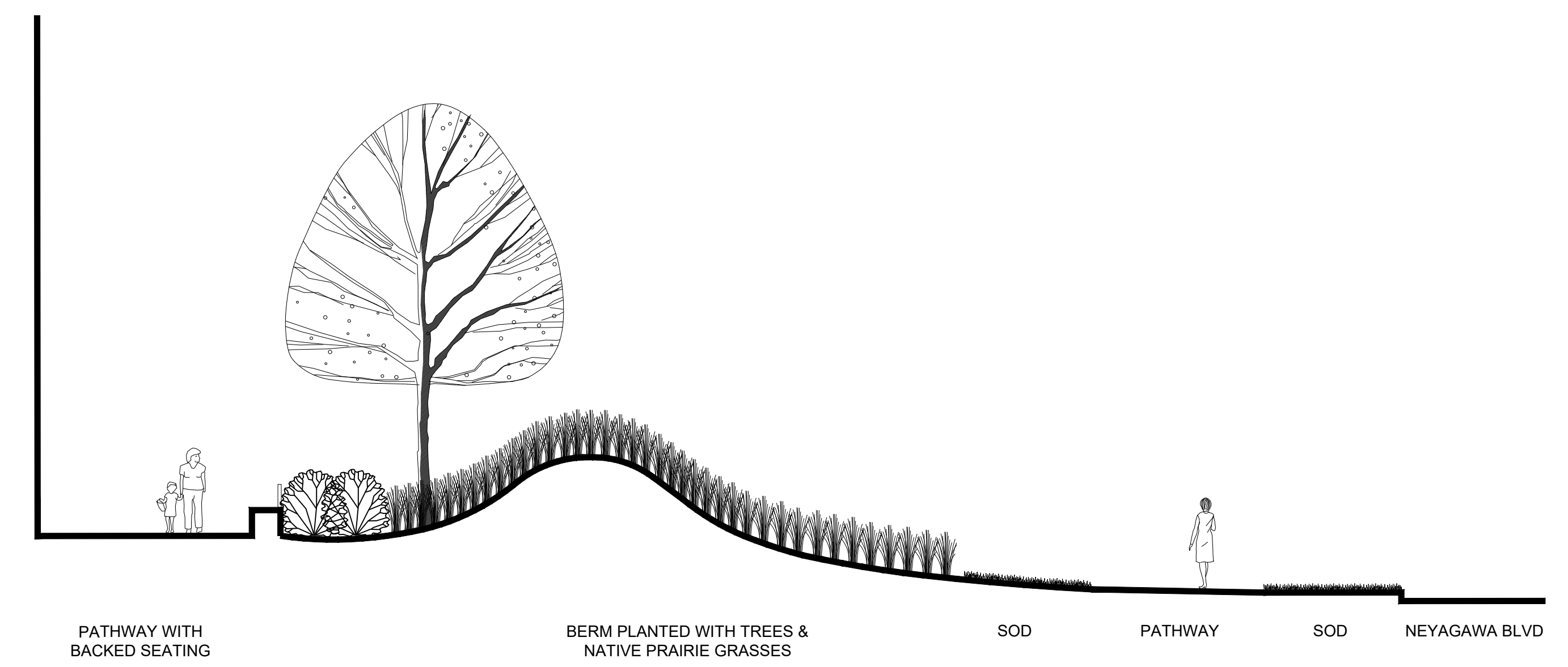
Legend



1 WEST SECTION
1:75

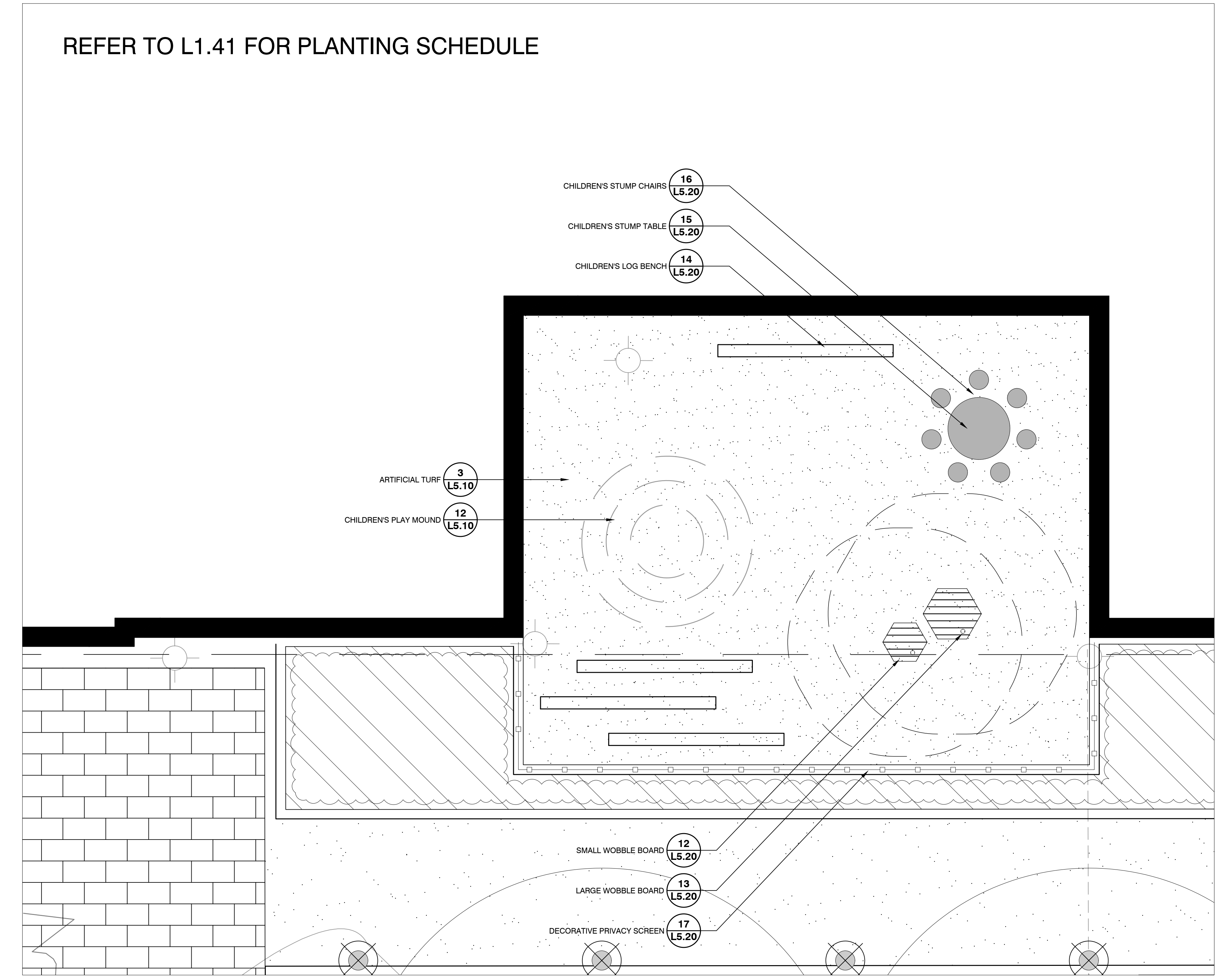


2 NORTH SECTION 1



3 NORTH SECTION 2

REFER TO L1.41 FOR PLANTING SCHEDULE



4 CHILDREN'S PLAY AREA ENLARGEMENT

- GENERAL NOTES:**
1. Drawings not to be used for construction unless authorized by the Landscape Architect
 2. Contractor shall report any discrepancies between the drawings and site conditions prior to commencement of the work
 3. All utility locates are the responsibility of the Contractor. Hand dig within the limits recommended by the service utility. Utility conflicts with proposed tree locations must be reported immediately to the Landscape Architect
 4. Sixteen Mile Community Centre & Library base drawing provided by Diamond Schmitt Architects.
 5. For Sixteen Mile Community Centre grading information refer to drawing by MTE Consultants.
 6. North Park Sports Park base drawings provided by The MBTW Group.
 7. Landscape drawings show engineering information for design purposes only. Do not construct engineering works from these drawings.

LANDSCAPE SECTIONS

North Park Development: Community Centre, Library and Sports Park, Oakville, ON

ISSUED FOR SITE PLAN APPROVAL. NOT FOR CONSTRUCTION.

DATE	ISSUE	BY

DATE	REVISIONS	BY
Dec. 22, 2021	Issued for Review	EE
Jan. 27, 2022	Issued for Coordination	EE

21500 Steeles Ave. East, Suite 201
Markham, Ontario L3R 0Y9
1-877-888-8888

100 West Beaver Creek, Suite 200
Richmond Hill, Ontario L4B 1N7
905-882-1177

www.gspgroup.ca

Date: October 2021
Scale: AS SHOWN
Project No.: 21537

L2.00