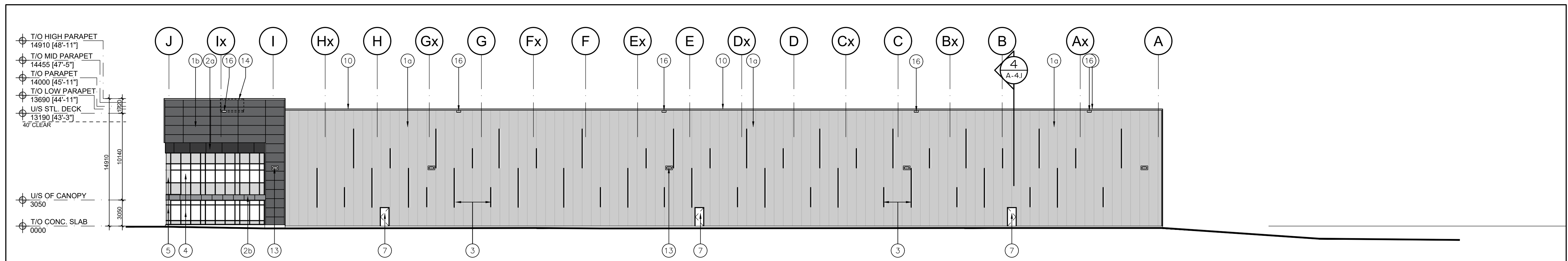
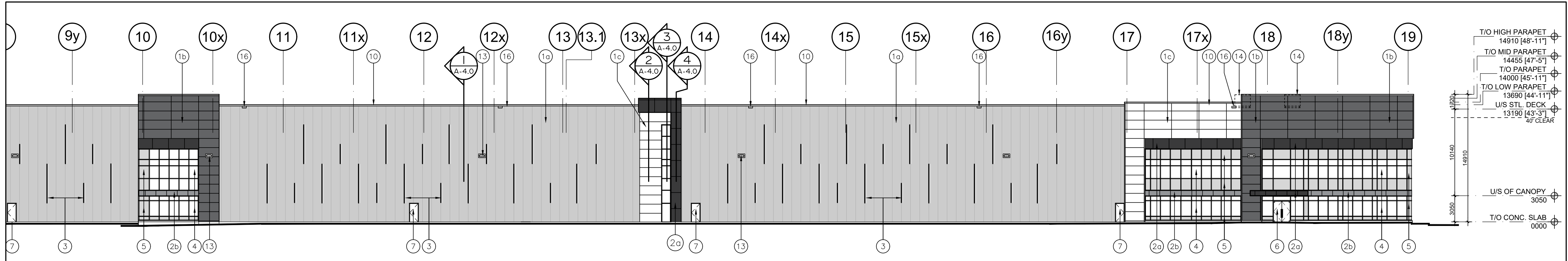


No.	ISSUED	DATE
1	ISSUED FOR COORDINATION	MAR. 30, 2021
2	ISSUED FOR SPA	APR. 9, 2021
3	RE-ISSUED FOR SPA	DEC. 15, 2021
4	RE-ISSUED FOR SPA	DEC. 16, 2022

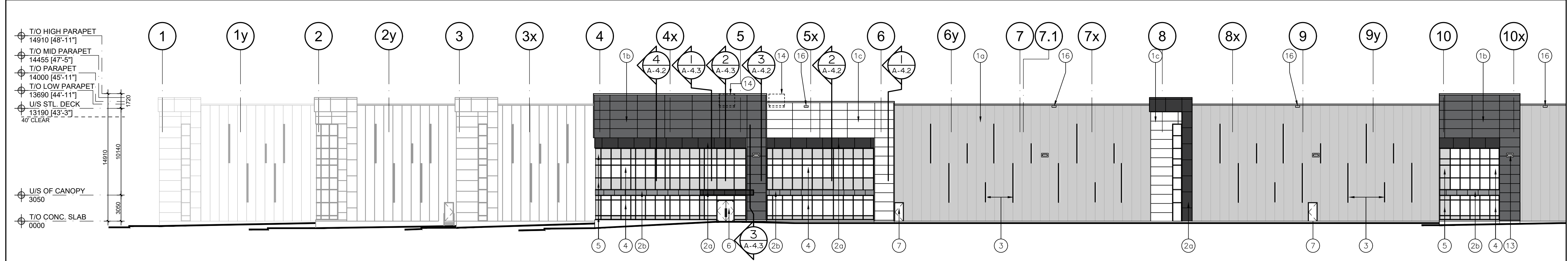
- LEGEND**
- 10 INSULATED METAL PANELS BY KINGSPAN KS SERIES WITH SHADOWLINE FINISH OR APPROVED EQUAL. COLOUR TO BE GREY. SAMPLE TO BE SUBMITTED FOR ARCHITECT'S APPROVAL.
 - 10b INSULATED METAL PANELS BY KINGSPAN KS SERIES WITH SHADOWLINE FINISH OR APPROVED EQUAL. COLOUR TO BE DARK GREY. SAMPLE TO BE SUBMITTED FOR ARCHITECT'S APPROVAL.
 - 10c INSULATED METAL PANELS BY KINGSPAN KS SERIES WITH SHADOWLINE FINISH OR APPROVED EQUAL. COLOUR TO BE WHITE. SAMPLE TO BE SUBMITTED FOR ARCHITECT'S APPROVAL.
 - 20 APOLIC COMPOSITE METAL PANELS COLOUR: CHARCOAL
 - 20b APOLIC COMPOSITE METAL PANELS COLOUR: LIGHT GREY
 - 3 PREFINISHED METAL "FIN" (TWO LENGTHS -> 2250 or 4540mm). COLOUR TO BE CHARCOAL GREY TO MATCH METAL PANELS.
 - 4 WINDOW- THERMAL DOUBLE GLAZING (GREY TINT) IN PREFINISHED ALUMINUM CURTAIN WALL FRAMES. COLOUR OF CURTAIN WALL CAPS: CHARCOAL ANODIZED ALUMINUM, C/W BIRD-FRIENDLY VISUAL MARKERS
 - 5 SPANDREL GLAZING IN PREFINISHED ALUMINUM CURTAIN WALL FRAMES. COLOUR OF SPANDREL: DARY GREY TINT; COLOUR OF CURTAIN WALL CAPS: CHARCOAL ANODIZED ALUMINUM
 - 6 CLEAR TEMPERED THERMAL GLASS AND ALUMINUM DOOR(S). COLOUR OF ALUMINUM TO MATCH CURTAIN WALL CAPS.
 - 7 MAN DOOR - INSULATED HOLLOW METAL DOOR PAINT COLOUR: TO MATCH ADJACENT METAL PANEL
 - 8 INSULATED HOLLOW METAL OVERHEAD DOOR C/W TEMPERED GLASS VIEW WINDOW. COLOUR TO BE GREY TO MATCH INSULATED METAL PANELS. C/W DOCK SEAL, DOCK LEVELLER AND DOCK BUMPERS.
 - 9 INSULATED HOLLOW METAL OVERHEAD DOOR C/W TEMPERED GLASS VIEW WINDOW. COLOUR TO BE GREY TO MATCH INSULATED METAL PANELS.
 - 10 PREFINISHED METAL CAP FLASHING. COLOUR TO MATCH METAL PANELS BELOW.
 - 11 STEEL GRATE EXTERIOR STAIR. PRIMED & MARINE OIL BASE PAINTED GREY.
 - 12 TINTED THERMAL GLAZING IN ALUMINUM CURTAIN WALL FRAMES. COLOUR OF GLASS AND FRAMES TO FUTURE SELECTION BY THE ARCHITECT. CAPS TO BE 50.8mm WIDE.
 - 13 LIGHTING - WALL PAC REFER TO ELECTRICAL DWGS.
 - 14 ROOF TOP UNITS. TO BE SCREENED FROM PUBLIC VIEW.
 - 15 STEEL GRATE EXTERIOR LADDER AND PLATFORM FOR FUEL LINE ACCESS. PRIMED & MARINE OIL BASE PAINTED GREY.
 - 16 RAIN WATER RELIEF SCUPPER.
 - 17 PRECAST CONCRETE WITH AGGREGATE FINISH. COLOUR TO BE WHITE.



3 North Elevation
A-3.0 Scale = 1:250



2 Partial East Elevation
A-3.0 Scale = 1:250



1 Partial East Elevation
A-3.0 Scale = 1:250

No.	REVISION	DATE
-----	----------	------



30 Great Gulf Drive, Unit 20 | Concord ON | L4K 0K7
T. 905.660.0722 | www.baldassarra.ca



OWNERS INFORMATION:



772 Winston Churchill Blvd.
Oakville, Ontario

ELEVATIONS
Building A

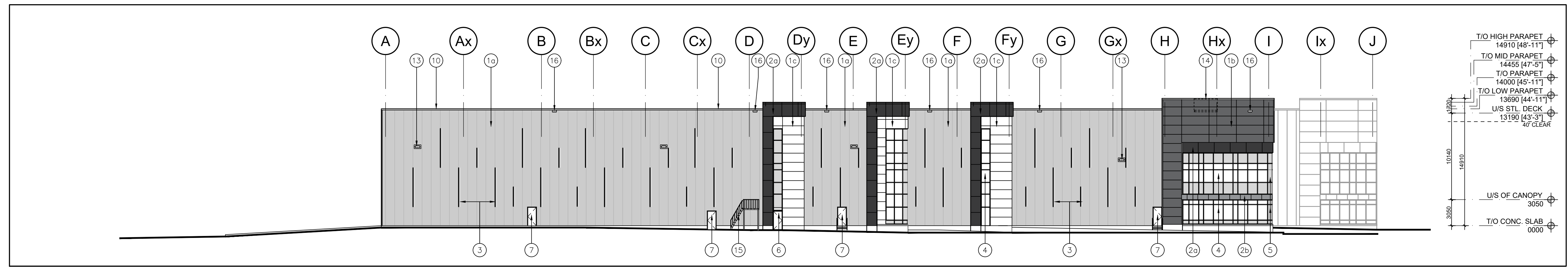
DATE:	DRAWN BY:	CHECKED:	SCALE:
MAR. 2021	HP		AS NOTED

PROJECT No. 22-77 A DRAWING No. A-3.0

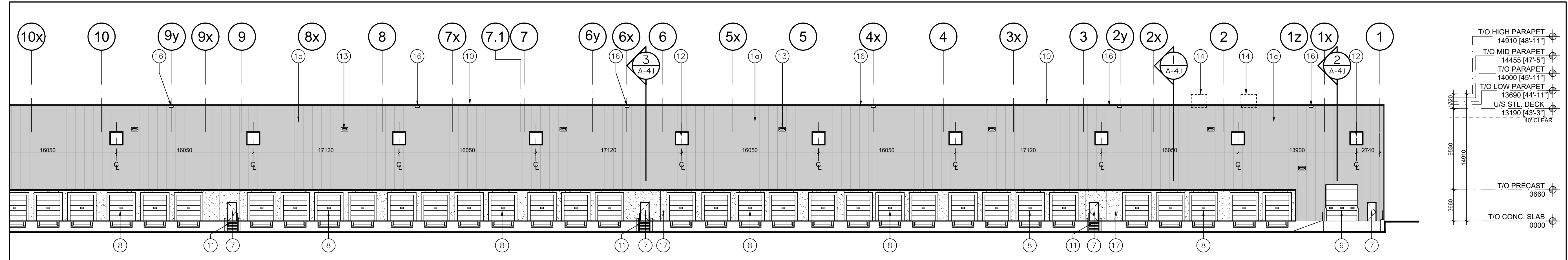
C:\2277 772 Winston Churchill - Fengate\Drawings\01 Current Drawings\Bldg A\2277 A-A-3.0.dwg, 2022-12-20 2:48:42 PM, Lousy, AutoCAD PDF (General Documentation).pc3

No.	ISSUED	DATE
1	ISSUED FOR COORDINATION	MAR. 30, 2021
2	ISSUED FOR SPA	APR. 9, 2021
3	RE-ISSUED FOR SPA	DEC. 15, 2021
4	RE-ISSUED FOR SPA	DEC. 16, 2022

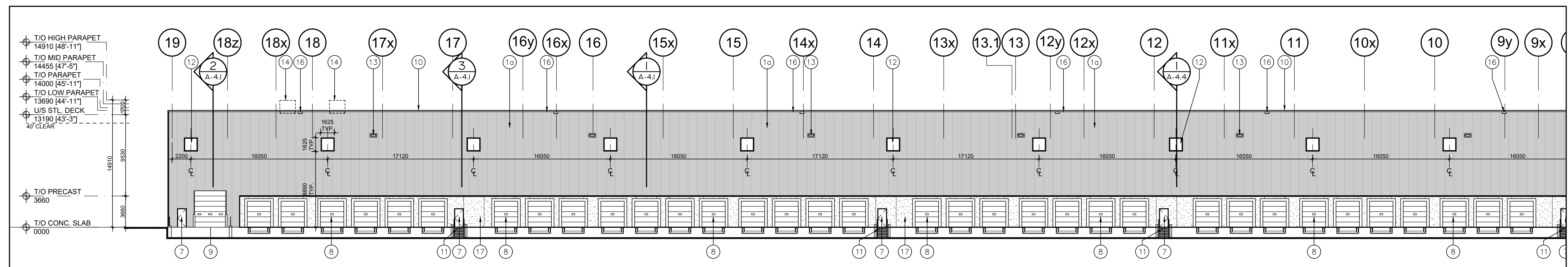
- LEGEND**
- 10 INSULATED METAL PANELS BY KINGSPAN KS SERIES WITH SHADOWLINE FINISH OR APPROVED EQUAL. COLOUR TO BE GREY. SAMPLE TO BE SUBMITTED FOR ARCHITECT'S APPROVAL.
 - 11 INSULATED METAL PANELS BY KINGSPAN KS SERIES WITH SHADOWLINE FINISH OR APPROVED EQUAL. COLOUR TO BE DARK GREY. SAMPLE TO BE SUBMITTED FOR ARCHITECT'S APPROVAL.
 - 12 INSULATED METAL PANELS BY KINGSPAN KS SERIES WITH SHADOWLINE FINISH OR APPROVED EQUAL. COLOUR TO BE WHITE. SAMPLE TO BE SUBMITTED FOR ARCHITECT'S APPROVAL.
 - 20 APOLIC COMPOSITE METAL PANELS COLOUR: CHARCOAL
 - 2b APOLIC COMPOSITE METAL PANELS COLOUR: LIGHT GREY
 - 3 PREFINISHED METAL "FIN" (TWO LENGTHS -> 2250 or 4540mm). COLOUR TO BE CHARCOAL GREY TO MATCH METAL PANELS.
 - 4 WINDOW- THERMAL DOUBLE GLAZING (GREY TINT) IN PREFINISHED ALUMINUM CURTAIN WALL FRAMES. COLOUR OF CURTAIN WALL CAPS: CHARCOAL ANODIZED ALUMINUM, C/W BIRD-FRIENDLY VISUAL MARKERS
 - 5 SPANDREL GLAZING IN PREFINISHED ALUMINUM CURTAIN WALL FRAMES. COLOUR OF SPANDREL: DARY GREY TINT; COLOUR OF CURTAIN WALL CAPS: CHARCOAL ANODIZED ALUMINUM
 - 6 CLEAR TEMPERED THERMAL GLASS AND ALUMINUM DOOR(S). COLOUR OF ALUMINUM TO MATCH CURTAIN WALL CAPS.
 - 7 MAN DOOR - INSULATED HOLLOW METAL DOOR. PAINT COLOUR: TO MATCH ADJACENT METAL PANEL
 - 8 INSULATED HOLLOW METAL OVERHEAD DOOR C/W TEMPERED GLASS VIEW WINDOW. COLOUR TO BE GREY TO MATCH INSULATED METAL PANELS. C/W DOCK SEAL, DOCK LEVELLER AND DOCK BUMPERS.
 - 9 INSULATED HOLLOW METAL OVERHEAD DOOR C/W TEMPERED GLASS VIEW WINDOW. COLOUR TO BE GREY TO MATCH INSULATED METAL PANELS.
 - 10 PREFINISHED METAL CAP FLASHING. COLOUR TO MATCH METAL PANELS BELOW.
 - 11 STEEL GRATE EXTERIOR STAIR. PRIMED & MARINE OIL BASE PAINTED GREY.
 - 12 TINTED THERMAL GLAZING IN ALUMINUM CURTAIN WALL FRAMES. COLOUR OF GLASS AND FRAMES TO BE GREY TO MATCH INSULATED METAL PANELS. CAPS TO BE 50.8mm WIDE.
 - 13 LIGHTING - WALL PAC REFER TO ELECTRICAL DWGS.
 - 14 ROOF TOP UNITS, TO BE SCREENED FROM PUBLIC VIEW.
 - 15 STEEL GRATE EXTERIOR LADDER AND PLATFORM FOR FUEL LINE ACCESS. PRIMED & MARINE OIL BASE PAINTED GREY.
 - 16 RAIN WATER RELIEF SCUPPER.
 - 17 PRECAST CONCRETE WITH AGGREGATE FINISH. COLOUR TO BE WHITE.



3 South Elevation
A-3.0 Scale = 1:250



2 Partial West Elevation
A-3.0 Scale = 1:250



1 Partial West Elevation
A-3.0 Scale = 1:250

No.	REVISION	DATE
-----	----------	------

BALDASSARRA
Architects Inc.

30 Great Gulf Drive, Unit 20 | Concord ON | L4K 0K7
T. 905.660.0722 | www.baldassarra.ca



OWNERS INFORMATION:

FENGATE

772 Winston Churchill Blvd.
Oakville, Ontario

ELEVATIONS Building A			
DATE: MAR. 2021	DRAWN BY: HP	CHECKED:	SCALE: AS NOTED
PROJECT No. 22-77 A		DRAWING No. A-3.1	

C:\2277 772 Winston Churchill - Fengate\Drawings\01 Current Drawings\Bldg A\2277 A.A-3.1.dwg, 2022-12-20 2:48:47 PM, LouisY, AutoCAD PDF (General Documentation).pc3