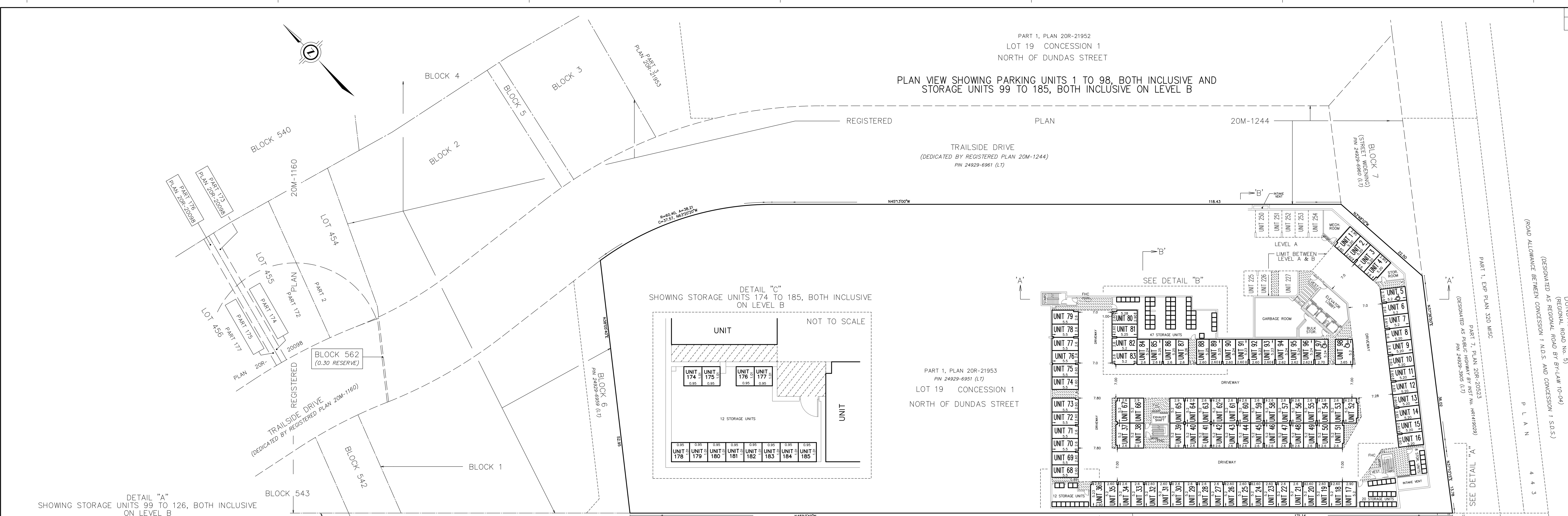
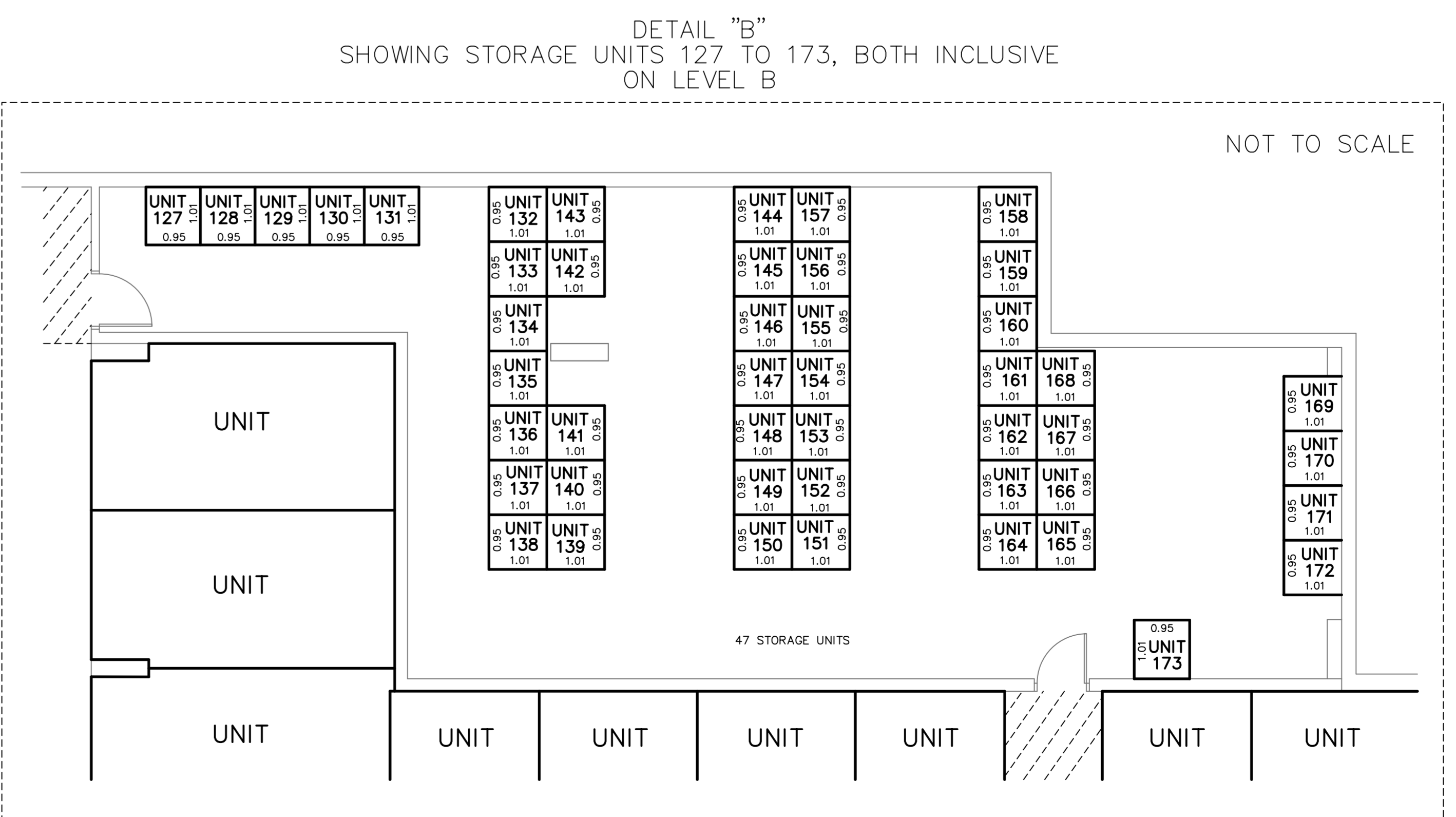
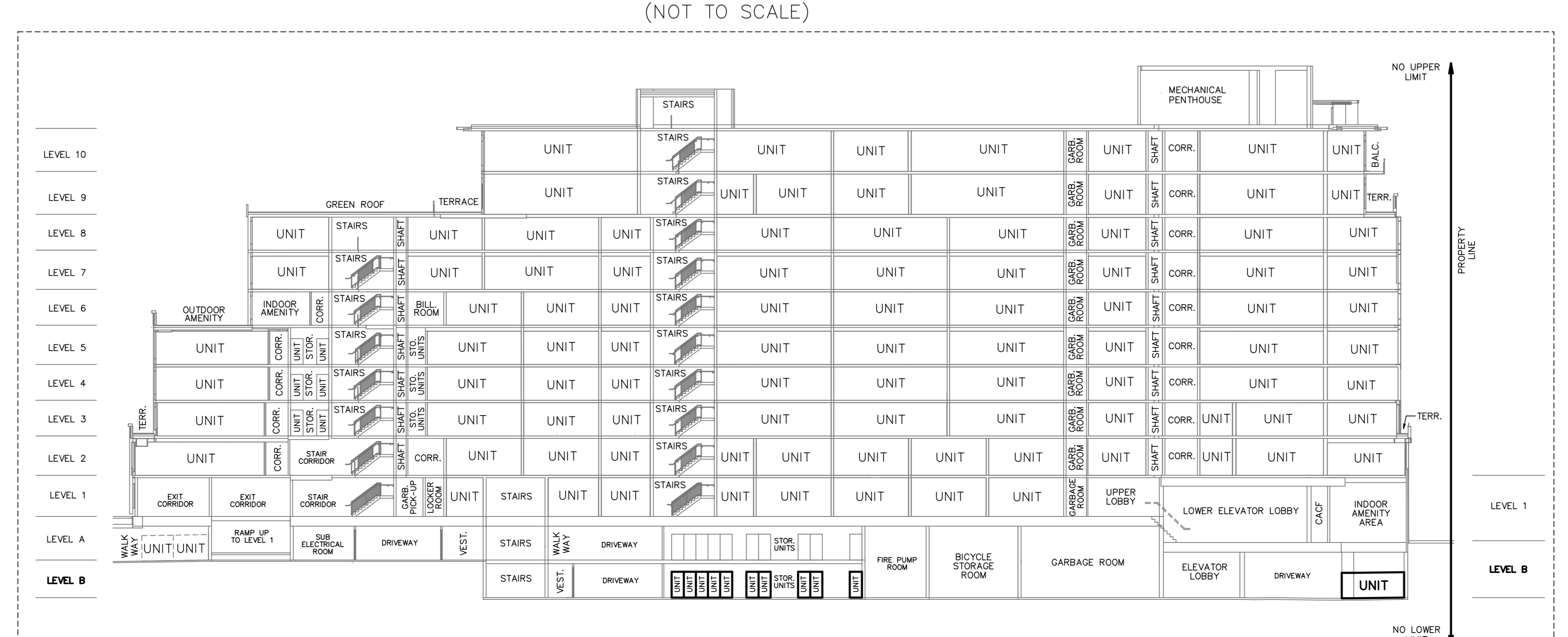
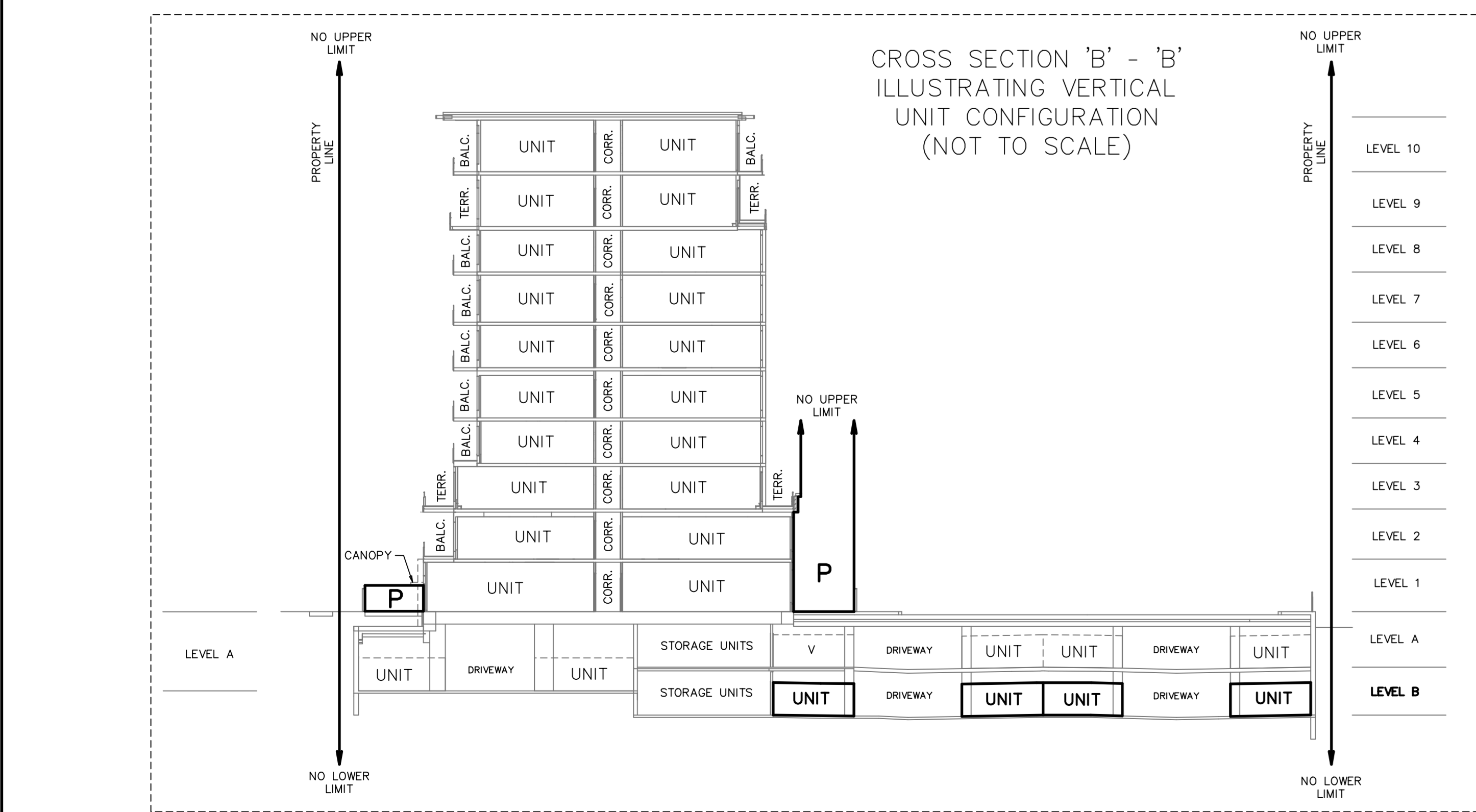
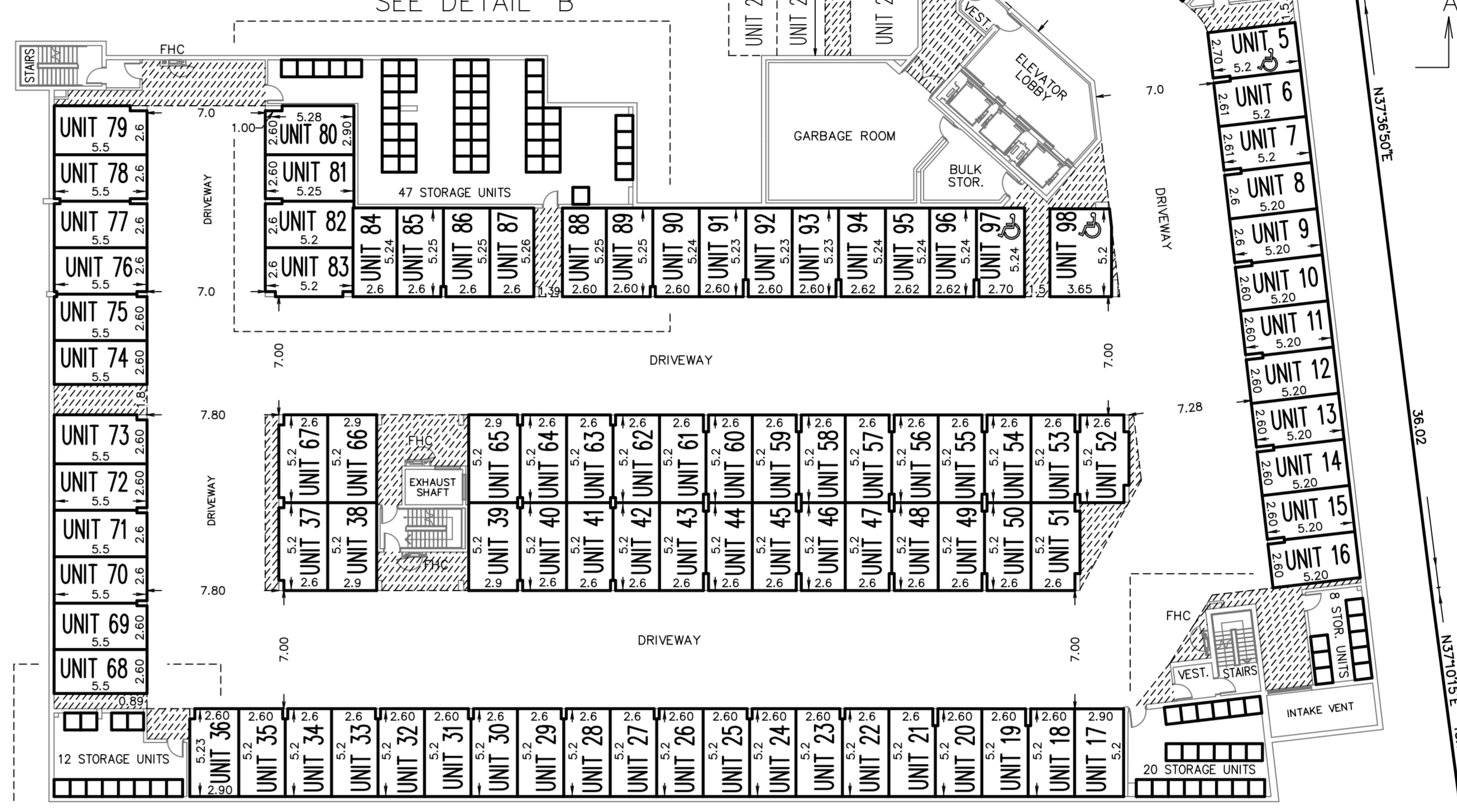
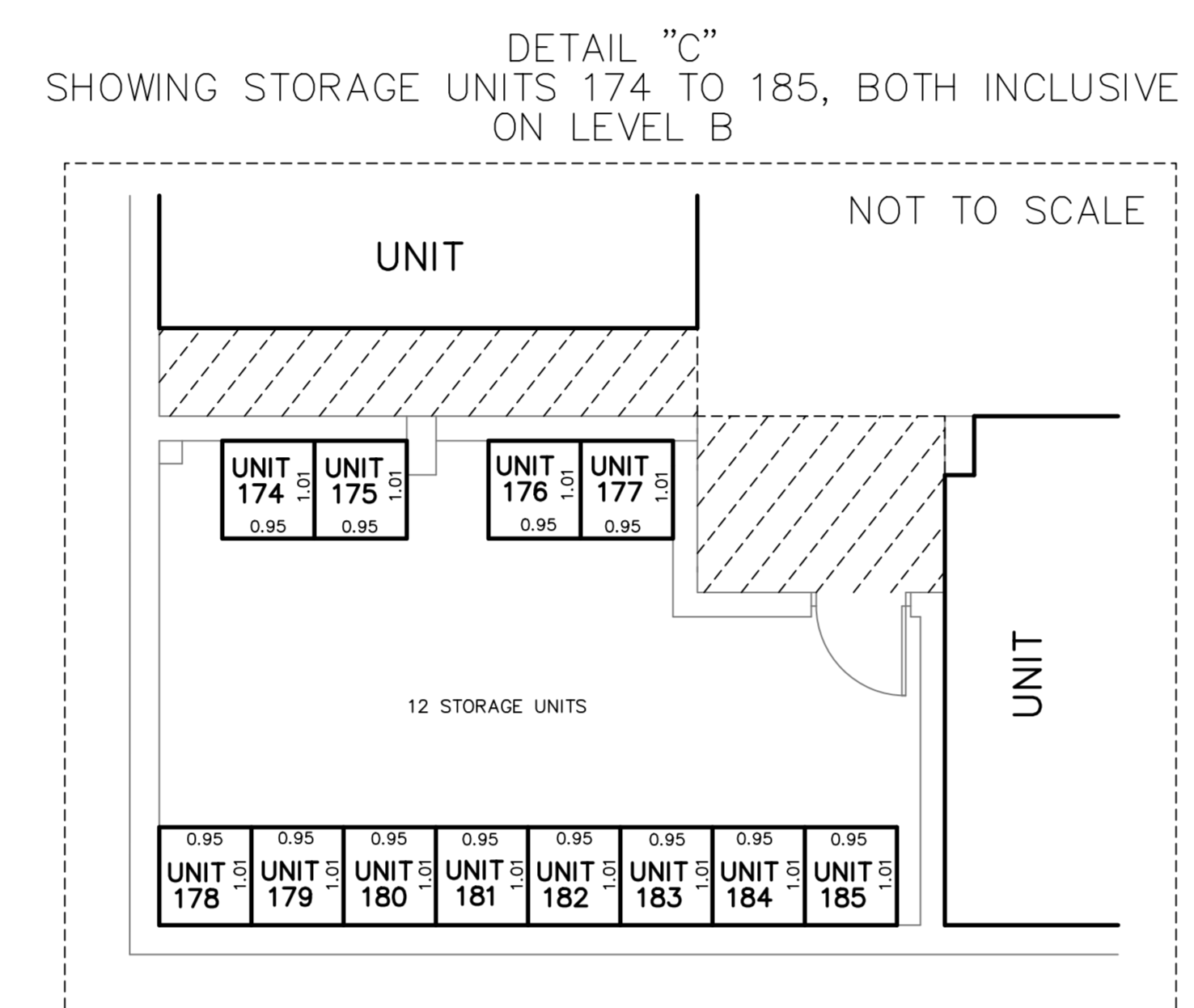
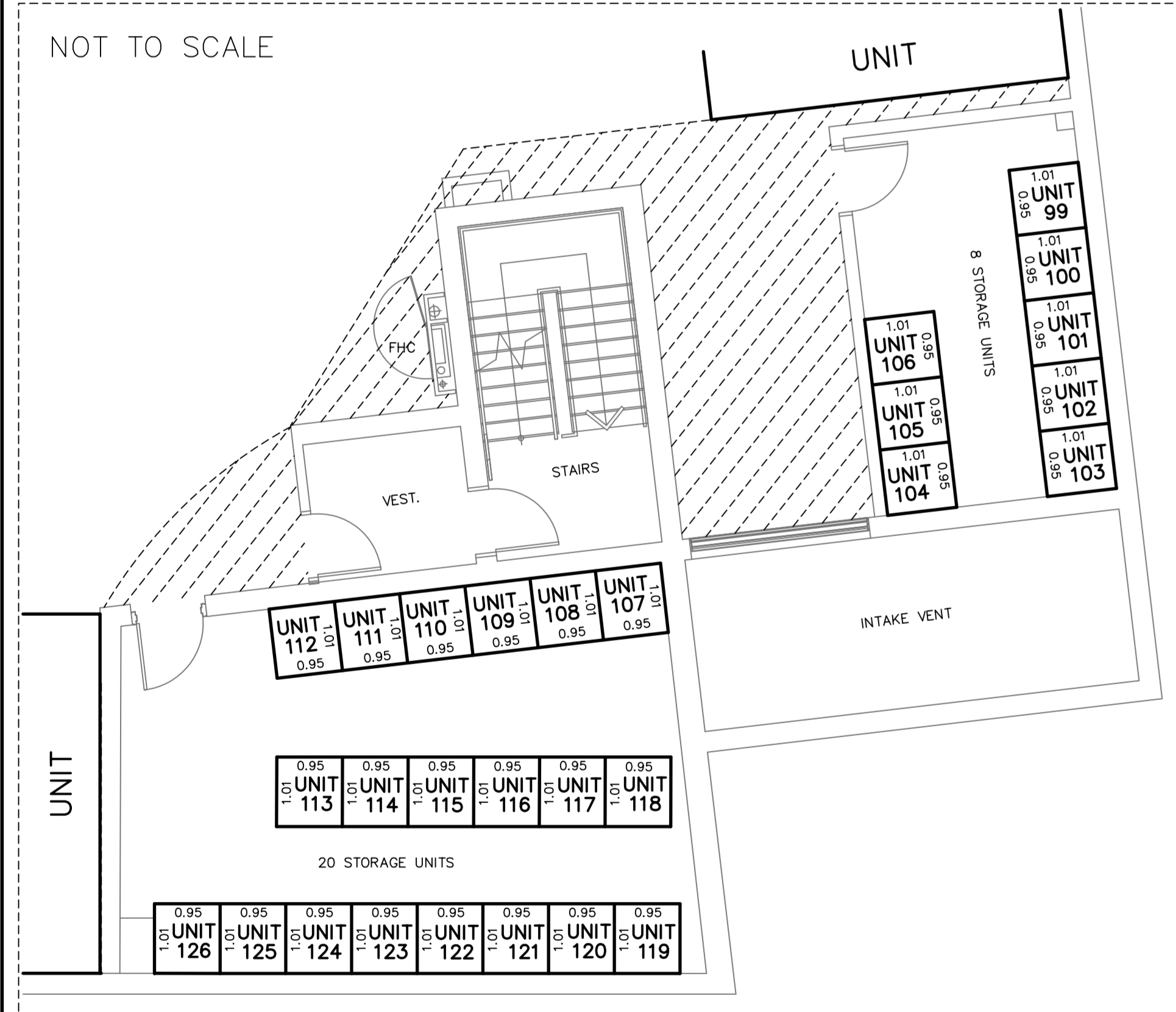


PART 1, PLAN 20R-21952  
LOT 19 CONCESSION 1  
NORTH OF DUNDAS STREET

PLAN VIEW SHOWING PARKING UNITS 1 TO 98, BOTH INCLUSIVE AND  
STORAGE UNITS 99 TO 185, BOTH INCLUSIVE ON LEVEL B



DETAIL "A"  
SHOWING STORAGE UNITS 99 TO 126, BOTH INCLUSIVE  
ON LEVEL B



DRAFT PLAN OF STANDARD CONDOMINIUM OF  
PART OF LOT 19  
CONCESSION 1  
NORTH OF DUNDAS STREET  
(GEOGRAPHIC TOWNSHIP OF TRAFALGAR)  
TOWN OF OAKVILLE  
REGIONAL MUNICIPALITY OF HALTON  
SCALE 1 : 250  
J.D. BARNES LIMITED  
© COPYRIGHT

METRIC DIMENSIONS SHOWN ON THIS PLAN ARE IN METRES AND CAN BE CONVERTED TO FEET BY DIVIDING BY 0.3048.

- ADDITIONAL INFORMATION REQUIRED UNDER SECTION 51(17) OF THE PLANNING ACT
- (3) EACH UNIT IS SINGLE RESIDENTIAL, THE OWNER OF WHICH HAS OUTFRONT OWNERSHIP. CERTAIN UNITS SHALL HAVE THE EXCLUSIVE USE OF PORTIONS OF THE COMMON ELEMENTS.
  - (4) MUNICIPAL WATER IS AVAILABLE ON ADJACENT STREETS
  - (5) CLAY LOAM
  - (6) MUNICIPAL STORM AND SANITARY SEWERS ARE AVAILABLE ON ADJACENT STREETS.
  - (7) ALL EASEMENTS AFFECTING THE SUBJECT SITE ARE SHOWN ON THE FACE OF THIS PLAN.

LEGEND  
V DENOTES VISITOR PARKING

OWNER'S CERTIFICATE  
I HEREBY CONSENT TO THE SUBMISSION OF THIS PLAN FOR APPROVAL.  
407 DUNDAS GP INC.

SURVEYOR'S CERTIFICATE  
I HEREBY CERTIFY THAT THE BOUNDARIES OF THE LAND TO BE DEVELOPED AS SHOWN ON THIS PLAN, AND THEIR RELATIONSHIP TO THE ADJACENT LANDS, ARE ACCURATELY AND CORRECTLY SHOWN.

FEBRUARY 10, 2023  
DATE  
R.S. QUERREN  
ON-CALL SURVEYOR

J.D. BARNES SURVEYING & MAPPING  
LAND INFORMATION SPECIALISTS  
40 WILHELMINA WAY, SUITE 1, MILTON, ON L7T 1C1  
T: 905.876.8200 F: 905.876.8201 WWW.JDBARNES.COM