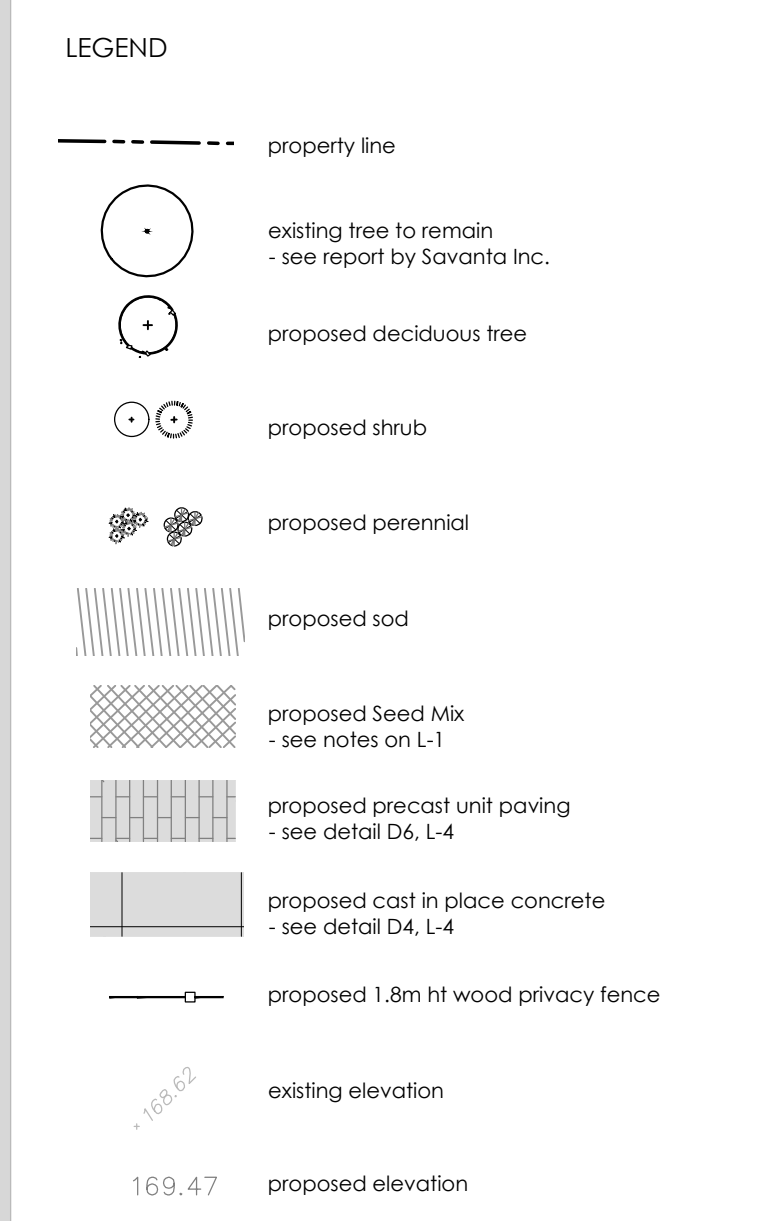
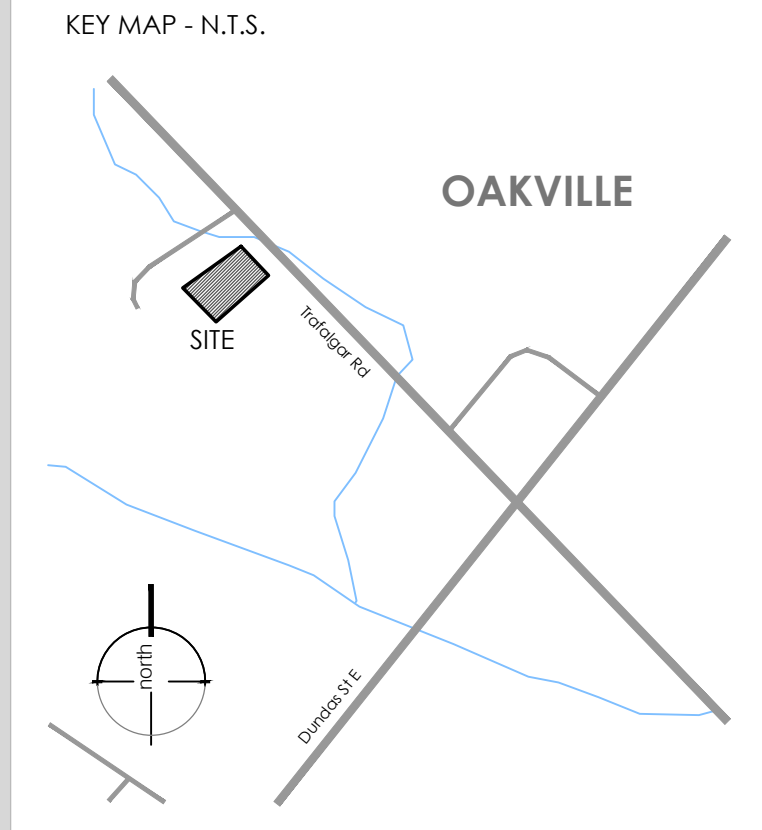


- ### LANDSCAPE NOTES:
- All work to be carried out in accordance with by-laws and codes having jurisdiction over site location.
 - Complete all work to the satisfaction of the Landscape Architect.
 - Report any changes, discrepancies or substitutions to the Landscape Architect for review. Obtain approval from the Landscape Architect before proceeding. It is the contractor's responsibility to determine existing service locations.
 - All plant material locations to be staked or marked out and approved by Landscape Architect prior to installation.
 - Supply all plant material in accordance with the Canadian Standards for Nursery Stock (8th ed.).
 - Install plant material according to details shown.
 - Supply and place mulch in accordance with Canadian Landscape Standard (Section 10, Mulching). Disturbed soil areas around trees and shrubs are to be covered with shredded conifer bark mulch such as Cedar Bark Mulch by All Treat Farms or Classic Cedar Mulch by Gro-Bark, or approved equivalent. Alternative mulches must be approved by the Landscape Architect.
 - Contractor to utilize layout dimensions where provided.
 - Provide planting bed area as noted on the drawing or to accommodate mature size of plant material.
 - All support systems must be removed by the contractor at time of final acceptance. No extras will be paid to complete this work.
 - Supply and place topsoil in accordance with Canadian Landscape Standard (Section 4, Grading & Drainage) and Section 6, Growing Medium) to a minimum depth of 150mm unless otherwise specified.
 - Supply and place sod in accordance with Canadian Landscape Standard (Section 7, Lawns & Grass and Section 8, Turfgrass Sod) unless otherwise specified.
 - Supply and place seed in accordance with Canadian Landscape Standard (Section 4, Grading & Drainage) and Section 6, Growing Medium) unless otherwise specified. All silt or greater slopes to be seeded with sod. Contractor to provide necessary erosion control protection as required to ensure soil stabilization and proper seed germination.
 - All dimensions in meters unless otherwise noted.
 - If discrepancies arise between plant material count shown on drawing and plant list, the drawing shall be considered correct.
 - Contractor to provide minimum one (1) year warranty (including trees on municipal property) from date accepted on all work unless otherwise specified.
 - Any site plan or grading and servicing shown is for information only. Refer to approved drawings.
 - Not for construction unless stamped, signed and dated by Landscape Architect.
 - Drawings not to be reproduced without written consent from Landscape Architect.
 - Approval of landscape plan to be obtained from municipality.
 - All plant material to be planted a minimum of 1.0m from any swales or ditches.
 - For grading and servicing information refer to the consulting Engineer's drawings.
 - For lighting information and power distribution refer to the electrical consultant's drawings.

- ### TERRASED NOTES:
- Areas to be seeded with naturalization mix shall receive an application of naturalization seed at the rate of 25-30 kg/hectare or 2 kg/100m² for spot applications, in the following mixture:
- | Species | Percentage |
|---|------------|
| Black Eyed Susan (<i>Rudbeckia hirta</i>) | 5% |
| Blue Vervain (<i>Verbena hastata</i>) | 5% |
| Canada Anemone (<i>Anemone canadensis</i>) | 15% |
| Canada Goldenrod (<i>Solidago canadensis</i>) | 4% |
| Little Bluestem (<i>Schizachyrium scoparium</i>) | 10% |
| Common Milkweed (<i>Asclepias syriaca</i>) | 5% |
| Four Bluegrass (<i>Poa polystris</i>) | 25% |
| Meadow/Open Field Sedge (<i>Carex granularis</i>) | 20% |
| New England Aster (<i>Symphoricarpos angustifolius</i>) | 1% |
| Path Rush (<i>Juncus tenuis</i>) | 10% |
| Purple Stemmed Aster (<i>Symphoricarpos purpureus</i>) | 1% |
| Virgins Bower (<i>Clematis virginiana</i>) | 4% |
| Wild Bergamot (<i>Monarda fistulosa</i>) | 4% |
- *apply with Annual Oats (*Avena sativa*) nursecrop at 22kg/hectare.



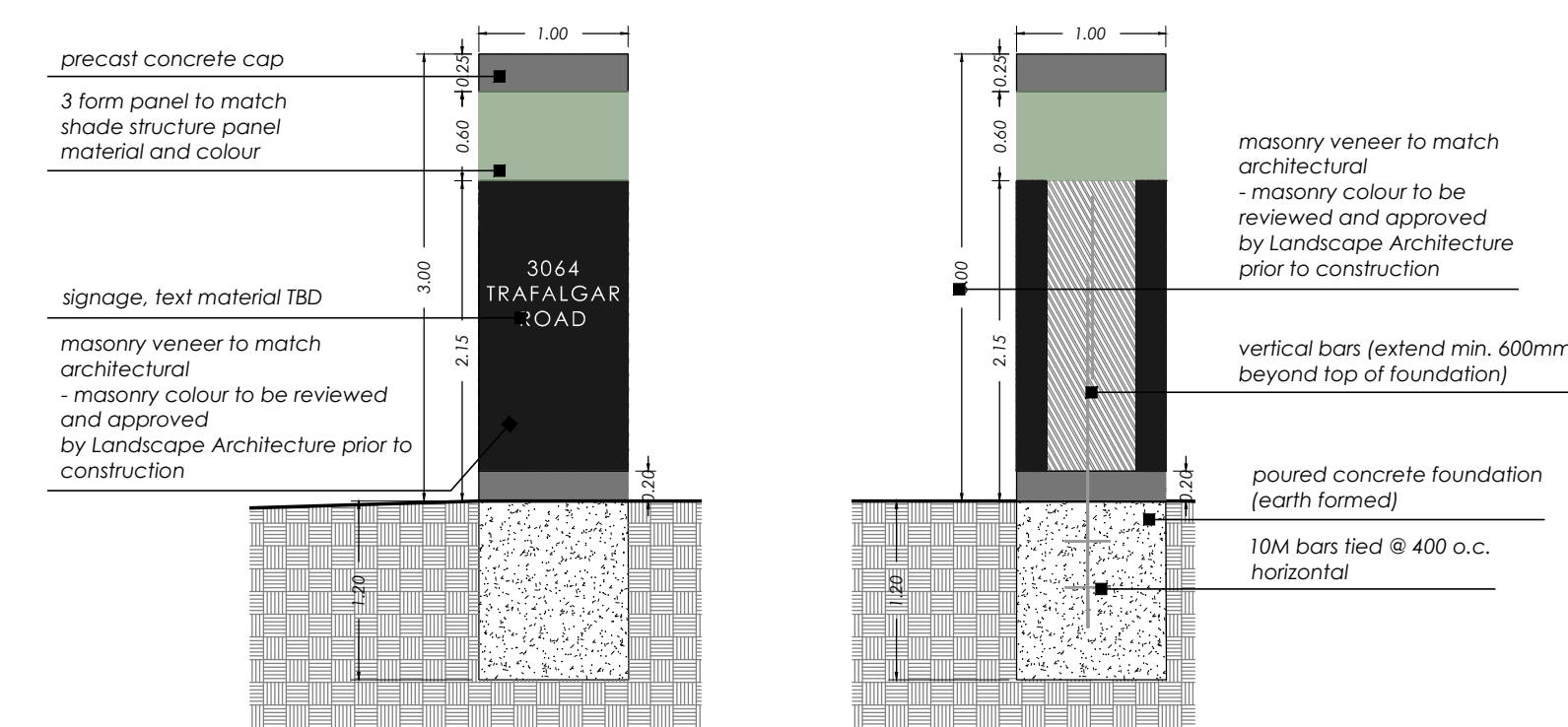
REVISIONS/ SUBMISSIONS

#	DATE	DESCRIPTION
2	2019-08-21	Issued for client review
3	2020-07-22	Issued for review & coordination
4	2020-09-03	Issued for review
5	2020-09-17	Issued for coordination
6	2021-01-11	Issued for review & coordination
7	2021-05-14	Issued for review & coordination
8	2021-06-30	Issued for submission



PLANT SCHEDULE OVERALL

TREES	BOTANICAL NAME	COMMON NAME	SIZE	COND.	MATURE HT. (M)	MATURE SPR. (M)	O.C. (M)	REMARKS
4	<i>Acer rubrum</i>	Red Maple	50mm Cal.	W.B.	15.0	12.0	As Shown	Native to Ontario
2	<i>Acer saccharum</i>	Sugar Maple	50mm Cal.	W.B.	30.0	18.0	As Shown	Native to Ontario
4	<i>Betula papyrifera</i>	Paper Birch	50mm Cal.	W.B.	15.0	11.0	As Shown	Native to Ontario
5	<i>Carpinus caroliniana</i>	American Hornbeam	50mm Cal.	W.B.	9.0	10.0	As Shown	Native to Ontario
4	<i>Cercis canadensis</i>	Eastern Redbud	50mm Cal.	W.B.	9.0	7.0	As Shown	Native to Ontario
22	<i>Picea pungens</i>	Colorado Spruce	200cm Ht.	W.B.	16.0	5.0	As Shown	
16	<i>Prunus pensylvanica</i>	Pin Cherry	100cm Ht.	#1 cont.	10.0	4.0	-	NATIVE
1	<i>Quercus alba</i>	White Oak	50mm Cal.	W.B.	18.0	18.0	As Shown	Native to Ontario
4	<i>Quercus robur</i>	English Oak	50mm Cal.	W.B.	18.0	15.0	As Shown	
SHRUBS	BOTANICAL NAME	COMMON NAME	SIZE	COND.	MATURE HT. (M)	MATURE SPR. (M)	O.C. (M)	REMARKS
18	<i>Berberis thunbergii</i>	Royal Cloak Barberry	40cm	#3 cont.	1.0	0.90		
34	<i>Comus sericea</i>	Arctic Fire Dogwood	50cm	#3 cont.	1.0	1.0	0.80	
16	<i>Juniperus sabinia</i>	Savin Juniper	40cm	#3 cont.	1.0	1.25	1.0	
34	<i>Taxus x media</i>	Hicksii	40cm	#3 cont.	2.75	1.5	1.25	
GRASSES	BOTANICAL NAME	COMMON NAME	SIZE	COND.	MATURE HT. (M)	MATURE SPR. (M)	O.C. (M)	REMARKS
24	<i>Calamagrostis x acutiflora</i>	Karl Foerster Feather Reed Grass	---	#1 cont.	1.25	0.60	0.50	
121	<i>Pennisetum alopecuroides</i>	Hamel Fountain Grass	---	#1 cont.	0.70	0.50	0.40	
PERENNIALS	BOTANICAL NAME	COMMON NAME	SIZE	COND.	MATURE HT. (M)	MATURE SPR. (M)	O.C. (M)	REMARKS
32	<i>Hemerocallis x Stella D'Oro</i>	Stella D'Oro Daylily	---	#1 cont.	0.30	0.50	0.40	
24	<i>Perovskia atriplicifolia</i>	Russian Sage	---	#1 cont.	0.90	0.80	0.70	
14	<i>Sedum spectabile</i>	Autumn Fire Stonecrop	---	#1 cont.	0.40	0.50	0.40	
GROUND COVERS	BOTANICAL NAME	COMMON NAME	SIZE	COND.	MATURE HT. (M)	MATURE SPR. (M)	O.C. (M)	REMARKS
45	<i>Cotoneaster dammeri</i>	Coral Beauty Cotoneaster	30cm	#3 cont.	0.40	1.5	2.0	
33	<i>Euonymus fortunei</i>	Purpleleaf Wintercreeper	40cm	#2 cont.	0.30	1.25	0.80	



NOTES

- Contractor to provide shop drawing prior to construction.
- Do concrete materials and methods of concrete construction in accordance with OPSS 351.
- Contractor to verify accuracy of concrete details and reinforcement prior to installation.
- Provide following materials:
 - cement: OPSS 905 and 1350
 - aggregates for concrete: OPSS 905 and 1350
 - reinforcing steel if detailed: OPSS 905 and 1350
 - wire ties if detailed: plain, cold drawn annealed steel wire.
 - form stripping agent: colorless mineral oil, free of kerosene.
 - litter bonding agent: Sika bond, Sikomix Limited, or approved equal.
 - form lumber and plywood: clean, free of loose knots, splits and with repairs made smoothly and securely.
 - joint fillers: preformed, non-expanding, resilient bituminous type.
 - admixtures: to be used only when approved by engineer.
 - aggregates for base: granular 'a' to OPSS form 1010.
- water: water used in mixing or curing shall be reasonably clean and free of oil, salt, acid, alkali, sugar, vegetable matter or other substance injurious to the finished project and shall meet the requirement of OPSS.
- Concrete mix to provide compressive strength of 32mpa at 28 days, entrained air of 6% to 1% and slump at point of discharge of 60mm for curbs and footings.
- Four concrete in favourable weather conditions.
- Apply surface finish as detailed.
- Provide expansion and contraction joints as detailed.
- Repair defective area while concrete is still plastic, or remove defective work and replace with new concrete.
- Concrete areas will not be accepted if:
 - fails to meet requirements of this specification
 - contains excessive honeycombing or embedded debris
 - 28 days average strength in any defined area is less than 95% of specified minimum strength.
 - surface irregularities.
 - damaged or chipped.
 - poor workmanship.
- It is the contractor's responsibility to maintain and protect concrete areas until time of final acceptance.

Entry Feature
SCALE: 1:50

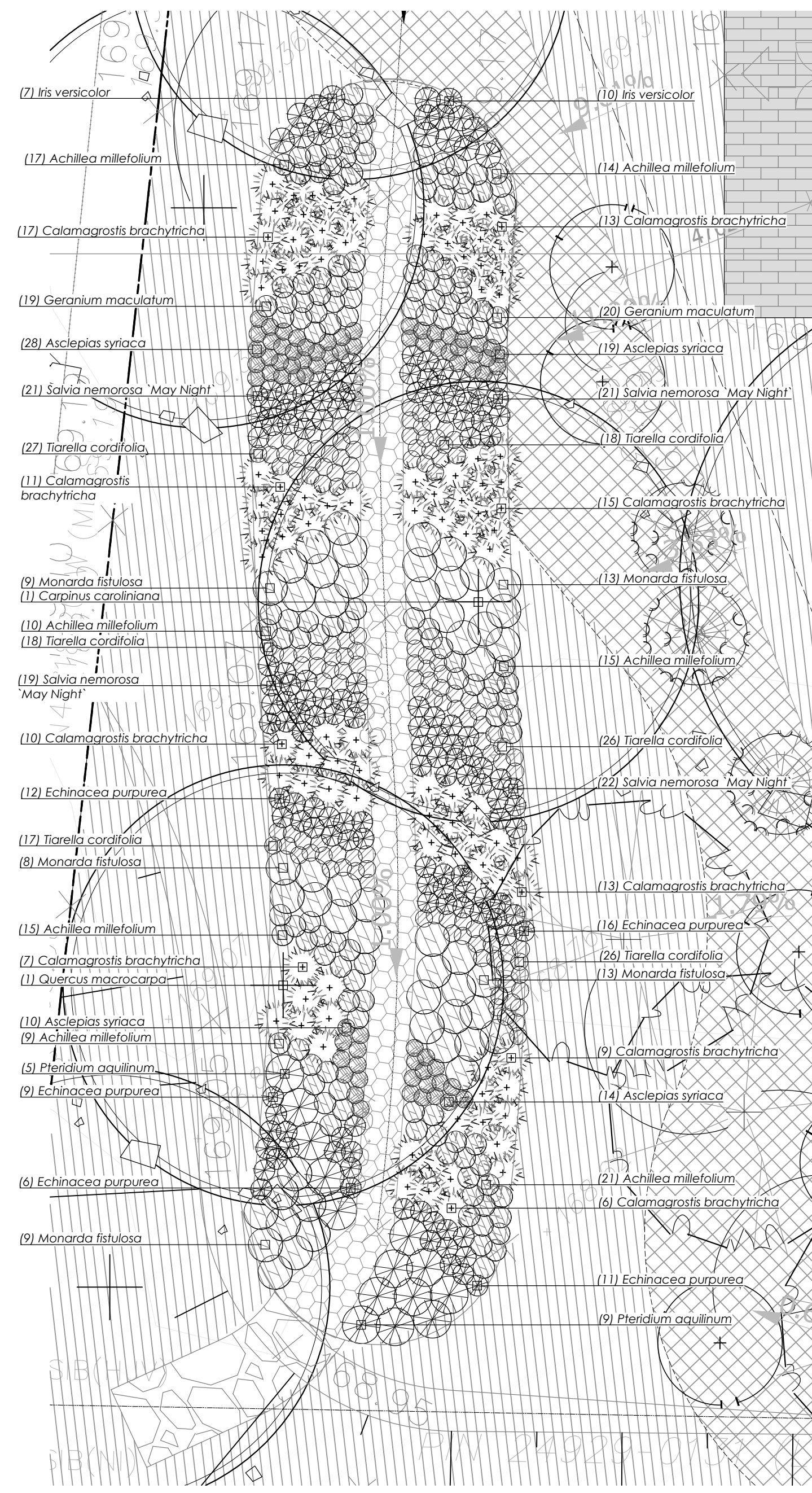
LANDSCAPE NOTES:

- All work to be carried out in accordance with by-laws and codes having jurisdiction over site location.
- Complete all work to the satisfaction of the Landscape Architect.
- Report any changes, discrepancies or substitutions to the Landscape Architect for review. Obtain approval from the Landscape Architect before proceeding.
- It is the contractor's responsibility to determine existing service locations.
- Exact locations of plant material will be determined by placement of site services such as hydro vaults, meters, utilities roof rain water leaders, driveways, light standards, etc.
- All plant material locations to be staked or marked out and approved by Landscape Architect prior to installation.
- Supply all plant material in accordance with the Canadian Standards for Nursery Stock (CSN).
- Install plant material according to details shown.
- Supply and place mulch in accordance with Canadian Landscape Standard (Section 10, Mulching). Disturbed soil areas around trees and shrubs are to be covered with shredded conifer bark mulch such as 'Cedar Bark Mulch' by All Treat Farms or 'Classic Cedar Mulch' by Gro-Bark, or approved equivalent. Alternative mulches must be approved by the Landscape Architect.
- Contractor to utilize layout dimensions where provided to accommodate mature size of plant material.
- Provide planting bed area as noted on the drawing or to accommodate mature size of plant material.
- All support systems must be removed by the contractor at time of final acceptance. No extras will be paid to complete this work.
- Supply and place topsoil in accordance with Canadian Landscape Standard (Section 4, Grading & Drainage and Section 6, Growing Medium) to a minimum depth of 150mm unless otherwise specified.
- Supply and place sod in accordance with Canadian Landscape Standard (Section 7, Lawns & Grass and Section 8, Turfgrass Sod) unless otherwise specified.
- Supply and place seed in accordance with Canadian Landscape Standard (Section 4, Grading & Drainage and Section 6, Growing Medium) unless otherwise specified. All S1 or greater slopes to be seeded with topsoil. Contractor to provide necessary erosion control protection as required to ensure soil stabilization and proper seed germination.
- All dimensions in meters unless otherwise noted.

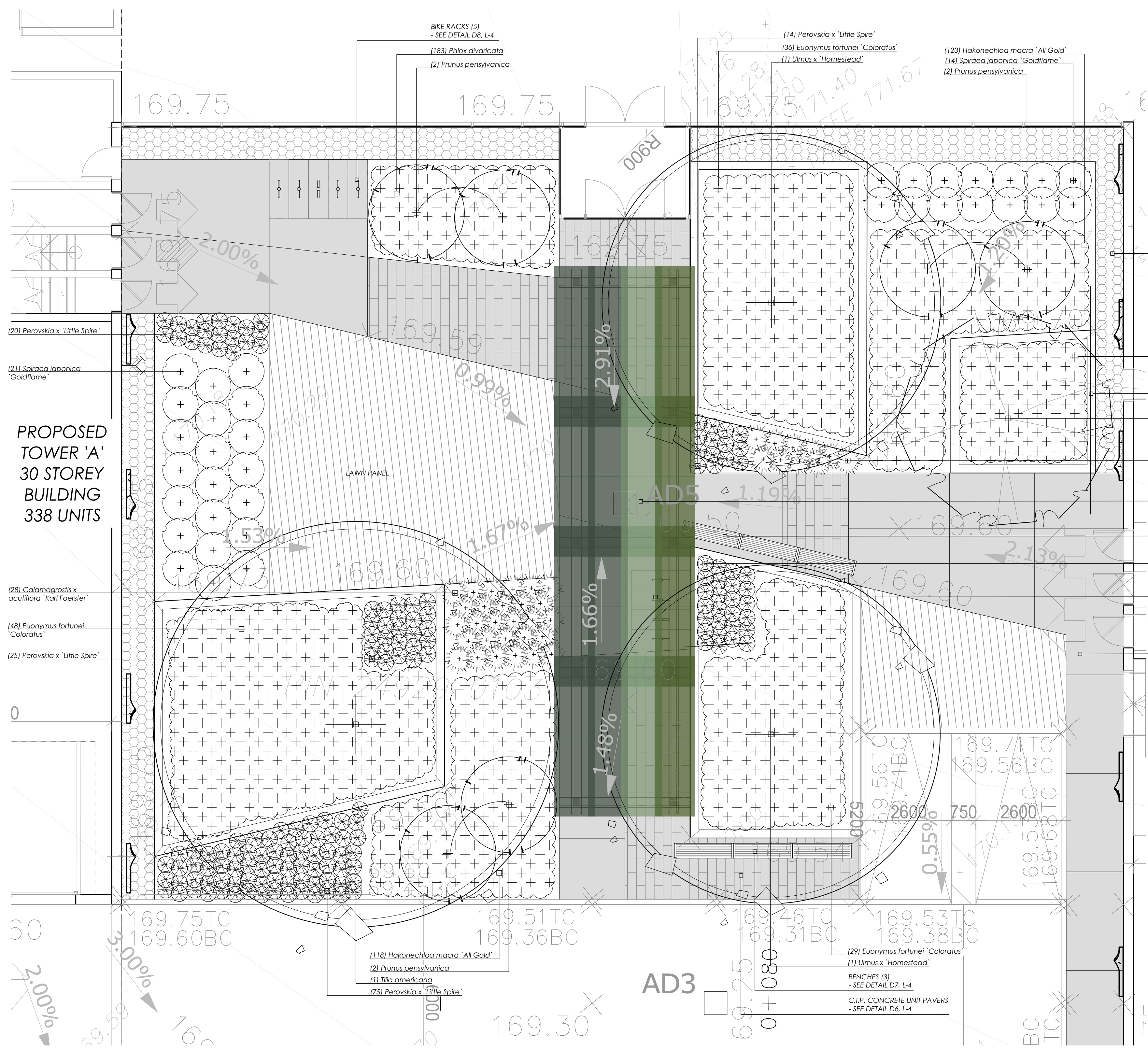
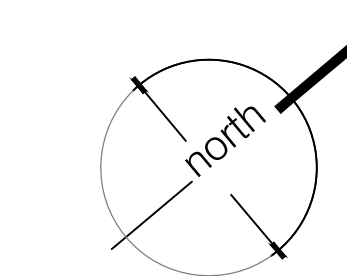
- If discrepancies arise between plant material count shown on drawing and plant list, the drawing shall be considered correct.
- Contractor to provide minimum one (1) year warranty (including trees on municipal property) from date accepted on all work unless otherwise specified.
- Any site plan or grading and servicing shown is for information only. Refer to approved drawings.
- Not for construction unless stamped, signed and dated by Landscape Architect.
- Drawings not to be reproduced without written consent from Landscape Architect.
- Approval of landscape plan to be obtained from municipality.
- All plant material to be planted a minimum of 1.0m from any swales or ditches.
- For grading and servicing information refer to the consulting Engineer's drawings.
- For lighting information and power distribution refer to the electrical consultant's drawings.

PLANT SCHEDULE BIO-SWALE

TREES	BOTANICAL NAME	COMMON NAME	SIZE	COND.	MATURE HT. (M)	MATURE SPR. (M)	O.C. (M)	REMARKS
1	<i>Quercus macrocarpa</i>	Burr Oak	50mm Cal.	W.B.	20.0	13.0	As Shown	Native to Ontario
GRASSES	BOTANICAL NAME	COMMON NAME	SIZE	COND.	MATURE HT. (M)	MATURE SPR. (M)	O.C. (M)	REMARKS
101	<i>Calamagrostis brachytricha</i>	Autumn Feather Reed Grass	#1 cont.		1.0	0.70		
PERENNIALS	BOTANICAL NAME	COMMON NAME	SIZE	COND.	MATURE HT. (M)	MATURE SPR. (M)	O.C. (M)	REMARKS
101	<i>Achillea millefolium</i>	Common Yarrow	#1 cont.		0.50	0.40		Native to Ontario
71	<i>Asclepias syriaca</i>	Common Milkweed	30cm	#1 cont.	1.0	0.40	0.20	
54	<i>Echinacea purpurea</i>	Coneflower	--	#1 cont.	0.90	0.50	0.40	Native to Ontario
39	<i>Geranium maculatum</i>	Wild Geranium	--	#1 cont.	0.40	0.50	0.40	Native to Ontario
17	<i>Iris versicolor</i>	Blue Flag Iris	--	#1 cont.	0.70	0.60	0.50	Native to Ontario
52	<i>Monarda fistulosa</i>	Wild Bergamot	--	#1 cont.	0.90	0.80	0.70	Native to Ontario
14	<i>Pteridium aquilinum</i>	Western Brackenfern	30cm	#1 cont.	0.80	0.90	0.70	
83	<i>Salvia nemorosa 'May Night'</i>	May Night Meadow Sage	--	#1 cont.	0.40	0.50	0.40	
132	<i>Tiarella cordifolia</i>	Foamflower	--	#1 cont.	0.10	0.40	0.30	Native to Ontario



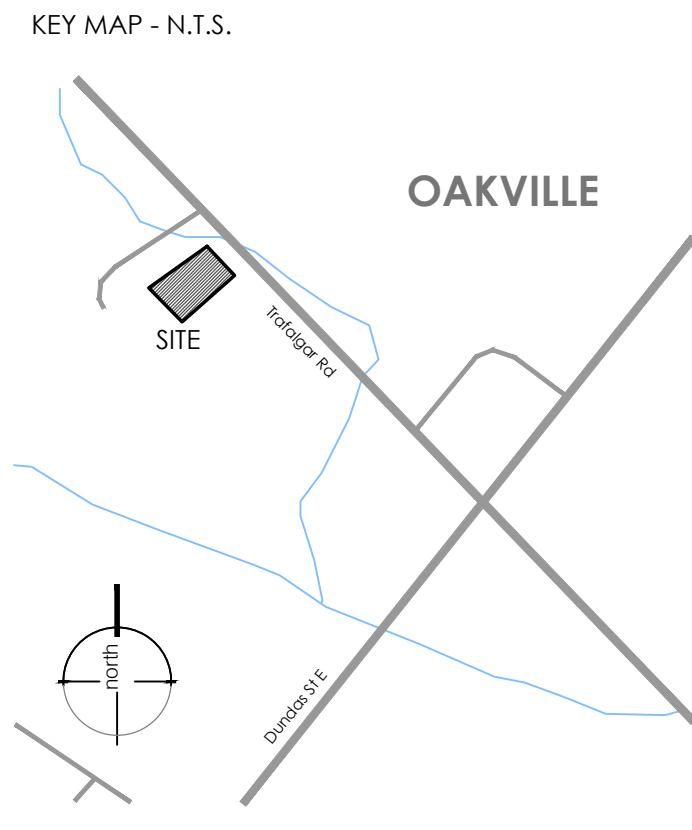
Bio-Swale Enlargement
SCALE: 1:100



Enlargement 'A'
SCALE: 1:75

PLANT SCHEDULE ENLARGEMENT 'A'

TREES	BOTANICAL NAME	COMMON NAME	SIZE	COND.	MATURE HT. (M)	MATURE SPR. (M)	O.C. (M)	REMARKS
1	<i>Cercis canadensis</i>	Eastern Redbud	50mm Cal.	W.B.	9.0	7.0	As Shown	Native to Ontario
6	<i>Prunus pensylvanica</i>	Pin Cherry	100cm Ht.	#1 cont.	10.0	4.0		NATIVE
1	<i>Tilia americana</i>	American Linden	50mm Cal.	W.B.	20.0	13.0	As Shown	Native to Ontario
2	<i>Ulmus x 'Homestead'</i>	Homestead Elm	50mm Cal.	W.B.	16.0	11.0	As Shown	
SHRUBS	BOTANICAL NAME	COMMON NAME	SIZE	COND.	MATURE HT. (M)	MATURE SPR. (M)	O.C. (M)	REMARKS
35	<i>Spiraea japonica 'Goldflame'</i>	Goldflame Spiraea	40cm	#3 cont.	0.90	0.90		
GRASSES	BOTANICAL NAME	COMMON NAME	SIZE	COND.	MATURE HT. (M)	MATURE SPR. (M)	O.C. (M)	REMARKS
38	<i>Calamagrostis x acutiflora 'Karl Foerster'</i>	Karl Foerster Feather Reed Grass	--	#1 cont.	1.25	0.60	0.50	
PERENNIALS	BOTANICAL NAME	COMMON NAME	SIZE	COND.	MATURE HT. (M)	MATURE SPR. (M)	O.C. (M)	REMARKS
160	<i>Perovskia x 'Little Spire'</i>	Little Spire Russian Sage	#1 cont.		0.60	0.50	0.40	
GROUND COVERS	BOTANICAL NAME	COMMON NAME	SIZE	COND.	MATURE HT. (M)	MATURE SPR. (M)	O.C. (M)	REMARKS
127	<i>Euonymus fortunei 'Coloratus'</i>	Purpleleaf Wintercreeper	40cm	#2 cont.	0.30	1.25	0.80	
241	<i>Hakonechloa macroa 'All Gold'</i>	Golden Japanese Forest Grass	--	#1 cont.	0.30	0.50	0.40	
183	<i>Phlox divaricata</i>	Woodland Phlox	--	#1 cont.	0.20	0.30	0.20	Native to Ontario



- LEGEND
- property line
 - existing tree to remain - see report by Savanta Inc.
 - proposed deciduous tree
 - proposed ornamental tree
 - proposed shrub
 - proposed perennials and grasses
 - proposed sod
 - proposed Seed Mix - see notes on L-1
 - proposed precast unit paving - see detail D6, L-4
 - proposed cast in place concrete - see detail D4, L-4

REVISIONS / SUBMISSIONS

#	DATE	DESCRIPTION
1	2019-08-08	Issued for submission
2	2019-08-21	Issued for client review
3	2020-07-22	Issued for review & coordination
4	2020-09-03	Issued for submission
5	2020-09-17	Issued for coordination
6	2021-01-11	Issued for review & coordination
7	2021-05-14	Issued for review & coordination
8	2021-06-30	Issued for submission



CLIENT
Distrikt
MUNICIPALITY
Town of Oakville

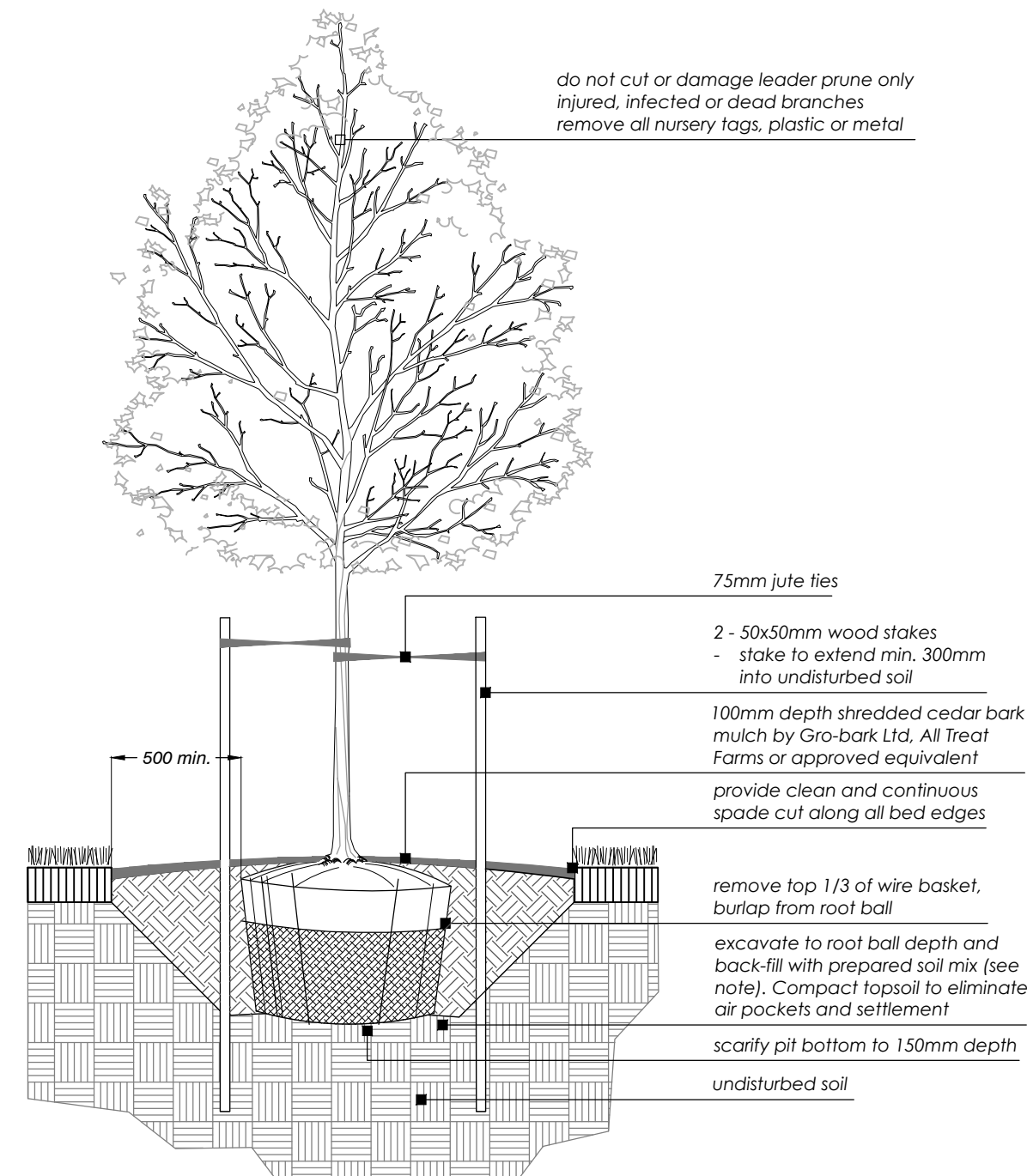
PROJECT
Trafalgar
3064 Trafalgar Road

MUNICIPAL FILE NUMBER

SHEET
Landscape Plan -
Enlargement 'A' L-2

adesso design inc.
landscape architecture

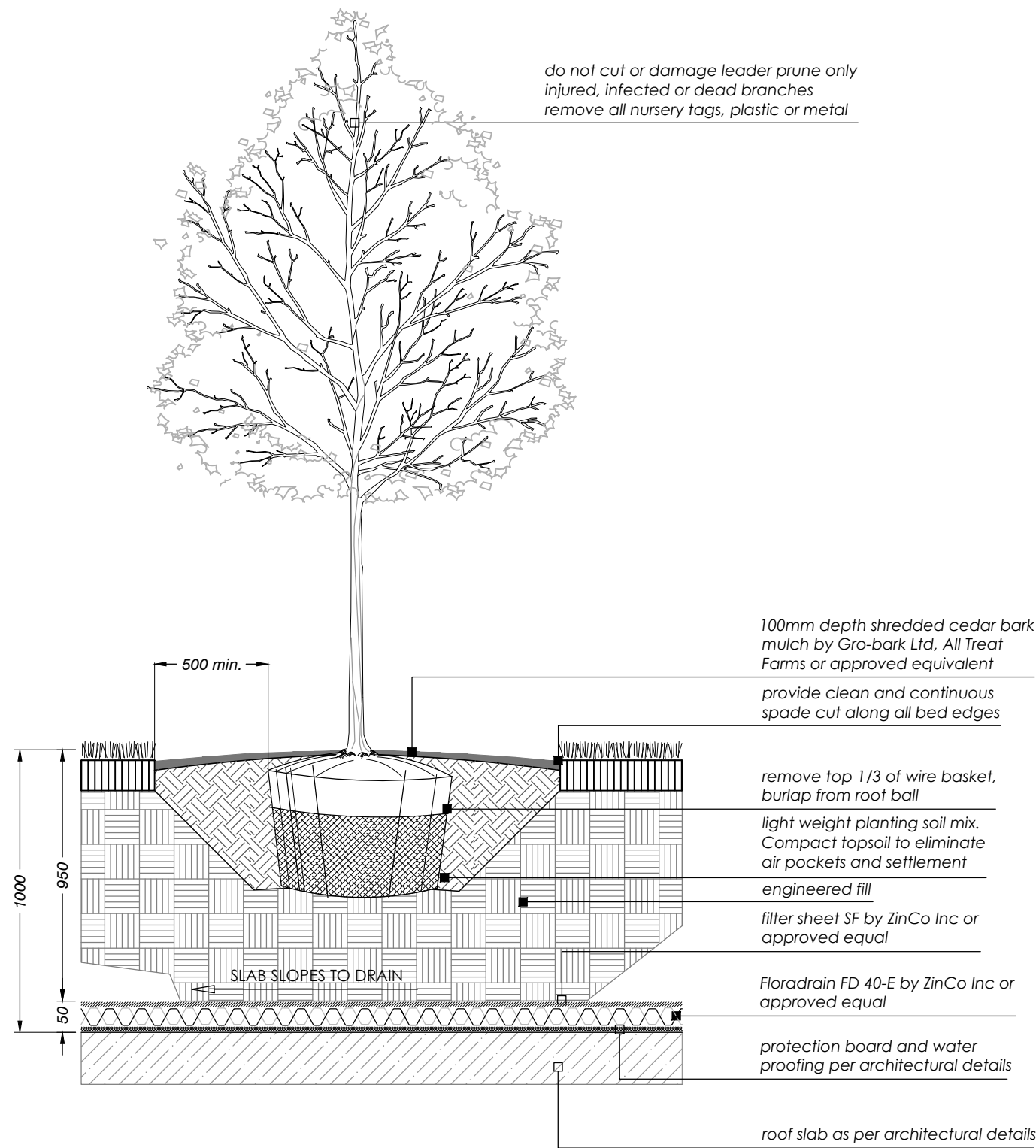
218 Locke Street South, 2nd Floor
Hamilton, ON L8P 4B4
t. 905.526.8876
www.adessodesigninc.ca



Balled & Burlapped/ Wire Basket Deciduous Tree

SCALE: NTS

1 L-4



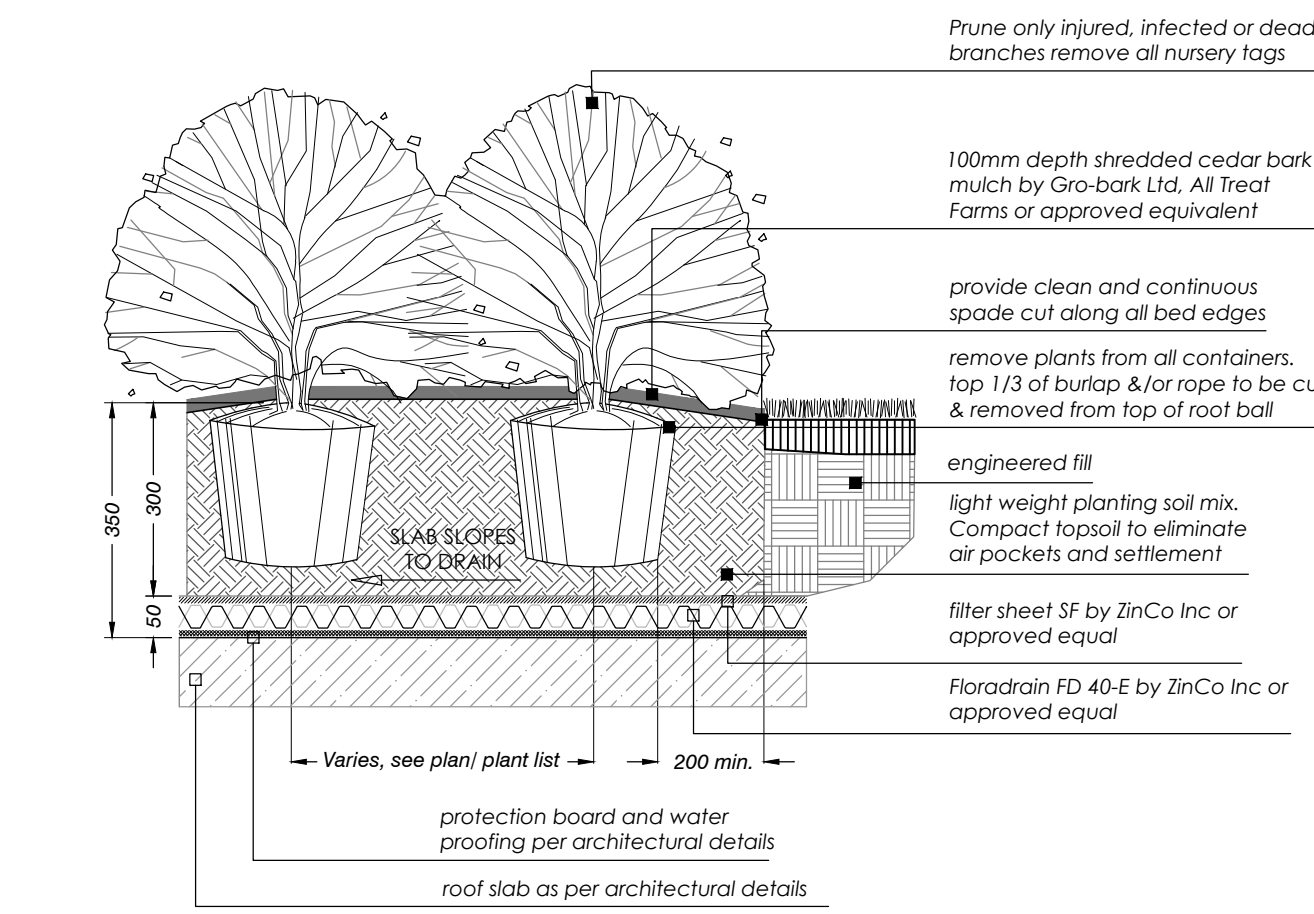
NOTES:

- Detail to be reviewed and approved by structural engineer prior to construction. Refer to structural engineering drawings for underground garage wall and roof slab details.
- Staking of trees will not occur on roof top.

Balled & Burlapped/ Wire Basket Deciduous Tree (on slab)

SCALE: NTS

2 L-4



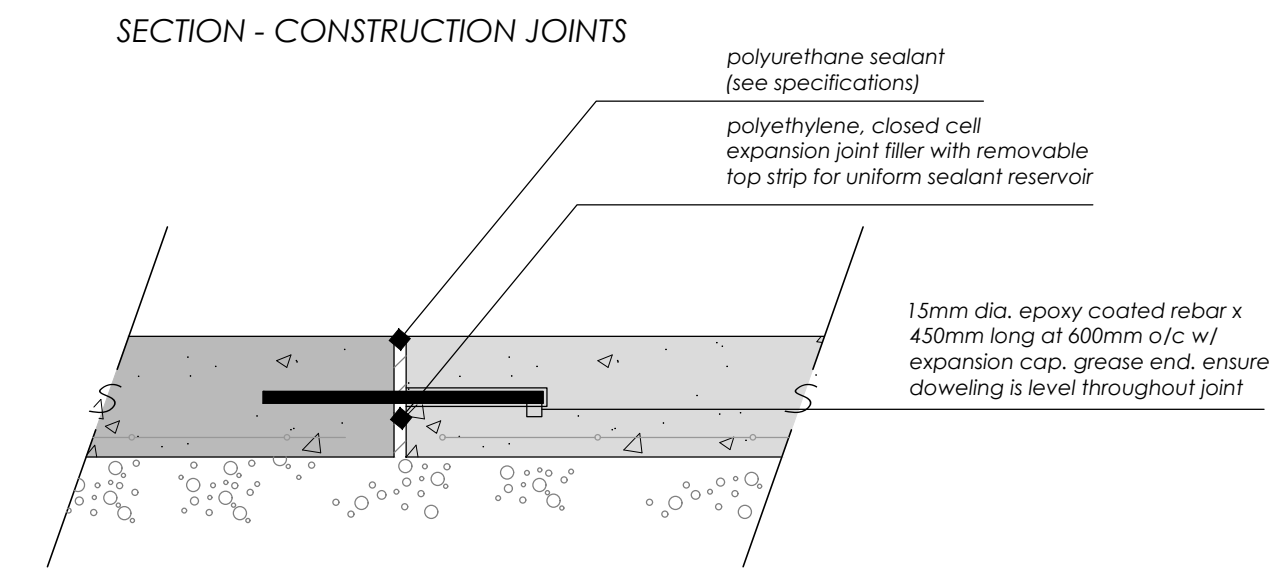
NOTES:

- Detail to be reviewed and approved by structural engineer prior to construction. Refer to structural engineering drawings for underground garage wall and roof slab details.
- Staking of shrubs will not occur on roof top.

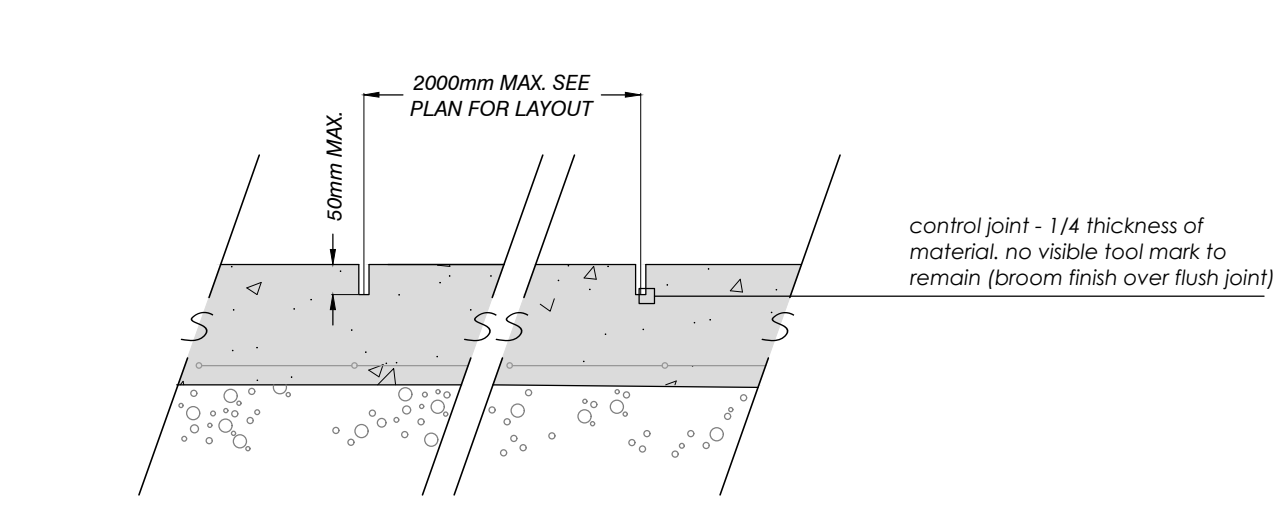
Container Grown Shrub (on slab)

SCALE: NTS

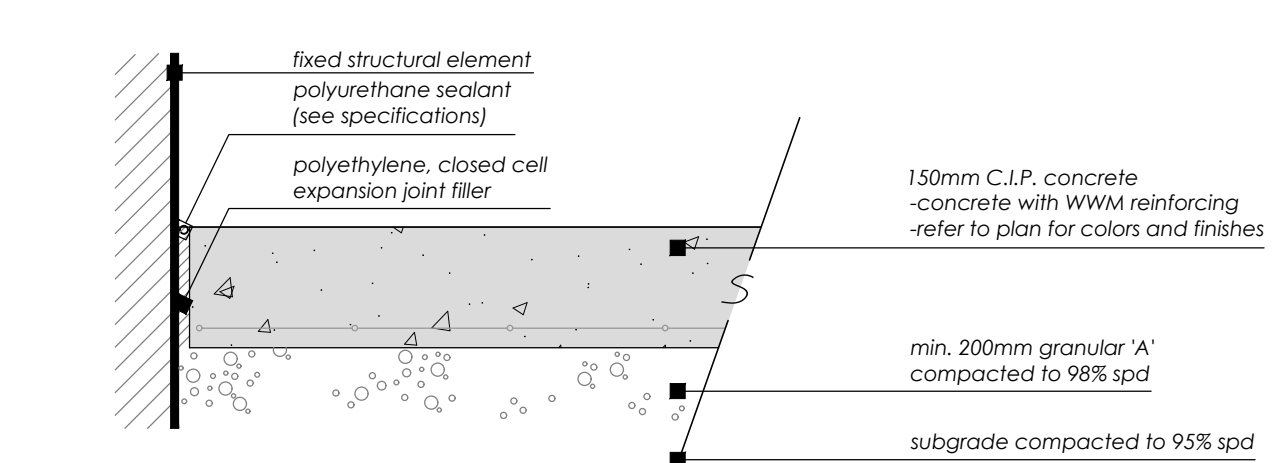
3 L-4



SECTION - SAWCUT CONTROL JOINTS



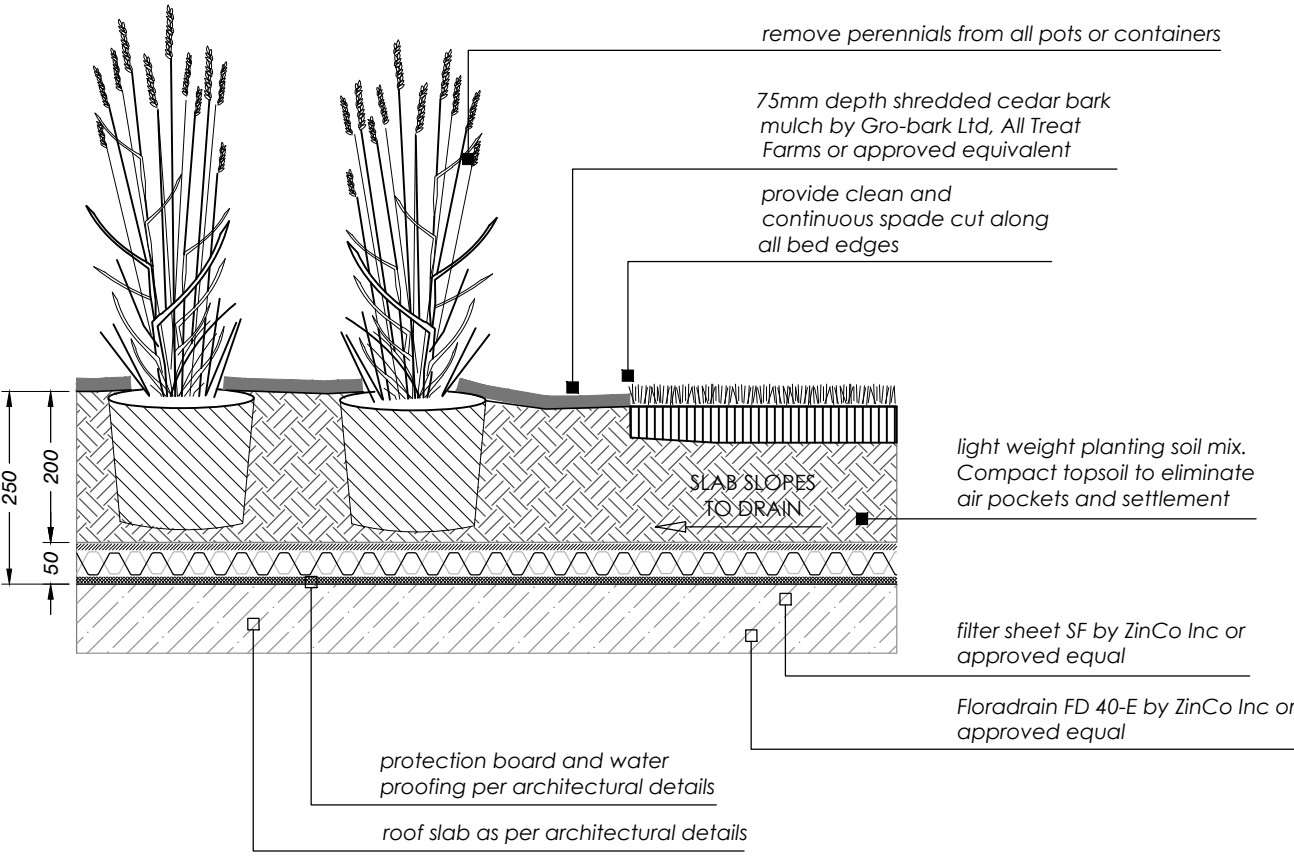
SECTION - ISOLATION JOINT AT FIXED ELEMENTS



Cast-in-place Concrete

SCALE: NTS

4 L-4



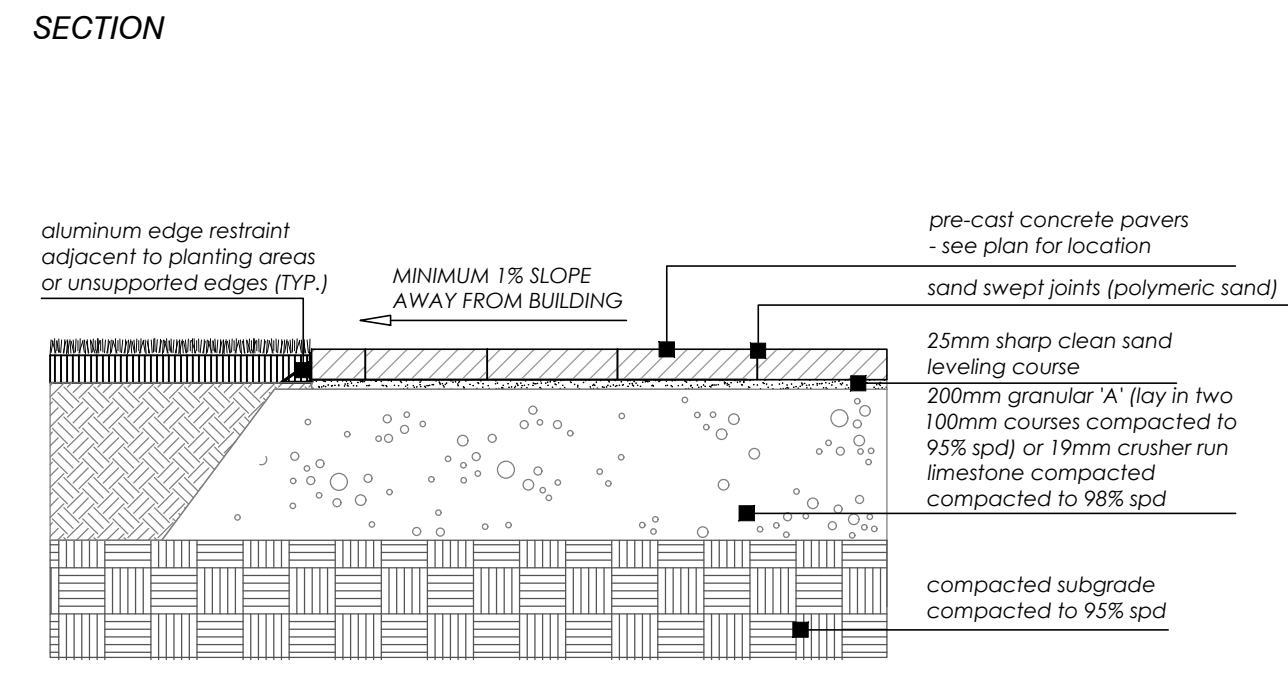
NOTES:

- Detail to be reviewed and approved by structural engineer prior to construction. Refer to structural engineering drawings for underground garage wall and roof slab details.

Container Grown Perennial (on slab)

SCALE: NTS

5 L-4



NOTES:

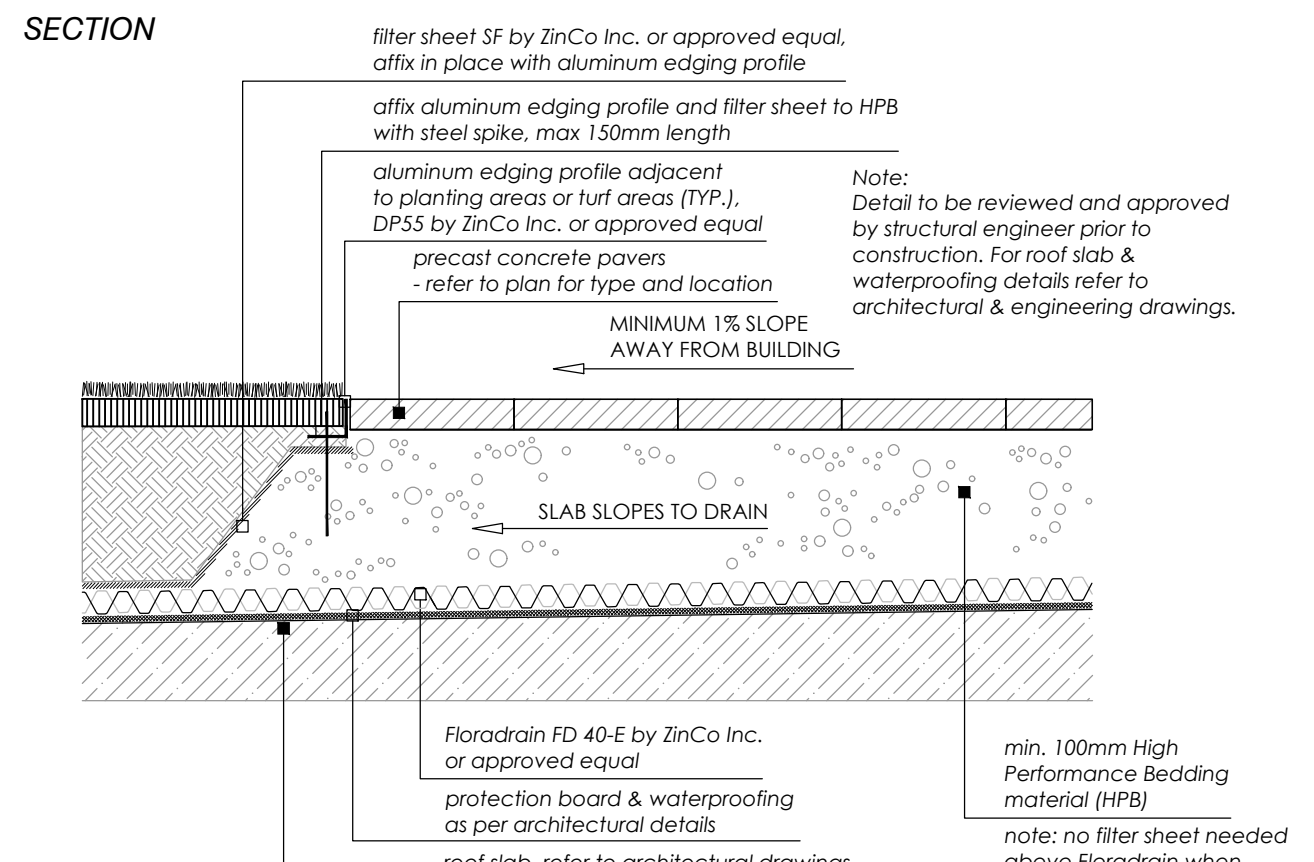
- Paver types are as follows (or approved equal):

TYPE	DESCRIPTION	PATTERN	SIZE	COLOUR
'A'	Promenade (Unilock)	Field	8' x 24" (203 X 609 mm)	Granite Blend II Campo Finish
- Unit pavers are 100mm thick. Contractor to provide samples on site to be approved by Landscape Architect and/or Owner.

Precast Concrete Unit Pavers (Pedestrian Surfaces Only)

SCALE: NTS

6 L-4



NOTES:

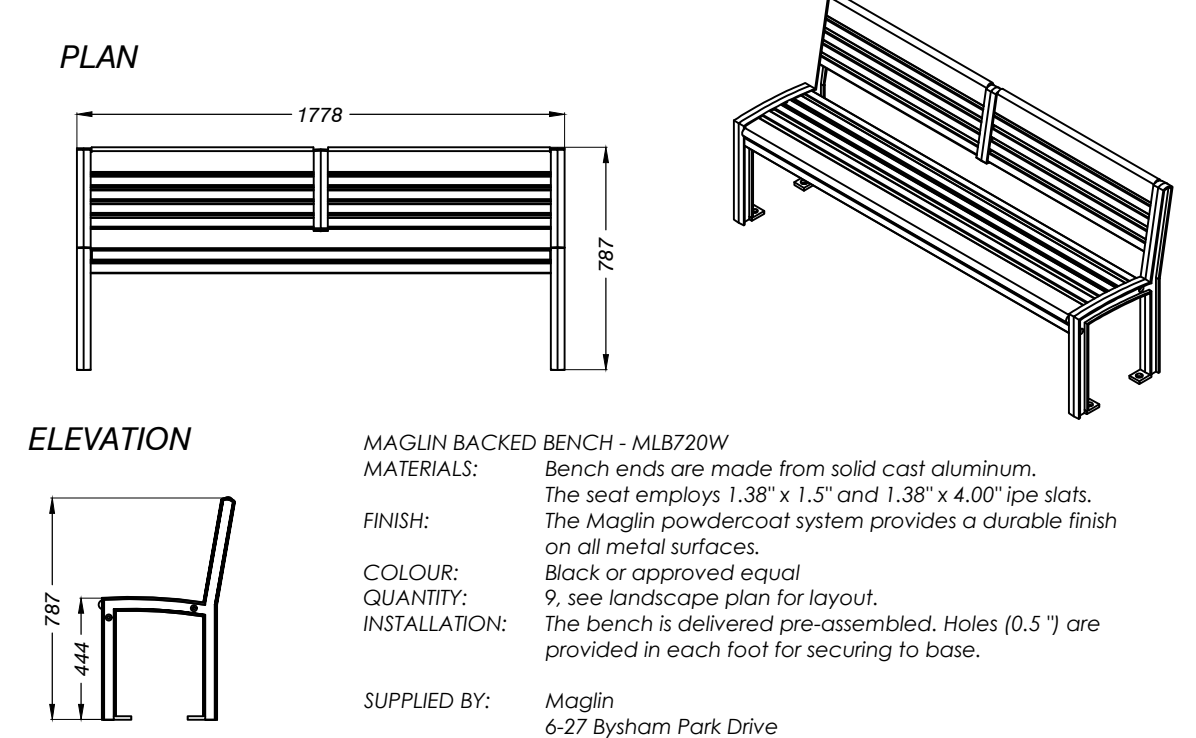
- Paver types are as follows (or approved equal):

TYPE	DESCRIPTION	PATTERN	SIZE	COLOUR
'A'	Promenade (Unilock)	Field	8' x 24" (203 X 609 mm)	Granite Blend II Campo Finish
- Unit pavers are 60mm thick. Contractor to provide samples on site to be approved by Landscape Architect and/or Owner.

Precast Concrete Pavers on Slab - Typical

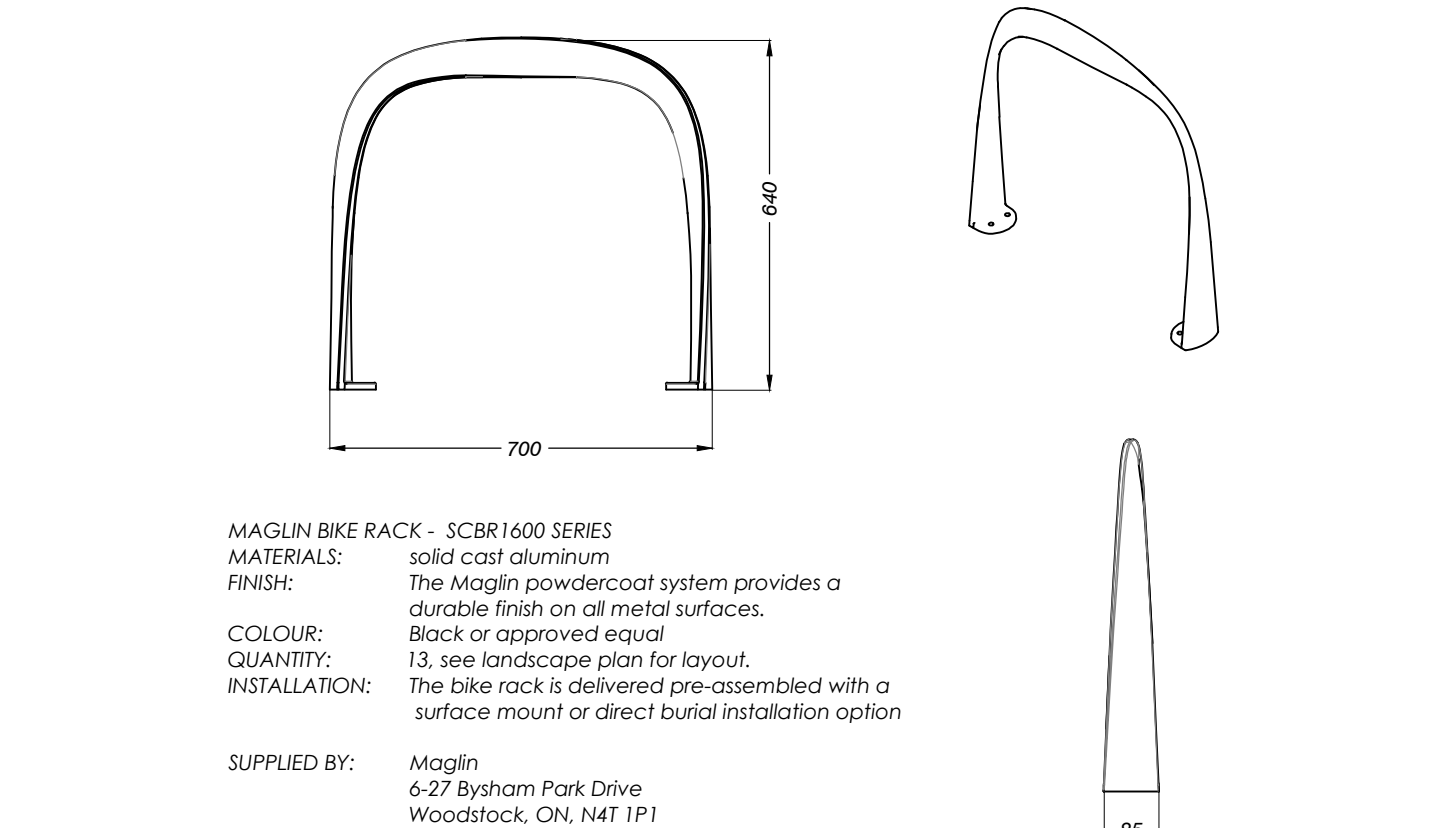
SCALE: NTS

9 L-4



Backed Bench by Maglin (or approved equal)

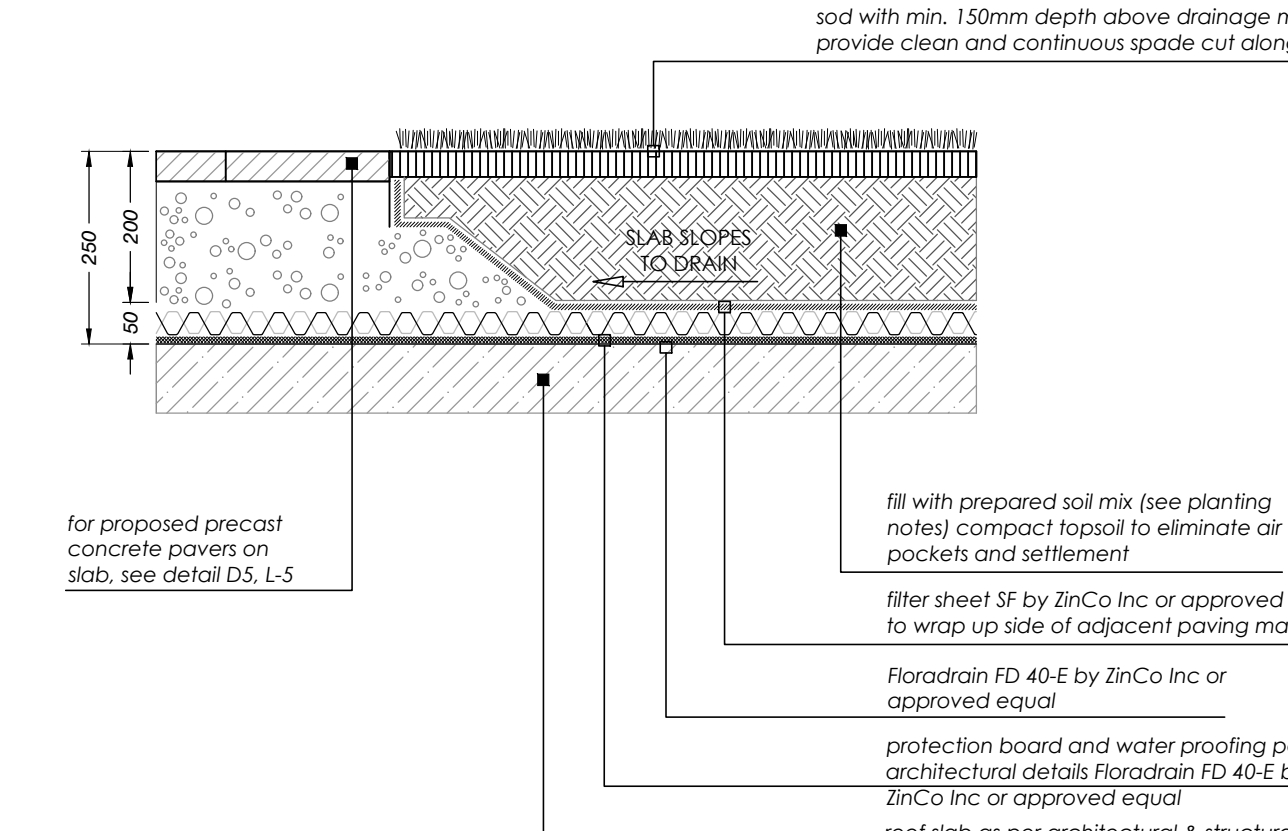
SCALE: NTS



Bike Rack by Maglin (or approved equal)

SCALE: NTS

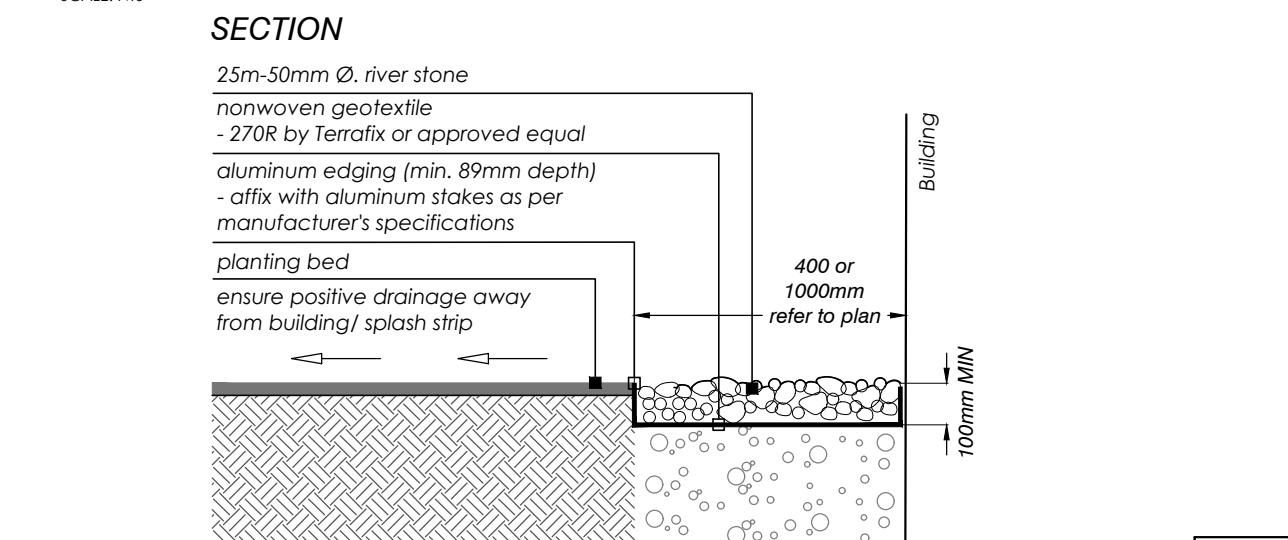
8 L-4



Sod Planting Over Structural Slab

SCALE: NTS

10 L-4



River Stone Splash Strip

SCALE: NTS

11 L-4

GENERAL CONCRETE NOTES:

- Do concrete materials and methods of concrete construction in accordance with OPCS 351.
- Contractor to verify accuracy of concrete details and reinforcement prior to installation.
- Provide following materials:
 - cement: to OPCS 905 and 1350;
 - aggregates for concrete: OPCS 905 and 1350;
 - reinforcing steel if detailed: OPCS 905 and 1350;
 - concrete form snap ties with plastic cones & breakback to be used. Surface patches as required;
 - form stripping agent: colorless mineral oil, free of kerosene;
 - latex bonding agent: Sikabond, Sikamix, or approved equal;
 - form lumber and plywood: clean, free of loose knots, splits and with repairs made smoothly and securely;
 - joint fillers: preformed, non-extruding, resilient bituminous type;
 - admixtures: to be used only when approved by Engineer;
 - aggregates for base: Granular 'A' to OPCS form 1010;
 - water: water used in mixing or curing shall be reasonably clean and free of oil, salt, acid, alkali, sugar, vegetable matter or other substance injurious to the finished project and shall meet the requirement of OPCS.
- Concrete mix to provide compressive strength of 28MPa at 28 days, entrained air of 6% to 1% and slump at point of discharge of 60mm for curbs and footings.
- Granular base to be compacted to 95% maximum dry density to OPCS and to depths as detailed.
- Pour concrete in favourable weather conditions.
- Apply surface finish as detailed.
- Repair defective areas while concrete is still plastic, or remove defective work and replace with new concrete.
- Concrete areas will not be accepted if:
 - fails to meet requirements of this specification;
 - contains excessive honeycombing or embedded debris;
 - 28 days average strength in any defined area is less than 95% of specified minimum strength;
 - surface irregularities;
 - damaged or chipped;
 - poor workmanship.
- It is the contractor's responsibility to maintain and protect concrete areas until time of final acceptance.

NOTES FOR JOINTING

- Joint pattern as per layout plan unless otherwise noted;
- All edges to be hand tooled, using an edging tool with a 6mm radius. No visible tool mark to remain (broom finish over flush joint);
- Saw cut control joints to 37.5 mm depth (1/4 depth of material) @ max 2000mm each way spacing unless otherwise indicated on plan;
- Isolation joints at all fixed objects abutted by concrete (e.g. walls, curbs, light poles etc.). Sealant colour to complement paving surface.

COLOURED CONCRETE NOTES:

- Class C-2; 32 MPa; 0.45 w/cm ratio; 3%-8% air entrainment; 100 mm slump (maximum); for all exterior slabs on grade as required by CAN/CSA-A23.1 & OBC using quality proven aggregate.
- Colour to be integrally mixed with the concrete at the time of batching. Air entrainment (5%-8%) must be measured after the colour has been mixed in. Natural or synthetic mineral oxides to comply with CSA A23.1 AND OPCS 1350.
- Contractor to provide 1m x 1m sample on site for approval by Owner and/or Landscape Architect.

Cast-in-place Concrete Notes

NOT FOR CONSTRUCTION
ISSUED FOR REVIEW & COMMENTS ONLY

REVISIONS/ SUBMISSIONS

#	DATE	DESCRIPTION
1	2019-08-08	Issued for submission
2	2019-08-21	Issued for client review
3	2020-07-15	Issued for review
4	2021-06-10	Issued for review
5	2021-06-30	Issued for submission



CLIENT
Distrikt
MUNICIPALITY
Town of Oakville

PROJECT
Trafalgar
3064 Trafalgar Road

MUNICIPAL FILE NUMBER

SHEET
Details

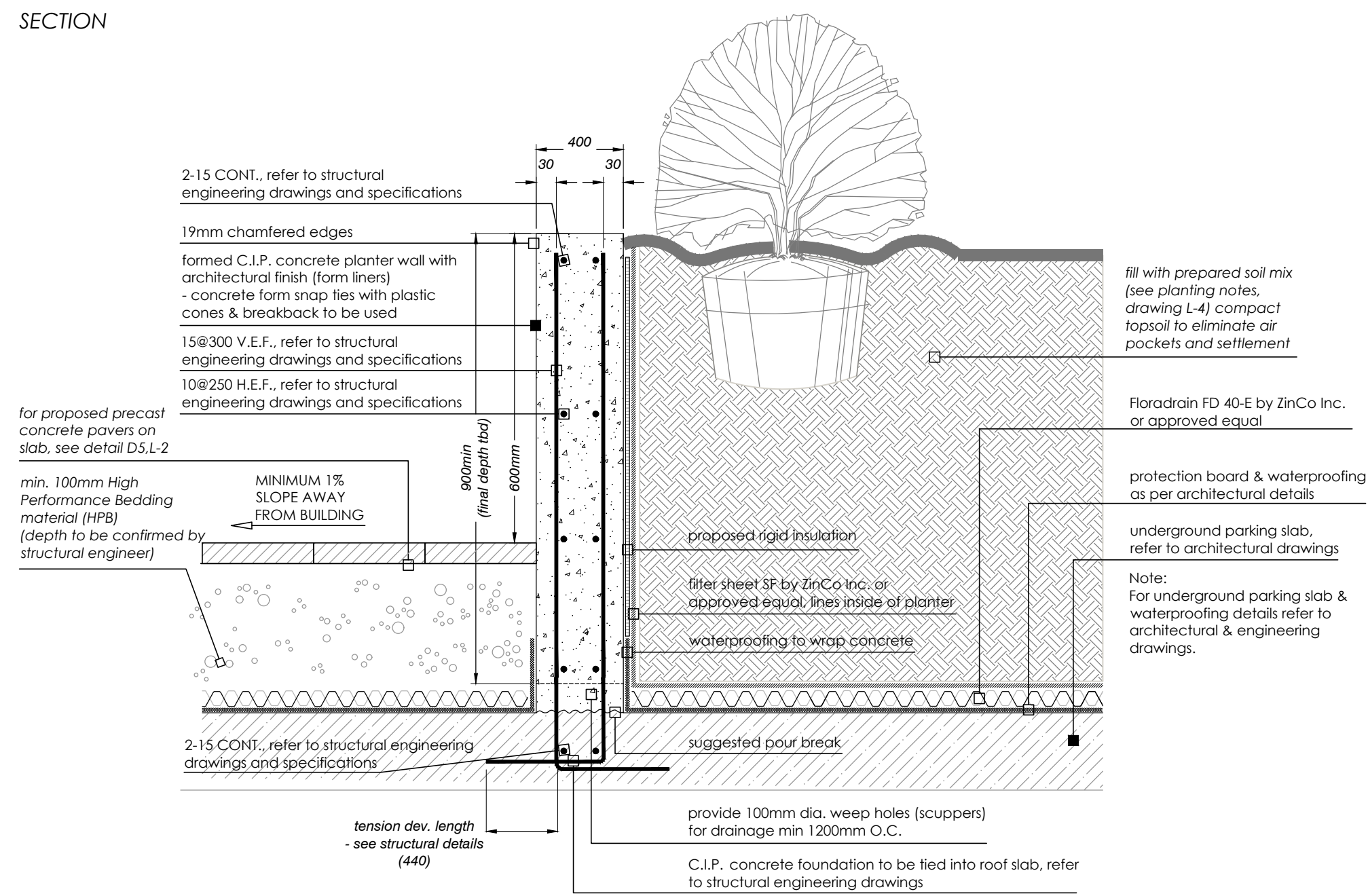
adesso design inc.
landscape architecture

218 Locke Street South, 2nd Floor
Hamilton, ON L8P 4B4
t. 905.526.8876
www.adessodesigninc.ca

L-4

1. 2019-08-08: Initial design and site plan. 2. 2019-08-21: Client review. 3. 2020-07-15: Structural engineering review. 4. 2021-06-10: Final design and construction notes. 5. 2021-06-30: Final submission.

SECTION



GENERAL NOTES:

1. Detail to be reviewed and approved by structural engineer.

CONCRETE NOTES:

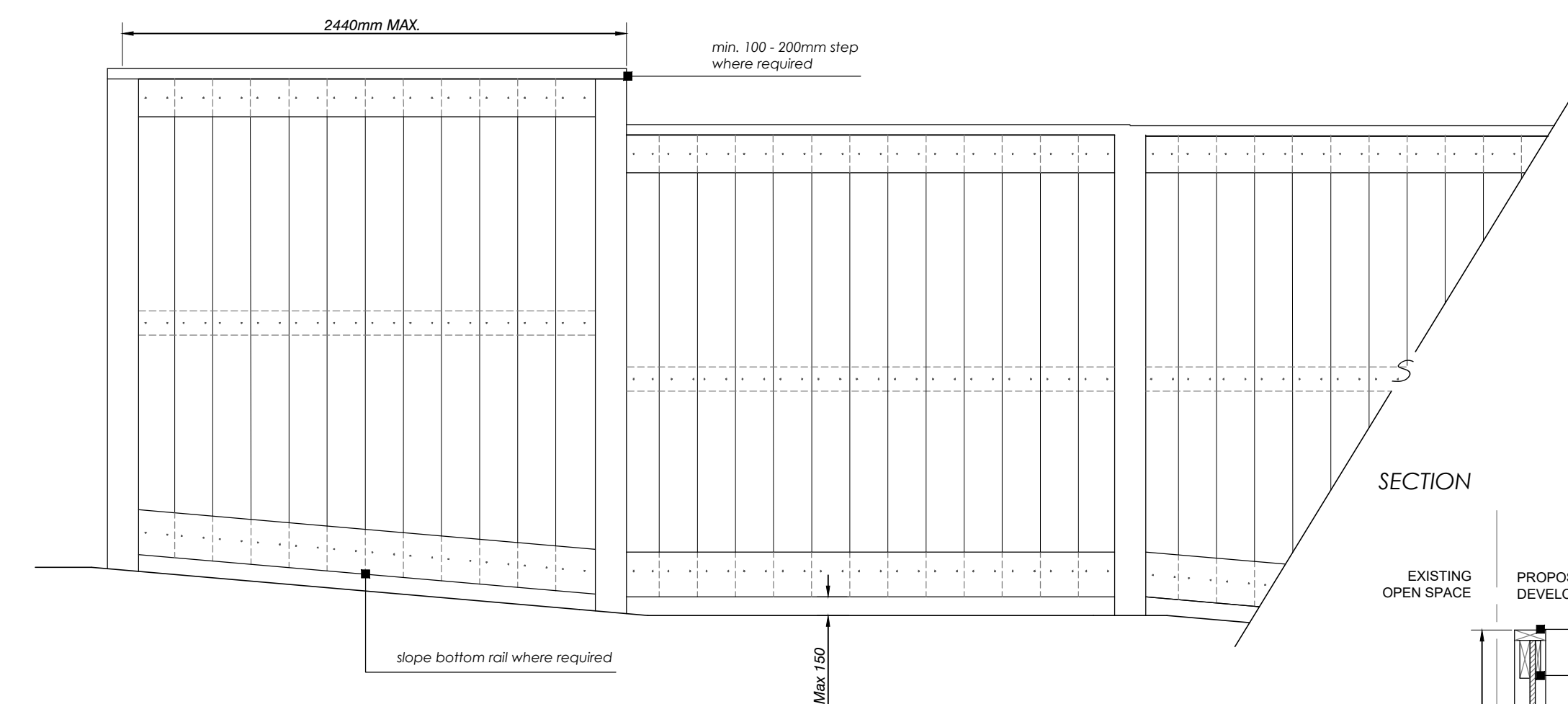
- Do concrete materials and methods of concrete construction in accordance with structural engineering drawings.
- Contractor to verify accuracy of concrete details and reinforcement prior to installation.
- For construction materials refer to structural engineering drawings and specifications.
- Concrete mix to provide compressive strength of 28MPa at 28 days, entrained air of 0.6 to 1% and slump at point of discharge of 60mm, or as per structural engineering drawings and specifications.
- Pour concrete in favorable weather conditions. Inform the landscape architect of any adverse weather impacts prior to pouring.
- Pour concrete in uniform layers of continuous lengths between expansion joints. An expansion joint is required where placing has been suspended for 30 minutes.
- Provide control joints at 4500 c/c maximum and expansion joints of 9000 c/c maximum unless noted otherwise. See typical construction details for control and expansion joint details.
- Surface finish of planter is to be an architectural finish with the use of form liners.
- Repair defective areas while concrete is still plastic, or remove defective work and replace with new concrete.
- Concrete areas will not be accepted if:
 - fails to meet requirements of this specification
 - contains excessive honeycombing or embedded debris
 - 28 days average strength in any defined area is less than 95% of specified minimum strength.
 - surface irregularities.
 - damaged or chipped.
 - poor workmanship.
- It is the contractor's responsibility to maintain and protect concrete areas until time of final acceptance.

Cast-In-Place Concrete Raised Planter

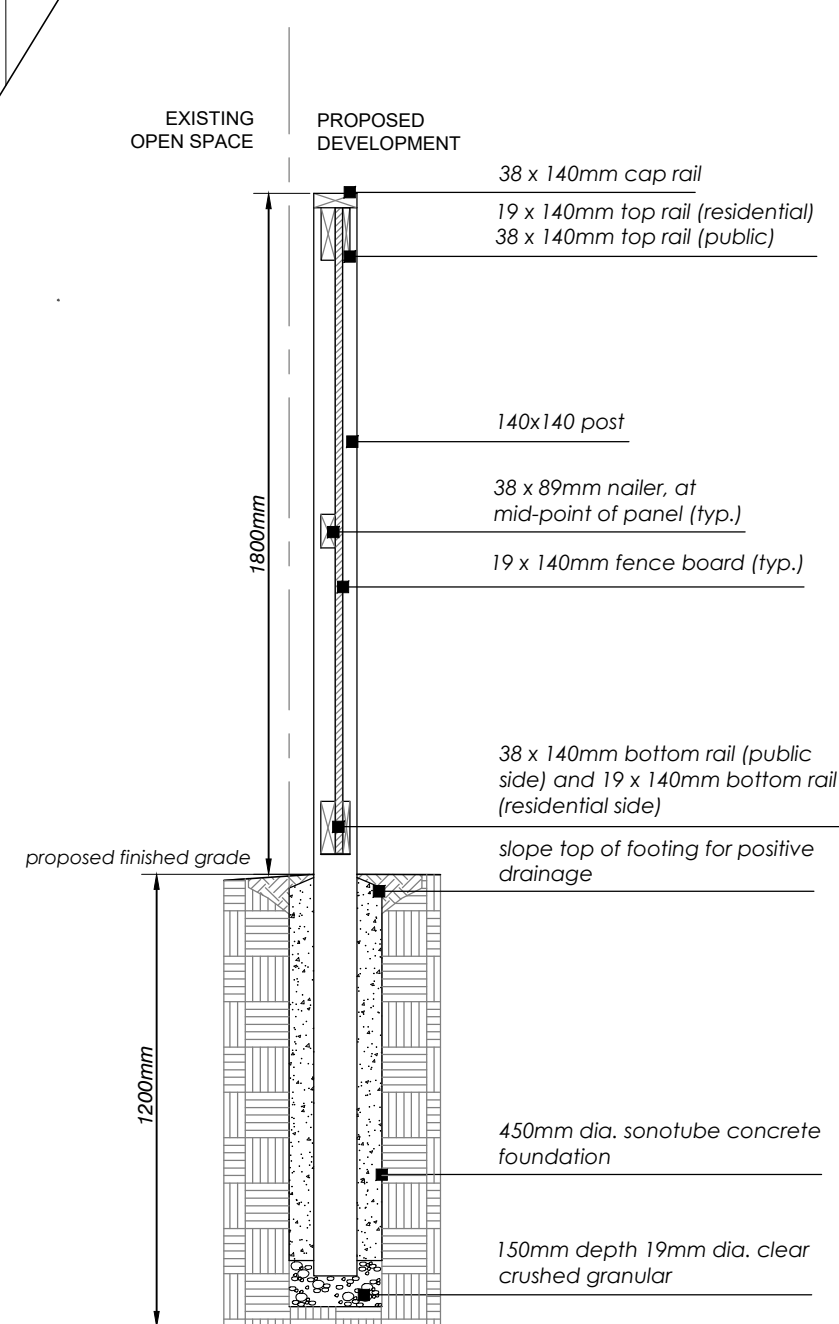
Scale: NTS

1 / L-5

ELEVATION



SECTION



GENERAL LAYOUT NOTES

- All fences adjacent to road allowances and walkways to be erected 0.15m onto private property. Fencing is not to be erected on the lot line or into any road allowance or easement.
- Footing and excavation to be entirely on proposed development lands.

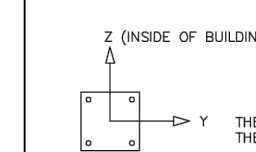
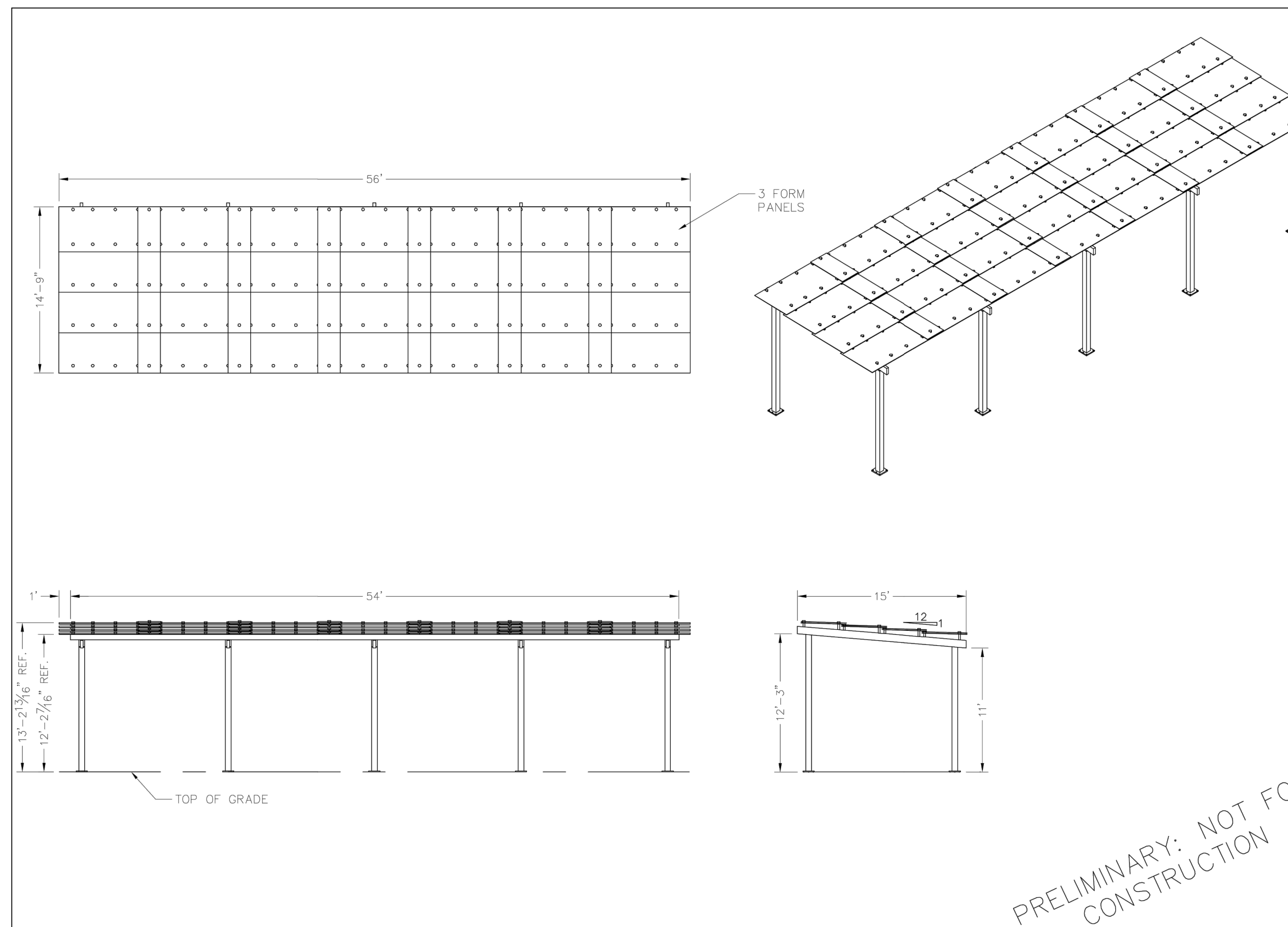
2 / L-5

NOTES:

- All materials, components and workmanship to conform to building and local by-laws.
- All wood to be Pressure Treated (Spruce, Pine Fir) selected mainly for good appearance all members shall be free of wane and bark pockets. All joinery shall be eliminated by sanding and planing. Members exhibiting moderate to heavy knots shall be well distributed throughout the site.
- All cuts and holes that expose untreated wood should be liberally brush-coated with two applications of an end-cut preservative (copper naphthenate in ground contact or zinc naphthenate above ground) before the wood is installed. Follow the manufacturer's recommendations re: the application of suitable preservatives.
- All wood to bear lumber grading stamp.
- All fasteners shall have exterior grade finishes suitable for use with Pressure treated lumber. Stainless steel, galvanized, zinc-dipped or ceramic-coated wood/deck screws are acceptable.
- All galvanizing to be hot dipped in conformance to CSA standard C154.
- Drive all fastener heads below surface of wood. Use sufficient size and quantity of fasteners to ensure a stable, secure structure.
- Step fence panels minimum of 100 - 200mm at posts as required by grade conditions. Sloping of panels may be required for certain grade conditions - Consultant's approval required.
- Lumber sizes are actual sizes rather than nominal sizes.
- Concrete to have minimum compressive strength of 25 MPa @ 28 days with 5-7% air entrainment.
- See landscape plan for fence location.

Wood Privacy Fence (1.8m height - pressure treated)

Scale: NTS

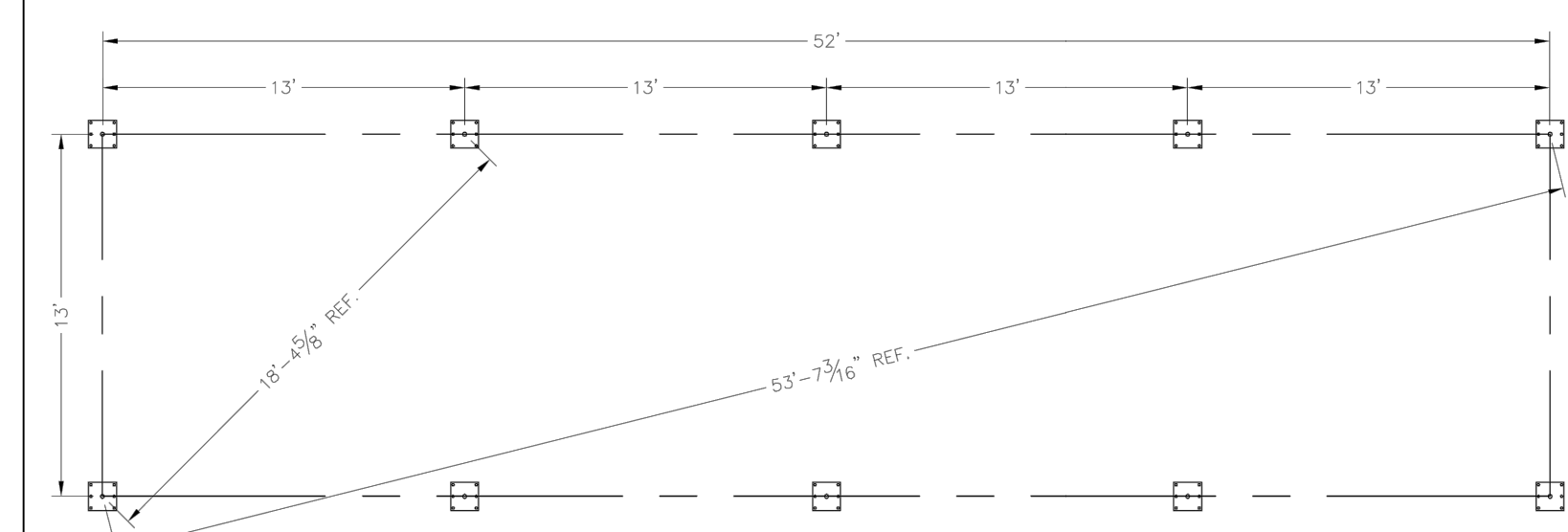


THESE FOUNDATION LOADS ARE FOR ESTIMATING PURPOSE ONLY. THE ACTUAL LOADS WILL BE DETERMINED IN THE FINAL ENGINEERING.

LOADS TO FOUNDATION (KIPS, KIPOUS)	FOUNDATION LOADS (KI, KI)				
	AXIAL (F _X)	SHEAR (F _Y)	SHEAR (F _Z)	MOMENT (M _Y)	MOMENT (M _Z)
DL	0.93	0.00	0.04	-1.98	0.00
SL	5.37	0.00	0.33	-14.39	0.00
W-UP/LIFT	-2.57	0.00	0.30	-22.47	0.00
W-FY	-1.67	0.35	-0.12	4.14	33.03
W-FZ	-2.97	0.00	0.30	-22.47	0.00
E-FY	-0.26	0.78	-0.02	1.40	81.27
E-FZ	-0.60	0.00	-0.65	15.33	0.00

NOTES:
 - TABLE SHOWS UNFACTORED SERVICE LOADS
 - A FOUNDATION DESIGN HAS NOT BEEN PERFORMED BY ICON SHELTER SYSTEMS INC. MUST PERFORM A FOUNDATION DESIGN.
 - THE STRUCTURE HAS BEEN ENGINEERED AS AN OPEN STRUCTURE.
 - CONSULT ICON SHELTER SYSTEMS INC. IF THE STRUCTURE IS TO BE ENCLOSED.
 - COORDINATES ARE LOCAL TO THE COLUMN.

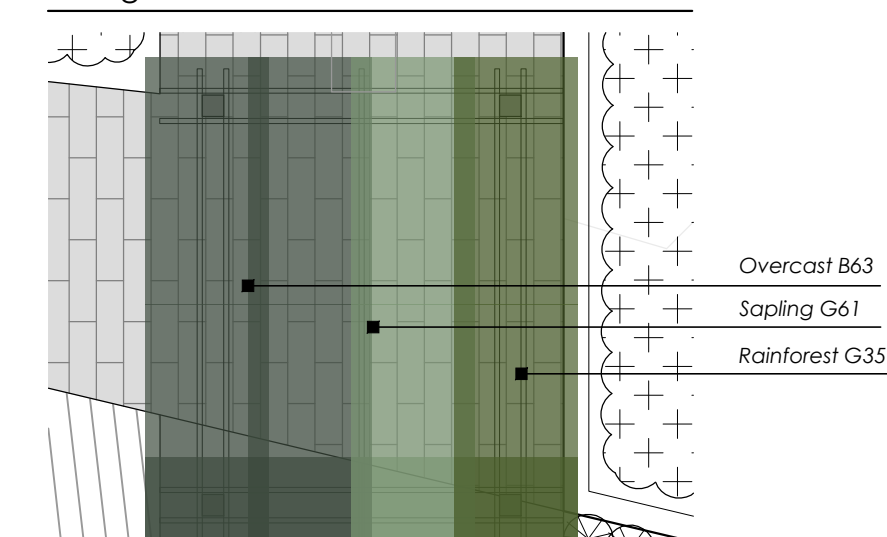
DEFINITIONS:
 SL = SERVICE LEVEL DEAD LOAD REACTION WITH THE GREATEST AXIAL LOAD
 SLL = SERVICE LEVEL SNOW LOAD REACTION WITH THE GREATEST AXIAL LOAD
 W-UL = SERVICE LEVEL WIND LOAD REACTION WITH THE GREATEST UPLIFT LOAD
 W-Y = SERVICE LEVEL WIND LOAD REACTION WITH THE GREATEST MAGNITUDE OF SHEAR IN THE LOCAL Y DIRECTION
 W-Z = SERVICE LEVEL WIND LOAD REACTION WITH THE GREATEST SHEAR VALUE ACTING IN THE SAME DIRECTION AS THE Z-SHEAR LOAD
 E-Y = SERVICE LEVEL EISMIC LOAD REACTION WITH THE GREATEST MAGNITUDE OF SHEAR IN THE LOCAL Y DIRECTION
 E-Z = SERVICE LEVEL EISMIC LOAD REACTION WITH THE GREATEST MAGNITUDE OF SHEAR IN THE LOCAL Z DIRECTION



NOTES

- Shade structure roof to be sloped as per above detail. Roof is to slope to the west side towards the lawn area. (see L-2 Enlargement 'A' for layout).
- Overhead coloured panels to be from 3 Form panels and to consist of the following colour palette:
 - Overcast B63
 - Sapling G61
 - Rainforest G35
 (see enlargement for layout)

Enlargement

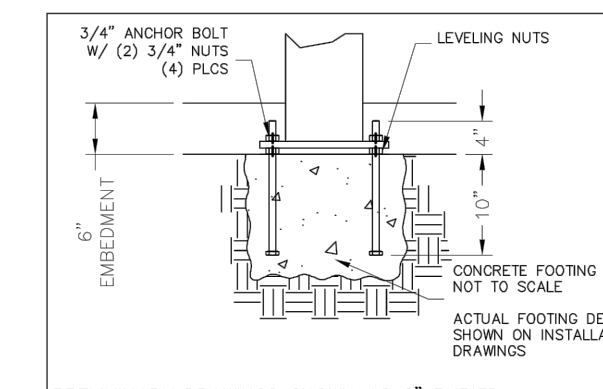


PRELIMINARY: NOT FOR CONSTRUCTION

PRELIMINARY: NOT FOR CONSTRUCTION

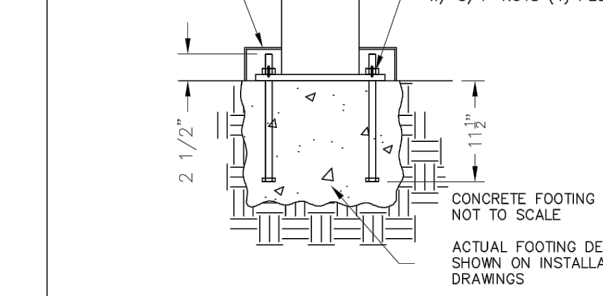
ALL STRUCTURAL COMPONENTS WILL BE TUBE: ASTM A500 GRADE B
 PLATE: ASTM A36
 BOLTS: ASTM A325
 NUTS: ASTM A563
 WELDING: GMAW

NOTE:
 COLUMN SIZE: HSS 6x6x1/4



PRELIMINARY DRAWINGS SHOWN AS 6" BURIED

STANDARD BASE CONNECTION
 COLUMN TYPE: A (6" BURIED)



OPTIONAL BASE CONNECTION
 COLUMN TYPE: B (SURFACE MOUNT W/ COVERS)

NOT FOR CONSTRUCTION
 ISSUED FOR REVIEW & COMMENTS ONLY

REVISIONS/SUBMISSIONS

#	DATE	DESCRIPTION
1	2019-08-08	Issued for submission
2	2019-08-21	Issued for client review
3	2020-07-15	Issued for review
4	2021-06-10	Issued for review
5	2021-06-30	Issued for submission

STAMP



CLIENT
 Distrikt
 MUNICIPALITY
 Town of Oakville

PROJECT
 Trafalgar
 3064 Trafalgar Road

MUNICIPAL FILE NUMBER

SHEET
 Details

L-5

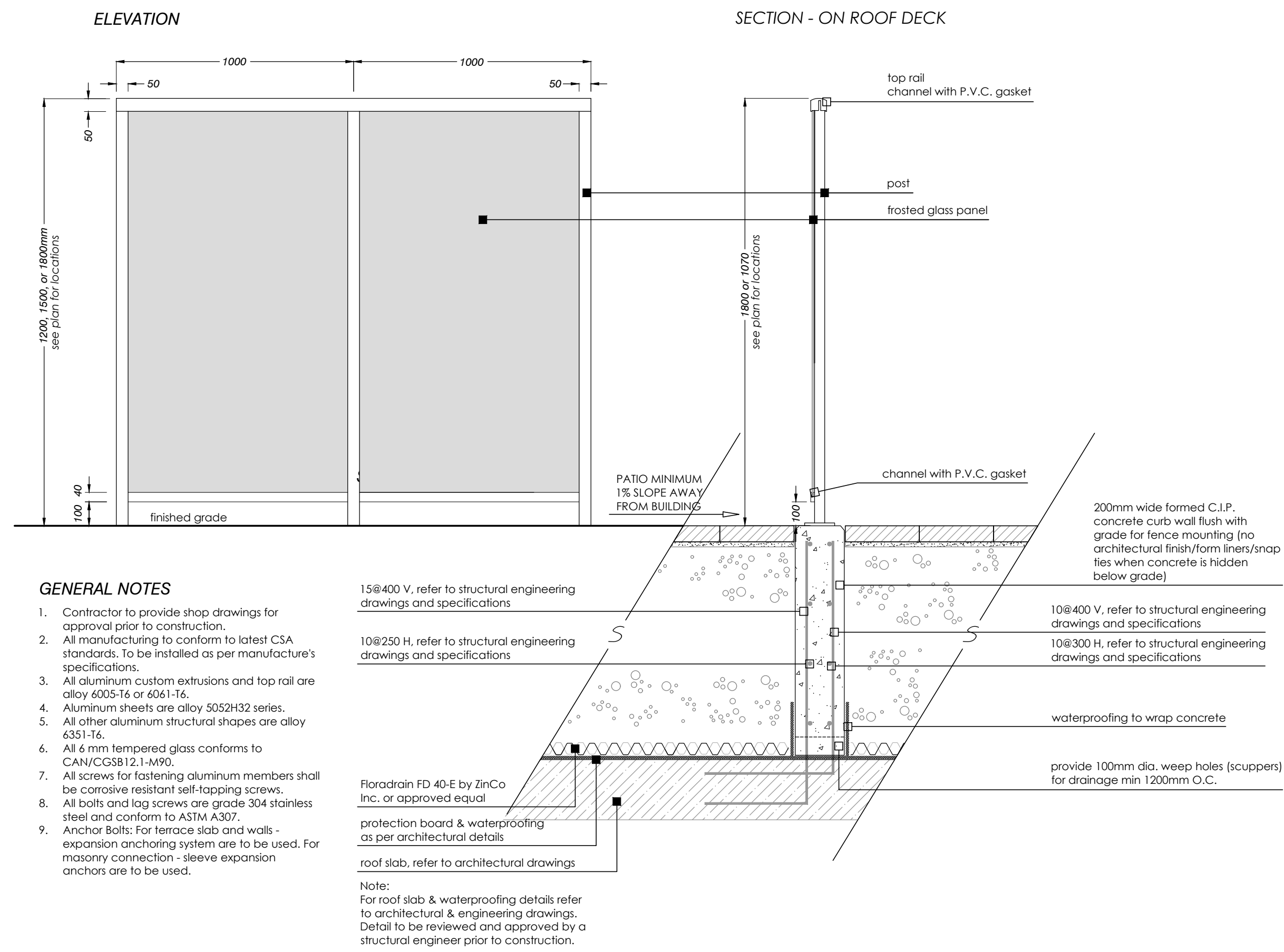
adesso design inc.
 landscape architecture

218 Locke Street South, 2nd Floor
 Hamilton, ON L8P 4B4
 t. 905.526.8876
 www.adessodesigninc.ca

3 / L-5

Shade Structure

Scale: NTS



- GENERAL NOTES**
- Contractor to provide shop drawings for approval prior to construction.
 - All manufacturing to conform to latest CSA standards. To be installed as per manufacture's specifications.
 - All aluminum custom extrusions and top rail are alloy 6005-T6 or 6061-T6.
 - Aluminum sheets are alloy 5052H32 series.
 - All other aluminum structural shapes are alloy 6061-T6.
 - All 6 mm tempered glass conforms to CAN/CGSB12.1-M90.
 - All screws for fastening aluminum members shall be corrosion resistant self-tapping screws.
 - All bolts and lag screws are grade 304 stainless steel and conform to ASTM A307.
 - Anchor bolts: For terrace slab and walls - expansion anchoring system are to be used. For masonry connection - sleeve expansion anchors are to be used.

158400 V, refer to structural engineering drawings and specifications

108250 H, refer to structural engineering drawings and specifications

108400 V, refer to structural engineering drawings and specifications

108300 H, refer to structural engineering drawings and specifications

waterproofing to wrap concrete

provide 100mm dia. weep holes (scuppers) for drainage min 1200mm O.C.

Floradrain FD 40-E by ZinCo Inc. or approved equal

protection board & waterproofing as per architectural details

roof slab, refer to architectural drawings

Note:
For roof slab & waterproofing details refer to architectural & engineering drawings. Detail to be reviewed and approved by a structural engineer prior to construction.

Metal & Frosted Glass Privacy Screen

1
L-6

NOT FOR CONSTRUCTION
ISSUED FOR REVIEW & COMMENTS ONLY

REVISIONS/ SUBMISSIONS

#	DATE	DESCRIPTION
1	2019-08-08	Issued for submission
2	2019-08-21	Issued for client review
3	2020-07-15	Issued for review
4	2021-06-10	Issued for review
5	2021-06-30	Issued for submission



CLIENT
Distrikt

MUNICIPALITY
Town of Oakville

PROJECT
Trafalgar
3064 Trafalgar Road

MUNICIPAL FILE NUMBER

SHEET
Details

L-6

adesso design inc.
landscape architecture

218 Locke Street South, 2nd Floor
Hamilton, ON L8P 4B4
t. 905.526.8876
www.adessodesigninc.ca

1. All drawings are the property of adesso design inc. and shall remain confidential. No part of these drawings may be reproduced, stored in a retrieval system, or transmitted in any form or by any means, electronic, mechanical, photocopying, recording, or by any information storage and retrieval system, without the prior written permission of adesso design inc. All rights reserved.