

PROJECT
AMICA SENIOR LIVING
152 WILSON STREET
 OAKVILLE, ON

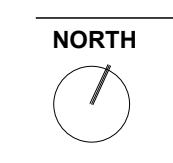
FOR
 AMICA/AMICO

PROJECT NUMBER
 250607

APPLICATION NUMBER
 XXXXXX

LEGEND

- PROPERTY LINE
- LIMIT OF UNDERGROUND SLAB
- LIMIT OF CANOPY ABOVE
- PRIVACY FENCING
- ACOUSTIC BARRIER
- TREE PROTECTION ZONE
- PROPOSED DECIDUOUS TREE
- EXISTING TREE TO BE REMOVED REFER TO ARBORIST REPORT
- EXISTING TREE TO BE RETAINED REFER TO ARBORIST REPORT
- PROPOSED PLANTING
- CONCRETE PAVING
- FEATURE UNIT PAVING
- HERRINGBONE UNIT PAVING
- RUBBER SURFACING
- PROPOSED BIKE RACK
- PROPOSED BENCH
- PROPOSED BOLLARD LIGHT
- PROPOSED TRELLIS LIGHTING
- PROPOSED ILLUMINATED HANDRAIL



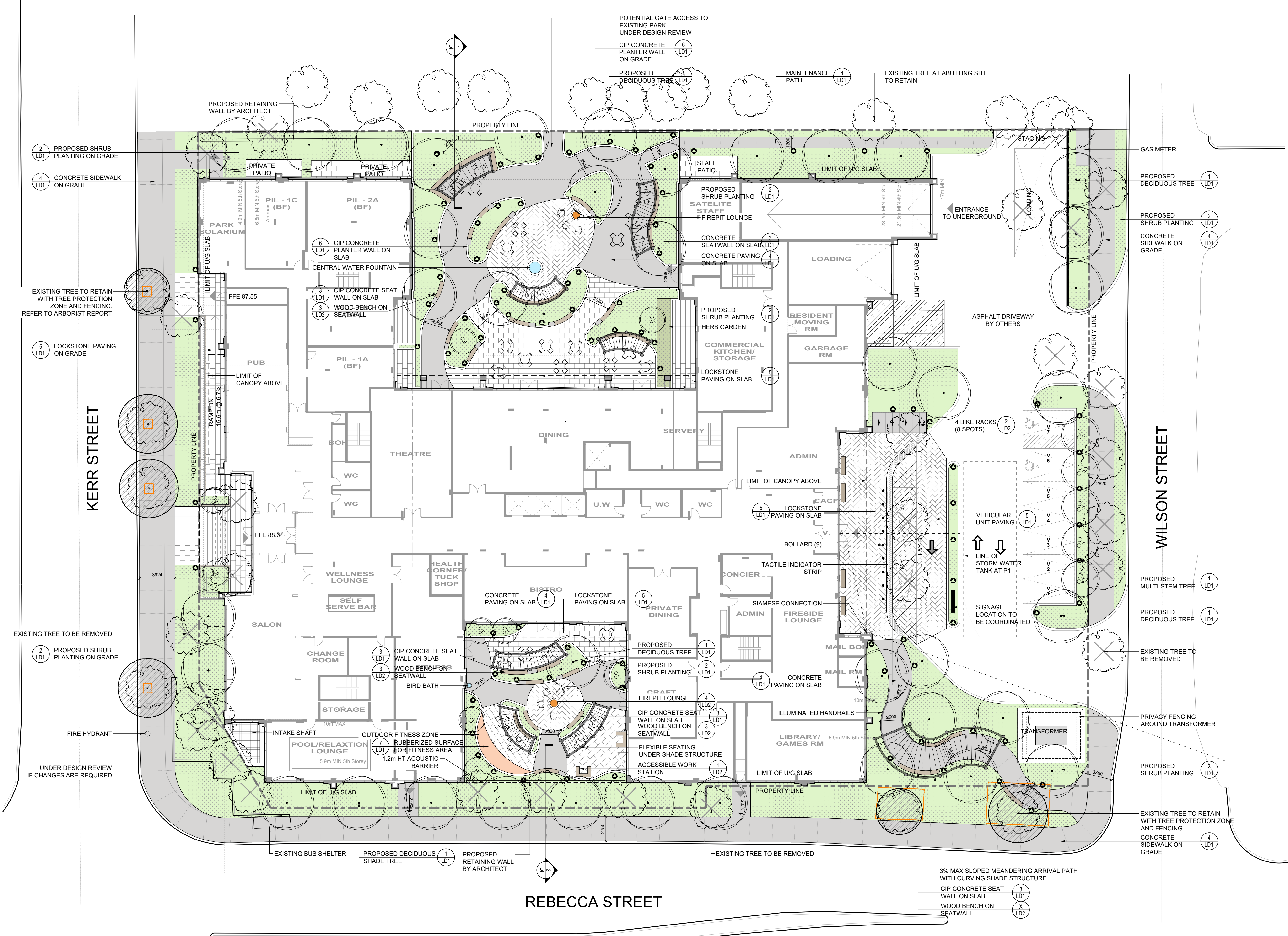
NOT FOR CONSTRUCTION

REVISIONS:	NO.	DESCRIPTION.	DATE.	BY.
2	ISSUED FOR SPA 1		17 SEPT, 2025	HP
1	ISSUED FOR PAC REVIEW		08 SEPT, 2025	HP

DESIGNED BY: **HP** CHECKED BY: **TG**

DRAWING TITLE:

LANDSCAPE MASTERPLAN
 1:200



PROJECT
AMICA SENIOR LIVING
152 WILSON STREET
 OAKVILLE, ON

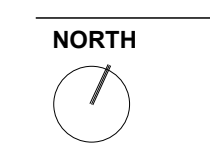
FOR
 AMICA/AMICO

PROJECT NUMBER
 250607

APPLICATION NUMBER
 XXXXXX

LEGEND

- PROPERTY LINE
- 88.49 88.54 EX. EXISTING GRADE LABEL
- ⊗ EXISTING VALVE CHAMBER
- ⊙ EXISTING HYDRANT
- ⊙ EXISTING STORM MANHOLE
- ⊞ EXISTING CATCHBASIN
- ⊙ EXISTING SANITARY MANHOLE
- 88.20 1.0% PROPOSED GRADE LABEL
- ⊞ PROPOSED SLOPE LABEL
- ⊞ PROPOSED VALVE AND BOX
- ⊙ PROPOSED HYDRANT
- ⊙ PROPOSED STORM MANHOLE
- ⊞ PROPOSED CATCHBASIN
- ⊙ PROPOSED SANITARY MANHOLE
- ▬ PROPOSED RETAINING WALL
- ▬ LIMIT OF UNDERGROUND
- ↗ PROPOSED OVERLAND FLOW DIRECTION



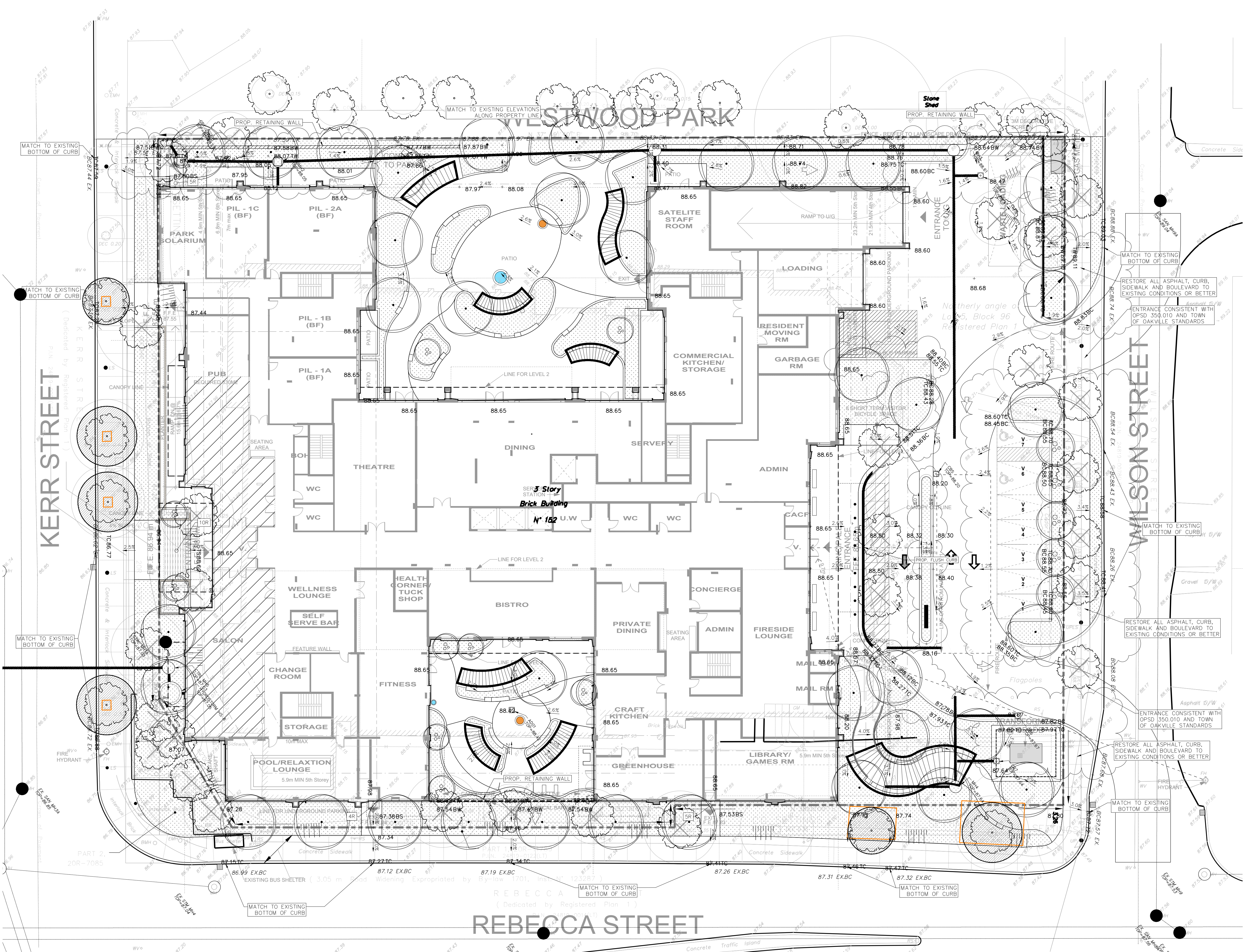
NOT FOR CONSTRUCTION

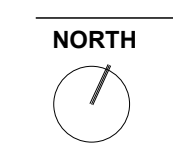
REVISIONS:	NO.	DESCRIPTION.	DATE.	BY.
1	ISSUED FOR SPA 1		17 SEPT, 2025	HP

DESIGNED BY: **HP** CHECKED BY: **TG**

DRAWING TITLE:

COMPOSITE UTILITIES PLAN
 1:200





NOT FOR CONSTRUCTION

REVISIONS:	NO.	DESCRIPTION.	DATE.	BY.

1 ISSUED FOR SPA 1 17 SEPT, 2025 HP
 DESIGNED BY: HP CHECKED BY: TG

DRAWING TITLE:

PLANTING PLAN
 1:200

L3A

SYMBOL	CODE	BOTANICAL / COMMON NAME	CONTAINER	CALIPER	QTY	REMARKS	
TREES							
	AG	Acer griseum / Paperbark Maple	60L		7		
	AS2	Acer saccharum / Sugar Maple	60L		2		
	BW	Betula populifolia 'Whitespire' / Whitespire Gray Birch	60L		4		
	CO	Celtis occidentalis / Common Hackberry	60L		8		
	GP	Ginkgo biloba 'Princeton Sentry' / Princeton Sentry Maidenhair Tree	60L		3		
	GI	Gleditsia triacanthos inermis 'Impcole' / Imperial® Honey Locust	60L		5		
	GK	Gymnocladus dioica / Kentucky Coffeetree	60L		6		
	LE	Liriodendron tulipifera 'JFS-Oz' / Emerald City® Tulip Poplar	60L		1		
	OV	Ostrya virginiana / American Hophornbeam	60L		2		
	PP	Prunus subhirtella 'Pendula' / Weeping Higan Cherry	60L		1		
	QR	Quercus rubra / Northern Red Oak	60L		5		
SYMBOL	CODE	BOTANICAL / COMMON NAME	CONTAINER	HEIGHT	SPACING	QTY	REMARKS
SHRUBS							
	AS	Amelanchier alnifolia / Serviceberry	20L		3 m	6	
	BG	Buxus x 'Green Velvet' / Green Velvet Boxwood	#5 CONT.		0.7 m	25	
	CR2	Cornus sericea / Red Twig Dogwood	#2 CONT.		1.5 m	20	
	CF2	Cornus sericea 'Farrow' / Arctic Fire® Red Twig Dogwood	#2 CONT.		0.75 m	16	
	CF	Cornus sericea 'Flaviramea' / Yellow Twig Dogwood	#2 CONT.		1.5 m	12	
	ML	Diervilla lonicera 'Summer Stars' / Summer Stars Honeysuckle	50 count plug		0.9 m	29	
	JA	Juniperus sabina 'Arcadia' / Arcadia Juniper	#2 CONT.		0.75 m	40	
	PB	Physocarpus opulifolius 'AuntieB' / Calico Kitty™ Ninebark	#2 CONT.		0.8 m	21	
	RK	Rhododendron x 'Ken Janeck' / Ken Janeck Yaku Rhododendron	20L		0.9 m	4	
	RM	Rhododendron x 'P.J.M. Compact' / P.J.M. Compact Rhododendron	#2 CONT.		0.8 m	22	
	RA	Ribes alpinum / Alpine Currant	#2 CONT.	1.50 m	1.2 m	31	MATURE SIZE: 1.5m HT x 1.5m SPR; 1.2m OC
	RH	Rosa rugosa 'Hansa' / Hansa Rose	60L		0.8 m	3	
	RT	Rosa rugosa 'Therese Bugnet' / Therese Bugnet Rose	60L		1 m	2	
	RR	Rosa x 'CA 29' / First Editions® Campfire Rose	60L		0.8 m	3	
	RH2	Rosa x 'CCA576' / Canadian Shield Rose	60L		0.8 m	3	
	RX2	Rosa x 'Emily Carr' / Emily Carr Shrub Rose	60L		0.8 m	4	
	RX	Rosa x 'John Cabot' / John Cabot Climbing Rose	60L		1 m	3	climbing rose, plant with trellis structure
	RM2	Rosa x 'Morden Blush' / Morden Blush Parkland Shrub Rose	60L		0.6 m	8	
	RM3	Rosa x 'Morden Sunrise' / Morden Sunrise Shrub Rose	60L		0.6 m	2	
	R3	Rosa x 'Radrazz' / Knock Out® Shrub Rose	60L		0.9 m	2	
	RW	Rosa x 'William Baffin' / William Baffin Climbing Rose	60L		1.2 m	2	climbing rose, plant with trellis structure
	SR	Syringa x prestoniae 'Royalty Late' / Royalty Late Lilac	#5 CONT		2.5 m	3	MATURE SIZE: 2.4m HT x 1.8m SPR; 2.4m OC
	TW2	Thuja occidentalis 'Woodwardii' / Woodward Arborvitae	#5 CONT		2 m	1	
PERENNIALS							
	CR	Crocus tommasinianus 'Ruby Giant' / Ruby Giant Crocus	Bulb		0.3 m	65	7 to 9 bulbs per symbol
	ND	Narcissus x 'Dutch Master' / Dutch Master Daffodil	Bulb		0.4 m	73	7 to 9 bulbs per symbol

SYMBOL	CODE	BOTANICAL / COMMON NAME	CONTAINER	SPACING	QTY	REMARKS
GROUND COVERS						
	AB2	Amsonia tabernaemontana 'Blue Ice' / Blue Ice Eastern Bluestar	#2 cont.	500 mm	19	
	AM	Anaphalis margaritacea / Pearly Everlasting	50 count plug	300 mm	43	
	AC	Anemone canadensis / Canadian Anemone	10cm	250 mm	624	
	AN	Artemisia schmidtiana 'Nana' / Dwarf Artemisia	#1 Cont.	250 mm	59	
	AD	Aruncus dioicus / Goatsbeard	#1 Cont.	800 mm	39	
	AE	Astilbe x arendsii 'Erica' / Erica Astilbe	#2 cont.	500 mm	14	
	AT	Astilboidea tabularis / Shield Leaf Rodgersia	#1 Cont.	600 mm	105	
	AH	Astrantia major 'Hadspen Blood' / Hadspen Blood Great Masterwort	#1 Cont.	400 mm	76	
	AL	Athyrium filix-femina 'Lady in Red' / Lady in Red Fern	#1 Cont.	450 mm	170	
	AR	Athyrium niponicum 'Regal Red' / Regal Red Japanese Painted Fern	#1 Cont.	350 mm	22	
	BM	Brunnera macrophylla / Siberian Bugloss	#1 Cont.	300 mm	164	
	CL	Chasmanthium latifolium / Northern Sea Oats	#1 Cont.	300 mm	188	
	DT	Deschampsia cespitosa / Tufted Hair Grass	#1 Cont.	450 mm	256	
	ER	Epimedium x rubrum / Red Barrenwort	#1 Cont.	250 mm	71	
	FV	Fragaria virginiana / Wild Strawberry	10cm	200 mm	38	
	GO	Galium odoratum / Sweet Woodruff	10cm	250 mm	99	
	GR	Geranium x 'Rozanne' / Rozanne Cranesbill	#1 Cont.	400 mm	290	
	HA	Hakonechloa macra 'All Gold' / All Gold Japanese Forest Grass	#1 Cont.	400 mm	228	
	HO	Heuchera x 'Obsidian' / Obsidian Coral Bells	#1 Cont.	350 mm	56	
	HE	Hosta x 'Empress Wu' / Empress Wu Hosta	#1 Cont.	1,000 mm	4	
	MS	Matteuccia struthiopteris / Ostrich Fern	#1 Cont.	500 mm	22	
	MV	Mertensia virginica / Virginia Bluebells	#1 Cont.	300 mm	50	
	NP	Nepeta x faassenii 'Pursian Blue' / Pursian Blue Catmint	50 count plug	300 mm	24	
	PV	Panicum virgatum / Switch Grass	20L	600 mm	50	
	PH	Penstemon digitalis 'Husker Red' / Husker Red Beardtongue	#2 cont.	500 mm	13	
	PS	Phlox subulata 'Snowflake' / Snowflake Creeping Phlox	#1 Cont.	300 mm	133	
	SH	Salvia nemorosa 'Blue Hill' / Blue Hill Meadow Sage	#1 Cont.	350 mm	165	
	SC	Symphyotrichum cordifolium / Heart-leaved Aster	50 count plug	500 mm	31	
	VI	Veronica spicata 'Icicle' / Icicle Spike Speedwell	#1 Cont.	300 mm	114	
GRASSES						
	CP	Carex pensylvanica / Pennsylvania Sedge	Plug	250 mm	38	

O2

366 ADELAIDE STREET EAST . SUITE 437
TORONTO, M5A 3X9, ONTARIO, CANADA
T 416.340.8100 F 416.340.8300 www.o2design.com

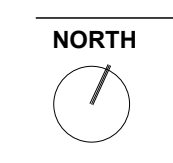
PROJECT
AMICA SENIOR LIVING
152 WILSON STREET
OAKVILLE, ON

FOR
AMICA/AMICO

PROJECT NUMBER
250607

APPLICATION NUMBER
XXXXXX

LEGEND



NOT FOR CONSTRUCTION

REVISIONS:	NO.	DESCRIPTION.	DATE.	BY.

1 ISSUED FOR SPA 1 17 SEPT, 2025 HP
DESIGNED BY: HP CHECKED BY: TG

DRAWING TITLE :

GROUND FLOOR
PLANTING SCHEDULE -
1:200

L3



PROJECT
AMICA SENIOR LIVING
152 WILSON STREET
 OAKVILLE, ON

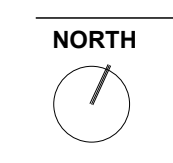
FOR
 AMICA/AMICO

PROJECT NUMBER
 250607

APPLICATION NUMBER
 XXXXXX

LEGEND

-  PROPOSED MULTI-STEM TREE
-  PROPOSED PLANTING
-  CONCRETE PAVING
-  WOOD DECKING
-  PROPOSED BENCH
-  INTENSIVE GREEN ROOF WITH METAL EDGER
-  SHRUB PLANTING IN 900MM HT. METAL PLANTERS



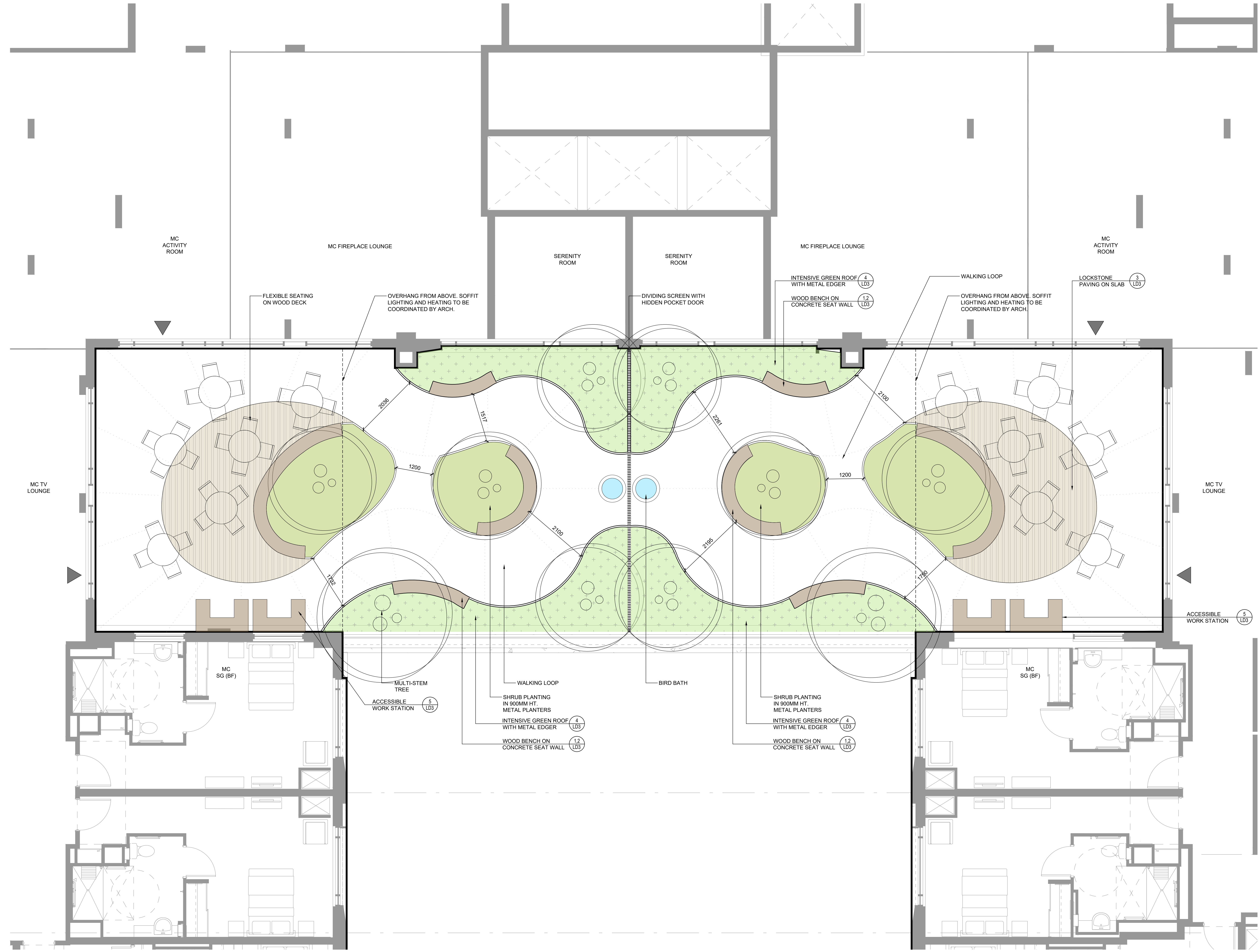
ACCESSIBLE WORK STATION (5) LD3

NOT FOR CONSTRUCTION

REVISIONS:	NO.	DESCRIPTION.	DATE.	BY.
	2	ISSUED FOR SPA 1	17 SEPT, 2025	HP
	1	ISSUED FOR PAC REVIEW	08 SEPT, 2025	HP

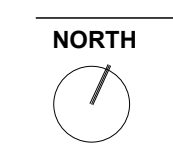
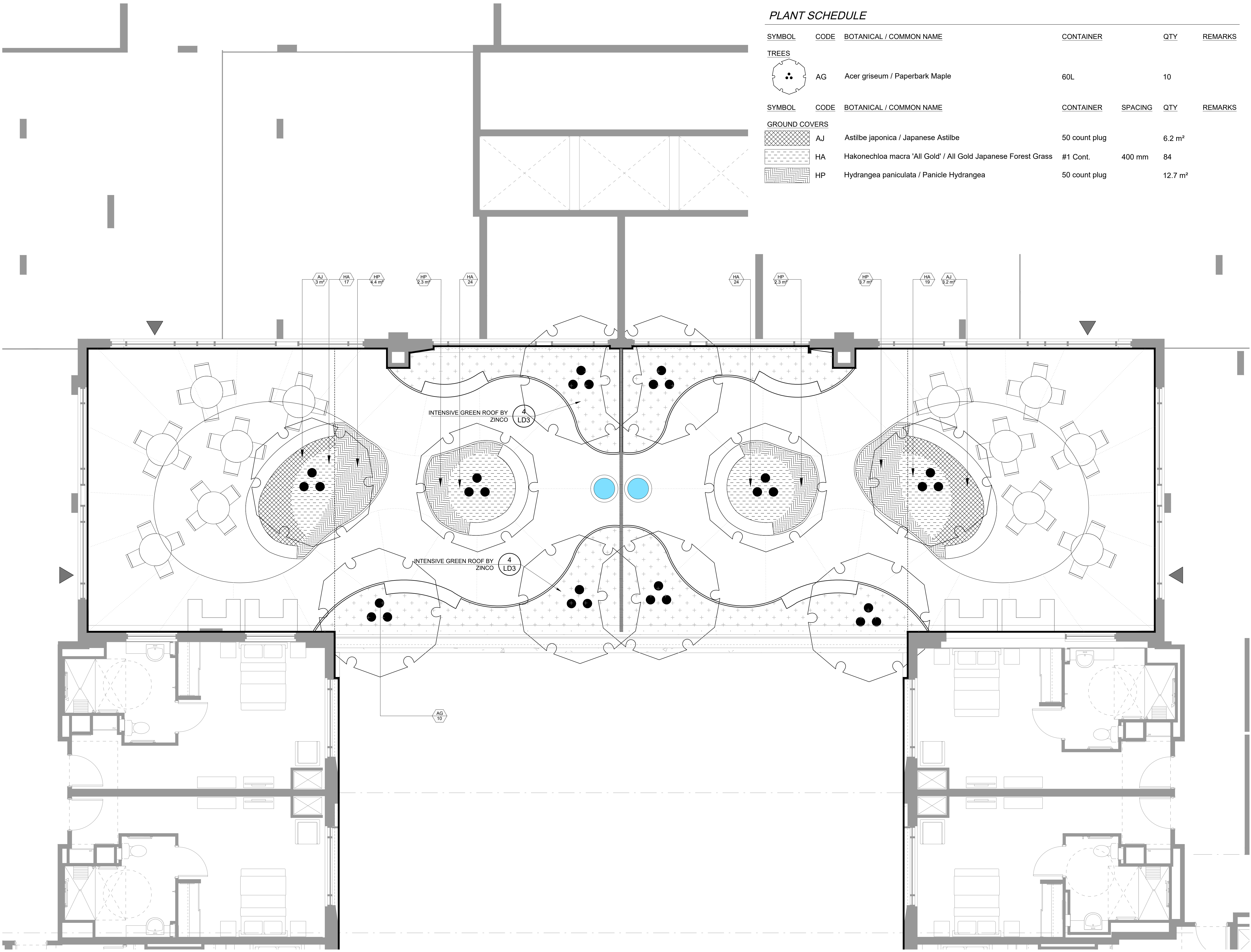
DESIGNED BY: **HP** CHECKED BY: **TG**

DRAWING TITLE:
 2ND FLOOR AMENITY
 TERRACE MASTERPLAN
 1:50



PLANT SCHEDULE

SYMBOL	CODE	BOTANICAL / COMMON NAME	CONTAINER	QTY	REMARKS
TREES					
	AG	Acer griseum / Paperbark Maple	60L	10	
GROUND COVERS					
	AJ	Astilbe japonica / Japanese Astilbe	50 count plug	6.2 m ²	
	HA	Hakonechloa macra 'All Gold' / All Gold Japanese Forest Grass	#1 Cont.	400 mm	84
	HP	Hydrangea paniculata / Panicle Hydrangea	50 count plug	12.7 m ²	



NOT FOR CONSTRUCTION

REVISIONS:	NO.	DESCRIPTION.	DATE.	BY.
1	ISSUED FOR SPA 1		17 SEPT, 2025	HP

DESIGNED BY: **HP** CHECKED BY: **TG**

DRAWING TITLE:
**2ND FLOOR AMENITY
 TERRACE PLANTING PLAN
 1:50**

L3B

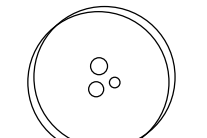
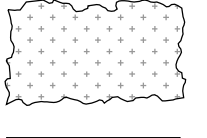

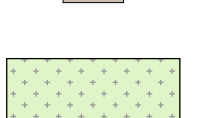


PROJECT
AMICA SENIOR LIVING
152 WILSON STREET
 OAKVILLE, ON

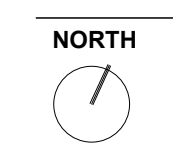
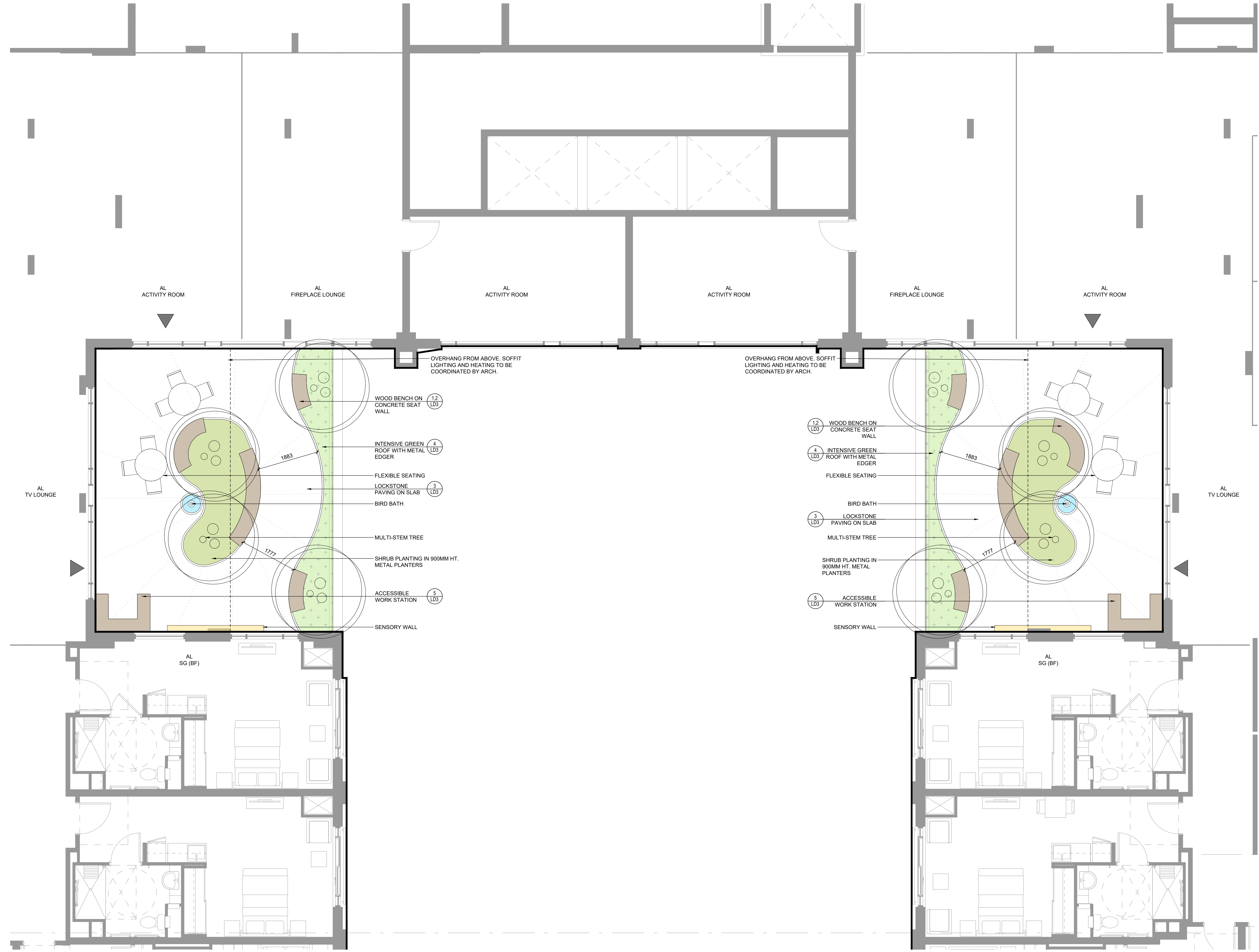
FOR
 AMICA/AMICO

PROJECT NUMBER
 250607

APPLICATION NUMBER
 XXXXXX

LEGEND

-  PROPOSED MULTI-STEM TREE
-  PROPOSED PLANTING
-  CONCRETE PAVING
-  PROPOSED BENCH
-  INTENSIVE GREEN ROOF WITH METAL EDGER
-  SHRUB PLANTING IN 900MM HT. METAL PLANTERS



NOT FOR CONSTRUCTION

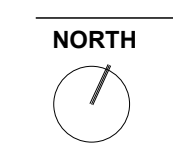
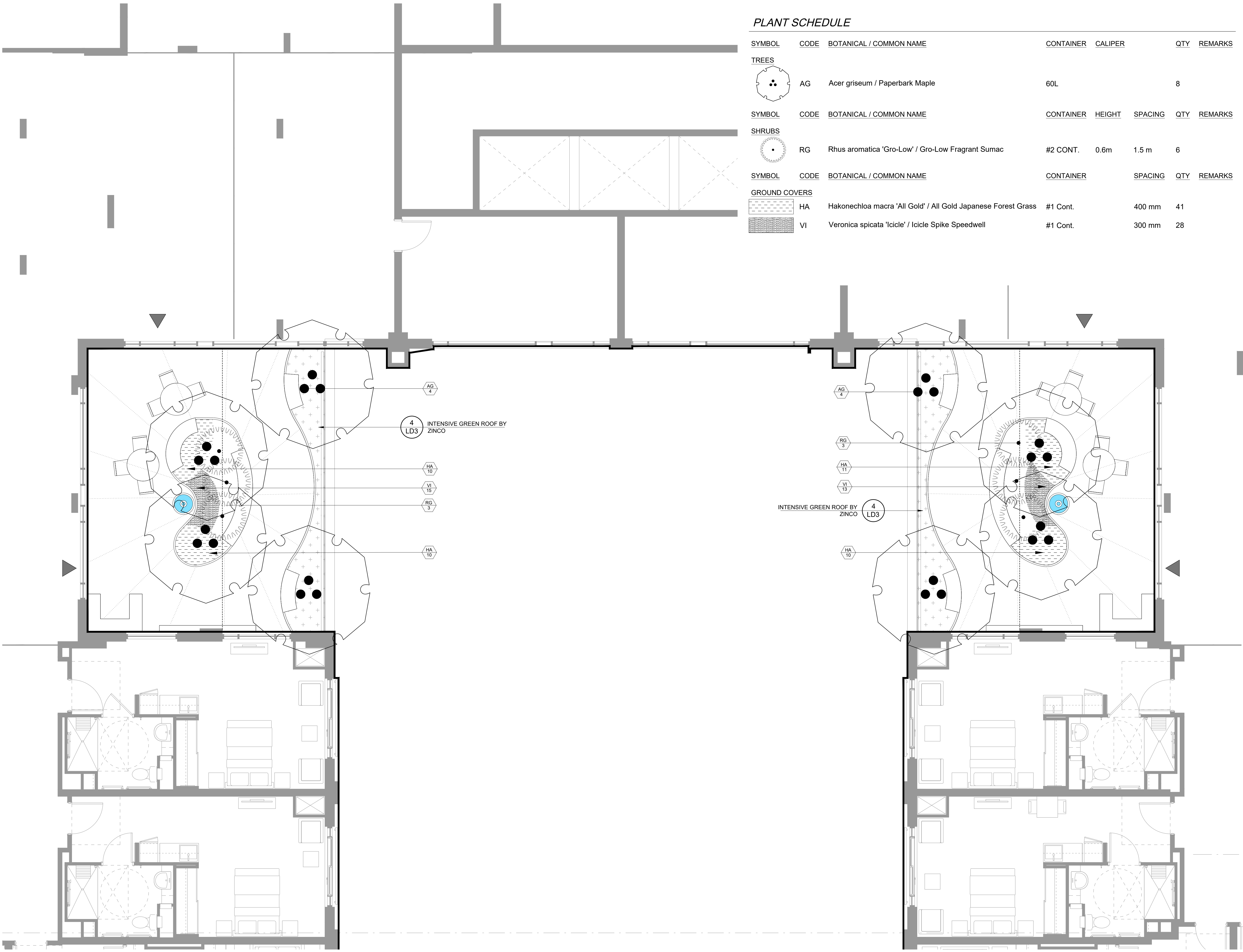
REVISIONS:	NO.	DESCRIPTION.	DATE.	BY.
	2	ISSUED FOR SPA 1	17 SEPT, 2025	HP
	1	ISSUED FOR PAC REVIEW	08 SEPT, 2025	HP

DESIGNED BY: **HP** CHECKED BY: **TG**

DRAWING TITLE:
 3RD FLOOR AMENITY
 TERRACE MASTERPLAN
 1:50

PLANT SCHEDULE

SYMBOL	CODE	BOTANICAL / COMMON NAME	CONTAINER	CALIPER	QTY	REMARKS
TREES						
	AG	Acer griseum / Paperbark Maple	60L		8	
SHRUBS						
	RG	Rhus aromatica 'Gro-Low' / Gro-Low Fragrant Sumac	#2 CONT.	0.6m	1.5 m	6
GROUND COVERS						
	HA	Hakonechloa macra 'All Gold' / All Gold Japanese Forest Grass	#1 Cont.		400 mm	41
	VI	Veronica spicata 'Icicle' / Icicle Spike Speedwell	#1 Cont.		300 mm	28



NOT FOR CONSTRUCTION

REVISIONS:

NO.	DESCRIPTION	DATE	BY
1	ISSUED FOR SPA 1	17 SEPT, 2025	HP

DESIGNED BY: **HP** CHECKED BY: **TG**

DRAWING TITLE:
**3RD FLOOR AMENITY
 TERRACE PLANTING PLAN
 1:50**

L3C

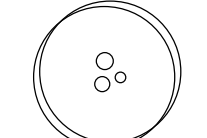

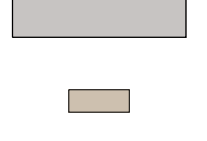


PROJECT
AMICA SENIOR LIVING
152 WILSON STREET
 OAKVILLE, ON

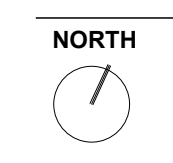
FOR
 AMICA/AMICO

PROJECT NUMBER
 250607

APPLICATION NUMBER
 XXXXXX

LEGEND

-  PROPOSED MULTI-STEM TREE
-  PROPOSED PLANTING
-  CONCRETE PAVING
-  PROPOSED BENCH
-  INTENSIVE GREEN ROOF WITH METAL EDGER



NOT FOR CONSTRUCTION

REVISIONS:	NO.	DESCRIPTION.	DATE.	BY.
	2	ISSUED FOR SPA 1	17 SEPT, 2025	HP
	1	ISSUED FOR PAC REVIEW	08 SEPT, 2025	HP

DESIGNED BY: **HP** CHECKED BY: **TG**

DRAWING TITLE:
**4TH FLOOR AMENITY
 TERRACE MASTERPLAN
 1:50**

PROJECT
AMICA SENIOR LIVING
152 WILSON STREET
OAKVILLE, ON

FOR
AMICA/AMICO

PROJECT NUMBER
250607

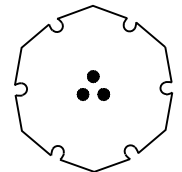
APPLICATION NUMBER
XXXXXX

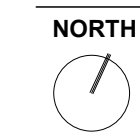
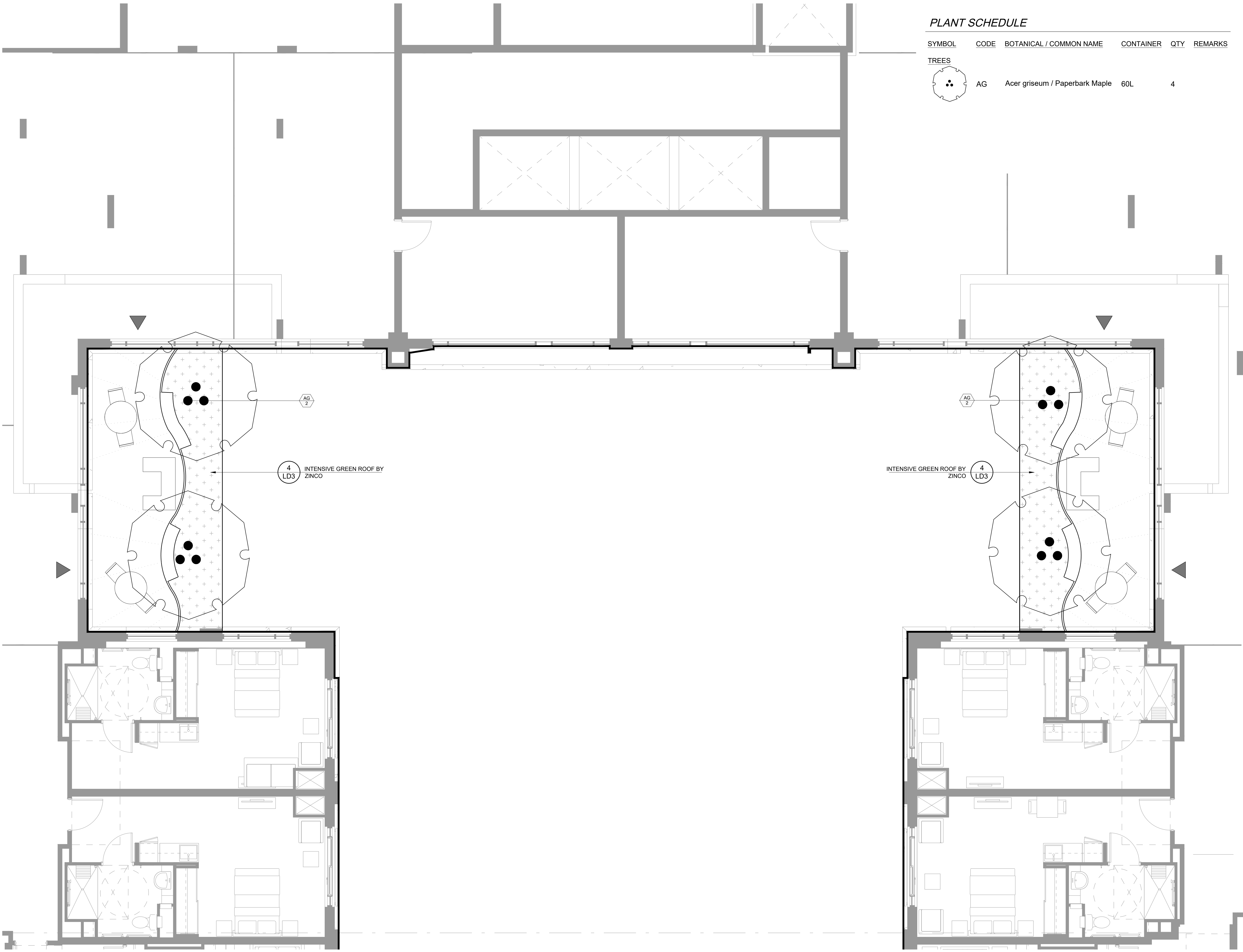
LEGEND

PLANT SCHEDULE

SYMBOL	CODE	BOTANICAL / COMMON NAME	CONTAINER	QTY	REMARKS
--------	------	-------------------------	-----------	-----	---------

TREES

	AG	Acer griseum / Paperbark Maple	60L	4	
---	----	--------------------------------	-----	---	--



NOT FOR CONSTRUCTION

REVISIONS:	NO.	DESCRIPTION.	DATE.	BY.

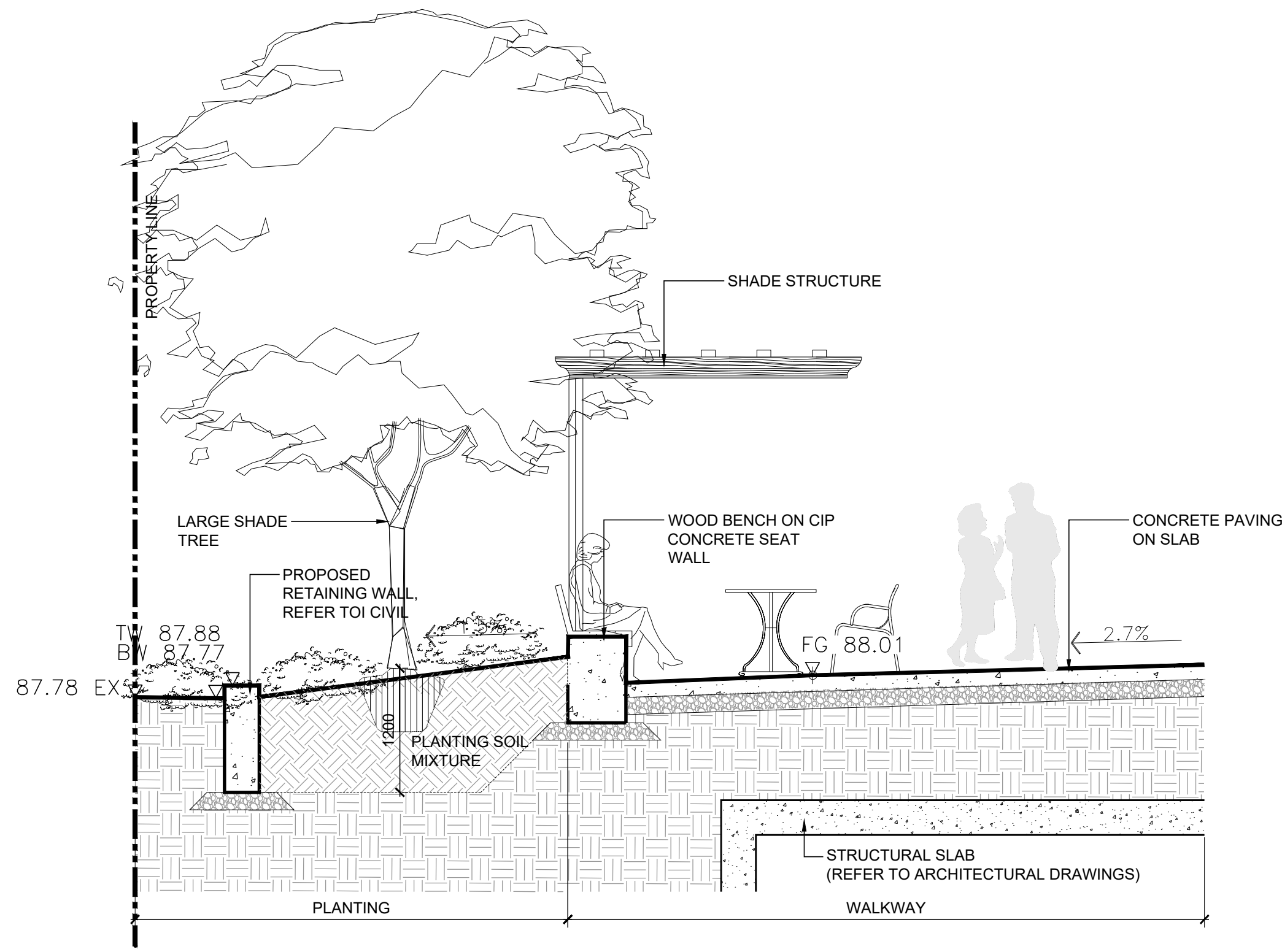
1	ISSUED FOR SPA 1	17 SEPT, 2025	HP
---	------------------	---------------	----

DESIGNED BY:	CHECKED BY:
HP	TG

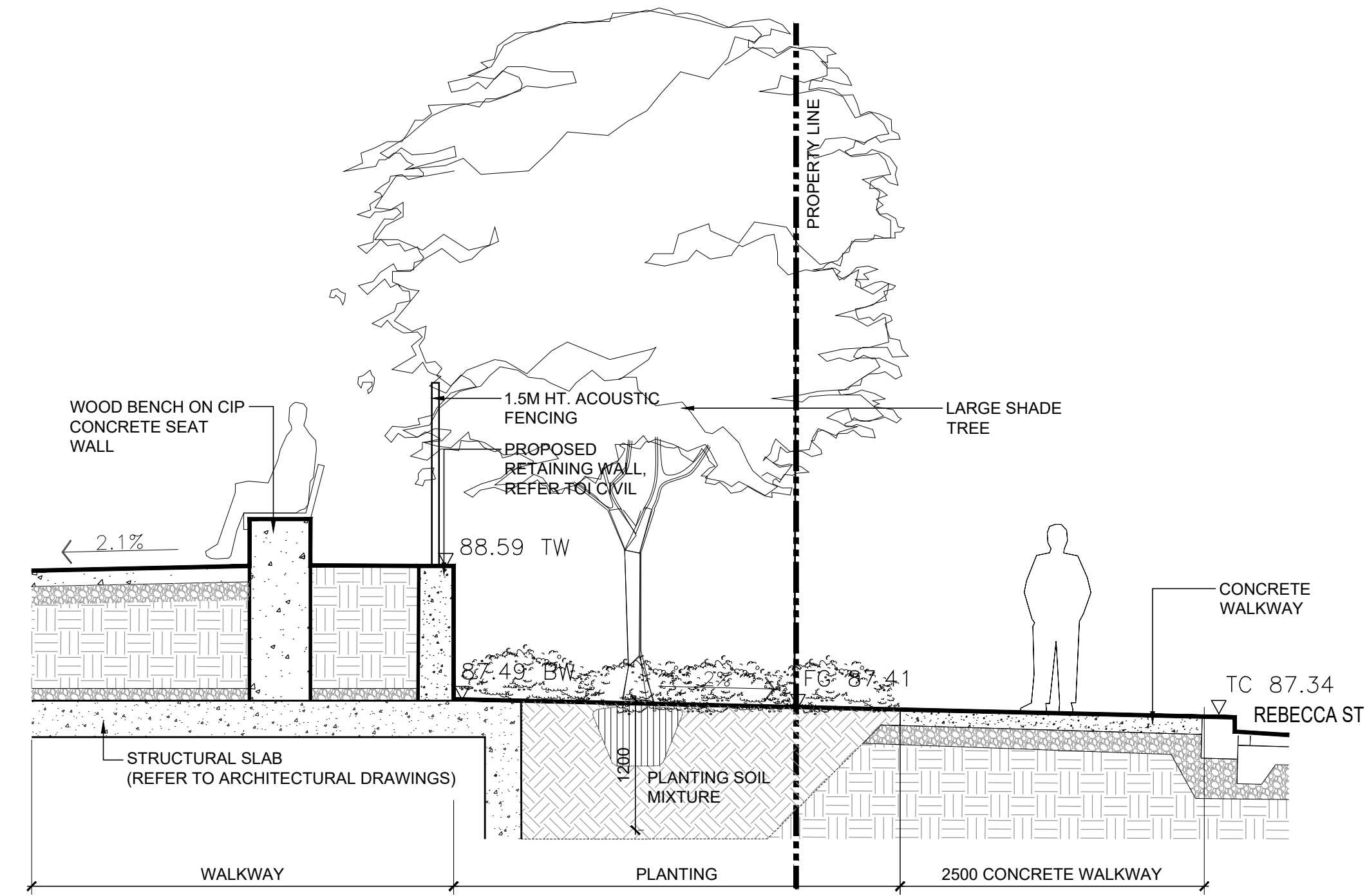
DRAWING TITLE :

**4TH FLOOR AMENITY
TERRACE PLANTING PLAN**
1:50

L3D



1 SECTION THROUGH NW COURTYARD
 N.T.S.



2 SECTION THROUGH SE COURTYARD
 N.T.S.

NORTH



NOT FOR CONSTRUCTION

REVISIONS:	NO.	DESCRIPTION.	DATE.	BY.
1	ISSUED FOR SPA 1		17 SEPT, 2025	HP
DESIGNED BY:	HP	CHECKED BY:	TG	

DRAWING TITLE :

SECTIONS
 1:50