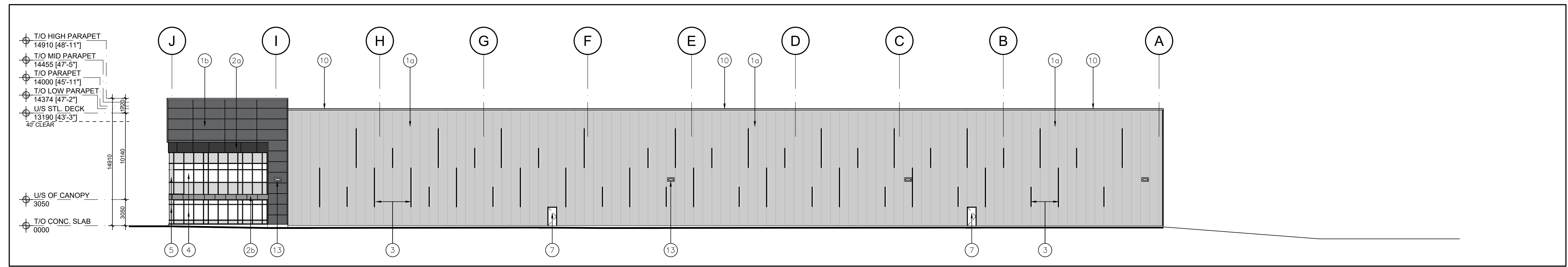
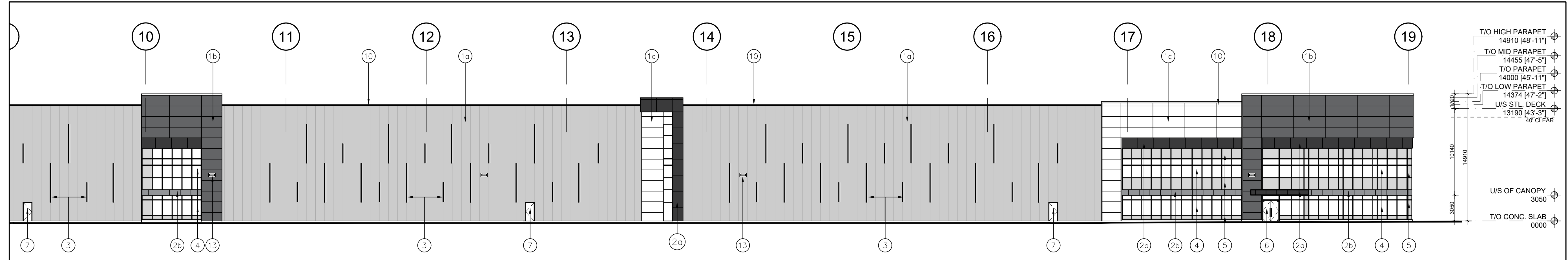


No.	ISSUED	DATE
1	ISSUED FOR COORDINATION	MAR. 30 2021
2	ISSUED FOR SPA	APR. 9 2021

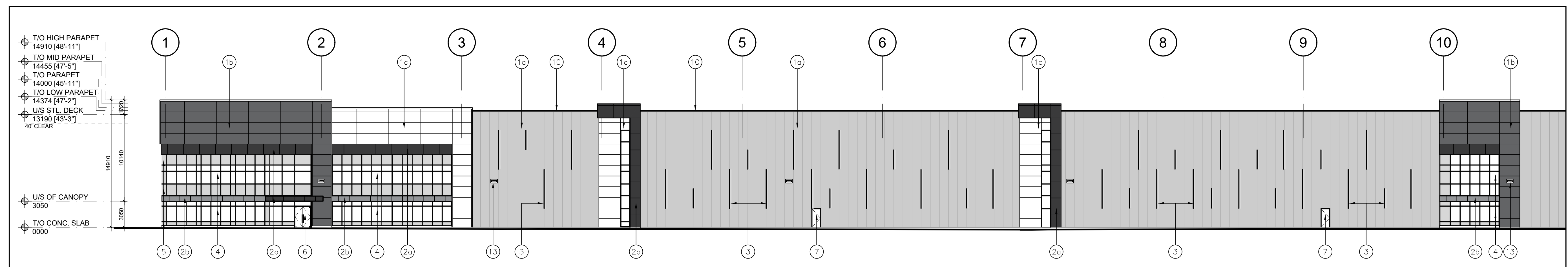
- LEGEND**
- 10 INSULATED METAL PANELS BY KINGSPAN KS SERIES WITH SHADOWLINE FINISH OR APPROVED EQUAL. COLOUR TO BE GREY. SAMPLE TO BE SUBMITTED FOR ARCHITECT'S APPROVAL.
 - 1b INSULATED METAL PANELS BY KINGSPAN KS SERIES WITH SHADOWLINE FINISH OR APPROVED EQUAL. COLOUR TO BE DARK GREY. SAMPLE TO BE SUBMITTED FOR ARCHITECT'S APPROVAL.
 - 1c INSULATED METAL PANELS BY KINGSPAN KS SERIES WITH SHADOWLINE FINISH OR APPROVED EQUAL. COLOUR TO BE WHITE. SAMPLE TO BE SUBMITTED FOR ARCHITECT'S APPROVAL.
 - 2a APOLIC COMPOSITE METAL PANELS COLOUR: CHARCOAL
 - 2b APOLIC COMPOSITE METAL PANELS COLOUR: LIGHT GREY
 - 3 PREFINISHED METAL "FIN" (TWO LENGTHS -> 2250 or 4540mm). COLOUR TO BE CHARCOAL GREY TO MATCH METAL PANELS.
 - 4 WINDOW- THERMAL DOUBLE GLAZING (GREY TINT) IN PREFINISHED ALUMINUM CURTAIN WALL FRAMES. COLOUR OF CURTAIN WALL CAPS: CHARCOAL ANODIZED ALUMINUM, C/W BIRD-FRIENDLY VISUAL MARKERS
 - 5 SPANDREL GLAZING IN PREFINISHED ALUMINUM CURTAIN WALL FRAMES. COLOUR OF SPANDREL: DARY GREY TINT; COLOUR OF CURTAIN WALL CAPS: CHARCOAL ANODIZED ALUMINUM
 - 6 CLEAR TEMPERED THERMAL GLASS AND ALUMINUM DOOR(S). COLOUR OF ALUMINUM TO MATCH CURTAIN WALL CAPS.
 - 7 MAN DOOR - INSULATED HOLLOW METAL DOOR PAINT COLOUR: TO MATCH ADJACENT METAL PANEL
 - 8 INSULATED HOLLOW METAL OVERHEAD DOOR C/W TEMPERED GLASS VIEW WINDOW. COLOUR TO BE GREY TO MATCH INSULATED METAL PANELS. C/W DOCK SEAL, DOCK LEVELLER AND DOCK BUMPERS.
 - 9 INSULATED HOLLOW METAL OVERHEAD DOOR C/W TEMPERED GLASS VIEW WINDOW. COLOUR TO BE GREY TO MATCH INSULATED METAL PANELS.
 - 10 PREFINISHED METAL CAP FLASHING. COLOUR TO MATCH METAL PANELS BELOW.
 - 11 STEEL GRATE EXTERIOR STAIR. PRIMED & MARINE OIL BASE PAINTED GREY.
 - 12 TINTED THERMAL GLAZING IN ALUMINUM CURTAIN WALL FRAMES. COLOUR OF GLASS AND FRAMES TO FUTURE SELECTION BY THE ARCHITECT. CAPS TO BE 50.8mm WIDE.
 - 13 LIGHTING - WALL PAC REFER TO ELECTRICAL DWGS.



3 North Elevation
A-3.0 Scale = 1:250



2 Partial East Elevation
A-3.0 Scale = 1:250



1 Partial East Elevation
A-3.0 Scale = 1:250

No.	REVISION	DATE
-----	----------	------



30 Great Gulf Drive, Unit 20 | Concord ON | L4K 0K7
T: 905.660.0722 | www.baldassarra.ca



OWNERS INFORMATION:

772 Winston Churchill Blvd.

Oakville, Ontario

ELEVATIONS
Building A

DATE:	DRAWN BY:	CHECKED:	SCALE:
MAR. 2021	HP		AS NOTED

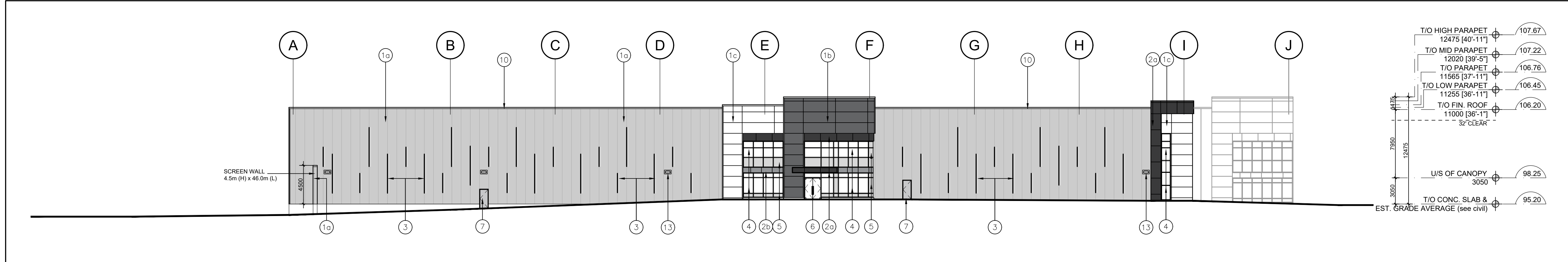
PROJECT No. 21-05 A DRAWING No. A-3.0

\\VALDUTA\Drawings\2105 772 Winston Churchill Blvd\Drawings\02 General Drawings\03 Elevations\A-3.0.dwg

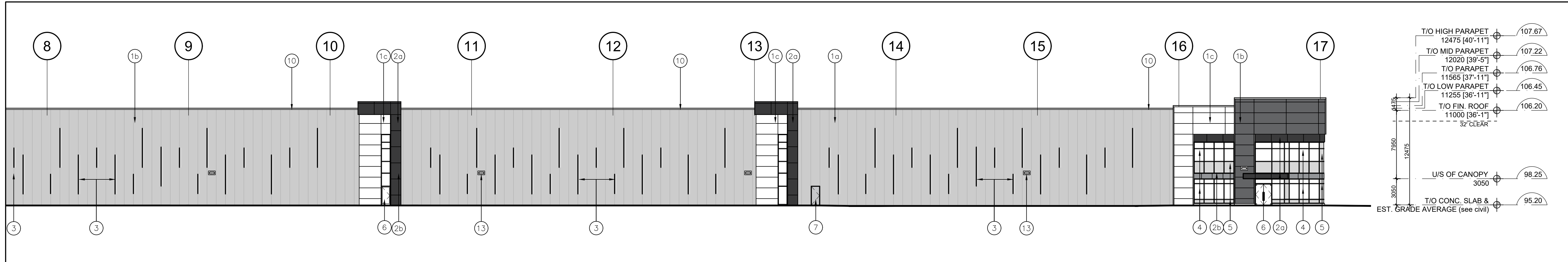
No.	ISSUED	DATE
1	ISSUED FOR COORDINATION	MAR. 30 2021
2	ISSUED FOR SPA	APR. 9 2021

LEGEND

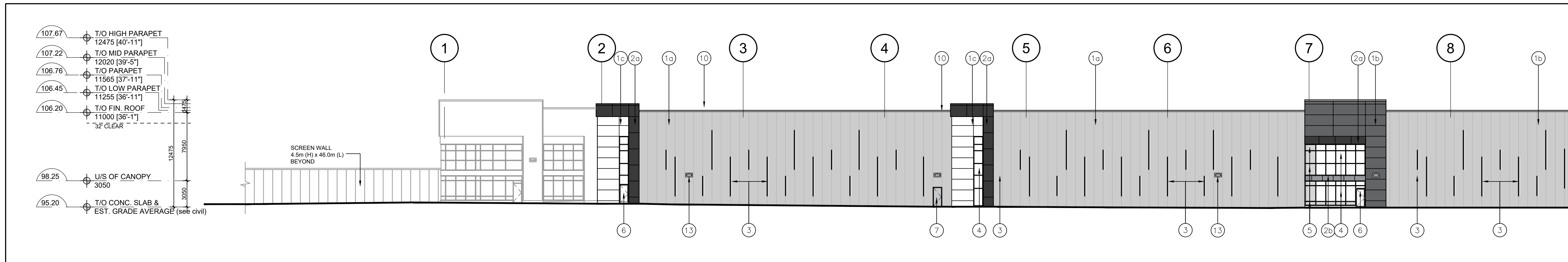
- ①a INSULATED METAL PANELS BY KINGSPAN KS SERIES WITH SHADOWLINE FINISH OR APPROVED EQUAL. COLOUR TO BE GREY. SAMPLE TO BE SUBMITTED FOR ARCHITECT'S APPROVAL.
- ①b INSULATED METAL PANELS BY KINGSPAN KS SERIES WITH SHADOWLINE FINISH OR APPROVED EQUAL. COLOUR TO BE DARK GREY. SAMPLE TO BE SUBMITTED FOR ARCHITECT'S APPROVAL.
- ①c INSULATED METAL PANELS BY KINGSPAN KS SERIES WITH SHADOWLINE FINISH OR APPROVED EQUAL. COLOUR TO BE WHITE. SAMPLE TO BE SUBMITTED FOR ARCHITECT'S APPROVAL.
- ②a APOLIC COMPOSITE METAL PANELS COLOUR: CHARCOAL
- ②b APOLIC COMPOSITE METAL PANELS COLOUR: LIGHT GREY
- ③ PREFINISHED METAL "FIN" (TWO LENGTHS -> 2250 or 4540mm). COLOUR TO BE CHARCOAL GREY TO MATCH METAL PANELS.
- ④ WINDOW- THERMAL DOUBLE GLAZING (GREY TINT) IN PREFINISHED ALUMINUM CURTAIN WALL FRAMES. COLOUR OF CURTAIN WALL CAPS: CHARCOAL ANODIZED ALUMINUM, C/W BIRD-FRIENDLY VISUAL MARKERS
- ⑤ SPANDREL GLAZING IN PREFINISHED ALUMINUM CURTAIN WALL FRAMES. COLOUR OF SPANDREL: DARY GREY TINT; COLOUR OF CURTAIN WALL CAPS: CHARCOAL ANODIZED ALUMINUM
- ⑥ CLEAR TEMPERED THERMAL GLASS AND ALUMINUM DOOR(S). COLOUR OF ALUMINUM TO MATCH CURTAIN WALL CAPS.
- ⑦ MAN DOOR - INSULATED HOLLOW METAL DOOR PAINT COLOUR: TO MATCH ADJACENT METAL PANEL
- ⑧ INSULATED HOLLOW METAL OVERHEAD DOOR C/W TEMPERED GLASS VIEW WINDOW. COLOUR TO BE GREY TO MATCH INSULATED METAL PANELS. C/W DOCK SEAL, DOCK LEVELLER AND DOCK BUMPERS.
- ⑨ INSULATED HOLLOW METAL OVERHEAD DOOR C/W TEMPERED GLASS VIEW WINDOW. COLOUR TO BE GREY TO MATCH INSULATED METAL PANELS.
- ⑩ PREFINISHED METAL CAP FLASHING. COLOUR TO MATCH METAL PANELS BELOW.
- ⑪ STEEL GRATE EXTERIOR STAIR. PRIMED & MARINE OIL BASE PAINTED GREY.
- ⑫ TINTED THERMAL GLAZING IN ALUMINUM CURTAIN WALL FRAMES. COLOUR OF GLASS AND FRAMES TO FUTURE SELECTION BY THE ARCHITECT. CAPS TO BE 50.8mm WIDE.
- ⑬ LIGHTING - WALL PAC REFER TO ELECTRICAL DWGS.



③ North Elevation
A-3.0 Scale = 1:250



② Partial West Elevation
A-3.0 Scale = 1:250



① Partial West Elevation
A-3.0 Scale = 1:250

No.	REVISION	DATE
-----	----------	------

BALDASSARRA
Architects Inc.

30 Great Gulf Drive, Unit 20 | Concord ON | L4K 0K7
T. 905.660.0722 | www.baldassarra.ca



OWNERS INFORMATION:

772 Winston Churchill Blvd.

Oakville, Ontario

ELEVATIONS
Building B

DATE:	DRAWN BY:	CHECKED:	SCALE:
MAR. 2021	HP		AS NOTED

PROJECT No.	DRAWING No.
21-05 B	A-3.0

\\BALDASSARRA\Drawings\2105 772 Winston Churchill Blvd\Drawings\2105 B A-3.0.dwg

