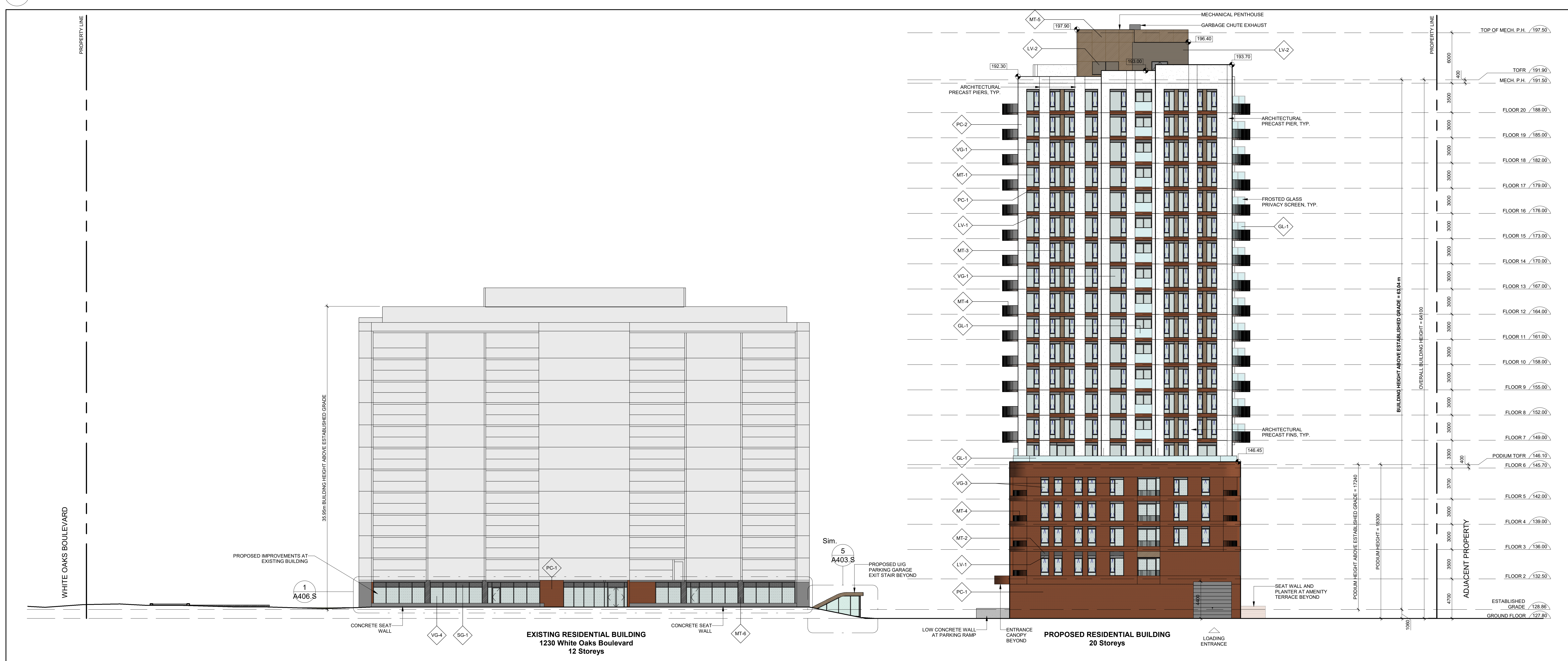


1 South Elevation
A401.S



2 North Elevation
A401.S

MATERIAL LEGEND:

- EXPOSED ARCHITECTURAL CONCRETE
- GLASS RAILING AND PRIVACY SCREENS - FROSTED
- ARCHITECTURAL LOUVRE - DARK GREY
- MECHANICAL LOUVRE - BRONZE
- DOUBLE GLAZED ALUMINUM WINDOW SYSTEM - DARK GREY
- WINDOW SYSTEM METAL SPANDREL PANEL - BRONZE
- BALCONY AND TERRACE PICKET RAILING, PRIVACY SCREEN SUPPORT POSTS - DARK GREY
- ALUMINUM CLADDING SYSTEM - BRONZE
- ALUMINUM CLADDING SYSTEM - DARK GREY
- BRICK EMBEDDED IN PRECAST CONCRETE - RED
- PRECAST CONCRETE - WHITE
- WINDOW SYSTEM SHADOW BOX - DARK GREY, BIRD FRIENDLY
- WINDOW WALL VISION GLASS - CLEAR
- CURTAIN WALL VISION GLASS - CLEAR
- WINDOW WALL VISION GLASS - BIRD FRIENDLY
- CURTAIN WALL VISION GLASS - BIRD FRIENDLY
- WINDOW WALL PATTERNED GLASS

Date	No.	Description
REVISION RECORD		
2023-01-31		Re-Issued for Site Plan Approval
2022-05-24		Re-Issued for Site Plan Approval
2021-08-13		ISSUED FOR SITE PLAN APPROVAL
2020-10-14		RE-ISSUED FOR REZONING
2019-10-28		ISSUED FOR REZONING
ISSUE RECORD		



BDP. Quadrangle

Quadrangle Architects Limited
The Well, 8 Spadina Avenue, Suite 2100, Toronto, ON M5V 0S8
+1 416 598 1240 www.bdpquadrangle.com

1226-1230 White Oaks Boulevard
and 350 Lynnwood Drive
Oakville, ON

for
Kamato Holdings Limited

17034 1:200 MP HT
PROJECT SCALE DRAWN REVIEWED

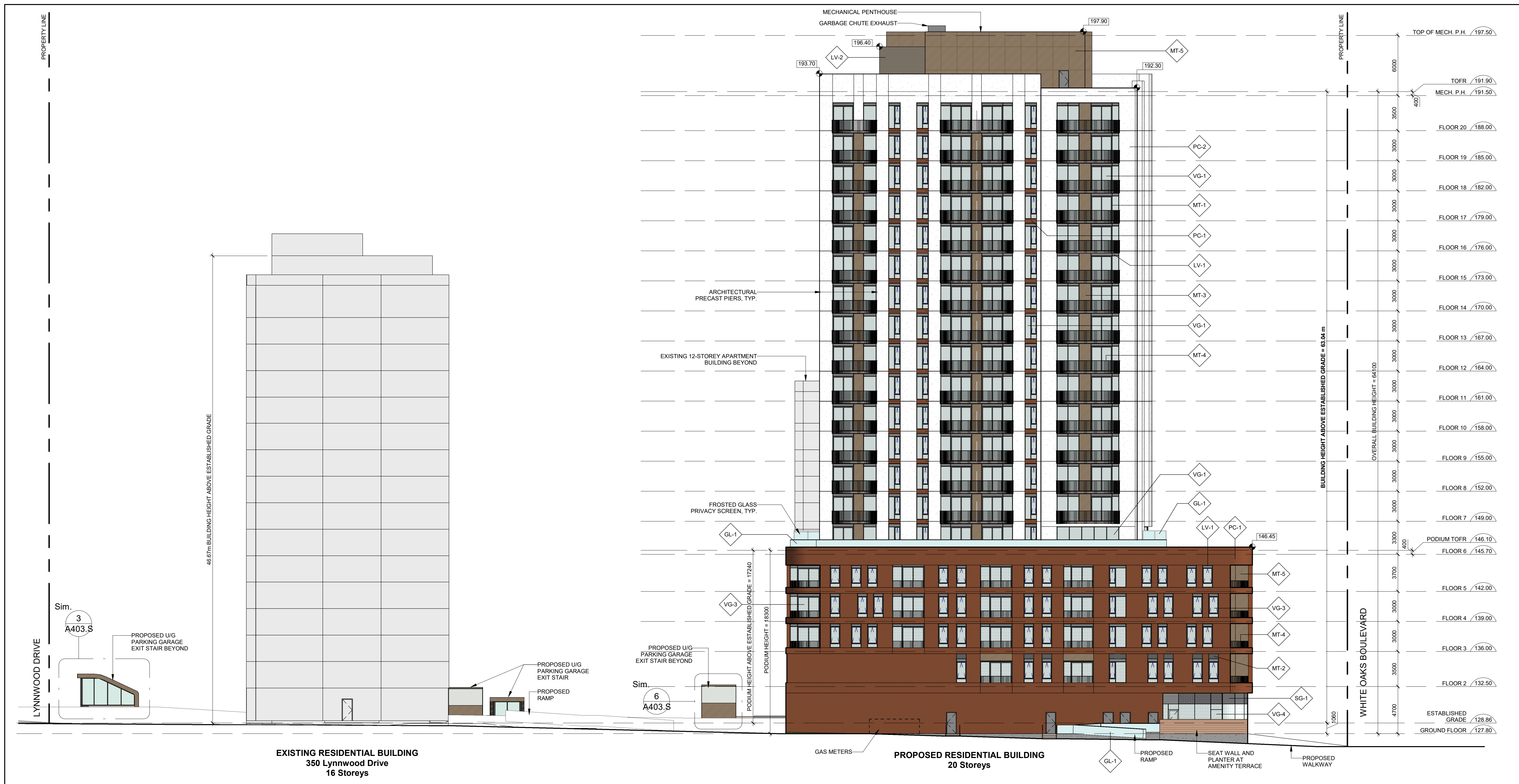
South and North Building
Elevations

A401.S

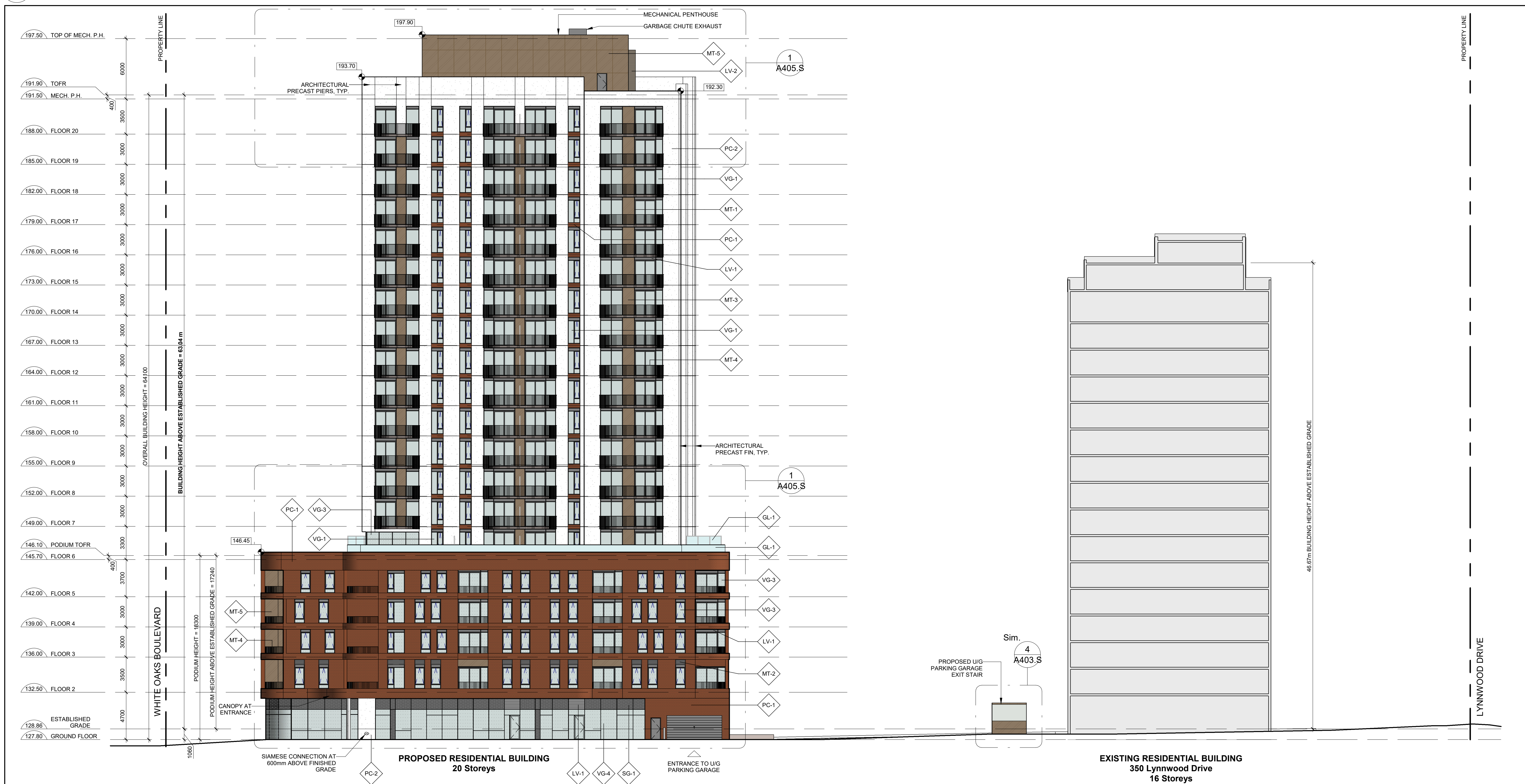
Note: This drawing is the property of the Architect and may not be reproduced or used without the expressed consent of the Architect. The Contractor is responsible for checking and verifying all notes and dimensions and shall report all discrepancies to the Architect and obtain verification prior to commencing work.

C:\Users\m1427\Documents\BDP_AR_1714_1230 White Oaks Blvd_SPA_R002_A401.S.dwg

20230217 2:40 PM



1 West Elevation



2 East Elevation

MATERIAL LEGEND:

- EXPOSED ARCHITECTURAL CONCRETE
- GLASS RAILING AND PRIVACY SCREENS - FROSTED
- ARCHITECTURAL LOUVRE - DARK GREY
- MECHANICAL LOUVRE - BRONZE
- DOUBLE GLAZED ALUMINUM WINDOW SYSTEM - DARK GREY
- WINDOW SYSTEM METAL SPANDREL PANEL - DARK GREY
- BALCONY AND TERRACE PICKET RAILING, PRIVACY SCREEN SUPPORT POSTS - DARK GREY
- ALUMINUM CLADDING SYSTEM - BRONZE
- BRICK EMBEDDED IN PRECAST CONCRETE - RED
- PRECAST CONCRETE - WHITE
- WINDOW SYSTEM SHADOW BOX - DARK GREY, BIRD FRIENDLY
- WINDOW WALL VISION GLASS - CLEAR
- CURTAIN WALL VISION GLASS - CLEAR
- WINDOW WALL VISION GLASS - BIRD FRIENDLY
- CURTAIN WALL VISION GLASS - BIRD FRIENDLY
- WINDOW WALL PATTERNED GLASS

REVISION RECORD

Date	No.	Description
2023-01-31	1	Re-issued for Site Plan Approval
2022-05-24	2	Re-issued for Site Plan Approval
2021-08-13	3	ISSUED FOR SITE PLAN APPROVAL
2020-10-14	4	RE-ISSUED FOR REZONING
2019-10-28	5	ISSUED FOR REZONING

ISSUE RECORD



BDP. Quadrangle

Quadrangle Architects Limited
The Wood, 8 Spadina Avenue, Suite 2100, Toronto, ON M5V 0S9
416.598.1240 www.bdpquadrangle.com

1226-1230 White Oaks Boulevard
and 350 Lynnwood Drive
Oakville, ON

for
Kamoto Holdings Limited

17034 1:200 MP HT
PROJECT SCALE DRAWN REVIEWED

East and West Building
Elevations

A402.S

Note: This drawing is the property of the Architect and may not be reproduced or used without the expressed consent of the Architect. The Contractor is responsible for checking and verifying all notes and dimensions and shall report all discrepancies to the Architect and obtain verification prior to commencing work.

C:\Users\mrc27\Documents\BDP_AR_1714_1230 White Oaks Blvd_BPA_R002_A402.S.rvt

20230212.24.49 PM