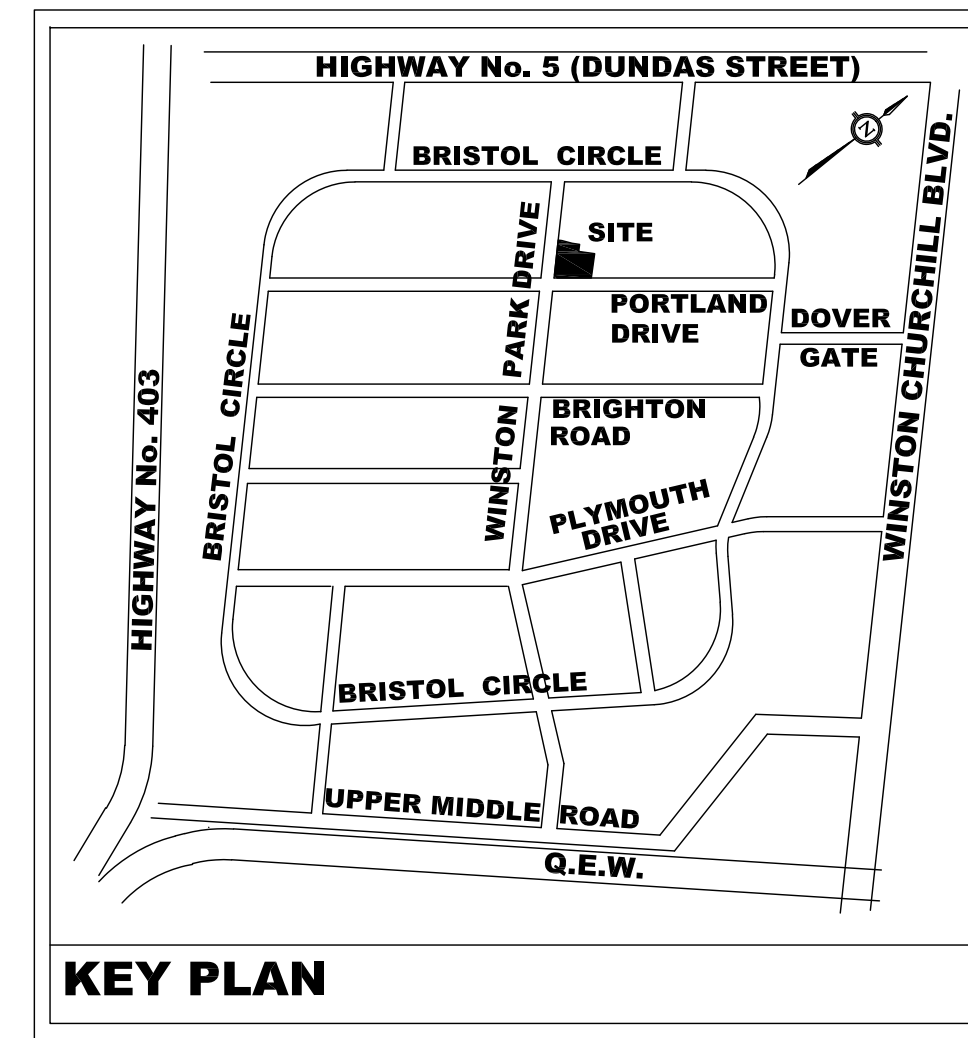


LEGEND  
ALL ITEMS ARE TO BE PROVIDED UNLESS OTHERWISE NOTED

- DECIDUOUS TREE
- CONIFEROUS TREE
- CONTINUOUS SHRUB BED
- SOD
- CONCRETE PAVING
- BIKE RING QTY.-2



GENERAL NOTES

1. Drawing is in metric scale. Dimensions under 1000 mm are shown as whole number.
2. No extra will be allowed for discrepancies between the drawings and actual site conditions unless reported in writing prior to commencement of work.
3. Do not leave any holes open overnight.
4. Make good all damage resulting from the work at no extra cost.
5. Keep area outside construction zone clean and usable by others at all times.
6. No stockpile is allowed on site without Owner's approval and direction.
7. Contractor is to submit samples of all proposed materials in this contract for approval prior to placing orders.
8. Contractor to request stake out and verify locations for all utilities prior to any construction, and report all conflicts to the Landscape Architects in writing. Contractor to obtain written instructions prior to starting work.
9. This drawing to be read in conjunction with Architect's site plan and engineering drawings.
10. All shrubs and coniferous planting to be in continuous beds. All planting to meet municipality's specifications.
11. Contractor to layout all landscape elements, and confirm locations with the Landscape Architect prior to proceeding.
12. Landscape contractor must always follow the approved engineering grading plans. Report any discrepancies to landscape architect and engineer.
13. Master plant list, all plant material to be clay grown stock. Contractor to confirm that the plant quantities shown on the plant list conform to the landscape Drawings. Landscape drawings supersede the plant list totals. Any discrepancies not reported shall be the responsibility of the landscape contractor.
14. All shrubs to be fibre pot container stock. All trees to be string ball stock.
15. Contractor shall provide marked-up redline plans showing as-built conditions to the Landscape Architect prior to obtaining substantial completion.
16. Contractor to install new sod and new topsoil as per specifications and general notes throughout the site as designed. New topsoil and sod shall extend through the municipal boulevard to the rear of the municipal curb.
17. All planting beds that are surrounded by sod should be cut and edged at a 45° angle, so there is a clear and well defined separation between the planting beds and sodded areas.
18. The Landscape Contractor is to inform STUDIO Ila/Terraplan 30 days prior to the start date of the landscape construction.
19. The Landscape Contractor must contact STUDIO Ila/Terraplan to confirm start date 7 days prior to commencing the landscape construction.
20. In the event that the soil being used on the site deviates from the soil specifications provided by STUDIO Ila/Terraplan, the Landscape Contractor must provide reputable soil analysis. Soil used on the site must be approved by Terraplan.
21. STUDIO Ila/Terraplan inspections are required prior to payment.

no.	revision	date	by
1	ISSUED FOR SPA	2022-11-15	TL

CONTRACTOR MUST VERIFY ALL DIMENSIONS ON THE JOB AND REPORT ANY DISCREPANCY TO THE LANDSCAPE ARCHITECT BEFORE PROCEEDING WITH THE WORK.  
ALL DRAWINGS AND SPECIFICATIONS ARE INSTRUMENTS OF SERVICE AND THE PROPERTY OF THE LANDSCAPE ARCHITECT WHICH MUST BE RETURNED AT THE COMPLETION OF THE WORK.  
ALL DRAWINGS TO BE USED FOR CONSTRUCTION ONLY WHEN SIGNED BY THE LANDSCAPE ARCHITECT.

signed \_\_\_\_\_ date \_\_\_\_\_



20 Champlain Blvd. Suite 102 - Toronto ON - M3H 2Z1 info@studioilsa.ca www.studioilsa.ca

Cambria Design Build Ltd.

1250 Journey's End Circle, Unit #1  
Newmarket, ON L3Y 0B9  
TEL 905-830-6026  
www.cambriadesign.ca

CLIENT

PREMIER POLY PRODUCTS  
INDUSTRIAL DEVELOPMENT  
OAKVILLE, ONTARIO

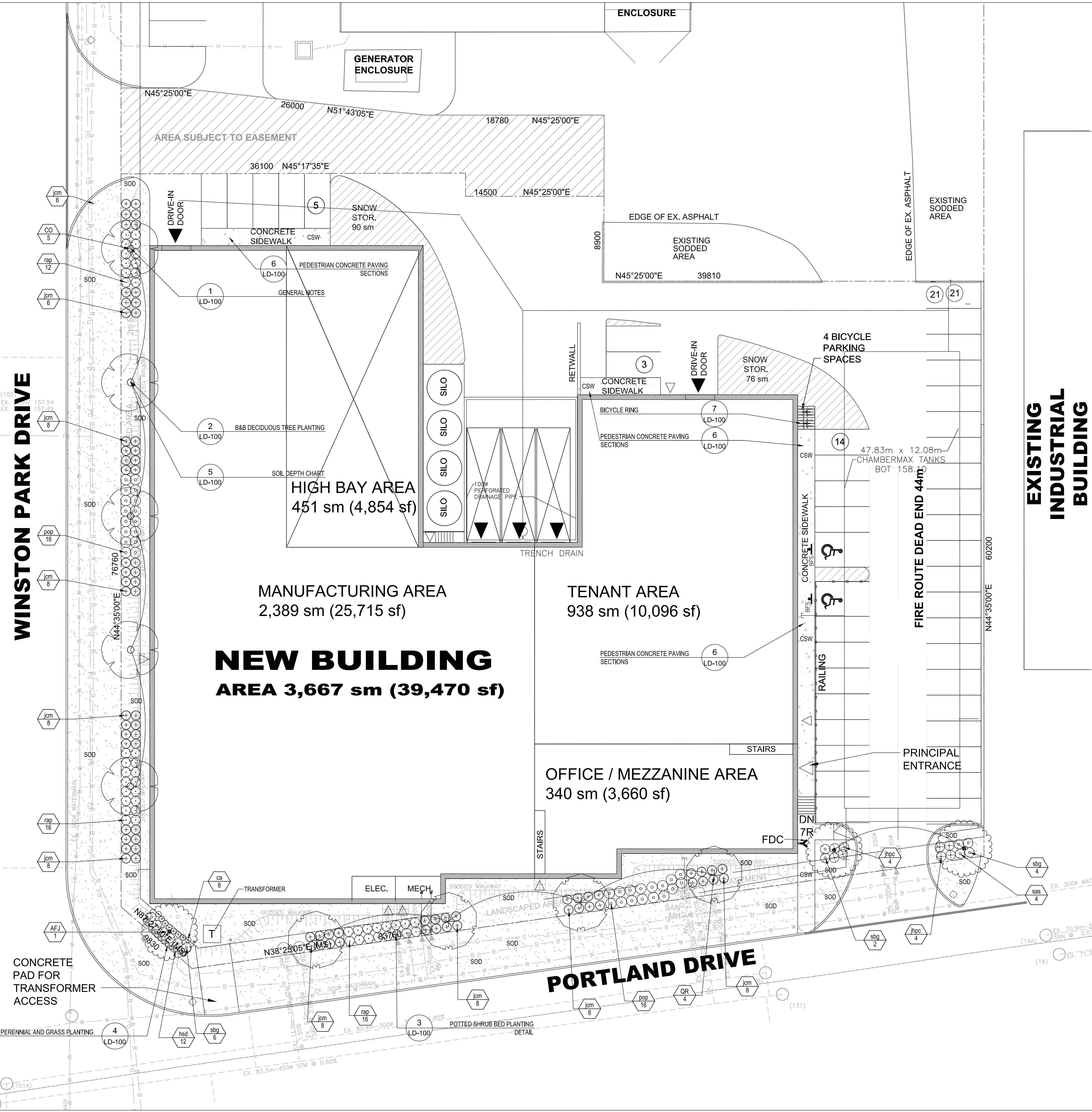
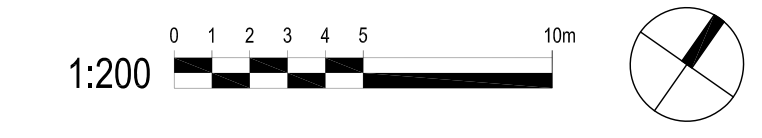
PROJECT  
LANDSCAPE PLAN

DRAWING  
DRAWN: TL  
CHECKED:  
SCALE: 1:200  
DATE: 2022-06-16  
PROJECT NO.: 22-143



SHEET NO.: LP-100

PLANT SCHEDULE SITE									
DECIDUOUS TREES	CODE	QTY	BOTANICAL NAME	COMMON NAME	CONT.	CAL.	HT.	REMARKS	
	AFJ	3	ACER FREEMANNI 'JEFFERSRED'	AUTUMN GLAZE MAPLE	B & B	70MM CAL			
	CO	5	CELTIS OCCIDENTALIS	COMMON HAWK BERRY	B & B	70MM CAL		NATIVE	
	QR	4	QUERCUS RUBRA	RED OAK	B & B	70MM CAL		NATIVE	
DECIDUOUS SHRUBS	CODE	QTY	BOTANICAL NAME	COMMON NAME	CONT.	HT.	SPR.	REMARKS	
	ppp	32	PHYSCOCARPUS OPULEFOLIUS	NINEBARK	CONT.	60 CM		NATIVE	
	rbp	44	RIBES ALPINUM	ALPINE CURRANT	CONT.	60 CM			
	sbp	12	SPRAEA JAPONICA 'GOLDFLAME'	GOLDFLAME SPIREA	3 GAL	60 CM			
EVERGREEN SHRUBS	CODE	QTY	BOTANICAL NAME	COMMON NAME	CONT.	HT.	SPR.	REMARKS	
	sm	76	JUNIPERUS CHINENSIS 'MINI JULEP'	MINI JULEP JUNIPER	CONT.	60 CM			
	ppc	8	JUNIPERUS HORIZONTALIS 'PULMONARIA COMPACTA'	COMPACT ANDORRA JUNIPER	CONT.	60 CM			
GRASSES	CODE	QTY	BOTANICAL NAME	COMMON NAME	CONT.	HT.	SPR.	REMARKS	
	ca	8	CALAMAGRISTIS X ACUTIFLORA 'KARL FOERSTER'	FEATHER REED GRASS	1 GAL				
PERENNIALS	CODE	QTY	BOTANICAL NAME	COMMON NAME	CONT.	HT.	SPR.	REMARKS	
	hd	12	HEMEROCALLIS X STELLA D'ORO'	DAYLILY	1 GAL	30CM			



EXISTING INDUSTRIAL BUILDING