

SITE STATISTICS

| ITEM | PROVIDED | REQUIRED |
|---|--|-----------------|
| ZONING CATEGORY | H29-DUC-1.56 | |
| LOT AREA | 7,914 m ² (0.7914Ha) | |
| TOTAL NUMBER OF UNITS | 163 | |
| GROUND FLOOR AREA | 1,610 m ² | |
| TOTAL GROSS FLOOR AREA | 10,858m ² | |
| LOT COVERAGE | 20.3% | |
| NUMBER OF STANDARD PARKING SPACES | 177 | 177 TOTAL |
| NUMBER OF ACCESSIBLE PARKING SPACES | 8 | 8 |
| NUMBER OF LOADING AREAS | 1 | 1 |
| PERCENTAGE OF LOT COVERED BY PARKING LANES AND ACCESS | 8.2% | |
| TYPICAL PARKING STALL DIMENSIONS | 2800mm X 5200mm | 2800mm X 5200mm |
| BARRIER FREE TYPE A PARKING STALL DIMENSIONS | 2700mm X 5200mm | |
| BARRIER FREE TYPE B PARKING STALL DIMENSIONS | 3650mm X 5200mm | 3650mm X 5200mm |
| DIMENSIONS FOR A LOADING AREA | n/a | n/a |
| PERCENTAGE OF LANDSCAPE AREAS | 71.5% | |
| MAXIMUM BUILDING HEIGHT FOR PRINCIPAL BUILDINGS | 7 STOREYS | 8 STOREYS |
| MAXIMUM BUILDING HEIGHT FOR ACCESSORY BUILDINGS | n/a | n/a |
| TOTAL FLOOR AREA | 10,858 m ² (116,869 ft ²) | |
| FSI | 1.4 | |

SITE PARKING SUMMARY

| CATEGORY | PROVIDED SPACES | REQUIRED SPACES |
|--|-----------------|-------------------|
| RESIDENT/TENANT PARKING | 153 | 0.938 SPACES/UNIT |
| VISITOR PARKING | 33 | 0.20 SPACES/UNIT |
| NON-RES PARKING (CALCULATED @ 90% OF GFA) | n/a | n/a |
| SUB TOTAL | 186 | 186 |
| TANDEM PARKING | 4 | n/a |
| TOTAL PARKING | 190 | 186 |
| ACCESSIBLE PARKING RESIDENT (INCL. IN PARKING TOTAL) | 6 | |
| ACCESSIBLE PARKING VISITOR (INCL. IN PARKING TOTAL) | 2 | |
| RESIDENT BICYCLE PARKING | 123 | 123 |
| VISITOR BICYCLE PARKING | 41 | 41 |

7 STOREY CONDOMINIUM
163 RES. UNITS
 GFA 116,874 s.f. (10,858 s.m.)
 COVERAGE 17,329 s.f. (1,610 s.m.)

CONTRACTOR MUST CHECK AND VERIFY ALL DIMENSIONS AND JOB CONDITIONS BEFORE PROCEEDING WITH WORK.
 ALL DRAWINGS MAY BE TO BE SUBJECT TO CHANGE DUE TO COMMENTS FROM MUNICIPAL DEPARTMENTS AND OTHER AGENCIES WITH AUTHORITY.
 ALL DRAWINGS AND SPECIFICATIONS ARE THE PROPERTY OF THE ARCHITECTS AND MUST BE RETURNED AT THE COMPLETION OF THE WORK.
 THE CONTRACTOR WORKING FROM DRAWINGS NOT SPECIFICALLY MARKED FOR CONSTRUCTION MUST ASSUME FULL RESPONSIBILITY AND BEAR COSTS FOR ANY CORRECTIONS OR DAMAGES RESULTING FROM HIS OR HER WORK.

KEY TO DETAIL LOCATION

No. DETAIL NUMBER
 No. DRAWING SHEET NUMBER

DRAWING SETS ISSUED

| No. | DATE (DD.MM.YY) | BY |
|-----|-----------------|-------|
| 1 | 02.05.23 | KNYMH |
| 2 | 19.05.23 | KNYMH |
| 3 | 18.07.23 | KNYMH |
| 4 | 08.09.23 | KNYMH |
| 5 | 02.10.23 | KNYMH |
| 6 | 15.11.23 | KNYMH |
| 7 | 18.12.23 | KNYMH |
| 8 | 12.01.24 | KNYMH |

REVISIONS TO DRAWING

| No. | DATE (DD.MM.YY) | BY |
|-----|-----------------|----|
| | | |
| | | |
| | | |
| | | |
| | | |
| | | |
| | | |
| | | |
| | | |
| | | |

AREA SCHEDULE

| AREA TYPE | AREA | |
|--------------------------|-----------------------|-------------------------|
| | SM | SF |
| 1st FLOOR | | |
| Residential Amenity Area | 201 m ² | 2,166 ft ² |
| Residential Common Area | 376 m ² | 4,051 ft ² |
| Residential Suites | 1,032 m ² | 11,108 ft ² |
| | 1,610 m ² | 17,326 ft ² |
| 2nd FLOOR | | |
| Residential Common Area | 193 m ² | 2,073 ft ² |
| Residential Suites | 1,350 m ² | 14,536 ft ² |
| | 1,543 m ² | 16,609 ft ² |
| 3rd FLOOR | | |
| Residential Common Area | 192 m ² | 2,069 ft ² |
| Residential Suites | 1,348 m ² | 14,515 ft ² |
| | 1,541 m ² | 16,583 ft ² |
| 4th FLOOR | | |
| Residential Common Area | 192 m ² | 2,069 ft ² |
| Residential Suites | 1,348 m ² | 14,511 ft ² |
| | 1,540 m ² | 16,580 ft ² |
| 5th FLOOR | | |
| Residential Common Area | 193 m ² | 2,073 ft ² |
| Residential Suites | 1,349 m ² | 14,523 ft ² |
| | 1,542 m ² | 16,596 ft ² |
| 6th FLOOR | | |
| Residential Common Area | 192 m ² | 2,069 ft ² |
| Residential Suites | 1,348 m ² | 14,511 ft ² |
| | 1,540 m ² | 16,580 ft ² |
| 7th FLOOR | | |
| Residential Common Area | 192 m ² | 2,069 ft ² |
| Residential Suites | 1,348 m ² | 14,511 ft ² |
| | 1,540 m ² | 16,580 ft ² |
| Total | 10,856 m ² | 116,854 ft ² |

SUITE BREAKDOWN - AVERAGE AREA

| SUITE PROPERTIES | AVERAGE AREA | |
|--------------------------------------|--------------|---------------------------------------|
| | Count | SF |
| SUITE C3A1 1 BEDROOM | 1 | 45 m ² 484 ft ² |
| SUITE C3A2 2 BEDROOM | 6 | 66 m ² 714 ft ² |
| SUITE C3A3 3 BEDROOM | 7 | 82 m ² 886 ft ² |
| SUITE C3B1 1 BEDROOM | 40 | 45 m ² 485 ft ² |
| SUITE C3B2 2 BEDROOM | 1 | 68 m ² 733 ft ² |
| SUITE C3C2 2 BEDROOM | 13 | 68 m ² 730 ft ² |
| SUITE C3D1 1 BEDROOM | 6 | 49 m ² 529 ft ² |
| SUITE C3E2 2 BEDROOM | 7 | 71 m ² 764 ft ² |
| SUITE C3F1 1 BEDROOM + DEN | 14 | 51 m ² 553 ft ² |
| SUITE C3G2 2 BEDROOM + DEN | 6 | 71 m ² 768 ft ² |
| SUITE C3H1 1 BEDROOM + DEN | 21 | 51 m ² 552 ft ² |
| SUITE C3I2 2 BEDROOM | 6 | 73 m ² 781 ft ² |
| SUITE C3J1 1 BEDROOM + DEN | 1 | 53 m ² 566 ft ² |
| SUITE C3K1 1 BEDROOM + DEN | 14 | 53 m ² 574 ft ² |
| SUITE C3M1 1 BEDROOM | 6 | 53 m ² 571 ft ² |
| SUITE C3N1 1 BEDROOM + DEN | 1 | 54 m ² 576 ft ² |
| SUITE C3O1 1 BEDROOM + DEN | 6 | 57 m ² 615 ft ² |
| SUITE C3Q1 1 BEDROOM + DEN | 6 | 57 m ² 616 ft ² |
| SUITE C3T1 1 BEDROOM | 1 | 47 m ² 508 ft ² |
| AVERAGE AREAS BY PRODUCT TYPE | | |
| 1 BEDROOM | 54 | 46 m ² 500 ft ² |
| 2 BEDROOM | 63 | 53 m ² 570 ft ² |
| 3 BEDROOM | 33 | 69 m ² 744 ft ² |
| 1 BEDROOM + DEN | 6 | 71 m ² 768 ft ² |
| 2 BEDROOM + DEN | 7 | 82 m ² 886 ft ² |
| AVERAGE AREA | 163 | 56 m ² 603 ft ² |

OVERALL SUITE MIX

| Level | UNITS | | | | | | | Suites with Dens > 7.0m ² | Count |
|------------|--------|--------|------------|--------|-------|----------|---------|--------------------------------------|---------|
| | 1 B | 1 B+D | 1 B+D - BF | 2 B | 2 B+D | 2 B - BF | 3 B | | |
| 1st FLOOR | 6 | 6 | 3 | 3 | 0 | 0 | 1 | 0 | 19 |
| 2nd FLOOR | 8 | 6 | 3 | 4 | 1 | 1 | 1 | 0 | 24 |
| 3rd FLOOR | 8 | 6 | 3 | 4 | 1 | 1 | 1 | 0 | 24 |
| 4th FLOOR | 8 | 6 | 3 | 4 | 1 | 1 | 1 | 0 | 24 |
| 5th FLOOR | 8 | 6 | 3 | 4 | 1 | 1 | 1 | 0 | 24 |
| 6th FLOOR | 8 | 6 | 3 | 4 | 1 | 1 | 1 | 0 | 24 |
| 7th FLOOR | 8 | 6 | 3 | 4 | 1 | 1 | 1 | 0 | 24 |
| TOTAL | 54 | 42 | 21 | 27 | 6 | 6 | 7 | 0 | 163 |
| PERCENTAGE | 33.13% | 25.77% | 12.88% | 16.56% | 3.68% | 3.68% | 4.29% | 0% | 100.00% |
| | 58.90% | 12.88% | 20.25% | 3.68% | 4.29% | 0% | 100.00% | | |
| | 71.78% | | 23.93% | 4.29% | 0% | 100.00% | | | |

TYPES OF AREA

| Level | TOTAL CONST. AREA | | GROSS FLOOR AREA | | RESIDENTIAL SUITES AREA | | RES. COMMON AREA | | RES. AMENITY AREA | |
|---------------------|-----------------------|-------------------------|-----------------------|-------------------------|-------------------------|------------------------|----------------------|------------------------|--------------------|-----------------------|
| | SM | SF | SM | SF | SM | SF | SM | SF | SM | SF |
| UNDERGROUND LEVEL 2 | 3,894 m ² | 41,918 ft ² | | | | | | | | |
| UNDERGROUND LEVEL 1 | 3,894 m ² | 41,918 ft ² | | | | | | | | |
| 1st FLOOR | 3,716 m ² | 40,001 ft ² | 1,610 m ² | 17,326 ft ² | 1,032 m ² | 11,108 ft ² | 376 m ² | 4,051 ft ² | 201 m ² | 2,166 ft ² |
| 2nd FLOOR | 1,737 m ² | 18,702 ft ² | 1,544 m ² | 16,625 ft ² | 1,350 m ² | 14,536 ft ² | 193 m ² | 2,073 ft ² | | |
| 3rd FLOOR | 1,676 m ² | 18,042 ft ² | 1,541 m ² | 16,583 ft ² | 1,348 m ² | 14,515 ft ² | 192 m ² | 2,069 ft ² | | |
| 4th FLOOR | 1,676 m ² | 18,039 ft ² | 1,540 m ² | 16,580 ft ² | 1,348 m ² | 14,511 ft ² | 192 m ² | 2,069 ft ² | | |
| 5th FLOOR | 1,677 m ² | 18,055 ft ² | 1,542 m ² | 16,596 ft ² | 1,349 m ² | 14,523 ft ² | 193 m ² | 2,073 ft ² | | |
| 6th FLOOR | 1,676 m ² | 18,039 ft ² | 1,540 m ² | 16,580 ft ² | 1,348 m ² | 14,511 ft ² | 192 m ² | 2,069 ft ² | | |
| 7th FLOOR | 1,676 m ² | 18,039 ft ² | 1,540 m ² | 16,580 ft ² | 1,348 m ² | 14,511 ft ² | 192 m ² | 2,069 ft ² | | |
| MECHANICAL ROOF | 344 m ² | 3,701 ft ² | | | | | | | | |
| TOTAL | 23,575 m ² | 253,754 ft ² | 10,858 m ² | 116,869 ft ² | 9,124 m ² | 98,215 ft ² | 1,530 m ² | 16,473 ft ² | 201 m ² | 2,166 ft ² |

CONSTRUCTION AREA

| Level | GROSS PARKING AREA | | GROSS CONST. AREA | | EXTERIOR CONST. AREA | | TOTAL CONST. AREA | |
|---------------------|----------------------|------------------------|-----------------------|-------------------------|----------------------|------------------------|-----------------------|-------------------------|
| | SM | SF | SM | SF | SM | SF | SM | SF |
| UNDERGROUND LEVEL 2 | 3,894 m ² | 41,918 ft ² | | | | | 3,894 m ² | 41,918 ft ² |
| UNDERGROUND LEVEL 1 | 3,894 m ² | 41,918 ft ² | | | | | 3,894 m ² | 41,918 ft ² |
| 1st FLOOR | | | 1,610 m ² | 17,326 ft ² | 2,107 m ² | 22,674 ft ² | 3,716 m ² | 40,001 ft ² |
| 2nd FLOOR | | | 1,544 m ² | 16,625 ft ² | 193 m ² | 2,077 ft ² | 1,737 m ² | 18,702 ft ² |
| 3rd FLOOR | | | 1,540 m ² | 16,583 ft ² | 136 m ² | 1,459 ft ² | 1,676 m ² | 18,042 ft ² |
| 4th FLOOR | | | 1,540 m ² | 16,580 ft ² | 136 m ² | 1,459 ft ² | 1,676 m ² | 18,039 ft ² |
| 5th FLOOR | | | 1,542 m ² | 16,596 ft ² | 136 m ² | 1,459 ft ² | 1,677 m ² | 18,055 ft ² |
| 6th FLOOR | | | 1,540 m ² | 16,580 ft ² | 136 m ² | 1,459 ft ² | 1,676 m ² | 18,039 ft ² |
| 7th FLOOR | | | 1,540 m ² | 16,580 ft ² | 136 m ² | 1,459 ft ² | 1,676 m ² | 18,039 ft ² |
| MECHANICAL ROOF | | | 316 m ² | 3,407 ft ² | 1,291 m ² | 13,896 ft ² | 1,608 m ² | 17,303 ft ² |
| TOTAL | 7,789 m ² | 83,836 ft ² | 11,174 m ² | 120,276 ft ² | 4,612 m ² | 49,643 ft ² | 23,575 m ² | 253,754 ft ² |

BICYCLE SPACES

| Description | Level | COUNT |
|-------------------------------|---------------------|-------|
| OWNER BICYCLE (O.B.) | UNDERGROUND LEVEL 2 | 29 |
| OWNER BICYCLE (O.B.) | UNDERGROUND LEVEL 1 | 74 |
| VISITOR BICYCLE (V.B.) | 1st FLOOR | 41 |
| SUBTOTAL | | 144 |
| BICYCLE SIZED STORAGE LOCKERS | | |
| Description | Level | COUNT |
| REGULAR STORAGE LOCKER (L) | UNDERGROUND LEVEL 2 | 39 |
| REGULAR STORAGE LOCKER (L) | UNDERGROUND LEVEL 1 | 14 |
| REGULAR STORAGE LOCKER (L) | UNDERGROUND LEVEL 1 | 4 |
| LARGE STORAGE LOCKER (LL) | UNDERGROUND LEVEL 1 | 11 |
| SUBTOTAL | | 67 |
| TOTAL | | 164 |

SUITE BREAKDOWN

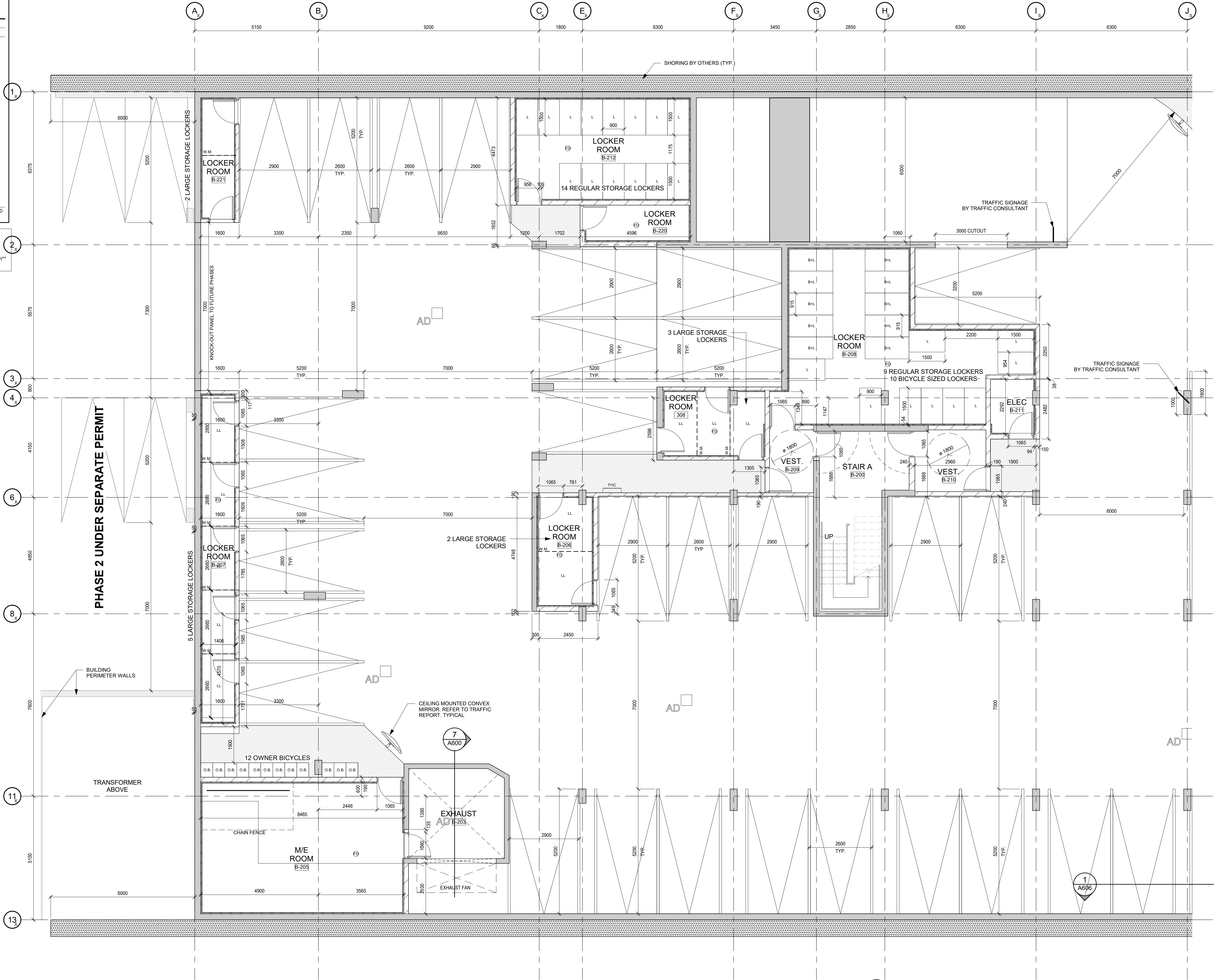
| Suite Name | Unit Name | Description | # of | INDIVIDUAL SUITE AREAS | | | | | |
|------------|-----------|-----------------|------|------------------------|------|-------------------|--------------------|-------------------|---------------------|
| | | | | Bedrooms | Dens | Count | SM | SF | SM |
| SUITE C3A1 | C3A1 | 1 BEDROOM | 1 | 0 | 1 | 45 m ² | 484 m ² | 45 m ² | 484 ft ² |
| SUITE C3A2 | C3A2 | 2 BEDROOM | 2 | 0 | 5 | 66 m ² | 714 m ² | 66 m ² | 714 ft ² |
| SUITE C3A3 | C3A3 | 3 BEDROOM | 3 | 0 | 2 | 81 m ² | 877 m ² | 83 m ² | 889 ft ² |
| SUITE C3B1 | C3B1 | 1 BEDROOM | 1 | 0 | 10 | 45 m ² | 483 m ² | 45 m ² | 487 ft ² |
| SUITE C3B2 | C3B2 | 2 BEDROOM | 2 | 0 | 1 | 68 m ² | 733 m ² | 68 m ² | 733 ft ² |
| SUITE C3C2 | C3C2 | 2 BEDROOM | 2 | 0 | 3 | 67 m ² | 725 m ² | 68 m ² | 732 ft ² |
| SUITE C3C2 | C3C2 | 2 BEDROOM | 2 | 0 | 10 | 67 m ² | 725 m ² | 68 m ² | 737 ft ² |
| SUITE C3D1 | C3D1 | 1 BEDROOM | 1 | 0 | 5 | 49 m ² | 529 m ² | 49 m ² | 529 ft ² |
| SUITE C3D1 | C3E1 | 1 BEDROOM | 1 | 0 | 1 | 49 m ² | 529 m ² | 49 m ² | 529 ft ² |
| SUITE C3E2 | C3E2 | 2 BEDROOM | 2 | 0 | 2 | 69 m ² | 743 m ² | 71 m ² | 769 ft ² |
| SUITE C3E2 | C3E2 | 2 BEDROOM | 2 | 0 | 5 | 71 m ² | 761 m ² | 71 m ² | 769 ft ² |
| SUITE C3F1 | C3F1 | 1 BEDROOM + DEN | 1 | 1 | 4 | 51 m ² | 545 m ² | 52 m ² | 556 ft ² |
| SUITE C3F1 | C3G1 | 1 BEDROOM + DEN | 1 | 1 | 10 | 51 m ² | 550 m ² | 52 m ² | 556 ft ² |
| SUITE C3G2 | C3G2 | 2 BEDROOM + DEN | 2 | 1 | 5 | 71 m ² | 764 m ² | 72 m ² | 778 ft ² |
| SUITE C3G2 | C3H2 | 2 BEDROOM + DEN | 2 | 1 | 1 | 71 m ² | 764 m ² | 71 m ² | 764 ft ² |
| SUITE C3H1 | C3H1 | 1 BEDROOM + DEN | 1 | 1 | 6 | 51 m ² | 546 m ² | 52 m ² | 556 ft ² |
| SUITE C3H1 | C3I1 | 1 BEDROOM + DEN | 1 | 1 | 15 | 51 m ² | 546 m ² | 52 m ² | 556 ft ² |
| SUITE C3I2 | C3I2 | 2 BEDROOM | 2 | 0 | 5 | 72 m ² | 780 m ² | 73 m ² | 784 ft ² |
| SUITE C3I2 | C3J2 | 2 BED | | | | | | | |

LEGEND

- CONSTRUCTION TAGS:**
- ⊕ FLOOR DRAIN
 - ⊕ ROOF DRAIN
 - S.D. SLAB DRAIN
 - A.D. AREA/ DUAL-LEVEL DRAIN
 - 101 WALL TAGS SEE A015 - WALL TYPES
 - 101 CEILING TAGS SEE A016 - CEILING TYPES
 - 101 ROOM TAGS SEE A000 - ROOM SCHEDULE
 - 101 DOOR TAGS SEE A010 - DOOR SCHEDULE
 - 1 WINDOW TAGS SEE A020 - WINDOW ELEVATIONS
 - LOCKER NUMBERS
 - A001 PARKING NUMBERS

NOTE: ALL DIMENSIONS SHOWN ON 200 SERIES DRAWINGS ARE TO FINISHED FACE OF GYPSUM BOARD UNLESS NOTED OTHERWISE

- BICYCLE SIZED STORAGE LOCKER (B+L): 915mm x 1830mm
 REGULAR SIZED STORAGE LOCKER (L): 900mm x 1500mm
 OWNER BICYCLE (O.B.): 600mm x 500mm
 VISITOR BICYCLE (V.B.): 600mm x 1800mm
 LARGE STORAGE LOCKER (LL): 1060mm x 2530mm**
 **denotes minimum dimension



CONTRACTOR MUST CHECK AND VERIFY ALL DIMENSIONS AND JOB CONDITIONS BEFORE PROCEEDING WITH WORK
 ALL DRAWINGS MAY BE TO BE SUBJECT TO CHANGE DUE TO COMMENTS FROM MUNICIPAL DEPARTMENTS AND OTHER AGENCIES WITH AUTHORITY
 ALL DRAWINGS AND SPECIFICATIONS ARE THE PROPERTY OF THE ARCHITECTS AND MUST BE RETURNED AT THE COMPLETION OF THE WORK
 THE CONTRACTOR WORKING FROM DRAWINGS NOT SPECIFICALLY MARKED FOR CONSTRUCTION MUST ASSUME FULL RESPONSIBILITY AND BEAR COSTS FOR ANY CORRECTIONS OR DAMAGES RESULTING FROM HIS OR HER WORK

KEY TO DETAIL LOCATION

| | |
|-----|----------------------|
| No. | DETAIL NUMBER |
| No. | DRAWING SHEET NUMBER |

| DRAWING SETS ISSUED | No. | DATE (DD.MM.YY) | BY |
|------------------------------|-----|-----------------|-------|
| FOR CLIENT REVIEW | 1 | 02.05.23 | KNYMH |
| ISSUED FOR SPA SUBMISSION 1 | 2 | 19.05.23 | KNYMH |
| ISSUED FOR COORDINATION | 3 | 18.07.23 | KNYMH |
| ISSUED FOR SPA 2 SUBMISSION | 4 | 08.09.23 | KNYMH |
| ISSUED FOR BUDGET SET | 5 | 02.10.23 | KNYMH |
| ISSUED FOR PERMIT SUBMISSION | 6 | 15.11.23 | KNYMH |
| ISSUED FOR TENDER | 7 | 18.12.23 | KNYMH |
| ISSUED FOR SPA SUBMISSION 3 | 8 | 12.01.24 | KNYMH |

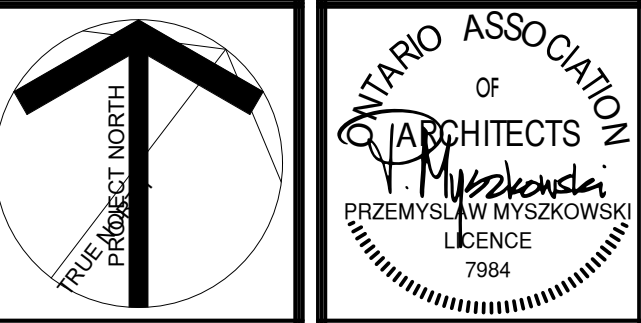
ALL PREVIOUS ISSUES OF THIS DRAWING ARE SUPERSEDED

| REVISIONS TO DRAWING | No. | DATE (DD.MM.YY) | BY |
|----------------------|-----|-----------------|----|
| | | | |
| | | | |
| | | | |

BUILDING PERMIT NUMBER:
 NOT FOR CONSTRUCTION WITHOUT PERMIT

KNYMH
 ARCHITECTURE • SOLUTIONS

KNYMH INC.
 1006 SKYVIEW DRIVE • SUITE 101
 BURLINGTON, ONTARIO • L7P 0V1
 T 905.639.6595
 F 905.639.0394
 www.knymh.com info@knymh.com



CLOCKWORK - Phase 2
 3008 WILLIAM CUTMORE BLVD.
 OAKVILLE, ONTARIO

DRAWING SHEET TITLE:
ENLARGED UNDERGROUND LEVEL 2 PLAN - PART 1

DRAWING SCALE: As indicated
 PROJECT NUMBER: **22404**

DRAWN BY: Author
 CHECKED BY: Checker
 DRAWING SHEET NUMBER: **A200.1A**
 PLOT DATE: 2023-12-08

1 ENLARGED UNDERGROUND LEVEL 2 PLAN - PART 1
 A200.1A 1:75

CONTRACTOR MUST CHECK AND VERIFY ALL DIMENSIONS AND JOB CONDITIONS BEFORE PROCEEDING WITH WORK
 ALL DRAWINGS MAY BE TO BE SUBJECT TO CHANGE DUE TO COMMENTS FROM MUNICIPAL DEPARTMENTS AND OTHER AGENCIES WITH AUTHORITY
 ALL DRAWINGS AND SPECIFICATIONS ARE THE PROPERTY OF THE ARCHITECTS AND MUST BE RETURNED AT THE COMPLETION OF THE WORK
 THE CONTRACTOR WORKING FROM DRAWINGS NOT SPECIFICALLY MARKED FOR CONSTRUCTION MUST ASSUME FULL RESPONSIBILITY AND BEAR COSTS FOR ANY CORRECTIONS OR DAMAGES RESULTING FROM HIS OR HER WORK

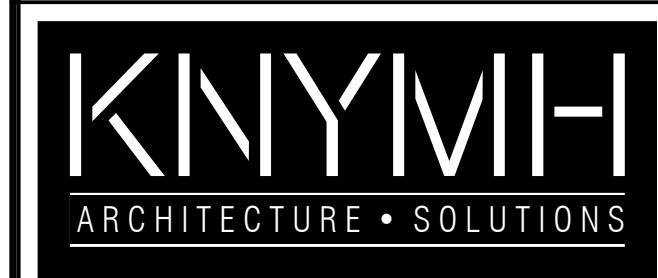
KEY TO DETAIL LOCATION
 No. DETAIL NUMBER
 No. DRAWING SHEET NUMBER

| DRAWING SETS ISSUED | No. | DATE (DD.MM.YY) | BY |
|------------------------------|-----|-----------------|-------|
| FOR CLIENT REVIEW | 1 | 02.05.23 | KNYMH |
| ISSUED FOR SPA SUBMISSION 1 | 2 | 19.05.23 | KNYMH |
| ISSUED FOR COORDINATION | 3 | 18.07.23 | KNYMH |
| ISSUED FOR SPA 2 SUBMISSION | 4 | 08.09.23 | KNYMH |
| ISSUED FOR BUDGET SET | 5 | 02.10.23 | KNYMH |
| ISSUED FOR PERMIT SUBMISSION | 6 | 15.11.23 | KNYMH |
| ISSUED FOR TENDER | 7 | 18.12.23 | KNYMH |
| ISSUED FOR SPA SUBMISSION 3 | 8 | 12.01.24 | KNYMH |

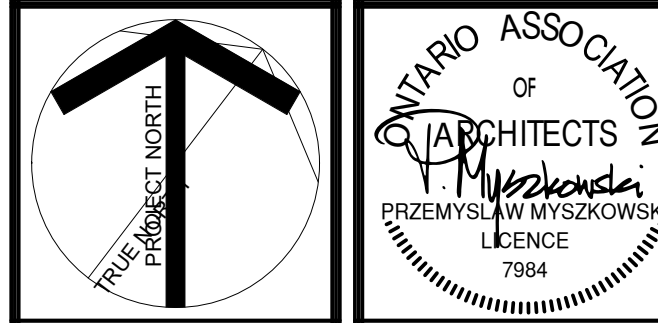
ALL PREVIOUS ISSUES OF THIS DRAWING ARE SUPERSEDED

| REVISIONS TO DRAWING | No. | DATE (DD.MM.YY) | BY |
|----------------------|-----|-----------------|----|
| | | | |
| | | | |
| | | | |
| | | | |
| | | | |
| | | | |
| | | | |
| | | | |
| | | | |

BUILDING PERMIT NUMBER:
 NOT FOR CONSTRUCTION WITHOUT PERMIT



KNYMH INC.
 1006 SKYVIEW DRIVE • SUITE 101
 BURLINGTON, ONTARIO • L7P 0V1
 T 905.639.6595
 F 905.639.0394
 www.knymh.com info@knymh.com



CLOCKWORK - Phase 2
 3008 WILLIAM CUTMORE BLVD.
 OAKVILLE, ONTARIO

DRAWING SHEET TITLE:
UNDERGROUND LEVEL 1 FLOOR PLAN

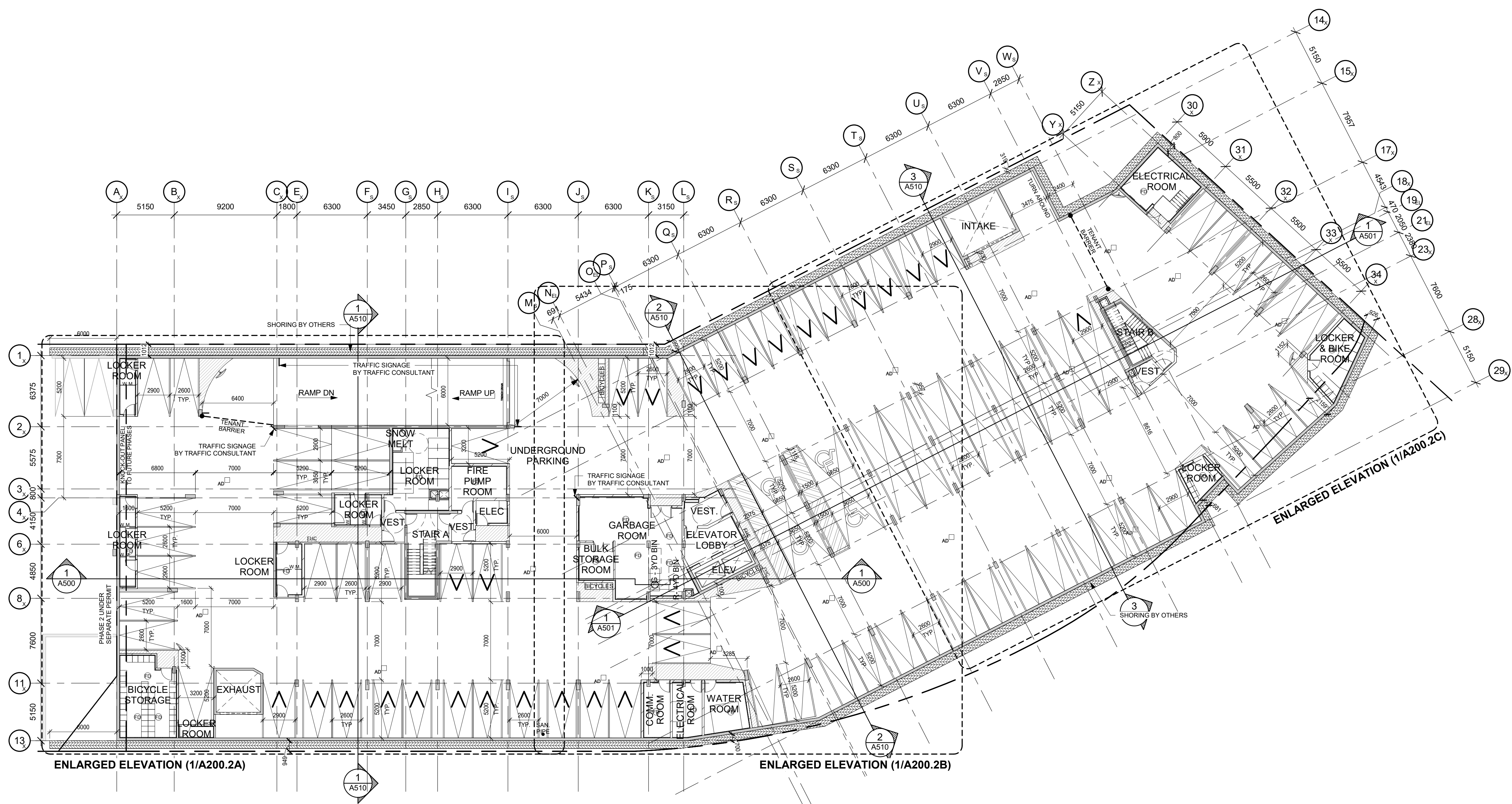
DRAWING SCALE:
 As indicated

PROJECT NUMBER:
22404

DRAWN BY: Author
 CHECKED BY: Checker

DRAWING SHEET NUMBER:
A200.2

DRAWING VERSION:
 2023-12-08



1 UNDERGROUND LEVEL 1
 A200.2 1:200

| LEGEND | | CONSTRUCTION TAGS: | |
|--------|------------------------|---|--|
| ⊕ | FLOOR DRAIN | 101 | WALL TAGS SEE A015 - WALL TYPES |
| ⊙ | ROOF DRAIN | 102 | CEILING TAGS SEE A016 - CEILING TYPES |
| S.D. | SLAB DRAIN | 103 | ROOM TAGS SEE A000 - ROOM SCHEDULE |
| A.D. | AREA/ DUAL-LEVEL DRAIN | 104 | DOOR TAGS SEE A910 - DOOR SCHEDULE |
| ⬆ | LOCKER NUMBERS | 105 | WINDOW TAGS SEE A020 - WINDOW ELEVATIONS |
| A001 | PARKING NUMBERS | GENERAL: ALL DIMENSIONS SHOWN ON 200 SERIES DRAWINGS ARE TO STUD FRAMING UNLESS NOTED OTHERWISE | |

| UNDERGROUND LEVEL 1 PARKING SCHEDULE | |
|--------------------------------------|-------|
| Comments | Count |
| TANDEM | 2 |
| TENANT | 57 |
| VISITOR | 29 |
| Grand total | 88 |

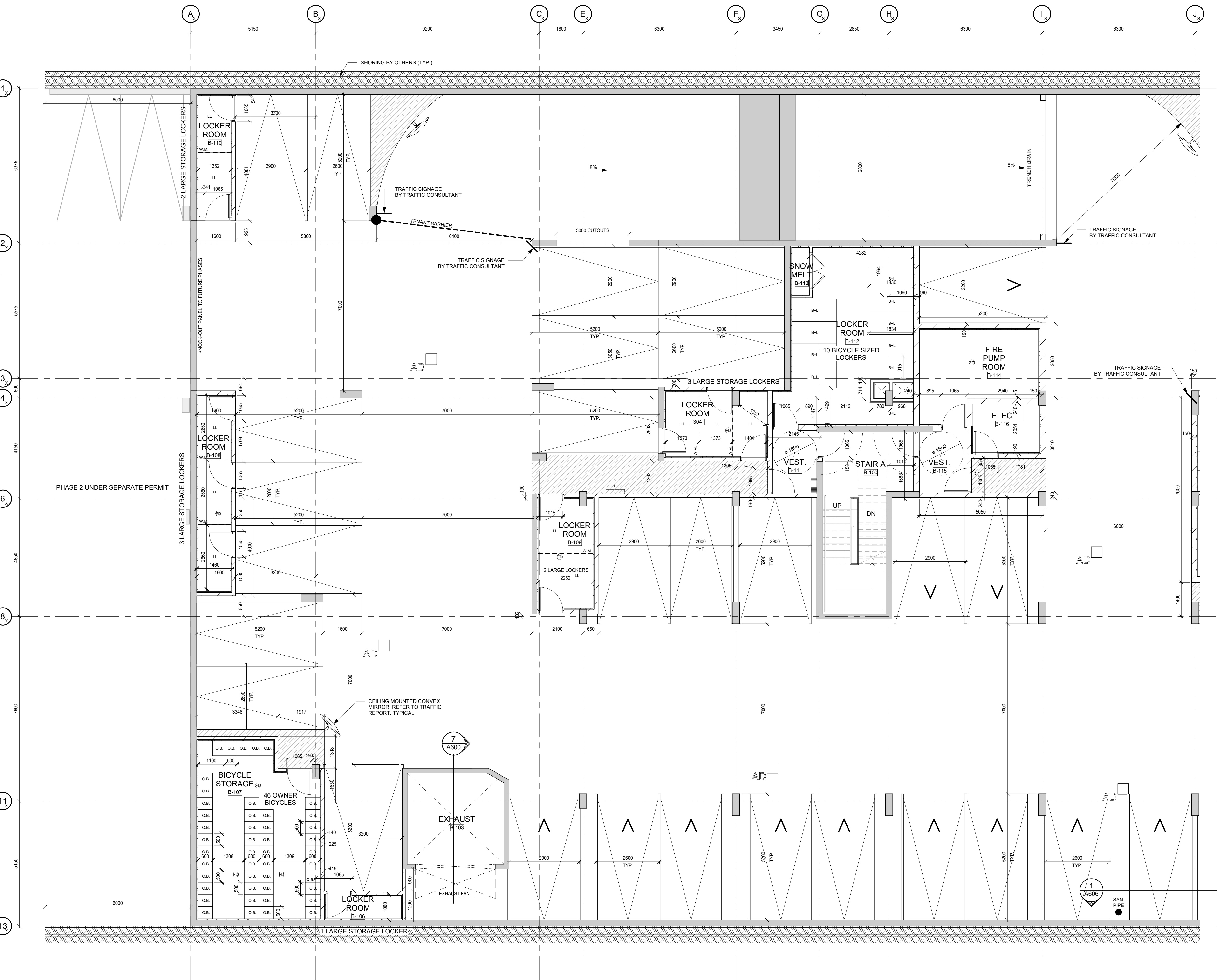
TIMESHEET: 2024-01-11 12:32:22 PM FILEPATH: C:\Real Lock\22404 - Clockwork Phase 2\Drawings\22404-1.dwg

LEGEND

- CONSTRUCTION TAGS:**
- ⊕ FLOOR DRAIN
 - ⊙ ROOF DRAIN
 - S.D. SLAB DRAIN
 - A.D. AREA DUAL-LEVEL DRAIN
 - 101 WALL TAGS SEE A015 - WALL TYPES
 - 1 CEILING TAGS SEE A016 - CEILING TYPES
 - 101 ROOM TAGS SEE A000 - ROOM SCHEDULE
 - 101 DOOR TAGS SEE A010 - DOOR SCHEDULE
 - u WINDOW TAGS SEE A020 - WINDOW ELEVATIONS
 - LOCKER NUMBERS
 - A001 PARKING NUMBERS

NOTE: ALL DIMENSIONS SHOWN ON 200 SERIES DRAWINGS ARE TO FINISHED FACE OF GYPSUM BOARD UNLESS NOTED OTHERWISE

- BICYCLE SIZED STORAGE LOCKER (B+L): 915mm x 1830mm
 - REGULAR STORAGE LOCKER (L): 900mm x 1500mm
 - OWNER BICYCLE (O.B.): 600mm x 500mm
 - VISITOR BICYCLE (V.B.): 600mm x 1800mm
 - LARGE STORAGE LOCKER (LL): 1060mm x 2530mm**
- **denotes minimum dimension



CONTRACTOR MUST CHECK AND VERIFY ALL DIMENSIONS AND JOB CONDITIONS BEFORE PROCEEDING WITH WORK
 ALL DRAWINGS MAY BE TO BE SUBJECT TO CHANGE DUE TO COMMENTS FROM MUNICIPAL DEPARTMENTS AND OTHER AGENCIES WITH AUTHORITY
 ALL DRAWINGS AND SPECIFICATIONS ARE THE PROPERTY OF THE ARCHITECTS AND MUST BE RETURNED AT THE COMPLETION OF THE WORK
 THE CONTRACTOR WORKING FROM DRAWINGS NOT SPECIFICALLY MARKED FOR CONSTRUCTION MUST ASSUME FULL RESPONSIBILITY AND BEAR COSTS FOR ANY CORRECTIONS OR DAMAGES RESULTING FROM HIS OR HER WORK

KEY TO DETAIL LOCATION

| | |
|-----|----------------------|
| No. | DETAIL NUMBER |
| No. | DRAWING SHEET NUMBER |

| DRAWING SETS ISSUED | No. | DATE (DD.MM.YY) | BY |
|------------------------------|-----|-----------------|-------|
| FOR CLIENT REVIEW | 1 | 02.05.23 | KNYMH |
| ISSUED FOR SPA SUBMISSION 1 | 2 | 19.05.23 | KNYMH |
| ISSUED FOR COORDINATION | 3 | 18.07.23 | KNYMH |
| ISSUED FOR SPA 2 SUBMISSION | 4 | 08.09.23 | KNYMH |
| ISSUED FOR BUDGET SET | 5 | 02.10.23 | KNYMH |
| ISSUED FOR PERMIT SUBMISSION | 6 | 15.11.23 | KNYMH |
| ISSUED FOR TENDER | 7 | 18.12.23 | KNYMH |
| ISSUED FOR SPA SUBMISSION 3 | 8 | 12.01.24 | KNYMH |

ALL PREVIOUS ISSUES OF THIS DRAWING ARE SUPERSEDED

| REVISIONS TO DRAWING | No. | DATE (DD.MM.YY) | BY |
|----------------------|-----|-----------------|----|
| | | | |
| | | | |
| | | | |
| | | | |

BUILDING PERMIT NUMBER:
 NOT FOR CONSTRUCTION WITHOUT PERMIT

KNYMH
 ARCHITECTURE • SOLUTIONS

KNYMH INC.
 1006 SKYVIEW DRIVE • SUITE 101
 BURLINGTON, ONTARIO • L7P 0V1
 T 905.639.6595
 F 905.639.0394
 www.knymh.com info@knymh.com

TRUE PROJECT NORTH

ONTARIO ASSOCIATION OF ARCHITECTS
 PRZEMYSŁAW MYŚKOWSKI
 LICENCE 7894

mattamyHOMES

CLOCKWORK - Phase 2
 3008 WILLIAM CUTMORE BLVD.
 OAKVILLE, ONTARIO

DRAWING SHEET TITLE:
ENLARGED UNDERGROUND LEVEL 1 PLAN - PART 1

DRAWING SCALE: As indicated
 PROJECT NUMBER: **22404**

DRAWN BY: Author
 CHECKED BY: Checker
 DRAWING SHEET NUMBER: **A200.2A**
 PLOT DATE: 2023-12-08

1 ENLARGED UNDERGROUND LEVEL 1 PLAN - PART 1
 A200.2A 1:75

TIMESTAMP: 2024-01-11 12:40:34 PM FILE: P:\In-Clockwork-Phase 2\Drawings\200\200.2A.dwg

LEGEND

- CONSTRUCTION TAGS:**
- ⊕ FLOOR DRAIN
 - ⊕ ROOF DRAIN
 - S.D. SLAB DRAIN
 - AD. AREA/ DUAL-LEVEL DRAIN
 - 101 WALL TAGS SEE A015 - WALL TYPES
 - 101 CEILING TAGS SEE A016 - CEILING TYPES
 - 101 ROOM TAGS SEE A000 - ROOM SCHEDULE
 - 101 DOOR TAGS SEE A010 - DOOR SCHEDULE
 - 11 WINDOW TAGS SEE A020 - WINDOW ELEVATIONS
 - LOCKER NUMBERS
 - A001 PARKING NUMBERS

NOTE: ALL DIMENSIONS SHOWN ON 200 SERIES DRAWINGS ARE TO FINISHED FACE OF GYPSUM BOARD UNLESS NOTED OTHERWISE

- BICYCLE SIZED STORAGE LOCKER (B+L): 915mm x 1830mm
 REGULAR STORAGE LOCKER (L): 900mm x 1500mm
 OWNER BICYCLE (O.B.): 600mm x 500mm
 VISITOR BICYCLE (V.B.): 600mm x 1800mm
 LARGE STORAGE LOCKER (LL): 1060mm x 2530mm**
 **denotes minimum dimension



CONTRACTOR MUST CHECK AND VERIFY ALL DIMENSIONS AND JOB CONDITIONS BEFORE PROCEEDING WITH WORK
 ALL DRAWINGS MAY BE TO BE SUBJECT TO CHANGE DUE TO COMMENTS FROM MUNICIPAL DEPARTMENTS AND OTHER AGENCIES WITH AUTHORITY
 ALL DRAWINGS AND SPECIFICATIONS ARE THE PROPERTY OF THE ARCHITECTS AND MUST BE RETURNED AT THE COMPLETION OF THE WORK
 THE CONTRACTOR WORKING FROM DRAWINGS NOT SPECIFICALLY MARKED FOR CONSTRUCTION MUST ASSUME FULL RESPONSIBILITY AND BEAR COSTS FOR ANY CORRECTIONS OR DAMAGES RESULTING FROM HIS OR HER WORK

KEY TO DETAIL LOCATION

| | |
|-----|----------------------|
| No. | DETAIL NUMBER |
| No. | DRAWING SHEET NUMBER |

| DRAWING SETS ISSUED | No. | DATE (DD.MM.YY) | BY |
|------------------------------|-----|-----------------|-------|
| FOR CLIENT REVIEW | 1 | 02.05.23 | KNYMH |
| ISSUED FOR SPA SUBMISSION 1 | 2 | 19.05.23 | KNYMH |
| ISSUED FOR COORDINATION | 3 | 18.07.23 | KNYMH |
| ISSUED FOR SPA 2 SUBMISSION | 4 | 08.09.23 | KNYMH |
| ISSUED FOR BUDGET SET | 5 | 02.10.23 | KNYMH |
| ISSUED FOR PERMIT SUBMISSION | 6 | 15.11.23 | KNYMH |
| ISSUED FOR TENDER | 7 | 18.12.23 | KNYMH |
| ISSUED FOR SPA SUBMISSION 3 | 8 | 12.01.24 | KNYMH |
| | | | |
| | | | |
| | | | |

ALL PREVIOUS ISSUES OF THIS DRAWING ARE SUPERSEDED

| REVISIONS TO DRAWING | No. | DATE (DD.MM.YY) | BY |
|----------------------|-----|-----------------|----|
| | | | |
| | | | |
| | | | |
| | | | |
| | | | |

BUILDING PERMIT NUMBER:
 NOT FOR CONSTRUCTION WITHOUT PERMIT

KNYMH
 ARCHITECTURE • SOLUTIONS

KNYMH INC.
 1006 SKYVIEW DRIVE • SUITE 101
 BURLINGTON, ONTARIO • L7P 0V1
 T 905.639.6595
 F 905.639.0394
 www.knymh.com info@knymh.com

TRUE PROJECT NORTH

ONTARIO ASSOCIATION OF ARCHITECTS
 PRZEMYSŁAW MYŚKOWSKI
 LICENCE 7984

mattamyHOMES

CLOCKWORK - Phase 2
 3008 WILLIAM CUTMORE BLVD.
 OAKVILLE, ONTARIO

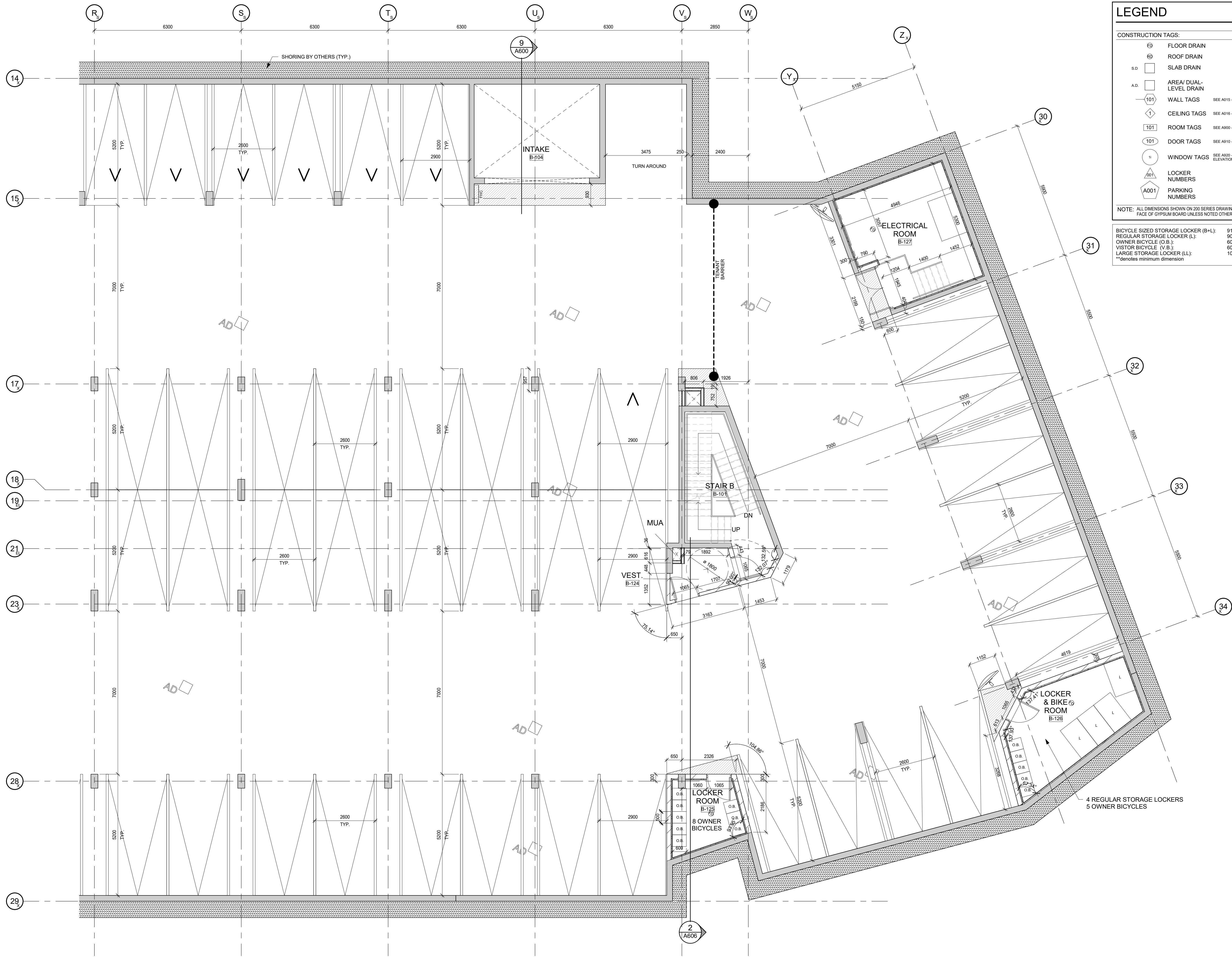
DRAWING SHEET TITLE:
ENLARGED UNDERGROUND LEVEL 1 PLAN - PART 2

DRAWING SCALE: As indicated
 PROJECT NUMBER: **22404**

DRAWN BY: Author
 CHECKED BY: Checker
 DRAWING SHEET NUMBER: **A200.2B**
 PLOT DATE: 2023-12-08

1 ENLARGED UNDERGROUND LEVEL 1 PLAN - PART 2
 A200.2B 1:75

TIMESTAMP: 2024-01-11 12:40:38 PM FILEPATH: C:\Real Lock\22404 - Clockwork Phase 2\Drawings\200\1.dwg



LEGEND

CONSTRUCTION TAGS:

- FLOOR DRAIN
- ROOF DRAIN
- SLAB DRAIN
- AREA DUAL-LEVEL DRAIN
- WALL TAGS SEE A015 - WALL TYPES
- CEILING TAGS SEE A000 - CEILING TYPES
- ROOM TAGS SEE A000 - ROOM SCHEDULE
- DOOR TAGS SEE A910 - DOOR SCHEDULE
- WINDOW TAGS SEE A820 - WINDOW ELEVATIONS
- LOCKER NUMBERS
- PARKING NUMBERS

NOTE: ALL DIMENSIONS SHOWN ON 200 SERIES DRAWINGS ARE TO FINISHED FACE OF GYPSUM BOARD UNLESS NOTED OTHERWISE

BICYCLE SIZED STORAGE LOCKER (B+L): 915mm x 1830mm
 REGULAR STORAGE LOCKER (L): 900mm x 1500mm
 OWNER BICYCLE (O.B.): 600mm x 500mm
 VISITOR BICYCLE (V.B.): 600mm x 1800mm
 LARGE STORAGE LOCKER (LL): 1060mm x 2530mm**
 **denotes minimum dimension

CONTRACTOR MUST CHECK AND VERIFY ALL DIMENSIONS AND JOB CONDITIONS BEFORE PROCEEDING WITH WORK

ALL DRAWINGS MAY BE TO BE SUBJECT TO CHANGE DUE TO COMMENTS FROM MUNICIPAL DEPARTMENTS AND OTHER AGENCIES WITH AUTHORITY

ALL DRAWINGS AND SPECIFICATIONS ARE THE PROPERTY OF THE ARCHITECTS AND MUST BE RETURNED AT THE COMPLETION OF THE WORK

THE CONTRACTOR WORKING FROM DRAWINGS NOT SPECIFICALLY MARKED FOR CONSTRUCTION MUST ASSUME FULL RESPONSIBILITY AND BEAR COSTS FOR ANY CORRECTIONS OR DAMAGES RESULTING FROM HIS OR HER WORK

KEY TO DETAIL LOCATION

| | |
|-----|----------------------|
| No. | DETAIL NUMBER |
| No. | DRAWING SHEET NUMBER |

| DRAWING SETS ISSUED | No. | DATE (DD.MM.YY) | BY |
|------------------------------|-----|-----------------|-------|
| FOR CLIENT REVIEW | 1 | 02.05.23 | KNYMH |
| ISSUED FOR SPA SUBMISSION 1 | 2 | 19.05.23 | KNYMH |
| ISSUED FOR COORDINATION | 3 | 18.07.23 | KNYMH |
| ISSUED FOR SPA 2 SUBMISSION | 4 | 08.09.23 | KNYMH |
| ISSUED FOR BUDGET SET | 5 | 02.10.23 | KNYMH |
| ISSUED FOR PERMIT SUBMISSION | 6 | 15.11.23 | KNYMH |
| ISSUED FOR TENDER | 7 | 18.12.23 | KNYMH |
| ISSUED FOR SPA SUBMISSION 3 | 8 | 12.01.24 | KNYMH |

ALL PREVIOUS ISSUES OF THIS DRAWING ARE SUPERSEDED

| REVISIONS TO DRAWING | No. | DATE (DD.MM.YY) | BY |
|----------------------|-----|-----------------|----|
| | | | |
| | | | |
| | | | |
| | | | |
| | | | |
| | | | |
| | | | |
| | | | |
| | | | |
| | | | |

BUILDING PERMIT NUMBER:
 NOT FOR CONSTRUCTION WITHOUT PERMIT

KNYMH
 ARCHITECTURE • SOLUTIONS

KNYMH INC.
 1006 SKYVIEW DRIVE • SUITE 101
 BURLINGTON, ONTARIO • L7P 0V1
 T 905.639.6595
 F 905.639.0394
 www.knymh.com info@knymh.com

TRUE NORTH

ONTARIO ASSOCIATION OF ARCHITECTS
 PRZEMYSŁAW MYSZKOWSKI
 LEISURE
 7894

mattamyHOMES

CLOCKWORK - Phase 2
 3008 WILLIAM CUTMORE BLVD.
 OAKVILLE, ONTARIO

DRAWING SHEET TITLE:
ENLARGED UNDERGROUND LEVEL 1 PLAN - PART 3

DRAWING SCALE: As indicated
 PROJECT NUMBER: **22404**

DRAWN BY: Author
 CHECKED BY: Checker
 DRAWING SHEET NUMBER: **A200.2C**
 PLOT DATE: 2023-12-08

TIMESHEET: 2024-01-11 12:45:58 PM FILEPATH: C:\Real Lock\22404 - Clockwork Phase 2\Drawings\22404.rvt

WHERE ELECTRICAL OUTLET BOXES OF SIMILAR UTILITY PORTS ARE LOCATED IN FIRE SEPARATION WALLS AND SERVE OPPOSITE SIDES OF THE PARTITION, THEY SHALL BE SEPARATED BY STUDS OR SHALL BE SURROUNDED WITH AN APPROVED TYPE FIRE STOP MATERIAL THAT MAINTAINS THE INTEGRITY OF THE FIRE RATED SEPARATION PER B-3.1.8.1

PASSENGER ELEVATORS DIMENSIONS SHALL BE SIZED TO ACCOMMODATE ACCESS FOR A PATIENT STRETCHER 2010 X 610 IN THE PRONE POSITION PER B-3.5.4.1

PASSENGER ELEVATORS SHALL CONFORM TO APPENDIX E OF ASME A17.1/CSA-B44, SAFETY CODE FOR ELEVATORS AND ESCALATORS PER B-3.5.2.2.

WALL AND FLOOR FINISHES IN WASHROOMS AND KITCHENS SHALL BE PROTECTED FROM DETERIORATION AND BE OF IMPERVIOUS MATERIALS THAT CAN BE EASILY CLEANED PER B-3.7.4.12

NO MIRRORS OR SIMILAR VISUAL DISTRACTIONS SHALL BE PLACED IN OR ADJACENT TO ANY EXIT IN A MANNER THAT WOULD CONFUSE THE DIRECTION OF EXIT PER B-3.4.1.9.(1).

LEGEND

- CONSTRUCTION TAGS:**
- ⊕ FLOOR DRAIN
 - ⊕ ROOF DRAIN
 - S.D. SLAB DRAIN
 - A.D. AREA/ DUAL-LEVEL DRAIN
 - A01 LOCKER NUMBERS
 - A001 PARKING NUMBERS

- CONSTRUCTION TAGS:**
- 101 WALL TAGS SEE A015 - WALL TYPES
 - 1 CEILING TAGS SEE A016 - CEILING TYPES
 - 101 ROOM TAGS SEE A000 - ROOM SCHEDULE
 - 101 DOOR TAGS SEE A010 - DOOR SCHEDULE
 - 1 WINDOW TAGS SEE A020 - WINDOW ELEVATIONS
- GENERAL: ALL DIMENSIONS SHOWN ON 200 SERIES DRAWINGS ARE TO STUD FRAMING UNLESS NOTED OTHERWISE
- NOTE:

CONTRACTOR MUST CHECK AND VERIFY ALL DIMENSIONS AND JOB CONDITIONS BEFORE PROCEEDING WITH WORK

ALL DRAWINGS MAY BE TO BE SUBJECT TO CHANGE DUE TO COMMENTS FROM MUNICIPAL DEPARTMENTS AND OTHER AGENCIES WITH AUTHORITY

ALL DRAWINGS AND SPECIFICATIONS ARE THE PROPERTY OF THE ARCHITECTS AND MUST BE RETURNED AT THE COMPLETION OF THE WORK

THE CONTRACTOR WORKING FROM DRAWINGS NOT SPECIFICALLY MARKED FOR CONSTRUCTION MUST ASSUME FULL RESPONSIBILITY AND BEAR COSTS FOR ANY CORRECTIONS OR DAMAGES RESULTING FROM HIS OR HER WORK

KEY TO DETAIL LOCATION

| | |
|-----|----------------------|
| No. | DETAIL NUMBER |
| No. | DRAWING SHEET NUMBER |

| DRAWING SETS ISSUED | No. | DATE (DD.MM.YY) | BY |
|------------------------------|-----|-----------------|-------|
| FOR CLIENT REVIEW | 1 | 02.05.23 | KNYMH |
| ISSUED FOR SPA SUBMISSION 1 | 2 | 19.05.23 | KNYMH |
| ISSUED FOR COORDINATION | 3 | 18.07.23 | KNYMH |
| ISSUED FOR SPA 2 SUBMISSION | 4 | 08.09.23 | KNYMH |
| ISSUED FOR BUDGET SET | 5 | 02.10.23 | KNYMH |
| ISSUED FOR PERMIT SUBMISSION | 6 | 15.11.23 | KNYMH |
| ISSUED FOR TENDER | 7 | 18.12.23 | KNYMH |
| ISSUED FOR SPA SUBMISSION 3 | 8 | 12.01.24 | KNYMH |

ALL PREVIOUS ISSUES OF THIS DRAWING ARE SUPERSEDED

| REVISIONS TO DRAWING | No. | DATE (DD.MM.YY) | BY |
|----------------------|-----|-----------------|----|
| | | | |
| | | | |
| | | | |
| | | | |
| | | | |
| | | | |
| | | | |
| | | | |
| | | | |
| | | | |

BUILDING PERMIT NUMBER:
NOT FOR CONSTRUCTION WITHOUT PERMIT

KNYMH
ARCHITECTURE • SOLUTIONS

KNYMH INC.
1006 SKYVIEW DRIVE • SUITE 101
BURLINGTON, ONTARIO • L7P 0V1
T 905.639.6595
F 905.639.0394
www.knymh.com info@knymh.com

TRUE PROJECT NORTH

ONTARIO ASSOCIATION OF ARCHITECTS
PRZEMYSŁAW MYŚKOWSKI
LENDICE
7984

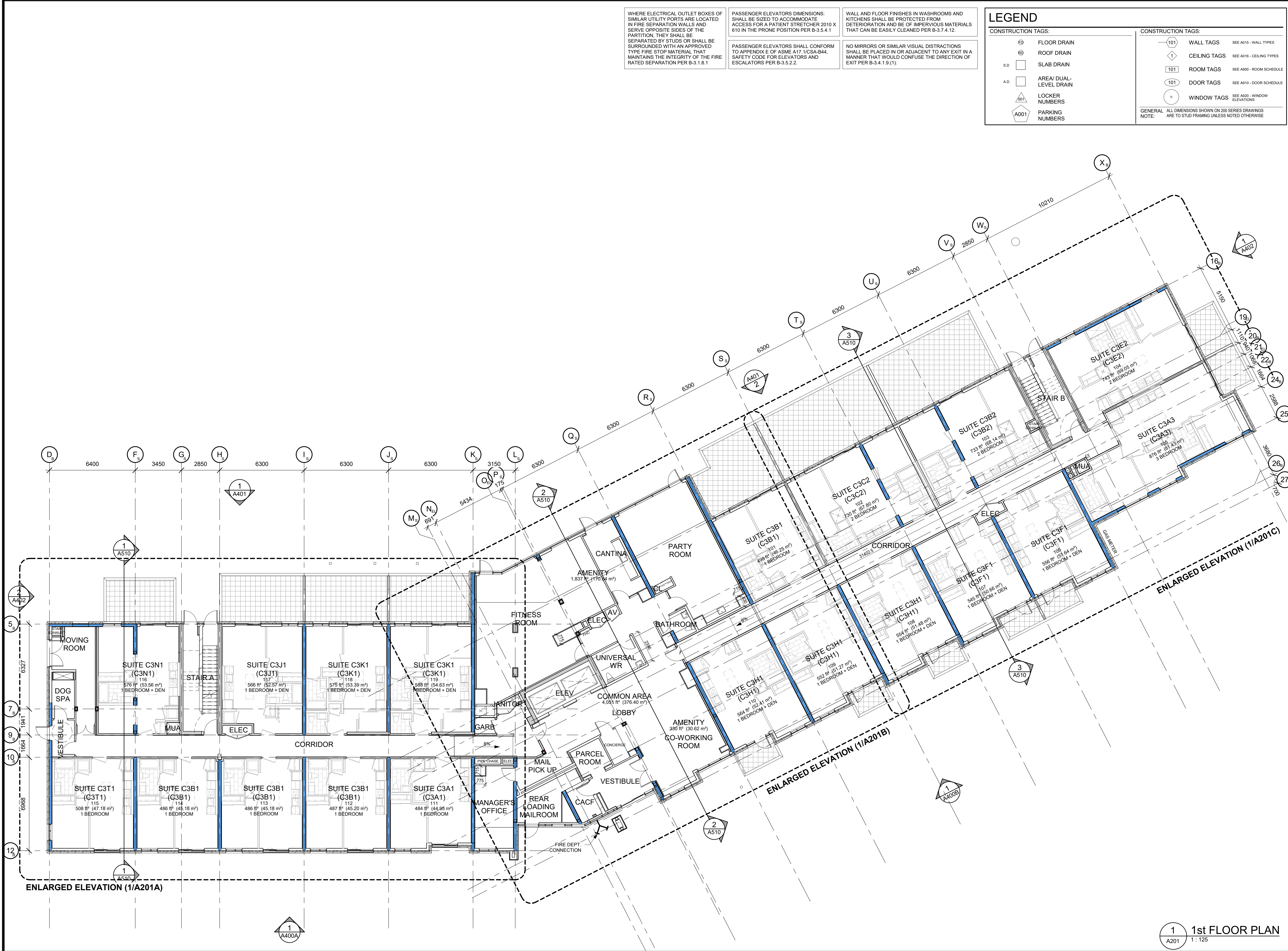
mattamyHOMES

CLOCKWORK - Phase 2
3008 WILLIAM CUTMORE BLVD.
OAKVILLE, ONTARIO

DRAWING SHEET TITLE:
1st FLOOR PLAN

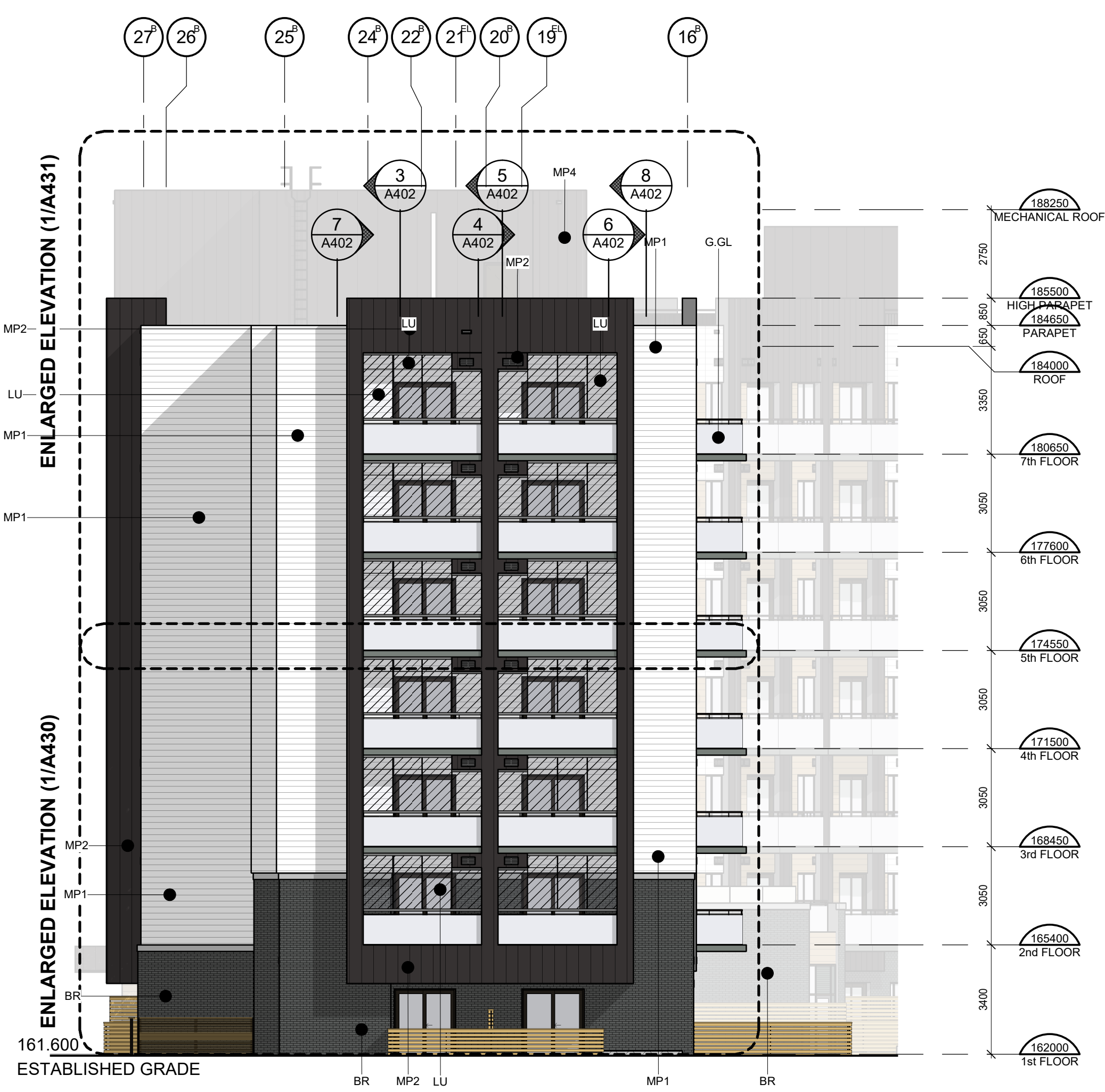
DRAWING SCALE: As indicated
PROJECT NUMBER: **22404**

DRAWN BY: Author
CHECKED BY: Checker
DRAWING VERSION: 000
PLOT DATE: 2023-12-08
DRAWING SHEET NUMBER: **A201**



1 1st FLOOR PLAN
A201 1 : 125

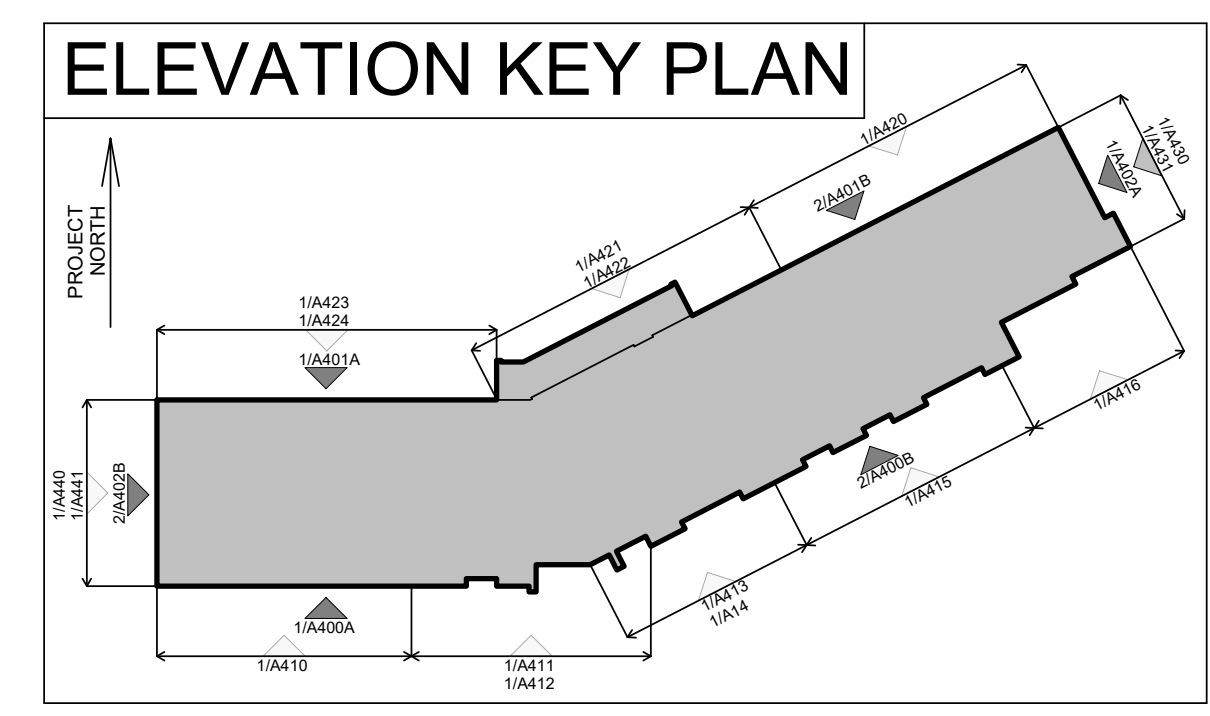
TIMESTAMP: 2024-01-11 12:40:56 PM FILEPATH: C:\inet\loc\22404 - Clockwork - Phase 2\Drawings\22404\A201.rvt



1 EAST ELEVATION
A402 1:125



2 WEST ELEVATION
A402 1:125



LEGEND

| | |
|------|---|
| GL | GLAZING PANEL Vitro Solarban 60 (2) Acuity + Acuity |
| G.GL | GUARD GLAZING PANEL Vitro Solarban 60 (2) Acuity |
| SP1 | SPANDREL PANEL 1 I.C.D. OpacCoat 300 Colour: Basalt Grey #RAL 7012 |
| SP2 | SPANDREL PANEL 2 I.C.D. OpacCoat 300 Colour: Harmony Gray #3-820 |
| | MULLIONS PPG Duranar - Metal Coatings Colour: Black Metallic UC99630XL |
| MP1 | PREFIN METAL PANEL 1 MAC Metal Architectural Colour: Titanium White |
| MP2 | PREFIN METAL PANEL 2 MAC Metal Architectural (VERSA) Colour: Titanium Black |
| MP3 | PREFIN METAL PANEL 3 MAC Metal Architectural Colour: Cork |
| MP4 | PREFIN METAL PANEL 2 MAC Metal Architectural (MS1) Colour: Titanium Black |
| MF1 | PREFIN METAL FLASHING 1 Metalworks - #701 Colour: Polar White |
| MF2 | PREFIN METAL FLASHING 2 Metalworks - #30 Colour: Black |
| MP | LUMON METAL PANEL Metal - Colour: LUMON SYSTEM PANEL |
| LU | Glass - Clear Metal Components - Jet Black 9005 LOUVER PANEL |
| AR | ALUMINUM RAILING W/ GLAZING Seguro Aluminum Railings Glass - Clear |
| BR | MASONRY Brampton Brick: Contempo PRP Onyx MORTAR: Maximix Colour: #94C3 |

CONTRACTOR MUST CHECK AND VERIFY ALL DIMENSIONS AND JOB CONDITIONS BEFORE PROCEEDING WITH WORK.
ALL DRAWINGS MAY BE SUBJECT TO CHANGE DUE TO COMMENTS FROM MUNICIPAL DEPARTMENTS AND OTHER AGENCIES WITH AUTHORITY.
ALL DRAWINGS AND SPECIFICATIONS ARE THE PROPERTY OF THE ARCHITECTS AND MUST BE RETURNED AT THE COMPLETION OF THE WORK.
THE CONTRACTOR WORKING FROM DRAWINGS NOT SPECIFICALLY MARKED FOR CONSTRUCTION MUST ASSUME FULL RESPONSIBILITY AND BEAR COSTS FOR ANY CORRECTIONS OR DAMAGES RESULTING FROM HIS OR HER WORK.

KEY TO DETAIL LOCATION

| | |
|-----|----------------------|
| No. | DETAIL NUMBER |
| No. | DRAWING SHEET NUMBER |

| DRAWING SETS ISSUED | No. | DATE (DD.MM.YY) | BY |
|------------------------------|-----|-----------------|-------|
| FOR CLIENT REVIEW | 1 | 02.05.23 | KNYMH |
| ISSUED FOR SPA SUBMISSION 1 | 2 | 19.05.23 | KNYMH |
| ISSUED FOR COORDINATION | 3 | 18.07.23 | KNYMH |
| ISSUED FOR SPA 2 SUBMISSION | 4 | 08.09.23 | KNYMH |
| ISSUED FOR BUDGET SET | 5 | 02.10.23 | KNYMH |
| ISSUED FOR PERMIT SUBMISSION | 6 | 15.11.23 | KNYMH |
| ISSUED FOR TENDER | 7 | 18.12.23 | KNYMH |
| ISSUED FOR SPA SUBMISSION 3 | 8 | 12.01.24 | KNYMH |

ALL PREVIOUS ISSUES OF THIS DRAWING ARE SUPERSEDED

| REVISIONS TO DRAWING | No. | DATE (DD.MM.YY) | BY |
|----------------------|-----|-----------------|----|
| | | | |
| | | | |
| | | | |
| | | | |
| | | | |
| | | | |
| | | | |
| | | | |
| | | | |
| | | | |

BUILDING PERMIT NUMBER:
NOT FOR CONSTRUCTION WITHOUT PERMIT

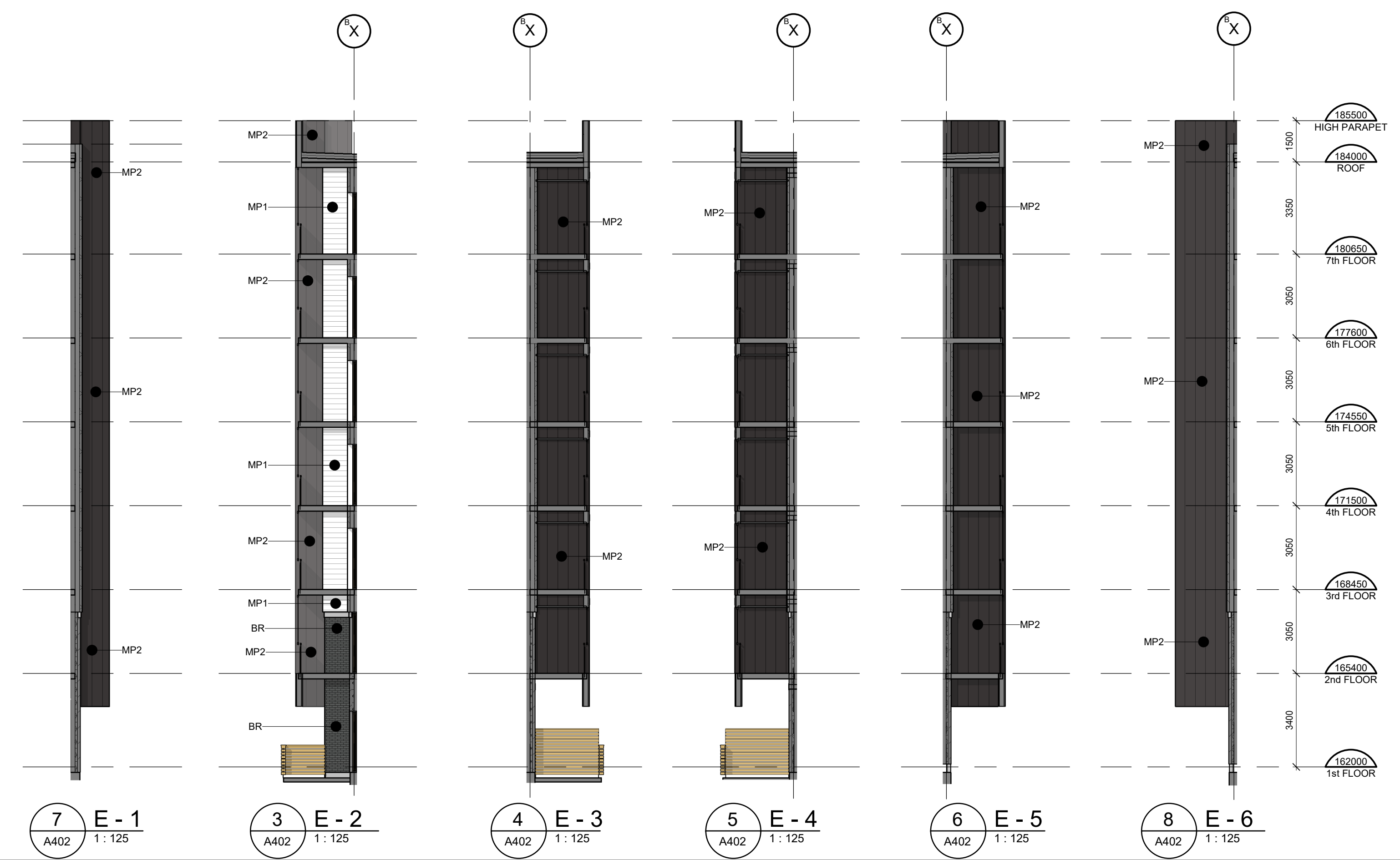
KNYMH INC.
1006 SKYVIEW DRIVE • SUITE 101
BURLINGTON, ONTARIO • L7P 0V1
T 905.639.6595
F 905.639.0394
www.knymh.com info@knymh.com

ONTARIO ASSOCIATION OF ARCHITECTS
PRZEMYSŁAW MYŚKOWSKI
LENGUE
7894

CLOCKWORK - Phase 2
3008 WILLIAM CUTMORE BLVD.
OAKVILLE, ONTARIO

DRAWING SHEET TITLE:
EAST/WEST ELEVATIONS

| | |
|--|-------------------------------|
| DRAWING SCALE: As indicated | PROJECT NUMBER: 22404 |
| DRAWN BY: Author | CHECKED BY: Checker |
| DRAWING VERSION: PLOT DATE: 2023-12-08 | DRAWING SHEET NUMBER: A402 |



7 E-1 A402 1:125
3 E-2 A402 1:125
4 E-3 A402 1:125
5 E-4 A402 1:125
6 E-5 A402 1:125
8 E-6 A402 1:125

NOTES:

MANDATORY WINDOW WALL REQUIREMENTS

1. THE WINDOW WALL SYSTEM MUST INCLUDE PRIMARY AND SECONDARY PLANES OF PROTECTION (WATER BARRIERS) AND VENTILATE AIR SPACES WITH PROVISION FOR POSITIVE DRAINAGE TO THE EXTERIOR IN A RAINDRAIN DESIGN.
2. THE DESIGN, TESTING AND INSTALLATION OF THE WINDOW WALL SYSTEM INCLUDING FRAMING MEMBERS, GLAZING UNITS, ANCHORAGE, SLAB EDGE COVERS, OPENING UNITS, DOORS AND THE TRANSITIONS TO THE ADJOINING ASSEMBLIES AND MATERIALS
 1. INCORPORATE THE RECOMMENDATIONS OF AN INDEPENDENT CONSULTANT (ARCHITECT OR PROFESSIONAL ENGINEER), HAVING EXPERTISE WITH THE DESIGN AND INSTALLATION OF WINDOW WALL SYSTEMS WHO HAS SPECIFICALLY ENGAGED FOR THIS PURPOSE.
 2. THE INDEPENDENT CONSULTANT HAS APPROVED THE CONSULTANT'S BUILDING DESIGN FOR THE WINDOW WALL SYSTEM FOR THE SPECIFIC PROJECT.
 3. THE WINDOW WALL SYSTEM AS INSTALLED ON THE PROJECT IS IN COMPLIANCE WITH THE ARCHITECTS BUILDING DESIGN.
3. THE MANUFACTURER OF THE WINDOW WALL SYSTEM PROVIDES SHOP DRAWINGS AND CALCULATIONS FOR THE WINDOW WALL SYSTEM TO BE USED ON THE SPECIFIC PROJECT FOR REVIEW BY THE CONSULTANT AND THE INDEPENDENT CONSULTANT, AND THE SHOP DRAWINGS AND CALCULATIONS HAVE BEEN SEALED BY A PROFESSIONAL ENGINEER RETAINED BY THE MANUFACTURER RESPECTING STRUCTURAL INTEGRITY, AIR BARRIER CONTINUITY AND WATER INGRESS MANAGEMENT.
4. THE MANUFACTURER OF THE WINDOW WALL SYSTEM PROVIDES THE CONSULTANTS AND THE INDEPENDENT CONSULTANT WITH TEST REPORTS FOR AIR LEAKAGE AND WATER PENETRATION IN COMPLIANCE WITH THE REQUIREMENTS OF THE APPLICABLE VERSION OF CSA A440, OR OTHER STANDARD APPLICABLE AT THE TIME AND PLACE OF CONSTRUCTION, AND THE CONSULTANTS AND THE INDEPENDENT CONSULTANT HAVE EACH REVIEWED AND ACCEPTED THESE REPORTS AS APPROPRIATE FOR THE SPECIFIC PROJECT.
5. A FULL SCALE MOCK-UP OF THE SPECIFIC WINDOW WALL SYSTEM FOR THE PROJECT, INCLUDING FRAMING MEMBERS, GLAZING UNITS, ANCHORAGE, SLAB EDGE COVERS, OPENING UNITS, DOORS AND TRANSITIONS TO ADJOINING ASSEMBLIES AND MATERIALS, HAS BEEN SUCCESSFULLY TESTED RESPECTING AIR AND WATER INFILTRATION AND ENVIRONMENTAL SEPARATION PERFORMANCE IN ACCORDANCE WITH RECOGNIZED INDUSTRY STANDARDS AS DETERMINED, REVIEWED AND APPROVED BY THE INDEPENDENT CONSULTANT.
6. THE COMPLETED WINDOW WALL SYSTEM AS DESIGNED, CONSTRUCTED AND INSTALLED IS WARRANTED RESPECTING AIR AND WATER INFILTRATION TO THE SATISFACTION OF THE INDEPENDENT CONSULTANT.
7. THE ENTIRE WINDOW WALL SYSTEM AS DESIGNED, CONSTRUCTED AND INSTALLED IS WARRANTED RESPECTING AIR LEAKAGE AND WATER INGRESS BY THE WINDOW WALL MANUFACTURER FOR A PERIOD OF NOT LESS THAN 5 YEARS FOLLOWING SUBSTANTIAL PERFORMANCE OF THE PROJECT OR REGISTRATION IN THE CASE OF A CONDOMINIUM, WHICHEVER COMES LATER. THE WARRANTY PROVIDED IS TO COVER ALL OF THE LABOUR AND MATERIALS REQUIRED TO REPAIR OR REPLACE THE WINDOW WALL SYSTEM SHOULD AIR LEAKAGE OR WATER INGRESS OCCUR DURING THE WARRANTY PERIOD.
8. THE INDEPENDENT CONSULTANT SHALL PROVIDE A PROFESSIONAL'S SEALED LETTER CONFIRMING THAT THEY WILL COMPLY WITH THE MANDATORY WINDOW WALL REQUIREMENTS ABOVE. THIS LETTER SHALL BE SUBMITTED AT THE TIME OF SHOP DRAWING SUBMISSION.

NOTES:

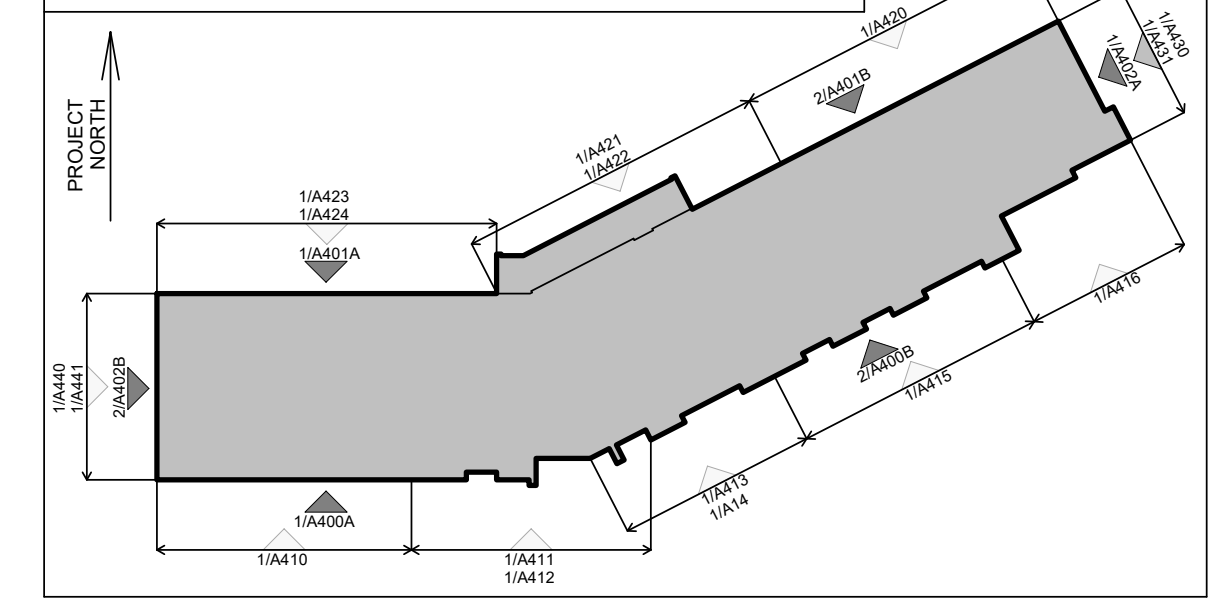
ALL GUARDS TO MEET REQUIREMENTS OF THE O.B.C. 2012. MANUFACTURER/SUPPLIER TO PROVIDE ENGINEERED, STAMPED SHOP DRAWINGS COMPLETE WITH MOUNTING DETAILS.
GUARDS SHALL COMPLY WITH O.B.C. 3.3.1.17, 3.4.6.5 AND 4.1.10.
GUARDS SHALL COMPLY WITH O.B.C. 4.3.6.
ALL GLASS IN GUARDS TO COMPLY WITH O.B.C. SB-13.
GLAZING LOCATED 1070 OR LESS ABOVE FINISHED FLOOR AND MORE THAN 600mm ABOVE GRADE SHALL BE DESIGNED AS A GUARD AND SHALL COMPLY WITH ALL REQUIREMENTS OF THE O.B.C.
ALL WINDOWS TO MEET THE REQUIREMENTS OF THE O.B.C. 2012 ARTICLE 3.3.4.8. PROTECTION OF WINDOWS IN APARTMENT BUILDINGS. WINDOW SUPPLIER TO PROVIDE ENGINEERED STAMPED SHOP DRAWINGS FOR REVIEW.
ALL DOOR AND WINDOW FRAMES AND SASHES TO MEET THE REQUIREMENTS OF THE O.B.C. 2012 ARTICLE 3.1.5.4. COMBUSTIBLE GLAZING AND SKYLIGHTS.
REFER TO NOTICE IMPACT STUDY FOR ADDITIONAL GLAZING REQUIREMENTS.
ENSURE CO-ORDINATION WITH MECHANICAL DRAWINGS FOR EXHAUST WALL BOX LOCATIONS WITHIN ALUMINUM SCREENS.
ALL SPANDREL GLASS PANELS ARE TO HAVE A MINIMUM R-VALUE OF R-10, C/W METAL BACK PAN.
DOOR AND WINDOW LOCATIONS, DIMENSIONS, DETAILS AND BUILDING MATERIALS MAY VARY DEPENDING ON FINAL BUILDING LAYOUT, AND SHOWN FOR INFORMATION PURPOSES ONLY.
WINDOW SUPPLIER/INSTALLER IS TO PROVIDE DEFLECTION CONNECTION FOR ALL CURTAIN WALLS / WINDOW WALLS. (REFER TO STRUCTURAL DRAWINGS FOR REQUIRED DEFLECTION).
ALL WINDOWS AND GLASS DOORS TO MEET MINIMUM ENERGY RATING FOR WINDOWS IN ZONE 3 OF THE O.B.C. SB-10.

| | |
|-------------------------------|--|
| NON-METAL FRAME WINDOWS/DOORS | 0.325 MAX U VALUE 0.41 SOLAR HEAT GAIN COEFFICIENT |
| METAL FRAME (ALUM.) WINDOWS | 0.325 MAX U VALUE 0.41 SOLAR HEAT GAIN COEFFICIENT |
| METAL FRAME DOORS | 0.325 MAX U VALUE 0.41 SOLAR HEAT GAIN COEFFICIENT |
| INSULATED GLASS UNIT ASSEMBLY | 0.29 U-VALUE WINTER 0.27 U-VALUE SUMMER 0.41 SOLAR HEAT GAIN COEFFICIENT |

LEGEND

| | |
|------|------------------------------|
| GL | GLAZING PANEL |
| G.GL | GUARD GLAZING PANEL |
| SP-1 | SPANDREL/METAL PANEL - LIGHT |
| SP-2 | SPANDREL/METAL PANEL - DARK |
| MP1 | PREFIN METAL PANEL - WHITE |
| MP-2 | PREFIN METAL PANEL - DARK |
| MP3 | PREFIN METAL PANEL - WOOD |
| LU | LUMON SYSTEM PANEL |
| GGL | ALUMINUM RAILING W/ GLASS |
| BR | BRICK |

ELEVATION KEY PLAN



CONTRACTOR MUST CHECK AND VERIFY ALL DIMENSIONS AND JOB CONDITIONS BEFORE PROCEEDING WITH WORK
 ALL DRAWINGS MAY BE TO BE SUBJECT TO CHANGE DUE TO COMMENTS FROM MUNICIPAL DEPARTMENTS AND OTHER AGENCIES WITH AUTHORITY
 ALL DRAWINGS AND SPECIFICATIONS ARE THE PROPERTY OF THE ARCHITECTS AND MUST BE RETURNED AT THE COMPLETION OF THE WORK
 THE CONTRACTOR WORKING FROM DRAWINGS NOT SPECIFICALLY MARKED FOR CONSTRUCTION MUST ASSUME FULL RESPONSIBILITY AND BEAR COSTS FOR ANY CORRECTIONS OR DAMAGES RESULTING FROM HIS OR HER WORK

KEY TO DETAIL LOCATION

| | |
|-----|----------------------|
| No. | DETAIL NUMBER |
| No. | DRAWING SHEET NUMBER |

| DRAWING SETS ISSUED | No. | DATE (DD.MM.YY) | BY |
|------------------------------|-----|-----------------|-------|
| FOR CLIENT REVIEW | 1 | 02.05.23 | KNYMH |
| ISSUED FOR SPA SUBMISSION 1 | 2 | 19.05.23 | KNYMH |
| ISSUED FOR COORDINATION | 3 | 18.07.23 | KNYMH |
| ISSUED FOR SPA 2 SUBMISSION | 4 | 08.09.23 | KNYMH |
| ISSUED FOR BUDGET SET | 5 | 02.10.23 | KNYMH |
| ISSUED FOR PERMIT SUBMISSION | 6 | 15.11.23 | KNYMH |
| ISSUED FOR TENDER | 7 | 18.12.23 | KNYMH |
| ISSUED FOR SPA SUBMISSION 3 | 8 | 12.01.24 | KNYMH |

ALL PREVIOUS ISSUES OF THIS DRAWING ARE SUPERSEDED

| REVISIONS TO DRAWING | No. | DATE (DD.MM.YY) | BY |
|----------------------|-----|-----------------|----|
| | | | |
| | | | |
| | | | |
| | | | |
| | | | |
| | | | |
| | | | |
| | | | |
| | | | |
| | | | |

BUILDING PERMIT NUMBER:
 NOT FOR CONSTRUCTION WITHOUT PERMIT

KNYMH
 ARCHITECTURE • SOLUTIONS

KNYMH INC.
 1006 SKYVIEW DRIVE • SUITE 101
 BURLINGTON, ONTARIO • L7P 0V1
 T 905.639.6595
 F 905.639.0394
 www.knymh.com info@knymh.com

ONTARIO ASSOCIATION OF ARCHITECTS
 OF
 PRZEMYSŁAW MYSZKOWSKI
 LEAGUE
 7984

mattamyHOMES

CLOCKWORK - Phase 2
 3008 WILLIAM CUTMORE BLVD.
 OAKVILLE, ONTARIO

DRAWING SHEET TITLE:
ENLARGED EAST ELEVATION - 1

DRAWING SCALE: As indicated
 PROJECT NUMBER: **22404**

DRAWN BY: Author
 CHECKED BY: Checker
 DRAWING SHEET NUMBER: **A430**
 PLOT DATE: 2023-12-08



1 ENLARGED EAST ELEVATION - 1
 A430 1:50