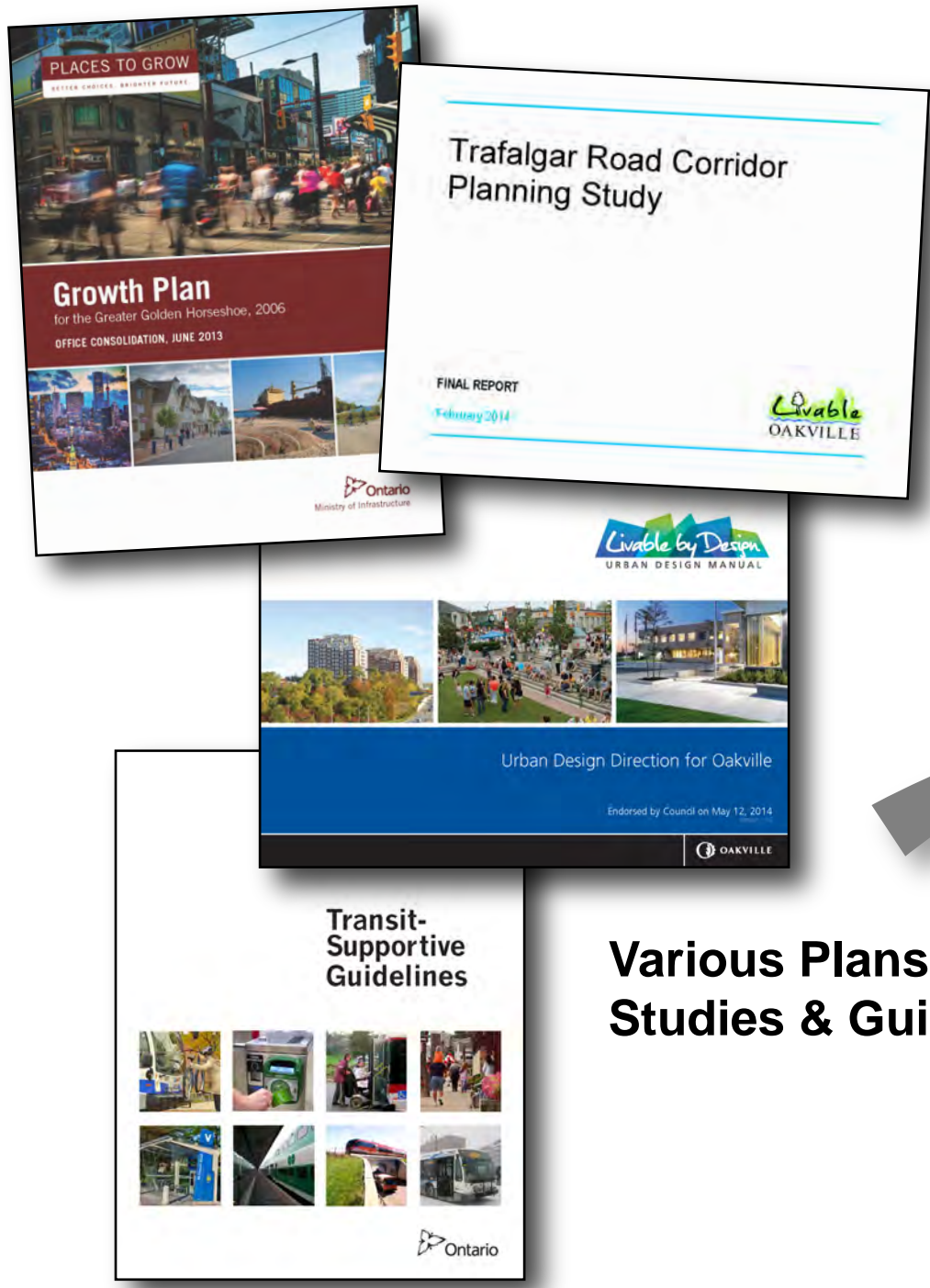
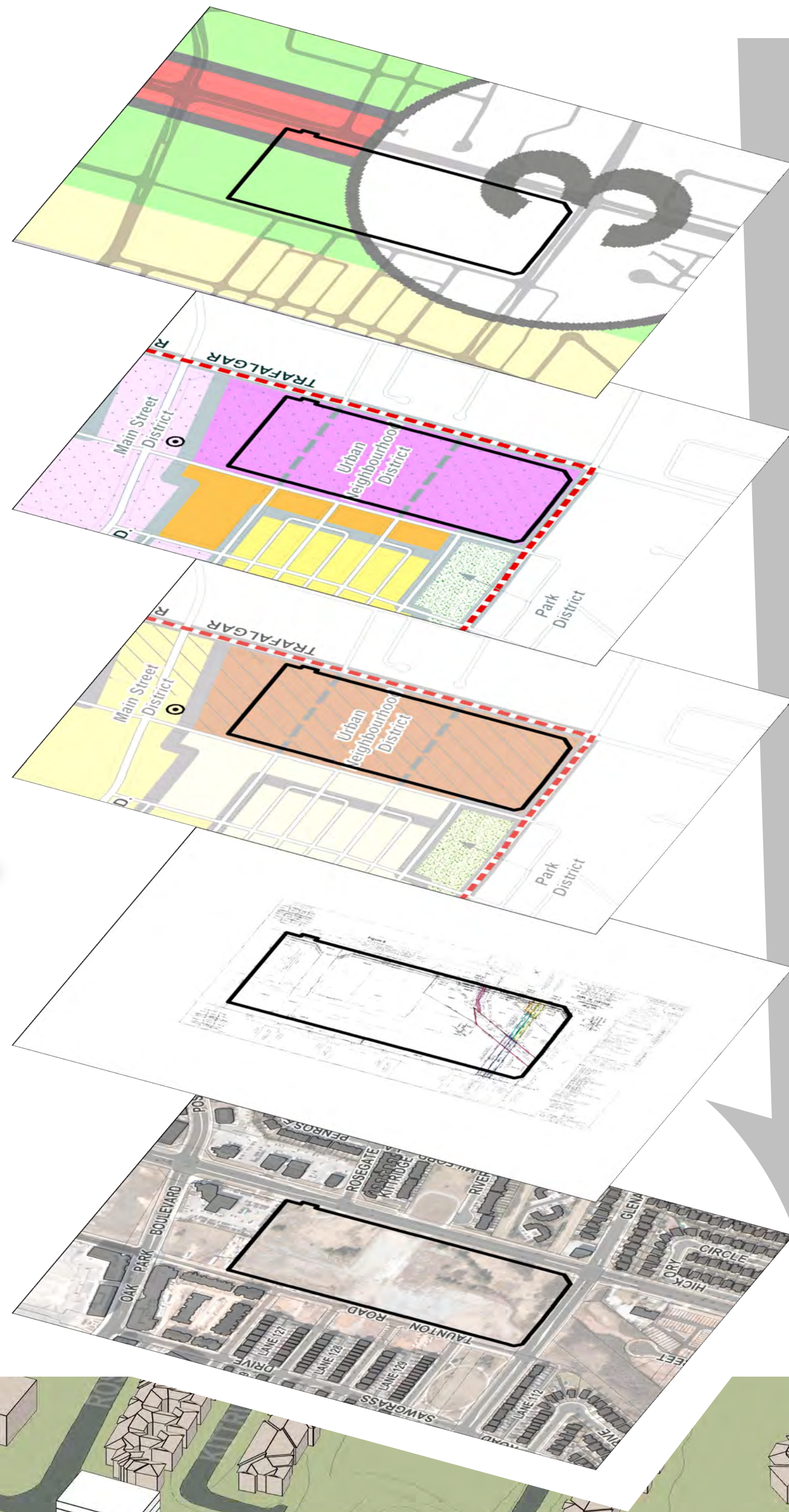


Factors considered during refinement of the Master Plan



Various Plans, Studies & Guidelines



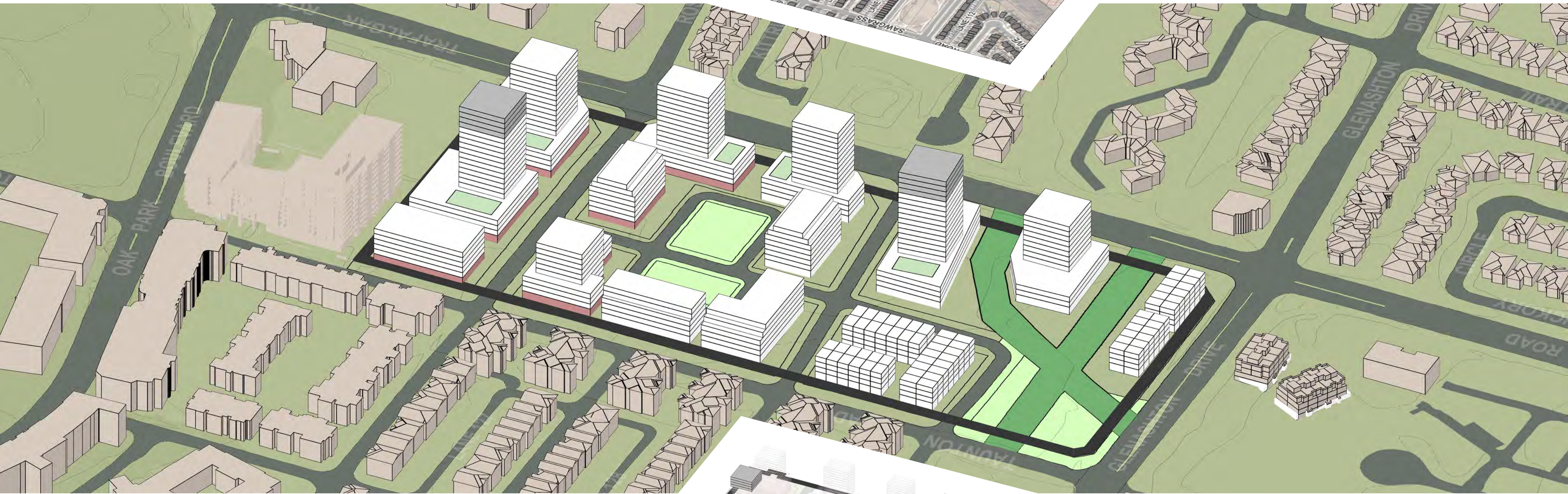
Halton Regional Official Plan
Map 3 - Transportation
(identifies Trafalgar Road as a higher order transit corridor)

Livable Oakville Official Plan
Schedule M1

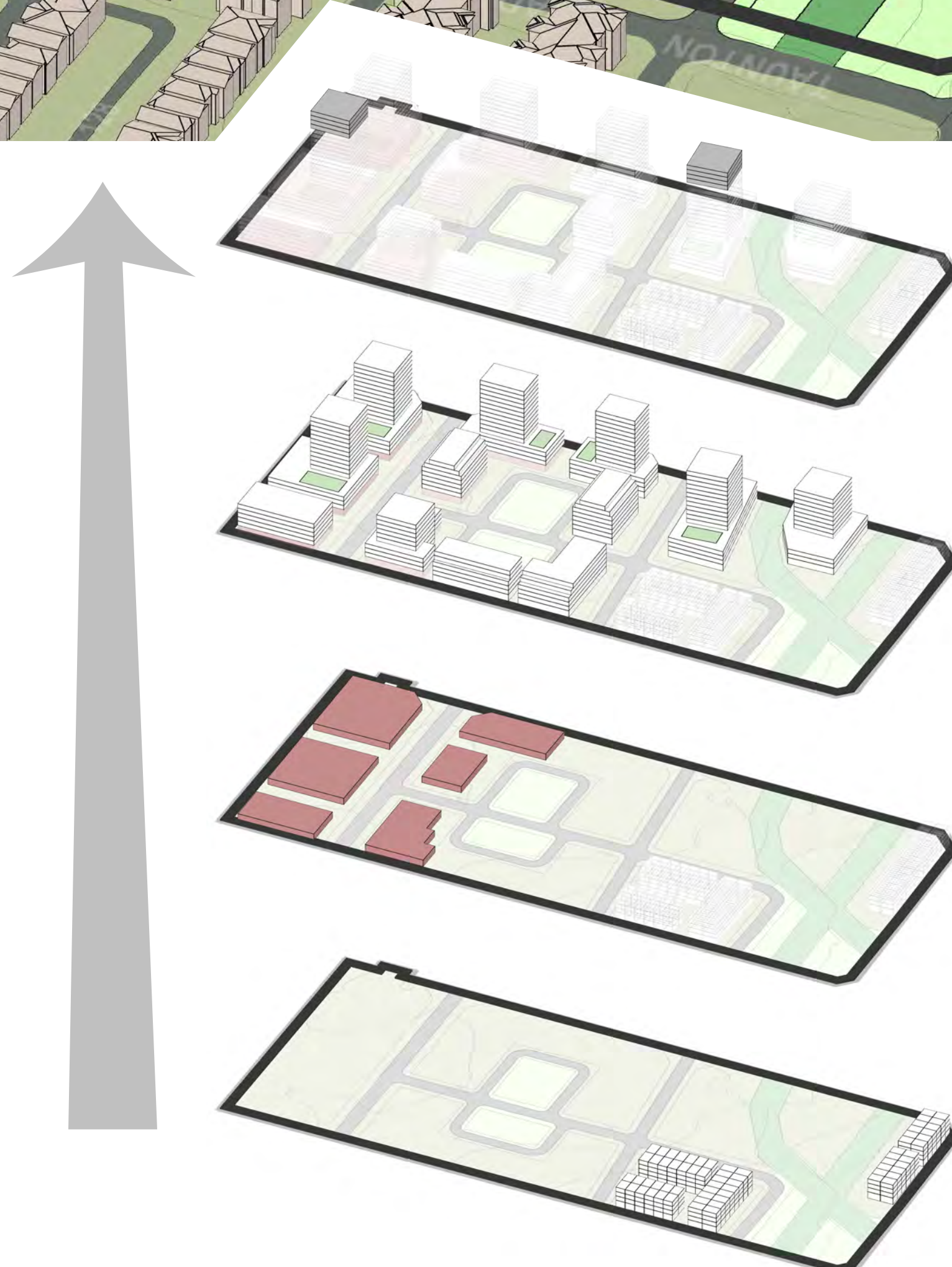
Livable Oakville Official Plan
Schedule M2

Existing Site Constraints
Road right-of-ways
Utility right-of-ways

Existing Neighbourhood Context
Street Network
Built Form
Land Uses
Parks



Building up the components of the Master Plan



Potential for Bonusing
in return for developer-provided public benefits

Residential Apartments

Street-oriented Retail at Ground Level

Townhouses