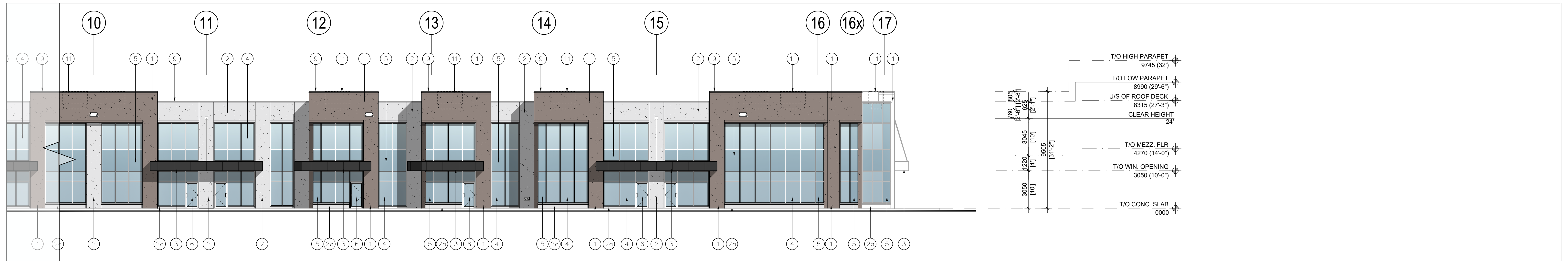
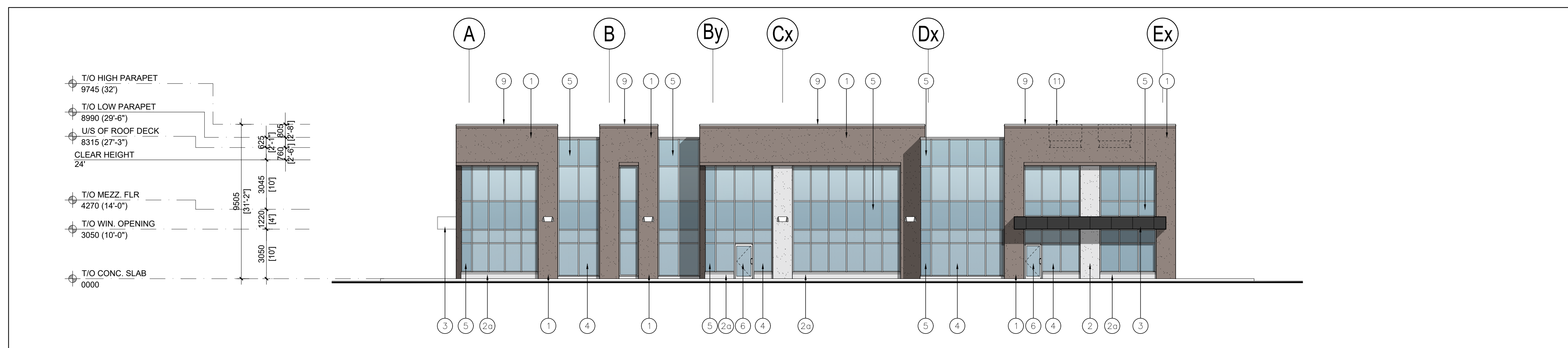


1 PART OF SOUTH ELEVATION
A-3.0A 1:150



2 PART OF SOUTH ELEVATION
A-3.0A 1:150



3 EAST ELEVATION
A-3.0A 1:150

EXTERIOR MATERIAL LEGEND

- 1 ARCH. PRECAST WALL PANEL W/ SMOOTH FINISH & SMOOTH RECESSED BANDS & GROOVES PER ELEVATIONS & SECTIONS. COLOUR: TBD
- 2 INSULATED PRECAST WALL PANEL W/ SMOOTH RECESSED BANDS & GROOVES PER ELEVATIONS & SECTIONS. COLOUR: TBD
- 2a ARCH. PRECAST WALL PANEL W/ SMOOTH FINISH & SMOOTH RECESSED BANDS & GROOVES AS PER ELEVATIONS & SECTIONS. COLOUR: TBD
- 2b INSULATED PRECAST WALL PANEL W/ SMOOTH FINISH & SMOOTH RECESSED BANDS & GROOVES AS PER ELEVATIONS & SECTIONS. COLOUR: TBD
- 3 CANOPY CLAD IN ALUMINUM COMPOSITE PANELS. COLOUR: CHARCOAL
- 4 THERMAL DOUBLE GLAZING (GREY TINT) IN PREFINISHED ALUMINUM FRAMES. COLOUR OF CAPS: CHARCOAL ANODIZED ALUMINUM
- 5 SPANDREL GLAZING IN PREFINISHED ALUMINUM FRAMES. COLOUR OF SPANDREL: GREY. COLOUR OF CAPS: CHARCOAL ANODIZED ALUMINUM
- 6 CLEAR TEMPERED THERMAL GLASS AND ALUMINUM DOOR(S). COLOUR OF ALUMINUM TO MATCH WINDOW CAPS.
- 7 INSULATED HOLLOW METAL MAN DOOR IN THERMAL PRESSED STEEL FRAME. DOOR AND FRAME PAINTED TO MATCH ADJACENT INSULATED PRECAST.
- 8 RESERVED
- 9 PREFINISHED METAL CAP FLASHING. COLOUR TO MATCH PRECAST BELOW.
- 10 PREFINISHED INSULATED HOLLOW METAL OVERHEAD DRIVE-IN DOOR. C/W 3 VIEWING WINDOWS. COLOUR TO MATCH ADJACENT PRECAST PANELS. BENT STEEL JAMBS TO BE HOT DIP GALVANIZED. C/W 2 200mm DIA. x 1500mm HIGH HOT DIP GALVANIZED PIPE BOLLARDS.
- 11 ROOF TOP UNIT

No.	ISSUED	DATE
1	ISSUED FOR SPA	SEPT. 07, 2023
2	ISSUED FOR SPA	APR. 12, 2024

No.	REVISION	DATE

BALDASSARRA
Architects Inc.

30 Great Gulf Drive, Unit 20 | Concord ON | L4K 0K7
T. 905.660.0722 | www.baldassarra.ca

OWNERS INFORMATION:



576 Bronte Road

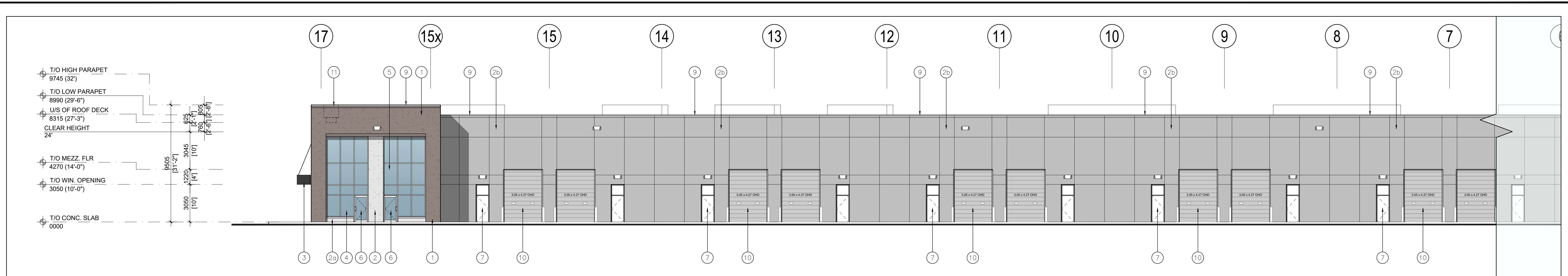
Oakville, ON

SOUTH & EAST ELEVATIONS - BLDG A

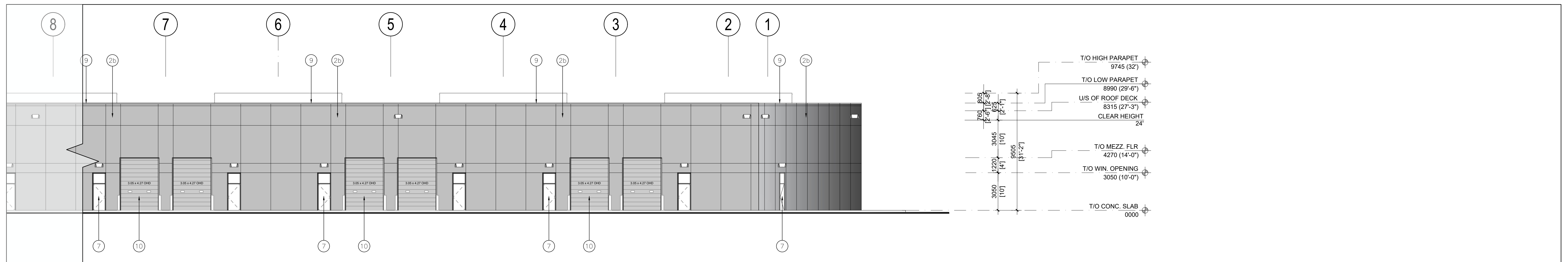
DATE:	DRAWN BY:	CHECKED:	SCALE:
JULY 2023	MP/JZ	JP	1:300

PROJECT No. 23-01 DRAWING No. A-3.0A

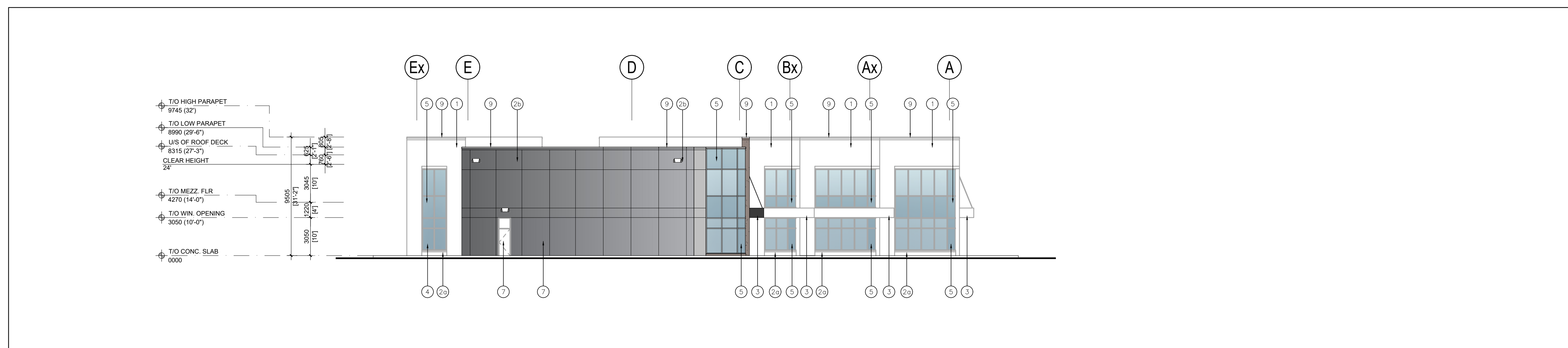
A-3.0A



1 PART OF NORTH ELEVATION
A-3.1A 1:150



2 PART OF NORTH ELEVATION
A-3.1A 1:150



3 WEST ELEVATION
A-3.1A 1:150

EXTERIOR MATERIAL LEGEND

- 1 ARCH. PRECAST WALL PANEL W/ SMOOTH FINISH & SMOOTH RECESSED BANDS & GROOVES PER ELEVATIONS & SECTIONS. COLOUR: TBD
- 2 INSULATED PRECAST WALL PANEL W/ SMOOTH RECESSED BANDS & GROOVES PER ELEVATIONS & SECTIONS. COLOUR: TBD
- 2a ARCH. PRECAST WALL PANEL W/ SMOOTH FINISH & SMOOTH RECESSED BANDS & GROOVES AS PER ELEVATIONS & SECTIONS. COLOUR: TBD
- 2b INSULATED PRECAST WALL PANEL W/ SMOOTH FINISH & SMOOTH RECESSED BANDS & GROOVES AS PER ELEVATIONS & SECTIONS. COLOUR: CHARCOAL
- 3 CANOPY CLAD IN ALUMINUM COMPOSITE PANELS. COLOUR: CHARCOAL
- 4 THERMAL DOUBLE GLAZING (GREY TINT) IN PREFINISHED ALUMINUM FRAMES. COLOUR OF CAPS: CHARCOAL ANODIZED ALUMINUM
- 5 SPANDREL GLAZING IN PREFINISHED ALUMINUM FRAMES. COLOUR OF SPANDREL: GREY. COLOUR OF CAPS: CHARCOAL ANODIZED ALUMINUM
- 6 CLEAR TEMPERED THERMAL GLASS AND ALUMINUM DOOR(S). COLOUR OF ALUMINUM TO MATCH WINDOW CAPS.
- 7 INSULATED HOLLOW METAL MAN DOOR IN THERMAL PRESSED STEEL FRAME. DOOR AND FRAME PAINTED TO MATCH ADJACENT INSULATED PRECAST.
- 8 RESERVED
- 9 PREFINISHED METAL CAP FLASHING. COLOUR TO MATCH PRECAST BELOW.
- 10 PREFINISHED INSULATED HOLLOW METAL OVERHEAD DRIVE-IN DOOR. C/W 3 VIEWING WINDOWS. COLOUR TO MATCH ADJACENT PRECAST PANELS. BENT STEEL JAMBS TO BE HOT DIP GALVANIZED. C/W 2 200mm DIA. x 1500mm HIGH HOT DIP GALVANIZED PIPE BOLLARDS.
- 11 ROOF TOP UNIT

No.	ISSUED	DATE
1	ISSUED FOR SPA	SEPT. 07, 2023
2	ISSUED FOR SPA	APR. 12, 2024

No.	REVISION	DATE

BALDASSARRA
Architects Inc.
30 Great Gulf Drive, Unit 20 | Concord ON | L4K 0K7
T. 905.660.0722 | www.baldassarra.ca
OWNERS INFORMATION:



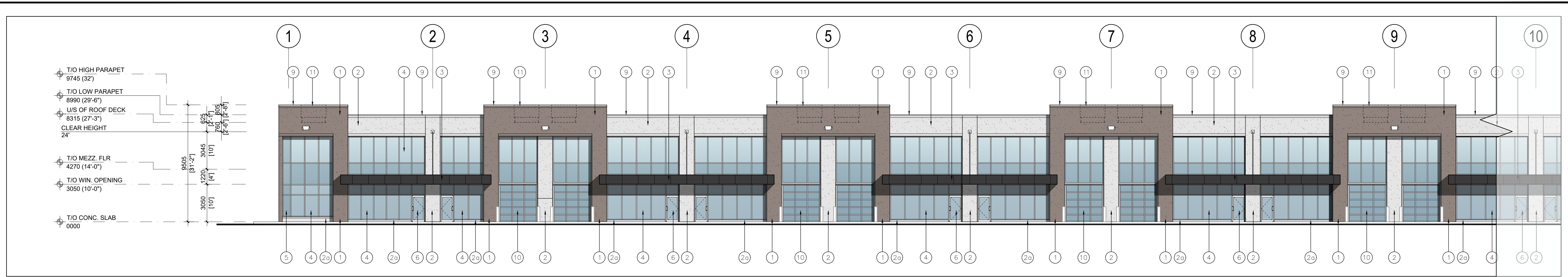
576 Bronte Road

Oakville, ON

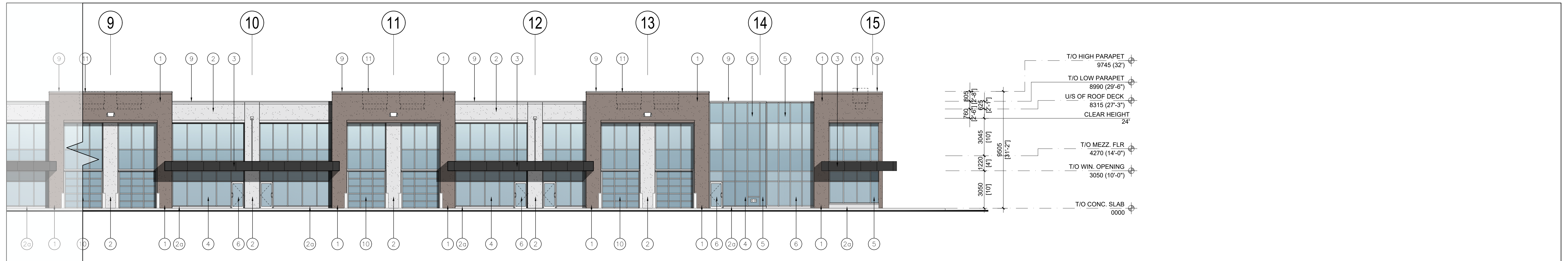
NORTH, WEST ELEVATIONS - BLDG A

DATE:	DRAWN BY:	CHECKED:	SCALE:
JULY 2023	MP/JZ	JP	1:300

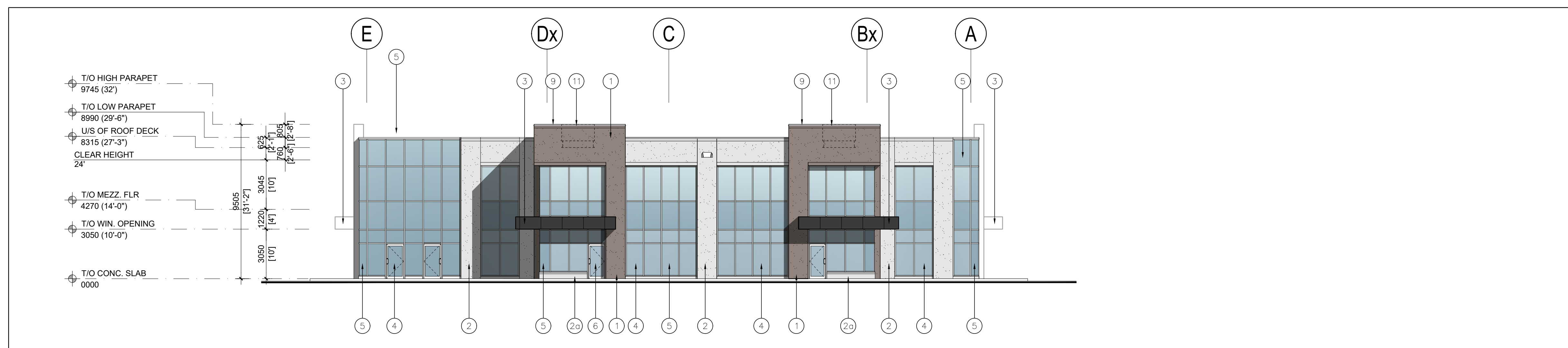
23-01 **A-3.1A**



1 PART OF SOUTH ELEVATION
A-3.0B 1:150



2 PART OF SOUTH ELEVATION
A-3.0B 1:150



3 EAST ELEVATION
A-3.0B 1:150

EXTERIOR MATERIAL LEGEND

- 1 ARCH. PRECAST WALL PANEL W/ SMOOTH FINISH & SMOOTH RECESSED BANDS & GROOVES PER ELEVATIONS & SECTIONS. COLOUR: TBD
- 2 INSULATED PRECAST WALL PANEL W/ SMOOTH FINISH & SMOOTH RECESSED BANDS & GROOVES PER ELEVATIONS & SECTIONS. COLOUR: TBD
- 2a INSULATED PRECAST WALL PANEL W/ SMOOTH FINISH & SMOOTH RECESSED BANDS & GROOVES AS PER ELEVATIONS & SECTIONS. COLOUR: TBD
- 3 CANOPY CLAD IN ALUMINUM COMPOSITE PANELS. COLOUR: CHARCOAL
- 4 THERMAL DOUBLE GLAZING (GREY TINT) IN PREFINISHED ALUMINUM FRAMES. COLOUR OF CAPS: CHARCOAL ANODIZED ALUMINUM
- 5 SPANDREL GLAZING IN PREFINISHED ALUMINUM FRAMES. COLOUR OF SPANDREL: GREY. COLOUR OF CAPS: CHARCOAL ANODIZED ALUMINUM
- 6 CLEAR TEMPERED THERMAL GLASS AND ALUMINUM DOOR(S). COLOUR OF ALUMINUM TO MATCH WINDOW CAPS.
- 7 INSULATED HOLLOW METAL MAN DOOR IN THERMAL PRESSED STEEL FRAME. DOOR AND FRAME PAINTED TO MATCH ADJACENT INSULATED PRECAST.
- 8 RESERVED
- 9 PREFINISHED METAL CAP FLASHING. COLOUR TO MATCH PRECAST BELOW.
- 10 ALUMINUM GLASS OVERHEAD DRIVE-IN DOOR. STEEL JAMBS TO BE HOT DIP GALVANIZED. CW 2 200mm DIA. x 1500mm HIGH HOT DIP GALVANIZED PIPE BOLLARDS.
- 10a PREFINISHED INSULATED HOLLOW METAL OVERHEAD DRIVE-IN DOOR. CW 3 VIEWING WINDOWS. COLOUR TO MATCH ADJACENT PRECAST PANELS. BENT STEEL JAMBS TO BE HOT DIP GALVANIZED. CW 2 200mm DIA. x 1500mm HIGH HOT DIP GALVANIZED PIPE BOLLARDS.
- 11 ROOF TOP UNIT

No.	ISSUED	DATE
1	ISSUED FOR SPA	SEPT. 07, 2023
2	ISSUED FOR SPA	APR. 12, 2024

No.	REVISION	DATE

BALDASSARRA
Architects Inc.

30 Great Gulf Drive, Unit 20 | Concord ON | L4K 0K7
T. 905.660.0722 | www.baldassarra.ca

OWNERS INFORMATION:



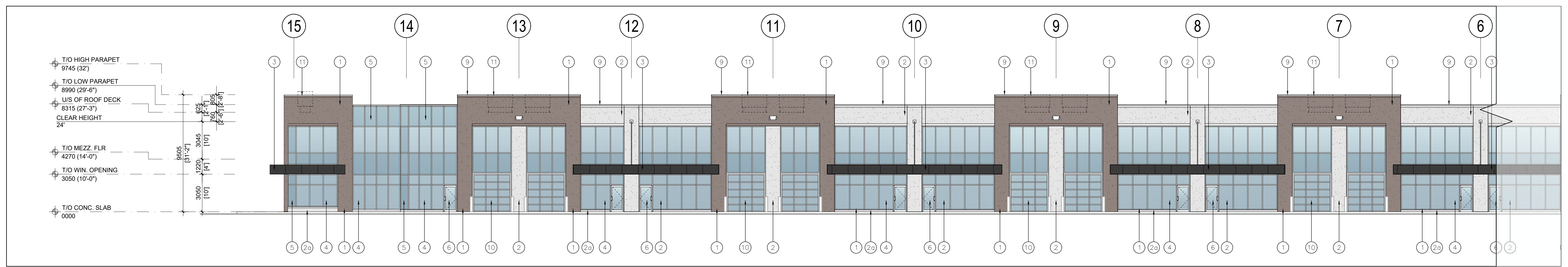
576 Bronte Road

Oakville, ON

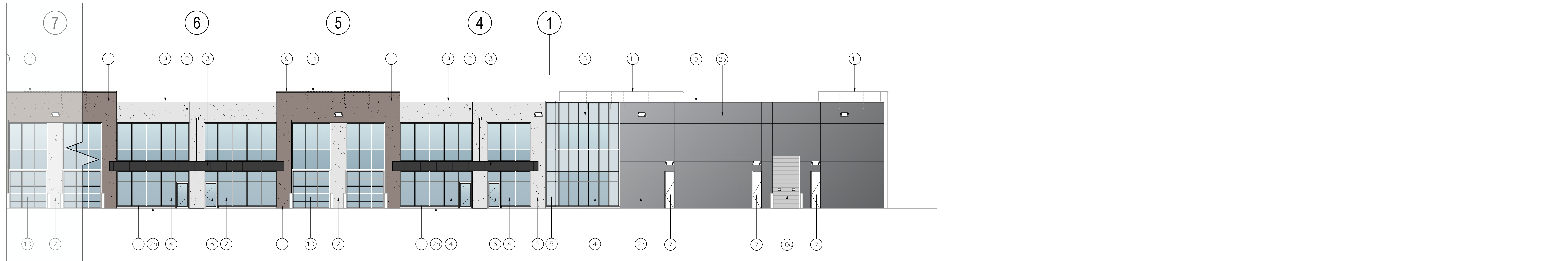
**SOUTH, EAST
ELEVATIONS - BLDG B**

DATE:	DRAWN BY:	CHECKED:	SCALE:
JULY 2023	MP/JZ	JP	1:300

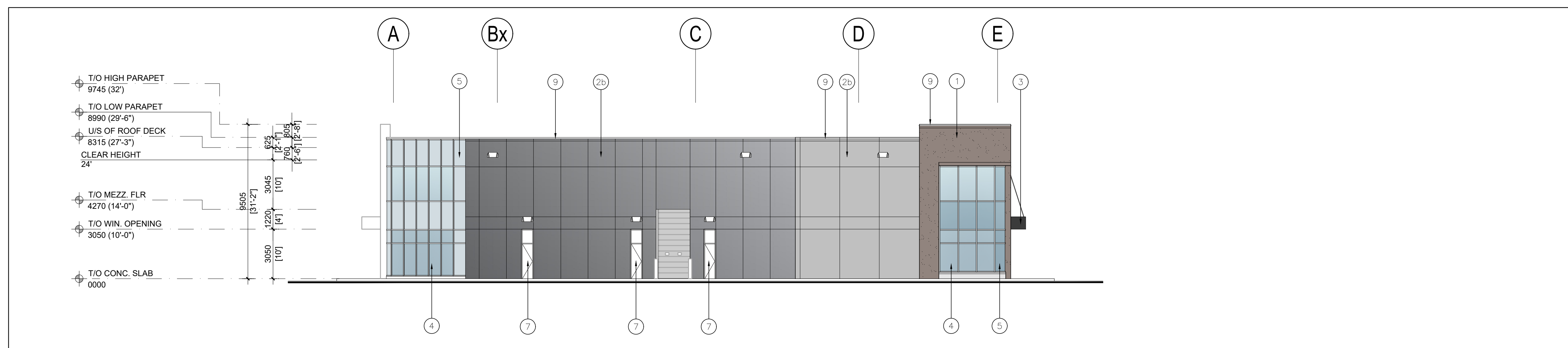
PROJECT No. 23-01
DRAWING No. **A-3.0B**



1 PART OF NORTH ELEVATION
A-3.1B 1:150



2 PART OF NORTH ELEVATION
A-3.1B 1:150



3 WEST ELEVATION
A-3.1B 1:150

EXTERIOR MATERIAL LEGEND

- 1 ARCH. PRECAST WALL PANEL W/ SMOOTH FINISH & SMOOTH RECESSED BANDS & GROOVES PER ELEVATIONS & SECTIONS. COLOUR: TBD
- 2 INSULATED PRECAST WALL PANEL W/ SMOOTH FINISH & SMOOTH RECESSED BANDS & GROOVES PER ELEVATIONS & SECTIONS. COLOUR: TBD
- 20 ARCH. PRECAST WALL PANEL W/ SMOOTH FINISH & SMOOTH RECESSED BANDS & GROOVES AS PER ELEVATIONS & SECTIONS. COLOUR: TBD
- 2b INSULATED PRECAST WALL PANEL W/ SMOOTH FINISH & SMOOTH RECESSED BANDS & GROOVES AS PER ELEVATIONS & SECTIONS. COLOUR: CHARCOAL
- 3 CANOPY CLAD IN ALUMINUM COMPOSITE PANELS. COLOUR: CHARCOAL ANODIZED ALUMINUM
- 4 THERMAL DOUBLE GLAZING (GREY TINT) IN PREFINISHED ALUMINUM FRAMES. COLOUR OF CAPS: CHARCOAL ANODIZED ALUMINUM
- 5 SPANDREL GLAZING IN PREFINISHED ALUMINUM FRAMES. COLOUR OF SPANDREL: GREY. COLOUR OF CAPS: CHARCOAL ANODIZED ALUMINUM
- 6 CLEAR TEMPERED THERMAL GLASS AND ALUMINUM DOOR(S). COLOUR OF ALUMINUM TO MATCH WINDOW CAPS.
- 7 INSULATED HOLLOW METAL MAN DOOR IN THERMAL PRESSED STEEL FRAME. DOOR AND FRAME PAINTED TO MATCH ADJACENT INSULATED PRECAST.
- 8 RESERVED
- 9 PREFINISHED METAL CAP FLASHING. COLOUR TO MATCH PRECAST BELOW.
- 10 ALUMINUM GLASS OVERHEAD DRIVE-IN DOOR. STEEL JAMES TO BE HOT DIP GALVANIZED. CW 2 200mm DIA. x 1500mm HIGH HOT DIP GALVANIZED PIPE BOLLARDS.
- 10a PREFINISHED INSULATED HOLLOW METAL OVERHEAD DRIVE-IN DOOR. CW 3 VIEWING WINDOWS. COLOUR TO MATCH ADJACENT PRECAST PANELS. BENT STEEL JAMES TO BE HOT DIP GALVANIZED. CW 2 200mm DIA. x 1500mm HIGH HOT DIP GALVANIZED PIPE BOLLARDS.
- 11 ROOF TOP UNIT

No.	ISSUED	DATE
1	ISSUED FOR SPA	SEPT. 07, 2023
2	ISSUED FOR SPA	APR. 12, 2024

No.	REVISION	DATE

BALDASSARRA
Architects Inc.

30 Great Gulf Drive, Unit 20 | Concord ON | L4K 0K7
T. 905.660.0722 | www.baldassarra.ca

OWNERS INFORMATION:



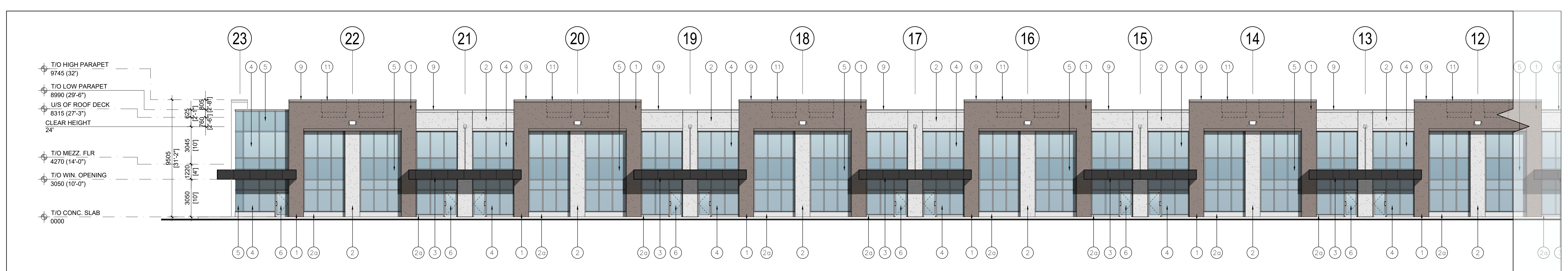
576 Bronte Road

Oakville, ON

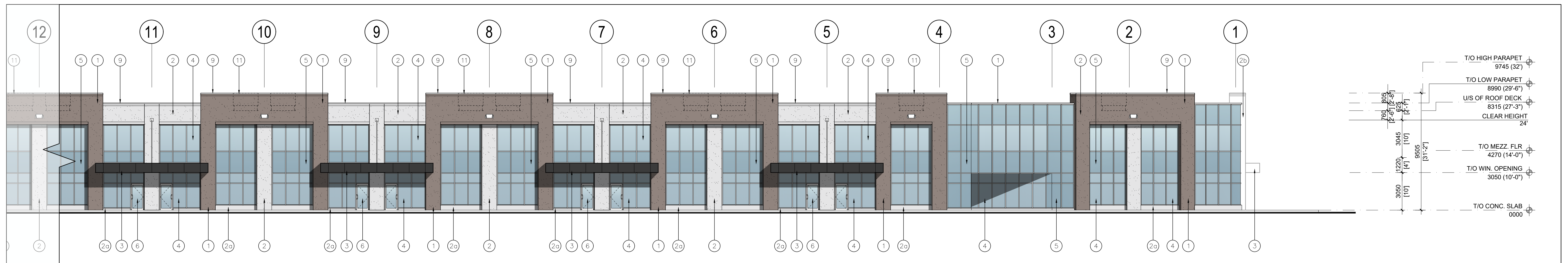
NORTH, WEST ELEVATIONS - BLDG B

DATE:	DRAWN BY:	CHECKED:	SCALE:
JULY 2023	MP/JZ	JP	1:300

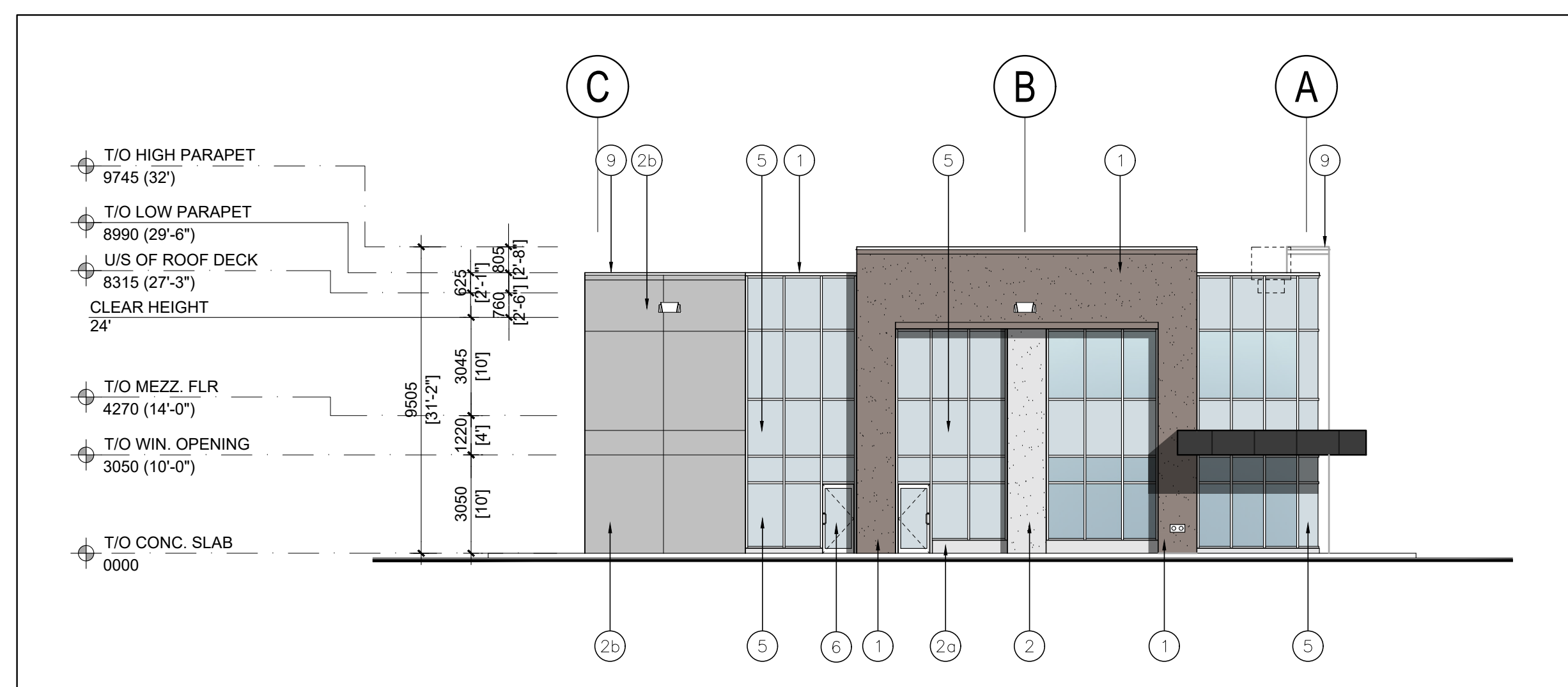
PROJECT No. 23-01
DRAWING No. **A-3.1B**



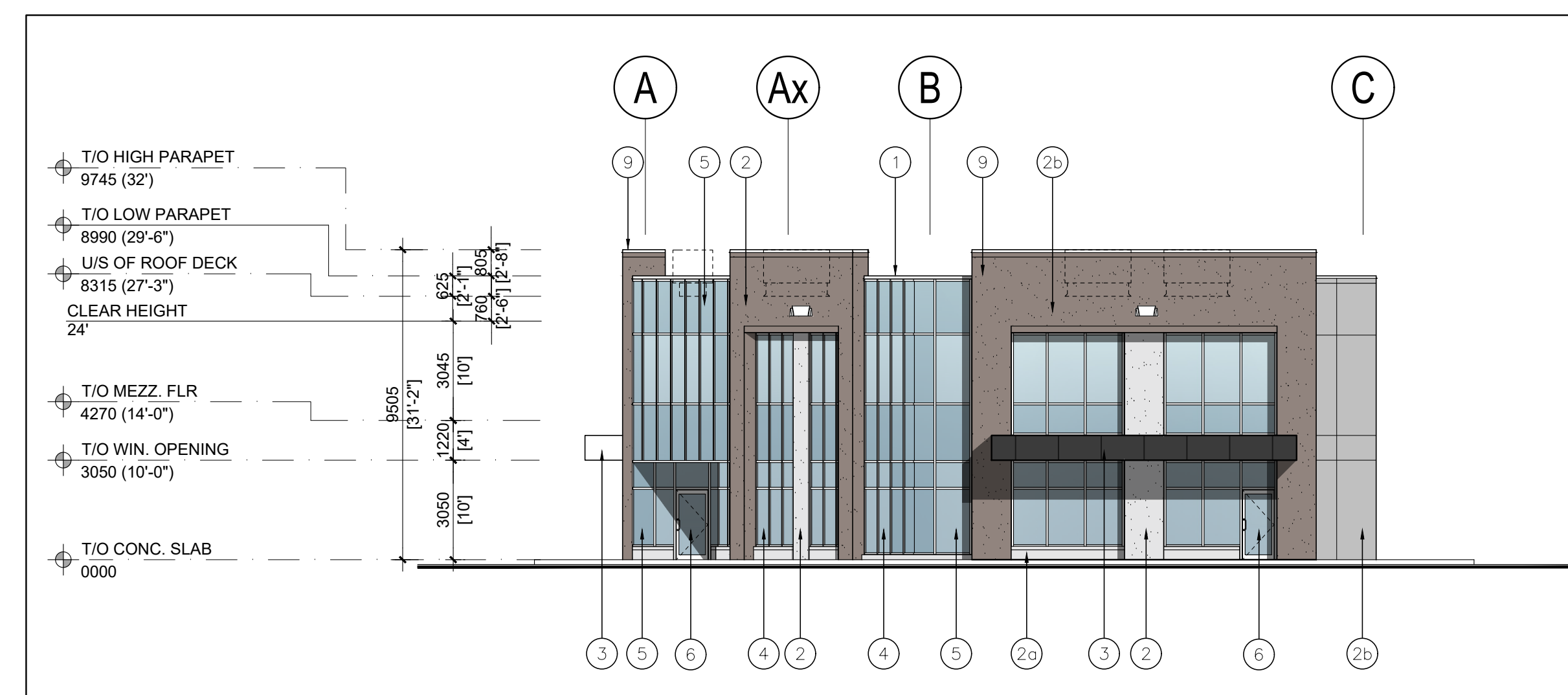
1 PART OF NORTH ELEVATION
A-3.0C 1:150



2 PART OF NORTH ELEVATION
A-3.0C 1:150



3 EAST ELEVATION
A-3.0C 1:150



1 WEST ELEVATION
A-3.0C 1:150

EXTERIOR MATERIAL LEGEND

1 ARCH. PRECAST WALL PANEL W/ SMOOTH RECESSED BANDS & GROOVES PER ELEVATIONS & SECTIONS. COLOUR: TBD	6 CLEAR TEMPERED THERMAL GLASS AND ALUMINUM DOOR(S) COLOUR OF ALUMINUM TO MATCH WINDOW CAPS.
2 INSULATED PRECAST WALL PANEL W/ SMOOTH RECESSED BANDS & GROOVES PER ELEVATIONS & SECTIONS. COLOUR: TBD	7 INSULATED HOLLOW METAL MAN DOOR IN THERMAL PRESSED STEEL FRAME. DOOR AND FRAME PAINTED TO MATCH ADJACENT INSULATED PRECAST.
2a ARCH. PRECAST WALL PANEL W/ SMOOTH FINISH & SMOOTH RECESSED BANDS & GROOVES AS PER ELEVATIONS & SECTIONS. COLOUR: TBD	8 RESERVED
2b INSULATED PRECAST WALL PANEL W/ SMOOTH FINISH & SMOOTH RECESSED BANDS & GROOVES AS PER ELEVATIONS & SECTIONS. COLOUR: TBD	9 PREFINISHED METAL CAP FLASHING. COLOUR TO MATCH PRECAST BELOW.
3 CANOPY CLAD IN ALUMINUM COMPOSITE PANELS. COLOUR: CHARCOAL	10 PREFINISHED INSULATED HOLLOW METAL OVERHEAD DRIVE-IN DOOR. CW 3 VIEWING WINDOWS. COLOUR TO MATCH ADJACENT PRECAST PANELS. BENT STEEL JAMBS TO BE HOT DIP GALVANIZED. CW 2 200mm DIA. x 1500mm HIGH HOT DIP GALVANIZED PIPE BOLLARDS.
4 THERMAL DOUBLE GLAZING (GREY TINT) IN PREFINISHED ALUMINUM FRAMES. COLOUR OF CAPS: CHARCOAL ANODIZED ALUMINUM	11 ROOF TOP UNIT
5 SPANDREL GLAZING IN PREFINISHED ALUMINUM FRAMES. COLOUR OF SPANDREL GREY. COLOUR OF CAPS: CHARCOAL ANODIZED ALUMINUM	

No.	ISSUED	DATE
1	ISSUED FOR SPA	SEPT. 07, 2023
2	ISSUED FOR SPA	APR. 12, 2024

No.	REVISION	DATE
-----	----------	------

BALDASSARRA
Architects Inc.
30 Great Gulf Drive, Unit 20 | Concord ON | L4K 0K7
T. 905.660.0722 | www.baldassarra.ca
OWNERS INFORMATION:



576 Bronte Road

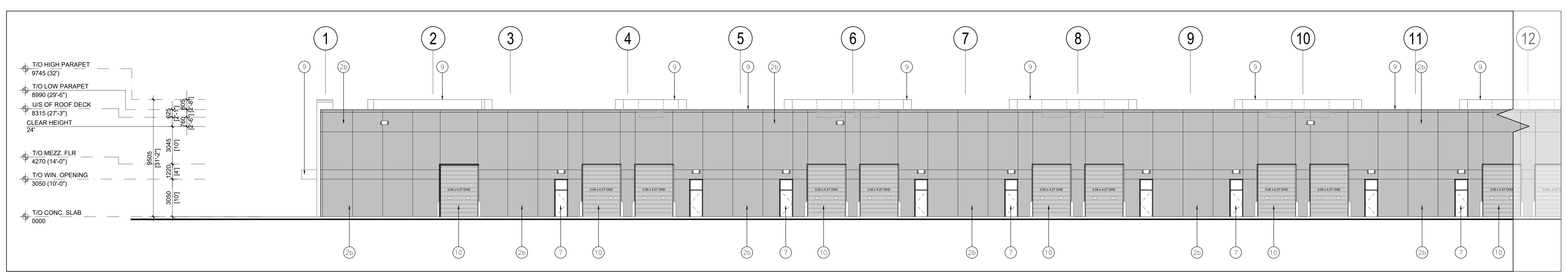
Oakville, ON

NORTH, EAST, WEST ELEVATIONS - BLDG C

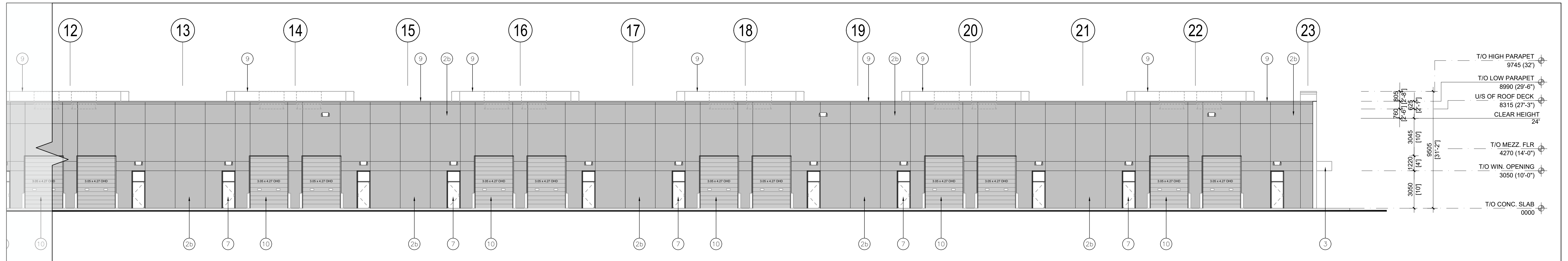
DATE:	DRAWN BY:	CHECKED:	SCALE:
JULY 2023	MP/JZ	JP	1:150
PROJECT No.	DRAWING No.		

23-01

A-3.0C



1 PART OF SOUTH ELEVATION
A-3.1C
1:150



2 PART OF SOUTH ELEVATION
A-3.1C
1:150

EXTERIOR MATERIAL LEGEND

- 1 ARCH. PRECAST WALL PANEL W/ SMOOTH RECESSED BANDS & GROOVES PER ELEVATIONS & SECTIONS. COLOUR: TBD
- 2 INSULATED PRECAST WALL PANEL W/ SMOOTH RECESSED BANDS & GROOVES PER ELEVATIONS & SECTIONS. COLOUR: TBD
- 2b ARCH. PRECAST WALL PANEL W/ SMOOTH FINISH & SMOOTH RECESSED BANDS & GROOVES AS PER ELEVATIONS & SECTIONS. COLOUR: TBD
- 3 CANOPY CLAD IN ALUMINUM COMPOSITE PANELS. COLOUR: CHARCOAL
- 4 THERMAL DOUBLE GLAZING (GREY TINT) IN PREFINISHED ALUMINUM FRAMES. COLOUR OF CAPS: CHARCOAL ANODIZED ALUMINUM
- 5 SPANDREL GLAZING IN PREFINISHED ALUMINUM FRAMES. COLOUR OF SPANDREL: GREY. COLOUR OF CAPS: CHARCOAL ANODIZED ALUMINUM
- 6 CLEAR TEMPERED THERMAL GLASS AND ALUMINUM DOOR(S). COLOUR OF ALUMINUM TO MATCH WINDOW CAPS.
- 7 INSULATED HOLLOW METAL MAN DOOR IN THERMAL PRESSED STEEL FRAME. DOOR AND FRAME PAINTED TO MATCH ADJACENT INSULATED PRECAST.
- 8 RESERVED
- 9 PREFINISHED METAL CAP FLASHING. COLOUR TO MATCH PRECAST BELOW.
- 10 PREFINISHED INSULATED HOLLOW METAL OVERHEAD DRIVE-IN DOOR. CW 3 VIEWING WINDOWS. COLOUR TO MATCH ADJACENT PRECAST PANELS. BENT STEEL JAMBS TO BE HOT DIP GALVANIZED. CW 2 200mm DIA. x 1500mm HIGH HOT DIP GALVANIZED PIPE BOLLARDS.
- 11 ROOF TOP UNIT

No.	ISSUED	DATE
1	ISSUED FOR SPA	SEPT. 07, 2023
2	ISSUED FOR SPA	APR. 12, 2024

No.	REVISION	DATE

BALDASSARRA
Architects Inc.

30 Great Gulf Drive, Unit 20 | Concord ON | L4K 0K7
T. 905.660.0722 | www.baldassarra.ca
OWNERS INFORMATION:



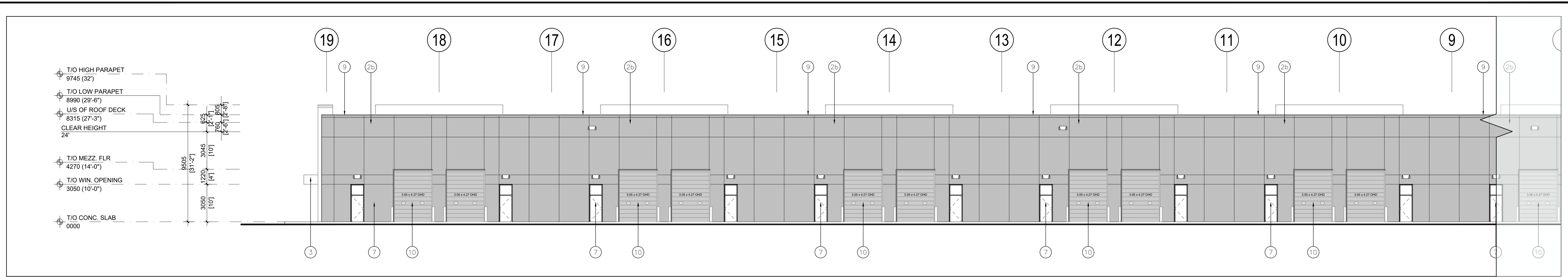
576 Bronte Road

Oakville, ON

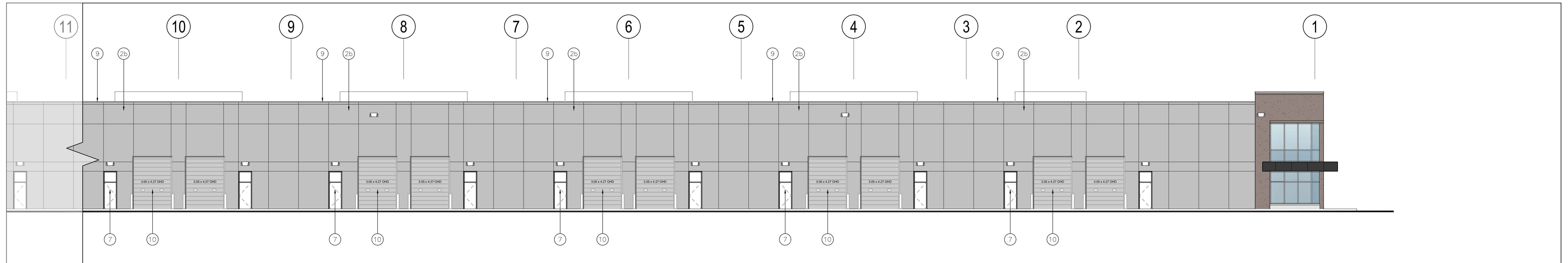
SOUTH ELEVATIONS - BLDG C

DATE:	DRAWN BY:	CHECKED:	SCALE:
JULY 2023	MP/JZ	JP	1:150

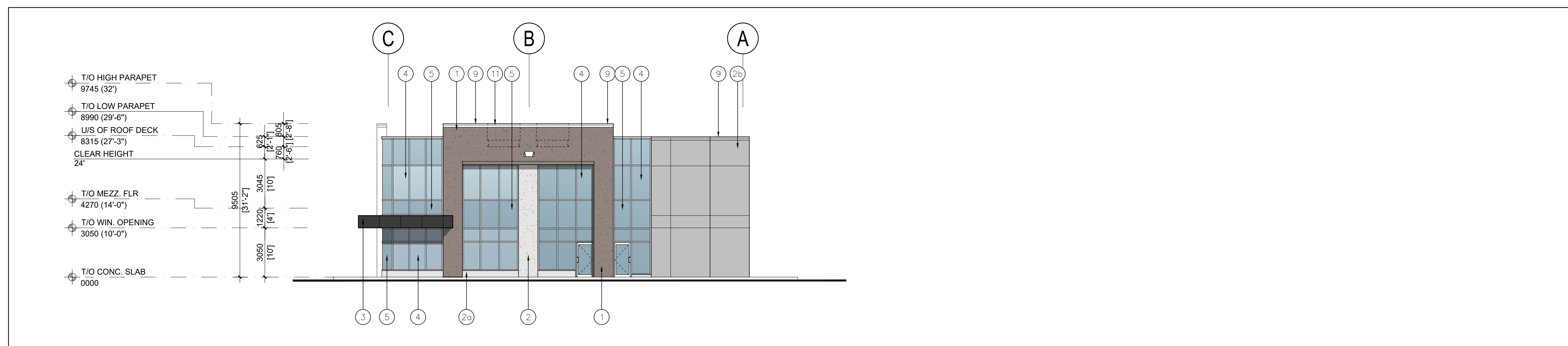
PROJECT No. 23-01
DRAWING No. **A-3.1C**



1 PART OF NORTH ELEVATION
A-3.0D 1:150



2 PART OF NORTH ELEVATION
A-3.0D 1:150



3 EAST ELEVATION
A-3.0D 1:150

EXTERIOR MATERIAL LEGEND

- 1 ARCH. PRECAST WALL PANEL W/ SMOOTH RECESSED BANDS & GROOVES PER ELEVATIONS & SECTIONS. COLOUR: TBD
- 2 INSULATED PRECAST WALL PANEL W/ SMOOTH RECESSED BANDS & GROOVES PER ELEVATIONS & SECTIONS. COLOUR: TBD
- 2a ARCH. PRECAST WALL PANEL W/ SMOOTH FINISH & SMOOTH RECESSED BANDS & GROOVES AS PER ELEVATIONS & SECTIONS. COLOUR: TBD
- 2b INSULATED PRECAST WALL PANEL W/ SMOOTH FINISH & SMOOTH RECESSED BANDS & GROOVES AS PER ELEVATIONS & SECTIONS. COLOUR: CHARCOAL
- 3 CANOPY CLAD IN ALUMINUM COMPOSITE PANELS. COLOUR: CHARCOAL
- 4 THERMAL DOUBLE GLAZING (GREY TINT) IN PREFINISHED ALUMINUM FRAMES. COLOUR OF CAPS: CHARCOAL ANODIZED ALUMINUM
- 5 SPANDREL GLAZING IN PREFINISHED ALUMINUM FRAMES. COLOUR OF SPANDREL: GREY. COLOUR OF CAPS: CHARCOAL ANODIZED ALUMINUM
- 6 CLEAR TEMPERED THERMAL GLASS AND ALUMINUM DOOR(S). COLOUR OF ALUMINUM TO MATCH WINDOW CAPS.
- 7 INSULATED HOLLOW METAL MAN DOOR IN THERMAL PRESSED STEEL FRAME. DOOR AND FRAME PAINTED TO MATCH ADJACENT INSULATED PRECAST.
- 8 RESERVED
- 9 PREFINISHED METAL CAP FLASHING. COLOUR TO MATCH PRECAST BELOW.
- 10 PREFINISHED INSULATED HOLLOW METAL OVERHEAD DRIVE-IN DOOR. C/W 3 VIEWING WINDOWS. COLOUR TO MATCH ADJACENT PRECAST PANELS. BENT STEEL JAMBS TO BE HOT DIP GALVANIZED. C/W 2 200mm DIA. x 1500mm HIGH HOT DIP GALVANIZED PIPE BOLLARDS.
- 11 ROOF TOP UNIT

No.	ISSUED	DATE
1	ISSUED FOR SPA	SEPT. 07, 2023
2	ISSUED FOR SPA	APR. 12, 2024

No.	REVISION	DATE
-----	----------	------

BALDASSARRA
Architects Inc.
30 Great Gulf Drive, Unit 20 | Concord ON | L4K 0K7
T. 905.660.0722 | www.baldassarra.ca
OWNERS INFORMATION:



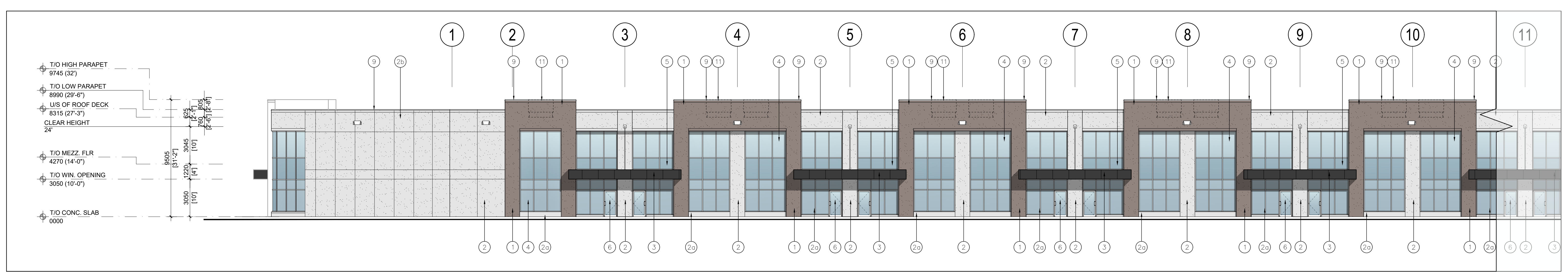
576 Bronte Road

Oakville, ON

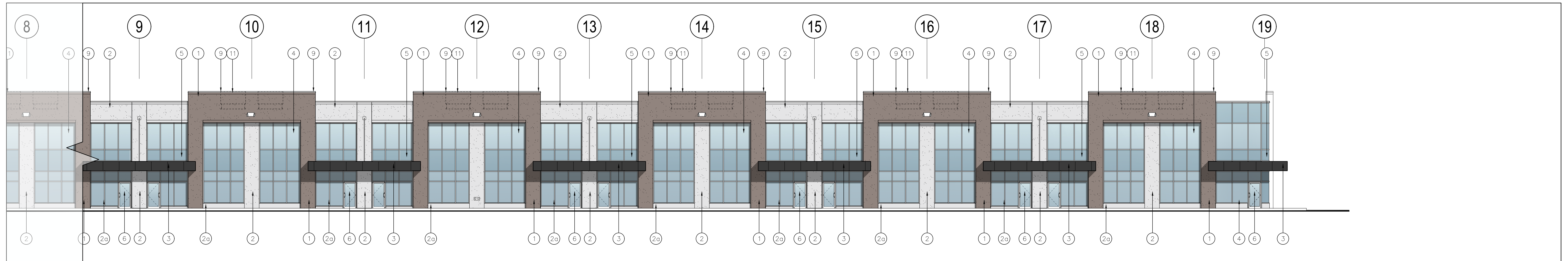
NORTH, EAST ELEVATIONS - BLDG D

DATE:	DRAWN BY:	CHECKED:	SCALE:
JULY 2023	MP/JZ	JP	1:300

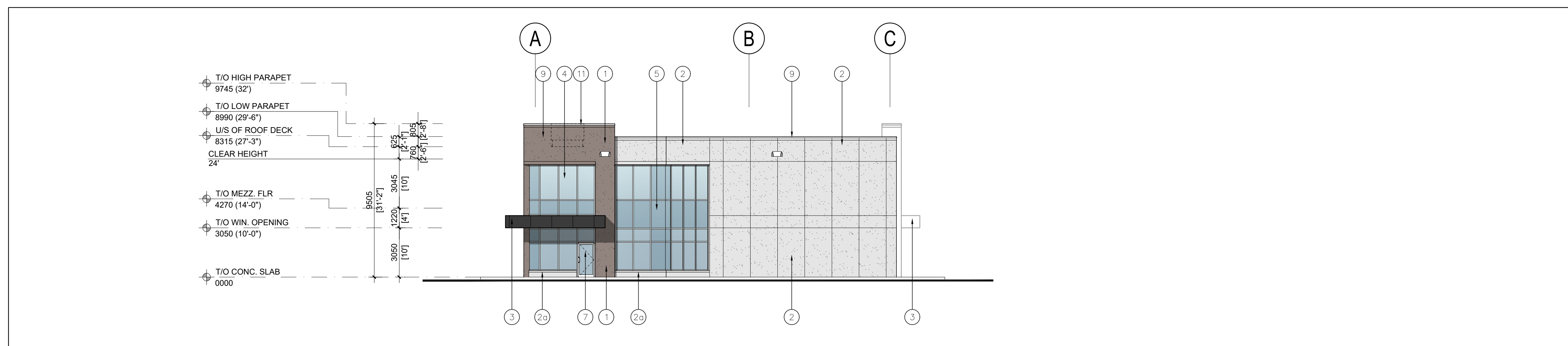
PROJECT No. 23-01 DRAWING No. **A-3.0D**



1 PART OF SOUTH ELEVATION
A-3.1D
1:150



1 PART OF SOUTH ELEVATION
A-3.2D
1:150



1 WEST ELEVATION
A-3.3D
1:150

EXTERIOR MATERIAL LEGEND

1 ARCH. PRECAST WALL PANEL W/ SMOOTH RECESSED BANDS & GROOVES PER ELEVATIONS & SECTIONS. COLOUR: TBD	6 CLEAR TEMPERED THERMAL GLASS AND ALUMINUM DOOR(S). COLOUR OF ALUMINUM TO MATCH WINDOW CAPS.
2 INSULATED PRECAST WALL PANEL W/ SMOOTH RECESSED BANDS & GROOVES PER ELEVATIONS & SECTIONS. COLOUR: TBD	7 INSULATED HOLLOW METAL MAN DOOR IN THERMAL PRESSED STEEL FRAME. DOOR AND FRAME PAINTED TO MATCH ADJACENT INSULATED PRECAST.
2a ARCH. PRECAST WALL PANEL W/ SMOOTH FINISH & SMOOTH RECESSED BANDS & GROOVES AS PER ELEVATIONS & SECTIONS. COLOUR: TBD	8 RESERVED
2b INSULATED PRECAST WALL PANEL W/ SMOOTH FINISH & SMOOTH RECESSED BANDS & GROOVES AS PER ELEVATIONS & SECTIONS. COLOUR: TBD	9 PREFINISHED METAL CAP FLASHING. COLOUR TO MATCH PRECAST BELOW.
3 CANOPY CLAD IN ALUMINUM COMPOSITE PANELS. COLOUR: CHARCOAL	10 PREFINISHED INSULATED HOLLOW METAL OVERHEAD DRIVE-IN DOOR. C/W 3 VIEWING WINDOWS. COLOUR TO MATCH ADJACENT PRECAST PANELS. BENT STEEL JAMBS TO BE HOT DIP GALVANIZED. C/W 2 200mm DIA. x 1500mm HIGH HOT DIP GALVANIZED PIPE BOLLARDS.
4 THERMAL DOUBLE GLAZING (GREY TINT) IN PREFINISHED ALUMINUM FRAMES. COLOUR OF CAPS: CHARCOAL ANODIZED ALUMINUM	11 ROOF TOP UNIT
5 SPANDREL GLAZING IN PREFINISHED ALUMINUM FRAMES. COLOUR OF SPANDREL: GREY. COLOUR OF CAPS: CHARCOAL ANODIZED ALUMINUM	

No.	ISSUED	DATE
1	ISSUED FOR SPA	SEPT. 07, 2023
2	ISSUED FOR SPA	APR. 12, 2024

No.	REVISION	DATE

BALDASSARRA
Architects Inc.
30 Great Gulf Drive, Unit 20 | Concord ON | L4K 0K7
T. 905.660.0722 | www.baldassarra.ca
OWNERS INFORMATION:



576 Bronte Road

Oakville, ON

SOUTH, WEST ELEVATIONS - BLDG D

DATE: JULY 2023	DRAWN BY: MP/JZ	CHECKED: JP	SCALE: 1:300
PROJECT No.		DRAWING No.	

23-01 **A-3.1D**