

LANDSCAPE SPECIFICATIONS:

ALL SOD SHALL CONFORM TO THE STANDARDS OF THE NURSERY SOD GROWERS ASSOCIATION OF ONTARIO. ALL SODDED AREAS SHALL BE PREPARED WITH A MINIMUM OF 100MM OF TOPSOIL AND SODDED WITH #1 BLUEGRASS – FESCUE NURSERY SOD. ON SLOPES, LAY THE TURF PIECES HORIZONTALLY ACROSS THE SLOPE, STARTING AT THE BOTTOM. FOR AREAS WITH A 2:1 SLOPE OR GREATER STAKE SOD TO HOLD IN PLACE WITH 1/2" X 1" X 12" PEGS AT TWO-FOOT SPACINGS.

UNLESS SOIL TESTS SUGGEST OTHERWISE, FERTILIZER SHALL BE APPLIED AS FOLLOWS:

SODDED AREAS: 11-8-4 (11% NITROGEN, 8% PHOSPHOROUS, 4% POTASH) AT 4.5 KG/M2.

PLANTING BEDS: 7-7-7 (7% NITROGEN, 7% PHOSPHOROUS, 7% POTASH) AT 0.12 KG/M3, AND BONE MEAL AT 0.58 KG/M3 OF PLANTING SOIL MIXTURE AS OUTLINED BELOW.

ALL PLANTING BEDS ARE TO BE CONTINUOUS, AND EXCAVATED TO A MINIMUM DEPTH OF 450MM UNLESS NOTED OTHERWISE. PLANTING BEDS ARE TO BE FILLED WITH A SOIL MIXTURE COMPOSED OF 50-60% SAND, 20-40% SILT, 6-10% CLAY, AND 2-5% ORGANIC IN ADDITION TO THE FERTILIZERS SPECIFIED ABOVE, WITH A PH OF 7.5 OR LESS. NATIVE ON-SITE SOILS MAY BE UTILIZED BUT MUST BE TESTED FROM A RECOGNIZED LABORATORY TO DETERMINE IF ANY AMENDMENTS ARE REQUIRED.

ALL PLANT MATERIAL SHALL CONFORM TO THE STANDARDS OF THE CANADIAN NURSERY AND LANDSCAPE ASSOCIATION. ALL PLANT MATERIAL IS TO BE CLAY GROWN STOCK. INSTALL ALL PLANT MATERIAL AS SHOWN ON THE PLANTING PLAN AND DETAILS. USE ONLY VIABLE NURSERY STOCK GROWN IN STRICT ACCORDANCE WITH PROPER HORTICULTURAL PRACTICES WHICH IS FREE FROM DAMAGE, PESTS, AND DISEASE.

ALL BEDS ARE TO BE COVERED WITH A 75MM DEPTH OF CLEAN, SHREDDED PINE BARK MULCH BY GRO-BARK OR APPROVED EQUAL UNLESS NOTED OTHERWISE. TRANSPORTATION, HANDLING, STORAGE AND PLANTING ARE TO COMPLY WITH THE GUIDELINES SET OUT BY THE LANDSCAPE ONTARIO HORTICULTURAL TRADES ASSOCIATION. GUYING AND STAKING OF TREES SHALL CONFORM TO THE PLANTING DETAILS.

THE CONTRACTOR WILL OBSERVE PROPER MAINTENANCE PROCEDURES FOR ALL NEWLY CONSTRUCTED LANDSCAPE WORK AS PER CHAPTER 16 (LANDSCAPE MAINTENANCE) OF LANDSCAPE ONTARIO HORTICULTURAL TRADES ASSOCIATION GUIDELINES. UNLESS OTHERWISE NOTED, THIS WILL APPLY DURING THE CONSTRUCTION PERIOD ONLY. THE CONTRACTOR SHALL MAINTAIN ALL PLANTING AND SODDING UNTIL FINAL ACCEPTANCE IS GRANTED BY THE LANDSCAPE ARCHITECT.

THE CONTRACTOR WILL BE RESPONSIBLE FOR THE PROTECTION OF ALL PLANT MATERIAL FROM DAMAGES RESULTING FROM WINTER CONDITIONS AS WELL AS RODENTS DURING THE WARRANTY PERIOD. APPLY "SKOOT" RODENT DETERRENT FORMULA (OR APPROVED EQUAL) TO ALL CONIFEROUS TREES AND ALL SHRUBS IN LATE OCTOBER AS PER MANUFACTURER'S DIRECTIONS.

THE CONTRACTOR SHALL PROVIDE A FULL ONE YEAR GUARANTEE (OR TWO YEARS IF REQUIRED BY THE MUNICIPALITY OR OWNER) ON ALL LANDSCAPE WORKS, BEGINNING ON THE DATE THAT FINAL ACCEPTANCE IS GRANTED BY THE LANDSCAPE ARCHITECT.

1 LANDSCAPE SPECIFICATIONS

L-2

N.T.S.

SEEDING SPECIFICATIONS

HYDRAULIC MULCH TO BE APPROVED BY THE LANDSCAPE ARCHITECT AND SHALL BE APPLIED AT THE RATE OF 2100kg PER HECTARE (OR AS PER SUPPLIER'S SPECIFICATIONS).

THE CONTRACTOR SHALL NOT CARRY OUT THE WORK UNDER ADVERSE WEATHER CONDITIONS SUCH AS HIGH WIND, FROZEN GROUND OR GROUND COVERED WITH SNOW, ICE OR STANDING WATER.

A SOIL TEST SHOULD BE PERFORMED BY A COMPETENT TERRASEEDING CONTRACTOR TO VERIFY MIXTURE AND PERCENTAGES REQUIRED.

PREPARATION: GRADE SUB-GRADE, ELIMINATE UNEVEN AREAS AND LOW SPOTS, ENSURE POSITIVE DRAINAGE. REMOVE DEBRIS, ROOTS, BRANCHES, STONES IN EXCESS OF 50MM DIAMETER AND OTHER DELETERIOUS MATERIALS. REMOVE SUBSOIL THAT HAS BEEN CONTAMINATED WITH OIL, GASOLINE OR CALCIUM CHLORIDE. DISPOSE OF REMOVED MATERIAL AS DIRECTED BY LANDSCAPE ARCHITECT.

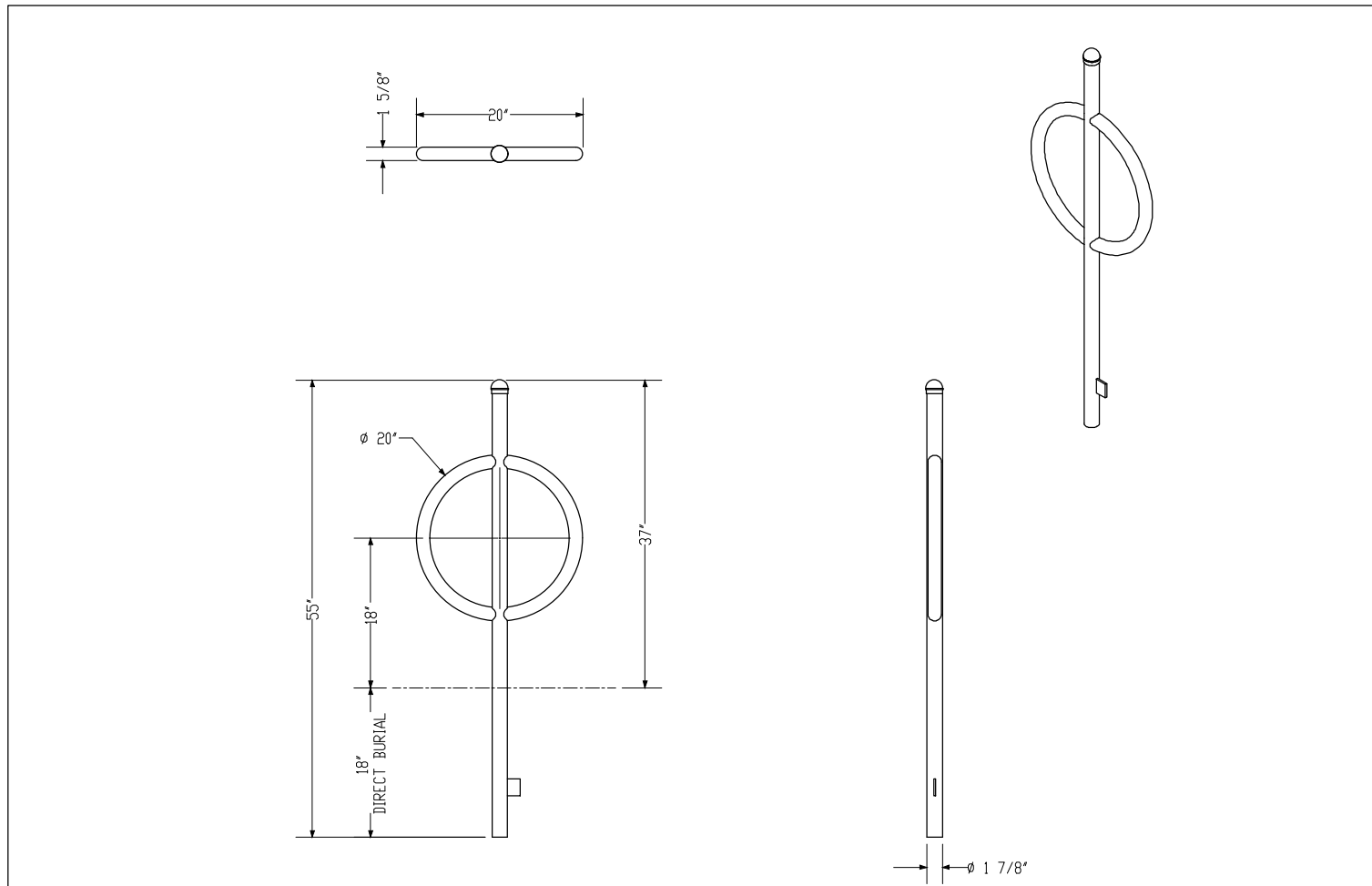
GRADE SUB-GRADE FOR SEEDING TO A UNIFORM SURFACE AND REMOVE VEGETATION WHICH MAY INTERFERE WITH SEEDING OPERATIONS. LOOSEN SOIL TO DEPTH OF 25MM MINIMUM AND REMOVE STONES AND FOREIGN MATERIAL WHICH PROTRUDE MORE THAN 75MM ABOVE THE SURFACE.

CONTRACTOR TO SUPPLY AND INSTALL 200mm – 300mm LAYER OF TOPSOIL OVER THE AREA TO BE SEEDD PRIOR TO SEEDING. WHERE SLOPES EXCEED 3:1, AN EROSION CONTROL BLANKET SHALL BE APPLIED. SEEDING SHALL OCCUR IMMEDIATELY FOLLOWING OR WITHIN ONE (1) WEEK OF INSTALLATION OF TOPSOIL TO ENSURE THAT THE WEED BANK IN THE SOIL DOES NOT GERMINATE AND ESTABLISH.

5 Stormwater Pond Seed Mixture

L-2

n.t.s.

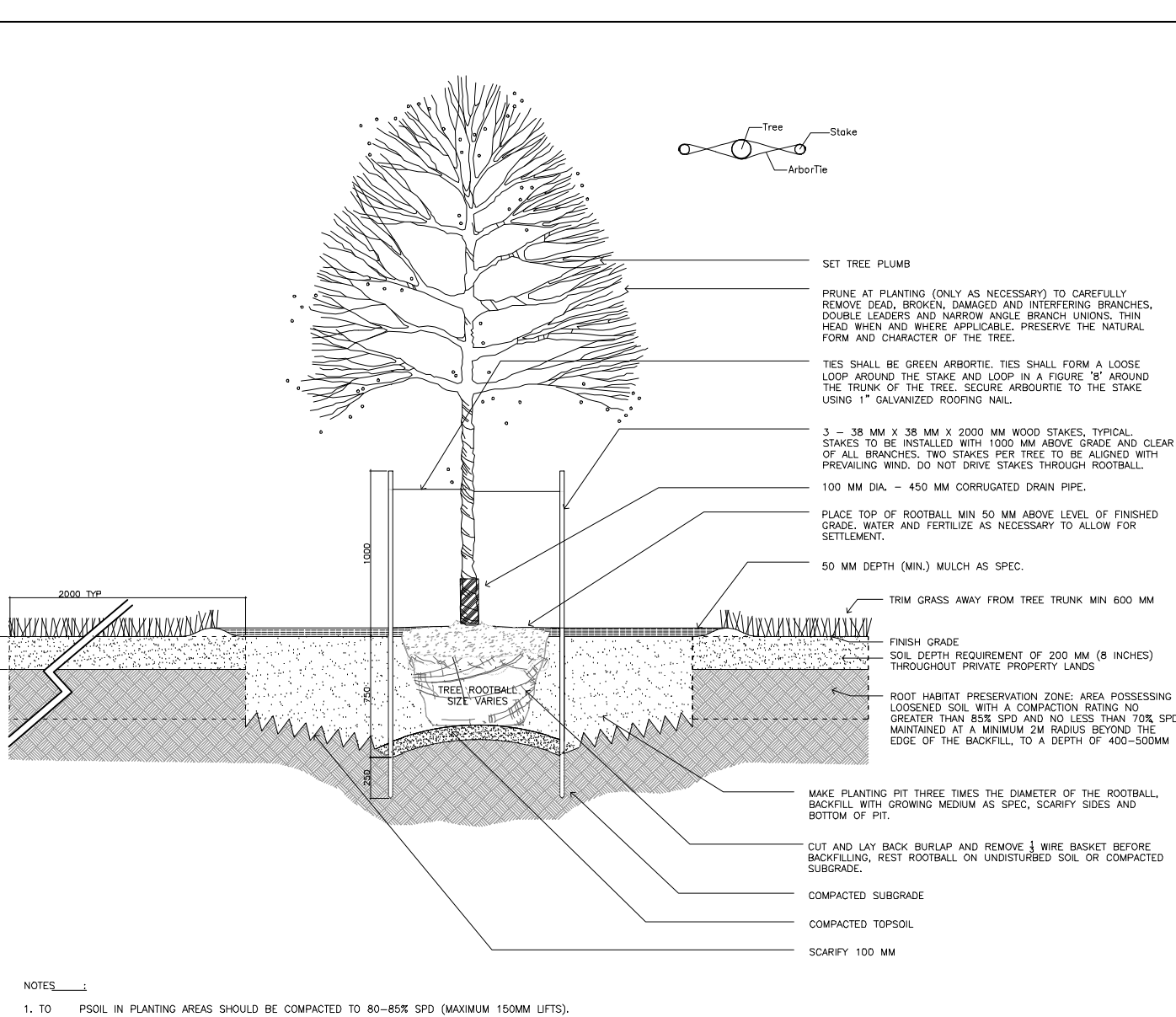


MAGLIN MBR-100 BIKERACK

9

L-2

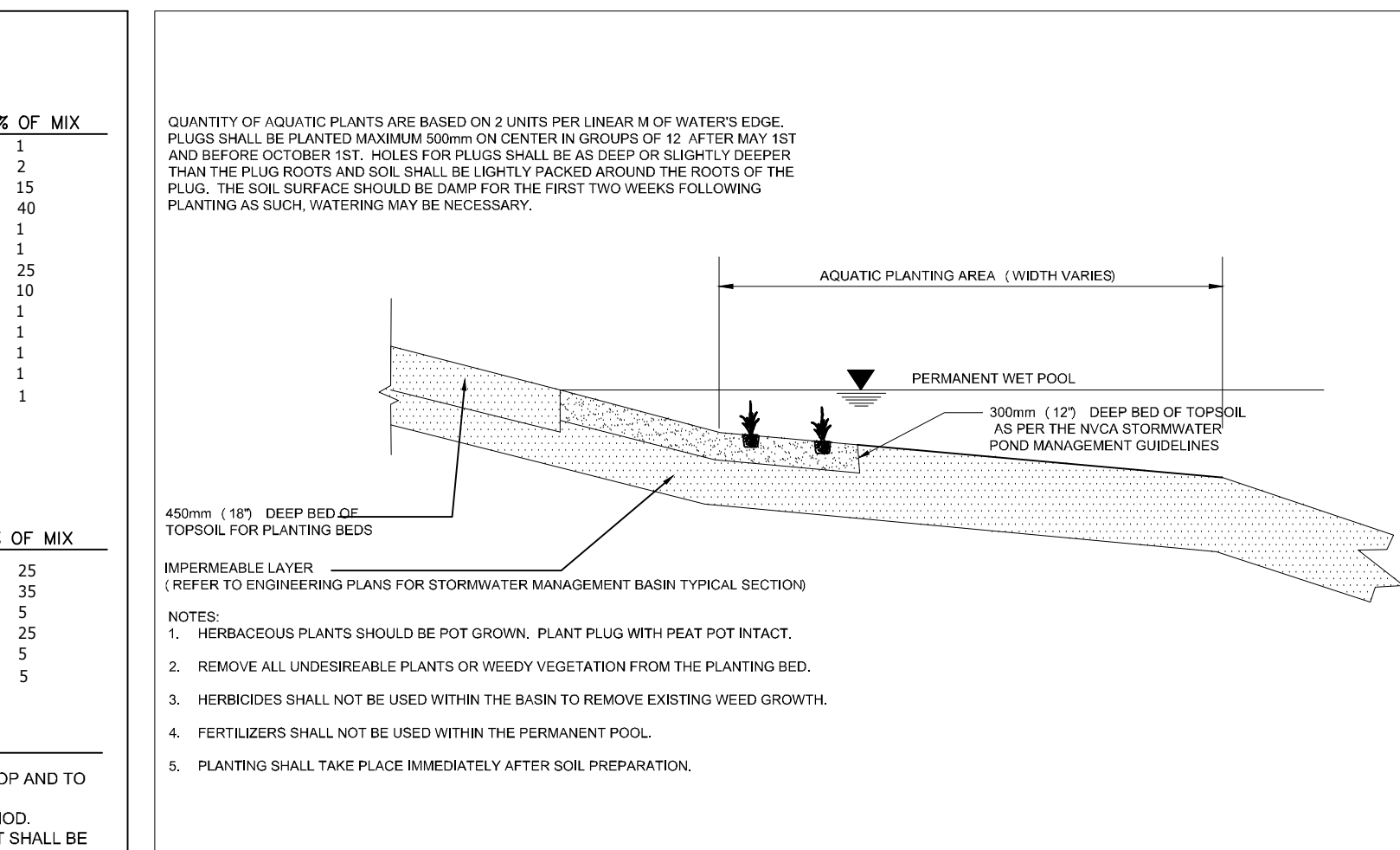
n.t.s.



2 DECIDUOUS TREE PLANTING DETAIL

L-2

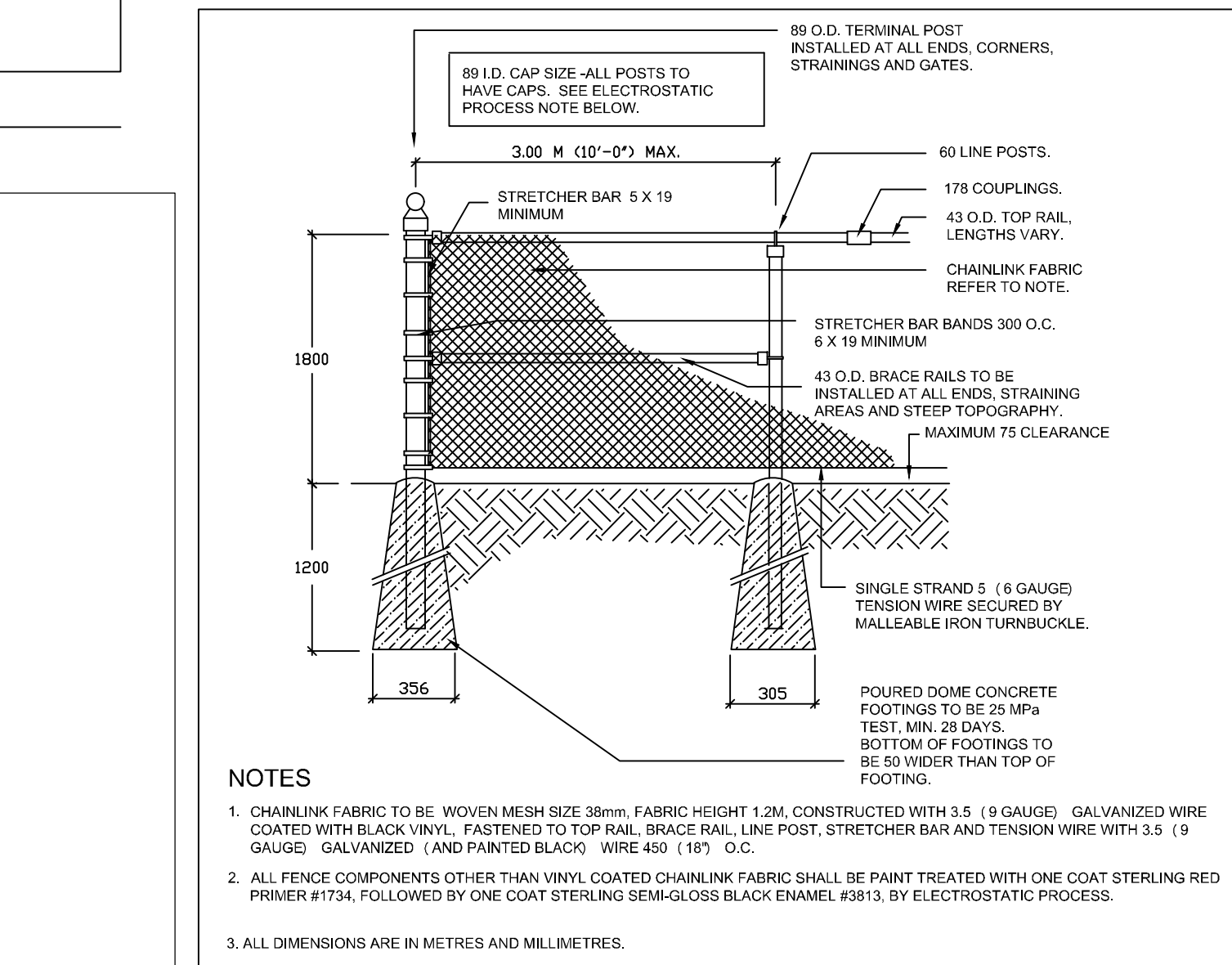
N.T.S.



6 Aquatic Planting Detail

L-2

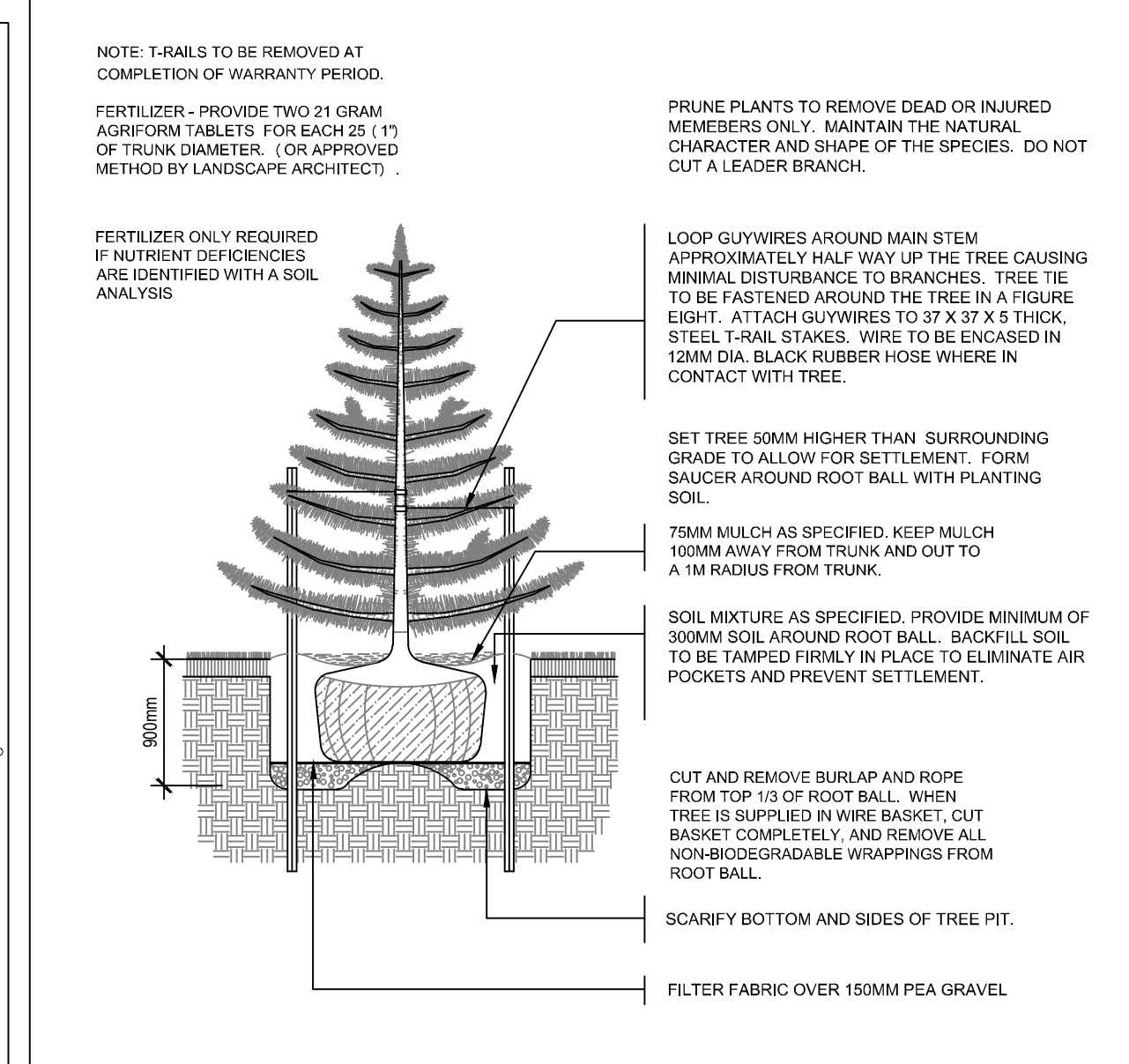
n.t.s.



10 1.8 m Chain Link Fence

L-2

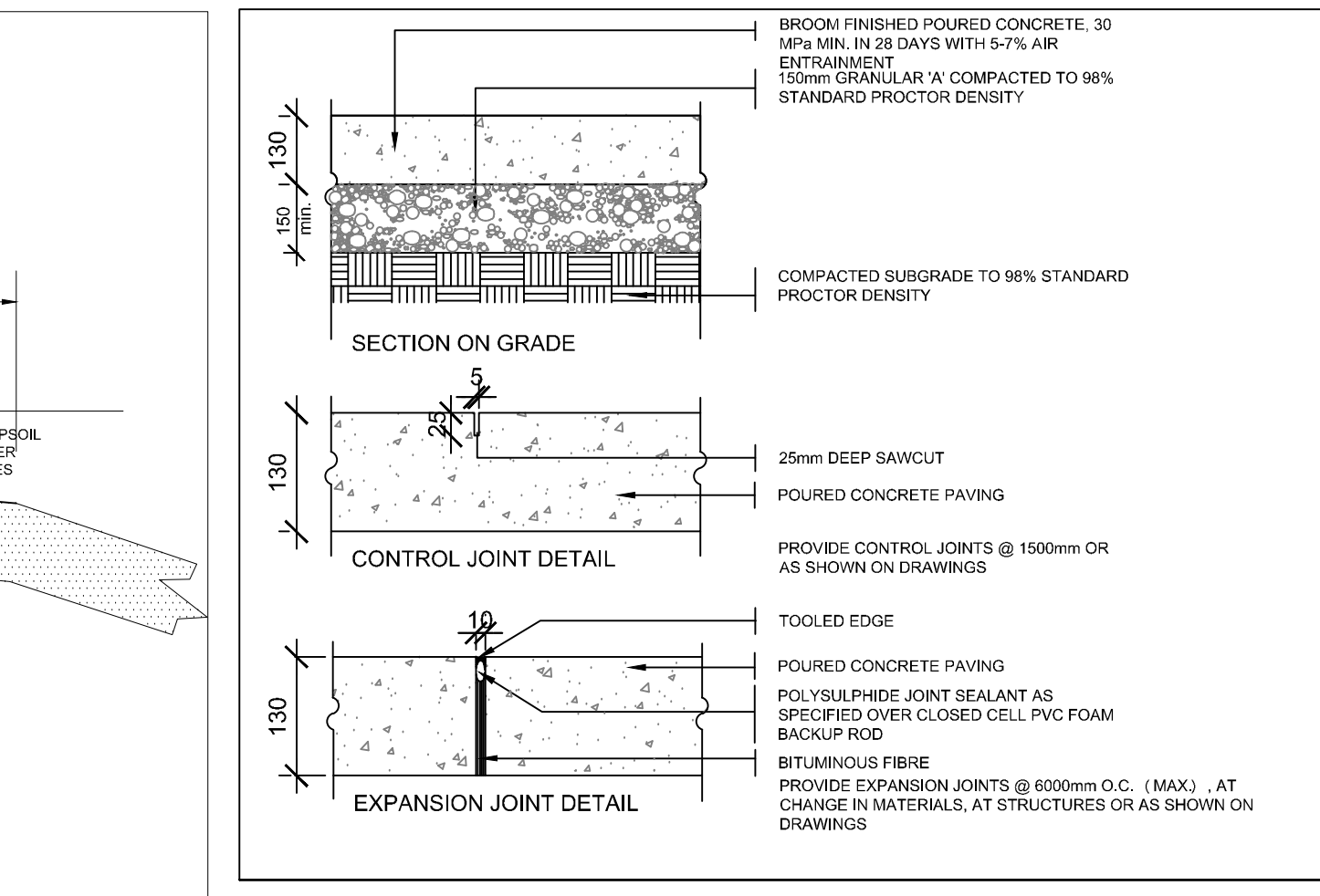
n.t.s.



3 CONIFEROUS TREE PLANTING DETAIL

L-2

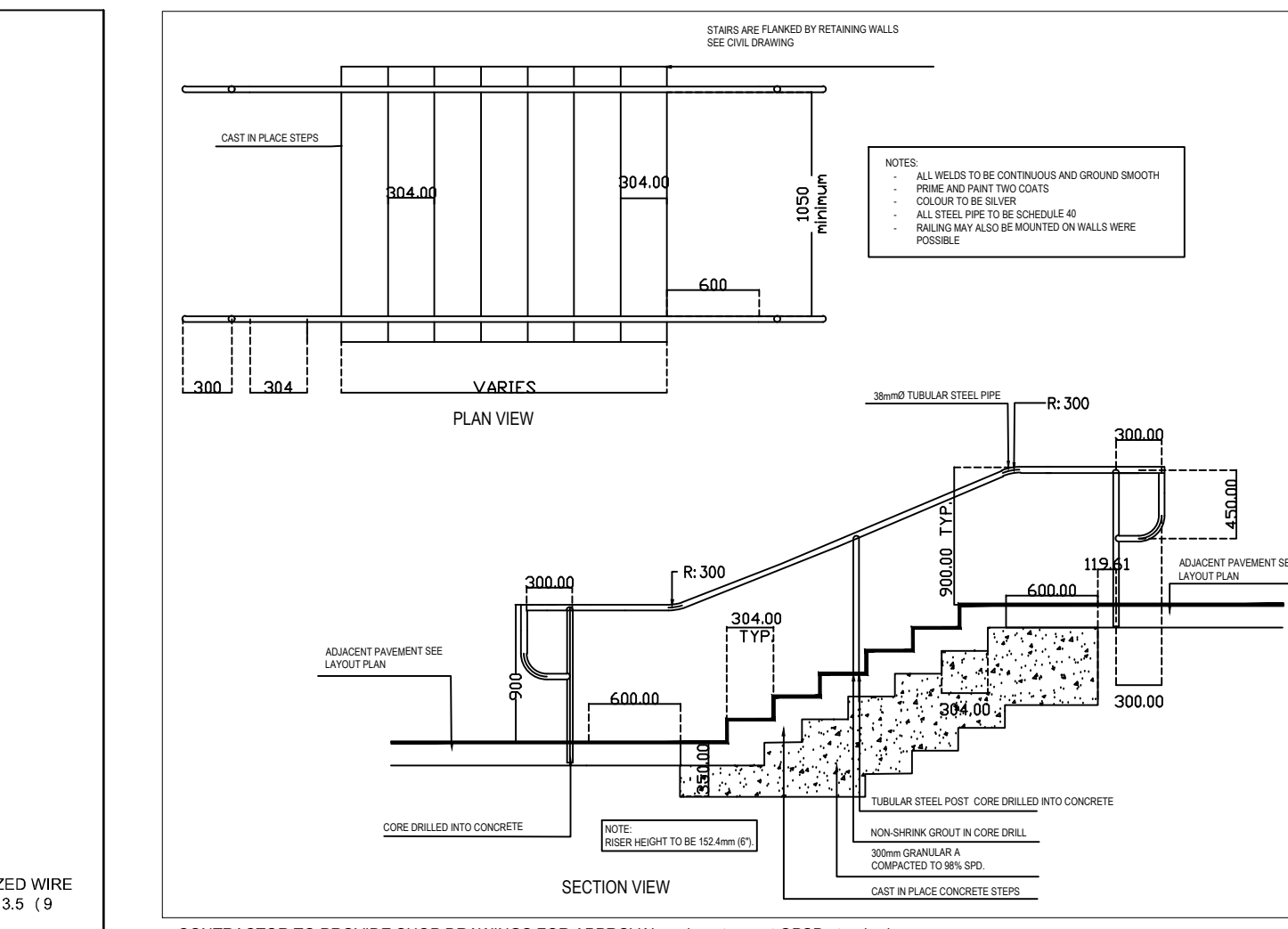
N.T.S.



7 CONCRETE PAVING DETAILS (TYPICAL)

L-2

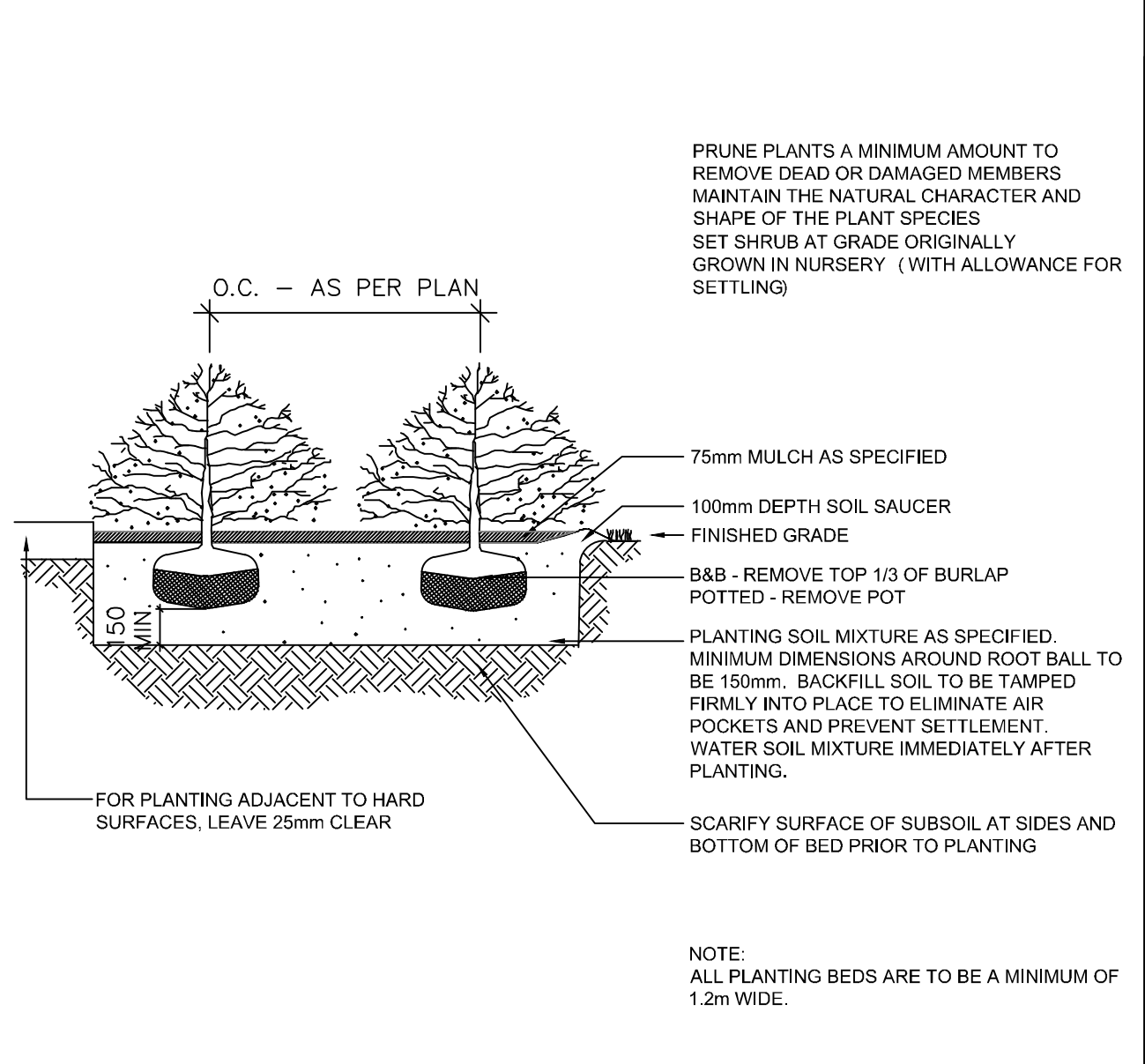
N.T.S.



11 CAST IN PLACE STEPS WITH HAND RAIL

L-2

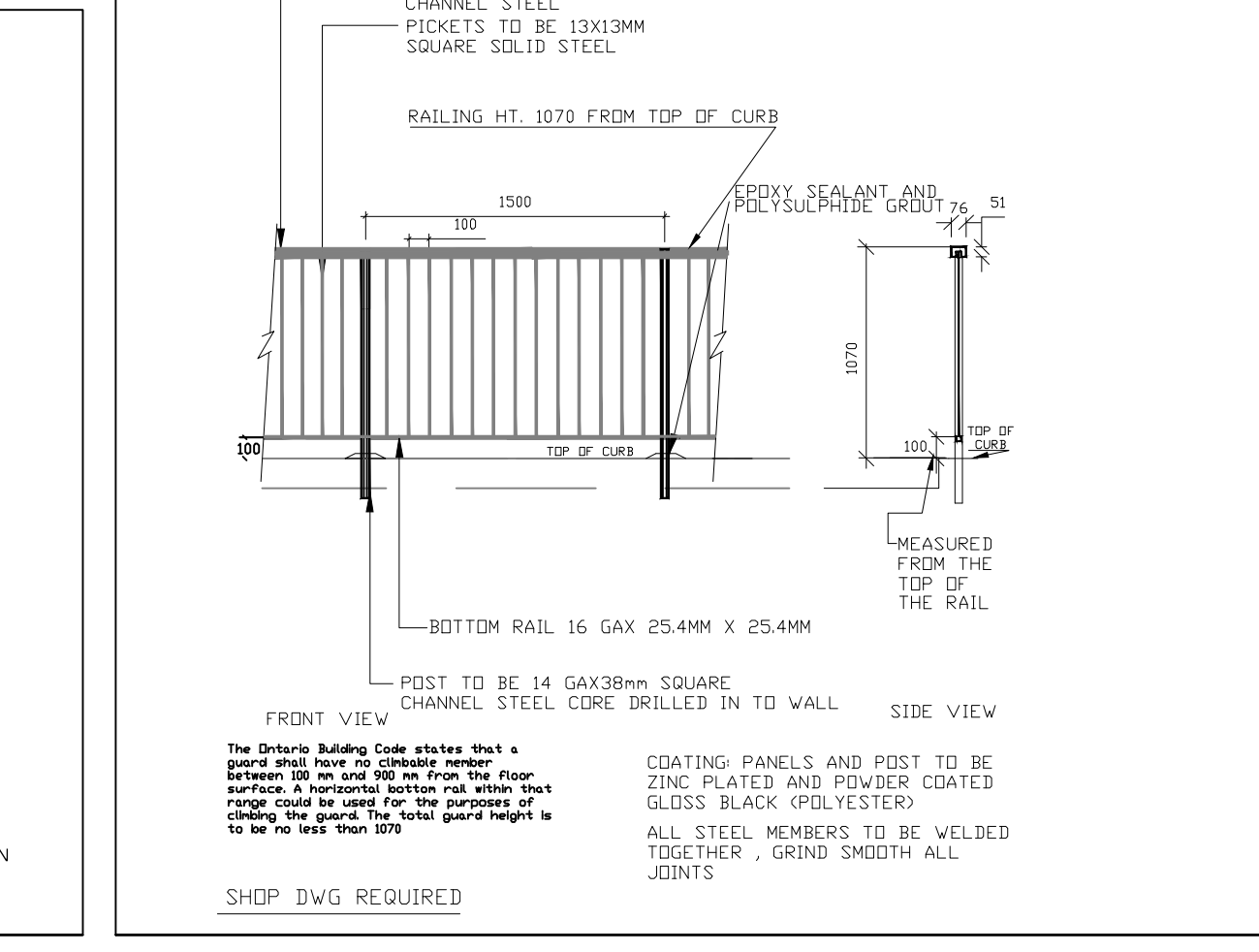
TYPICAL DETAIL N.T.S.



4 Shrub Planting Detail

L-2

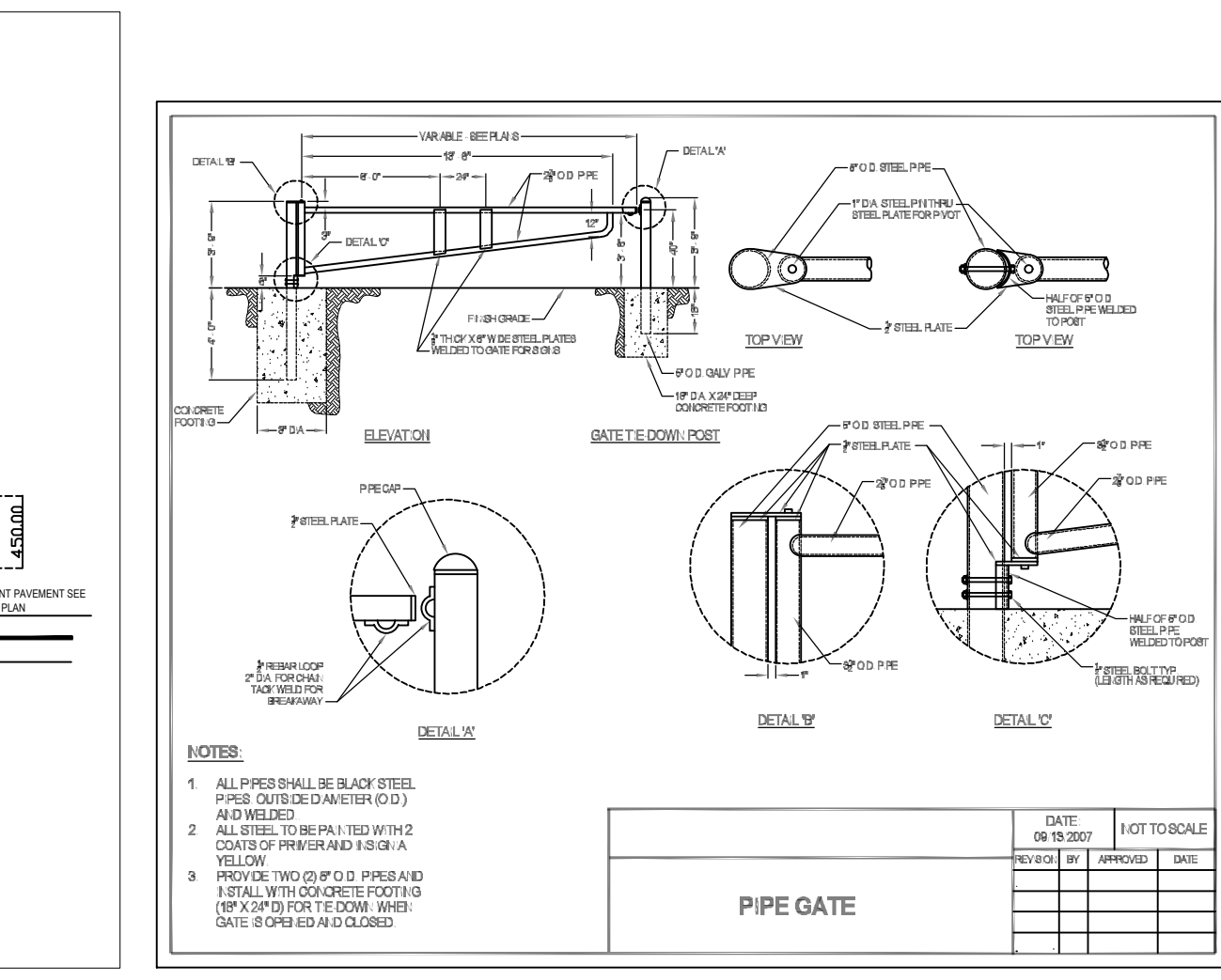
n.t.s.



8 1070mm DECORATIVE METAL RAILING

L-2

N.T.S.



12 PIPE GATE (or approved equivalent)

L-2

n.t.s.

GENERAL NOTES

- Do not scale the drawings. All dimensions are in millimetres unless noted otherwise.
- This drawing is to be read in conjunction with the overall master plan and engineering drawings prepared by the project engineer, and site plans prepared by the project architect.
- The contractor shall check and verify all existing and proposed grading and conditions on the project and immediately report any discrepancies to the consultant before proceeding with any work.
- The contractor is to be aware of all existing and proposed services and utilities. The contractor is responsible for having all underground services and utility lines staked by each agency having jurisdiction prior to commencing work.
- This drawing is to be used for development approval only. For layout of all work refer to construction drawings.
- Plant quantities indicated on the plan supercede the quantities from the plant list (report any discrepancies to the landscape architect).
- Do not leave any holes open overnight.
- Keep area outside construction zone clean and useable by others at all times. Contractor shall thoroughly clean areas surrounding the construction zone at the end of each work day.
- Contractor to make good any and all damages outside of the development area that may occur as a result of construction at no extra cost.
- This drawing is Copyright MHBC 2023.

8	September 1, 2023	Issued for SPA	PD
7	June 16, 2022	Issued for SPA	PD
6	November 18, 2021	Issued for SPA	PD
5	September 03, 2021	Issued for Review	CC
4	August 20, 2021	Issued for Review	CC
3	March 01, 2021	Issued for SPA	CC
2	July 12, 2019	Issued for SPA	PD
1	November 29, 2018	Issued for Review	PD
REVISION NO.	DATE	ISSUED / REVISION	BY



STAMP	DATE	NOVEMBER 2018
DRAWN BY	P.D.	
PLAN SCALE		
FILE NO.	Y593BD	
CHECKED BY	G.C.	
OTHER		

PROJECT	
560 Winston Churchill Blvd. TOWN OF OAKVILLE, ON	
FILE NAME	DWG NO. LANDSCAPE DETAILS L2
SOURCE	