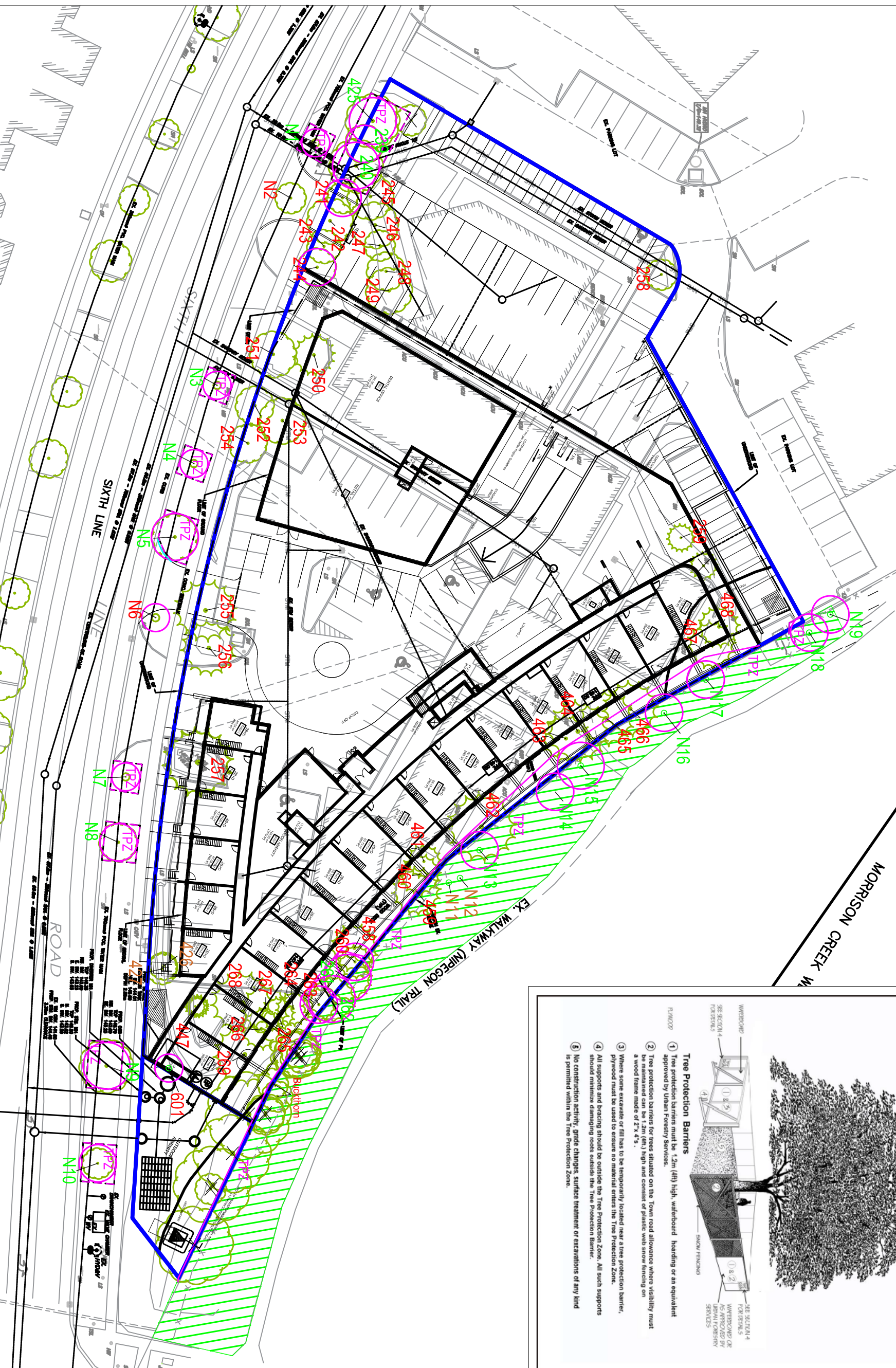
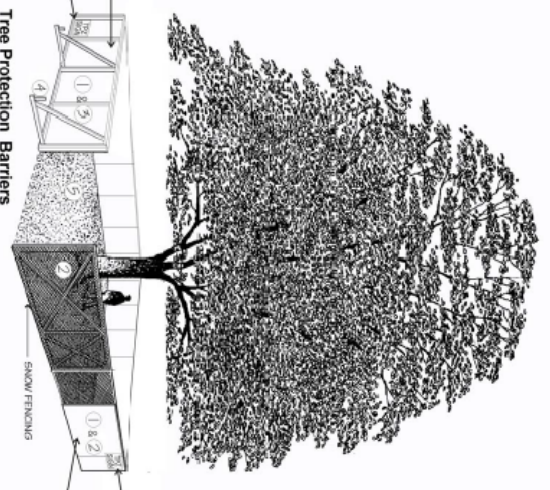




Tree Protection Zone
 No grade change, storage of materials or equipment is permitted within this area.
 This tree protection barrier must not be removed without the written authorization of the Town of Oakville.
 Report any contraventions to:
Contact Name _____ Tel No. _____
 Unauthorized removal of the tree protection barrier or other contraventions may result in prosecution.

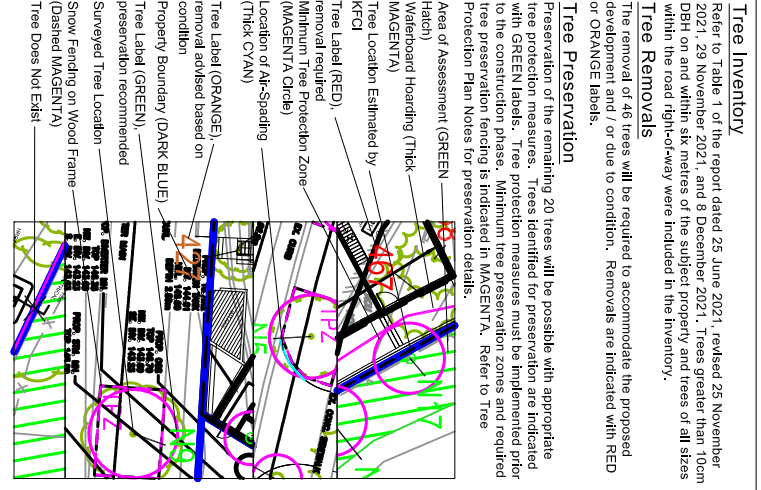


**SCHEDULE 1
 TREE PROTECTION BARRIER**



- 1 Tree protection barriers must be 1.2m (4ft) high, waterboard hoarding or an equivalent approved by Urban Forestry Services.
- 2 Tree protection barriers for trees situated on the Town road allowance where visibility must be maintained can be 1.2m (4ft), high and consist of plastic web snow fencing on a wood frame made of 2"x4"s.
- 3 Where some excavate or fill has to be temporarily located near a tree protection barrier, plywood must be used to ensure no material enters the Tree Protection Zone.
- 4 All supports and bracing should be outside the Tree Protection Zone. All such supports should minimize damaging roots outside the Tree Protection Zone.
- 5 No construction activity, grade changes, surface treatment or excavations of any kind is permitted within the Tree Protection Zone.

LEGEND



TREE REMOVALS
 The removal of 46 trees will be required to accommodate the proposed development and / or due to condition. Removals are indicated with RED or ORANGE labels.

Tree Preservation
 Preservation of the remaining 20 trees will be possible with appropriate tree protection measures. Trees identified for preservation are indicated with GREEN labels. Tree protection measures must be implemented prior to the start of construction. Preservation labels are indicated in MAGENTA. Refer to Tree Protection Plan Notes for preservation details.

Area of Assessment (GREEN)
 (Hatch)

Waterboard Hoarding (Thick MAGENTA)
 Tree Location Estimated by KFCI

Tree Label (RED), removal required (MAGENTA Circle)

Location of 4ft-Spacing (Thick CYAN)

Tree Label (ORANGE) removal advised based on condition

Property Boundary (DARK BLUE)

Tree Label (GREEN), preservation recommended

Surveyed Tree Location

Snow Fencing on Wood Frame (Dashed MAGENTA)

Tree Does Not Exist

Tree Protection Barriers

- 1 Tree protection barriers must be 1.2m (4ft) high, waterboard hoarding or an equivalent approved by Urban Forestry Services.
- 2 Tree protection barriers for trees situated on the Town road allowance where visibility must be maintained can be 1.2m (4ft), high and consist of plastic web snow fencing on a wood frame made of 2"x4"s.
- 3 Where some excavate or fill has to be temporarily located near a tree protection barrier, plywood must be used to ensure no material enters the Tree Protection Zone.
- 4 All supports and bracing should be outside the Tree Protection Zone. All such supports should minimize damaging roots outside the Tree Protection Zone.
- 5 No construction activity, grade changes, surface treatment or excavations of any kind is permitted within the Tree Protection Zone.

TREE PROTECTION PLAN NOTES

- 1 If the applicant is responsible to assess potential impacts to trees located near or within an adjacent properties the applicant may be held responsible through their actions. The applicant shall also be required to reduce some trees to the satisfaction of Urban Forestry.
- 2 Tree protection barriers shall be installed to standards as detailed in this document and to the satisfaction of Urban Forestry.
- 3 Tree protection barriers must be installed using plywood clad hoarding (minimum 1.2m or 4' high) or an barrier.
- 4 Where required, signs as specified in Section 4, Tree Protection Signs must be attached to all sides of the barrier.
- 5 Prior to the commencement of any site alteration, demolition or construction, the tree protection measures specified on this plan must be installed to the satisfaction of Urban Forestry.
- 6 Once the tree protection measures are installed, Urban Forestry Services must be contacted to arrange for a site visit and assessment of the tree protection measures. Urban Forestry Services may be contacted for assistance in installing tree protection barriers. The applicant shall be responsible for the cost of the site visit.
- 7 Where changes to the location of the approved TPZ or setback control or where temporary access to the TPZ is proposed, Urban Forestry must be contacted to obtain approval prior to alteration.
- 8 Tree protection barriers must remain in place and in good condition during demolition, construction and/or site disturbance, including post-demolition, and must not be altered, moved or removed until sanctioned by Urban Forestry.
- 9 No construction activities including grade changes, surface treatments or excavation of any kind are permitted within the TPZ. No storage of materials or fill is permitted within the TPZ. No movement or use of vehicles, equipment is permitted within the TPZ. The areas identified as a TPZ must be protected and remain undisturbed at all times.
- 10 All additional tree protection or preservation requirements, above and beyond the installation of tree protection barriers, shall be indicated on this plan and approved by Urban Forestry.
- 11 If the minimum tree protection zone (TPZ) must be reduced to facilitate construction access, the tree protection barriers must be maintained at a lesser distance and the exposed portion of TPZ must be protected using a horizontal rod protection method approved by Urban Forestry.
- 12 Any roots or trunks indicated on this plan which require pruning, as approved by Urban Forestry, must be pruned in accordance with the standards set out in the Urban Forestry Services Tree Pruning Manual. All pruning must be done in accordance with the standards set out in the Urban Forestry Services Tree Pruning Manual. The applicant shall be responsible for the cost of the pruning.
- 13 The applicant shall provide a copy of the Urban Forestry Services Tree Pruning Manual to the contractor. The contractor shall be responsible for ensuring that the pruning is done in accordance with the standards set out in the Urban Forestry Services Tree Pruning Manual.
- 14 The applicant shall provide a copy of the Urban Forestry Services Tree Pruning Manual to the contractor. The contractor shall be responsible for ensuring that the pruning is done in accordance with the standards set out in the Urban Forestry Services Tree Pruning Manual.
- 15 The applicant shall provide a copy of the Urban Forestry Services Tree Pruning Manual to the contractor. The contractor shall be responsible for ensuring that the pruning is done in accordance with the standards set out in the Urban Forestry Services Tree Pruning Manual.
- 16 The applicant shall provide a copy of the Urban Forestry Services Tree Pruning Manual to the contractor. The contractor shall be responsible for ensuring that the pruning is done in accordance with the standards set out in the Urban Forestry Services Tree Pruning Manual.
- 17 The applicant shall provide a copy of the Urban Forestry Services Tree Pruning Manual to the contractor. The contractor shall be responsible for ensuring that the pruning is done in accordance with the standards set out in the Urban Forestry Services Tree Pruning Manual.
- 18 The applicant shall provide a copy of the Urban Forestry Services Tree Pruning Manual to the contractor. The contractor shall be responsible for ensuring that the pruning is done in accordance with the standards set out in the Urban Forestry Services Tree Pruning Manual.
- 19 The applicant shall provide a copy of the Urban Forestry Services Tree Pruning Manual to the contractor. The contractor shall be responsible for ensuring that the pruning is done in accordance with the standards set out in the Urban Forestry Services Tree Pruning Manual.
- 20 The applicant shall provide a copy of the Urban Forestry Services Tree Pruning Manual to the contractor. The contractor shall be responsible for ensuring that the pruning is done in accordance with the standards set out in the Urban Forestry Services Tree Pruning Manual.

No.	Issue/Revisions	Date	By
1	Report Submission	25 June 21	KD
2	Report Revision	25 Nov. 21	KH
3	Report Revision	29 Nov. 21	KH
4	Report Revision	9 Dec. 21	KH

Base Data: Shante Geomatics Ltd. (survey), Raw Design (site plan)

Client: **Bara Group**

Project: **2163 & 2169 Sixth Line**
 Oakville, ON

Existing Conditions, Proposed Site Plan, Tree Inventory and Preservation Plan

Project: P2254 Figure: **1**

Date: 25 June 2021

Scale: 1:550

146 Lansdowne Road West
 PO Box 1087, Lakeshore, ON L4Y 4W2
 Phone: 1-905-887-1871
 Fax: 1-905-887-1872
 Email: info@kuntzforestry.ca
 Website: www.kuntzforestry.ca