

ELEVATION NOTE

ELEVATIONS ARE BASED ON THE CANADIAN GEODETIC DATUM AND WERE DERIVED FROM TOP OF CANVILLE BENCH MARK 501883307, HAVING A PUBLISHED ELEVATION OF 162.917 METERS AND CAN BE CONVERTED TO FEET BY DIVIDING BY 0.3048.

METRIC

DISTANCES SHOWN ON THIS PLAN ARE IN METERS AND CAN BE CONVERTED TO FEET BY DIVIDING BY 0.3048.

LEGEND

SYMBOL	NOTES	EXISTING
M	SURVEY MONUMENT FOUND	
ST	SURVEY MONUMENT PLANTED	
SB	WITNESS MONUMENT	
SSB	STANDARD IRON BAR	
SB	SHORT STANDARD IRON BAR	
IB	IRON BAR	
CB	CUT CROSS	
N, S, E, W	NORTH, SOUTH, EAST, WEST	
P1	PLAN LAYDOWN BY JACKMAN SURVEYORS LTD., O.S.	
P2	DATED JUNE 2, 2008	
P3	DATED OCT. 2, 1988	
P4	PLAN H8-89	
P5	PLAN H8-82	
MH	MANHOLE	
SA	SAMESE CONNECTION	
SC	SEWER CONTROL VALVE	
BI	BELL MANHOLE	
BM	BELL MANHOLE	
FI	FIRE HYDRANT	
WV	WATER VALVE	
CV	GAS VALVE	
HT	HYDRO TRANSFORMER	
HW	HAND WELL	
CHP	CONCRETE HYDRO POLE	
WHP	WOODEN HYDRO POLE	
CLS	CONCRETE LIGHT STANDARD	
MLS	METAL LIGHT STANDARD	
BS	BUSH	
MP	METAL POLE	
DT	DECIDUOUS TREE	
CT	CONIFEROUS TREE	
BR	BRICK	
ST	STONE	

INTEGRATION NOTE

OBSERVED REFERENCE POINTS (ORP) DERIVED FROM GPS OBSERVATIONS USING THE SHARPEY NETWORK, AND ARE REFERRED TO UTM ZONE 17, CENTRAL MERIDIAN 81707 WEST LONGITUDE, NAD 83 (CGRS) (2011).

POINT ID	NORTHING	EASTING
ORP 0	4813022.82	805856.40
ORP 1	4813164.85	805866.88
ORP 2	4813277.74	806041.83
ORP 3	4813312.10	805948.63

COORDINATES ARE TO AN URBAN ACCURACY AS PER SEC. 14 (2) OF ONT. REG. 216/10. DISTANCES ARE GROUND AND CAN BE CONVERTED TO GRID BY MULTIPLYING BY THE COMBINED SCALE FACTOR OF 0.999724.

SURVEYOR'S CERTIFICATE

I CERTIFY THAT:
1. THIS SURVEY AND PLAN ARE CORRECT AND IN ACCORDANCE WITH THE SURVEYS ACT.
2. THE SURVEYS ACT AND THE REGULATIONS MADE UNDER THEM.
3. THE SURVEY WAS COMPLETED ON SEPTEMBER 5, 2018.

D. A. WELTON
Professional Land Surveyor
Ontario
No. 14226
14226 Nelson

SPEIGHT, VAN NOSTRAND & GIBSON LIMITED
ONTARIO LAND SURVEYORS
790 DUNDAS STREET WEST, SUITE 400
TORONTO, ONTARIO M5G 1K4
TEL: 416 248-2482 (TOLL FREE) FAX: 416 749-7896
E-MAIL: info@speightvan.com

DRAWN BY: F. P. S.F.E. D. FILE NAME: A100237.DWG
CHECKED BY: D. A. W. PLOT SCALE: MET. 1:40.25
JOB No.: 180-0237 PLOTTED: Sept. 13, 2018
REF. No.: 1-4226 Nelson UPDATED:

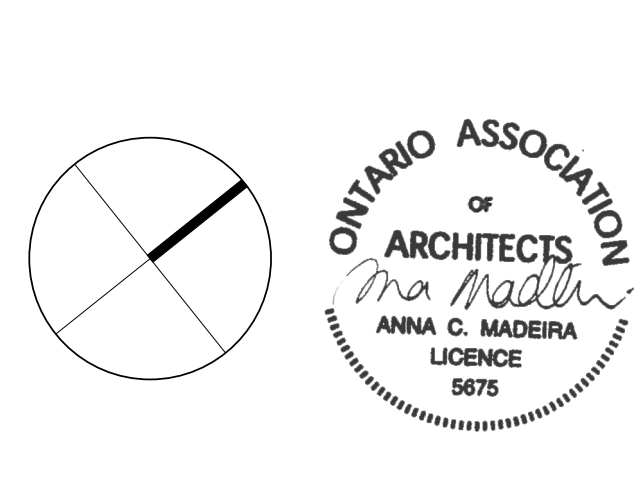
2 Legend (Topographic) & Survey Information
SCALE: NTS

SITE AND GROUND PLAN LEGEND:

(Symbol)	PROPERTY LINE
(Symbol)	LINE OF UNDERGROUND PARKING GARAGE BELOW
(Symbol)	MAIN BUILDING ENTRANCE
(Symbol)	SECONDARY BUILDING ENTRANCE
(Symbol)	BUILDING EXIT
(Symbol)	VEHICLE / LOADING ENTRANCE / EXIT
(Symbol)	DIRECTION OF TRAFFIC
(Symbol)	FIRE HYDRANT
(Symbol)	SIAMESE CONNECTION
(Symbol)	MANHOLE COVER
(Symbol)	AREA DRAIN
(Symbol)	CATCH BASIN
(Symbol)	EXISTING LIGHT
(Symbol)	PROPOSED 14' LIGHT POLE
(Symbol)	PROPOSED 12' LIGHT POLE
(Symbol)	PROPOSED WALL MOUNTED LIGHT FIXTURE
(Symbol)	SPOT ELEVATION REFERENCE
(Symbol)	F.F.E. FINISH FLOOR ELEVATION
(Symbol)	PROPOSED ELEVATION
(Symbol)	HORIZONTAL BICYCLE PARKING 600mm (W) x 1800mm (L)
(Symbol)	EXISTING TO REMAIN
(Symbol)	SOIL
(Symbol)	PLANTING
(Symbol)	LOCKSTONE PAVING
(Symbol)	FIRE ACCESS ROUTE, HEAVY DUTY PAVING ASSEMBLY TO BE DESIGNED TO MEET THE LOADS IMPOSED BY FIRE FIGHTING EQUIPMENT
(Symbol)	SITE SERVICING (REFER TO CIVIL)

Date	No.	Description
2021-08-13		ISSUED FOR SITE PLAN APPROVAL
2020-10-14		RE-ISSUED FOR REZONING
2019-10-28		ISSUED FOR REZONING

ISSUE RECORD



BDP. Quadrangle

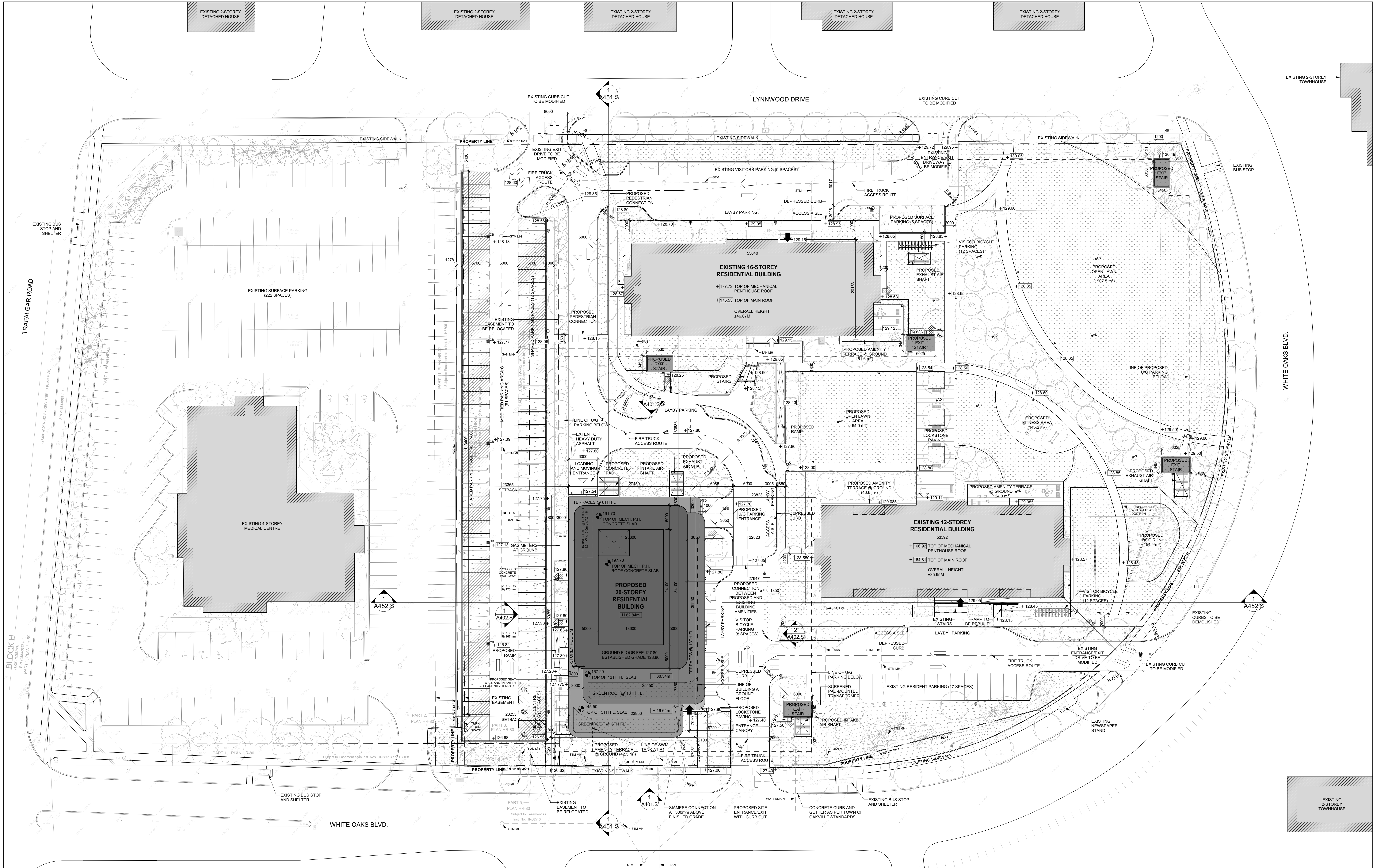
Quadrangle Architects Limited
901 King Street West, Suite 701 Toronto, ON M5V 3H5
416.598.1240 www.bdpquadrangle.com

1226-1230 White Oaks Boulevard and 350 Lynnwood Drive
Oakville, ON
for Kamato Holdings Limited

17034 As indicated MP HT
PROJECT SCALE DRAWN REVIEWED

Site Plan
A101.S

Note: This drawing is the property of the Architect and may not be reproduced or used without the expressed consent of the Architect. The Contractor is responsible for checking and verifying all sizes and dimensions and shall report all discrepancies to the Architect and obtain authorization prior to commencing work.



1 SITE PLAN
SCALE: 1:300

C:\Users\pmsm\Documents\A101_S_17034_1230 White Oaks Blvd_SPA_2020_Michael@quadrangle.ca.rvt