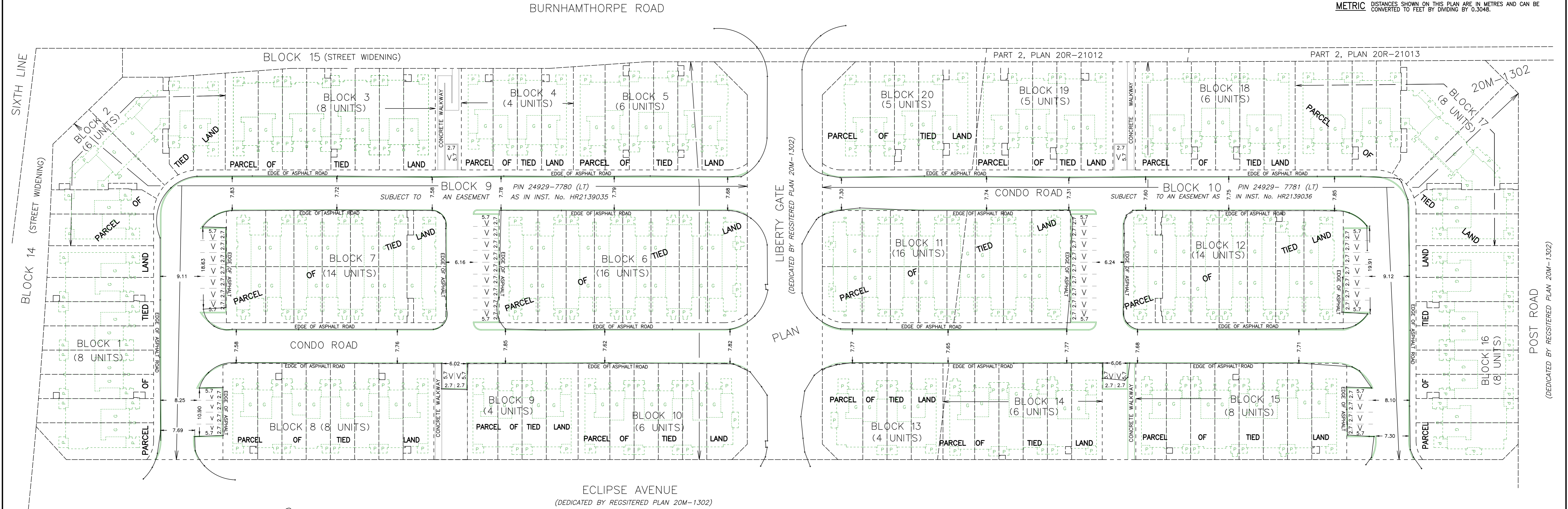


SKETCH SHOWING AS-BUILT ASPHALT ROAD ON
PART OF BLOCKS 9 AND 10
REGISTERED PLAN 20M-1302
 TOWN OF OAKVILLE
 REGIONAL MUNICIPALITY OF HALTON

SCALE 1 : 400

J.D. BARNES LIMITED
 © COPYRIGHT 2026

METRIC DISTANCES SHOWN ON THIS PLAN ARE IN METRES AND CAN BE CONVERTED TO FEET BY DIVIDING BY 0.3048.



REGISTERED

LEGEND

- ∇ DENOTES PROPOSED VISITOR PARKING
- DENOTES PROPOSED CURB

NOTES

BEARINGS ARE UTM GRID, DERIVED FROM THE REAL TIME NETWORK (RTN) OBSERVATIONS, UTM ZONE 17, NAD83 (CSRS)(2010.0).

DISTANCES ARE GROUND AND CAN BE CONVERTED TO GRID BY MULTIPLYING BY THE COMBINED SCALE FACTOR OF 0.999702.

CURBS HAVE NOT BEEN INSTALLED AT THE TIME OF SURVEY. ONLY BASE LAYER OF ASPHALT WAS PRESENT AT THE TIME OF SURVEY.

FIELD WORK COMPLETED ON THE 6TH DAY OF MAY, 2026.

J.D. BARNES LIMITED
 SURVEYING
 MAPPING
 GIS

LAND INFORMATION SPECIALISTS
 401 WHEELABRATOR WAY, SUITE A, MILTON, ON L9T 3C1
 T: (905) 875-9955 F: (905) 875-9956 www.jdbarnes.com

DRAWN BY: MB	CHECKED BY: XX	REFERENCE NO.: 21-30-803-02-F
DATED: 05/28/2026		

FILE: 6:121-30-803-02-01.dwg