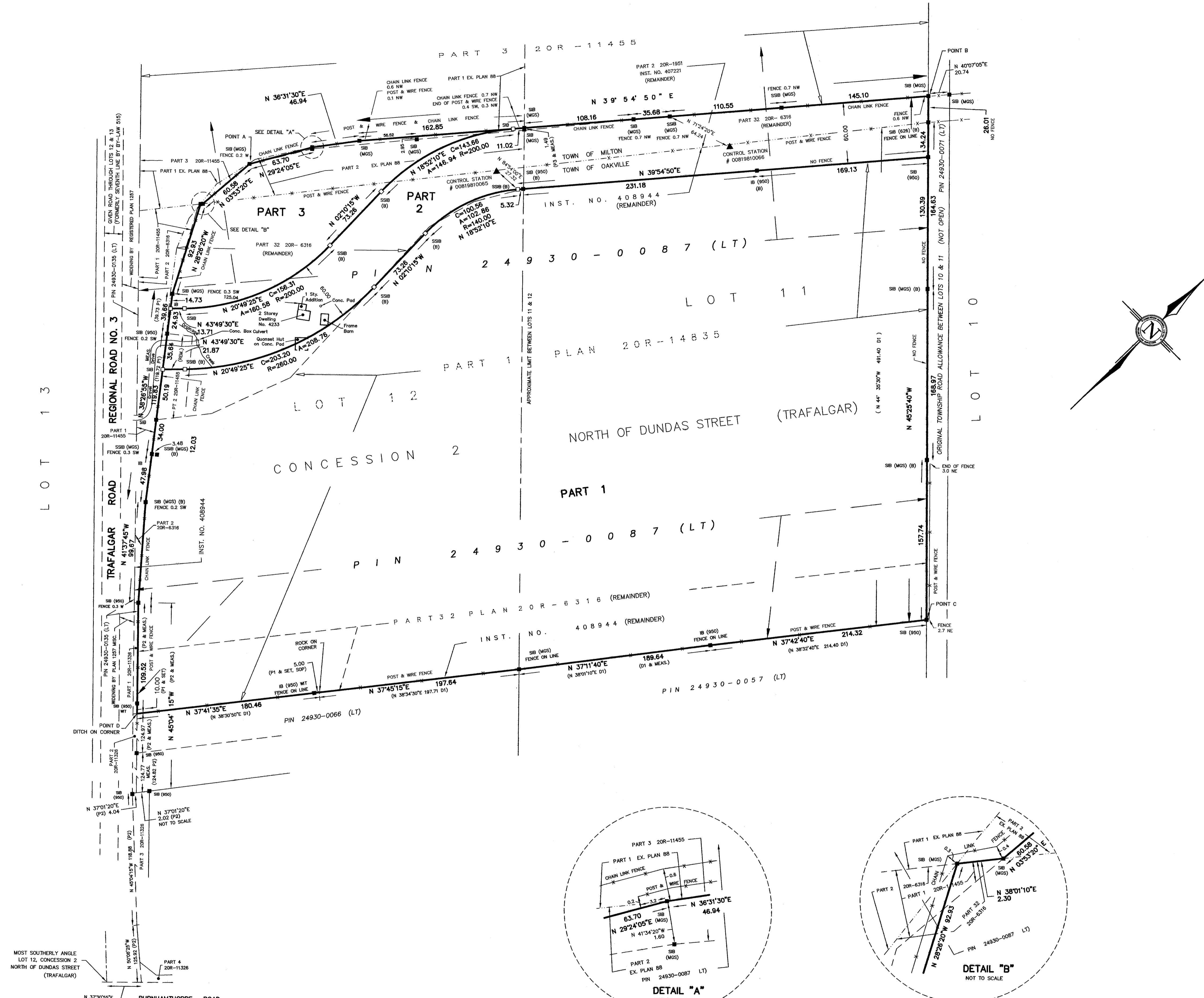


1 REQUIRE THIS PLAN TO BE DEPOSITED UNDER THE LAND TITLES ACT.
 DATE: NOVEMBER 17, 2008
 THOMAS J. PACKOWSKI
 ONTARIO LAND SURVEYOR

PLAN 20R-18052
 RECEIVED AND DEPOSITED
 DATE: DEC. 1, 2008
 "Lisa McCreddie"
 LAND REGISTRAR FOR THE LAND TITLES DIVISION OF HALTON (NO. 20)



SCHEDULE				
PART	LOT	CONCESSION	AREA Ha.	PIN
1	PART OF 11 & 12	2	32.909	PART OF 24930-0087 (LT)
2	PART OF 11 & 12	2	4.855	PART OF 24930-0087 (LT)
3	PART OF 12	2	2.278	PART OF 24930-0087 (LT)

OWNERS:
 PART 1: HER MAJESTY THE QUEEN, IN RIGHT OF ONTARIO AS REPRESENTED BY THE CHAIR OF THE MANAGEMENT BOARD OF CABINET
 PART 2: HER MAJESTY THE QUEEN, IN RIGHT OF ONTARIO AS REPRESENTED BY THE CHAIR OF THE MANAGEMENT BOARD OF CABINET
 PART 3: HER MAJESTY THE QUEEN, IN RIGHT OF ONTARIO AS REPRESENTED BY THE CHAIR OF THE MANAGEMENT BOARD OF CABINET

PARTS 1, 2 & 3 COMPRISE PART OF PIN 24930-0087 (LT)

PLAN OF SURVEY OF
 PART OF LOTS 11 & 12
 CONCESSION 2 NORTH OF DUNDAS STREET
 TOWN OF MILTON
 AND
 PART OF LOTS 11 & 12
 CONCESSION 2 NORTH OF DUNDAS STREET
 TOWN OF OAKVILLE
 GEOGRAPHIC TOWNSHIP OF TRAFALGAR
 REGIONAL MUNICIPALITY OF HALTON

40 0 40 80 120
 GRAPHIC SCALE: 1:2000 METRES
 CUNNINGHAM McCONNELL LIMITED
 ONTARIO LAND SURVEYOR

- LEGEND**
- DENOTES SURVEY MONUMENT FOUND
 - SURVEY MONUMENT SET
 - SB (MGS) STANDARD IRON BAR
 - SSB SHORT STANDARD IRON BAR
 - IB IRON BAR
 - WIT WITNESS
 - IF IRON PIPE
 - S50 CUNNINGHAM McCONNELL LIMITED
 - (MGS) MINISTRY OF GOVERNMENT SERVICES
 - (B) BURIED 0.30 METRES BELOW GROUND LEVEL
 - P1 PLAN 20R-14835
 - P2 PLAN 20R-11328
 - D1 INST. NO. 408944
 - P3 PLAN 20R-11455
 - SOP SET ON PRODUCTION
 - 628 H.D. SEWELL O.L.S.

METRIC
 DISTANCES SHOWN ON THIS PLAN ARE IN METRES AND CAN BE CONVERTED TO FEET BY DIVIDING BY 0.3048.

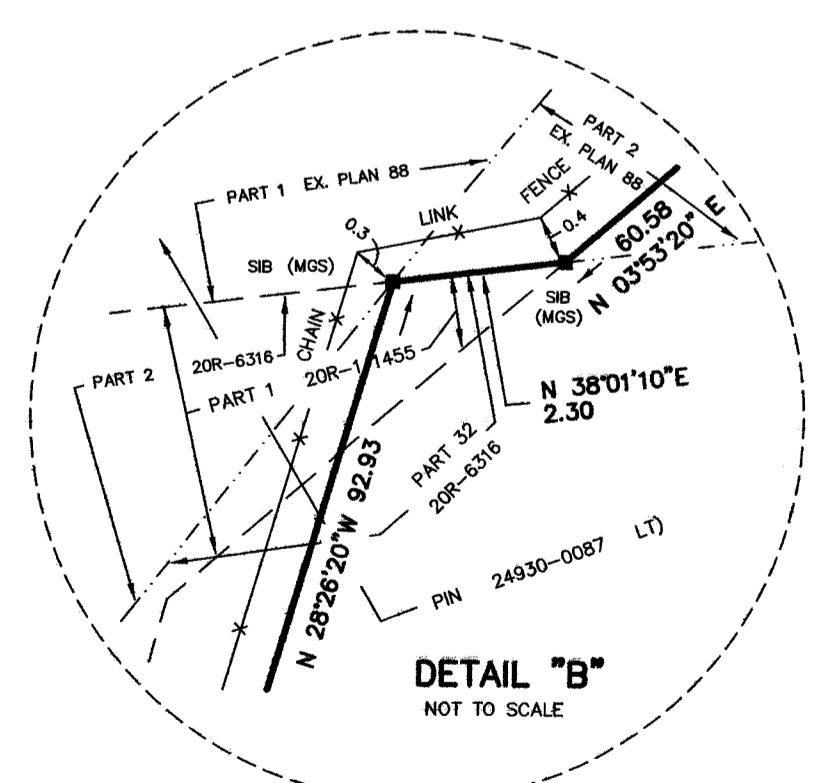
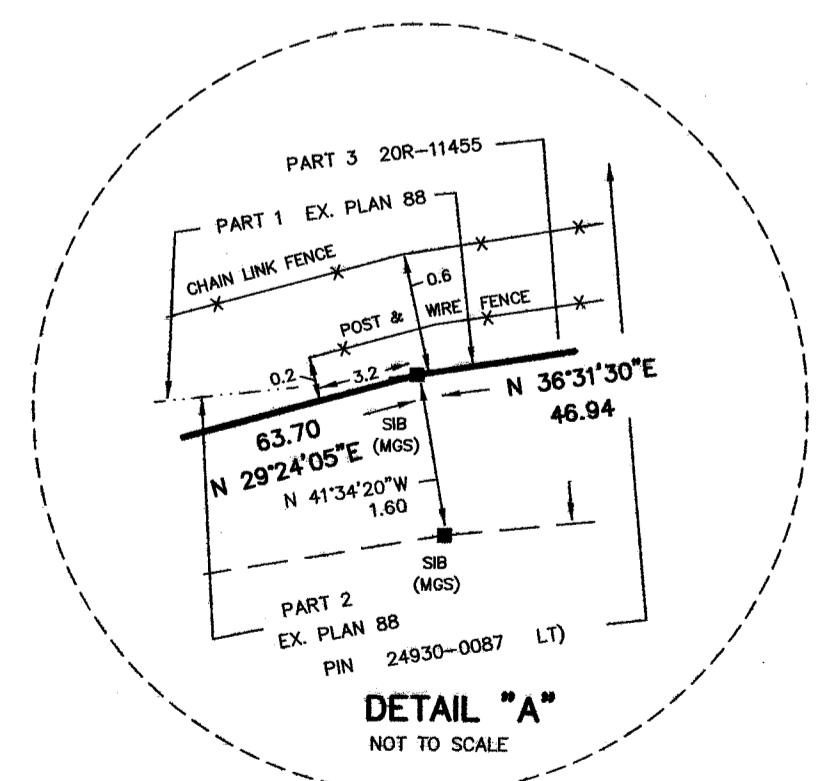
BEARING NOTE
 ALL BEARINGS HEREON ARE GRID U.T.M. PROJECTION, ZONE 17, CENTRAL MERIDIAN 81° WEST LONGITUDE, NAD 83 BEING RELATED TO THE MINISTRY OF TRANSPORTATION & COMMUNICATIONS CONTROL STATIONS # 00819810065 & 00819810066

DISTANCE NOTE
 ALL DISTANCES SHOWN HEREON ARE GROUND AND CAN BE CONVERTED TO GRID BY MULTIPLYING BY THE SCALE FACTOR OF 0.99970

COORDINATE TABLE

CONTROL STATION	NORTH	EAST
00819810066	4818475.013	601661.327
00819810065	4818284.873	601519.922
POINT A	4818128.207	601344.501
POINT B	4818650.598	601784.421
POINT C	4818287.621	602132.842
POINT D	4817668.096	601555.911

SURVEYORS CERTIFICATE
 I CERTIFY THAT:
 1. THIS SURVEY AND PLAN ARE CORRECT AND IN ACCORDANCE WITH THE SURVEYS ACT, THE SURVEYORS ACT AND THE LAND TITLES ACT AND THE REGULATIONS MADE UNDER THEM.
 2. THE SURVEY WAS COMPLETED ON NOVEMBER 13, 2008.
 DATE: NOVEMBER 17, 2008
 THOMAS J. PACKOWSKI
 ONTARIO LAND SURVEYOR



MOST SOUTHERLY ANGLE LOT 12, CONCESSION 2 NORTH OF DUNDAS STREET (TRAFALGAR)

BURNHAMTHORPE ROAD ORIGINAL TOWNSHIP ROAD ALLOWANCE BETWEEN CONCESSIONS 1 & 2 NORTH OF DUNDAS STREET (TRAFALGAR)

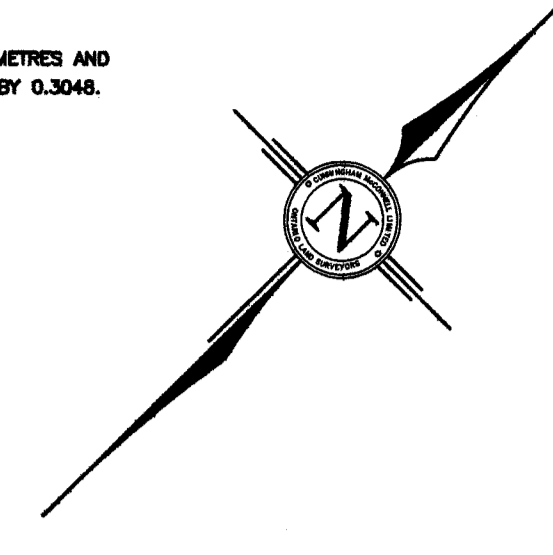
CUNNINGHAM McCONNELL LIMITED
 ONTARIO LAND SURVEYORS
 205 MAIN STREET MILTON, ONTARIO L7T 1N7
 PHONE (905) 878-6672
 FAX (905) 878-6672
 EMAIL ADDRESS: cml@primus.ca

1200 SPEERS ROAD, UNIT 38 OAKVILLE, ONTARIO L6L 2X4
 PHONE (905) 845-3497
 FAX (905) 845-3519
 EMAIL ADDRESS: cml@ccogeco.net

O.L.S. FILE # 07-3808 DWG-07-3808B CRD-07-3809

PLAN OF SURVEY OF
PART OF LOT 13 & 14
CONCESSION 2 NORTH OF DUNDAS STREET
GEOGRAPHIC TOWNSHIP OF TRAFALGAR
TOWN OF OAKVILLE
AND
PART OF LOTS 13 & 14
CONCESSION 2 NORTH OF DUNDAS STREET
GEOGRAPHIC TOWNSHIP OF TRAFALGAR
TOWN OF MILTON
REGIONAL MUNICIPALITY OF HALTON
SCALE 1:1500
GRAPHIC SCALE
CUNNINGHAM McCONNELL LIMITED
ONTARIO LAND SURVEYOR

METRIC
DISTANCES SHOWN ON THIS PLAN ARE IN METRES AND
CAN BE CONVERTED TO FEET BY DIVIDING BY 0.3048.

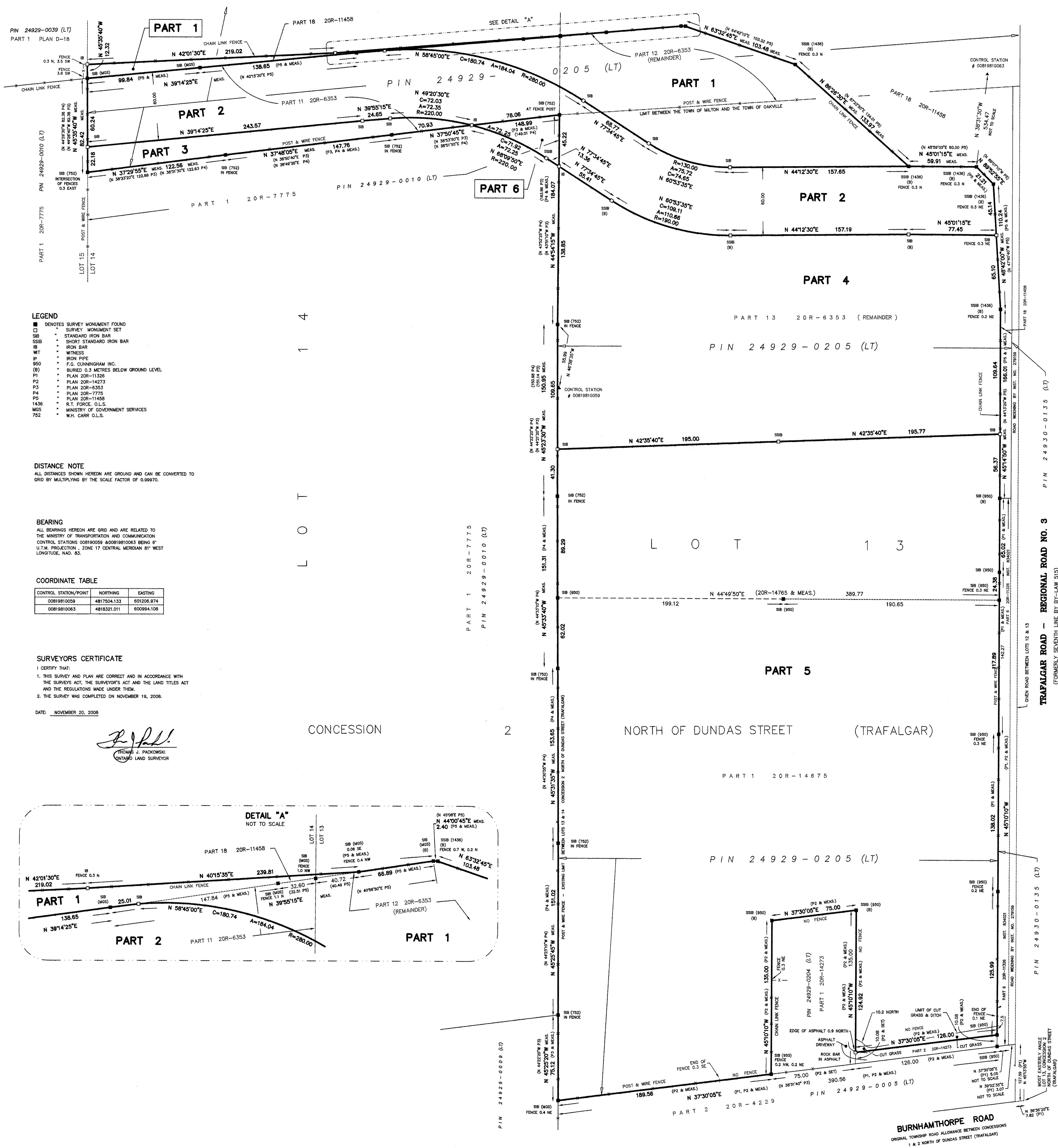


SCHEDULE					
PART	LOT	CONCESSION	AREA HA	PIN	OWNER
1	PART OF LOTS 13 & 14	2	2.799	PART OF 24929-0205 (LT)	HER MAJESTY THE QUEEN IN RIGHT OF ONTARIO AS REPRESENTED BY THE CHAIR OF THE MANAGEMENT BOARD OF CABINET
2	PART OF LOT 14	2	4.789	PART OF 24929-0205 (LT)	
3	PART OF LOT 14	2	0.054	PART OF 24929-0205 (LT)	
4	PART OF LOT 13	2	7.386	PART OF 24929-0205 (LT)	
5	PART OF LOT 13	2	20.457	PART OF 24929-0205 (LT)	
6	PART OF LOT 14	2	0.153	PART OF 24929-0010 (LT)	

I REQUIRE THIS PLAN TO BE
DEPOSITED UNDER THE LAND
TITLES ACT.
DATE: NOVEMBER 20, 2008
THOMAS J. PACHOWSKI
ONTARIO LAND SURVEYOR

PLAN 20R-18051
RECEIVED AND DEPOSITED
DATE: DEC 1, 2008
Lisa McCreddie
LAND REGISTRAR FOR THE LAND
TITLES DIVISION OF HALTON (NO. 20)

PARTS 1, 2, 3, 4 & 5 COMPRISE PART OF 24929-0205 (LT)
PART 6 COMPRISES PART OF 24929-0010 (LT)



- LEGEND
- DENOTES SURVEY MONUMENT FOUND
 - SURVEY MONUMENT SET
 - SB STANDARD IRON BAR
 - SSB SHORT STANDARD IRON BAR
 - IB IRON BAR
 - WT WITNESS
 - IP IRON PIPE
 - PS F.C. CUNNINGHAM INC.
 - (B) BURIED 0.3 METRES BELOW GROUND LEVEL
 - P1 PLAN 20R-11326
 - P2 PLAN 20R-14273
 - P3 PLAN 20R-6353
 - P4 PLAN 20R-7775
 - P5 PLAN 20R-11458
 - 1436 S.T. FORCE, O.L.S.
 - MCS MINISTRY OF GOVERNMENT SERVICES
 - 752 W.H. CARR, O.L.S.

DISTANCE NOTE
ALL DISTANCES SHOWN HEREON ARE GROUND AND CAN BE CONVERTED TO
GRID BY MULTIPLYING BY THE SCALE FACTOR OF 0.99970.

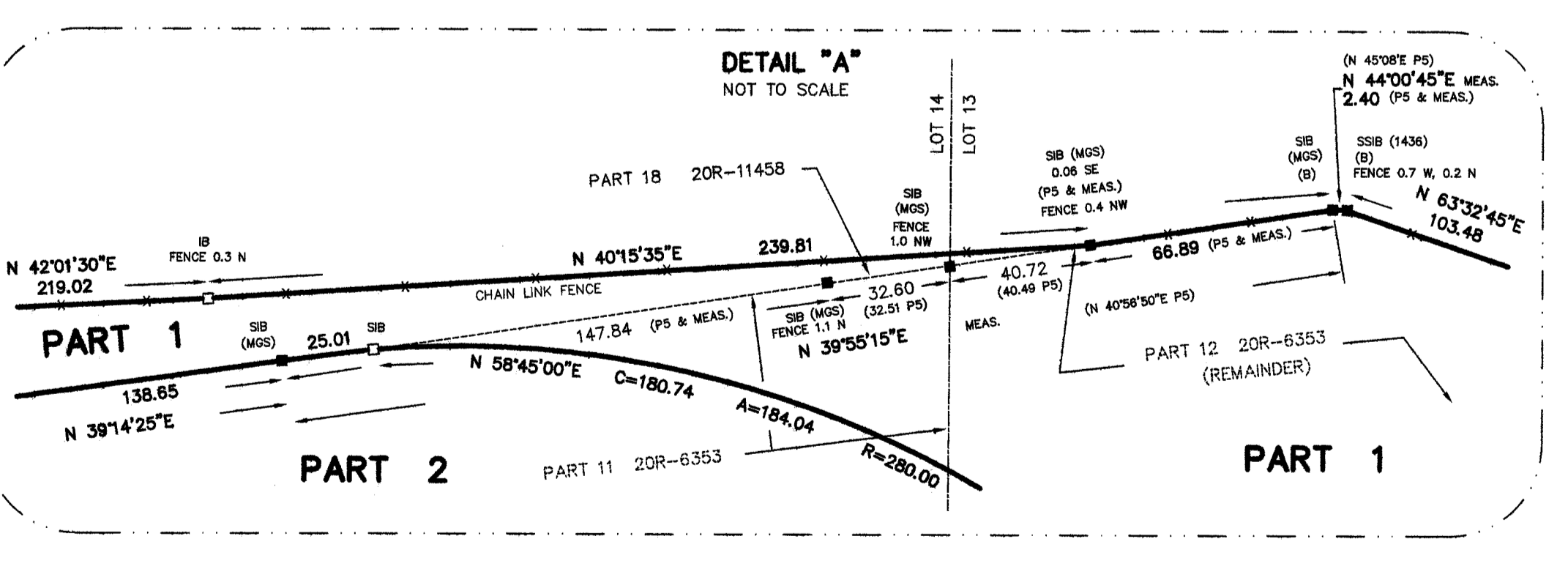
BEARING
ALL BEARINGS HEREON ARE GRID AND ARE RELATED TO
CONTROL STATIONS 008190059 AND 008191003 BENS 6'
U.T.M. PROJECTION, ZONE 17 CENTRAL MERIDIAN 81 WEST
LONGITUDE, NAD, 83.

COORDINATE TABLE

CONTROL STATION/POINT	NORTHING	EASTING
0081910059	4817554.133	601208.874
0081910063	4818321.071	600994.108

SURVEYS CERTIFICATE
I CERTIFY THAT:
1. THIS SURVEY AND PLAN ARE CORRECT AND IN ACCORDANCE WITH
THE SURVEYS ACT, THE SURVEYOR'S ACT AND THE LAND TITLES ACT
AND THE REGULATIONS MADE UNDER THEM.
2. THE SURVEY WAS COMPLETED ON NOVEMBER 18, 2008.

THOMAS J. PACHOWSKI
ONTARIO LAND SURVEYOR



CUNNINGHAM McCONNELL LIMITED
ONTARIO LAND SURVEYORS
205 MAIN STREET
MILTON, ONTARIO L9T 1N7
PHONE (905) 878-6672
FAX (905) 878-6672
EMAIL ADDRESS: cml@cmlls.com

1200 SPEERS ROAD, UNIT 38
OAKVILLE, ONTARIO L6L 2J4
PHONE (905) 845-3497
FAX (905) 845-3519
EMAIL ADDRESS: cml@cmlls.com