

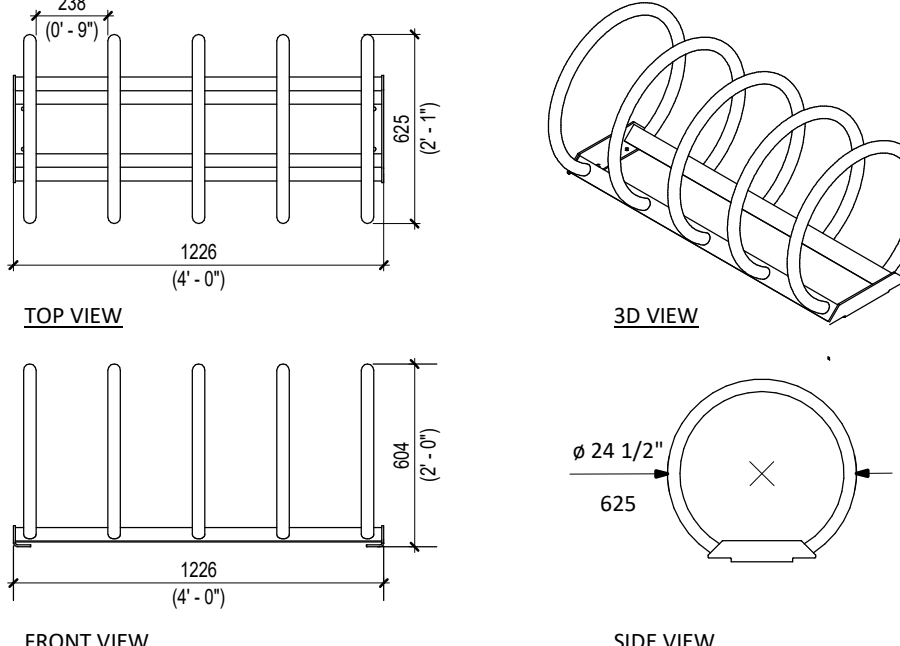
NOTES:

- REFER TO SITE PLAN FOR SPECIFIC PROJECT SITE PLANNING DIMENSIONS.
- ALL PARKING LOT LINE STRIPING TO BE PAINTED WITH PAPA PAINT 5 MP - YELLOW OR EQUAL.
- ALL PARKING DIMENSIONS SHOWN ARE MINIMUM. CONFIRM REQUIRED SIZES WITH LOCAL AUTHORITY HAVING JURISDICTION.

ACCEPTABLE MANUFACTURERS:

SUREGUARD SHIELD (CW SUREGUARD "SURE-SEAL" INSTALLATION KIT) SIZE "X-42"
 COLOR: YELLOW
 AS MANUFACTURED BY "SUREGUARD SECURITY PRODUCTS (ADAM LELAND)"
 PO. BOX 1202, 820 VICTORIA ST. N.
 KITCHENER, ONT. N2C 4G8
 PH: (519) 772-1075, FX: (519) 742-8256
 E-MAIL: AULAN@SUREGUARD.CA

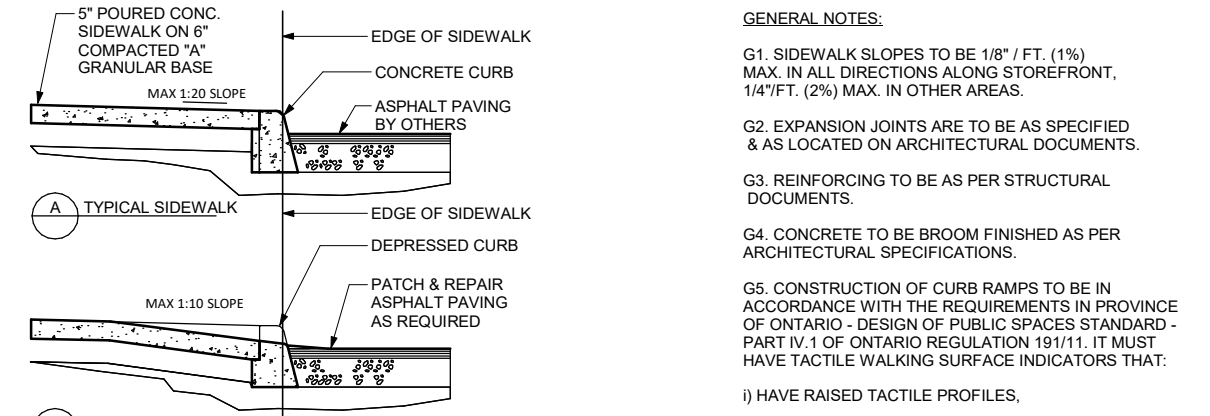
1 STANDARD PARKING DETAIL
1 : 200



MAGLIN SITE FURNITURE INC.
350 SERIES
MBR350-5-S
MATERIALS:
FINISH: Bike Rack is constructed using H.S. steel tube, formed steel and solid steel angle. All steel components are protected with E-Coat rust proofing. The Maglin Powdercoat System provides a durable finish on all metal surfaces.
INSTALLATION: The bike rack is delivered pre-assembled. It is available with a surface mount installation.

DIMENSIONS:
Height: 23.81" (60.48cm)
Length: 48.25" (122.56cm)
Diameter: 24.63" (62.56cm)
Weight: 78.60lbs (35.65kg)

2 BICYCLE RACK DETAIL - 6 SPACES
1 : 25

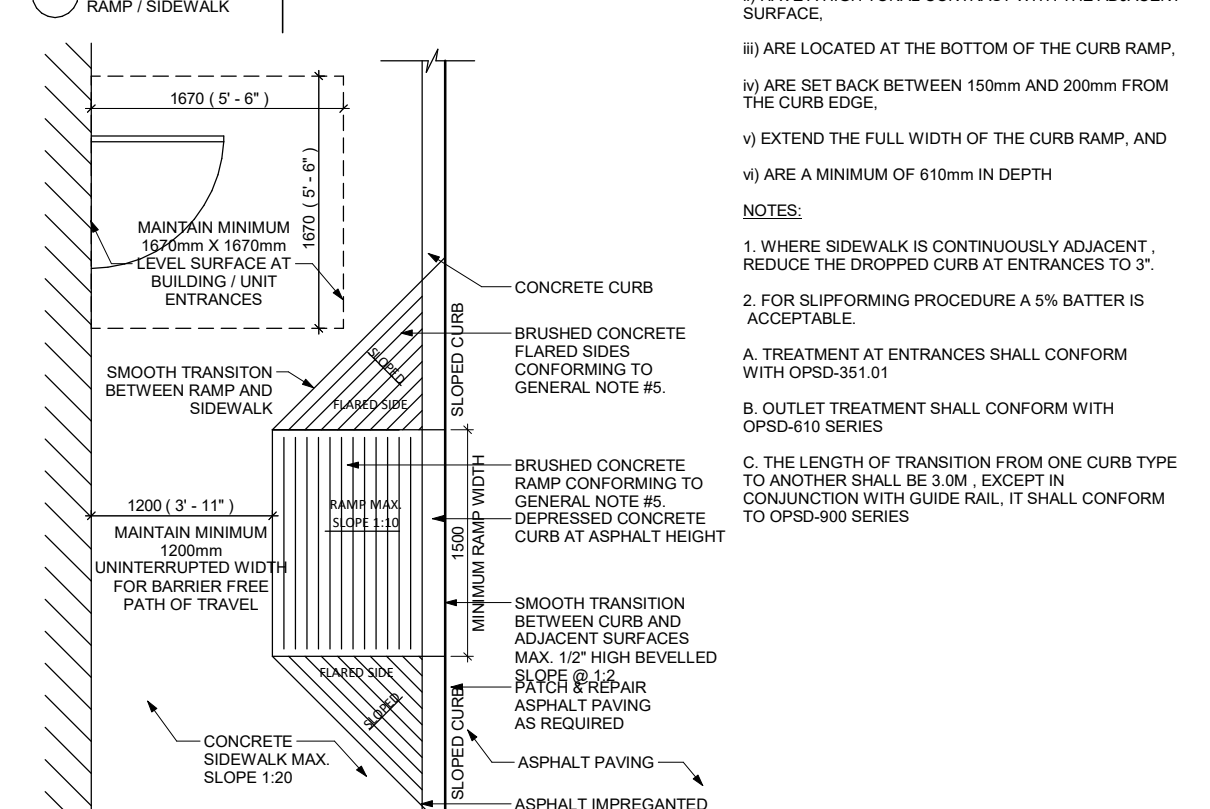


GENERAL NOTES:

- SIDEWALK SLOPES TO BE 1/8" (1%) MAX. IN ALL DIRECTIONS ALONG STOREFRONT, 1/4" (2%) MAX. IN OTHER AREAS.
- EXPANSION JOINTS ARE TO BE AS SPECIFIED, & AS LOCATED ON ARCHITECTURAL DOCUMENTS.
- REINFORCING TO BE AS PER STRUCTURAL DOCUMENTS.
- CONCRETE TO BE BROOM FINISHED AS PER ARCHITECTURAL SPECIFICATIONS.
- CONSTRUCTION OF CURB RAMPS TO BE IN ACCORDANCE WITH THE REQUIREMENTS IN PROVINCE OF ONTARIO - DESIGN OF PUBLIC SPACES STANDARD - PART IV.1 OF ONTARIO REGULATION 19/11. IT MUST HAVE TACTILE WALKING SURFACE INDICATORS THAT HAVE RAISED TACTILE PROFILES.
- HAVE A HIGH TONAL CONTRAST WITH THE ADJACENT SURFACE.
- ARE LOCATED AT THE BOTTOM OF THE CURB RAMP.
- ARE SET BACK BETWEEN 150mm AND 200mm FROM THE CURB EDGE.
- EXTEND THE FULL WIDTH OF THE CURB RAMP, AND
- ARE A MINIMUM OF 610mm IN DEPTH.

NOTES:

- WHERE SIDEWALK IS CONTINUOUSLY ADJACENT, REDUCE THE DROPPED CURB AT ENTRANCES TO 3".
- FOR SLIP-RESISTANCE A 5% BATTER IS ACCEPTABLE.
- TREATMENT AT ENTRANCES SHALL CONFORM WITH OPSD-351.01
- OUTLET TREATMENT SHALL CONFORM WITH OPSD-910 SERIES
- LENGTH OF TRANSITION FROM ONE CURB TYPE TO ANOTHER SHALL BE 3.0M, EXCEPT IN CONJUNCTION WITH GUIDE RAIL, IT SHALL CONFORM TO OPSD-900 SERIES



LEGEND

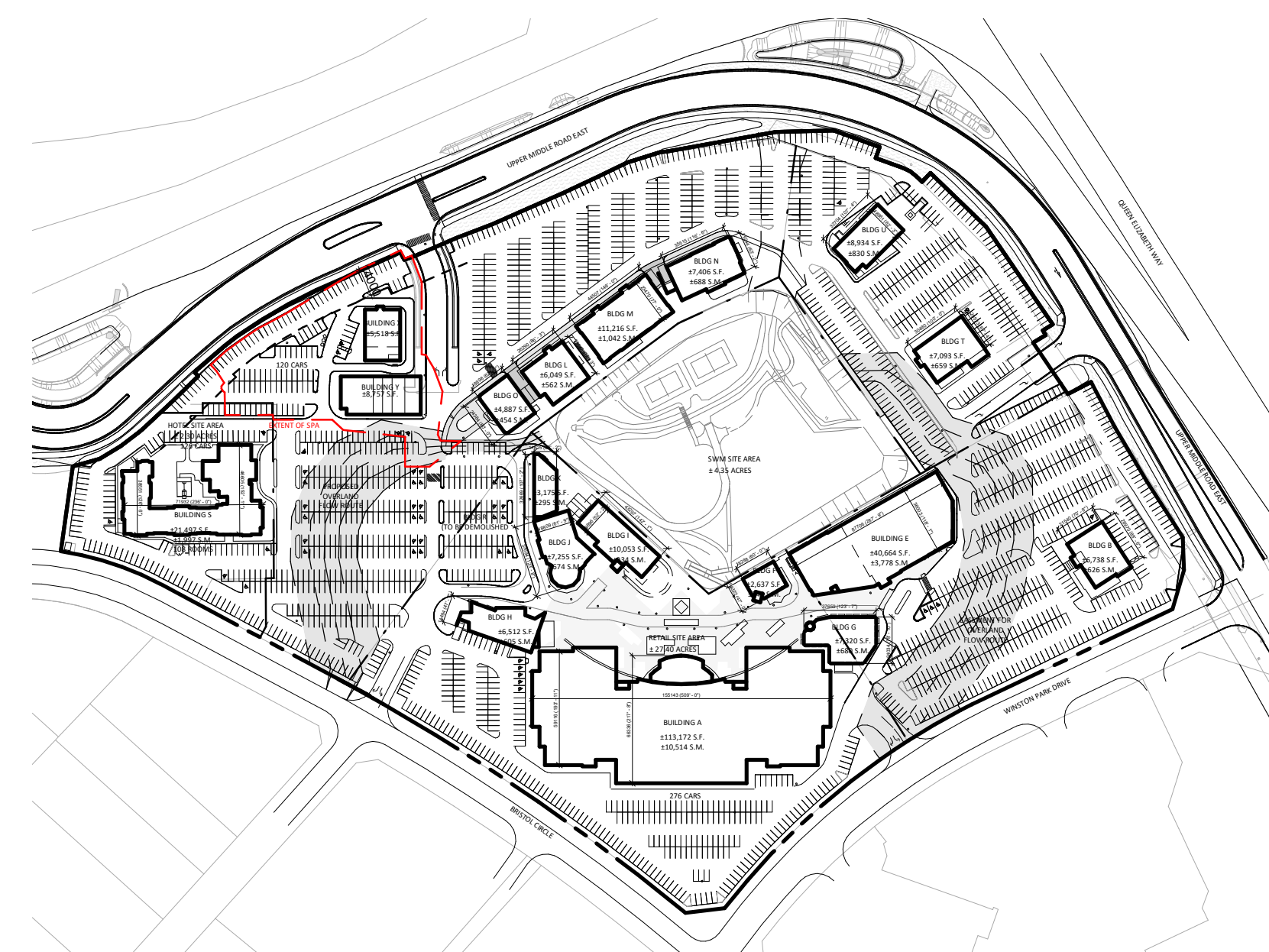
- PROPOSED ENTRANCE ARROW
- PROPOSED EXIT ARROW
- PROPOSED FIRE & TRUCK ROUTE (HEAVY DUTY ASPHALT)
- PROPOSED BUILDINGS, CURBS, PAINTED AREAS
- EXISTING BUILDINGS, CURBS, PAINTED AREAS
- DEMOLISHED BUILDINGS AND CURBS
- EXISTING LIGHT

NOTES:

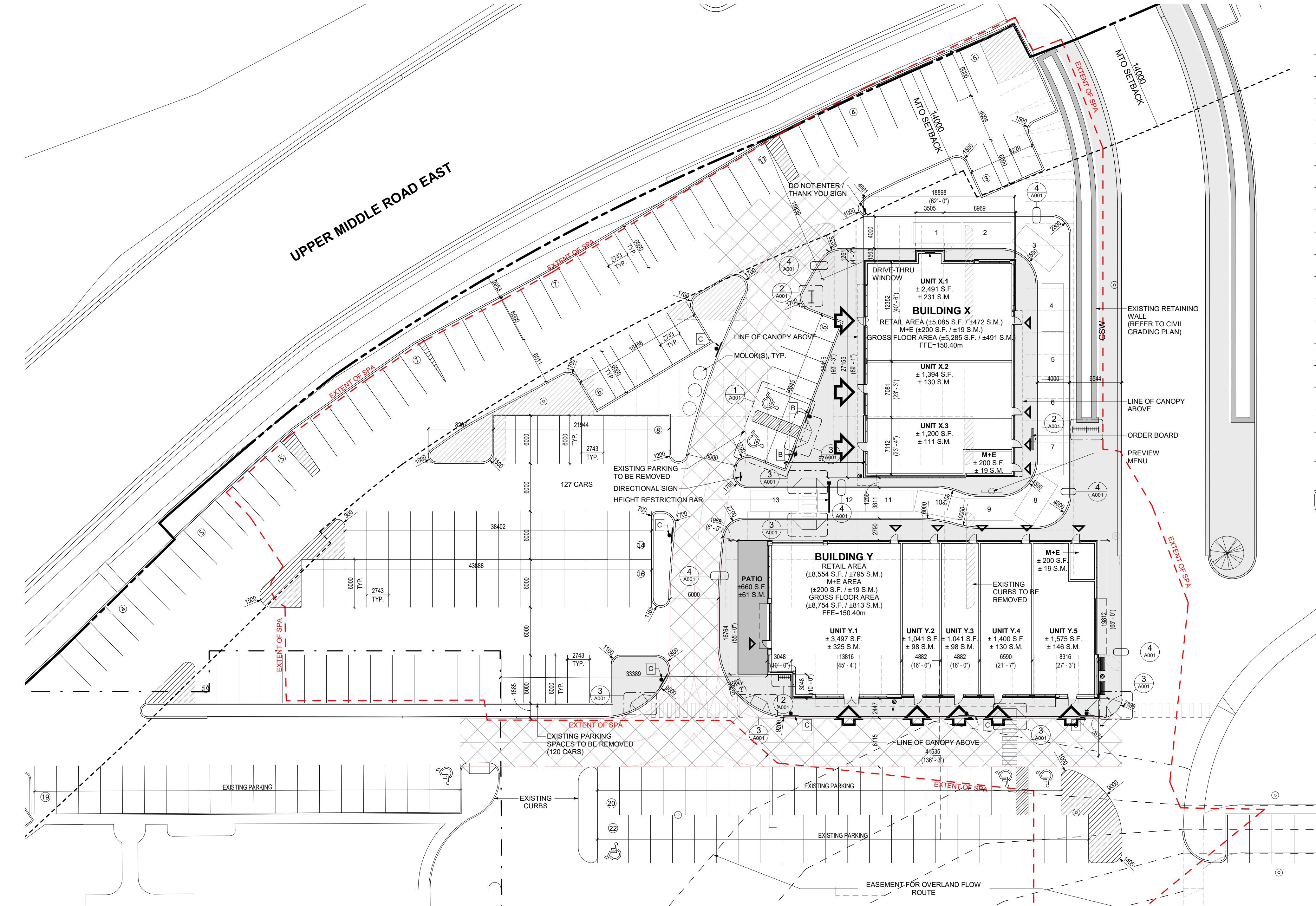
- TREATMENT AT ENTRANCES SHALL CONFORM WITH OPSD-351.01
- OUTLET TREATMENT SHALL CONFORM WITH OPSD-910 SERIES
- LENGTH OF TRANSITION FROM ONE CURB TYPE TO ANOTHER SHALL BE 3.0M, EXCEPT IN CONJUNCTION WITH GUIDE RAIL, IT SHALL CONFORM TO OPSD-900 SERIES

3 CURB RAMP
1 : 50

4 CONCRETE CURB SECTION
1 : 200



5 OVERALL SITE PLAN
1 : 3000



6 SITE PLAN
1 : 300

REQUIRED PARKING CALCULATIONS (ENTIRE SITE)

	GROSS FLOOR AREA (GFA)	REQUIRED PARKING
BUILDING A	±10,514 S.M.	599 SPACES
BUILDING B	±626 S.M.	36 SPACES
PATIO AREA	±145 S.M.	8 SPACES
BUILDING E	±3,778 S.M.	216 SPACES
BUILDING F	±245 S.M.	14 SPACES
PATIO AREA	±83 S.M.	5 SPACES
BUILDING G	±680 S.M.	39 SPACES
BUILDING H	±605 S.M.	35 SPACES
PATIO AREA	±102 S.M.	6 SPACES
BUILDING I	±934 S.M.	53 SPACES
PATIO AREA	±324 S.M.	18 SPACES
BUILDING J	±674 S.M.	38 SPACES
PATIO AREA	±131 S.M.	7 SPACES
BUILDING K	±295 S.M.	17 SPACES
PATIO AREA	±27 S.M.	2 SPACES
BUILDING L	±562 S.M.	32 SPACES
PATIO AREA	±116 S.M.	7 SPACES
BUILDING M	±1,042 S.M.	59 SPACES
PATIO AREA	±41 S.M.	2 SPACES
BUILDING N	±688 S.M.	39 SPACES
PATIO AREA	±114 S.M.	6 SPACES
BUILDING O	±454 S.M.	26 SPACES
PATIO AREA	±97 S.M.	6 SPACES
BUILDING S	108 ROOMS	126 SPACES
BUILDING T	±659 S.M.	38 SPACES
PATIO AREA	±57 S.M.	3 SPACES
BUILDING U	±830 S.M.	48 SPACES
BUILDING X (NEW)	±491 S.M.	28 SPACES
BUILDING Y (NEW)	±813 S.M.	46 SPACES
PATIO AREA	±61 S.M.	4 SPACES
TOTAL REQUIRED	±25,209 S.M.	1,564 SPACES
PARKING PROVIDED		2,000 SPACES
THE PROPOSED PARKING MODIFICATIONS FOR BLDG X & Y ARE AS FOLLOWS:		
CURRENT PARKING ON OVERALL SITE		2006 SPACES
CURRENT PARKING ON EXISTING X & Y SITE		215 SPACES
SPACES PROVIDED (BUILDING X & Y AREA MODIFIED)		106 SPACES
SPACES PROVIDED IN PLACE OF BUILDING R		89 SPACES
TOTAL SPACES PROVIDED ON OVERALL SITE		2,007 SPACES

NEW BUILDING AND SITE STATISTICS

OVERALL LOT AREA	±117,500 S.M.
LOT FRONTAGE	254M AT UPPER MIDDLE ROAD
OVERALL LOT COVERAGE	21.51 %
ESTABLISHED GRADE	SEE DRAWINGS
ABUTTING LAND USE	N/A
GARBAGE CONTAINMENT	INTERNAL TO BUILDINGS
EXISTING USE	E4 BUSINESS EMPLOYMENT (2014-014) T1 TRANSITION EMPLOYMENT (1984-63)
PROPOSED USE	SAME
LANDSCAPE AREA ADDED	±195 S.M. (HARDSCAPE)
LANDSCAPED AREA REQUIRED (OVERALL SITE)	10 %
LANDSCAPED AREA PROVIDED (OVERALL SITE)	18.9 %
LANDSCAPED AREA REQUIRED (FRONT YARD)	25 %
LANDSCAPED AREA PROVIDED (FRONT YARD)	25 %
NUMBER OF HANDICAPPED PARKING SPACES REQUIRED (1% OF TOTAL PARKING + 11 SPACES)	27 SPACES
NUMBER OF HANDICAPPED PARKING SPACES PROVIDED	53 SPACES
TOTAL NUMBER OF PARKING SPACES REQUIRED	1,564 SPACES
STANDARD PARKING RATIO OF 5.7 SPACES PER 100 S.M. (INCLUDING PATIOS) SHALL BE APPLIED TO THE ENTIRE SITE	
TOTAL PARKING PROVIDED	2,000 SPACES
BICYCLE PARKING SPACES REQUIRED (1/1000 S.M. OF NET FLOOR AREA)	25 SPACES
BICYCLE PARKING SPACES PROVIDED	25 SPACES

This drawing is an instrument of service, is provided by and is the property of Turner Fleischer Architects Inc. The contractor must verify and accept responsibility for all dimensions and conditions on site and must notify Turner Fleischer Architects Inc. of any variations from the supplied information. This drawing is not to be used for any other purpose without the prior written consent of Turner Fleischer Architects Inc. Information shown on this drawing, refer to the appropriate consultant's drawings before proceeding with the work. Construction must conform to all applicable codes and requirements of applicable having jurisdiction. The contractor working from drawings not specifically marked for construction must assume full responsibility and bear costs for any corrections or damages resulting from his work.

SIGN LEGEND

SYMBOL	SIGN	DESCRIPTION
A	STOP	"STOP" SIGN R-1 (600x600mm) WHITE REFL. LEGEND & BORDER, RED REFL. BACKGROUND
B	DISABLED PARKING	"DISABLED PARKING PERMIT" SIGN R-91 (300x450mm) RED REFL. INTERDICTIONARY SYMBOL, BLUE REFL. SYMBOL OF ACCESS & SYMBOL BORDER, BLACK SYMBOL, LEGEND & BORDER, WHITE REFL. BACKGROUND
C	FIRE ROUTE	"FIRE ROUTE" SIGN R-10 (300x450mm) RED REFL. INTERDICTIONARY SYMBOL, BLACK SYMBOL, WHITE REFL. "FIRE ROUTE" ON BLACK BACKGROUND, BLACK LEGEND & BORDER, WHITE REFL. BACKGROUND

PROJECT

OAKVILLE ENTERTAINMENT CENTRUM
OAKVILLE, ONTARIO

DRAWING

SPA SITE PLAN-BUILDING X&Y

PROJECT NO.	14.070
PROJECT DATE	2020-03-27
DRAWN BY	JHL
CHECKED BY	JJK
SCALE	As indicated
DRAWING NO.	A001