

**Stage 3 Archaeological Assessment of the McMichael Site
(AiGw-532) Part of Lot 34, Concession 1, NDS
Formerly in the Township of Trafalgar
Now in the Town of Oakville, Regional Municipality of Halton**

Prepared for:

BCIMC Realty Corporation
c/o Bentall Investment Management
55 University Ave., Suite 300
Toronto, Ontario M5J 2H7
Tel. 416-681-3421
Fax. 416-681-345

Culture Programs Unit
Ministry of Culture
400 University Ave., 4th Floor
Toronto, Ontario M7A 2R9
Tel. 416-314-7148
Fax. 416-314-7175

Archaeological Licence P128 (Hull)
MCL CIF P128-050-2009
ASI File 09TE-05

November 2009



Archaeological Services Inc.

528 Bathurst St.
Toronto, Ontario
Canada, M5S 2P9

T 416-966-1069
F 416-966-9723
info@IASI.to/www.IASI.to

**Stage 3 Archaeological Assessment of the McMichael Site (AiGw-532)
Part of Lot 34, Concession 1, NDS, Formerly in the Township of Trafalgar
Now in the Town of Oakville, Regional Municipality of Halton**

EXECUTIVE SUMMARY

Archaeological Services Inc. (ASI) was retained by BCIMC Realty Corporation c/o Bentall Investment Management of Toronto, Ontario to conduct a Stage 3 archaeological assessment of the McMichael site (AiGw-532), located within Lot 34, Concession 1 NDS, in the former township of Trafalgar South, now in the Town of Oakville, Regional Municipality of Halton. The Stage 3 assessment was completed in July 2009 under the project direction of Katherine Hull (MCL CIF P128-050-2009) and the field direction of Aleks Pradzynski (R190) and Wes Oldham (R292).

The Stage 3 archaeological assessment of the McMichael site (AiGw-532) began with a controlled surface collection, resulting in the collection of 69 artifacts that were distributed widely in a clustered, arcing band adjacent to an unploughed yard containing demolished farm structures and concrete and gravel surfaces. Following the CSC, 26 one-metre square units were excavated to sterile subsoil in the plough zone to determine the nature and extent of cultural deposits as well as to evaluate the site's heritage value. This resulted in the collection of 618 historical and two Aboriginal lithic artifacts. This activity identified an intrusive soil layer, "Layer A," that overlay a buried plough zone, "Layer B," in the northern portion of the site. The southern portion appeared to retain an undisturbed soil profile, however, plough zone depths widely varied and the artifact assemblage included both pre- and post-1900s items. Artifact yields per unit were relatively low, with high yield spikes mixed into the distribution. There is no site core with a high yield buffered by gradually decreasing yields that define the site boundaries, which is the pattern one would expect on a site with good integrity.

Together, the analysis of the archival and archaeological data suggests that the McMichael site (AiGw-532) was formed through the redistribution of artifacts pushed into the existing field, either during the process of levelling ground to construct the now-demolished farm outbuildings, or to aid in the drainage of the existing field, and/or during the demolition of the structures in the farm yard. The farm yard may overlap with the former location of an early-to-mid nineteenth-century domestic structure, and this redevelopment has compromised the integrity of the archaeological deposits. It is concluded that the McMichael site is not a significant heritage resource and there is no further archaeological concern.



**ARCHAEOLOGICAL SERVICES INC.
PLANNING DIVISION**

PROJECT PERSONNEL

<i>Project Manager:</i>	Eva MacDonald, MSc , Senior Archaeologist
<i>Project Director:</i>	Katherine Hull, PhD (P128), Staff Archaeologist
<i>Project Archaeologists:</i>	Aleks Pradzynski BA Hons (R190), Staff Archaeologist Wesley Oldham, BA Hons. (R292), Staff Archaeologist
<i>Field Archaeologists:</i>	Johanna Kelly, MA Liz Matwey, BA Hons Alex Graham-Heggie, BA Rob Wojtowicz, BSc, Staff Archaeologist Amy Fox, BA Alisha Mohammed, BA Eva MacDonald
<i>Laboratory Processing:</i>	Steven Landry, BA Hons, (R322) Elaine Cheng, BA Hons (R318) Kayla Reynolds, BA
<i>Artifact Inventory:</i>	Alexis J. Hutcheson, MSc, Acting Manager Lab Services
<i>Archival Research:</i>	Colin McFarquhar, PhD, Project Historian
<i>Report Preparation:</i>	Katherine Hull
<i>Report Graphics:</i>	Sarina Finlay, BA, GIS-AS Katherine Hull
<i>Report Reviewer:</i>	Eva MacDonald



TABLE OF CONTENTS

EXECUTIVE SUMMARY	I
PROJECT PERSONNEL	II
TABLE OF CONTENTS	III
1.0 INTRODUCTION	1
2.0 PROJECT BACKGROUND	2
2.1 PREVIOUS ARCHAEOLOGICAL RESEARCH	2
2.2 RESEARCH METHODOLOGY	2
3.0 LAND USE HISTORY	4
4.0 HISTORIC ARTIFACT ANALYSIS	7
4.1 KITCHEN/FOOD-RELATED CLASS	7
4.1.1 <i>Ceramics</i>	7
4.1.2 <i>Beverage Storage</i>	10
4.2 ARCHITECTURAL CLASS.....	10
4.3 PERSONAL CLASS	10
4.3.1 <i>Smoking Pipes</i>	10
4.4 TOOLS AND EQUIPMENT CLASS	10
4.4.1 <i>Agricultural</i>	10
4.4.2 <i>Hardware and Miscellaneous</i>	10
4.5 ORGANIC CLASS.....	11
5.0 ABORIGINAL ARTIFACTS	11
6.0 DISCUSSION	11
7.0 RECOMMENDATIONS	15
8.0 REFERENCES CITED	16
9.0 PHOTOGRAPHIC PLATES	17

LIST OF TABLES

Table 1: Number of Artifacts Per Layer, McMichael Site (AiGw-532).....	4
Table 2: McMichael Site (AiGw-532) Historic Artifact Totals by Functional Class and Provenience	8
Table 3: Retained Artifacts Per Layer, McMichael Site (Northern Section)	12
Table 4: Early and Modern Artifacts Per Soil Layer, McMichael Site (Northern Section).....	13
Table 5: Early and Modern Artifacts Per Unit, McMichael Site (Southern Section).....	14



LIST OF FIGURES

Figure 1: The location of the McMichael site (AiGw-532). 1
Figure 2: Stage 3 Assessment of the McMichael site (AiGw-532)..... 3
Figure 3: The south wall profile of unit 527N-175E demonstrating the two distinct topsoil deposits. 5

LIST OF PLATES

Plate 1: The excavation of Stage 3 test units at the McMichael site.17
Plate 2: East wall profile of unit 530N-180E, demonstrating the two distinct topsoil layers.17
Plate 3: East wall profile of unit 530N-188E demonstrating the two distinct topsoil layers.17
Plate 4: Yellowware sherds..17
Plate 5: Redware and stoneware sherds.....17
Plate 6: A sample of the decorative types present in the McMichael ceramic assemblage. 18
Plate 7: A selection of transfer-printed RWE..... 18
Plate 8: A few of the white ball clay smoking pipe fragments from the McMichael collection. 18

APPENDICES

APPENDIX A: McMichael Site (AiGw-532) Artifact Inventory—Ceramics
APPENDIX B: McMichael Site (AiGw-532) Artifact Inventory—Non-ceramics



1.0 INTRODUCTION

Archaeological Services Inc. was retained by BCIMC Realty Corporation c/o Bentall Investment Management to conduct a Stage 3 archaeological assessment of the historic McMichael (AiGw-532) site, located within Lot 34, Concession 1, NDS, in the former township of Trafalgar South, now the Town of Oakville, Regional Municipality of Halton. This Euro-Canadian site is located in an agricultural field just north of Dundas Street West and measures 0.2 hectares (0.5 acres).

The project was conducted under the project management of Ms. Eva MacDonald and the project direction of Katherine Hull under archaeological license P128 (P128-050-2009) pursuant to the Ontario Heritage Act (RSO 2005). Aleks Pradzynski (R190) and Wes Oldham (R292) served as the field directors.

Bentall Investment Management granted Archaeological Services Inc. permission to access the subject property and to carry out the activities necessary for the completion of the Stage 3 assessment.

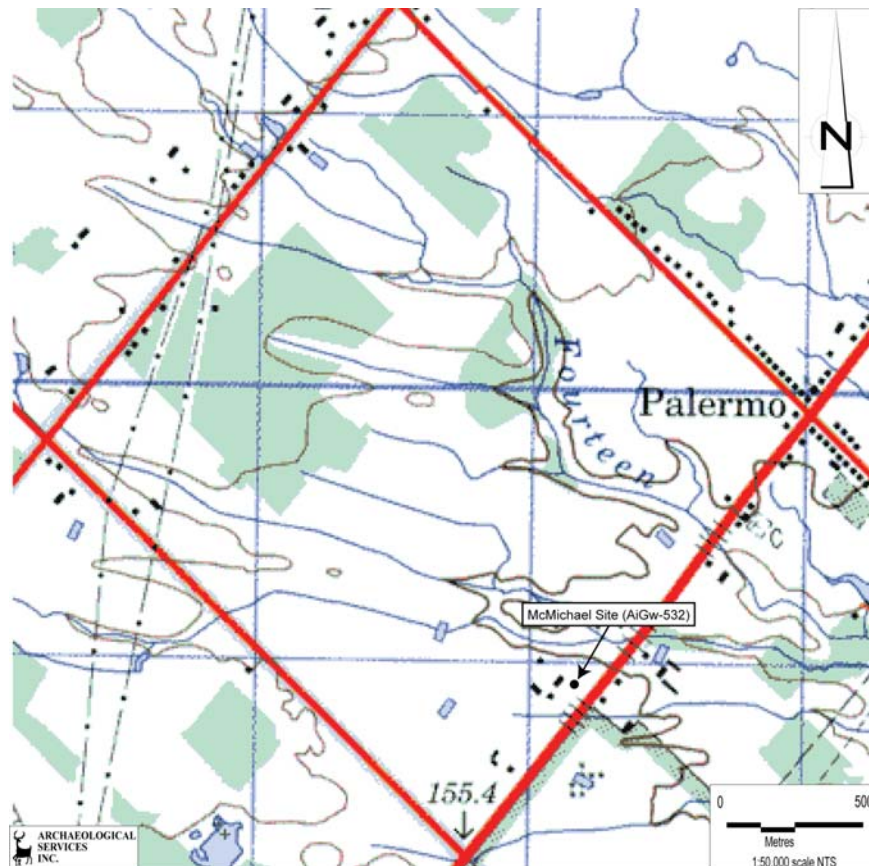


Figure 1: Location of the McMichael Site (AiGw-532).

NTS Hamilton-Burlington Sheet, 30M/5 Edition 10, 1999.



2.0 PROJECT BACKGROUND

2.1 Previous Archaeological Research

The McMichael site was discovered in 2008 by Archaeological Services Inc. subsequent to a pedestrian survey of agricultural land on Lots 33 and 34, Concession 1, NDS, in the Geographic Township of Trafalgar, now in the City of Oakville. It was characterized as a diffuse scatter of material that extended over an entire field (ASI 2009:20). A representative sample of 45 artifacts was collected. The Stage 2 artifact assemblage contained a variety of nineteenth-century ceramics, ranging from pearlware to ironstone, window and container glass, machine cut nails, as well as twentieth-century material such as a wire nail and porcelain fragments. Overall the assemblage was characteristic of a domestic occupation.

Given the potential early nineteenth-century component at the McMichael site (AiGw-532), a Stage 3 assessment was recommended to clarify the nature and extent of cultural deposits in the plough zone (ASI 2009).

2.2 Research Methodology

The Stage 3 archaeological assessment of the McMichael (AiGw-532) site was initiated under the project direction of Dr. Katherine Hull (P128) and field direction of Aleks Pradzynski (R190) on May 22 2009 under clear and pleasant skies. It commenced with the establishment of a datum (500N-200E) near the centre of the site, followed by a controlled surface collection at one-metre intervals. This resulted in the collection of 69 artifacts over a widely distributed area (Figure 2). The datum stake was then tied to a five-metre square recording grid and a single one-metre square test unit (500N-185E) was excavated on this date.

A crew returned to the site on July 2 under the direction of Wes Oldham (R292) and began the excavation of an additional 27 one-metre square test units over an eight day period (Plate 1). The units were strategically placed to sample both the core and the periphery of the site as determined by the distribution of artifacts in the Stage 3 surface collection. Twenty-five units were completed to sterile subsoil in the plough zone and two units on the western edge in the unploughed field could not be completed because they exhibited disturbed soil profiles.

The Stage 3 assessment resulted in the recovery of 618 historical artifacts, including ceramic sherds, faunal bone, smoking pipe fragments, window and container glass, and nails characteristic of a domestic nineteenth-century site as well as modern artifacts, such as plastic. Artifact yields ranged between 0 in disturbed unit 480N-180E and 86 artifacts in unit 530N-180E (Figure 2). Two Aboriginal items were also recovered. All soil fills were screened through 6 mm wire mesh to facilitate artifact recovery. The subsoil was trowelled and all profiles were examined for undisturbed cultural deposits.



Three distinct types of soil deposits were identified. The Stage 2 assessment had characterized the unploughed area to the west of the site as having no archaeological potential due to the demolition of farm buildings (ASI 2009:9). This western limit was confirmed as two units (480N-180E and 490N-180E) contained gravel and demolition debris. Eighteen units demonstrated a homogeneous plough zone “Layer B” ranging in depth from 23 cm in units 500N-180E and 505N-185E to 62 cm in unit 535N-175E.

Eight units contained two distinct soil layers. The bottommost layer, designated Layer B, is identified as the original plough zone layer. The thickness of this layer ranges between 22 cm in 527N-175E and 37 cm in 515N-180E. Layer B is described as a very dark greyish brown (10YR3/2) clay lightly mottled with yellowish brown (10YR5/6) clay in units 515N-180E, 525N-180E, 530N-180E (Plate 2) and 533N-183E. In units 527N-175E (Figure 3) and 530N-188E, Layer B is described as a homogeneous dark greyish brown (10YR4/2) clay. Layer A is located directly above Layer B and ranges in thickness from 27 cm in unit 515N-180E and 60 cm in unit 533N-183E. In the majority of these units, the Layer A soil is an equal mix of dark greyish brown (10YR4/2) loamy clay and yellowish brown (10YR5/4) clay. The layer in unit 527N-175E also contained approximately 20% gravel. Layer A in unit 530N-188E (Plate 3) is described as brown (10YR4/3) loamy clay mottled with yellowish brown (10YR5/4) clay.

In the majority of cases in which two soil layers are defined, excavators removed the soils stratigraphically and recorded all collected artifacts by provenience (with units 520N-180E and 520N-190E being the exception). In the cases where the layer information was recorded, artifact yields were clearly higher in the topmost layer, Layer A (Table 1). In fact, Layer A contains nearly 20 times more artifacts than the deeper Layer B. As mentioned previously, it is hypothesized that Layer B represents the original plough zone. Layer A, in contrast, is an imported soil layer that represents an attempt to alter the level of the field or other characteristics of the landscape.

Table 1: Number of Artifacts Per Layer, McMichael Site (AiGw-532)

Unit	Layer A Yield	Layer B Yield	Total Artifacts
515N-180E	18	0	18
525N-180E	33	2	35
527N-175E	13	3	16
530N-180E	84	2	86
530N-188E	5	1	6
533N-183E	30	2	32
TOTAL	183	10	193

In total, the Stage 3 archaeological assessment resulted in the collection of 618 historic and two Aboriginal artifacts. It should also be noted that modern material (such as plastic) was identified but not retained. As well, only a sample of modern red brick fragments were retained.

3.0 LAND USE HISTORY

Settlement commenced in Trafalgar Township around 1807. By 1817 the township had a population of 548 and contained one grist mill and four saw mills. The population reached 4,513 by 1850 and, according to the census, had jumped to 5,027 in 1871. This 1871 total did not include the towns of Oakville and Milton which had been separate since 1850 (*Illustrated Historical Atlas of the County of Halton* 1877:59).



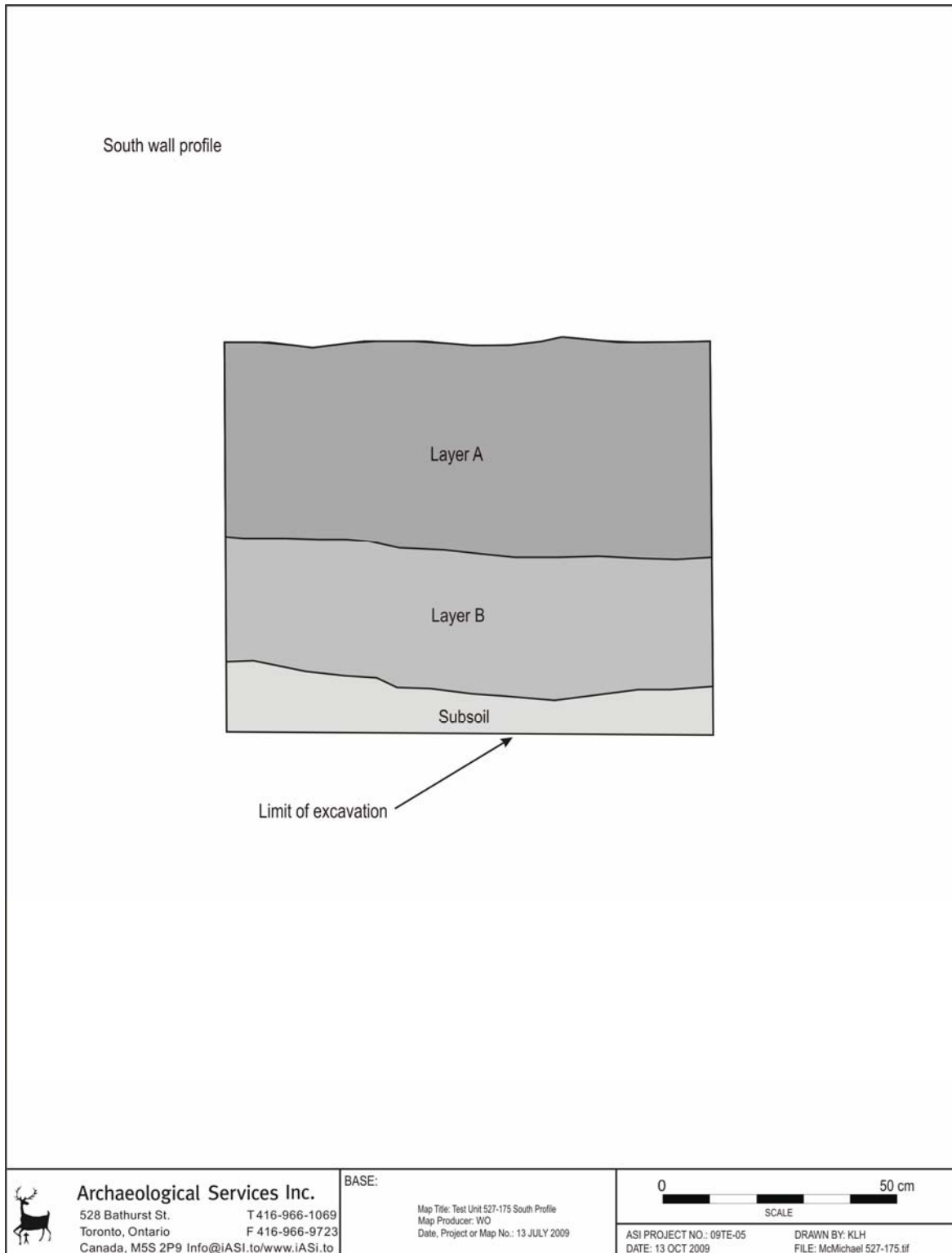


Figure 3: The south wall profile of unit 527N-175E demonstrating the two distinct topsoil deposits.

A search of material at the Ontario Archives has revealed the following information regarding the development of Lot 34, Concession 1, NDS. According to the *Abstract Index to Deed Titles* the Crown Patent for Lot 34 was granted to James McBride in 1808. The patent was for all 200 acres. McBride is listed as a landowner in 1817 and, in 1818, he purchased a small parcel of land (with two other church elders) to serve as the site for the Palermo Episcopal Methodist church and cemetery (Town of Oakville 2009).

James McBride willed the lot to his son Archibald in 1836. Archibald McBride then willed the lot to his sisters Jane McMichael and Mary McBride in 1849. In 1878, Mary McLaren, the “wife of James McLaren, formerly Mary McBride daughter of James McBride deceased” quit claimed the lot to Archibald McMichael, James McBride McMichael, Mary Amanda McMichael (spinster) and Colin Campbell McMichael. These individuals were the children of Jane McMichael nee McBride, Mary’s sister. In 1884, James McBride McMichael appears to have relinquished his claim as a probate of will grants the land to Archibald McMichael, Mary Amanda McMichael, and Colin Campbell McMichael “in equal shares or [to] share and share alike” [AO, Abstract Index to Deed Titles, Trafalgar Township, reel GSU 179049].

The agricultural portion of the 1851 census is missing, but David McMichael is enumerated in the personal census. He was a 26 year old American-born farmer who lived with his wife Jane, son Archibald, and 64 year old Jane Harriet McBride. The family lived in a one and a half story frame dwelling [AO, Microfilm of 1851 Census Rolls, Trafalgar Township, reel C-11726]. David McMichael was also listed in the 1861 census. He was a 48 year old American-born farmer who lived with his wife Jane and their five children. The family possessed 200 acres, of which 100 were cultivated. The farm’s crops included wheat, barley, rye, peas, oats, buckwheat, and potatoes, and the livestock included cows, sheep, and pigs. The family lived in a one and a half storey frame dwelling that was built in 1830 [AO, Microfilm of 1861 Census Rolls, Trafalgar Township, reel C-1031].

Although little genealogical information is available regarding James McBride, some does exist for David McMichael. According to family records, David McMichael (with his twin brother, Jacob) was born 2 September 1813, the sixth (and seventh) children of James (originally from Ayrshire, Scotland) and Rosanna McMichael (nee DeMott). James’s first visit to Canada was in 1797 as a visitor from Pennsylvania. He later returned to Canada and purchased 400 acres in the Township of Townsend, Norfolk County, Ontario. He then went home again to Pennsylvania, married, and fathered ten children. The family immigrated to Ontario (permanently this time) in 1820. Two years later, James died. David McMichael married Jane McBride (1827-1865) on 15 October 1845 and the couple resided at Palermo, near Hamilton, Ontario (<http://www.duprel.com/demdes2.htm>; Owen 1898:222).

David McMichael was again listed in the 1871 census. He was a 57 year old American-born farmer. He was a widower (Jane died in 1865) who lived with his four children and one housekeeper. The family possessed 200 acres, of which 125 were improved. The farm’s crops included wheat, barley, oats, peas, hay, and apples, and the livestock included horses, cows, sheep, and pigs. The family owned five dwelling houses [AO, Microfilm of 1871 Census Rolls, Trafalgar Township, reel C-9955]. The 1901 census again enumerated only one family for Lot 34. Joseph Grice was a 35 year old English born farmer who lived with his wife and one child. They rented 200 acres, and resided in a ten room rented house [AO, Microfilm of 1901 Census Rolls, Trafalgar Township, reel T-6471].

A number of assessments exist for Trafalgar Township. James McBride was listed for Lot 34 in the 1825 assessment. There were eight people in the household. The family possessed 200 acres, of which 60 were cultivated, but no dwelling house was listed. McBride was again listed in the 1827 assessment. His property was still 200 acres, but the family now lived in a framed house under two stories with one



additional fireplace. In 1840, Archibald McBride lived on 200 acres, of which 70 were cultivated. He lived in a frame house under two stories with one additional fireplace [AO, Microfilm of Assessment Rolls, Trafalgar Township, reel MS 52/1]. The 1847, 1858, and 1867 assessments show David McMichael residing on all 200 acres of Lot 34 [AO, Microfilm of Assessment Rolls, Trafalgar Township, reels MS 52/2, MS 52/3, MS 52/4]. David and Archibald McMichael were joint possessors according to the 1877 assessment [AO, Microfilm of Assessment Rolls, Trafalgar Township, reel MS 52/5]. By this point in time, the 1877 *Historical Atlas of Halton* illustrated the farmhouse on Lot 34 in the location of the existing house on Lot 34, which is on a parcel of land west of the McMichael site, and which is severed from the property subject to the Stage 2 assessment.

The 1884 assessment noted D. McMichael as the freeholder and Albert Blake as the tenant [AO, Microfilm of Assessment Rolls, Trafalgar Township, reel MS 52/6]. The 1889 assessment listed Colin McMichael and Amanda McMichael as joint freeholders and Rick Grice as the tenant [AO, Microfilm of Assessment Rolls, Trafalgar Township, reel MS 52/7]. The 1897 assessment listed Colin McMichael of Montreal and Amanda McMichael of Waterdown as the freeholders and Joseph Grice, a 32 year old farmer, and William Francis, a 21 year old labourer, as the tenants [AO, Microfilm of Assessment Rolls, Trafalgar Township, reel MS 52/8].

It would appear that the McBride/McMichael family owned this lot throughout the entire nineteenth century. According to the census and assessments, they occupied a one and a half storey frame building that was built either in the late 1820s or early 1830s. By the mid-1870s, this home had been replaced and was occupied by tenants during the last quarter of the nineteenth century (David died in 1885).

4.0 HISTORIC ARTIFACT ANALYSIS

A total of 618 historical artifacts and two Aboriginal lithics (Table 2; Appendices A, B) was recovered during the Stage 3 archaeological assessment of the McMichael site (AiGw-532). For the purposes of analysis, the levelling fill “Layer A” has been discussed separately. A modified “Classification System for Historical Collections” (Canadian Parks Service 1992) was used to organize the data.

4.1 Kitchen/Food-Related Class

Layer B from the McMichael site contains 136 Kitchen/Food-related artifacts, comprising 31.3% of the layer. These artifacts are related to the storage, preparation, distribution and consumption of food and beverages. Layer A contains 52 artifacts in this class.

4.1.1 Ceramics

Discerning the ware types within an assemblage is useful to archaeologists as a relative dating technique because of the historical progression of types in industrial-era ceramic production. Creamware was first produced by Wedgwood in 1762 and marketed under the name ‘Queen’s Ware,’ which made it attractive as a status ware (Mullins 1998:25). The popularity of creamware waned as a subsequent ware type was introduced but due to the area’s distance from the manufacturing center of Staffordshire, creamware remained prevalent in Ontario until *circa* 1830 (Kenyon 1980).



Table 2: McMichael Site (AiGw-532) Historic Artifact Totals by Functional Class and Provenience

Artifact Class	CSC	Topsoil Units	Class Totals	Class Total as % of Site
<i>Architectural</i>	6	165	171	27.7
Brick	0	2	2	
Nail, hand wrought	0	2	2	
Nail, machine cut	4	52	56	
Nail, wire	0	20	20	
Nail, indeterminate	1	17	18	
Window glass	1	72	73	
<i>Personal</i>	0	7	7	1.1
Smoking pipe	0	7	7	
<i>Tools and Equipment</i>	1		35	5.7
Agricultural	0	15	15	
Hardware	1	18	19	
Miscellaneous	0	1	1	
<i>Organic</i>	1	37	38	6.1
Avian	0	2	2	
Mammalian	1	34	35	
Shell	0	1	1	
<i>Kitchen/Food-related</i>	54	134	188	30.4
Container, liquor	0	2	2	
Container, soft drink	0	3	3	
Kitchenware	3	36	39	
Tableware	46	82	128	
Teaware	5	7	12	
Unidentified	0	4	4	
<i>Indeterminate</i>	7	172	179	29.0
Container, unidentified	5	98	103	
Unidentified	2	74	76	
<i>Historic Artifact Totals</i>	69	549	618	100.0

Pearlware was introduced by Wedgwood in 1779 as an alternative to creamware (Majewski and O'Brien 1987:118). The popularity of pearlware was greatest during the turn of the nineteenth century and continued, in Ontario, until the mid-1830s (Kenyon 1980). Introduced in the 1830s, refined white earthenware (or whiteware) represented a change in glaze composition, from a lead-based to a lead-free glaze (Kenyon 1980; Mullins 1998:31).

First appearing in merchants' records in 1847, ironstone (also known as white granite) became extremely popular, reaching its height in the 1880s. The wheat pattern, characterized by distinctive wheat images moulded on the body of the vessel, became popular in the 1860s and was available through the remainder of the century. By the 1890s, white granite had become a bargain ware available in limited forms while the new vogue ceramic ware, semi-porcelain, was available with numerous decorative treatments in stores and via catalogues (Kenyon 1995). The identification and relative abundance of each of these ware types within an assemblage provides clues as to the occupation date of an archaeological site. No unique vessels were identified in the McMichael collection due, in part, to the highly fragmentary nature of these topsoil finds, so the following will discuss sherd frequencies.

Layer B contains 132 sherds of the Kitchen/Food-related ceramic assemblage. The collection contains refined ceramic types with manufacture dates between the 1800s to the late-nineteenth century. The earliest datable ceramic ware type present is pearlware, comprising a small fraction of the sample (n=15).



Mid-century ceramic ware types are most strongly represented; the ceramic collection contains a large sample of refined white earthenware (n=71) and a smaller sample of yellowware (n=5, popular from the 1840s onward; Plate 4). Later ceramic types are less prevalent. For example, ironstone comprises 13 sherds while semi-porcelain is unrepresented. Other, less datable ceramic ware types include bone china (n=4), Jackfield (n=1) and refined redware (n=1).

Coarse and stoneware ceramics are also common in Layer B (Plate 5). Coarse red earthenware is most prevalent among the coarse wares, comprising 20 sherds in the collection. The assemblage also contains a small amount of buff earthenware (n=1) and stoneware (n=1). Unfortunately, coarse red earthenware is difficult to date due to the relative stability of its overall morphological characteristics and the limited amount of published research on the topic. Coarse red earthenware, also known as redware, is a heavy, thickly potted ceramic type. Redware receives its name from the reddish colour of the clay after firing. In addition, it is porous and must be glazed (often seen on the interior only) in order to prevent leakage. This type of redware was relatively fragile and would break if exposed to extreme heat. Therefore, redware items were almost exclusively food preparation and storage items. It was usually produced from local clay at local potteries (Webster 1969), in contrast to the refined white earthenware and ironstone vessels which for the majority of this time period were imported into, rather than manufactured inside, Canada (Kenyon 1980). The local Ontario manufacturing of redware began as early as the late 1820s as German-speaking potters immigrated into the areas of Waterloo County and the Niagara Peninsula (Newlands 1979:22).

As ceramic ware types changed through time, so did ceramic decorative styles. And as these were much quicker to change (based on the popular style of the day), the types of decorative treatments present in a ceramic assemblage offer a finer focus when assessing occupation dates of an archaeological site. An analysis of the styles present suggests that the occupation of the site occurred between the 1800s and the 1870s. This is congruent with the occupation history of the site associated with the McBride/McMichael families.

The earliest decorative styles present in Layer B are hand-painted sherds in the early polychromatic palette (n=2) and the blue monochromatic palette (n=1), as well as scalloped blue edgeware (n=4; Plate 6) and Olde Blue transfer print. Mid-century styles are most strongly represented in the collection. These decorative treatments include transfer-printed scenes in blue (n=18), black (n=1), brown (n=1), and purple (n=1; Plate 7), hand-painted sherds in the late polychromatic palette (n=5; Plate 6), sponged wares (n=2; Plate 6), straight (n=1) edgeware, and flowing transfer prints in mulberry (n=3). Later decorative types in the assemblage include Rockingham-style glazed (n=2; Plate 4) and moulded wares (n=6).

Layer A also contains early-to-mid nineteenth century ceramics and a small amount of ironstone. Similar trends are seen in Layer A as mid-century styles are most strongly represented in the collection. These decorative treatments include transfer-printed scenes in blue (n=5), black (n=2), brown (n=1), and purple (n=8; Plate 7), sponged wares (n=1; Plate 6), and chicken claw edgeware (n=2; Plate 6).

In summary, an analysis of the McMichael ceramic assemblage reflects an occupation date of *circa* 1800-1880, with the most intense occupation occurring after the 1830s.



4.1.2 Beverage Storage

All of the artifacts pertaining to the storage of beverages were recovered from Layer A: one colourless glass, oval-shaped basal fragment embossed "ALBERTA DISTILLERS" (Cat.#285); one amber glass crown finish fragment (Cat.#391); one fragment of a colourless glass Coca-Cola bottle (Cat.#221); one fragment of a colourless glass Pepsi Cola bottle (Cat.#248); and one aluminum pull tab from a can of soda or beer (Cat.#290). All items date to the late nineteenth and early twentieth centuries.

4.2 Architectural Class

Artifacts from the architectural class comprise 29.9% (n=130) of the total Layer B assemblage. Nails are the most common items in Layer B and include 42 machine-cut nails. The remaining nails are wire nails (n=16; manufactured after 1900) and 11 nails of indeterminate manufacture. Additional items in the class include brick fragments (n=2), and window glass (n=59).

The only two hand-wrought nails were found in Layer A. Hand-wrought nails were prevalent until the 1830s, when technological advancements made the machine-cut nail possible (Wells 1998).

4.3 Personal Class

4.3.1 Smoking Pipes

Layer B contained five white ball clay smoking pipe fragments (Plate 8), including at least one identifiable marked pipe stem: a partial mark likely belonging to Henderson, Montreal (1847-1876; Cat.#115; Bradley 2000:117).

Layer A contained two fragments, including one partial Bannerman of Montreal stem (1888-1907; Cat.#315).

4.4 Tools and Equipment Class

Layer B contained 22 items belonging to the Tools and Equipment Class, while Layer A contained 13 items.

4.4.1 Agricultural

The assemblage contains 15 fragments of modern terracotta drainage tile, 12 in layer B and three in Layer A.

4.4.2 Hardware and Miscellaneous

Layer B contained three staples, one screw, one spike, one washer, one piece of ring gear, and 10 fragments of ferrous wire.



4.5 Organic Class

Layer B of the assemblage contains 21 fragments of mammal bone, and two pieces of avian bone; Layer A contains 14 fragments of mammal bone and one piece of shell. No further zoological analysis was completed because the remains were recovered from the plough zone and, therefore, highly fragmentary.

5.0 ABORIGINAL ARTIFACTS

The McMichael assemblage contains two Aboriginal chert items: one shatter fragment of Onondaga chert (Cat.#131) and one thermally-altered secondary knapping flake of Onondaga chert, (Cat.#399). Both were found in Layer B.

6.0 DISCUSSION

Archival research regarding Lot 34, Concession 1, NDS indicates that the Crown patent for all 200 acres was granted to James McBride in 1808. McBride was assessed for the land in 1825 and eight people were recorded in his household, although no dwelling was recorded. By 1827, the family was living in a frame house under two stories with one additional fireplace. McBride willed the lot to his son Archibald in 1836 and the 1840 assessment recorded the son living in the same house. The assessment of 1847 recorded David McMichael as possessing the land. Archibald willed the lot to his sisters Jane McMichael (wife of David) and Mary McBride in 1849. The family of David and Jane McMichael is recorded as living on the parcel in the 1851 census. They occupied a one and a half storey frame dwelling that was built in 1830 (likely the frame house recorded in the 1827 assessment). The 1858 and 1867 assessments also recorded the David McMichael family as possessing the lot. By the 1871 census, Jane McMichael had died, leaving David, his four children and one housekeeper on the parcel; the family owned five dwelling houses. The 1877 assessment noted that David and Archibald McMichael (David's son) were joint possessors of the parcel and, by 1884, a tenant (Albert Blake) worked the land. The tenancy of the parcel continued throughout the remainder of the century, and the tenants resided in a new house that had been constructed on Lot 34 by 1877. This house was illustrated west of the McMichael site on the *Historical Atlas of Halton County*.

The Stage 3 archaeological assessment of the McMichael site (AiGw-532) began with a controlled surface collection. The artifacts were widely distributed in a broad arc that clustered adjacent to the unploughed field containing the remains of a demolished pig barn and an empty underground pig manure storage unit. This was followed by the systematic excavation of 28 one-metre test units within a recording grid. These units were excavated to subsoil where possible to determine the nature and extent of cultural deposits, and the subsoil was examined for cultural features. No such features were identified. Two distinct soil layers were noted, however, in eight units in the north half of the site, six of which were excavated stratigraphically.

In total, the Stage 3 archaeological assessment of the McMichael site (AiGw-532) resulted in the recovery of 618 historic artifacts, consisting of a variety of coarse and refined earthenware ceramics, container and window glass, metal nails, personal items, hardware and organic remains ranging in date from the early 1800s until the modern era. In addition, two Aboriginal items were found.



When determining if the McMichael site is of high heritage value, the origins of each soil layer as well as the artifacts each contains must be reviewed. Therefore, the analyst must first examine the nature and origin of soil Layers A and B. The field archaeologists observed the presence of two distinct soil layers on the north portion of the site. They suggested that Layer A was imported to level the ground surface, as the modern field is level. Because Layer A is only present within the northern 20 metres of the site, the entire site’s significance cannot be based simply on the presence of two soil layers. It is necessary to examine the site in two sections: the northern section (from the 515N gridline northwards) and the southern section (south of the 515N gridline; see Figure 2).

The first step in the analysis is to review the number and types of artifacts recovered from each soil layer in the northern section of the site (Tables 3, 4). It should be noted that for purposes of this analysis, undecorated refined white earthenware, all yellowware ceramics and unmarked smoking pipe fragments were excluded from the nineteenth-century artifacts as their manufacture continued into the twentieth century.

Table 3 demonstrates that only 3.6 % of artifacts (whose provenience included a reference to layer) from the northern section are found in Layer B. Layer A is clearly more artifact-rich and, in one unit, contained all the artifacts retained from the unit. The original topsoil layer—Layer B—contains only a very small portion of the cultural material from the site. This suggests that, at least in this area of the site, the cultural material is not associated with the McMichael site and does not warrant additional archaeological investigation.

Table 3: Artifacts Per Layer, McMichael Site (Northern Section)

Test Unit	Layer A (# and %)	Layer B (# and %)	Artifact Total (including n/a units)
515N-180E	18 (100.0)	0 (0.0)	18
520N-180E	n/a	n/a	39
520N-190E	n/a	n/a	7
525N-180E	33 (94.3)	2 (5.7)	35
527N-175E	13 (81.3)	3 (18.8)	16
530N-180E	84 (97.7)	2 (2.3)	86
530N-188E	5 (83.3)	1 (16.7)	6
533N-183E	30 (93.8)	2 (6.3)	32
TOTAL	183+	10	267

The analysis of the types of artifacts (early versus modern) in each northern unit (Table 4) demonstrates that while both layers contain modern artifacts, not a single clearly pre-modern artifact was recovered from Layer B. Layer A, also contains a variety of architectural and kitchen/food items consistent with a nineteenth-century domestic occupation, suggesting the soil was taken from a midden of undetermined location.

In particular, the only hand wrought nails recovered during excavation were contained in the levelling fill “Layer A” imported to the site, suggesting that the original log cabin stood elsewhere and not at the location of the McMichael site.



Table 4: Early and Modern Artifacts Per Soil Layer, McMichael Site (Northern Section)

Test Unit	Layer	19 th C. Artifacts	Modern artifacts (post-1900)
515N-180E	A	Machine-cut nail	Soft drink glass, wire nail, drainage tile, plastic, modern brick
	B	No artifacts	No artifacts
520N-174E	PZ	<i>No clearly early artifacts</i>	Container glass, brick
520N-180E	Artifacts not excavated by provenience	Scalloped edgeware, spongeware; purple transfer print	Drainage tile, wire nail, container glass, aluminum pull-tab
520N-190E	Artifacts not excavated by provenience	<i>No clearly early artifacts</i>	Amber container glass, wire nail
525N-180E	A	Straight edgeware; blue and brown transfer print	Amber container glass, wire nail, plastic, brick, asphalt
	B	<i>No clearly early artifacts</i>	Drainage tile, wire nail
527N-175E	A	Machine-cut nail; blue transfer print	Wire nail, can, plastic, modern brick
	B	<i>No clearly early artifacts</i>	Modern brick, drainage tile
530N-171E	PZ	Machine-cut nail	<i>No clearly modern artifacts</i>
530N-180E	A	Pearlware; ironstone; blue, brown, black and purple transfer print	Plastic, modern brick
	B	<i>No clearly early artifacts</i>	Wire nail
530N-188E	A	<i>No clearly early artifacts</i>	Plastic
	B	<i>No clearly early artifacts</i>	Plastic
533N-183E	A	Hand-wrought and machine-cut nails; chicken-claw edgeware; spongeware	Amber container glass, plastic, modern brick
	B	<i>No clearly early historic artifacts; (lithic)</i>	Wire nail, modern brick, plastic
535N-175E	PZ	<i>No clearly early artifacts</i>	Drainage tile
540N-180E	PZ	<i>No clearly early artifacts</i>	Wire nail, container glass

**Modern artifacts include wire nails, modern drainage tile, recent container glass, plastic, etc., some of which were noted but not retained*
 PZ=ploughzone

Are the modern artifacts present in Layer B because of the soil-mixing associated with deep ploughing? The modern chisel plough is typically set to turn the soil to depths between 20 and 30 cm (8 to 12 inches; J. Hull, pers. com.). In most cases, Layer A is thicker than 30 cm (with the exception of unit 515N-180E), suggesting that Layer A and Layer B were not mixed by plough action (if indeed this area was subjected to routine ploughing). This is also supported by the clear difference in soil colour. Therefore, it is unlikely that the modern artifacts found in Layer B in this area are the result of plough disturbance. Consequently, it is reasonable to argue that Layer B was, at one time in the recent past, the only topsoil deposit present; Layer A is a later import. Unfortunately, the original source of Layer A is unknown. Layer A contains an amount of early artifacts sufficient to warrant additional excavation if the soil was an original deposit.

An analysis of the southern section (units south of the 515N gridline) indicates that these units contain a single layer of topsoil (designated simply “plough zone”) and a mix of pre- and post-1900s artifacts (Table 5). It is important to note, however, that artifact yields are low; only 286 artifacts were recovered from the complete excavation of 14 topsoil units in the undisturbed southern part of the site.



Table 5: Early and Modern Artifacts Per Unit, McMichael Site (Southern Section)

Test Unit	19th C. Artifacts	Modern artifacts (post-1900)
460N-170E	Machine-cut nail; ironstone	Amber container glass; drainage tile; wire nail
470N-180E	Ironstone	<i>No clearly modern artifacts</i>
480N-190E	<i>No clearly early artifacts</i>	<i>No clearly modern artifacts</i>
483N-199E	<i>No clearly early historic artifacts; (lithic)</i>	<i>No clearly modern artifacts</i>
490N-190E	Blue transfer print	<i>No clearly modern artifacts</i>
490N-200E	Dark green container glass	<i>No clearly modern artifacts</i>
495N-185E	Machine-cut nail; Henderson smoking pipe;	Amber and bright green container glass
500N-180E	Dark green glass; machine-cut nail	Amber glass; wire nail
500N-185E	Scalloped edgware, flowing transfer print; moulded ironstone; blue transfer print; machine-cut nail	Wire nail; amber container glass;
500N-190E	Pearlware; blue transfer print; machine-cut nail	<i>No clearly modern artifacts</i>
500N-201E	<i>No clearly early artifacts</i>	<i>No clearly modern artifacts</i>
505N-185E	Blue transfer print; ironstone; machine-cut nail	Amber container glass; drainage tile
510N-180E	Moulded ironstone; machine-cut nail	Coca-Cola bottle
510N-190E	Dark green container glass; machine-cut nail	Modern brick

Furthermore, the plough zone depths widely varied and artifact yields per unit were relatively low, with high yield spikes mixed into the distribution. There is no site core with a high yield buffered by gradually decreasing yields that define the site boundaries, which is the pattern one would expect on a site with good integrity.

In summary, the controlled surface collection and the complete excavation of 26 test units at the McMichael site (AiGw-532) resulted in the collection of 620 artifacts, ranging from two Aboriginal chert items to modern Coca-Cola bottle fragments. The site area encompasses two very different areas of soil and artifact deposition. The northern section, defined as north of the 515N gridline, contains two distinct soil layers. The topmost layer (Layer A) is a recently-imported layer and is not associated clearly with the McMichael site as its origin is undetermined. The bottommost layer (Layer B) contains few artifacts. In contrast, the southern section exhibits a single soil layer with range of artifacts.

Together, the analysis of the archival and archaeological data suggests that the McMichael site (AiGw-532) was formed through the redistribution of artifacts pushed into the existing field, either during the process of levelling ground to construct the now-demolished farm outbuildings, or to aid in the drainage of the existing field, and/or during the demolition of structures in the farm yard. The demolished farm yard may overlap with the former location of an early-to-mid nineteenth-century domestic structure, and this redevelopment has compromised the integrity of the archaeological deposits.



7.0 RECOMMENDATIONS

1. It is concluded that the McMichael site is not a significant heritage resource and there is no further archaeological concern.

The above recommendations are subject to Ministry approval and it is an offence to alter any archaeological site without Ministry of Culture (MCL) concurrence. No grading or other activities that may result in the destruction or disturbance of any archaeological sites are permitted until notice of MCL approval has been received.

The following conditions also apply:

- Should previously undocumented archaeological resources be discovered, they may be a new archaeological site and therefore subject to Section 48 (1) of the Ontario Heritage Act. The proponent or person discovering the archaeological resources must cease alteration of the site immediately and engage a licensed consultant archaeologist to carry out archaeological fieldwork, in compliance with sec. 48 (1) of the Ontario Heritage Act.
- The Cemeteries Act requires that any person discovering human remains must immediately notify the police or coroner and the Registrar of Cemeteries, Ministry of Small Business and Consumer Services.

The report is submitted to the Minister of Culture as a condition of licensing in accordance with Part VI of the Ontario Heritage Act, RSO 1990, c 0.18. The report is reviewed to ensure that the licensed consultant archaeologist has met the terms and conditions of their archaeological license, and that the archaeological fieldwork and report recommendations ensure the conservation, preservation and protection of the cultural heritage of Ontario.

The documentation related to this archaeological assessment will be curated by Archaeological Services Inc. until such a time that arrangements for their ultimate transfer to Her Majesty the Queen in right of Ontario, or other public institution, can be made to the satisfaction of the project owner(s), the Ontario Ministry of Culture, and any other legitimate interest groups.



8.0 REFERENCES CITED

- Archaeological Services, Inc. (ASI)
2009 Stage 1 and 2 Archaeological Assessment of 3269 Dundas Street West, Part of Lots 33 & 32, Concession 1, NDS, Formerly in the Township of Trafalgar South, Now in the Town of Oakville, Regional Municipality of Hamilton. Report on file, Ontario Ministry of Culture, Toronto.
- Bradley, Charles
2000 Smoking Pipes for the Archaeologist. In *Studies in Material Culture Research*, edited by K. Karklins, pp.104-133. Society for Historical Archaeology, California, Pennsylvania.
- Canadian Parks Service
1992 *Classification System for Historical Collections*. National Historic Sites, Canadian Parks
Illustrated Historical Atlas of the County of Halton
1877 Walker and Miles, Toronto.
- Kenyon, Ian
1980 Some General Notes on 19th Century Ceramics. *Kewa: Newsletter of the London Chapter of the Ontario Archaeological Society* (3).
1995 A History of Ceramic Tableware in Ontario: 1780-1910. Paper presented at Table Talks Lecture Series, Montgomery's Inn, Toronto.
- Majewski, T. and M. J. O'Brien
1987 The Use and Misuse of Nineteenth-Century English and American Ceramics. In *Archaeological Analysis. Advances in Archaeological Method and Theory, Volume II*, edited by M. B. Schiffer, pp. 97-209. Academic Press, New York.
- Mullins, Paul
1998 Ceramic Typology. Unpublished manuscript on file with author.
- Owen, E. A.
1898 *Pioneer Sketches of Long Point Settlement Or, Norfolk's Foundation Builders and Their Family Genealogies*. W. Briggs, Toronto.
- Newlands, David
1979 *Early Ontario Potters: Their Craft and Trade*. McGraw-Hill Ryerson, Toronto.
- Town of Oakville
2009 Palermo Cemetery. <http://www.oakville.ca/palermocemetery.htm>.
- Unknown Author
2009 Descendants of Michiel DeMott. <http://www.duprel.com/demdes2.htm>
- Webster, Donald
1969 *Early Slip-Decorated Pottery in Canada*. Charles J. Musson, Toronto.
- Wells, Tom
1998 Nail Chronology: The Use of Technologically Derived Features. *Historical Archaeology* 32(2): 79-99



9.0 PHOTOGRAPHIC PLATES



Plate 1: The excavation of Stage 3 test units at the McMichael site.



Plate 2: East wall profile of unit 530N-180E, demonstrating the two distinct topsoil layers.



Plate 3: East wall profile of unit 530N-188E demonstrating the two distinct topsoil layers.



Plate 4: Yellowware sherds. From left: Rockingham-glazed rim (Cat.#166); banded body sherd (Cat.#127); undecorated body sherd (Cat.#111).



Plate 5: Redware and stoneware sherds. From left: redware rim (Cat.#361); redware body sherds (Cat.#118, 138); stoneware rim (Cat.#363).



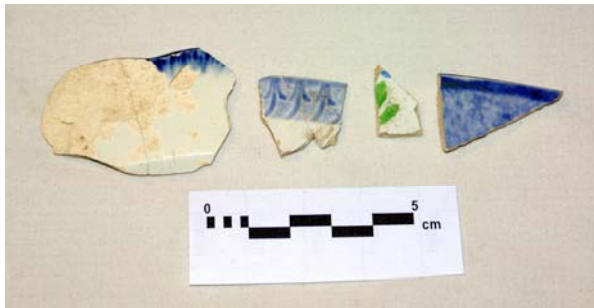


Plate 6: A sample of the decorative types present in the McMichael ceramic assemblage. From left: blue scalloped-edge pearlware (Cat.#273); chicken-claw edged ware (RWE; Cat.#380); late palette, hand painted RWE (Cat.#274); sponge-decorated RWE (Cat.#381).



Plate 7: A selection of transfer-printed RWE. From left: blue (Cat.#208); purple (Cat.#341); black (Cat.#340); brown (Cat.#339).



Plate 8: A few of the white ball clay smoking pipe fragments from the McMichael collection. From top: "Henderson, Montreal" marked pipe stem (Cat.#155); unmarked pipe stem (Cat.#187); shank/bowl juncture (Cat.#188).



APPENDIX A: McMichael Site (AiGW-532) Artifact Inventory—Ceramics

Ceramic Artifact Inventory

The McMichael Site (AiGw-532)

Cat#	Qty	Ware	Motif	Form	Comments
Unit: 533-183					
Feature:					
Layer: Layer A					
Quadrant:					
Operation:					
0380	2	RWE	edgeware, chicken claw	plate, muffin	unscalloped impressed chicken claw motif, lower surface completely exfoliated
0381	1	RWE	spongeware	saucer	coarse blue sponging
0382	1	stoneware	salt-glazed	crock	salt glaze on exterior, interior has dark brown glaze
0383	1	stoneware	salt-glazed	crock	brown glaze on interior, salt-glaze on exterior
0384	1	red earthenware, coarse	glazed	crock	dark brown glaze on interior, exterior completely exfoliated
0385	1	RWE	factory slip	holloware	brown-grey slip on exterior, interior completely exfoliated
0386	1	red earthenware, coarse	glazed	crock	medium brown glaze on interior, exterior is completely exfoliated
0387	2	ironstone	unidentified	flatware	blue on rim edge, upper surface completely exfoliated, likely edgeware fragments
<i>Operation Sub-total - 10</i>					
<i>Quadrant Sub-total - 10</i>					
<i>Layer Sub-total - 10</i>					
<i>Feature Sub-total - 10</i>					
<i>Unit Subtotal - 10</i>					
Unit: 530-180					
Feature:					
Layer: Layer A					
Quadrant:					
Operation:					
0339	1	RWE	transfer print	flatware	dark brown floral and geometric transfer print motif
0340	1	RWE	transfer print	flatware	black stippled geometric transfer print motif
0341	1	RWE	transfer print	flatware	scalloped and moulded rim, purple stippled floral and geometric motif
0342	1	RWE	transfer print	flatware	purple stippled transfer print motif, base and flatware footring fragment
0343	1	RWE	transfer print	flatware	black leaf and vine transfer print motif
0344	1	RWE	banded	holloware	brown and blue bands on exterior, interior completely exfoliated
0345	1	RWE	transfer print	flatware	delicate stippled purple fern transfer print motif, both sides partially exfoliated
0346	1	RWE	transfer print	holloware	stippled purple floral and diamond geometric motif on exterior, interior completely exfoliated

Ceramic Artifact Inventory

The McMichael Site (AiGw-532)

Cat#	Qty	Ware	Motif	Form	Comments
0347	1	RWE	transfer print	flatware	blue unidentifiable linear transfer print motif
0348	1	RWE	transfer print	holloware	ribbon banner motif with letter "R" on exterior
0349	1	RWE	transfer print	unidentifiable	feathery looking transfer print motif on one side, other side completely exfoliated
0350	1	RWE	undecorated	holloware	mostly exfoliated body fragment, carinated shoulder, likely a teacup or bowl
0351	1	ironstone	unidentified	flatware	stamped maker's mark on under surface with anchor in the middle and unintelligible writing around perimeter, upper surface completely exfoliated
0352	1	bone china	undecorated	flatware	slightly scalloped rim fragment
0354	1	pearlware	undecorated	holloware	small pearlware base fragment
0357	1	ironstone	undecorated	flatware	partial depressed flatware footring fragment
0359	1	ironstone	moulded	unidentifiable	partial moulded rim fragment
0360	1	red earthenware, coarse	glazed	crock	dark brown glaze on interior and exterior
0361	1	red earthenware, coarse	glazed	crock	dark brown glaze on interior, base and body on exterior are unglazed
0362	1	stoneware	salt-glazed	crock	dark brown glaze on interior, exterior is salt-glazed
0363	1	stoneware	salt-glazed	crock	dark brown glaze on interior, exterior is salt-glazed, rounded rim - possibly a mixing bowl
0364	2	red earthenware, coarse	undecorated	crock	small red earthenware fragments
<i>Operation Sub-total - 23</i>					
<i>Quadrant Sub-total - 23</i>					
<i>Layer Sub-total - 23</i>					
<i>Feature Sub-total - 23</i>					
<i>Unit Subtotal - 23</i>					
Unit: 530-171					
Feature:					
Layer: Layer B					
Quadrant:					
Operation:					
0333	1	RWE	undecorated	holloware	completely exfoliated on interior, carinated shoulder, likely a bowl or teacup
<i>Operation Sub-total - 1</i>					
<i>Quadrant Sub-total - 1</i>					
<i>Layer Sub-total - 1</i>					
<i>Feature Sub-total - 1</i>					
<i>Unit Subtotal - 1</i>					
Unit: 527-175					
Feature:					

Ceramic Artifact Inventory

The McMichael Site (AiGw-532)

Cat#	Qty	Ware	Motif	Form	Comments
Layer: Layer A					
Quadrant:					
Operation:					
0322	2	RWE	transfer print	holloware	dense blue transfer print on exterior
<i>Operation Sub-total - 2</i>					
<i>Quadrant Sub-total - 2</i>					
<i>Layer Sub-total - 2</i>					
<i>Feature Sub-total - 2</i>					
<i>Unit Subtotal - 2</i>					
Unit: 525-180					
Feature:					
Layer: Layer A					
Quadrant:					
Operation:					
0303	2	RWE	edgeware, straight	plate, supper	two mended fragment, thermally altered
0304	1	RWE	undecorated	flatware	
0305	1	ironstone	undecorated	flatware	
0306	4	RWE	transfer print	flatware	purple geometric transfer print motifs
0307	2	RWE	transfer print	flatware	unidentifiable blue transfer print motif
0308	1	red earthenware, coarse	glazed	crock	medium brown glaze on interior, exterior completely exfoliated
0309	3	red earthenware, coarse	glazed	crock	dark brown glaze on exterior, mostly exfoliated
0310	1	red earthenware, coarse	unidentified	crock	completely exfoliated fragment
<i>Operation Sub-total - 15</i>					
<i>Quadrant Sub-total - 15</i>					
<i>Layer Sub-total - 15</i>					
<i>Feature Sub-total - 15</i>					
<i>Unit Subtotal - 15</i>					
Unit: 520-190					
Feature:					
Layer: plough zone					
Quadrant:					
Operation:					
0296	1	stoneware	salt-glazed	crock	dark brown glaze on interior
<i>Operation Sub-total - 1</i>					
<i>Quadrant Sub-total - 1</i>					
<i>Layer Sub-total - 1</i>					
<i>Feature Sub-total - 1</i>					
<i>Unit Subtotal - 1</i>					
Unit: 520-180					
Feature:					
Layer: plough zone					
Quadrant:					
Operation:					
0272	1	RWE	transfer print	flatware	delicate unidentifiable purple transfer print motif on upper surface

Ceramic Artifact Inventory

The McMichael Site (AiGw-532)

Cat#	Qty	Ware	Motif	Form	Comments
0273	2	RWE	edgeware, scalloped	plate, table	2 mended fragments, scalloped blue edgeware motif
0274	1	RWE	hand-painted, late palette	saucer	bright green and blue floral handpainted motif on upper surface
0275	1	RWE	spongeware	teas	coarse blue sponging on exterior
0276	1	RWE	hand-painted, general	holloware	two parallel brown handpainted lines on exterior, interior completely exfoliated
0278	1	red earthenware, coarse	glazed	crock	very dark brown glaze on interior and exterior, double lipped rim fragment
0280	1	RWE	hand-painted, general	holloware	blue handpainted line on exterior
0282	1	RWE	undecorated	flatware	small mostly exfoliated rim
<i>Operation Sub-total - 9</i>					
<i>Quadrant Sub-total - 9</i>					
<i>Layer Sub-total - 9</i>					
<i>Feature Sub-total - 9</i>					
<i>Unit Subtotal - 9</i>					
Unit: 510-180					
Feature:					
Layer: Layer B					
Quadrant:					
Operation:					
0225	1	ironstone	moulded	flatware	flatware footring and base fragment, upper surface has fluting along side
0226	1	ironstone	moulded	flatware	moulded grapes on upper surface
0227	1	Ironstone	unidentified	holloware	holloware footring fragment
0228	1	ironstone	unidentified	flatware	flatware footring fragment
0229	1	red earthenware, coarse	glazed	crock	dark brown glaze, mostly exfoliated
<i>Operation Sub-total - 5</i>					
<i>Quadrant Sub-total - 5</i>					
<i>Layer Sub-total - 5</i>					
<i>Feature Sub-total - 5</i>					
<i>Unit Subtotal - 5</i>					
Unit: 505-185					
Feature:					
Layer: Layer B					
Quadrant:					
Operation:					
0208	1	RWE	transfer print	flatware	geometric and floral transfer print motif on upper surface
0209	1	red earthenware, coarse	glazed	crock	dark brown glaze on interior and exterior, rim with flat lip
0210	1	ironstone	undecorated	plate, table	
0211	1	RWE	transfer print	flatware	unidentifiable blue transfer motif on upper surface
0212	1	RWE	hand-painted, late palette	teas	dark rose paint on exterior, interior completely exfoliated
<i>Operation Sub-total - 5</i>					

Ceramic Artifact Inventory

The McMichael Site (AiGw-532)

Cat#	Qty	Ware	Motif	Form	Comments
<i>Quadrant Sub-total - 5</i>					
<i>Layer Sub-total - 5</i>					
<i>Feature Sub-total - 5</i>					
<i>Unit Subtotal - 5</i>					
Unit: 500-190					
Feature:					
Layer: Layer B					
Quadrant:					
Operation:					
0198	1	pearlware	hand-painted, early palette	teas	small stroke of olive green handpainting on exterior
0199	4	RWE	transfer print	flatware	3 mended fragments together, unidentifiable transfer print motif on upper surface
<i>Operation Sub-total - 5</i>					
<i>Quadrant Sub-total - 5</i>					
<i>Layer Sub-total - 5</i>					
<i>Feature Sub-total - 5</i>					
<i>Unit Subtotal - 5</i>					
Unit: 500-185					
Feature:					
Layer: Layer B					
Quadrant:					
Operation:					
0162	1	ironstone	moulded	flatware	moulded rim fragment, curling plant tendril motif
0163	1	RWE	floware	flatware	unidentifiable floware motif on upper surface
0164	1	RWE	hand-painted, late palette	saucer	bright green handpainted line along rim
0165	1	RWE	hand-painted, late palette	teas	exterior entirely painted pinky purple, interior exfoliated
0166	1	buff earthenware	rockingham	mixing bowl	
0167	1	red earthenware, coarse	glazed	crock	reddish brown glaze on interior and exterior
0168	1	red earthenware, coarse	glazed	crock	flat base fragment, mottled brown glaze on interior, exterior/ under side undecorated
0169	1	RWE	edgeware, moulded design	flatware	small rim fragment, impressed bud motif
0170	1	RWE	edgeware, scalloped	flatware	
0171	1	RWE	unidentified	flatware	wisps of blue lines on upper surface, likely edgeware motif
0172	2	red earthenware, coarse	glazed	crock	dark brown glaze on interior, exterior exfoliated
0173	3	RWE	transfer print	flatware	unidentifiable transfer print motif on upper surface, other side completely exfoliated
0174	2	RWE	transfer print	flatware	unidentifiable transfer print motif on upper surface

Ceramic Artifact Inventory

The McMichael Site (AiGw-532)

Cat#	Qty	Ware	Motif	Form	Comments
0175	1	RWE	unidentified	flatware	thermally altered flatware footing fragment
0177	1	bone china	undecorated	flatware	
<i>Operation Sub-total - 19</i>					
<i>Quadrant Sub-total - 19</i>					
<i>Layer Sub-total - 19</i>					
<i>Feature Sub-total - 19</i>					
<i>Unit Subtotal - 19</i>					
Unit: 495-185					
Feature:					
Layer: Layer B					
Quadrant:					
Operation:					
0148	1	bone china	undecorated	flatware	slightly thermally altered
0149	2	RWE	undecorated	holloware	
0150	2	red earthenware, coarse	unidentified	crock	completely exfoliated on both sides
<i>Operation Sub-total - 5</i>					
<i>Quadrant Sub-total - 5</i>					
<i>Layer Sub-total - 5</i>					
<i>Feature Sub-total - 5</i>					
<i>Unit Subtotal - 5</i>					
Unit: 490-190					
Feature:					
Layer: Layer B					
Quadrant:					
Operation:					
0132	1	RWE	transfer print	flatware	slightly thermally altered, blue floral motif on upper surface
0133	1	RWE	transfer print	holloware	unidentifiable blue transfer print motif on both sides
0134	1	bone china	undecorated	flatware	partially exfoliated
0135	1	yellowware	undecorated	unidentifiable	
0136	1	red earthenware, coarse	glazed	crock	reddish brown glaze on interior and exterior
0137	3	RWE	undecorated	flatware	small partial rim fragments
0138	1	red earthenware, coarse	glazed	crock	thick green glaze on both sides
<i>Operation Sub-total - 9</i>					
<i>Quadrant Sub-total - 9</i>					
<i>Layer Sub-total - 9</i>					
<i>Feature Sub-total - 9</i>					
<i>Unit Subtotal - 9</i>					
Unit: 483-199					
Feature:					
Layer: Layer B					
Quadrant:					
Operation:					

Ceramic Artifact Inventory

The McMichael Site (AiGw-532)

Cat#	Qty	Ware	Motif	Form	Comments
0127	1	yellowware	banded	holloware	holloware vessel with alternating white, black and yellow bands, likely a large bowl
0128	1	yellowware	banded	holloware	black and white bands on exterior, interior completely exfoliated
0129	1	red earthenware, coarse	glazed	crock	flecks of dark brown glaze on interior, exterior completely exfoliated
0130	1	red earthenware, coarse	glazed	crock	white glaze on one side, other side completely exfoliated
<i>Operation Sub-total - 4</i>					
<i>Quadrant Sub-total - 4</i>					
<i>Layer Sub-total - 4</i>					
<i>Feature Sub-total - 4</i>					
<i>Unit Subtotal - 4</i>					
Unit: 480-190					
Feature:					
Layer: Layer B					
Quadrant:					
Operation:					
0122	1	RWE	unidentified	unidentifiable	thermally altered, hint of blue on one side
<i>Operation Sub-total - 1</i>					
<i>Quadrant Sub-total - 1</i>					
<i>Layer Sub-total - 1</i>					
<i>Feature Sub-total - 1</i>					
<i>Unit Subtotal - 1</i>					
Unit: 470-180					
Feature:					
Layer: Layer B					
Quadrant:					
Operation:					
0109	1	ironstone	undecorated	plate, muffin	
0110	1	ironstone	moulded	flatware	moulded upper surface with scalloping along side, partial flatware footing
0111	1	yellowware	undecorated	holloware	yellowware fragment, one side completely exfoliated
0112	1	ironstone	undecorated	holloware	
0113	1	RWE	undecorated	unidentifiable	one side completely exfoliated
0114	1	bone china	unidentified	plate, supper	upper surface mostly exfoliated
0116	1	yellowware	unidentified	unidentifiable	completely exfoliated yellowware fragment
0118	1	red earthenware, coarse	glazed	crock	reddish brown glaze on interior, exterior undecorated
0119	1	red earthenware, coarse	glazed	crock	dark brown glaze on exterior, interior exfoliated
0120	2	red earthenware, coarse	glazed	crock	dark brown glaze on interior and exterior
<i>Operation Sub-total - 11</i>					
<i>Quadrant Sub-total - 11</i>					

Ceramic Artifact Inventory

The McMichael Site (AiGw-532)

Cat#	Qty	Ware	Motif	Form	Comments
<i>Layer Sub-total - 11</i>					
<i>Feature Sub-total - 11</i>					
<i>Unit Subtotal - 11</i>					
Unit: 460-170					
Feature:					
Layer: Layer B					
Quadrant:					
Operation:					
0096	1	rwe	transfer print	flatware	teal stippled rococo transfer print motif
0097	1	RWE	undecorated	flatware	
0098	1	ironstone	undecorated	flatware	
<i>Operation Sub-total - 3</i>					
<i>Quadrant Sub-total - 3</i>					
<i>Layer Sub-total - 3</i>					
<i>Feature Sub-total - 3</i>					
<i>Unit Subtotal - 3</i>					
Unit:					
Feature:					
Layer: surface					
Quadrant:					
Operation: CSC					
0051	1	RWE	spongeware	saucer	fine light blue sponging on upper surface, partially exfoliated
0052	1	RWE	transfer print	flatware	dark brown floral and linear transfer print motif on upper surface, other side completely exfoliated
0053	1	RWE	floware	flatware	partial rim and body fragment, linear stippled floware motif on upper surface
0054	1	RWE	edgeware, straight	plate, table	straight blue transfer print rim fragment
0055	1	ironstone	moulded, misc patterns	holloware	moulded diamond motif on exterior
0056	1	RWE	hand-painted, late palette	saucer	handpainted pink flower on upper surface
0057	1	RWE	transfer print	holloware	geometric blue transfer print motif on exterior, interior completely exfoliated
0058	1	RWE	transfer print	holloware	blue nature transfer print motif on interior and exterior
0059	1	pearlware	transfer print, olde blue	holloware	Olde Blue motif on exterior, has a carinated shoulder, likely a London shaped teacup
0060	1	pearlware	edgeware, scalloped	flatware	small partial rim fragment
0061	1	RWE	floware	flatware	rococo floware motif on upper surface
0062	1	RWE	transfer print	holloware	indeterminate blue transfer print motif on exterior, has a carinated shoulder, likely London shape teacup
0063	1	RWE	transfer print	holloware	linear geometric motif on paneled exterior, interior completely exfoliated

Ceramic Artifact Inventory

The McMichael Site (AiGw-532)

Cat#	Qty	Ware	Motif	Form	Comments
0064	1	pearlware	unidentified	holloware	scalloped rim fragment with blue along rim edge, interior is completely exfoliated, likely scalloped edgeware fragment
0065	1	RWE	undecorated	plate, muffin	mostly exfoliated RWE rim fragment
0066	1	RWE	undecorated	flatware	flatware double ringed depressed foot and base fragment
0067	1	ironstone	unidentified	holloware	holloware footring fragment, likely for a small bowl or teacup
0068	1	pearlware	undecorated	holloware	undecorated pearlware holloware vessel fragment, appears to have straight sides with a narrow diameter
0069	1	pearlware	unidentified	unidentifiable	hint of green along rim edge, interior completely exfoliated
0070	1	RWE	unidentified	holloware	thermally altered ceramic fragment
0071	1	ironstone	undecorated	holloware	
0072	1	pearlware	undecorated	flatware	mostly exfoliated small pearlware rim fragment
0073	1	RWE	undecorated	holloware	thick rounded holloware footring fragment, likely for a large bowl or serving vessel
0074	1	pearlware	hand-painted, monochrome	teas	thick blue handpainted line on exterior
0075	1	pearlware	hand-painted, early palette	teas	very small fragment, brown handpainted line on one side, other side completely exfoliated
0076	6	pearlware	undecorated	flatware	
0077	18	RWE	undecorated	unidentifiable	
0078	1	red earthenware, coarse	glazed	crock	dark chocolate brown glaze on interior, exterior is brown but unglazed
0079	1	red earthenware, coarse	glazed	crock	dark brown glaze on interior, reddish brown glaze on exterior
0080	1	red earthenware, coarse	glazed	crock	medium brown glaze on interior, exterior exfoliated
0081	1	jackfield	glazed	teas	
0082	1	red earthenware, refined	rockingham	holloware	scalloped rim fragment
Operation Sub-total - 54					
Quadrant Sub-total - 54					
Layer Sub-total - 54					
Feature Sub-total - 54					
Unit Subtotal - 54					
Grandtotal - 182					

APPENDIX B: McMichael Site (AiGw-532) Artifact Inventory—Non-ceramics

Non-ceramic Artifact Inventory

The McMichael Site (AiGw-532)

Cat#	Qty	Type	Material	Comments
Layer: surface				
Unit:				
Feature:				
Quadrant:				
0083	1	container, unidentifiable	glass	thick colourless glass, round base with no distinguishing features
0084	1	window glass	glass	colourless
0085	2	container, unidentifiable	glass	dark green glass
0086	1	container, unidentifiable	glass	blue-green glass, paneled body fragment
0087	1	container, unidentifiable	glass	bright green glass body and finish fragment, partially broken folded-out finish
0088	1	unidentified	glass	dark grey glass with ground edge
0089	1	nail, machine cut	metal, ferrous	
0090	1	unidentified	metal, white	heavy narrow folded metal scrap fragment
0091	1	nail, indeterminate	metal, ferrous	complete but unidentifiable nail
0092	1	spike	metal, ferrous	head and shank of hand-wrought spike
0093	2	nail, machine cut	metal, ferrous	head and shank portions
0094	1	nail, machine cut	metal, ferrous	
0095	1	faunal, mammal	bone	medium mammal rib fragment, calcined
Quadrant Sub-total - 15				
Feature Sub-total - 15				
Unit Sub-total - 15				
Layer Sub-total - 15				
Layer: plough zone				
Unit: 520-190				
Feature:				
Quadrant:				
0297	1	unidentified	porcellaneous ware	small yellowware fragment, one side completely exfoliated
0298	1	container, unidentifiable	glass	amber glass
0299	1	container, unidentifiable	glass	small colourless glass fragment
0300	1	container, unidentifiable	glass	colourless glass, body with small amount of base, parison mould seam on base and side
0301	1	nail, wire	metal, ferrous	
0302	1	faunal, avian	bone	bird long bone shaft
Quadrant Sub-total - 6				
Feature Sub-total - 6				
Unit Sub-total - 6				
Unit: 520-180				
Feature:				
Quadrant:				
0277	1	unidentified	porcellaneous ware	very small RWE fragment with yellow slip on one side
0279	1	container, unidentifiable	stoneware	smooth very dark brown glaze on interior, salt glaze on exterior
0281	1	unidentified	porcellaneous ware	small bone china fragment
0283	5	unidentified	porcellaneous ware	small RWE fragments
0284	1	unidentified	porcellaneous ware	flat Ironstone fragment
0285	1	container, liquor	glass	colourless glass, oval shaped base fragment, front panel has "12 OZ S.", bottom has "_BERTA DISTILLERS, LTD" "6 6" AND "CANADA" embossed on the bottom, parison mould seams on base bottom and sides

Non-ceramic Artifact Inventory

The McMichael Site (AiGw-532)

Cat#	Qty	Type	Material	Comments
0286	2	container, unidentifiable	glass	amber glass
0287	3	container, unidentifiable	glass	colourless glass
0288	4	window glass	glass	light blue window glass
0289	2	drainage tile	clay	red clay drainage tile fragments
0290	1	pull-tab closure	metal, white	tin pull tab closure - for beer or soft drink
0291	1	faunal, mammal	bone	calcined bone fragment
0292	3	faunal, mammal	bone	weathered mammal long bone fragments
0293	1	faunal, mammal	bone	small mammal pelvis
0294	2	wire	metal, ferrous	
0295	1	nail, wire	metal, ferrous	
Quadrant Sub-total - 30				
Feature Sub-total - 30				
Unit Sub-total - 30				
Layer Sub-total - 36				
Layer: Layer B				
Unit: 540-180				
Feature:				
Quadrant:				
0404	1	container, unidentifiable	glass	colourless glass, "orange peel" type appearance on exterior
0405	1	nail, wire	metal, ferrous	
Quadrant Sub-total - 2				
Feature Sub-total - 2				
Unit Sub-total - 2				
Unit: 535-175				
Feature:				
Quadrant:				
0400	1	unidentified	porcellaneous ware	RWE body fragment
0401	1	drainage tile	clay	modern red clay drainage tile
0402	2	container, unidentifiable	glass	colourless glass
0403	1	faunal, mammal	bone	juvenile medium mammal long bone diaphysis
Quadrant Sub-total - 5				
Feature Sub-total - 5				
Unit Sub-total - 5				
Unit: 533-183				
Feature:				
Quadrant:				
0398	1	nail, wire	metal, ferrous	
0399	1	lithic artifact	chert	Onondaga chert, secondary knapping flake, thermally altered
Quadrant Sub-total - 2				
Feature Sub-total - 2				
Unit Sub-total - 2				
Unit: 530-188				
Feature:				
Quadrant:				
0379	1	unidentified	clay	mostly exfoliated unglazed red clay fragment, possibly a brick or flowerpot
Quadrant Sub-total - 1				
Feature Sub-total - 1				
Unit Sub-total - 1				

Non-ceramic Artifact Inventory

The McMichael Site (AiGw-532)

Cat#	Qty	Type	Material	Comments
Unit: 530-180				
Feature:				
Quadrant:				
0374	1	nail, wire	metal, ferrous	
0375	1	unidentified	metal, ferrous	metal scrap blob
<i>Quadrant Sub-total - 2</i>				
<i>Feature Sub-total - 2</i>				
<i>Unit Sub-total - 2</i>				
Unit: 530-171				
Feature:				
Quadrant:				
0334	1	container, unidentifiable	glass	light aqua glass
0335	1	container, unidentifiable	glass	lightly solarized glass, thin rim - likely a for an oil lamp
0336	1	nail, machine cut	metal, ferrous	good condition, head looks hand-wrought but shank profile is rectangular
0337	1	nail, machine cut	metal, ferrous	
0338	2	nail, machine cut	metal, ferrous	head and shank portions
<i>Quadrant Sub-total - 6</i>				
<i>Feature Sub-total - 6</i>				
<i>Unit Sub-total - 6</i>				
Unit: 527-175				
Feature:				
Quadrant:				
0330	1	drainage tile	clay	modern red clay drainage tile fragment
0331	1	brick	clay	red clay brick fragment
0332	1	window glass	glass	thin colourless glass
<i>Quadrant Sub-total - 3</i>				
<i>Feature Sub-total - 3</i>				
<i>Unit Sub-total - 3</i>				
Unit: 525-180				
Feature:				
Quadrant:				
0320	1	drainage tile	clay	modern red clay drainage tile fragment
0321	1	nail, wire	metal, ferrous	
<i>Quadrant Sub-total - 2</i>				
<i>Feature Sub-total - 2</i>				
<i>Unit Sub-total - 2</i>				
Unit: 520-174				
Feature:				
Quadrant:				
0265	1	brick	clay	modern red clay brick fragment
0266	2	container, unidentifiable	glass	amber glass fragment
0267	3	window glass	glass	very light blue window glass
0268	5	container, unidentifiable	glass	colourless glass
0269	1	container, unidentifiable	glass	crown finish fragment, likely soft drink or beer bottle
0270	1	faunal, mammal	bone	small mammal vertebra
0271	1	faunal, avian	bone	thin small bird bone fragment
<i>Quadrant Sub-total - 14</i>				
<i>Feature Sub-total - 14</i>				

Non-ceramic Artifact Inventory

The McMichael Site (AiGw-532)

Cat#	Qty	Type	Material	Comments
<i>Unit Sub-total - 14</i>				
Unit: 510-190				
Feature:				
Quadrant:				
0237	1	unidentified	porcellaneous ware	RWE fragment
0238	1	container, unidentifiable	glass	colourless glass
0239	1	container, unidentifiable	glass	dark green glass, likely a liquor bottle
0240	1	nail, machine cut	metal, ferrous	
0241	1	faunal, mammal	bone	medium mammal tooth
0242	1	faunal, mammal	bone	incomplete large mammal tooth
<i>Quadrant Sub-total - 6</i>				
<i>Feature Sub-total - 6</i>				
<i>Unit Sub-total - 6</i>				
Unit: 510-180				
Feature:				
Quadrant:				
0221	1	container, soft drink	glass	colourless glass, letters "COCA" embossed in script lettering on exterior
0222	1	window glass	glass	light green glass
0223	1	container, unidentifiable	glass	light aqua glass
0224	3	container, unidentifiable	glass	colourless glass
0230	1	unidentified	porcellaneous ware	ironstone body fragments
0231	1	smoking pipe	white ball clay	small undecorated bowl fragment
0232	1	screw	metal, ferrous	head and partial shank portion
0233	1	nail, machine cut	metal, ferrous	
0234	4	nail, machine cut	metal, ferrous	head and shank portions
0236	1	nail, indeterminate	metal, ferrous	
0236	1	unidentified	metal, composite	flat metal strap with round flat knob at one end, around knob there appears to be vulcanized rubber welted together
<i>Quadrant Sub-total - 16</i>				
<i>Feature Sub-total - 16</i>				
<i>Unit Sub-total - 16</i>				
Unit: 505-185				
Feature:				
Quadrant:				
0213	1	unidentified	porcellaneous ware	bone china body fragment
0214	6	unidentified	porcellaneous ware	ironstone body fragments
0215	1	container, unidentifiable	glass	amber glass
0216	1	window glass	glass	colourless glass
0217	1	window glass	glass	thick colourless glass
0218	1	container, unidentifiable	glass	colourless glass, white and blue paint on exterior, unidentifiable motif
0219	1	nail, machine cut	metal, ferrous	
0220	1	drainage tile	clay	red clay drainage tile fragment
<i>Quadrant Sub-total - 13</i>				
<i>Feature Sub-total - 13</i>				
<i>Unit Sub-total - 13</i>				
Unit: 500-201				
Feature:				
Quadrant:				

Non-ceramic Artifact Inventory

The McMichael Site (AiGw-532)

Cat#	Qty	Type	Material	Comments
0205	2	window glass	glass	colourless
0206	1	nail, wire	metal, ferrous	
0207	3	faunal, mammal	bone	small mammal long bone fragments
<i>Quadrant Sub-total - 6</i>				
<i>Feature Sub-total - 6</i>				
<i>Unit Sub-total - 6</i>				
Unit: 500-190				
Feature:				
Quadrant:				
0200	6	unidentified	porcellaneous ware	small RWE body fragments
0201	2	unidentified	porcellaneous ware	very small pearlware fragments
0202	1	container, unidentifiable	glass	colourless glass, embossed letters "L. OZ", likely a beverage bottle
0203	1	nail, machine cut	metal, ferrous	head and shank
0204	3	nail, machine cut	metal, ferrous	
<i>Quadrant Sub-total - 13</i>				
<i>Feature Sub-total - 13</i>				
<i>Unit Sub-total - 13</i>				
Unit: 500-185				
Feature:				
Quadrant:				
0176	1	unidentified	porcellaneous ware	very very small RWE fragment with light brown glaze on one side, other side exfoliated
0178	6	unidentified	porcellaneous ware	tiny RWE fragments
0179	2	unidentified	porcellaneous ware	tiny Ironstone fragments
0180	1	container, unidentifiable	glass	thick colourless glass, red and white paint with the letters "_ t u"
0181	1	container, unidentifiable	glass	amber glass, round base fragment
0182	3	container, unidentifiable	glass	colourless glass
0183	4	container, unidentifiable	glass	amber glass
0184	2	container, unidentifiable	glass	light aqua glass
0185	9	window glass	glass	
0186	1	smoking pipe	white ball clay	
0187	1	smoking pipe	white ball clay	undecorated
0188	1	smoking pipe	white ball clay	stem and partial shank bowl junction, spur is broken off
0189	2	drainage tile	clay	red clay drainage tile fragments
0190	1	faunal, mammal	bone	sawn bone fragment
0191	1	faunal, mammal	bone	calcined bone fragment
0192	10	nail, machine cut	metal, ferrous	head and shank fragments
0193	4	nail, machine cut	metal, ferrous	
0194	1	nail, wire	metal, ferrous	
0195	4	nail, wire	metal, ferrous	
0196	1	unidentified	metal, ferrous	semi-circular metal tab with hole through the centre, embossed letters "PATENT" on one side, other side is unfinished
0197	1	ring gear	metal, ferrous	ring gear
<i>Quadrant Sub-total - 57</i>				
<i>Feature Sub-total - 57</i>				
<i>Unit Sub-total - 57</i>				

Non-ceramic Artifact Inventory

The McMichael Site (AiGw-532)

Cat#	Qty	Type	Material	Comments
Unit: 500-180				
Feature:				
Quadrant:				
0257	3	unidentified	porcellaneous ware	RWE fragments
0258	1	container, unidentifiable	glass	amber glass
0259	1	container, unidentifiable	glass	dark green glass
0260	1	container, unidentifiable	glass	colourless glass, roughened moulded exterior, "orange peel" type appearance
0261	1	container, unidentifiable	glass	colourless glass, unidentifiable finish type
0262	1	container, unidentifiable	glass	light green glass, flat panel fragment, moulded ribbed motif
0263	1	nail, machine cut	metal, ferrous	good condition, head and shank portion
0264	1	nail, wire	metal, ferrous	
<i>Quadrant Sub-total - 10</i>				
<i>Feature Sub-total - 10</i>				
<i>Unit Sub-total - 10</i>				
Unit: 495-185				
Feature:				
Quadrant:				
0151	1	container, unidentifiable	glass	bright green glass
0152	1	container, unidentifiable	glass	colourless glass
0153	1	container, unidentifiable	glass	amber glass
0154	4	window glass	glass	
0155	1	smoking pipe	white ball clay	letters "MO_" on one side and "_SON" the other side
0156	3	drainage tile	clay	coarse red clay drainage tiles
0157	1	faunal, mammal	bone	mammal fragment
0158	1	staple	metal, ferrous	fence staple
0159	3	nail, machine cut	metal, ferrous	head and shank portions
0160	3	nail, machine cut	metal, ferrous	
0161	1	washer	metal, ferrous	half of a flat washer
<i>Quadrant Sub-total - 20</i>				
<i>Feature Sub-total - 20</i>				
<i>Unit Sub-total - 20</i>				
Unit: 490-200				
Feature:				
Quadrant:				
0144	1	unidentified	porcellaneous ware	small RWE fragment, one side exfoliated
0145	1	container, unidentifiable	glass	dark green glass
0146	1	window glass	glass	very light green window glass
0147	1	nail, machine cut	metal, ferrous	
<i>Quadrant Sub-total - 4</i>				
<i>Feature Sub-total - 4</i>				
<i>Unit Sub-total - 4</i>				
Unit: 490-190				
Feature:				
Quadrant:				
0139	3	unidentified	porcellaneous ware	completely exfoliated white ceramic fragments
0140	2	container, unidentifiable	glass	colourless glass
0141	2	faunal, mammal	bone	mammal fragments

Non-ceramic Artifact Inventory

The McMichael Site (AiGw-532)

Cat#	Qty	Type	Material	Comments
0142	1	faunal, mammal	bone	calcined mammal fragment
0143	1	nail, indeterminate	metal, ferrous	
<i>Quadrant Sub-total - 9</i>				
<i>Feature Sub-total - 9</i>				
<i>Unit Sub-total - 9</i>				
Unit: 483-199				
Feature:				
Quadrant:				
0131	1	lithic artifact	chert	Onondaga chert, shatter fragment
<i>Quadrant Sub-total - 1</i>				
<i>Feature Sub-total - 1</i>				
<i>Unit Sub-total - 1</i>				
Unit: 480-190				
Feature:				
Quadrant:				
0123	1	wire	metal, ferrous	
0124	1	nail, indeterminate	metal, ferrous	
0125	1	faunal, mammal	bone	small to medium mammal orbit fragment
0126	1	faunal, mammal	bone	weathered mammal fragment, unidentifiable
<i>Quadrant Sub-total - 4</i>				
<i>Feature Sub-total - 4</i>				
<i>Unit Sub-total - 4</i>				
Unit: 470-180				
Feature:				
Quadrant:				
0115	1	container, unidentifiable	stoneware	buff stoneware with salt glaze on exterior and dark brown glaze on interior
0117	1	unidentified	porcellaneous ware	RWE cylindrical base and body fragment, unidentifiable moulded motif on exterior, likely a figurine or decoration
0121	1	window glass	glass	colourless window glass
<i>Quadrant Sub-total - 3</i>				
<i>Feature Sub-total - 3</i>				
<i>Unit Sub-total - 3</i>				
Unit: 460-170				
Feature:				
Quadrant:				
0099	5	window glass	glass	thick window glass
0100	25	window glass	glass	thin window glass
0101	4	container, unidentifiable	glass	amber glass
0102	6	container, unidentifiable	glass	colourless glass
0103	1	drainage tile	terracotta	partially exfoliated drainage tile
0104	1	unidentified	metal, ferrous	flat metal scrap fragment
0105	3	nail, wire	metal, ferrous	head and shank portions
0106	7	nail, indeterminate	metal, ferrous	
0107	2	staple	metal, ferrous	fence staple fragments
0108	1	nail, machine cut	metal, ferrous	head and shank portion
<i>Quadrant Sub-total - 55</i>				
<i>Feature Sub-total - 55</i>				
<i>Unit Sub-total - 55</i>				

Non-ceramic Artifact Inventory

The McMichael Site (AiGw-532)

Cat#	Qty	Type	Material	Comments
<i>Layer Sub-total - 254</i>				
Layer: Layer A				
Unit: 533-183				
Feature:				
Quadrant:				
0388	2	unidentified	porcellaneous ware	RWE body fragments
0389	1	unidentified	porcellaneous ware	thermally altered RWE fragment
0390	1	unidentified	clay	unglazed red clay fragments, likely brick or flowerpot
0391	1	container, liquour	glass	amber glass, crown finish fragment, mould seams along side and under finish, beer bottle
0392	1	container, unidentifiable	glass	emerald green glass
0393	9	container, unidentifiable	glass	amber glass
0394	1	window glass	glass	
0395	1	wire	metal, ferrous	
0396	2	nail, machine cut	metal, ferrous	head and shank portions
0397	1	nail, hand-wrought	metal, ferrous	
<i>Quadrant Sub-total - 20</i>				
<i>Feature Sub-total - 20</i>				
<i>Unit Sub-total - 20</i>				
Unit: 530-188				
Feature:				
Quadrant:				
0376	3	container, unidentifiable	glass	colourless glass
0377	1	smoking pipe	white ball clay	small undecorated fragment
0378	1	faunal, mammal	bone	mammal long bone shaft fragment
<i>Quadrant Sub-total - 5</i>				
<i>Feature Sub-total - 5</i>				
<i>Unit Sub-total - 5</i>				
Unit: 530-180				
Feature:				
Quadrant:				
0353	2	unidentified	porcellaneous ware	thermally altered RWE fragments
0355	1	unidentified	porcellaneous ware	pearlware body fragment
0356	2	unidentified	porcellaneous ware	Ironstone body fragments
0358	7	unidentified	porcellaneous ware	small RWE body fragments
0365	7	window glass	glass	
0366	13	container, unidentifiable	glass	colourless glass
0367	5	faunal, mammal	bone	weathered large mammal fragments
0368	2	faunal, mammal	bone	mammal tooth fragments
0369	1	faunal, mammal	bone	small mammal femur
0370	8	wire	metal, ferrous	
0371	1	nail, hand-wrought	metal, ferrous	
0372	10	nail, machine cut	metal, ferrous	
0373	2	unidentified	metal, ferrous	thick strapping-like metal scrap fragments
<i>Quadrant Sub-total - 61</i>				
<i>Feature Sub-total - 61</i>				
<i>Unit Sub-total - 61</i>				
Unit: 527-175				
Feature:				

Non-ceramic Artifact Inventory

The McMichael Site (AiGw-532)

Cat#	Qty	Type	Material	Comments
Quadrant:				
0323	2	unidentified	porcellaneous ware	RWE body fragments
0324	1	window glass	glass	light green window glass
0325	1	nail, wire	metal, ferrous	
0326	1	nail, machine cut	metal, ferrous	small nail
0327	3	other	metal, ferrous	rounded metal scrap fragments, likely a can
0328	2	faunal, mammal	bone	small mammal long bones
0329	1	faunal, shell	shell	
<i>Quadrant Sub-total - 11</i>				
<i>Feature Sub-total - 11</i>				
<i>Unit Sub-total - 11</i>				
Unit: 525-180				
Feature:				
Quadrant:				
0311	1	container, unidentifiable	glass	amber glass, round base, parison mould seams, likely a beer bottle
0312	2	container, unidentifiable	glass	amber glass
0313	3	window glass	glass	
0314	3	container, unidentifiable	glass	colourless glass
0315	1	smoking pipe	white ball clay	stem fragment, left side has letters "BANNER_" impressed, right side has "_REAL" impressed
0316	1	faunal, mammal	bone	calcined bone fragment
0317	1	faunal, mammal	bone	weathered mammal bone
0318	2	nail, wire	metal, ferrous	
0319	4	nail, indeterminate	metal, ferrous	head and shank portions
<i>Quadrant Sub-total - 18</i>				
<i>Feature Sub-total - 18</i>				
<i>Unit Sub-total - 18</i>				
Unit: 515-180				
Feature:				
Quadrant:				
0243	1	unidentified	porcellaneous ware	flat RWE fragment
0244	1	unidentified	porcellaneous ware	completely exfoliated white ceramic fragment
0245	1	container, unidentifiable	glass	light green glass
0246	1	container, unidentifiable	glass	emerald coloured glass
0247	1	container, unidentifiable	glass	amber glass
0248	1	container, soft drink	glass	colourless glass, upper section has red and yellow painted words and outline "PEPSI_CO", below that is embossed geometric motif
0249	1	window glass	glass	colourless frosted window glass
0250	1	window glass	glass	colourless window glass
0251	3	drainage tile	clay	red clay drainage tile fragments
0252	1	wire	metal, ferrous	
0253	3	nail, indeterminate	metal, ferrous	
0254	1	nail, wire	metal, ferrous	large wire nail
0255	1	nail, machine cut	metal, ferrous	small machine cut nail
0256	1	faunal, mammal	bone	medium juvenile mammal phalanx
<i>Quadrant Sub-total - 18</i>				
<i>Feature Sub-total - 18</i>				

Non-ceramic Artifact Inventory

The McMichael Site (AiGw-532)

Cat#	Qty	Type	Material	Comments
<i>Unit Sub-total -</i>		18		
<i>Layer Sub-total -</i>		133		
<i>Grand Total -</i>		438		
