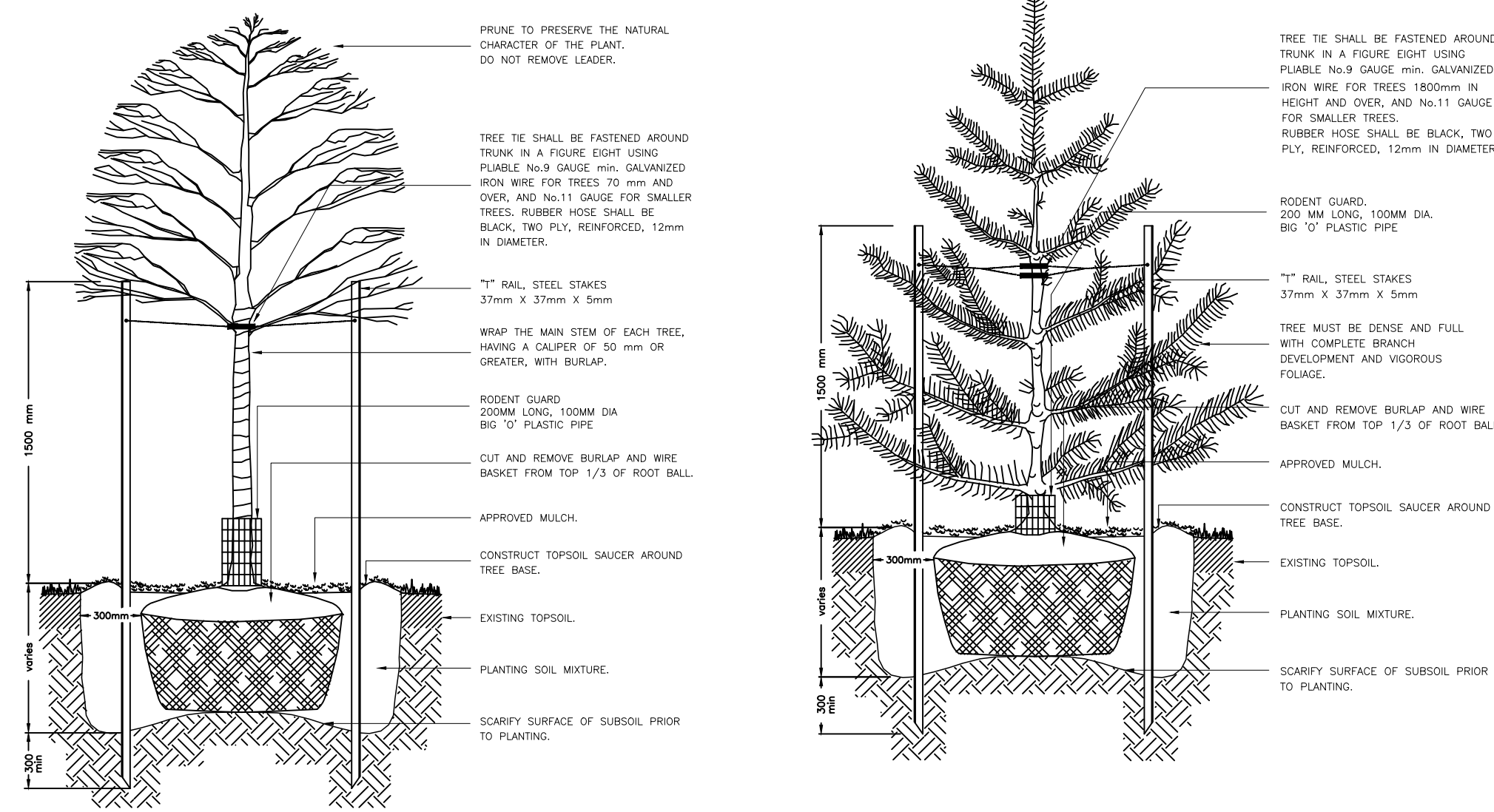


Key	Botanical Name	Common Name	Cal.	Ht.	Spr.	Cond.	Remarks	Total
Qb	Quercus bicolor	Swamp White Oak	70mm			WB	Uniform Specimen	3
Afa	Acer Freemanii 'Autumn Blaze'	Autumn Blaze Maple	70mm			WB	Tree Form	1
Sri	Syringa Recticulata 'Ivory Silk'	Ivory Silk Japanese Lilac	60mm			WB	Tree Form	1
ORNAMENTAL TREES								
Fsd	Fagus Sylvatica 'Dawyc Green'	Dawyc Green Beech	50mm			WB	Tree Form	4
CONIFEROUS TREES								
Pr	Pinus resinosa	Red Pine	175cm			WB	Uniform Specimen	1
LARGE DECIDUOUS SHRUBS								
ac	Amelanchier canadensis	Serviceberry	150cm		15 GAL		Multi-stem	2
CONIFEROUS/ EVERGREEN SHRUBS								
jhb	Juniperus horizontalis 'Blue Chip'	Blue Chip Juniper	40cm		3 GAL		Uniform Specimen	8
lmh	Taxus x media 'Hicksii'	Hick's Yew	80cm		5 GAL		Uniform Specimen	14
tcn	Taxus cuspidata 'Nana'	Dwarf Japanese Yew	40cm		3 GAL		Uniform Specimen	8
ORNAMENTAL GRASSES/ PERENNIALS								
ckf	Calamagrostis x acutiflora 'Karl Foerster'	Feather Reed Grass			1 GAL		Uniform Specimen	13

PLANT LIST - LOT C

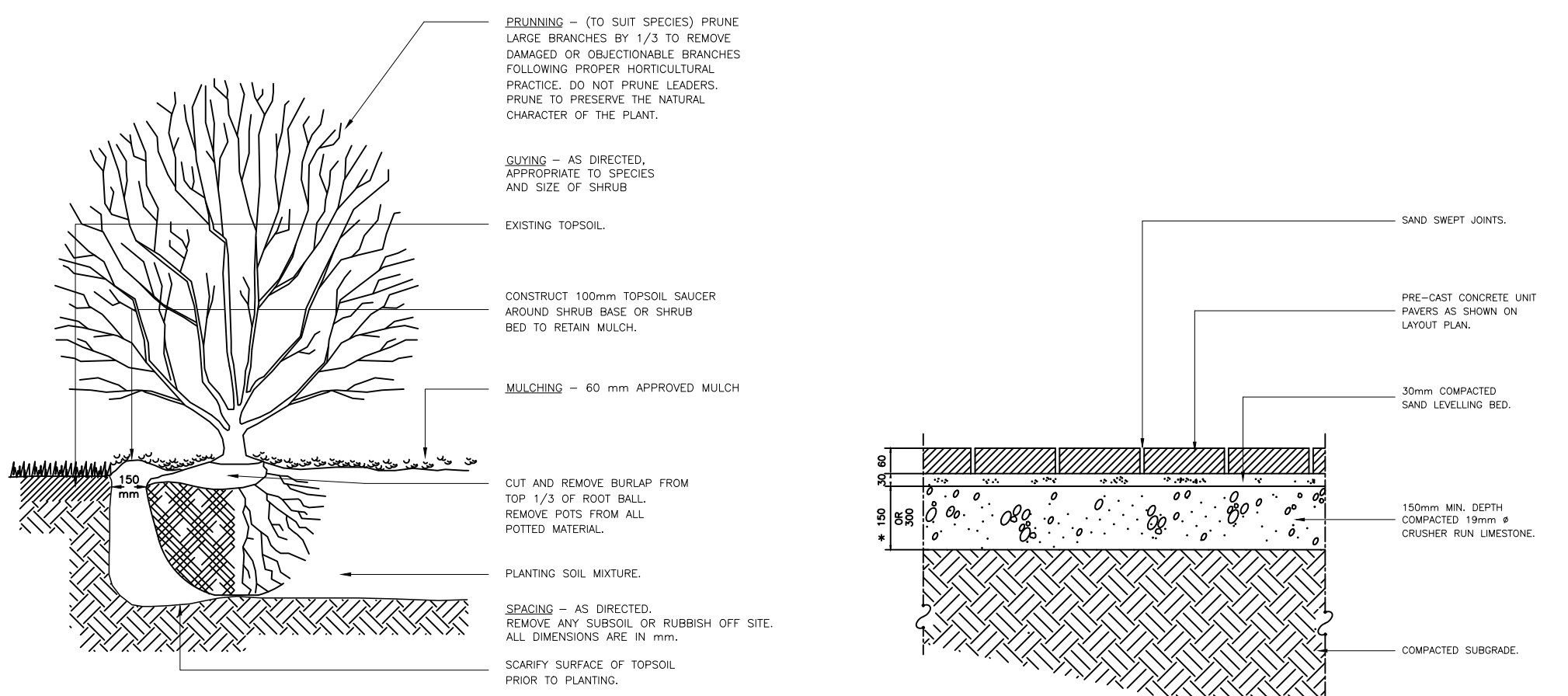


NOTES:
 - TREES UNDER 70mm REQUIRE TWO STAKES, TREES 70mm CALIPER AND OVER REQUIRE THREE STAKES.
 - SET TREE 50mm HIGHER THAN SURROUNDING GRADE TO ALLOW FOR SETTLEMENT.
 - THE ABOVE DETAIL DOES NOT REPRESENT ANY PARTICULAR SPECIES.

NOTES:
 - TREES UNDER 1800mm REQUIRE TWO STAKES, TREES OVER 1800mm REQUIRE THREE STAKES.
 - SET TREE 50mm HIGHER THAN SURROUNDING GRADE TO ALLOW FOR SETTLEMENT.
 - THE ABOVE DETAIL DOES NOT REPRESENT ANY PARTICULAR SPECIES.

DECIDUOUS TREE PLANTING DETAIL NO. 1

CONIFEROUS TREE PLANTING DETAIL NO. 2

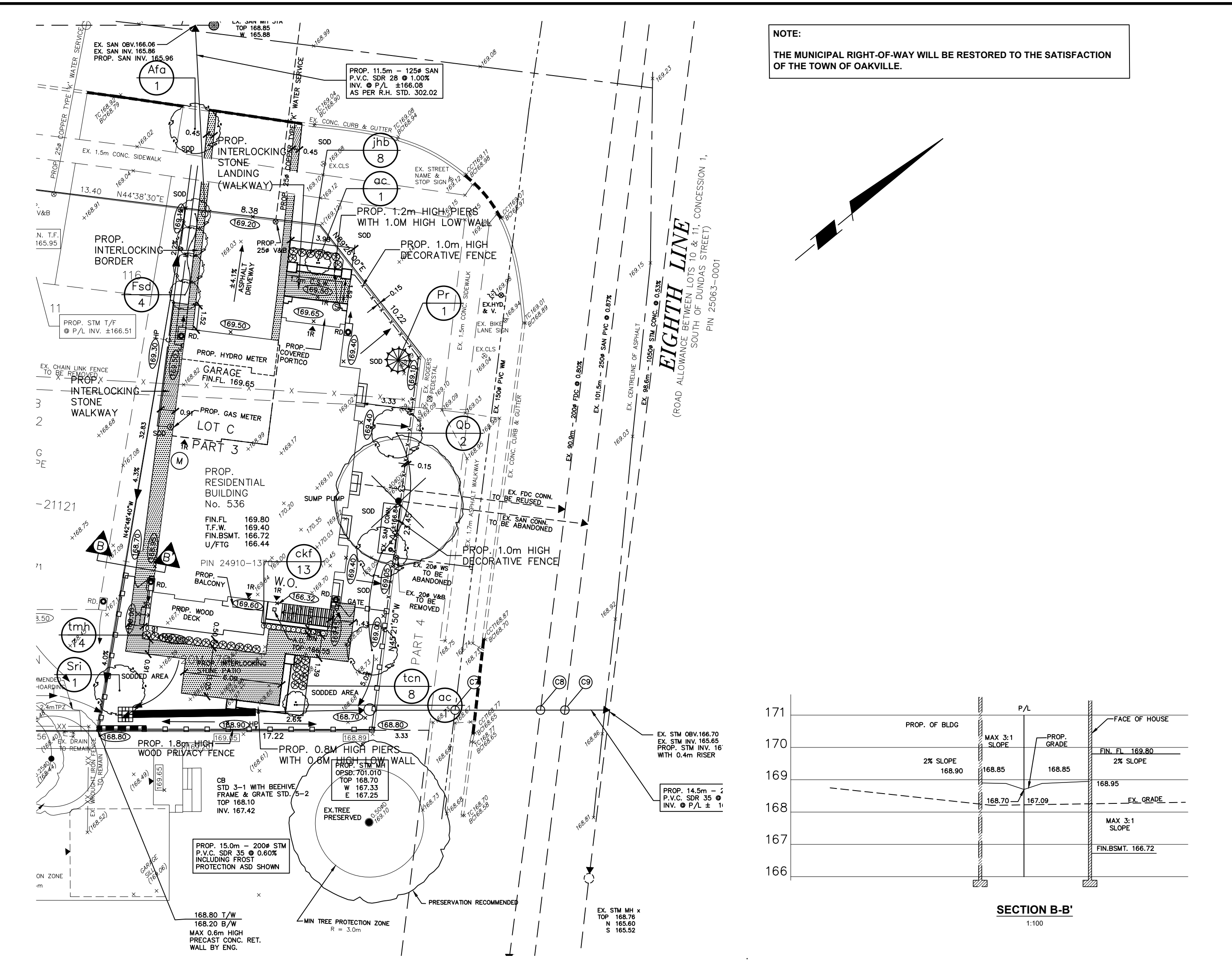


NOTES:
 - PLANTING METHOD ILLUSTRATED, SHALL APPLY EQUALLY TO BARE ROOT STOCK AND BALLED STOCK.
 - SET SHRUBS 50 mm HIGHER THAN SURROUNDING GRADE TO ALLOW FOR SETTLEMENT.
 - SHRUBS PLANTED IN GROUPS SHALL BE SET IN CONTIGUOUS BEDS.
 - THE ABOVE DETAIL DOES NOT REPRESENT ANY PARTICULAR SPECIES.

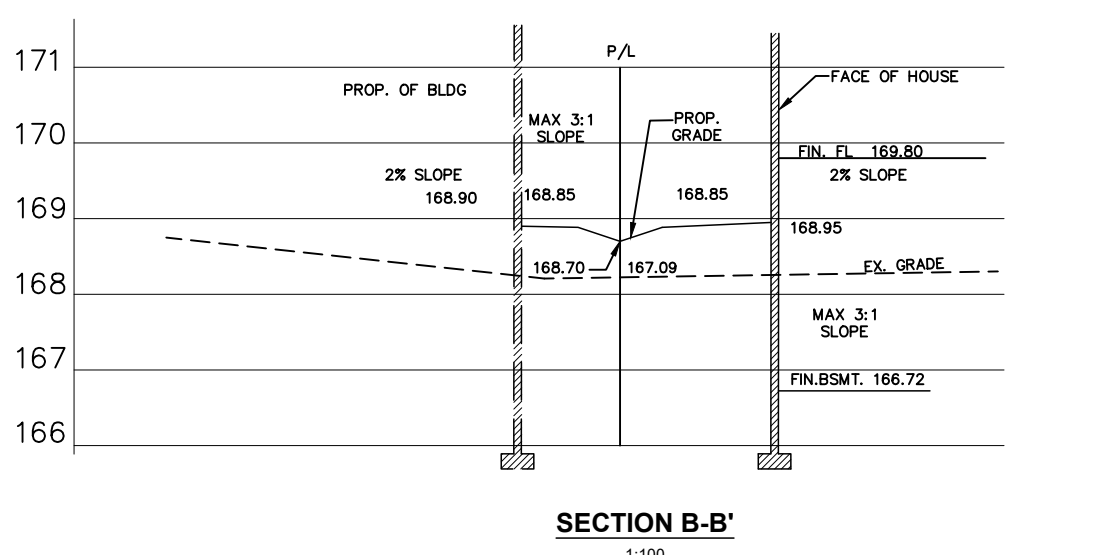
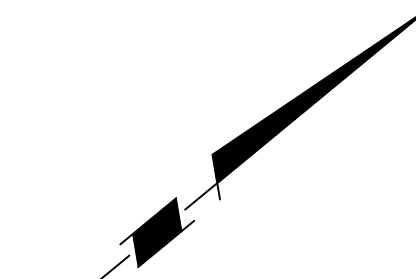
NOTES:
 - SUBGRADE AND GRANULAR COMPACTION TO CONFORM WITH OPSS FORM 501.
 - PRECAST CONCRETE UNIT PAVERS TO BE UNLOCK PRODUCT OR APPROVED EQUAL.
 - CRUSHER RUN LIMESTONE TO CONFORM WITH OPSS FORM 1010 GRADATION FOR GRANULAR 'A'.

SHRUB PLANTING DETAIL NO. 3

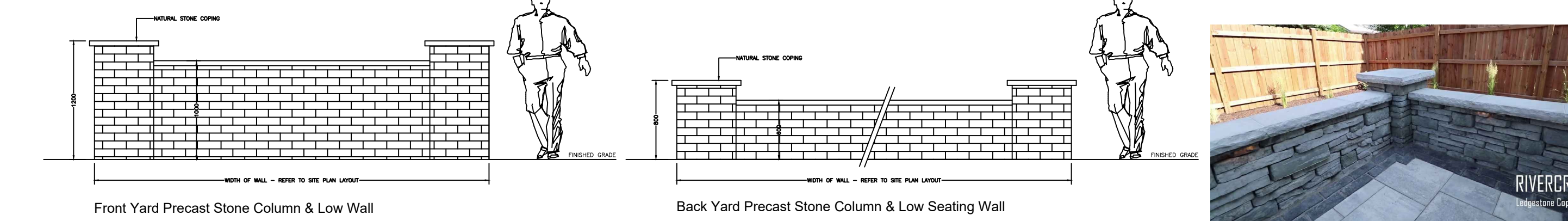
INTERLOCKING STONE PAVERS DETAIL NO. 4



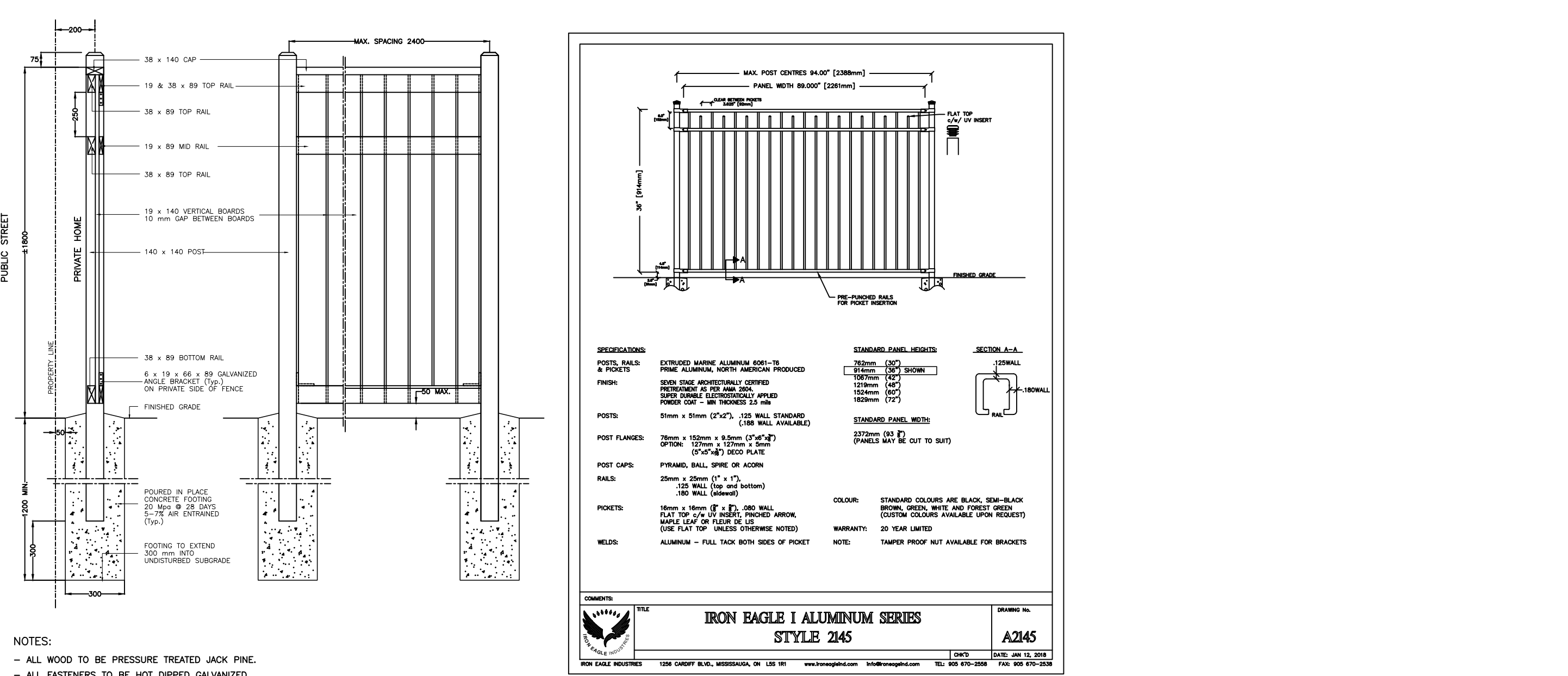
NOTE:
 THE MUNICIPAL RIGHT-OF-WAY WILL BE RESTORED TO THE SATISFACTION OF THE TOWN OF OAKVILLE.



LANDSCAPE SITE PLAN

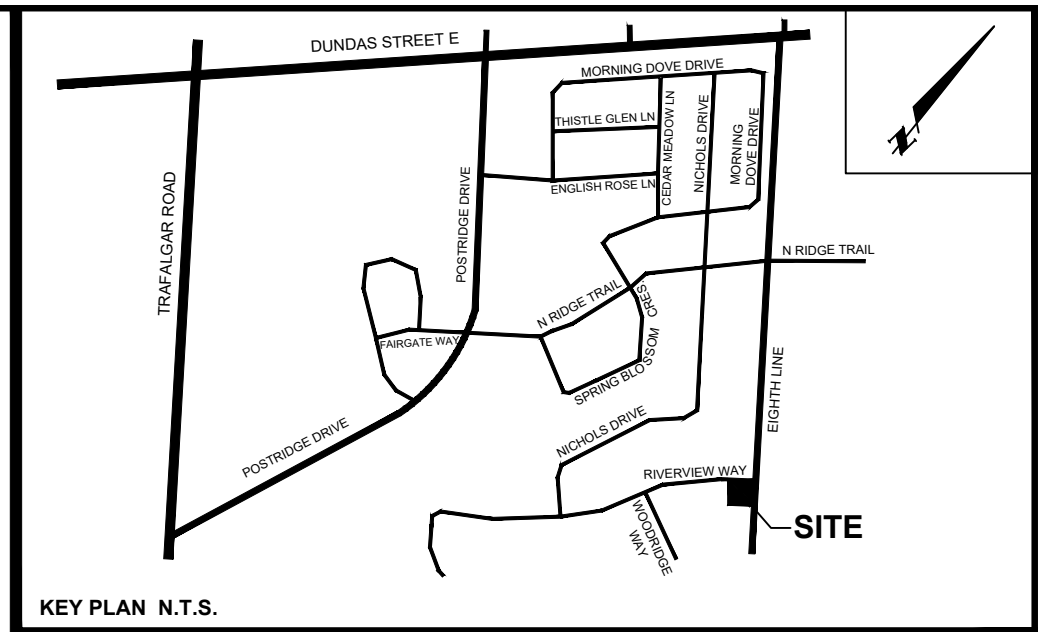


FRONT & BACK YARD PIERS & WALLS DETAIL NO. 7

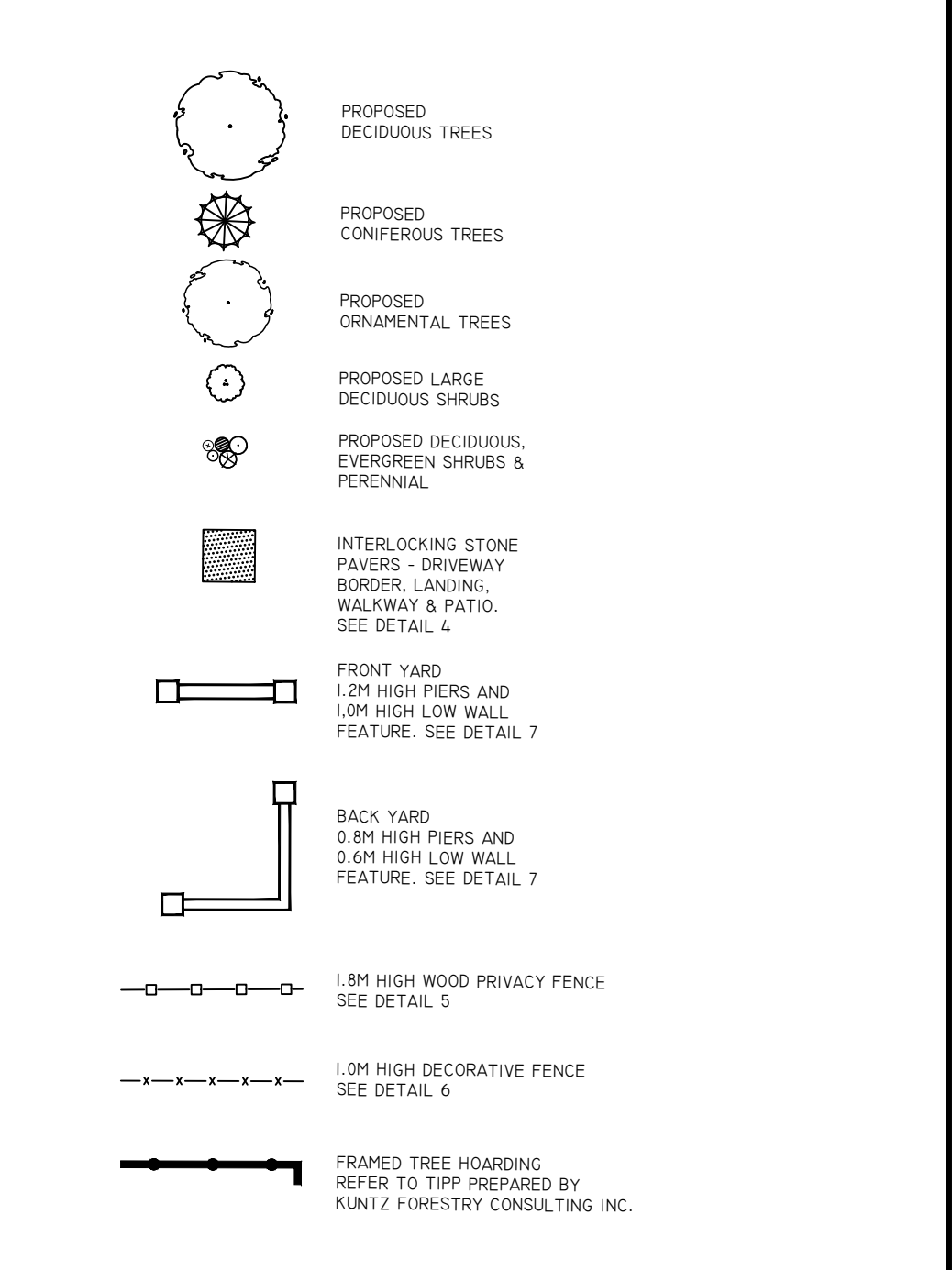


1.8M HT. WOOD PRIVACY FENCE DETAIL NO. 5

1.0M HT. DECORATIVE METAL FENCE DETAIL NO. 6



LEGEND



NOTE:
 FOR ADDITIONAL INFORMATION, DETAILS, DIMENSIONS AND CONFORMITY TO THE SITE PLAN, THE CONTRACTOR MUST REFER TO THE ARCHITECTURAL SITE PLAN PREPARED BY: VERUS DESIGN
 FOR GRADING INFORMATION, SERVICING & UTILITIES, THE CONTRACTOR MUST REFER TO GRADING PLAN PREPARED BY: SKIRA ASSOCIATES LTD.

No.	DATE	REVISION	INIT.
3	AUG. 15/22	2ND SUBMISSION TO TOWN	P.H.
2	MAR. 10/22	FIRST SUBMISSION TO TOWN	P.H.
1	FEB. 28/22	ISSUED TO ARCH & ARBORIST FOR REVIEW	P.H.

TODESIGN landscape designer
 34 Sequoia Drive, Markham, Ontario L6C 3J1
 416 993 1968

PROPOSED RESIDENTIAL BUILDINGS
 PART OF BLOCK 116, REGISTERED PLAN 20M-706, AND PART OF LOT 11, CONCESSION 1, SOUTH OF DUNDAS STREET

2358 EIGHTH LINE

MEADOWRIDGE DEVELOPERS INC.
 13182 BRITANNIA ROAD, MILTON, ONTARIO L9E 0V5 TEL. (647) 533-8780

TOWN OF OAKVILLE

LANDSCAPE PLAN FOR LOT C

DATE: FEBRUARY 2022 AREA: OAKVILLE REGION FILE:
 SCALE: 1:200 DRAWN BY: P.H. DWG.No. **LP-01**