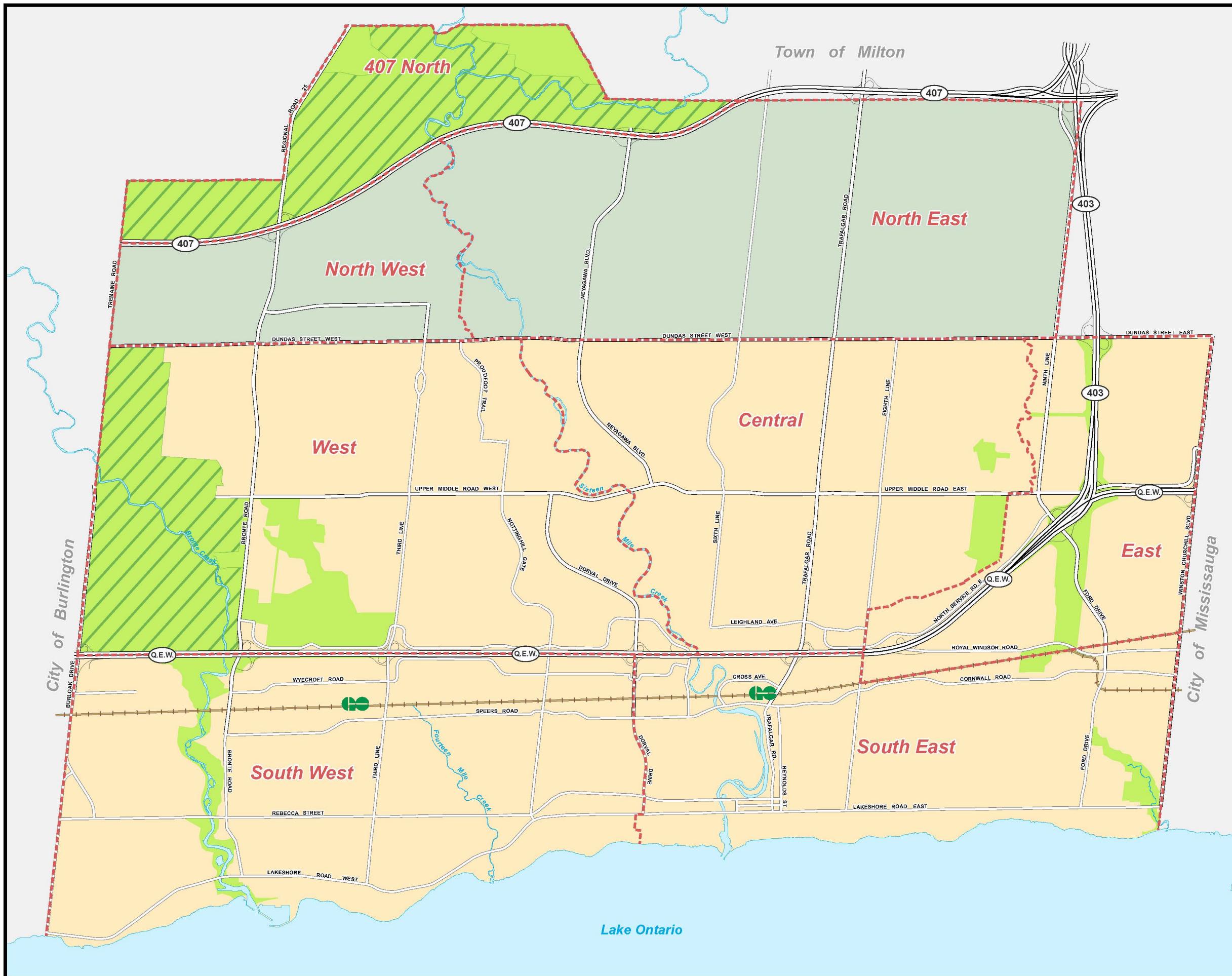



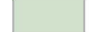



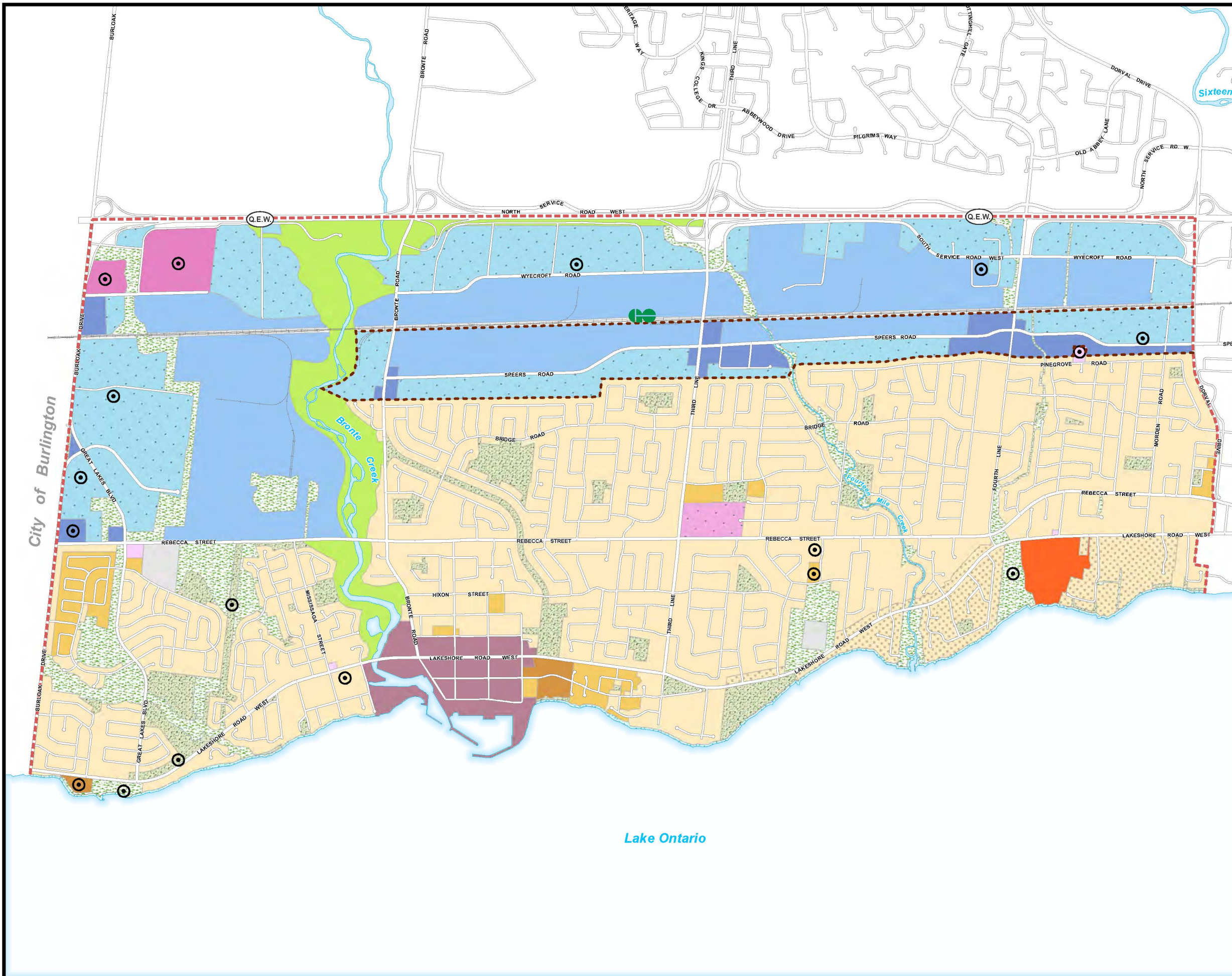
SCHEDULE E LAND USE SCHEDULE BOUNDARIES



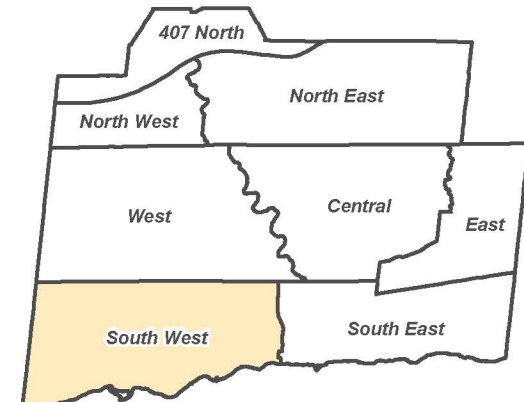
-  SCHEDULE AREA BOUNDARY
-  PARKWAY BELT
-  GREENBELT
-  LANDS NOT SUBJECT TO THE POLICIES OF THIS PLAN
-  RAILWAY LINE



1:50,000
August 31, 2021



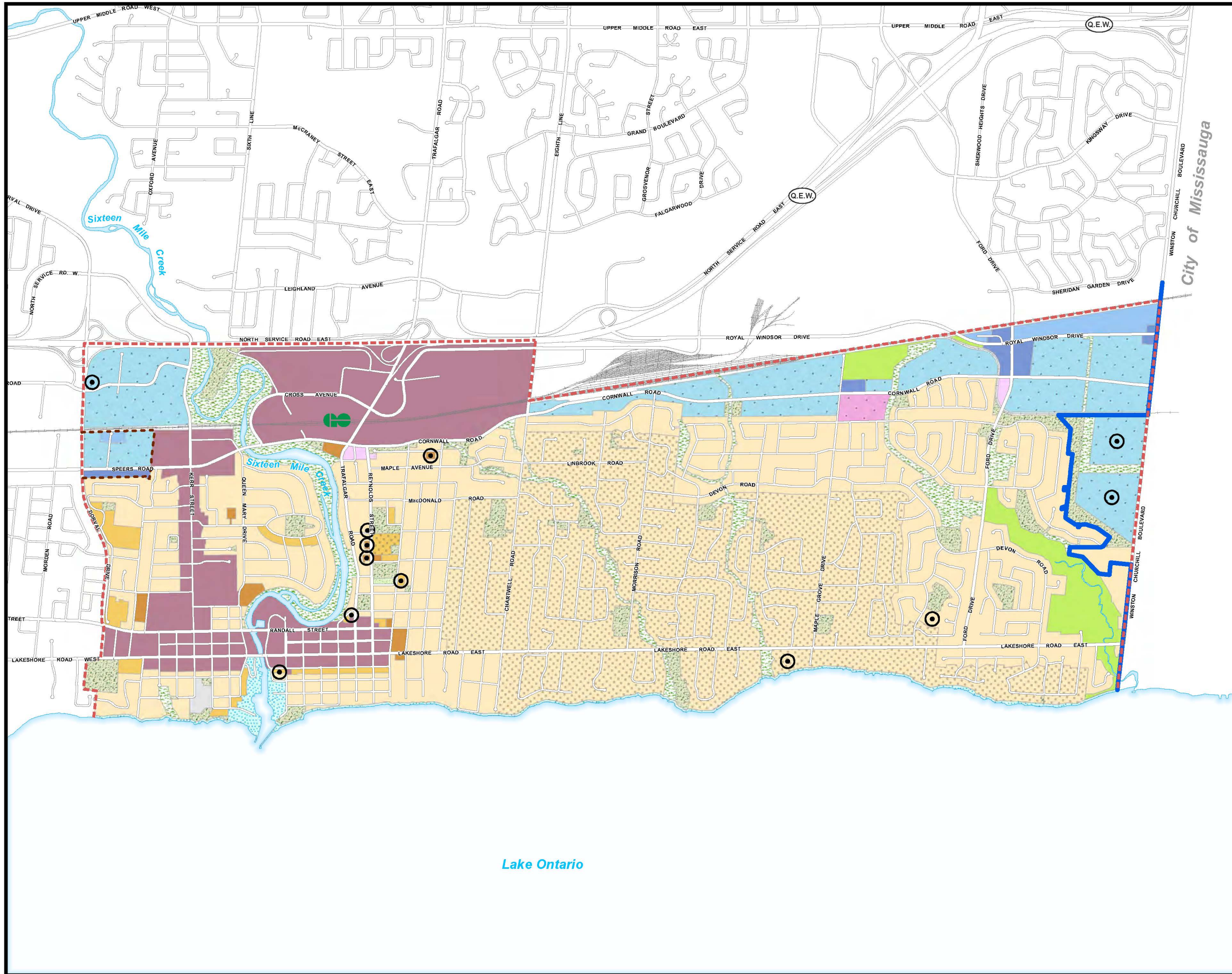
SCHEDULE F SOUTH WEST LAND USE



- SCHEDULE AREA BOUNDARY
 - LOW DENSITY RESIDENTIAL
 - MEDIUM DENSITY RESIDENTIAL
 - HIGH DENSITY RESIDENTIAL
 - NEIGHBOURHOOD COMMERCIAL
 - COMMUNITY COMMERCIAL
 - CORE COMMERCIAL
 - BUSINESS EMPLOYMENT
 - INDUSTRIAL
 - BUSINESS COMMERCIAL
 - INSTITUTIONAL
 - NATURAL AREA
 - PARKWAY BELT
 - PARKS AND OPEN SPACE
 - WATERFRONT OPEN SPACE
 - UTILITY
 - GROWTH AREA *
 - SPECIAL POLICY AREA
 - SPECIAL POLICY AREA - SPEERS ROAD CORRIDOR
 - RAILWAY
 - MAJOR TRANSIT STATION
- * Refer to Part E, Growth Area Policies
 ⊙ Refer to Part E, Exceptions



1:25,000
August 31, 2021



SCHEDULE G SOUTH EAST LAND USE

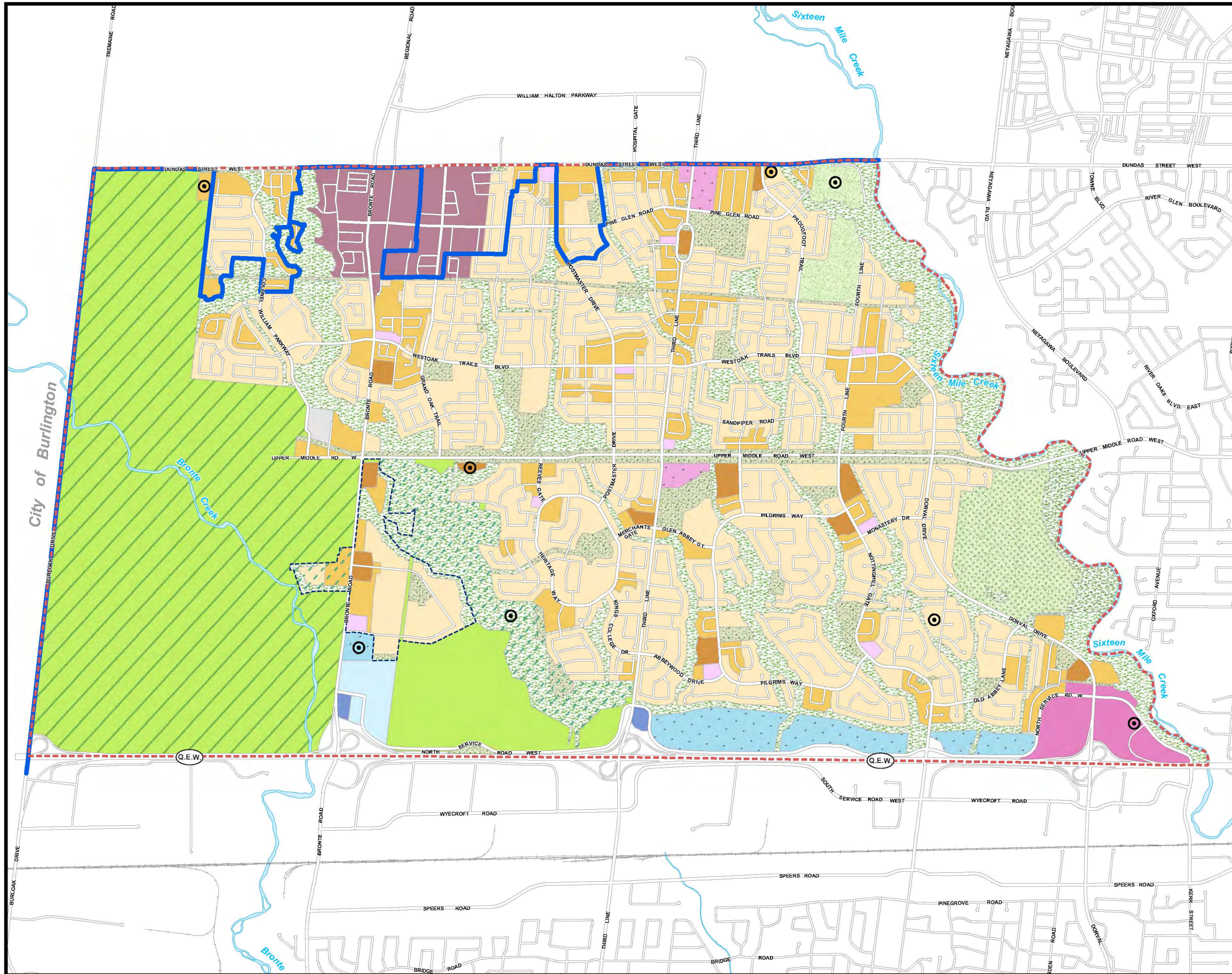


- BUILT BOUNDARY
- SCHEDULE AREA BOUNDARY
- LOW DENSITY RESIDENTIAL
- MEDIUM DENSITY RESIDENTIAL
- HIGH DENSITY RESIDENTIAL
- NEIGHBOURHOOD COMMERCIAL
- COMMUNITY COMMERCIAL
- CENTRAL BUSINESS DISTRICT
- BUSINESS EMPLOYMENT
- INDUSTRIAL
- BUSINESS COMMERCIAL
- INSTITUTIONAL
- NATURAL AREA
- PARKWAY BELT
- PARKS AND OPEN SPACE
- PRIVATE OPEN SPACE
- WATERFRONT OPEN SPACE
- UTILITY
- GROWTH AREA*
- SPECIAL POLICY AREA
- SPECIAL POLICY AREA - SPEERS ROAD CORRIDOR
- RAILWAY

* Refer to Part E, Growth Area Policies
 ⊙ Refer to Part E, Exceptions



1:25,000
 August 31, 2021



SCHEDULE H WEST LAND USE

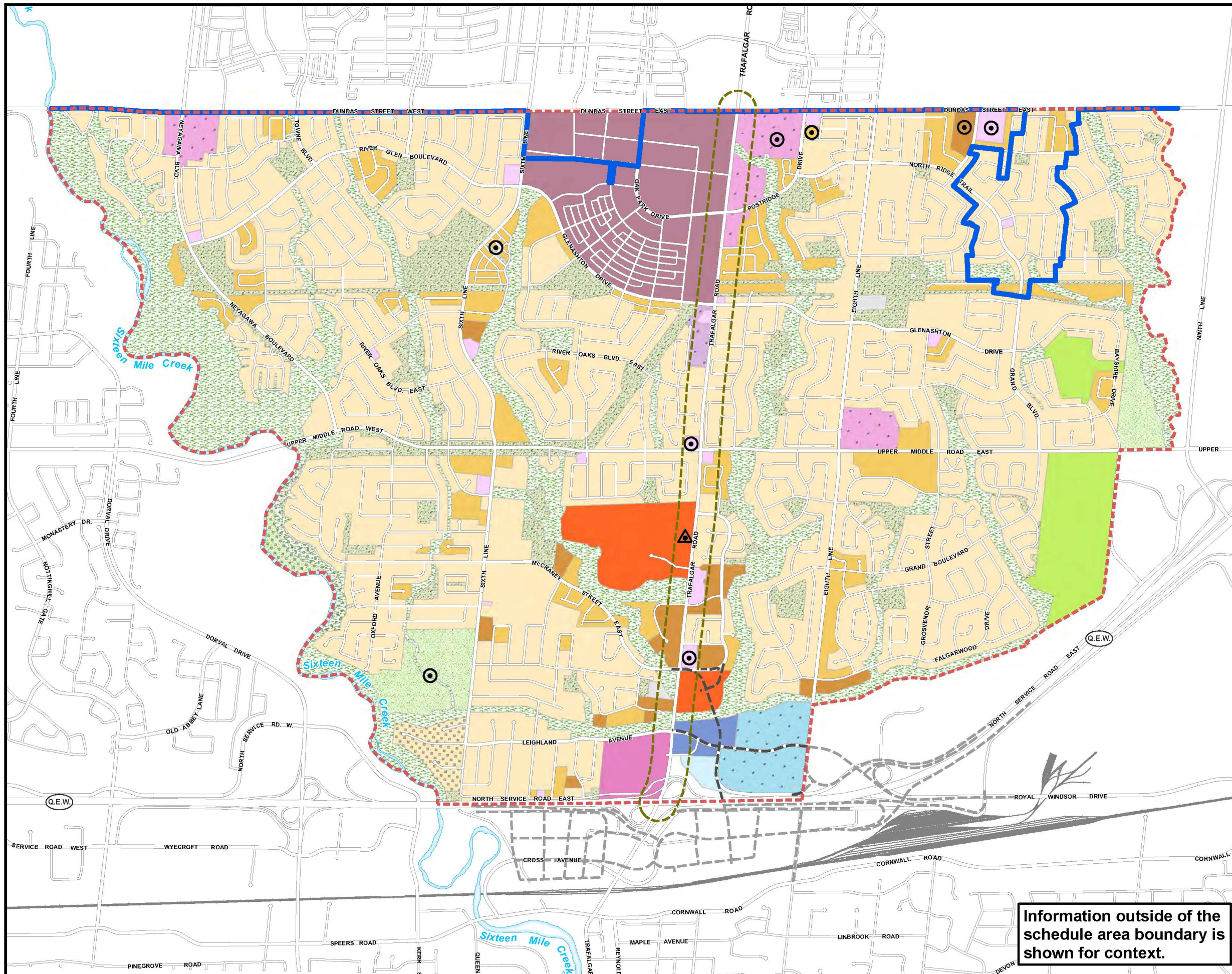
- BUILT BOUNDARY
- SCHEDULE AREA BOUNDARY
- LOW DENSITY RESIDENTIAL
- MEDIUM DENSITY RESIDENTIAL
- HIGH DENSITY RESIDENTIAL
- NEIGHBOURHOOD COMMERCIAL
- COMMUNITY COMMERCIAL
- CORE COMMERCIAL
- OFFICE EMPLOYMENT
- BUSINESS EMPLOYMENT
- BUSINESS COMMERCIAL
- NATURAL AREA
- PARKWAY BELT
- PARKWAY BELT - OVERLAY
- PARKS AND OPEN SPACE
- PRIVATE OPEN SPACE
- UTILITY
- GROWTH AREA*
- GREENBELT**
- SPECIAL POLICY AREA
- RAILWAY

* Refer to Part E, Growth Area Policies
 ** Refer to Part E, Special Policy Areas

Refer to Part E, Exceptions

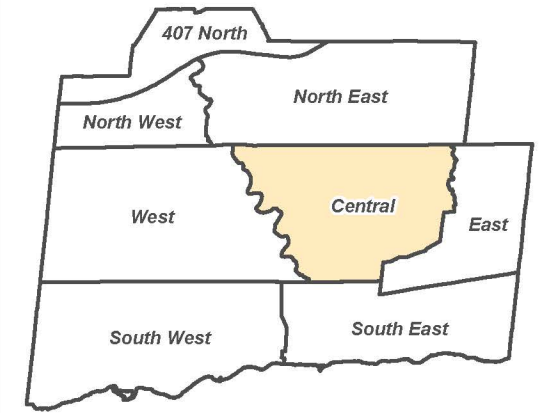
1:26,000
 August 31, 2021

S:\DEPARTMENT\PLANNING\GIS DATA DEVELOPMENT\OFFICIAL PLAN\OP2008\LIVABLE OAKVILLE MXD...SCHEDULE H.mxd



Information outside of the schedule area boundary is shown for context.

SCHEDULE I CENTRAL LAND USE

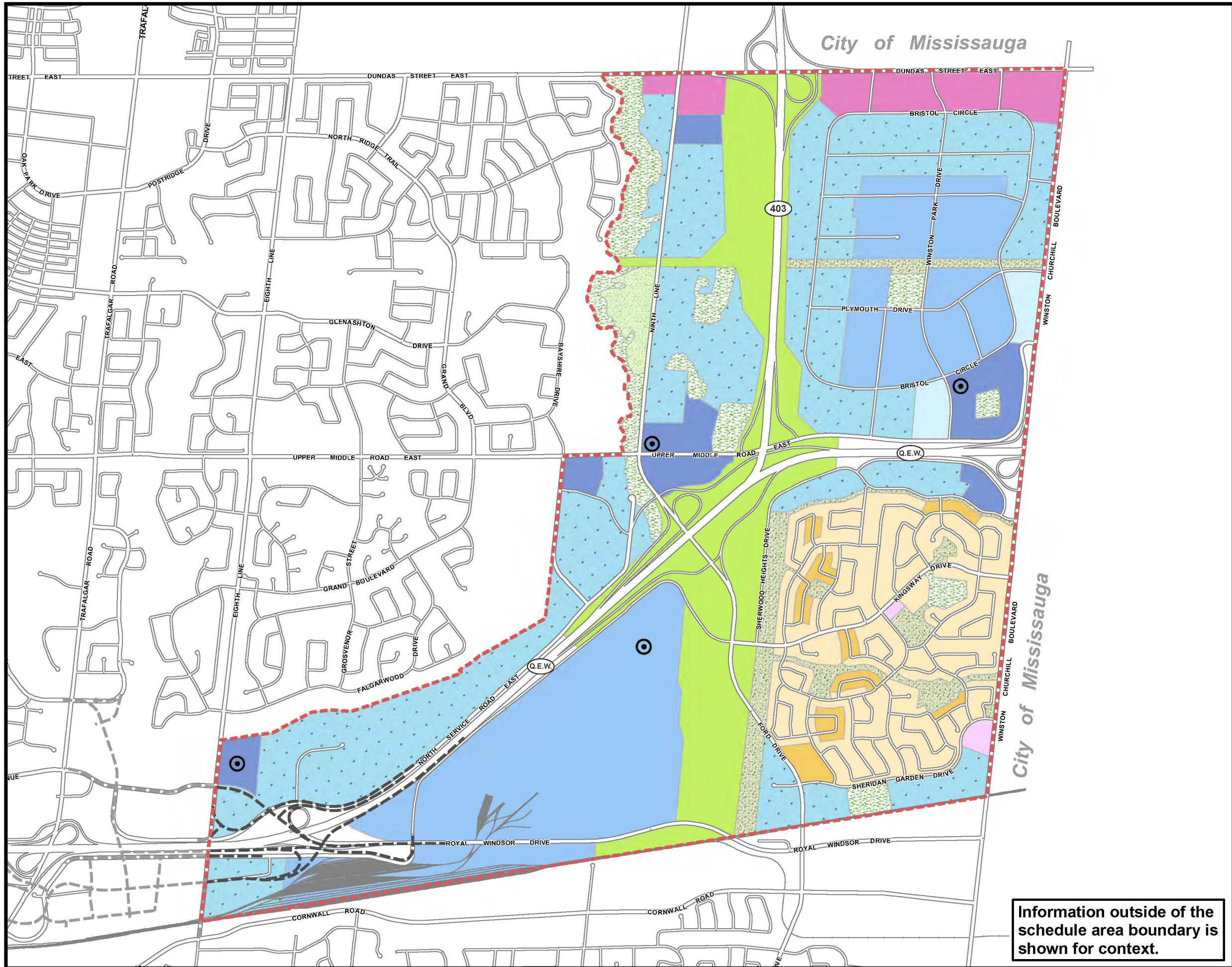


- BUILT BOUNDARY
- SCHEDULE AREA BOUNDARY
- LOW DENSITY RESIDENTIAL
- MEDIUM DENSITY RESIDENTIAL
- HIGH DENSITY RESIDENTIAL
- NEIGHBOURHOOD COMMERCIAL
- CORE COMMERCIAL
- MAIN STREET 2
- OFFICE EMPLOYMENT
- BUSINESS EMPLOYMENT
- BUSINESS COMMERCIAL
- INSTITUTIONAL
- NATURAL AREA
- PARKWAY BELT
- PARKS AND OPEN SPACE
- PRIVATE OPEN SPACE
- UTILITY
- GROWTH AREA *
- SPECIAL POLICY AREA
- SPECIAL POLICY AREA - TRAFALGAR ROAD CORRIDOR
- FUTURE ROADS

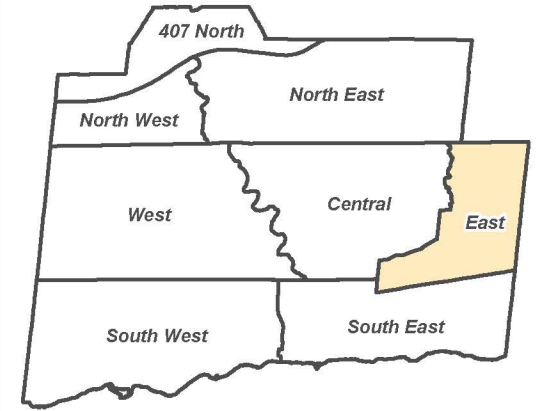
* Refer to Part E, Growth Area Policies
 ○ Refer to Part E, Exceptions
 ▲ Refer to Part E, Trafalgar Road Corridor



1:22,500
August 31, 2021



SCHEDULE J EAST LAND USE



- SCHEDULE AREA BOUNDARY
- LOW DENSITY RESIDENTIAL
- MEDIUM DENSITY RESIDENTIAL
- NEIGHBOURHOOD COMMERCIAL
- CORE COMMERCIAL
- OFFICE EMPLOYMENT
- BUSINESS EMPLOYMENT
- INDUSTRIAL
- BUSINESS COMMERCIAL
- NATURAL AREA
- PARKWAY BELT
- PARKS AND OPEN SPACE
- PRIVATE OPEN SPACE
- FUTURE ROADS
- RAILWAY

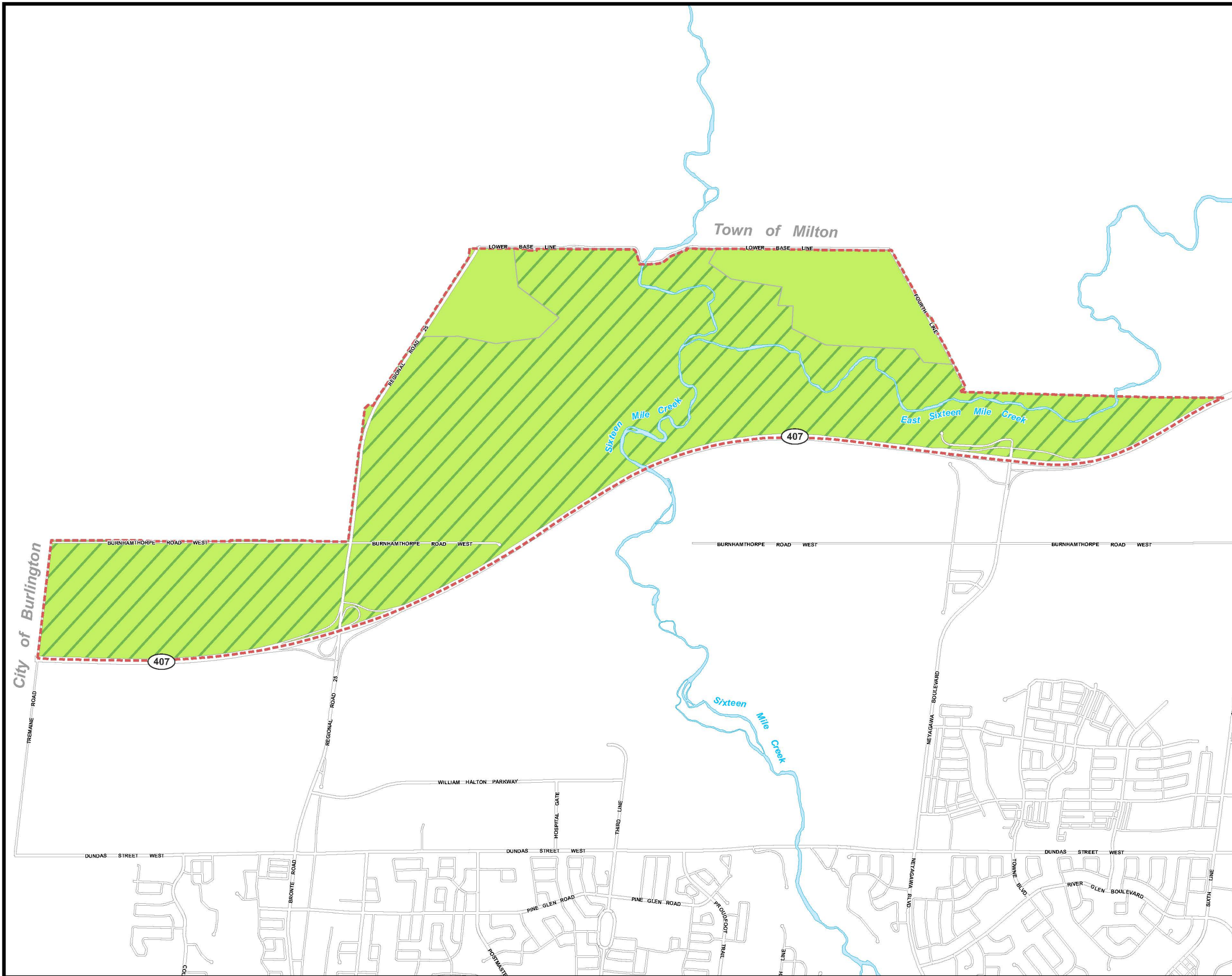
Refer to Part E, Exceptions



1:20,000




August 31, 2021

Information outside of the
schedule area boundary is
shown for context.



SCHEDULE K 407 NORTH LAND USE



-  SCHEDULE AREA BOUNDARY
-  PARKWAY BELT
-  GREENBELT*

*Refer to Part E, Special Policy Areas



1:26,000

August 31, 2021