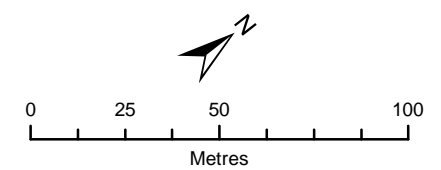


Stonybrook Consulting Inc.  
 David Schaeffer Engineering Ltd.  
 Bird and Hale Limited  
 R.J. Burnside & Associates Limited  
 LGL Limited  
 GEO Morphix Ltd.  
 J.F. Sabourin and Associates Inc.

**Legend**

- Reach Break and ID
- Ground Photo Location and ID (Appendix D)
- Camera Sampling Site
- Mattamy Phase 3 Lands
- Electrofishing Site
- Stream



Imagery: Google Earth Pro: June, 2018. Watercourse: MNRF, 2020.  
 Camera Sampling and Electrofishing Sites, Reach Break and ID: GEO Morphix Ltd., 2019.  
 Ground Photo Location: GEO Morphix Ltd., 2020.  
 Mattamy Phase 3 Lands: Mattamy Corporation, 2019.  
 Print Date: May, 2020. PN19026. Drawn By: A.M.B., W.B., K.W.

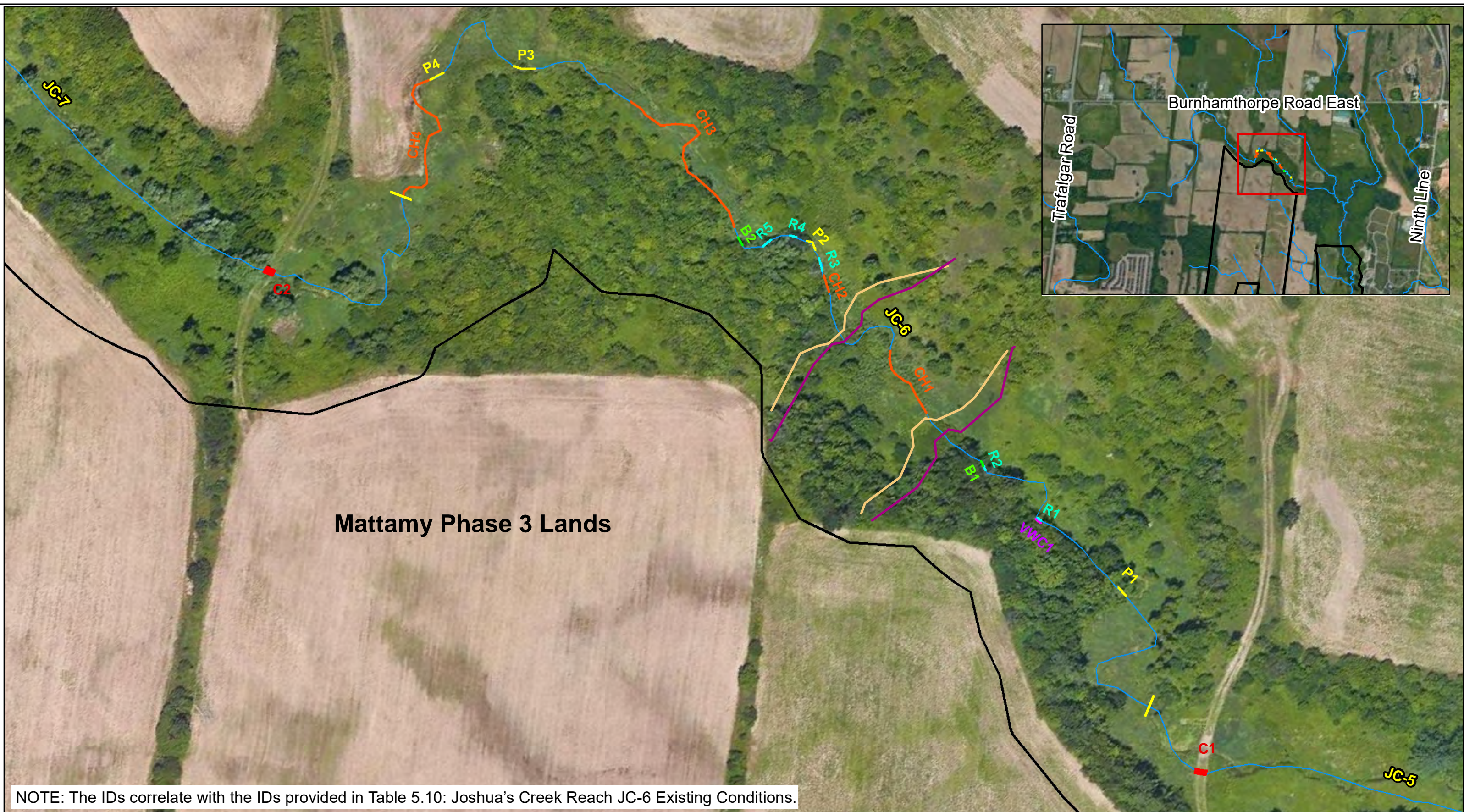
MATTAMY PHASE 3  
 ADDENDUM TO THE JOSHUA'S CREEK  
 TRIBUTARIES EIR/FSS

---

Camera and Electrofishing Sampling Sites

---

Figure 5.1C  
 MAY 2020

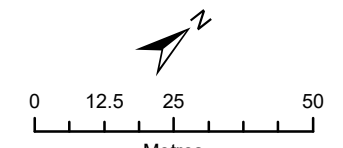


NOTE: The IDs correlate with the IDs provided in Table 5.10: Joshua's Creek Reach JC-6 Existing Conditions.

Stonybrook Consulting Inc.  
 David Schaeffer Engineering Ltd.  
 Bird and Hale Limited  
 R.J. Burnside & Associates Limited  
 LGL Limited  
 GEO Morphix Ltd.  
 J.F. Sabourin and Associates Inc.

**Legend**

- Pool
- Valley Wall Contact
- Riffle
- Bank
- Channel Development
- Old Farm Crossing Location
- Reach Break and ID
- Limit of Disturbance - Crossing Option 1
- Limit of Disturbance - Crossing Option 2
- Mattamy Phase 3 Lands
- Stream



Imagery: Google Earth Pro: June, 2018.  
 Watercourse: MNR and GEO Morphix Ltd., 2020.  
 Reach Break and ID: GEO Morphix Ltd., 2019.  
 Limit of Disturbance: DSEL, 2020.  
 JC-6 Existing Conditions: GEO Morphix Ltd., 2019.  
 Print Date: May 2020. PN19026. Drawn By: W.B., C.H., K.W.

MATTAMY PHASE 3  
 ADDENDUM TO THE JOSHUA'S CREEK  
 TRIBUTARIES EIR/FSS  
 Stream Reach JC-6 Existing Conditions  
 Figure 5.1D  
 MAY 2020