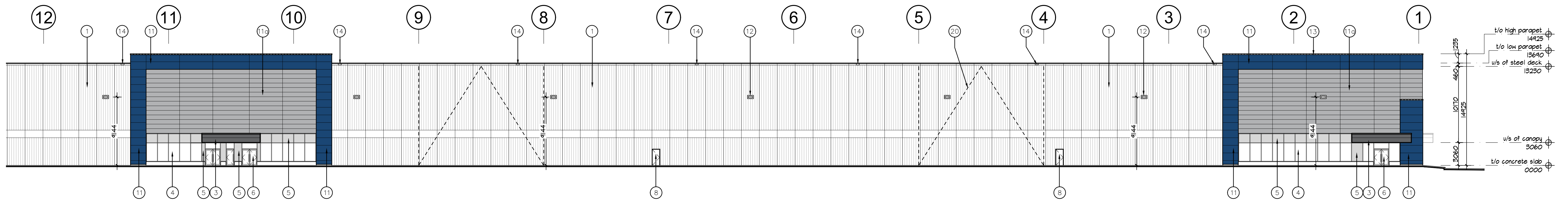
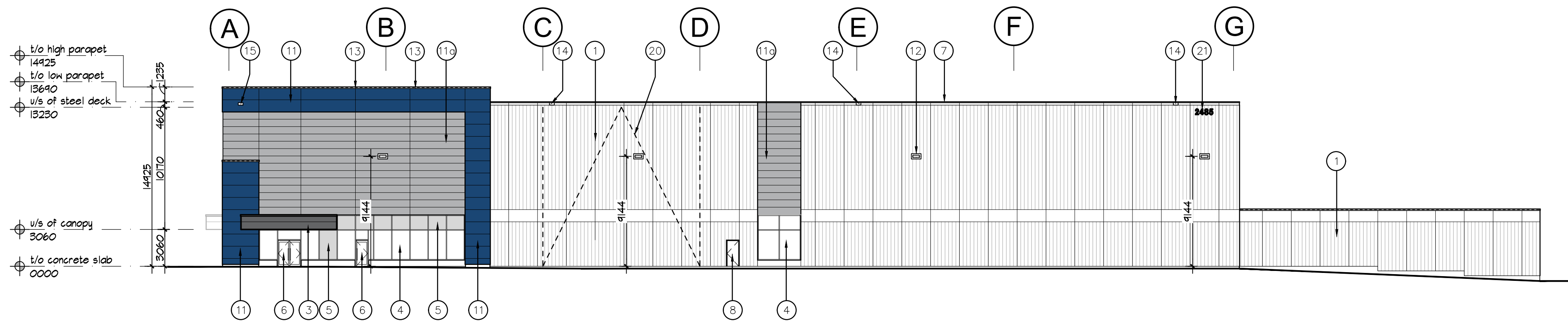


Partial North Elevation at East End



Partial North Elevation at West End



West Elevation

- ① INSULATED PRECAST CONCRETE PANEL W/ RIBBED FINISH. COLOUR TO BE WHITE.
- ② RESERVED.
- ③ PREFINISHED METAL PANEL BY APOLIC OR APPROVED EQUAL, COLOUR TO BE CVG GREY STOCK
- ④ THERMAL GLAZING IN ALUMINUM CURTAIN WALL FRAMES. COLOUR GREY
- ⑤ SPANDREL GLAZING IN ALUMINUM CURTAIN WALL FRAMES. COLOUR GREY
- ⑥ ALUMINUM AND TEMPERED THERMAL GLASS DOOR IN ALUMINUM CURTAIN WALL DOOR FRAMING SYSTEM. COLOUR TO MATCH WINDOW GLAZING SYSTEM.
- ⑦ PRE-FINISHED METAL COPING BY VICWEST OR APPROVED EQUAL. COLOUR TO MATCH MATERIAL BELOW.
- ⑧ INSULATED HOLLOW METAL DOOR IN PRESSED STEEL FRAMES. DOOR AND FRAME PAINTED TO MATCH ADJACENT WALL COLOUR.
- ⑨ INSULATED PREFINISHED STEEL VERTICAL LIFT O/H DOOR COLOUR TO MATCH PRECAST PANELS. C/W VISION PANEL.
- ⑩ INSULATED HOLLOW METAL OVERHEAD DOOR. 4270mm (W) X 4880mm (H). COLOUR TO BE GREY.
- ⑪ PREFINISHED METAL PANEL BY KINGSPAN OR APPROVED EQUAL, COLOUR TO BE TAHOE BLUE
- ⑫ PREFINISHED METAL PANEL BY KINGSPAN OR APPROVED EQUAL, COLOUR TO BE DOVE GRAY.
- ⑬ LIGHTING- WALL PAC, REFER TO ELECTRICAL DWGS.
- ⑭ ROOF TOP UNITS (RTU) TO BE SCREENED FROM PUBLIC VIEW.
- ⑮ SCUPPER. SEE DETAIL 4/A-5.0
- ⑯ SCUPPER. SEE DETAIL ?/A-??
- ⑰ 1200mm x 1200mm PRESSURE RELIEF LOUVRE C/W COUNTER BALANCE DAMPER. SEE MECH. DWGS.
- ⑱ 600mm x 450mm INTAKE AIR LOUVRE. SEE MECH. DWGS.
- ⑲ 600mm x 600mm COMBUSTION AIR LOUVRE. SEE MECH. DWGS.
- ⑳ 1050mm x 1050mm VENTILATION AIR INTAKE LOUVRE. SEE MECH. DWGS.
- ㉑ STRUCTURAL BRACING. SEE STRUCT. DWGS.
- ㉒ MUNICIPAL ADDRESS. 500mm H x 38mm THICK PAINTED BLACK FORMED PLASTIC LETTERS.

P:\P\000 - 2485 Speers Road - Building A - Part 1 - Elevations.dwg, 01 - Current - Drawing Title, A.P. - 0000, A. S. - 0222

| No. | ISSUED | DATE |
|-----|----------------------------|---------------|
| 1 | ISSUED FOR SPA | MAY 18, 2021 |
| 2 | RE-ISSUED FOR SPA | FEB. 2, 2022 |
| 3 | ISSUED FOR STEEL TENDER | MAR. 25, 2022 |
| 4 | RE-ISSUED FOR STEEL TENDER | APR. 22, 2022 |
| 5 | RE-ISSUED FOR STEEL TENDER | MAY 20, 2022 |

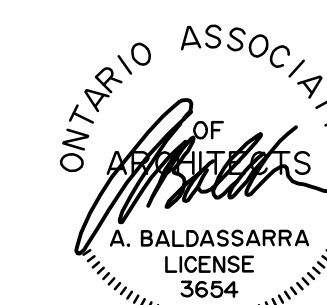
| No. | REVISION | DATE |
|-----|-------------------|---------------|
| 6 | RE-ISSUED FOR SPA | JUN. 30, 2022 |

| No. | REVISION | DATE |
|-----|----------|------|
|-----|----------|------|

BALDASSARRA
Architects Inc.

30 Great Gulf Drive, Unit 20 | Concord ON | L4K 0K7
T. 905.660.0722 | www.baldassarra.ca

OWNERS INFORMATION:



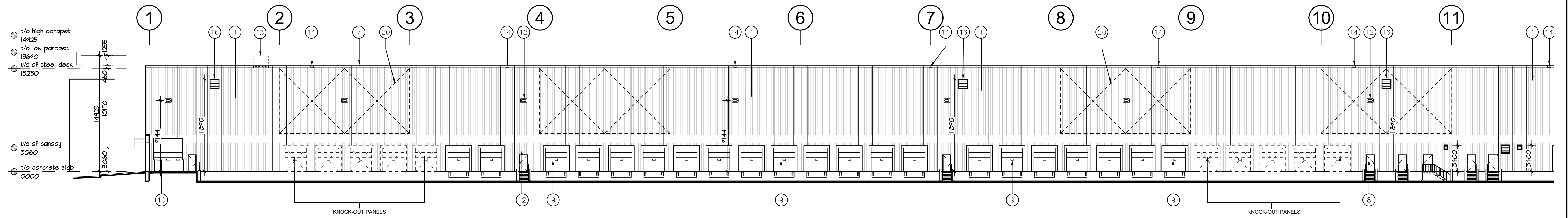
2485 Speers Road

Oakville, Ontario

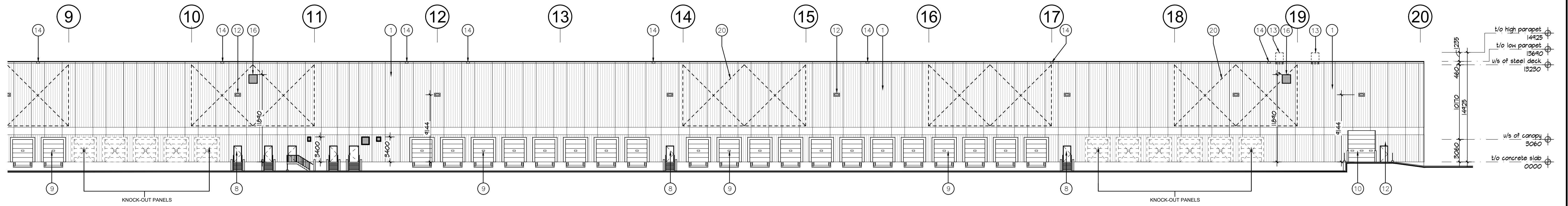
ELEVATIONS
Building A

| DATE: | DRAWN BY: | CHECKED: | SCALE: |
|-----------|-----------|----------|--------|
| APR. 2021 | HP | | 1:250 |

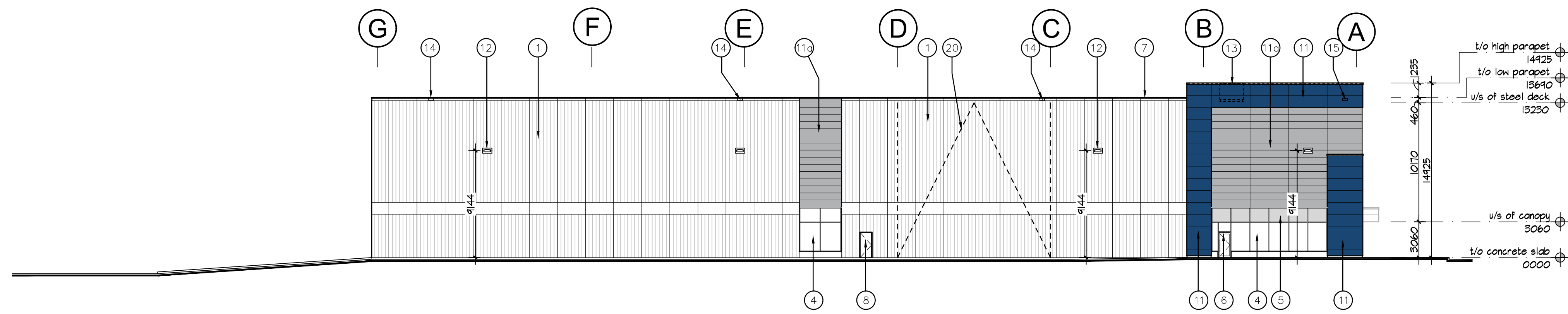
| PROJECT No. | DRAWING No. |
|-------------|-------------|
| 22-02 A | A-3.0 |



Partial South Elevation at West End



Partial South Elevation at East End



East Elevation

- 1 INSULATED PRECAST CONCRETE PANEL W/ RIBBED FINISH. COLOUR TO BE WHITE.
- 2 RESERVED.
- 3 PREFINISHED METAL PANEL BY APOLIC OR APPROVED EQUAL, COLOUR TO BE CVG GREY STOCK
- 4 THERMAL GLAZING IN ALUMINUM CURTAIN WALL FRAMES. COLOUR GREY
- 5 SPANDREL GLAZING IN ALUMINUM CURTAIN WALL FRAMES. COLOUR GREY
- 6 ALUMINUM AND TEMPERED THERMAL GLASS DOOR IN ALUMINUM CURTAIN WALL DOOR FRAMING SYSTEM. COLOUR TO MATCH WINDOW GLAZING SYSTEM.
- 7 PRE-FINISHED METAL COPING BY VICWEST OR APPROVED EQUAL. COLOUR TO MATCH MATERIAL BELOW.
- 8 INSULATED HOLLOW METAL DOOR IN PRESSED STEEL FRAMES. DOOR AND FRAME PAINTED TO MATCH ADJACENT WALL COLOUR.
- 9 INSULATED PREFINISHED STEEL VERTICAL LIFT O/H DOOR COLOUR TO MATCH PRECAST PANELS. C/W VISION PANEL.
- 10 INSULATED HOLLOW METAL OVERHEAD DOOR. 4270mm (W) X 4880mm (H). COLOUR TO BE GREY.
- 11 PREFINISHED METAL PANEL BY KINGSPAN OR APPROVED EQUAL, COLOUR TO BE TAHOE BLUE
- 12 PREFINISHED METAL PANEL BY KINGSPAN OR APPROVED EQUAL, COLOUR TO BE DOVE GRAY.
- 13 LIGHTING - WALL PAC, REFER TO ELECTRICAL DWGS.
- 14 ROOF TOP UNITS (RTU) TO BE SCREENED FROM PUBLIC VIEW.
- 15 SCUPPER. SEE DETAIL 4/A-5.0
- 16 SCUPPER. SEE DETAIL 4/A-?/?
- 17 1200mm x 1200mm PRESSURE RELIEF LOUVRE C/W COUNTER BALANCE DAMPER. SEE MECH. DWGS.
- 18 600mm x 450mm INTAKE AIR LOUVRE. SEE MECH. DWGS.
- 19 600mm x 600mm COMBUSTION AIR LOUVRE. SEE MECH. DWGS.
- 20 1050mm x 1050mm VENTILATION AIR INTAKE LOUVRE. SEE MECH. DWGS.
- 21 STRUCTURAL BRACING. SEE STRUCT. DWGS.
- 22 MUNICIPAL ADDRESS. 500mm H x 38mm THICK PAINTED BLACK FORMED PLASTIC LETTERS.

P:\P\000 - 2485 Speers Road - Building A - Part 1 - Elevations.dwg, Current: D:\Projects\2485 Speers Road - Building A - Part 1 - Elevations.dwg, A.S.P., 2002, A.S.P., 2022

| No. | ISSUED | DATE |
|-----|----------------------------|---------------|
| 1 | ISSUED FOR SPA | MAY 18, 2021 |
| 2 | RE-ISSUED FOR SPA | FEB. 2, 2022 |
| 3 | ISSUED FOR STEEL TENDER | MAR. 25, 2022 |
| 4 | RE-ISSUED FOR STEEL TENDER | APR. 22, 2022 |
| 5 | RE-ISSUED FOR STEEL TENDER | MAY 20, 2022 |

| No. | REVISION | DATE |
|-----|-------------------|---------------|
| 6 | RE-ISSUED FOR SPA | JUN. 30, 2022 |

| No. | REVISION | DATE |
|-----|----------|------|
| | | |

BALDASSARRA
Architects Inc.

30 Great Gulf Drive, Unit 20 | Concord ON | L4K 0K7
T. 905.660.0722 | www.baldassarra.ca

OWNERS INFORMATION:



2485 Speers Road

Oakville, Ontario

ELEVATIONS
Building A

| | | | |
|--------------------|-----------------|----------|--------------------|
| DATE: APR. 2021 | DRAWN BY: HP | CHECKED: | SCALE: AS NOTED |
| PROJECT No. | DRAWING No. | | 22-02 A |

A-3.1