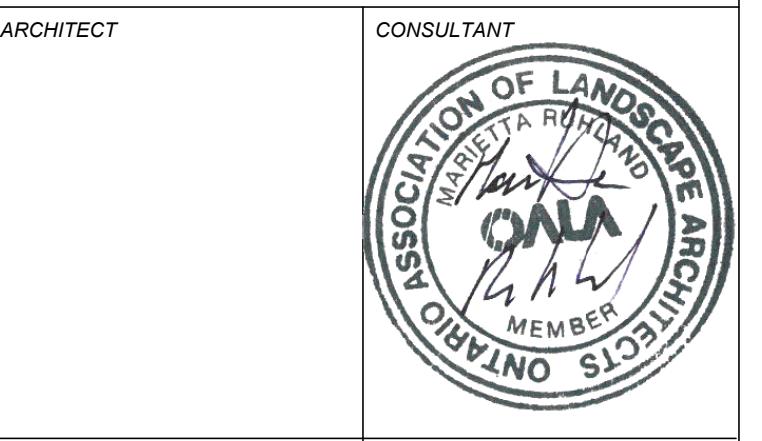


6			
5			
4			
3	Re-issued as per comments	23/08/23	MR
2	Re-issued as per comments	23/03/15	MR
1	Issued for Site Plan submission	22/09/28	HP

DESIGNED BY / CONSULTANT	CHECKED BY / SUPERVISOR
M RUHLAND	M RUHLAND
DRAWN BY / DESIGNER	
H P	

SCALE: FOR FILE
1:300



CONSULTANT	CONSULTANT
------------	------------

PROJECT/LOCATION
VCA/MOVEH
RENOVATION AND
ADDITION
2285 BRISTOL CIRCLE
OAKVILLE, ON

DRAWING
LANDSCAPE PLAN

DATE	SEPT. 2022	SHEET NO.	L-1
PROJECT NO.	22-1695		

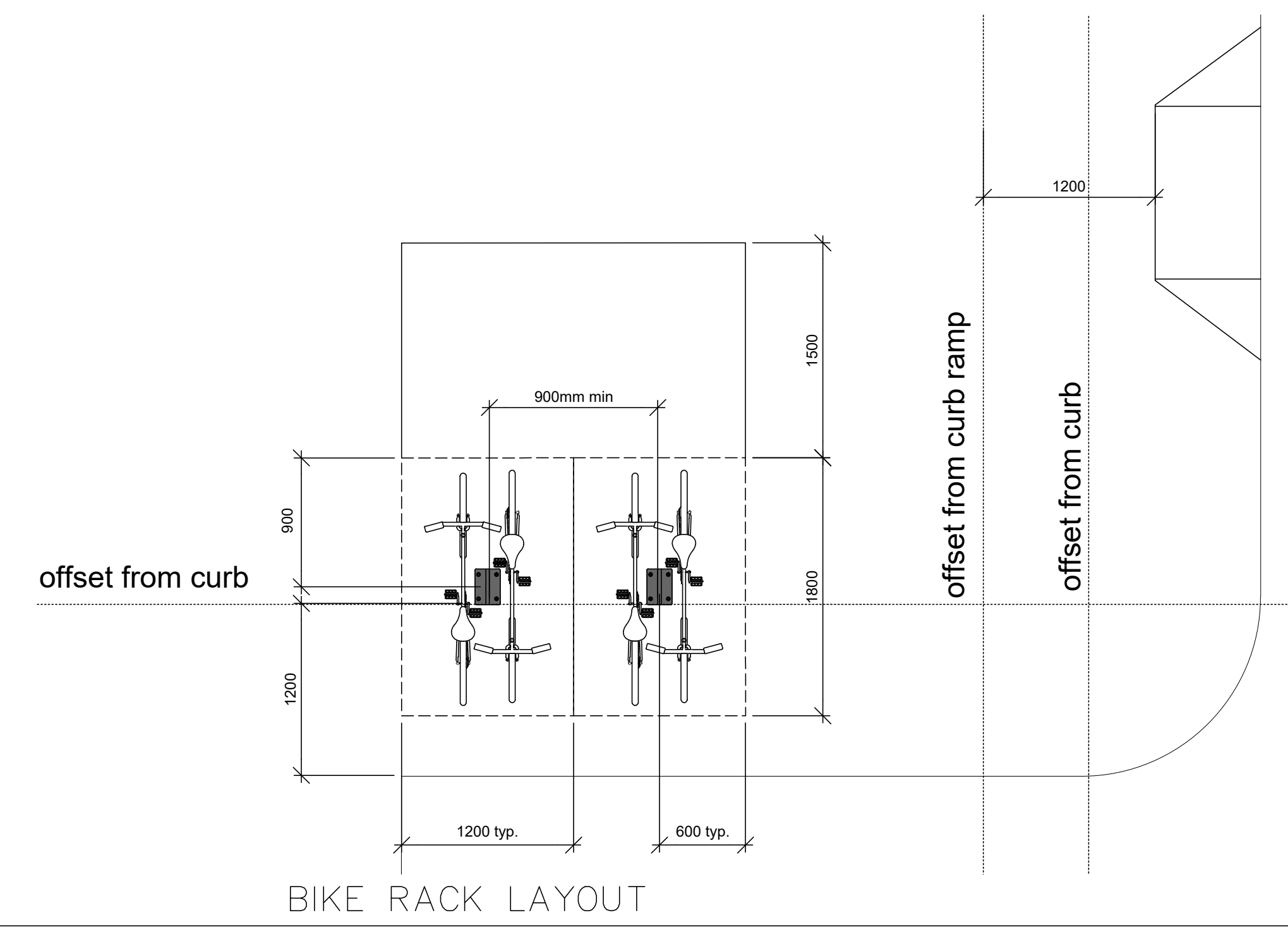
PLANT LIST (MASTER)

DECIDUOUS TREES

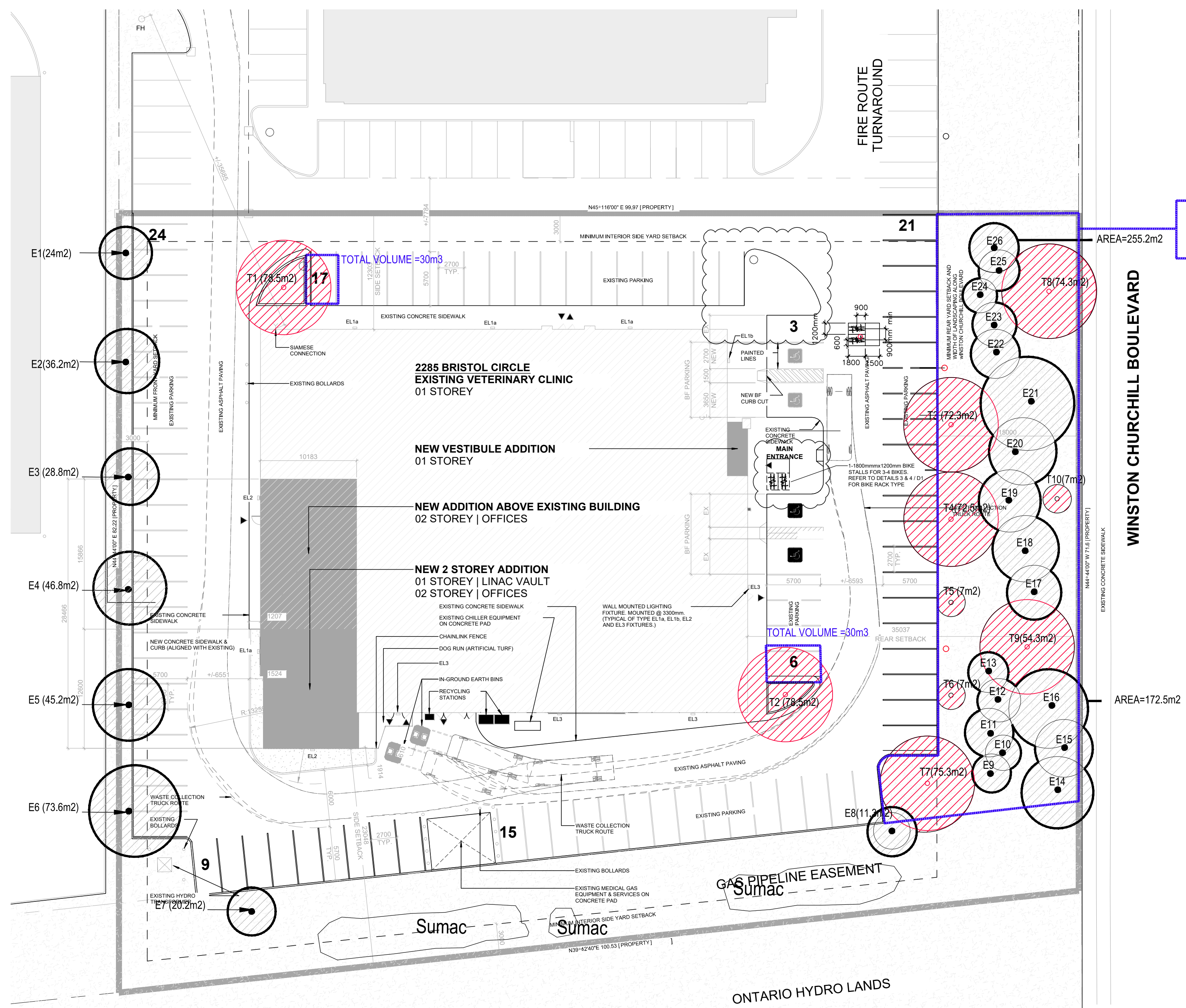
KEY	QTY.	BOTANICAL NAME	COMMON NAME	CAL. (mm)	HT. (cm)	SPREAD (cm)	ROOTS (cm)	REMARKS
GTS	2	<i>Gleditsia triacanthos</i> "Shademaster"	Shademaster Honeylocust	60	-	-	WB	-
AFJ	3	<i>Acer x freemanii</i> "Jeffersred"	Aulorus Blaze Maple	60	-	-	WB	-
SRI	3	<i>Syringa reticulata</i> "Ivory Silk"	Ivory Silk Tree Lilac	60	-	-	WB	-
TCR	2	<i>Tilia cordata</i> "Greenspire"	Greenspire Linden	60	-	-	WB	-

DECIDUOUS SHRUBS

KEY	QTY.	BOTANICAL NAME	COMMON NAME	CAL. (mm)	HT. (cm)	SPREAD (cm)	ROOTS (cm)	REMARKS
Rr	27	<i>Rosa rugosa</i>	Rugosa Rose	-	-	-	3 gal. pot	-



REFER TO ARBORIST REPORT
FOR TREE PROTECTION FENCE
DETAIL AND TREE PROTECTION
ZONES



TOTAL SOIL AREA=990m2
 AT 0.9M DEPTH = TOTAL VOLUME OF 891m3
 TOTAL VOLUME PER TREE (26 TREES)=34.27m3

Proposed Canopy on Site

Tree#	Species	Stature (S/M,L)	Soil volume per Tree (m3)	Canopy Area Sub-total (m2)
T1	Acer x freemanii 'Jeffersred'	M	30	78.5
T2	Acer x freemanii 'Jeffersred'	M	30	78.5
T3	Tilia cordata 'Greenspire'	M	34.27	72.3
T4	Tilia cordata 'Greenspire'	M	34.27	72.5
T5	Syringa reticulata 'Ivory silk'	S	34.27	7
T6	Syringa reticulata 'Ivory silk'	S	34.27	7
T7	Acer x freemanii 'Jeffersred'	M	34.27	75.3
T8	Gleditsia triacanthos 'Shademaster'	M	34.27	74.3
T9	Gleditsia triacanthos 'Shademaster'	M	34.27	54.3
T10	Syringa reticulata 'Ivory silk'	S	34.27	7

Subtotal of proposed canopy 526.7m2

Existing Canopy Canopy on Site

Tree#	Species	Stature	Soil volume per Tree (m3)	Canopy Area (m2)
E1	Gleditsia triacanthos 'Shademaster'	M	30	24
E2	Gleditsia triacanthos 'Shademaster'	M	30	36.2
E3	Gleditsia triacanthos 'Shademaster'	M	30	28.8
E4	Gleditsia triacanthos 'Shademaster'	M	30	46.8
E5	Gleditsia triacanthos 'Shademaster'	M	30	45.2
E6	Gleditsia triacanthos 'Shademaster'	M	30	73.6
E7	Acer platanoides	M	34.27	20.3
E8	Acer platanoides	M	34.27	11.3
E9	Picea glauca	S	34.27	
E10	Picea pungens	S	34.27	
E11	Picea pungens	S	34.27	
E12	Picea pungens	S	34.27	
E13	Picea pungens	S	34.27	172.5
E14	Acer platanoides	M	34.27	
E15	Acer platanoides	M	34.27	
E16	Acer platanoides	M	34.27	
E17	Gleditsia triacanthos 'Shademaster'	M	34.27	
E18	Gleditsia triacanthos 'Shademaster'	M	34.27	
E19	Gleditsia triacanthos 'Shademaster'	M	34.27	
E20	Gleditsia triacanthos 'Shademaster'	M	34.27	
E21	Gleditsia triacanthos 'Shademaster'	M	34.27	255.2
E22	Picea glauca	S	34.27	
E23	Picea glauca	S	34.27	
E24	Picea pungens	S	34.27	
E25	Picea pungens	S	34.27	
E26	Picea pungens	S	34.27	

Subtotal of existing canopy 714m2
 Multiplied by 1.5 1071m2

Total # of trees	Total Canopy Area (m2)
36	1597.7

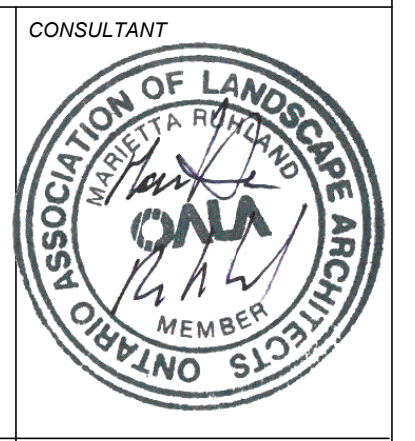
CANOPY SUMMARY

Total Site Area	7,281m2
Site Canopy Cover	21.94%
Canopy Cover Target by land Use	20%

Ruhland & Associates Ltd
 landscape architecture • urban design • site planning
 Ph 613-224-4744 Fx 613-224-4131 info@ral.ca www.ral.ca

6			
5			
4			
3	Re-issued as per comments	23/08/23	MR
2	Re-issued as per comments	23/03/15	HP
1	Issued for Site Plan submission	22/09/28	HP

DESIGNED BY / CONSULTANT: M RUHLAND
 CHECKED BY / SURVEYOR: M RUHLAND
 DRAWN BY / DESIGNER: H P
 SCALE: 1:300

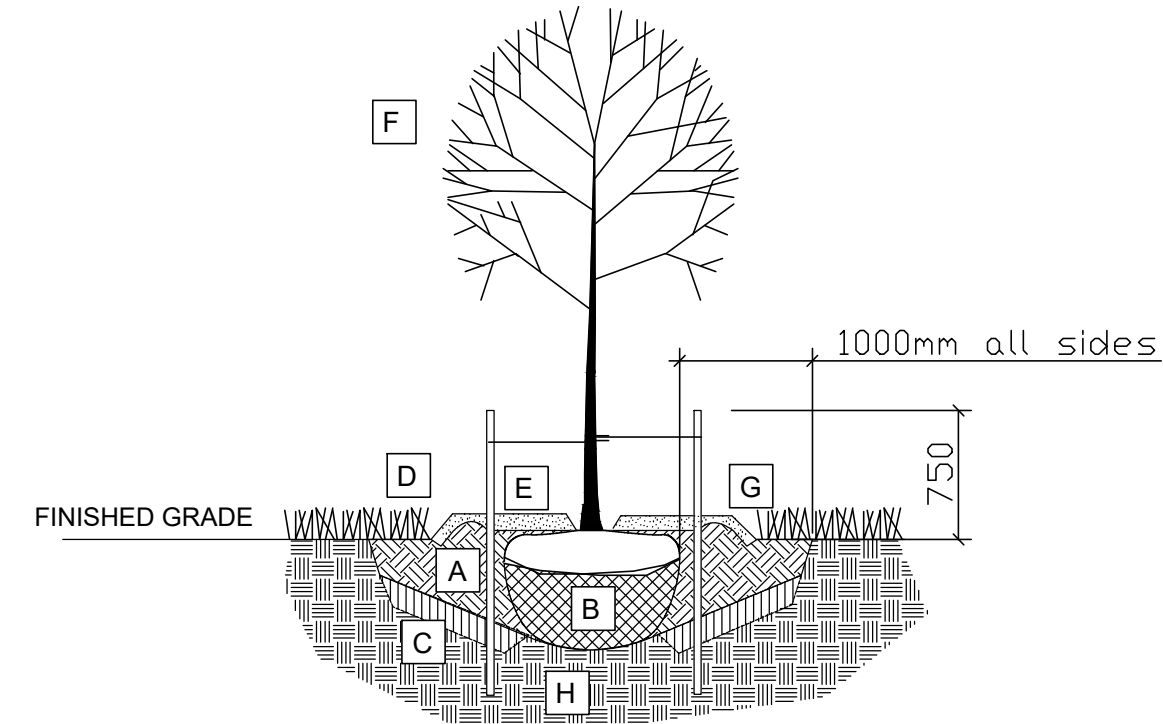


PROJECT / LOCATION
 VCA / MOVEH
 RENOVATION AND
 ADDITION
 2285 BRISTOL CIRCLE
 OAKVILLE, ON

CANOPY COVER PLAN

DATE: SEPT. 2022
 PROJECT NO.: 22-1695
 SHEET NO.: L-2

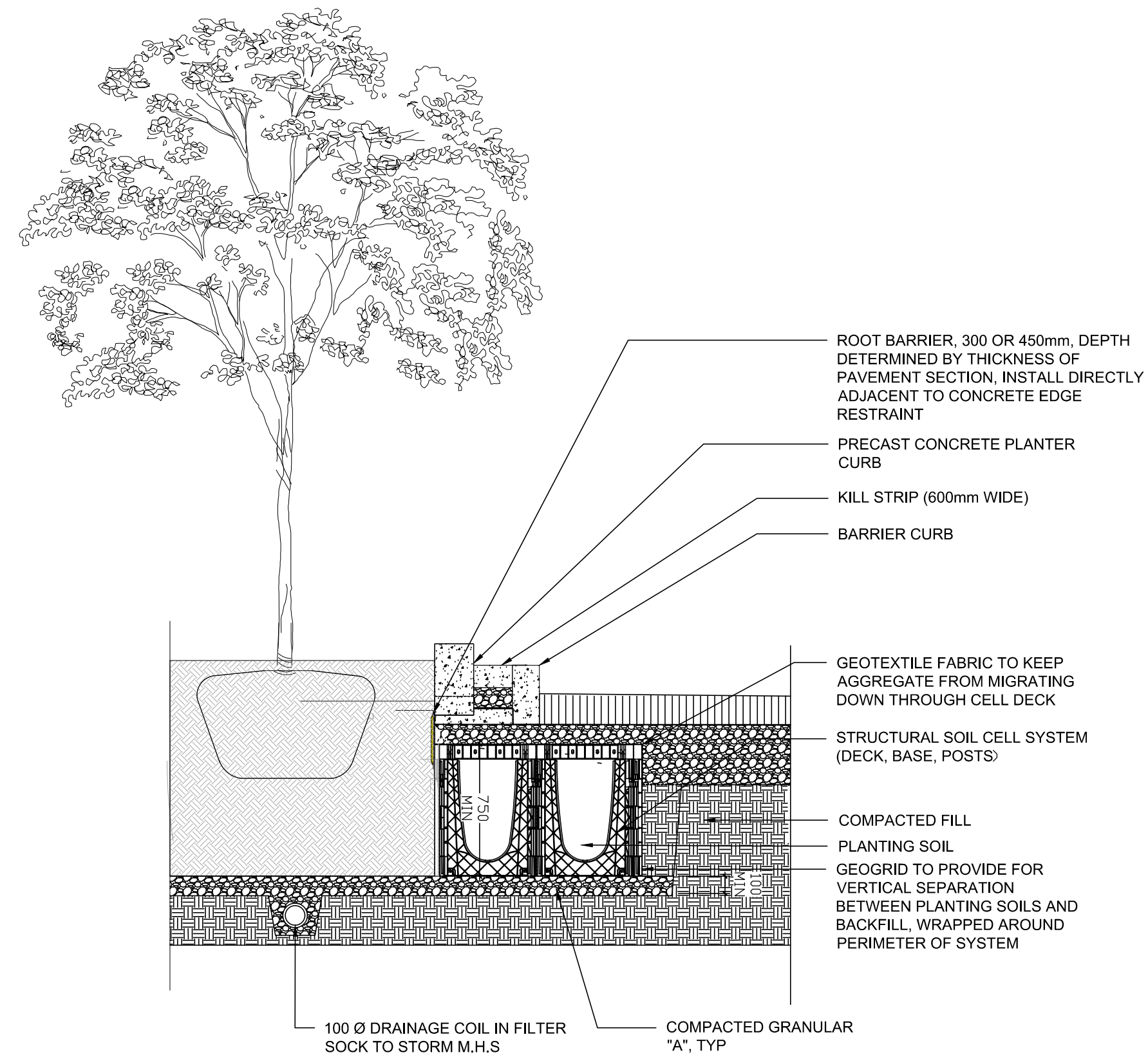
- A COMPACTED PLANTING MEDIUM
- B ROOTBALL, TOP OF ROOT CROWN TO BE FLUSH WITH PLANTING SOIL AND 50mm ABOVE SOIL OUTSIDE PLANTING PIT
- C LOOSEN PIT BOTTOM TO DEPTH OF 200mm (EXCEPT IMMEDIATELY BENEATH ROOT BALL), IF BASE OF PIT IS OVER EXCAVATED RAISE TO PROPER LEVEL WITH COMPACTED TOPSOIL
- D EDGE TO DEPTH OF 100mm
- E 50-75 mm MULCH LAYER, KEEP MULCH AWAY FROM STEMS
- F PRUNE DAMAGE, DISEASED OR WEAK BRANCHES AS PER ACCEPTED HORTICULTURAL PRACTICE, DO NOT DAMAGE OR REMOVE LEADER
- G PROVIDE 150 mm DEEP SAUCER AT TREES
- H APPROVED SUBGRADE (NATIVE OR IMPORTED)



TREE PLANTING:

- 1 CUT AND REMOVE TOP 1/3 OF BURLAP AND WIRE BASKET FROM ROOTBALL.
- 2 PLACE 2-METAL POSTS (40 x 40 x 2100 mm) AT OUTSIDE OF ROOTBALL AND FASTEN TO TRUNK WITH APPROVED TREE TIES
- 3 WATER THOROUGHLY SUBSEQUENT TO PLANTING
- 4 WRAP TREE TRUNK AFTER INSPECTION OF TREES BY LANDSCAPE ARCHITECT.
- 5 PROTECT TREE FROM RODENT DAMAGE.
- 6 REMOVE TREE RINGS, STAKES AND TRUNK WRAPPING AFTER WARRANTY PERIOD.

1 B&B/WIRE BASKET DECIDUOUS TREE PLANTING SCALE: NTS



2 STRUCTURAL SOIL CELLS SCALE: NTS

200 SERIES

MBR-0200-00005
Legacy # MBR200-S

Sustainability Facts	
Unit Size	One (1) 200 Bike Rack
Min. Max.	
Carbon Footprint (GWP)	113 147 kg CO2-Eq
<small>(Measured in kilograms of carbon dioxide equivalent)</small>	
Total energy use (PSE)	1900 2470 MJ-Eq
<small>(Measured in megajoules of energy equivalent)</small>	
Water use (WSP)	1.27 1.52 m3 water
<small>(Measured in cubic metres of water)</small>	
Material recyclability	100%

DESCRIPTION: 200 Series - 200 Bike Rack, H.S. Steel Tube, Aluminum Top Coating, Surface Mount, 2 Bike Configuration

FINISH: All steel components are protected with E-Coat Rust Proofing. The Maglin Powdercoat System provides a durable finish on all metal surfaces.

INSTALLATION: The bike rack is delivered pre-assembled.

TO SPECIFY: Select MBE-0200-00005
Choose:
- Powdercoat Color

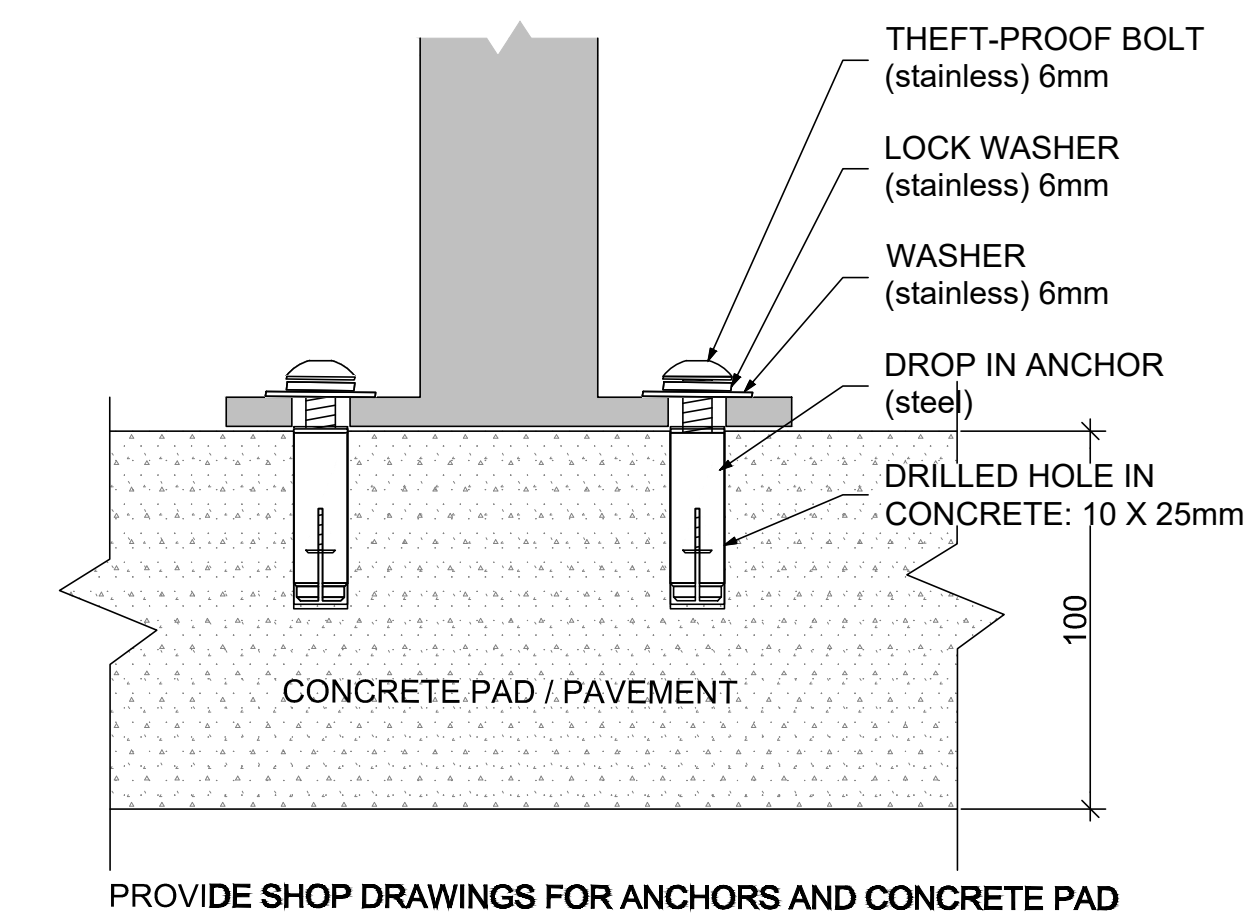
HEIGHT: 35.94" (91.3cm) DIAMETER: 16.63" (42.2cm) WEIGHT: 18.45lb (8.37kg)

MAGLIN
Site Furniture

1 800 776 8804
877 385 8133
www.maglin.com
info@maglin.com

All drawings, specifications, design and details on this page remain the property of Maglin Site Furniture Inc. and may not be used without Maglin's authorization.
* Details and specifications may vary due to continuing improvements of our products.

3 SURFACE MOUNTED BIKE RACK (BY MAGLIN OR APPROVED EQUAL) SCALE: NTS



4 BIKE RACK INSTALLATION - CONCRETE SCALE: NTS



6			
5			
4			
3	Re-issued as per comments	23/08/23	MR
2	Re-issued as per comments	23/03/15	MR
1	Issued for Site Plan submission	22/09/28	HP

DESIGNED BY / CONSULTANT	CHECKED BY / VERIFY PAR
M RUHLAND	M RUHLAND
DRAWN BY / DESIGN PAR	
H P	

SCALE: FORCE 1:300

ARCHITECT	CONSULTANT
CONSULTANT	CONSULTANT

PROJECT / LOCATION
VCA / MOVEH RENOVATION AND ADDITION
 2285 BRISTOL CIRCLE
 OAKVILLE, ON

DRAWING
DETAILS

DATE	SHEET NO.
SEPT. 2022	D-1
PROJECT NO.	
22-1695	