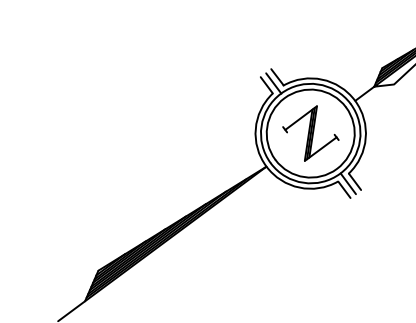


TREE PRESERVATION PLAN

1295 Sixth Line
Oakville, Ontario
L6H 1X1



- NORTHWEST PROPERTY LINE**
- TPZ fences to be installed along edge of existing asphalt driveway
 - When asphalt within these TPZ's is removed, peel off only top layer and assess root presence in base material
 - Work to be supervised by a Certified Arborist
 - Arborist to prune roots encountered as necessary

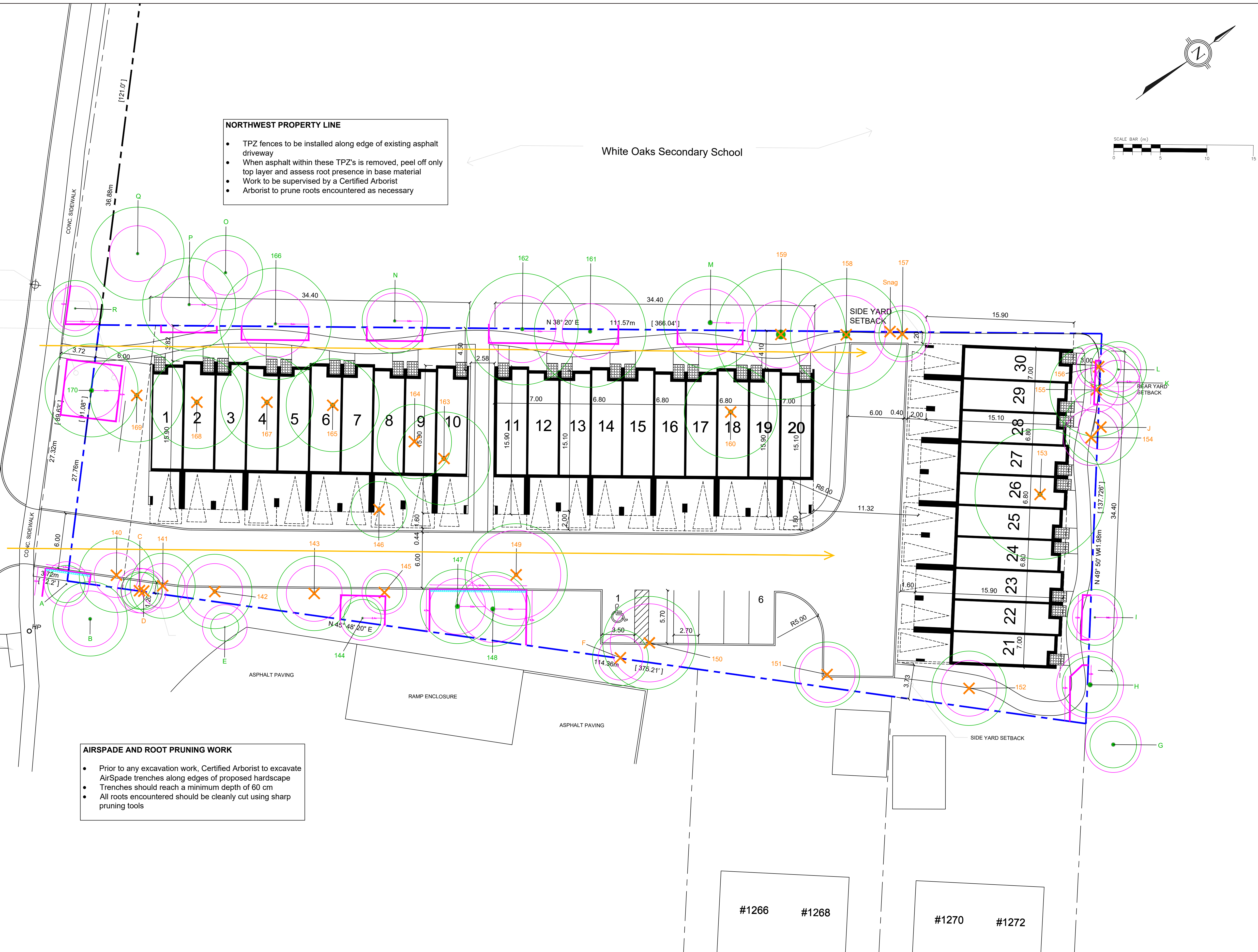
White Oaks Secondary School

FIRE HYDRANT
FRONT YARD SETBACK
ROAD WIDENING

6th LINE

BUS STOP

- AIRSPADE AND ROOT PRUNING WORK**
- Prior to any excavation work, Certified Arborist to excavate AirSpade trenches along edges of proposed hardscape
 - Trenches should reach a minimum depth of 60 cm
 - All roots encountered should be cleanly cut using sharp pruning tools



- Notes**
- All base information has been supplied by the client
 - Of the 49 trees on this Plan, 28 are recommended for removal and 21 can be preserved
 - Canopy cover across the site will be reduced from 38% to 13%
 - Trees will be planted as part of the final landscaping
 - Refer to the Arborist Report prepared for the subject site, Revised April 25, 2025 for specific instructions regarding tree protection requirements

LEGEND

●	TREE TO BE PRESERVED
●	TREE TO BE REMOVED
✕	SYMBOL OF TREE TO BE REMOVED
○	TREE DRIPLINE
○	TREE PROTECTION ZONE
—	TREE PROTECTION FENCING
—	SITE ACCESS ROUTE
—	PROPERTY BOUNDARY
▨	AIRSPADE TRENCH

MAPLE HILL
TREE SERVICES

1220 HERITAGE ROAD
BURLINGTON
ONTARIO
L7L 4X9

P: 905-824-2100
W: www.maplehilltree.com
E: kyle@maplehilltree.com

Drawing By: Kyle Buckley
ISA Certified Arborist ON-2744A

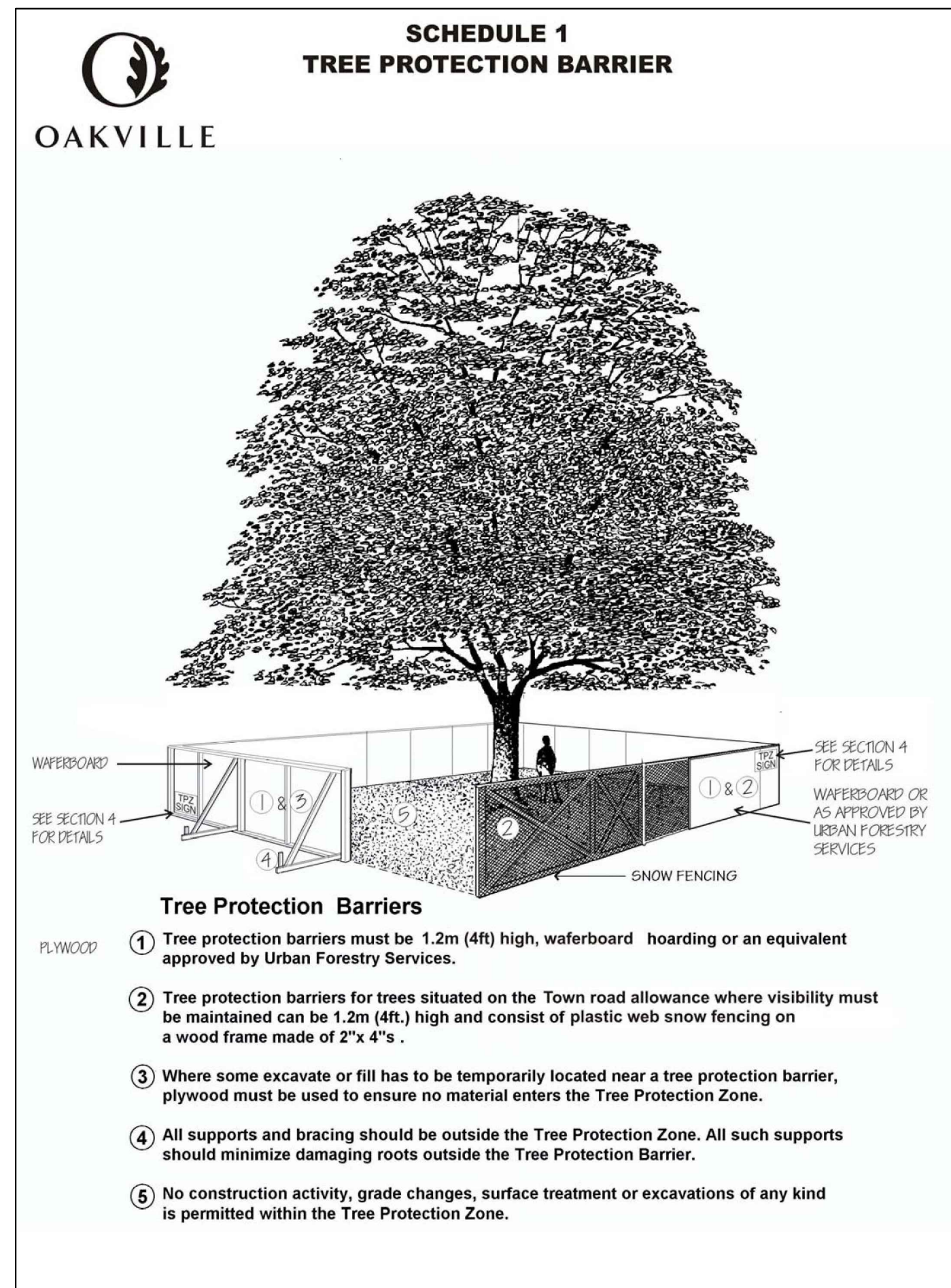
Date: 25 April 2025

Scale: 1:200

#1266 #1268 #1270 #1272

REDBANK CRESCENT

Tree ID	Common Name	Botanical Name	DBH (cm)	Dripline Radius (m)	Health	Structure	TPZ Radius (m)	Owner	Comments	Action
140	Norway Maple	<i>Acer platanoides</i>	27	4	G	F	2.4	Subject Site	Pruning wounds (L), Crook (L), Stem wound (M), Competing limb (L), Surface roots (L)	Remove
141	Norway Maple	<i>Acer platanoides</i>	26	3.5	G	F	2.4	Subject Site	Pruning wounds (L), Codominant, V-shaped union @ ~2.0 m, Included bark, Surface roots (L)	Remove
142	Norway Maple	<i>Acer platanoides</i>	34	4	G	F	3.0	Subject Site	Sweep (L), Pruning wounds (L), U-shaped union @ ~2.5 m, Surface roots (L)	Remove
143	Red Maple	<i>Acer rubrum</i>	31	4	F	F	3.0	Subject Site	Codominant, U-shaped union @ ~1.5, Pruning wounds (M), Epicormic branches (M), Tip dieback (L)	Remove
144	Norway Maple	<i>Acer platanoides</i>	20	2	G	F	2.4	Subject Site	Pruned to clear hydro lines (M)	Preserve
145	Eastern White Cedar	<i>Thuja occidentalis</i>	16, 16	2	G	G	2.4	Subject Site	Calculated DBH = 23 cm, Multi-stemmed @ ground with two stems cut off at 1.0 m, Pruning wounds (L)	Remove
146	Pear	<i>Pyrus spp.</i>	42	3	P	P	3.0	Subject Site	Massive stem wound, Hollow trunk, Decay (H), Cavity (H), Dead branches (H)	Remove
147	Norway Spruce	<i>Picea abies</i>	44	4	G	G	3.0	Subject Site	Surface roots (L), Pruning wounds (L), Fencing to be installed at 4 x DBH	Preserve
148	Norway Spruce	<i>Picea abies</i>	59	4	G	G	3.5	Subject Site	Surface roots (L), Pruning wounds (L), Fencing to be installed at 3.5 x DBH	Preserve
149	White Mulberry	<i>Morus alba</i>	43, 43, 48	5.5	F	P	4.8	Subject Site	Calculated DBH = 77 cm, Three stems @ ground, Decaying stump @ base, Poor wound encapsulation, Pruning wounds (M), Dead branches (M)	Remove
150	Manitoba Maple	<i>Acer negundo</i>	61	5	P	F	4.2	Subject Site	Poor wound encapsulation, Dead wood (H), Epicormic branches (H), Pruning wounds (H), Over extended limbs (H), Burls	Remove
151	Manitoba Maple	<i>Acer negundo</i>	35	3.5	F	P	3.0	Subject Site	Poor form (H), Epicormic branches (H), Pruning wounds (H), Fair vigor, Some sealed wounds and some open wounds	Remove
152	Manitoba Maple	<i>Acer negundo</i>	44	4	F	P	3.0	Subject Site	Lean (H), Trunk wound (L), Broken branches (L)	Remove
153	Black Walnut	<i>Juglans nigra</i>	55	7	G	G	3.6	Subject Site	Water well very near tree, Pruning wounds (L), U-shaped union @ ~4.0 m	Remove
154	Siberian Elm	<i>Ulmus pumila</i>	19, 30	3	P	P	3.0	Subject Site	Calculated DBH = 36 cm, Codominant, V-shaped union @ ground, Included bark, Dead wood (H)	Remove
155	Siberian Elm	<i>Ulmus pumila</i>	28	5	F	P	2.4	Subject Site	V-shaped union @ ~5.0 m, Dead branches (H), Cavity @ base (M), Broken branches (M)	Remove
156	Siberian Elm	<i>Ulmus pumila</i>	21	2	F	P	2.4	Subject Site	Old stem cut off @ ~70 cm - now decaying and hollow, Dead branches (M)	Remove
157	Siberian Elm	<i>Ulmus pumila</i>	38, ~21	2.5	G	F	3.0	Shared	Calculated DBH = 43 cm, V-shaped union @ ground, Growing through chain link fence, Pruning wounds (L), Broken branches (L), Good encapsulation	Remove
158	Manitoba Maple	<i>Acer negundo</i>	27, 55	6	F	P	4.2	Subject Site	Calculated DBH = 61 cm, Dead ash tree fused through center of tree, Poor form (H), Dead branches (H), Pruning wounds (H), Basal cavity (M)	Remove
159	Manitoba Maple	<i>Acer negundo</i>	55	7	F	F	3.6	Subject Site	Decaying stub @ ~1.5 m (H), Dead branches (M), Broken branches (M)	Remove
160	Norway Spruce	<i>Picea abies</i>	54	5	G	G	3.6	Subject Site	Broken branches (L)	Remove
161	Bur Oak	<i>Quercus macrocarpa</i>	38	6	F	F	3.0	Subject Site	V-shaped unions in canopy (L), Pruning wounds (L), Dead branches (M), Fencing to be installed at ~3.5 x DBH	Preserve
162	Manitoba Maple	<i>Acer negundo</i>	51	6	P	P	3.6	Subject Site	Tip dieback on 30% of crown, Dead branches (M), Pruning wounds (H), Trunk wound (H), Fencing to be installed at ~3 x DBH	Preserve
163	Pear	<i>Pyrus spp.</i>	32, 36	5	P	P	3.0	Subject Site	Calculated DBH = 48 cm, Splitting union @ ~ 60 cm, Decay (H), Dead branches (H), Dying tree could fail anytime	Remove
164	Blue Spruce	<i>Picea pungens</i>	36	4	P	F	3.0	Subject Site	Pruning wounds (H), Canopy raised to ~8.0 m, Dieback 40%	Remove
165	Norway Spruce	<i>Picea abies</i>	58	5	G	G	3.6	Subject Site	Surface roots (L), Pruning wounds (L)	Remove
166	Manitoba Maple	<i>Acer negundo</i>	28, ~52	6	F	P	3.6	Subject Site	Calculated DBH = 59 cm, V-shaped union @ ~30 cm, Included bark, Pruning wounds (H), Dead branches (H), Fence inclusion (H), Fencing to be installed at ~3 x DBH	Preserve
167	Norway Spruce	<i>Picea abies</i>	49	5	G	G	3.0	Subject Site	Pruning wounds (L), Surface roots (L)	Remove
168	Norway Spruce	<i>Picea abies</i>	31, 54	5	G	F	4.2	Subject Site	Calculated DBH = 62 cm, V-shaped union @ ~30 cm, Included bark, Competing stem, Pruning wounds (M), Surface roots (L)	Remove
169	Norway Spruce	<i>Picea abies</i>	47	5	G	G	3.0	Subject Site	Pruning wounds (M), Root damage (L) on exposed roots	Remove
170	Norway Spruce	<i>Picea abies</i>	47	5	G	F	3.0	Subject Site (may become Town)	Pruning wounds (L), Codominant, V-shaped union @ ~1.5 m, Included bark, Appraised value = \$4,310	Preserve
A	Norway Maple	<i>Acer platanoides</i>	~18	2	F	F	2.4	Town	Pruning wounds (H), Pruned to stay beneath primary hydro lines, Appraised value = \$140, Fencing to be installed at 7.5 x DBH	Preserve
B	Honey Locust	<i>Gleditsia tricanthos var. inermis</i>	~35	4	G	F	3.0	Neighbour (1265 Sixth Line)	Poor form (M), Pruning wounds (M), Pruned to clear primary hydro lines	Preserve
C	Norway Maple	<i>Acer platanoides</i>	~14	2	F	F	2.4	Shared	Base growing through chain link fence, Pruning wounds (M), Sweep (M)	Remove
D	Norway Maple	<i>Acer platanoides</i>	~16	2	F	F	2.4	Shared	Base growing through chain link fence, Pruning wounds (M), Sweep (M)	Remove
E	Pear	<i>Pyrus spp.</i>	~15	1.5	P	P	2.4	Neighbour (1265 Sixth Line)	Epicormic branches (H), Pruning wounds (H), Dead branches (M)	Preserve
F	Manitoba Maple	<i>Acer negundo</i>	~16, 16	3	F	P	2.4	Shared	Calculated DBH = 23 cm, Growing through chain link fence, Lean (M), Two stems fused together, Pruning wounds (M)	Remove
G	Blue Spruce	<i>Picea pungens</i>	~38	2.5	F	F	3.0	Neighbour (1274 Redbank Cres)	Pruning wounds (H), Dead stubs (M), Pruned to clear hydro wires	Preserve
H	Manitoba Maple	<i>Acer negundo</i>	~20, 25, 30, 30	3	F	P	3.6	Shared	Calculated DBH = 53 cm, Poor form (H), Multi-stemmed @ ground, Dead branches (L), Fencing to be installed at 4 x DBH	Preserve
I	Manitoba Maple	<i>Acer negundo</i>	~20	3	F	F	2.4	White Oaks Secondary	Poor form (H), Sweep (M), Fencing to be installed at 7 x DBH	Preserve
J	Siberian Elm	<i>Ulmus pumila</i>	~14, 20	4	F	F	2.4	White Oaks Secondary	Calculated DBH = 24 cm, V-shaped union @ ~30 cm, Included bark, Dead branches (M)	Remove
K	Siberian Elm	<i>Ulmus pumila</i>	~16, 20	3	F	F	2.4	White Oaks Secondary	Calculated DBH = 26 cm, Bowed away from subject property, Codominant @ ground, Dead branches (L)	Preserve
L	Siberian Elm	<i>Ulmus pumila</i>	~15, 15	3	F	F	2.4	White Oaks Secondary	Calculated DBH = 21 cm, Codominant @ ground, Dead branches (H)	Preserve
M	Cherry	<i>Prunus spp.</i>	~52	5	G	G	3.6	White Oaks Secondary	Pruning wounds (L), Fencing to be installed at ~4 x DBH	Preserve
N	White Mulberry	<i>Morus alba</i>	~11, 20, 24	3.5	F	P	3.0	White Oaks Secondary	Calculated DBH = 33 cm, Multi-stemmed @ ground, Included bark, Poor form (M)	Preserve
O	Kentucky Coffeetree	<i>Gymnocladus dioica</i>	~28	4	G	G	2.4	White Oaks Secondary	Defect-free	Preserve
P	Kentucky Coffeetree	<i>Gymnocladus dioica</i>	~31	5	G	G	3.0	White Oaks Secondary	Pruning wounds (L), Dead branches (L)	Preserve
Q	Kentucky Coffeetree	<i>Gymnocladus dioica</i>	~34	5	F	F	3.0	White Oaks Secondary	Dead branches (M), Dense canopy (M)	Preserve
R	Manitoba Maple	<i>Acer negundo</i>	~19, 21	3	F	P	2.4	Town	Calculated DBH = 28 cm, Sprouts from old stump, Lean (M), Dead branches (L), Appraised value = \$460	Preserve



Tree Protection Zone

- No grade change, storage or temporary storage of any materials or equipment, washing of equipment, nor the dumping of any debris is permitted within this area.
- The tree protection barrier must not be altered, moved or removed in any way without the written authorization of

**Maple Hill Tree Services
905-824-2100**

TREE PRESERVATION PLAN

1295 Sixth Line
Oakville, Ontario
L6H 1X1

TREE INVENTORY

TREE PROTECTION BARRIER DETAIL

TREE PROTECTION ZONE SIGN

MAPLE HILL
TREE SERVICES
1220 HERITAGE ROAD
BURLINGTON
ONTARIO
L7L 4X9

P: 905-824-2100
W: www.maplehilltree.com
E: kyle@maplehilltree.com

Drawing By: Kyle Buckley
ISA Certified Arborist ON-2744A

Date: 25 April 2025

Scale: N/A