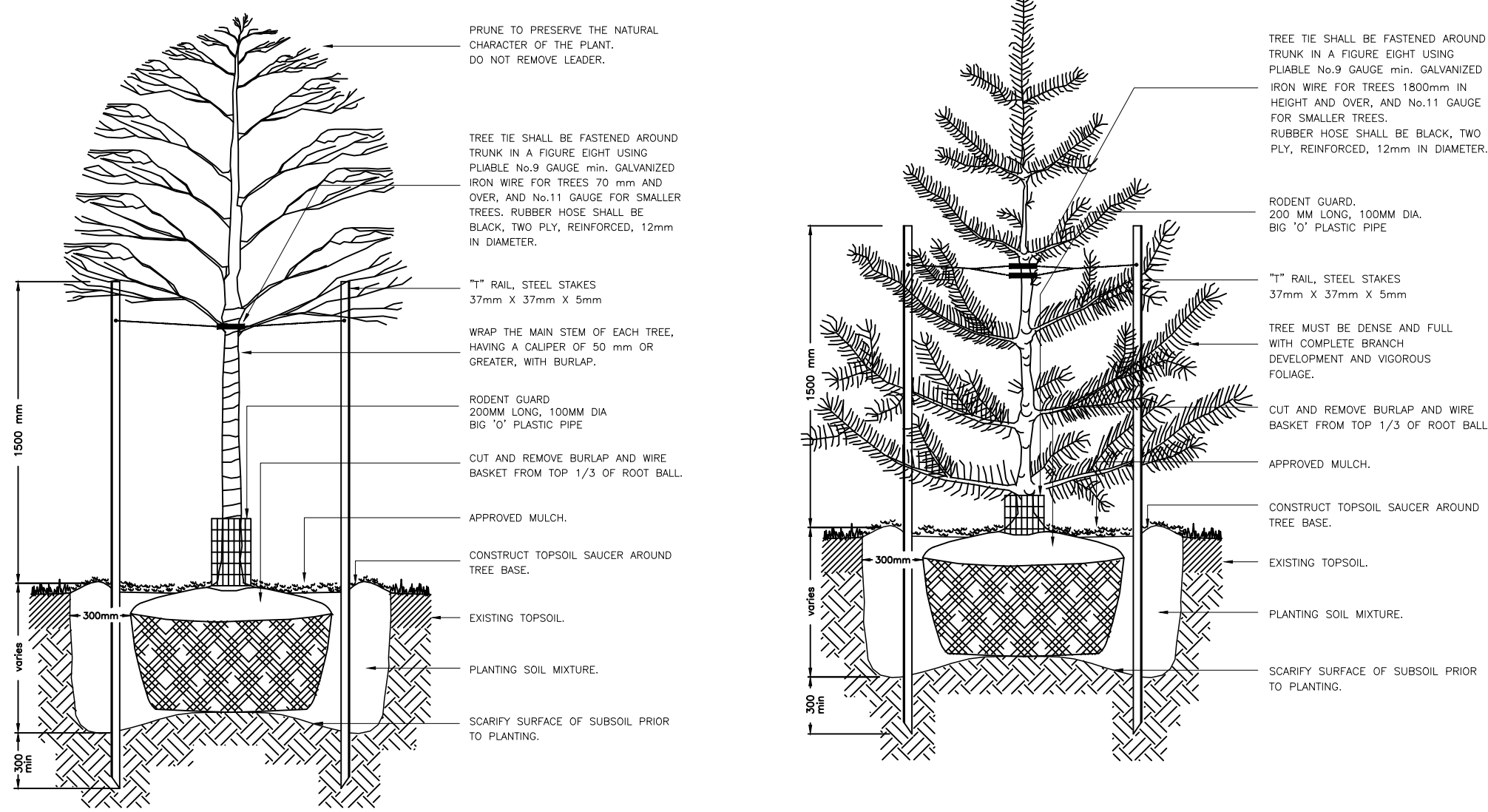


Key	Botanical Name	Common Name	Cal.	Ht.	Spr.	Cond.	Remarks	Total
Qb	<i>Quercus bicolor</i>	Swamp White Oak	70mm			WB	Uniform Specimen	3
Afa	<i>Acer Freemanii</i> 'Autumn Blaze'	Autumn Blaze Maple	70mm			WB	Tree Form	1
Sri	<i>Syringa Recticulata</i> 'Ivory Silk'	Ivory Silk Japanese Lilac	60mm			WB	Tree Form	1
ORNAMENTAL TREES								
Fsd	<i>Fagus Sylvatica</i> 'Dawyc Green'	Dawyc Green Beech	50mm			WB	Tree Form	4
CONIFEROUS TREES								
Pr	<i>Pinus resinosa</i>	Red Pine	175cm			WB	Uniform Specimen	1
LARGE DECIDUOUS SHRUBS								
ac	<i>Amelanchier canadensis</i>	Serviceberry	150cm		15 GAL		Multi-stem	2
CONIFEROUS/ EVERGREEN SHRUBS								
jhb	<i>Juniperus horizontalis</i> 'Blue Chip'	Blue Chip Juniper	40cm		3 GAL		Uniform Specimen	8
lmh	<i>Taxus x media</i> 'Hicksii'	Hick's Yew	80cm		5 GAL		Uniform Specimen	14
tcn	<i>Taxus cuspidata</i> 'Nana'	Dwarf Japanese Yew	40cm		3 GAL		Uniform Specimen	8
ORNAMENTAL GRASSES/ PERENNIALS								
ckf	<i>Calamagrostis x acutiflora</i> 'Karl Foerster'	Feather Reed Grass			1 GAL		Uniform Specimen	13

PLANT LIST - LOT C

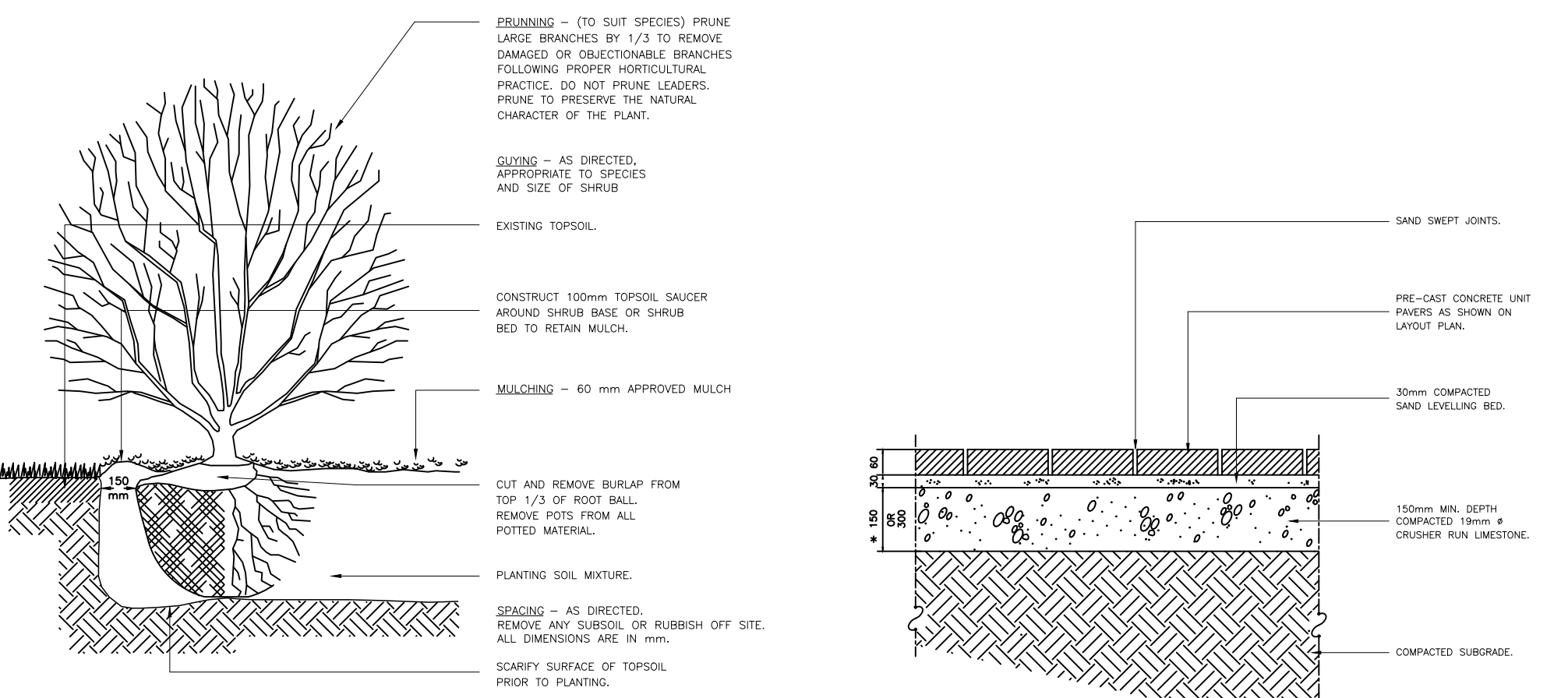


NOTES:
 - TREES UNDER 70mm REQUIRE TWO STAKES, TREES 70mm CALIPER AND OVER REQUIRE THREE STAKES.
 - SET TREE 50mm HIGHER THAN SURROUNDING GRADE TO ALLOW FOR SETTLEMENT.
 - THE ABOVE DETAIL DOES NOT REPRESENT ANY PARTICULAR SPECIES.

NOTES:
 - TREES UNDER 1800mm REQUIRE TWO STAKES, TREES OVER 1800mm REQUIRE THREE STAKES.
 - SET TREE 50mm HIGHER THAN SURROUNDING GRADE TO ALLOW FOR SETTLEMENT.
 - THE ABOVE DETAIL DOES NOT REPRESENT ANY PARTICULAR SPECIES.

DECIDUOUS TREE PLANTING DETAIL NO. 1

CONIFEROUS TREE PLANTING DETAIL NO. 2

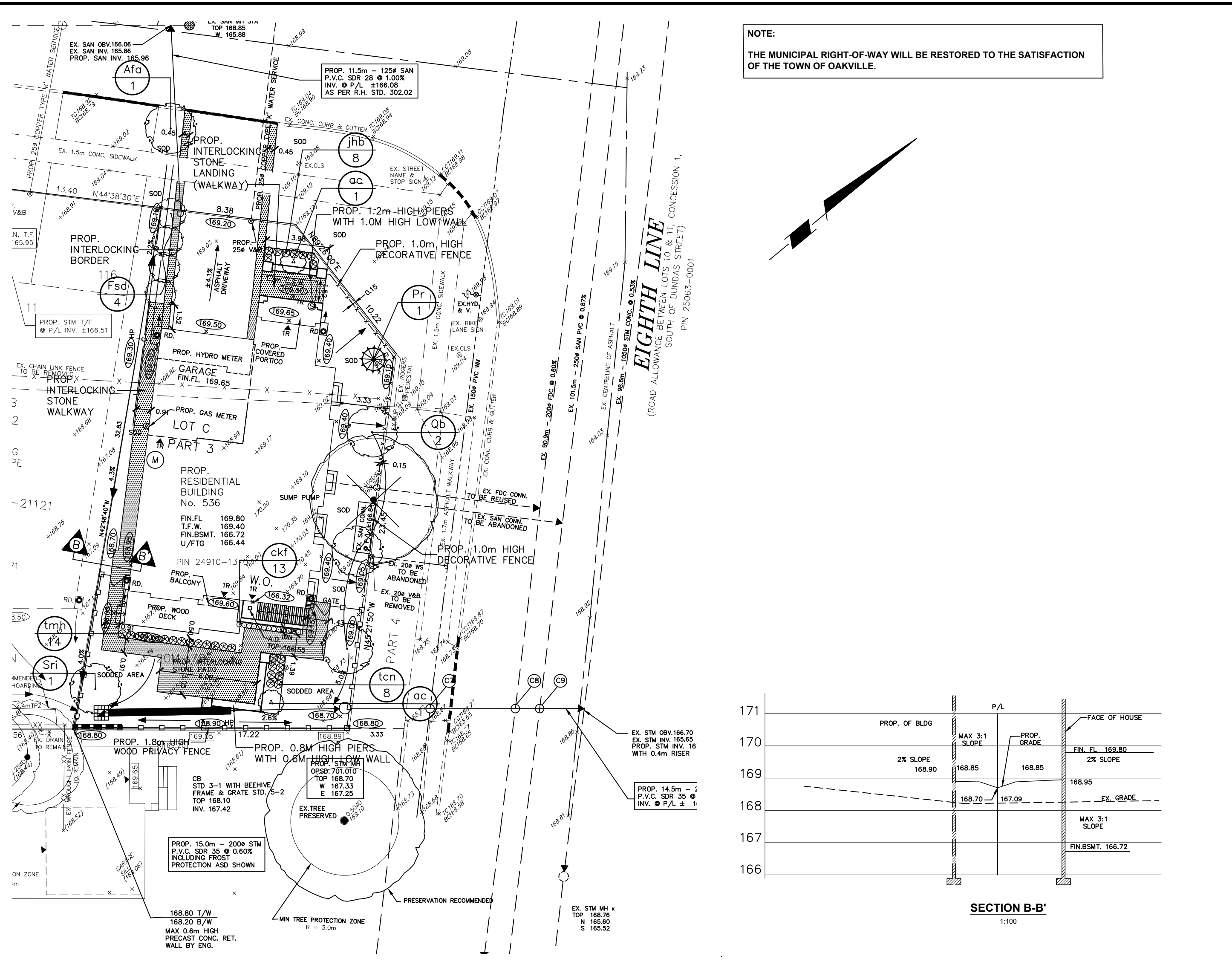


NOTES:
 - PLANTING METHOD ILLUSTRATED, SHALL APPLY EQUALLY TO BARE ROOT STOCK AND BALLED STOCK.
 - SET SHRUBS 50 mm HIGHER THAN SURROUNDING GRADE TO ALLOW FOR SETTLEMENT.
 - SHRUBS PLANTED IN GROUPS SHALL BE SET IN CONTIGUOUS BEDS.
 - THE ABOVE DETAIL DOES NOT REPRESENT ANY PARTICULAR SPECIES.

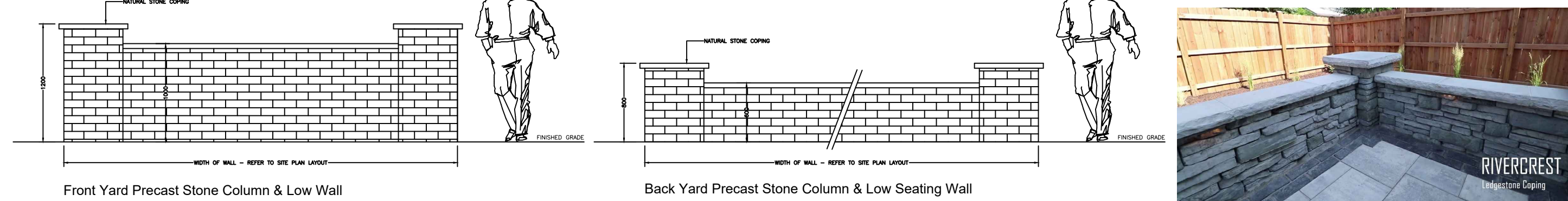
NOTES:
 - SUBGRADE AND GRANULAR COMPACTION TO CONFORM WITH OPSS FORM 501.
 - PRECAST CONCRETE UNIT PAVERS TO BE UNLOCK PRODUCT OR APPROVED EQUAL.
 - CRUSHER RUN LIMESTONE TO CONFORM WITH OPSS FORM 1010 GRADATION FOR GRANULAR 'A'.

SHRUB PLANTING DETAIL NO. 3

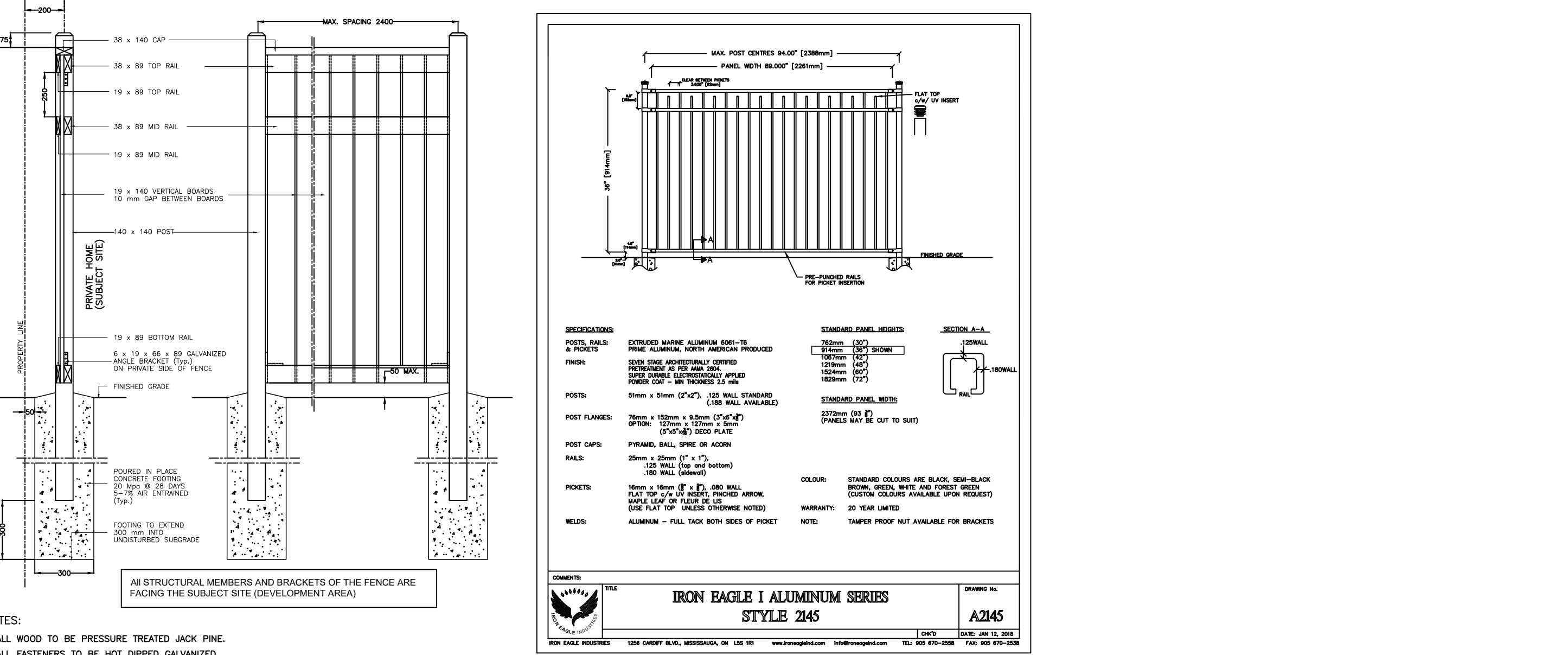
INTERLOCKING STONE PAVERS DETAIL NO. 4



LANDSCAPE SITE PLAN

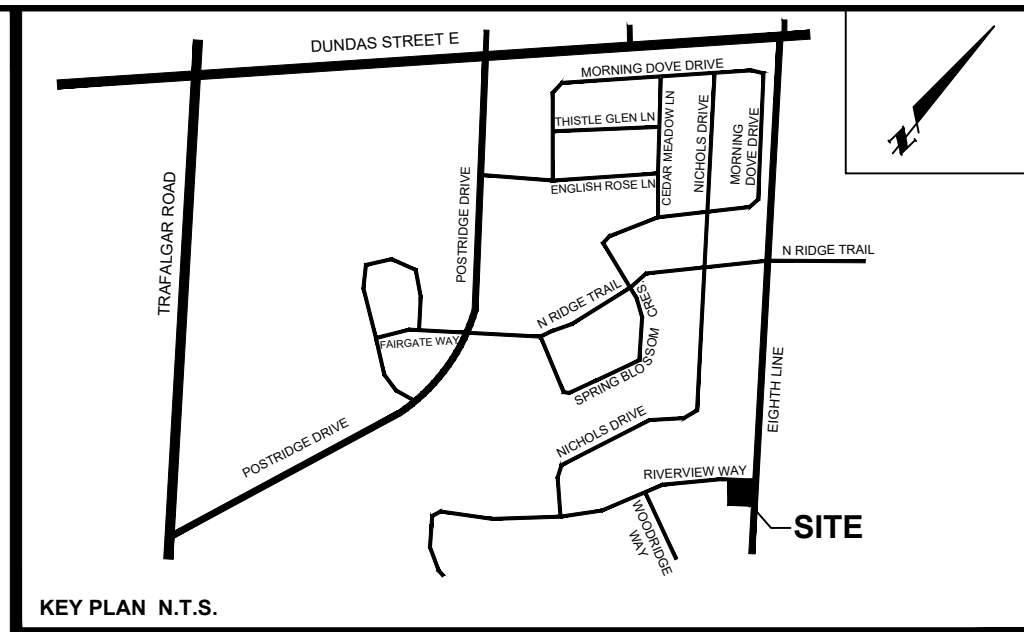


FRONT & BACK YARD PIERS & WALLS DETAIL NO. 7

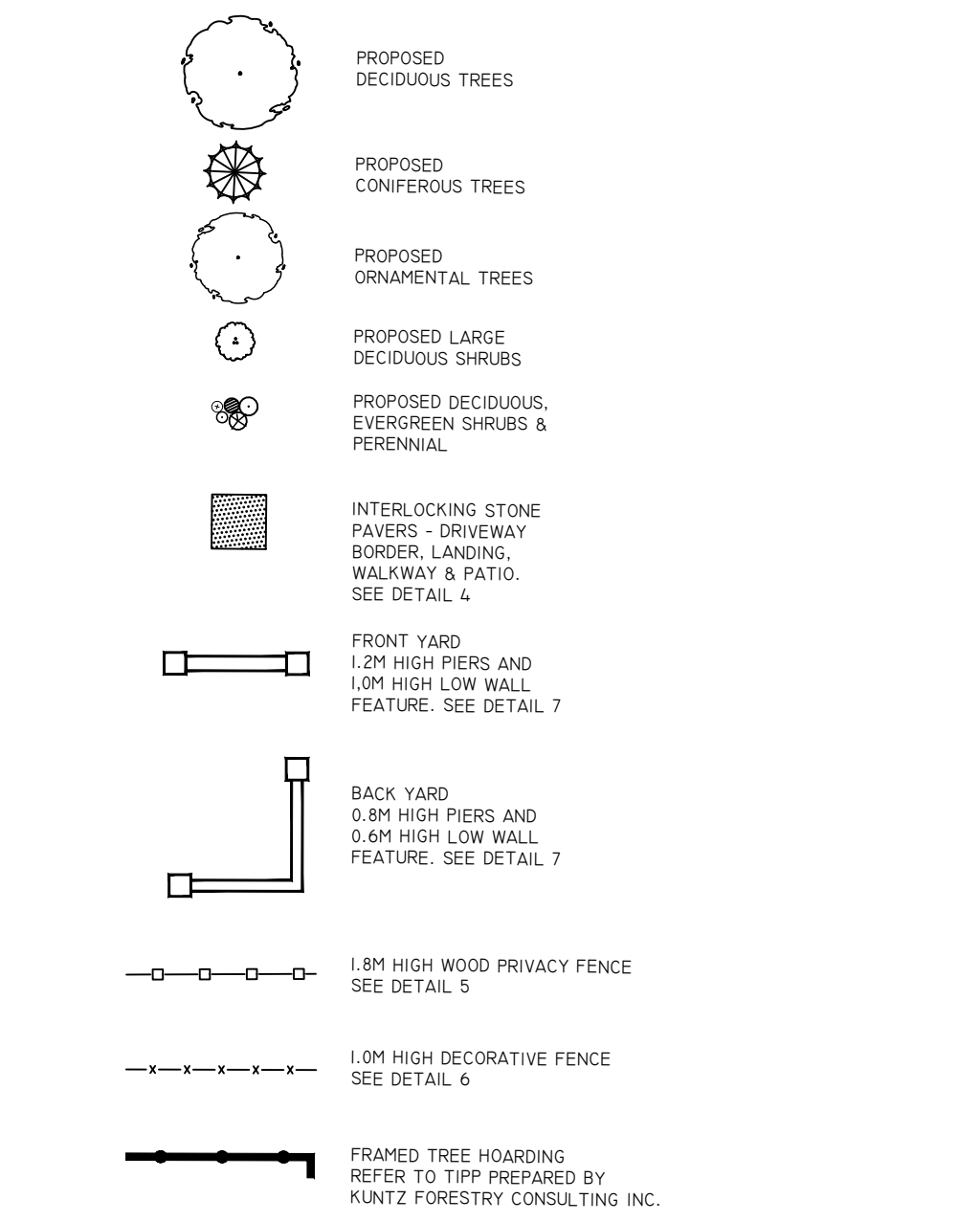


1.8M HT. WOOD PRIVACY FENCE DETAIL NO. 5

1.0M HT. DECORATIVE METAL FENCE DETAIL NO. 6



LEGEND



NOTE:
 FOR ADDITIONAL INFORMATION, DETAILS, DIMENSIONS AND CONFORMITY TO THE SITE PLAN, THE CONTRACTOR MUST REFER TO THE ARCHITECTURAL SITE PLAN PREPARED BY: VERUS DESIGN
 FOR GRADING INFORMATION, SERVICING & UTILITIES, THE CONTRACTOR MUST REFER TO GRADING PLAN PREPARED BY: SKIRA ASSOCIATES LTD.

No.	DATE	REVISION	INIT.
5	NOV. 04/22	3RD SUBMISSION TO TOWN	P.H.
4	OCT. 20/22	REVISED AS PER TOWN COMMENTS	P.H.
3	AUG. 15/22	2ND SUBMISSION TO TOWN	P.H.
2	MAR. 10/22	FIRST SUBMISSION TO TOWN	P.H.
1	FEB. 28/22	ISSUED TO ARCH & ARBORIST FOR REVIEW	P.H.

TODESIGN landscape designer
 34 Sequoia Drive, Markham, Ontario L6C 3J1
 416 993 1968

PROPOSED RESIDENTIAL BUILDINGS
 PART OF BLOCK 116, REGISTERED PLAN 20M-706, AND PART OF LOT 11, CONCESSION 1, SOUTH OF DUNDAS STREET

2358 EIGHTH LINE
MEADOWRIDGE DEVELOPERS INC.
 13182 BRITANNIA ROAD, MILTON, ONTARIO L5E 0V5 TEL: (647) 533-8780

TOWN OF OAKVILLE
LANDSCAPE PLAN FOR LOT C

DATE:	SCALE:	AREA:	DRAWN BY:	REGION FILE:
FEBRUARY 2022	1:200	OAKVILLE	P.H.	LP-01