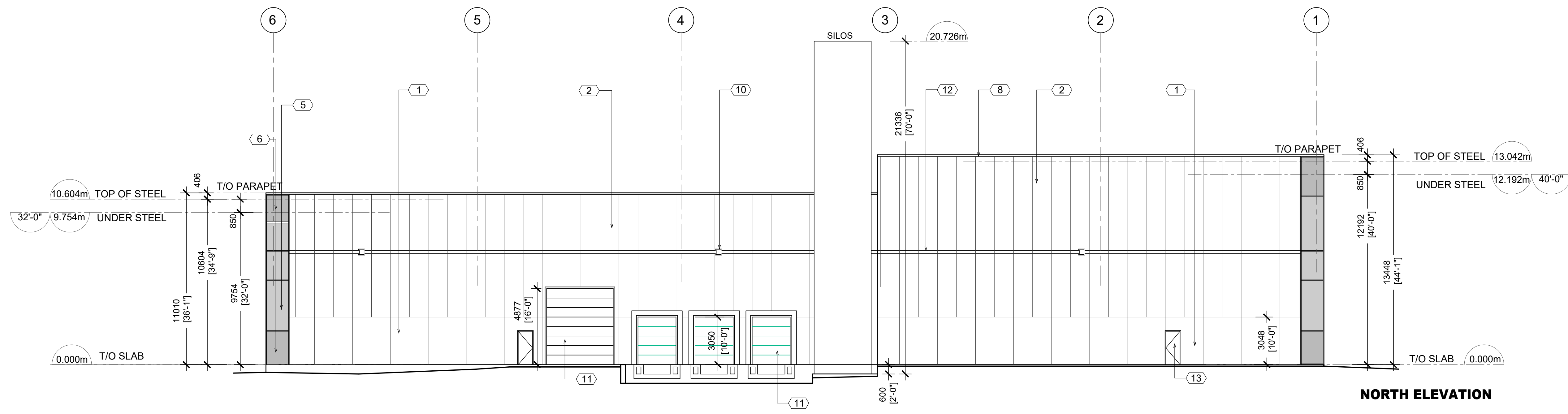


EAST ELEVATION



NORTH ELEVATION

EXTERIOR MATERIALS & FINISHES

1	PRE-CAST CONCRETE PANELS - SMOOTH FINISH - GREY
2	INSULATED METAL PANELS - COLOUR WHITE
3	ACM ACCENT PANELS - CHARCOAL GREY
4	PRE-CAST CONCRETE PANELS - SMOOTH FINISH - WHITE
5	GREY TINTED WINDOWS AND ALUMINUM FRAMES - CHARCOAL GREY
6	GREY TINTED SPANDREL PANELS AND ANODIZED ALUMINUM FRAMES - CHARCOAL GREY
7	GLASS DOORS IN ANODIZED ALUMINUM FRAMES
8	PRE-FINISHED METAL FLASHING WHITE
9	CANOPY - ACM ACCENT PANEL - CHARCOAL GREY
10	WALL PACK LIGHTING
11	OVERHEAD DOOR & FRAME - WHITE
12	SMOOTH BAND 200mm
13	H.M. DOOR & FRAME WHITE

NO.	ISSUED	BY	DATE
1.	FOR PRE-CONSULTATION	IP	06.17.2022
2.	FOR SPA	IP	11.15.2022
3.	FOR S.P.A (2ND SUBMISSION)	IP	06.01.2023
4.	FOR S.P.A (3RD SUBMISSION)	IP	08.22.2023

2.	UPDATED FOR 3RD SUBMISSION	I.P.	08.22.2023
1.	UPDATED FOR 2ND SUBMISSION	I.P.	06.01.2023

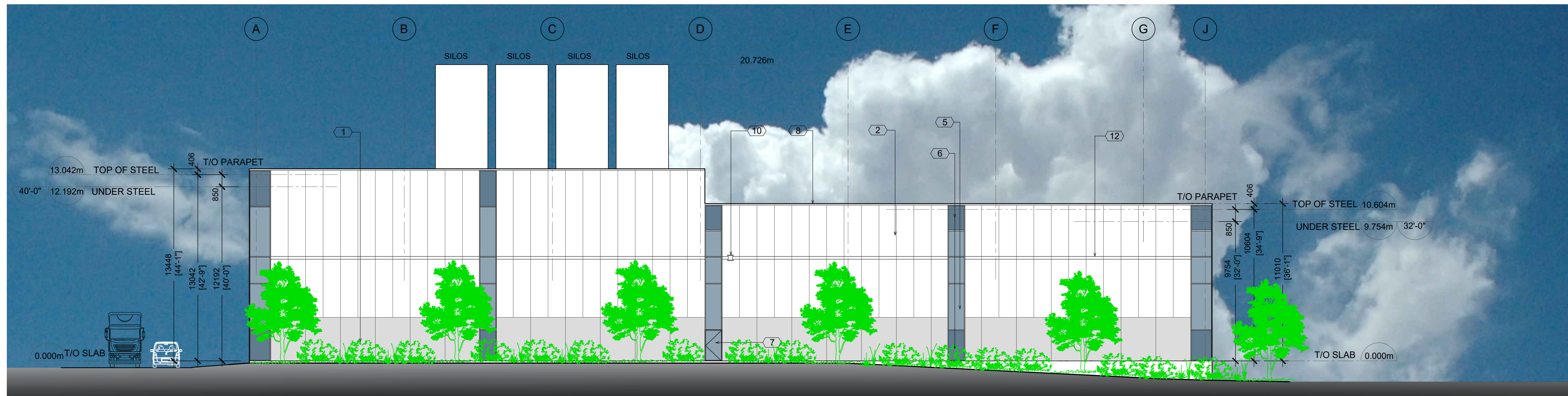
NO.	REVISED	BY	DATE
<p>Cambria Design Build Ltd.</p> <p><small>CAMBRIA</small> 1250 Journey's End Circle, Unit #1 Newmarket, ON L3Y 0B9 TEL 905-830-6026 www.cambriadesign.ca</p>			

<p>GLUCK PARTNERSHIP ARCHITECTS INC.</p> <p>156 DUNCAN MILL ROAD, TORONTO, ONTARIO TEL 416 498 0201</p>	<p>SUITE 5 M3B 3N2</p>
--	----------------------------

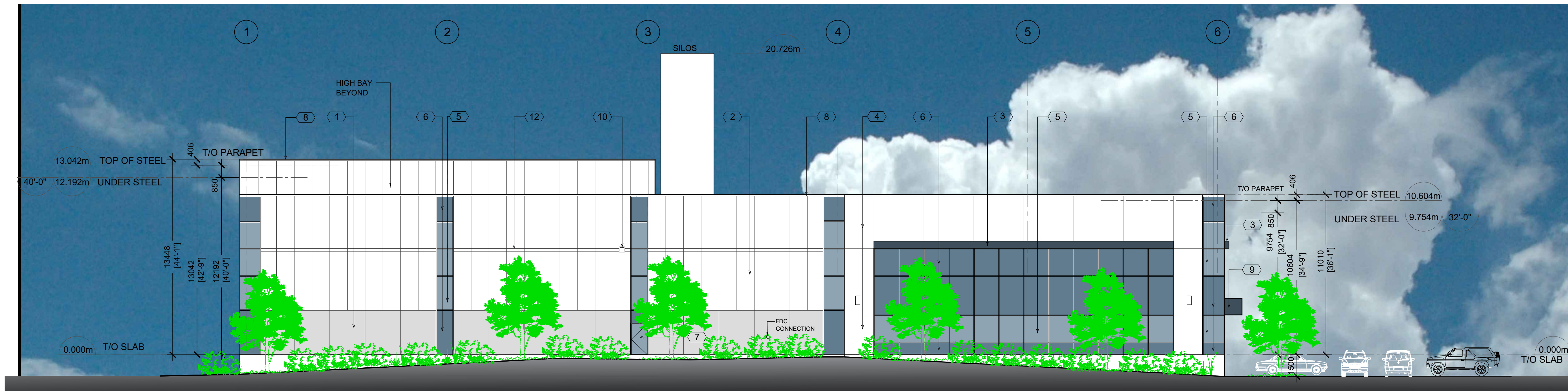
PREMIER POLY PRODUCTS
INDUSTRIAL DEVELOPMENT
OAKVILLE, ONTARIO

ELEVATIONS

<p>THOMAS GLUCK LICENCE 2849</p>	DRAWN: I.P.
	CHECKED: T.G.
	SCALE: 1:150
	DATE: APRIL 07, 2022
	PROJECT: 2218
DRWG. NO:	A-3.0



WEST ELEVATION



SOUTH ELEVATION

EXTERIOR MATERIALS & FINISHES

1	PRE-CAST CONCRETE PANELS - SMOOTH FINISH - GREY
2	INSULATED METAL PANELS - COLOUR WHITE
3	ACM ACCENT PANELS - CHARCOAL GREY
4	PRE-CAST CONCRETE PANELS - SMOOTH FINISH - WHITE
5	GREY TINTED WINDOWS AND ALUMINUM FRAMES - CHARCOAL GREY
6	GREY TINTED SPANDREL PANELS AND ANODIZED ALUMINUM FRAMES - CHARCOAL GREY
7	GLASS DOORS IN ANODIZED ALUMINUM FRAMES
8	PRE-FINISHED METAL FLASHING WHITE
9	CANOPY - ACM ACCENT PANEL - CHARCOAL GREY
10	WALL PACK LIGHTING
11	OVERHEAD DOOR & FRAME - WHITE
12	SMOOTH BAND 200mm
13	H.M. DOOR & FRAME WHITE

NO.	ISSUED	BY	DATE
1.	FOR PRE-CONSULTATION	IP	06.17.2022
2.	FOR SPA	IP	11.15.2022
3.	FOR S.P.A (2ND SUBMISSION)	IP	06.01.2023
4.	FOR S.P.A (3RD SUBMISSION)	IP	08.22.2023


2.	UPDATED FOR 3RD SUBMISSION	I.P.	08.22.2023
1.	UPDATED FOR 2ND SUBMISSION	I.P.	06.01.2023
NO.	REVISED	BY	DATE

Cambria Design Build Ltd.
 1250 Journey's End Circle, Unit #1
 Newmarket, ON L3Y 0B9
 TEL 905-830-6026
 www.cambriadesign.ca

GLUCK PARTNERSHIP ARCHITECTS INC.
 156 DUNCAN MILL ROAD, SUITE 5
 TORONTO, ONTARIO M3B 3N2
 TEL 416 498 0201

PREMIER POLY PRODUCTS INDUSTRIAL DEVELOPMENT
 OAKVILLE, ONTARIO

ELEVATIONS

ONTARIO ASSOCIATION OF ARCHITECTS
 THOMAS GLUCK LICENCE 2849

DRAWN: I.P.
 CHECKED: T.G.
 SCALE: 1:150
 DATE: APRIL 07, 2022
 PROJECT: 2218
 DRWG. NO:

A-3.1

3RD SUBMISSION AUG. 22, 2023