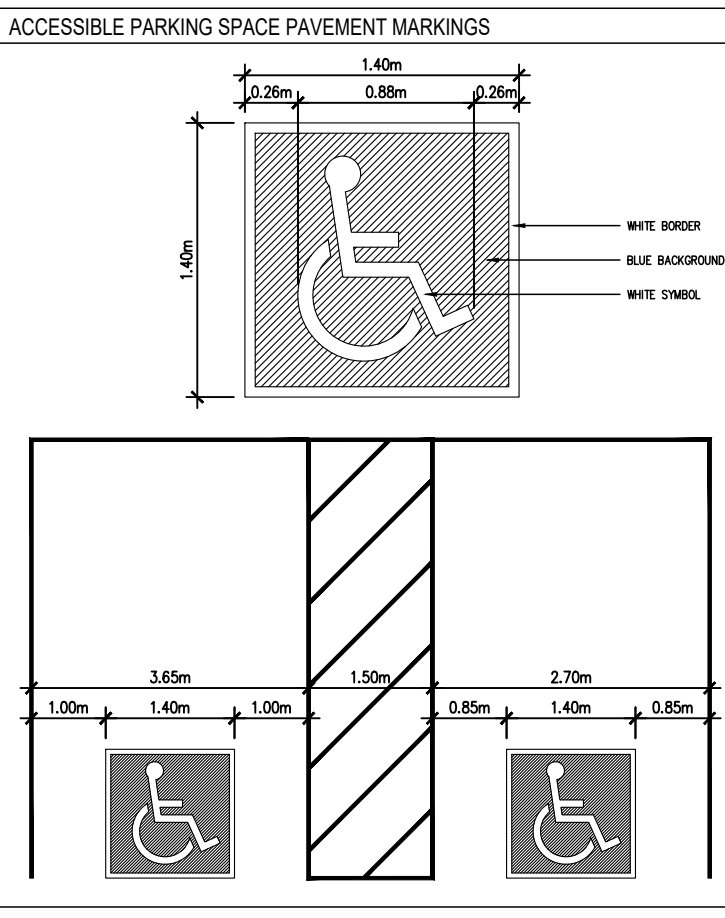
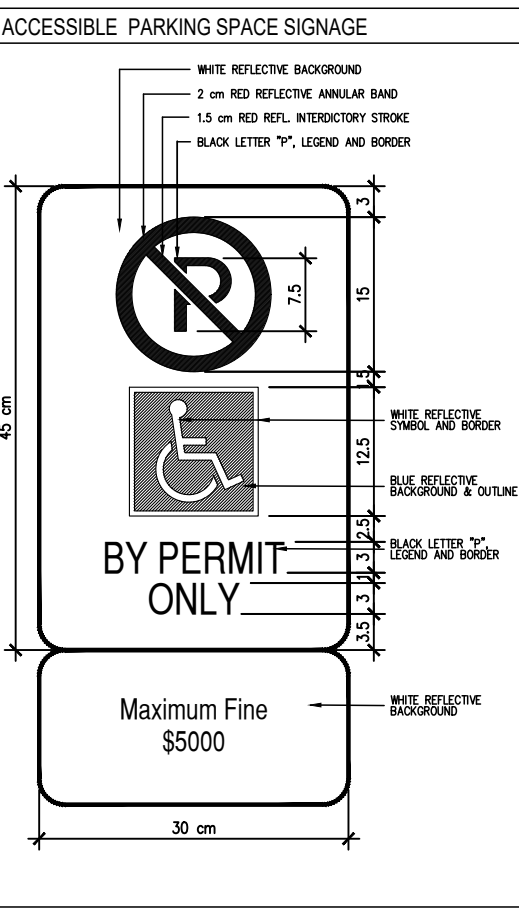
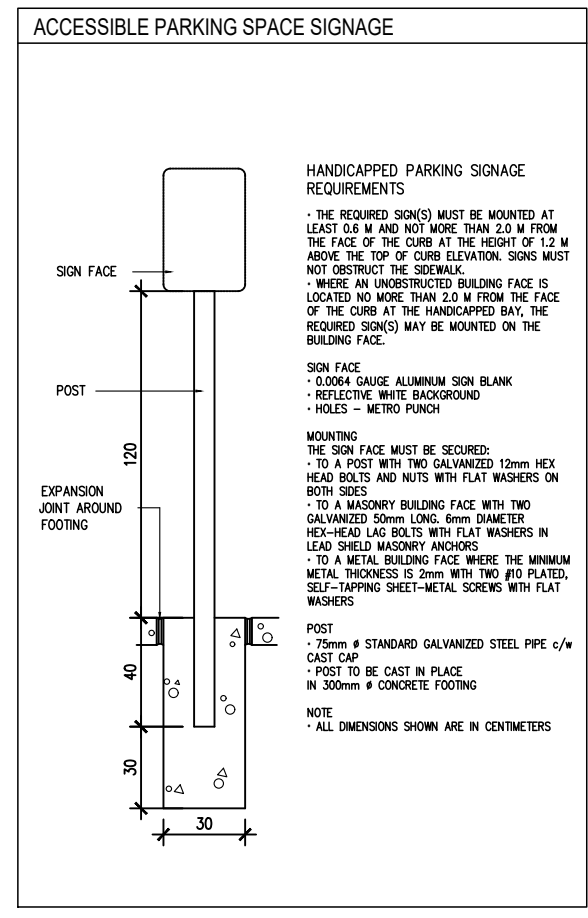
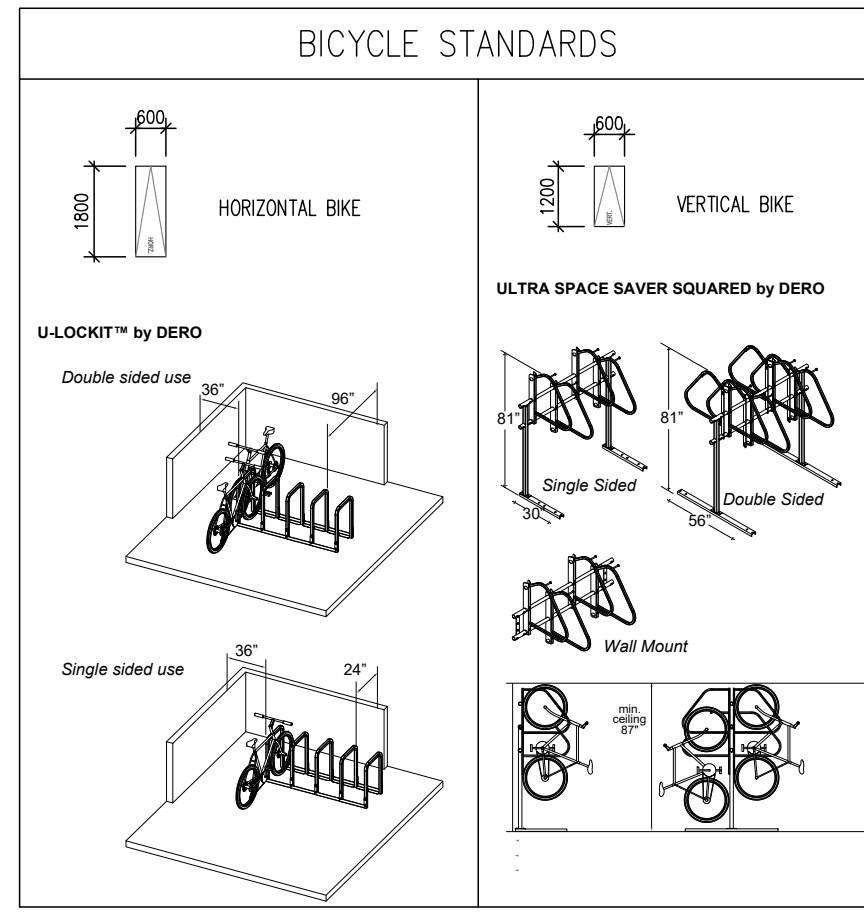


LEGEND

000.000	FINISH ELEVATION	▲	DENOTES BUILDING ENTRANCE	C.B.	CATCH BASIN
+123.18	EXISTING ELEVATION	▼	DENOTES BUILDING EXIT	○	MAINTENANCE HOLE COVER
	HANDICAPPED PARKING SPACE	▲	DENOTES BUILDING SERVICE ENTRANCE	D.C.	DEPRESSED CURB
	SIAMESI CONNECTION	○	FIRE HYDRANT		SITE LIGHTING (REFER TO LANDSCAPE DWGS)

PARKING STANDARDS



Copyright of this drawing and design is reserved by the Designer. The drawing and all associated documents are an instrument of service by the Designer. The drawing and the information contained therein may not be reproduced in whole or in part without prior written permission of the Designer.

These Contract Documents are the property of the architect. The architect bears no responsibility for the interpretation of these documents by the Contractor. Upon written application the architect will provide written graphic clarification or supplementary information regarding the intent of the Contract Documents. The architect will review Shop Drawings submitted by the Contractor for design conference only.

Drawings are not to be scaled for construction. Contractor to verify all existing conditions and dimensions required to perform the work and report any discrepancies with the Contract Documents to the architect before commencing work.

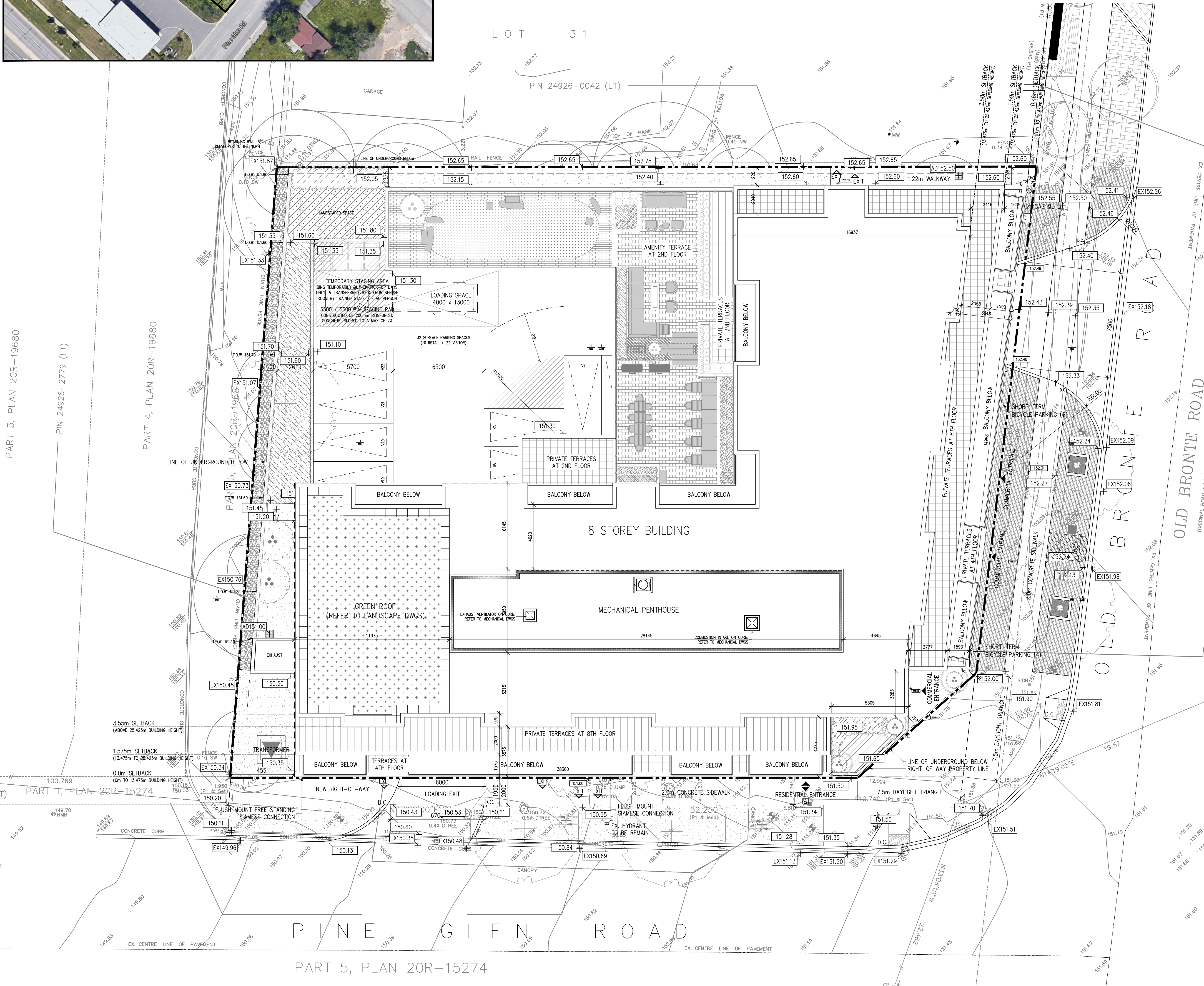
Positions of exposed or finished mechanical or electrical devices, fittings, and fixtures are indicated on architectural drawings. The locations shown on the architectural drawings govern over the Mechanical and Electrical drawings. Those items not clearly located will be located as directed by the architect.

These drawings are not to be used for construction unless noted below as "Issued for Construction".

All work to be carried out in conformance with the Code and rules of the authorities having jurisdiction.

The Designer of these plans and specifications gives no warranty or representation to any party about the constructability of the represented by them. All contractors or subcontractors must satisfy themselves when bidding and at all times that they can properly construct the work represented by these plans.

notes:



STATISTICS		2430 Old Bronte Road		368 dufferin street, toronto, on. m6k 1z8, tel: (416) 601-5416	
ZONING	H1-MU3	DATE	February 12, 2021	PROJECT #	1936
SITE AREA	2,288.60 m ²	24,634.26 ft ²	0.57	ACRES	
ESTABLISHED GRADE	151.73				
PROPOSED BUILDING:					
GFA	9,132.40 m ²	98,300.24 ft ²			
BUILDING AREA / COVERAGE	73.85%	1,690.10 m ²	18,192.07 ft ²		
RESIDENTIAL UNITS	129				
	B	1B	1B+D	2B (<75m ²)	2B (>75m ²)
	0	53	33	40	3
PARKING	142				
AT GRADE LANDSCAPE	SOFT + HARDCAPED	253.0 m ²	2,723 ft ²	11.1%	
MAIN WALL PROPORTIONALITY					
FRONT YARD (OLD BRONTE)	TOTAL LENGTH	LENGTH WITHIN 5m OF PROPERTY LINE	% WITHIN 5m (75% min.)		
FLANKAGE YARD (PINE GLEN)	42.54 m ²	51.24 m ²	97.6%		
GROUND FLOOR ANCILLARY USES					
FRONT YARD (OLD BRONTE)	TOTAL LENGTH	ANCILLARY USE LENGTH	% (max. 15%)		
FLANKAGE YARD (PINE GLEN)	34.93 m ²	6.08 m ²	17.4%		
FLOOR AREA :					
LEVEL	TOTAL FL. AREA (TFA)	NET FL. AREA (NFA)	NET SALABLE AREA (NSA)		
P2	2,176.46 m ²	23,427.20 ft ²	- m ²	- ft ²	- ft ²
P1	2,176.46 m ²	23,427.20 ft ²	- m ²	- ft ²	- ft ²
GND	375.20 m ²	4,038.62 ft ²	375.20 m ²	4,038.62 ft ²	- m ²
GND (RETAIL)	236.50 m ²	2,545.66 ft ²	236.50 m ²	2,545.7 ft ²	2,545.7 ft ²
2ND	1,295.20 m ²	13,941.40 ft ²	1,295.20 m ²	13,941.4 ft ²	11,766.0 ft ²
3RD	1,295.20 m ²	13,941.40 ft ²	1,295.20 m ²	13,941.4 ft ²	11,766.0 ft ²
4TH - 7TH	4,903.60 m ²	52,781.86 ft ²	4,903.60 m ²	52,781.9 ft ²	46,590.5 ft ²
8TH	1,026.70 m ²	11,051.30 ft ²	1,026.70 m ²	11,051.3 ft ²	9,486.2 ft ²
MPH	167.20 m ²	1,799.72 ft ²	- m ²	- ft ²	- ft ²
GRAND TOTAL (INCL. RETAIL)	9,299.6 m ²	100,100 ft ²	9,132.4 m ²	98,300 ft ²	82,775 ft ²
UNIT SUMMARY					
FLOOR	UNIT TYPE				
	B	1B	1B+D	2B (<75m ²)	2B (>75m ²)
GND	0	0	0	0	0
2ND	0	6	9	3	1
3RD	0	7	8	4	1
4TH - 7TH	0	36	12	28	0
8TH	0	4	4	5	1
TOTAL	0	53	33	40	3
TOTAL TYPES	0	86	33	43	129
ACCESSIBLE UNITS					
TOTAL	N/A	15.1%	18.2%	20.0%	0.0%
TOTAL TYPES	N/A	14	8	18.6%	17.1%
EFFICIENCY (NSA/GFA)	84.2%				
HEIGHT	PERMITTED :	(29.0m)	PROPOSED :	8 STOREYS (29.0)	
PARKING	REQUIRED :	7.70m x 5.70m SERVED BY 6.00m DRIVE AISLES	RES. (<75m ²) 0.8 PER UNIT (126) = 101	RESIDENT	P1 = 48
			RES. (>75m ²) 1.05 PER UNIT (3) = 3	RESIDENT	P2 = 58
			VISITOR 0.20 PER UNIT (129) = 26	VISITOR	P1 = 4
			RETAIL 1 PER (24 m ²) = 10	RETAIL	SURFACE = 22
			TOTAL	RETAIL	SURFACE = 10
			TOTAL	TOTAL	142
ACCESSIBLE PARKING	REQUIRED :	AS PER ZONING BY LAW	1 + 5 (9% of 140) = 6	PROPOSED :	RESIDENT 1 P2 + P1 = 3
			TOTAL	VISITOR & RETAIL	SURFACE = 3
			TOTAL	TOTAL	6
LOCKERS	REQUIRED :	N/A	PROPOSED :	GND FLOOR = 3	
			TOTAL	P1 = 43	
			TOTAL	P2 = 67	
SHORT-TERM BICYCLE	REQUIRED :	RETAIL 1.00 PER 1,000m ² (236.50) = 2*	PROPOSED :	RETAIL (SURFACE) = 2	
		VISITOR 0.25 PER UNIT (129) = 8**	TOTAL	VISITOR (SURFACE) = 8	
LONG-TERM BICYCLE	REQUIRED :	0.75 PER UNIT (129) = 23*	PROPOSED :	GND FLOOR = 23	
INDOOR AMENITY	REQUIRED :	N/A	PROPOSED :	1.32 m ² / U 169.70 m ² 1,826.63 ft ²	
			GND AMENITY	120.50 m ² 1,297.05 ft ²	
			2ND FLOOR PARTY RM	49.20 m ² 529.58 ft ²	
			TOTAL	169.70 m ² 1,826.63 ft ²	
OUTDOOR AMENITY	REQUIRED :	N/A	PROPOSED :	4.26 m ² / U 549.40 m ² 5,913.7 ft ²	
			GND LANDSCAPING	268.20 m ² 2,886.9 ft ²	
			2ND FLOOR TERRACE	281.20 m ² 3,026.8 ft ²	
			TOTAL	549.40 m ² 5,913.7 ft ²	

- 5 re-issued for site plan approval 02.12.21
 - 4 re-issued for site plan approval 12.17.20
 - 3 re-issued for site plan approval 07.10.20
 - 2 issued for spa coordination 06.23.20
 - 1 issued for site plan approval 03.30.20
- revisions:

architectural team :

mark zwicker
bonnie douthright

planning:
-
structural:
-
electrical:
-
mechanical:
-

landscape:
land art design landscape architects inc.

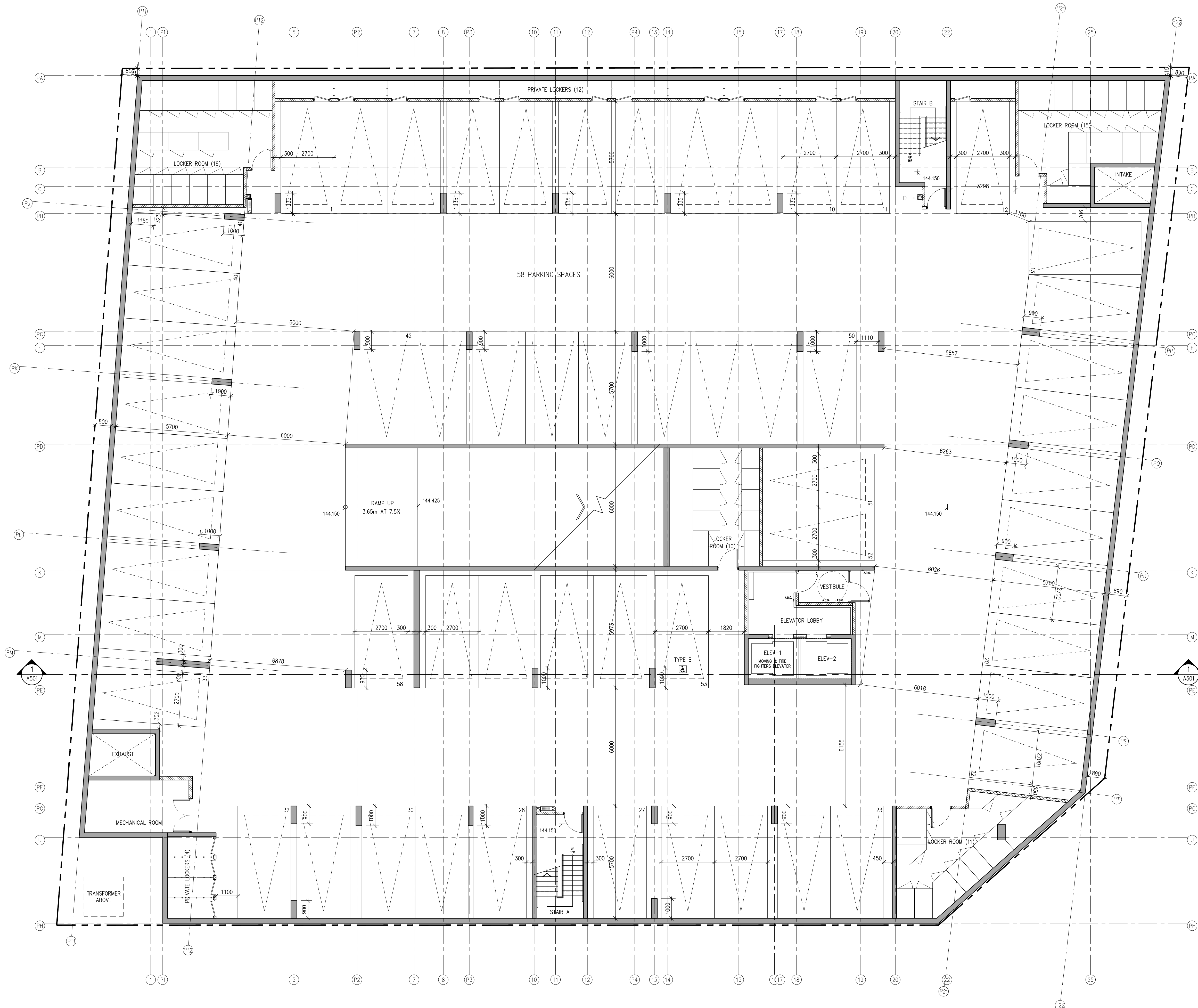
site services:
s. lewellyn & associates limited

owner:
brixen developments inc.

project:
2430 Old Bronte Road
Oakville, Ontario

site plan

february.12.2021 date:
1:150 scale:
19-36 project:
bd drawn by:
drawing number:
A101



Copyright of this drawing and design is reserved by the Designer. The drawing and all associated documents are an instrument of service by the Designer. The drawing and the information contained therein may not be reproduced in whole or in part without prior written permission of the Designer.

These Contract Documents are the property of the architect. The architect bears no responsibility for the interpretation of these documents by the Contractor. Upon written application the architect will provide written graphic clarification or supplementary information regarding the intent of the Contract Documents. The architect will review Shop Drawings submitted by the Contractor for design conformance only.

Drawings are not to be scaled for construction. Contractor to verify all existing conditions and dimensions required to perform the work and report any discrepancies with the Contract Documents to the architect before commencing work.

Locations of exposed or finished mechanical or electrical devices, fittings, and fixtures are indicated on architectural drawings. The locations shown on the architectural drawings govern over the Mechanical and Electrical drawings. Those items not clearly located will be located as directed by the architect.

These drawings are not to be used for construction unless noted below as "Issued for Construction".

All work to be carried out in conformance with the Code and bylaws of the authorities having jurisdiction.

The Designer of these plans and specifications gives no warranty or representation to any party about the constructability of the represented by them, all contractors or subcontractors must satisfy themselves when bidding and at all times that they can properly construct the work represented by these plans.

notes:

- 5 re-issued for site plan approval 02.12.21
- 4 re-issued for site plan approval 12.17.20
- 3 re-issued for site plan approval 07.10.20
- 2 issued for spa coordination 06.23.20
- 1 issued for site plan approval 03.30.20

revisions:

architectural team :

mark zwicker
 bonnie douthright



- planning: -
- structural: -
- electrical: -
- mechanical: -

landscape: land art design landscape architects inc.
 site services: s. llewellyn & associates limited
 owner: brixen developments inc.

project:
 2430 Old Bronte Road
 oakville, ontario

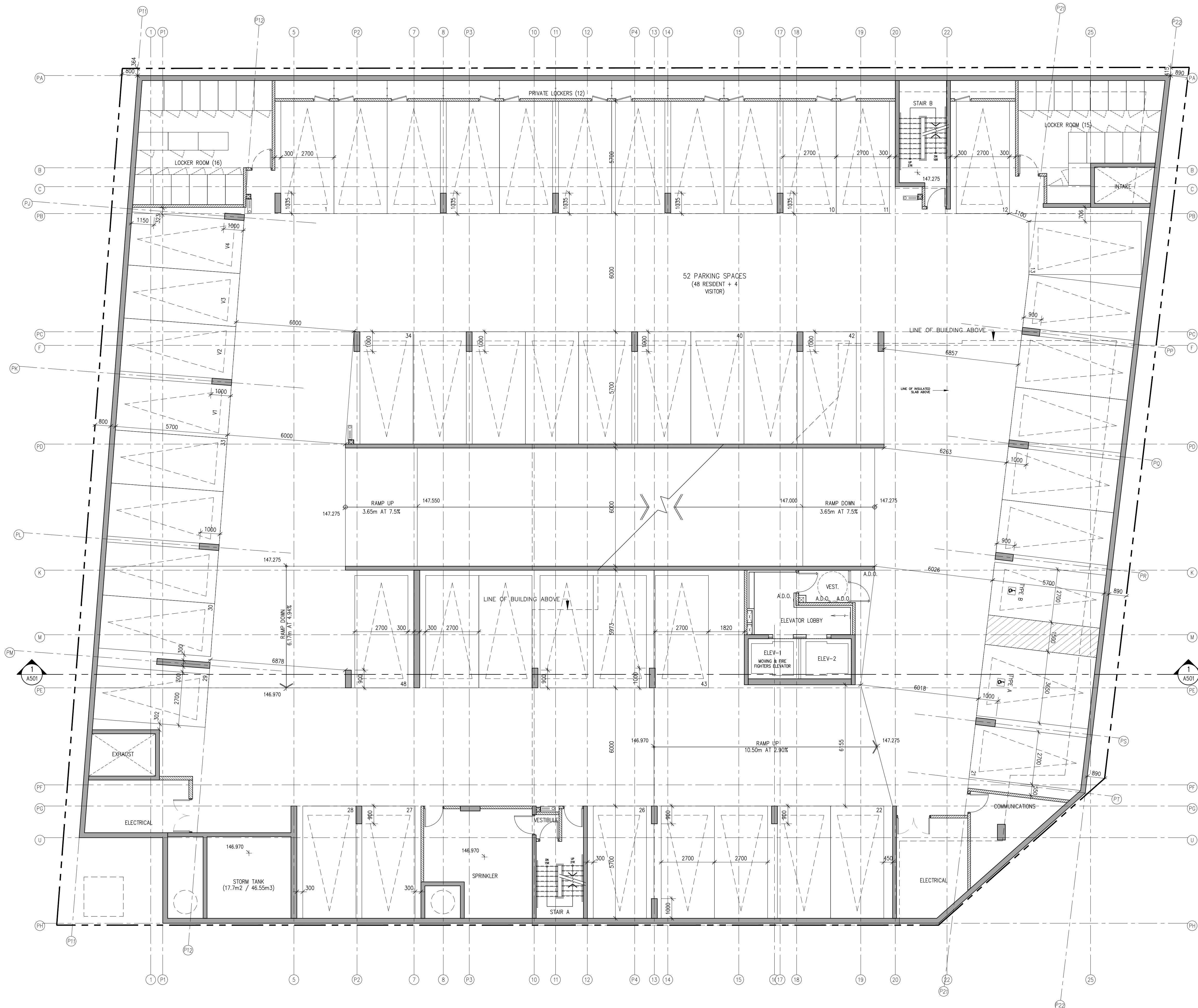
P2 plan

april.15.2021
 1:100
 19-36
 bd

date:
 scale:
 project:
 drawn by:

drawing number:

A201



Copyright of this drawing and design is reserved by the Designer. The drawing and all associated documents are an instrument of service by the Designer. The drawing and the information contained therein may not be reproduced in whole or in part without prior written permission of the Designer.

These Contract Documents are the property of the architect. The architect bears no responsibility for the interpretation of these documents by the Contractor. Upon written application the architect will provide written graphic clarification or supplementary information regarding the intent of the Contract Documents. The architect will review Shop Drawings submitted by the Contractor for design conformance only.

Drawings are not to be scaled for construction. Contractor to verify all existing conditions and dimensions required to perform the work and report any discrepancies with the Contract Documents to the architect before commencing work.

Locations of exposed or finished mechanical or electrical devices, fittings, and fixtures are indicated on architectural drawings. The locations shown on the architectural drawings govern over the Mechanical and Electrical drawings. Those items not clearly located will be located as directed by the architect.

These drawings are not to be used for construction unless noted below as "Issued for Construction".

All work to be carried out in conformance with the Code and bylaws of the authorities having jurisdiction.

The Designer of these plans and specifications gives no warranty or representation to any party about the constructability of the represented by them, all contractors or subcontractors must satisfy themselves when bidding and at all times that they can properly construct the work represented by these plans.

notes:

5 re-issued for site plan approval 02.12.21
 4 re-issued for site plan approval 12.17.20
 3 re-issued for site plan approval 07.10.20
 2 issued for spa coordination 06.23.20
 1 issued for site plan approval 03.30.20

revisions:

revisions:

architectural team :

mark zwicker
 bonnie douthright

planning:
 -
 structural:
 -
 electrical:
 -
 mechanical:
 -

landscape:
 land art design landscape architects inc.

site services:
 s. llewellyn & associates limited

owner:
 brixen developments inc.

project:
 2430 Old Bronte Road
 oakville, ontario

date:
 april.15.2021

scale:
 1:100

project:
 19-36

drawn by:
 bd

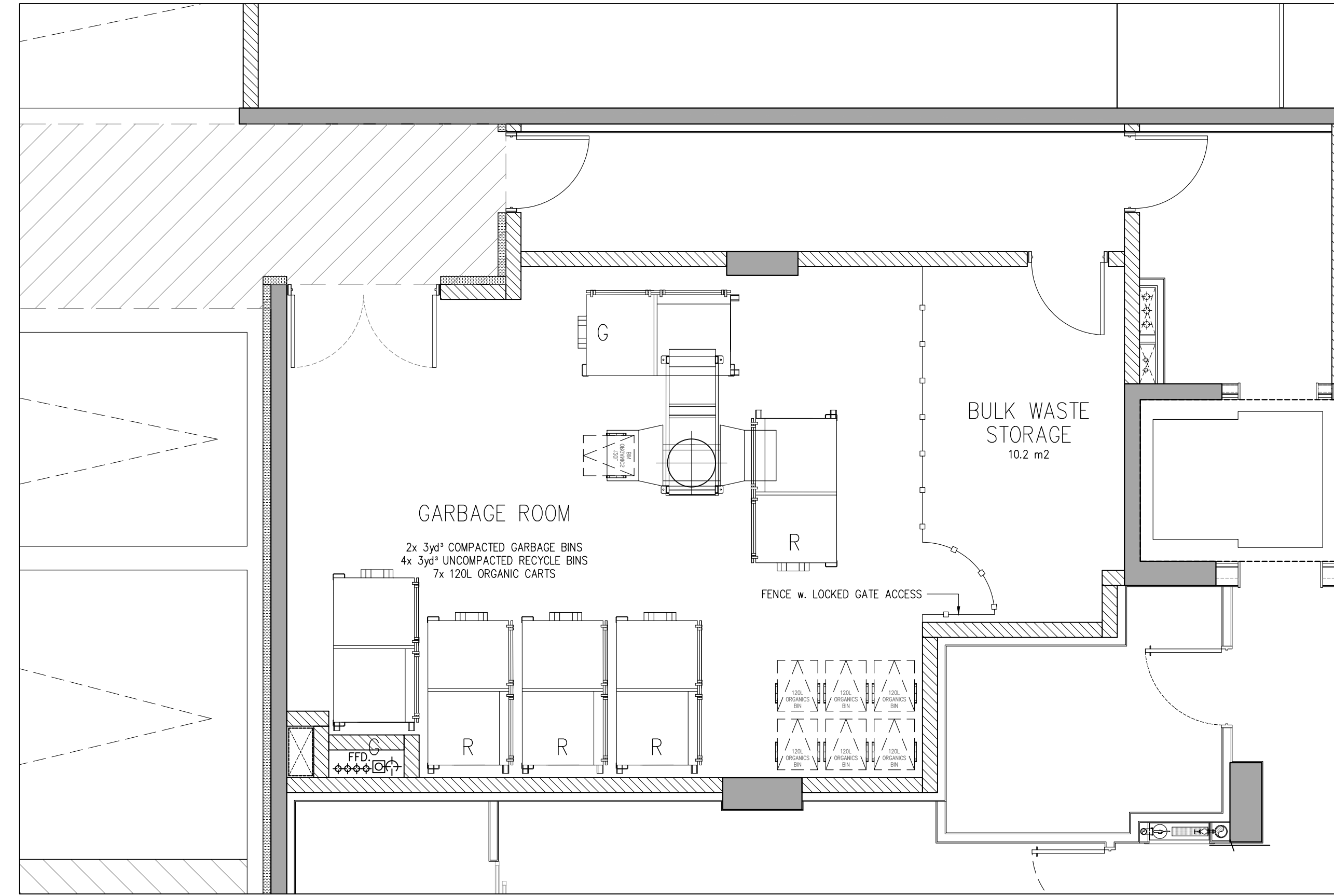
drawing number:
 A202

true north
 construction north

P1 plan

Garbage Management Plan

- The waste collection area will be located at the north-west corner. A garbage truck will enter the site from the east entrance on Old Bronte Rd and drive straight into the loading space. The truck will reverse and exit using the loading only exit to the south, exiting the site onto Pine Glen Rd. Refuse bins are to be moved to garbage staging area on pick-up days only, & transferred to & from refuse room by trained staff/flag person. Property management staff will be responsible for jockeying bins.
- All waste will be collected and sorted in the garbage/recycling room on the ground floor of the building. This room is located between the ramp and elevator. The room is large enough to house all of the required bins and carts.
- A garbage chute room is provided on each residential floor in each building. The chute ends at a tri-sorter; each resident will be required to select the ultimate destination of the waste at each chute door.
- Garbage/recycling is collected in the garbage room. Refuse bins are to be moved to the garbage staging area on pick-up days only, & transferred to & from refuse room by trained staff/flag person.
- The garbage bins shown are 2-yd³ bins. The garbage will be compacted. The building requires 1 bin.
- The recycling containers shown are 4-yd³ bins. The building requires 3 bins.
- The green waste will be stored in semi-automated carts. The building requires 7 carts.
- Internal roadways must be constructed of a hard surface material, such as asphalt, concrete or lockstone, and designed to support a minimum of 35 tonnes, the weight of a fully loaded waste collection vehicle.
- The garbage truck route will have a minimum clear height of 5m throughout the site.
- The trained staff/flag person will open the overhead door at the loading exit to allow the garbage truck to exit the site.



Copyright of this drawing and design is reserved by the Designer. The drawing and all associated documents are an instrument of service by the Designer. The drawing and the information contained therein may not be reproduced in whole or in part without prior written permission of the Designer.

These Contract Documents are the property of the architect. The architect bears no responsibility for the interpretation of these documents by the Contractor. Upon written application the architect will provide written graphic clarification or supplementary information regarding the intent of the Contract Documents. The architect will review Shop Drawings submitted by the Contractor for design conformance only.

Drawings are not to be scaled for construction. Contractor to verify all existing conditions and dimensions required to perform the work and report any discrepancies with the Contract Documents to the architect before commencing work.

Positions of exposed or finished mechanical or electrical devices, fittings, and fixtures are indicated on architectural drawings. The locations shown on the architectural drawings govern over the Mechanical and Electrical drawings. Those items not clearly located will be located as directed by the architect.

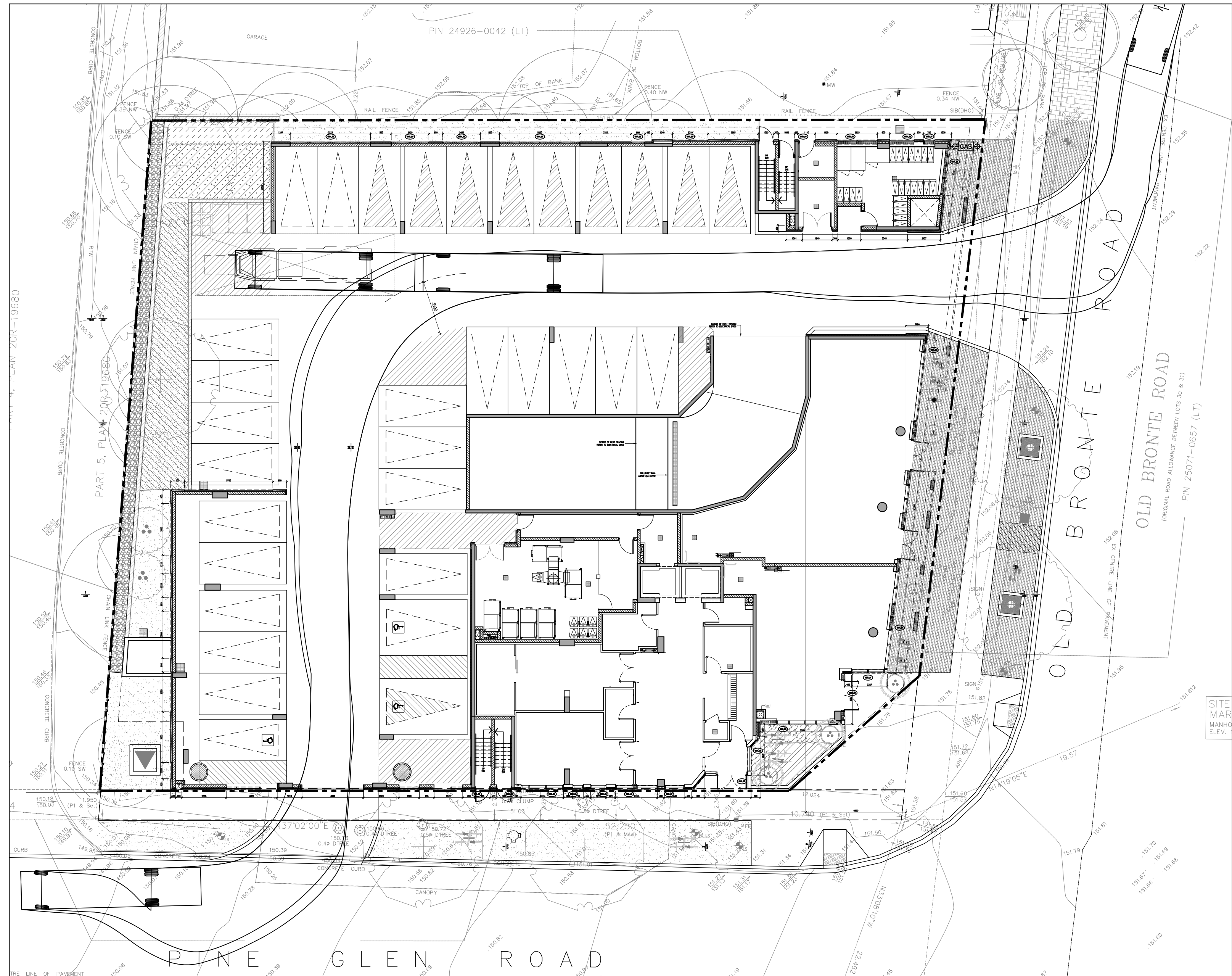
These drawings are not to be used for construction unless noted below as "Issued for Construction".

All work to be carried out in conformance with the Code and bylaws of the authorities having jurisdiction.

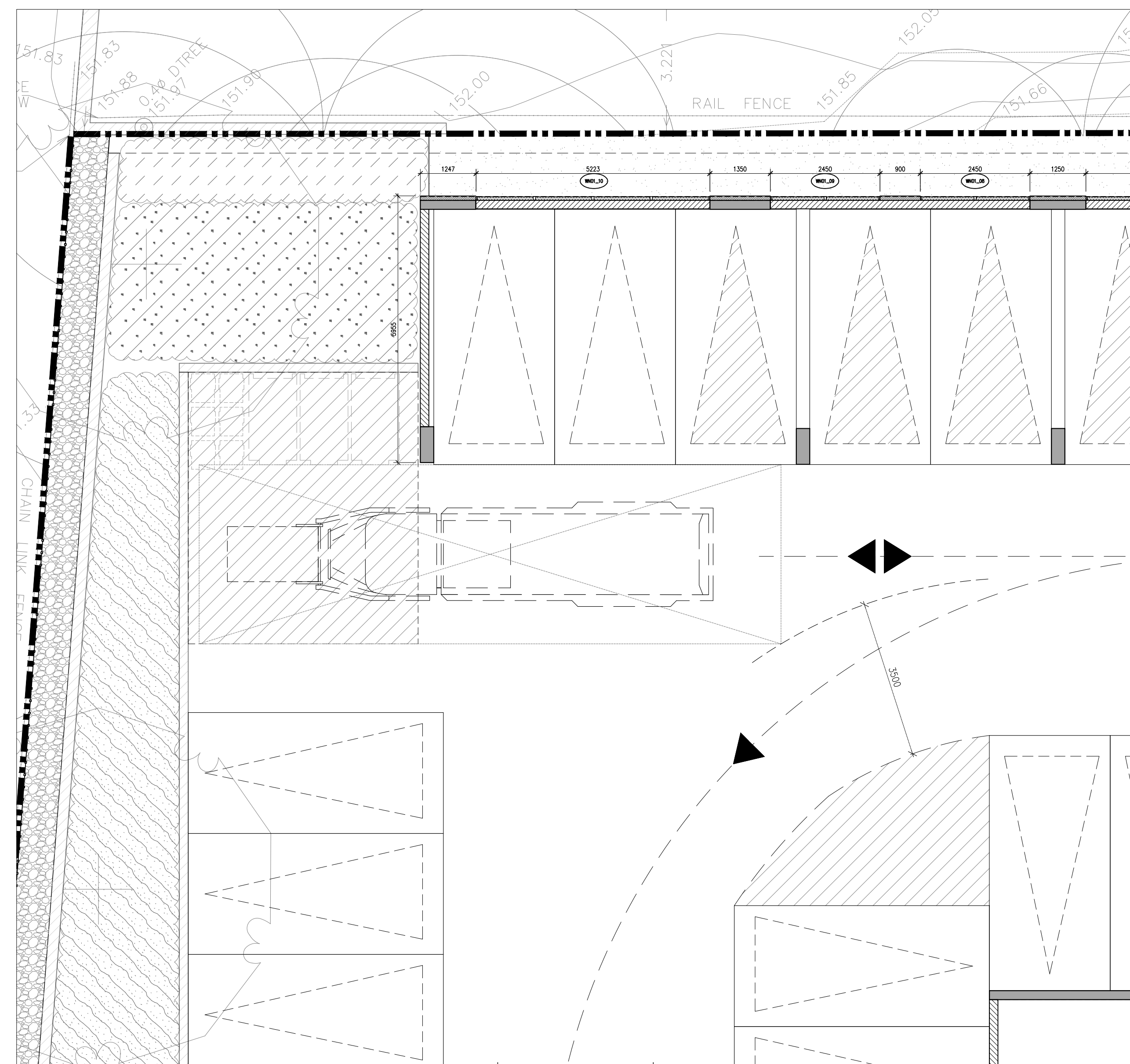
The Designer of these plans and specifications gives no warranty or representation to any party about the constructability of the represented items; all contractors or subcontractors must satisfy themselves when bidding and at all times that they can properly construct the work represented by these plans.

notes:

1 - garbage collection room



3 - garbage truck route



2 - staging area

- 5 re-issued for site plan approval 02.12.21
- 4 re-issued for site plan approval 12.17.20
- 3 re-issued for site plan approval 07.10.20
- 2 issued for spa coordination 06.23.20
- 1 issued for site plan approval 03.30.20

revisions:

architectural team :

mark zwicker
bonnie douthright



- planning: -
- structural: -
- electrical: -
- mechanical: -

landscape: land art design landscape architects inc.

site services: s. llewellyn & associates limited

owner: brixen developments inc.

project: 2430 Old Bronte Road
oakville, ontario

waste management plan

february.12.2021

n.f.s.

19-36

bd

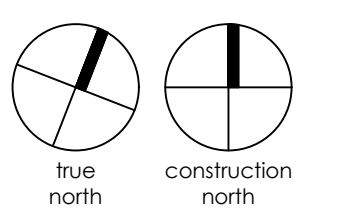
date:

scale:

project:

drawn by:

drawing number:



A203

Copyright of this drawing and design is reserved by the Designer. The drawing and all associated documents are an instrument of service by the Designer. The drawing and the information contained therein may not be reproduced in whole or in part without prior written permission of the Designer.

These Contract Documents are the property of the architect. The architect bears no responsibility for the interpretation of these documents by the Contractor. Upon written application the architect will provide written clarification or supplementary information regarding the intent of the Contract Documents. The architect will review Shop Drawings submitted by the Contractor for design conformance only.

Drawings are not to be scaled for construction. Contractor to verify all existing conditions and dimensions required to perform the work and report any discrepancies with the Contract Documents to the architect before commencing work.

Portions of exposed or finished mechanical or electrical devices, fittings, and fixtures are indicated on architectural drawings. The locations shown on the architectural drawings govern over the mechanical and electrical drawings. Those items not clearly located will be located as directed by the architect.

These drawings are not to be used for construction unless noted below as "Issued for Construction".

All work to be carried out in conformance with the Code and bylaws of the authority having jurisdiction.

The Designer of these plans and specifications gives no warranty or representation to any party about the constructability of the represented by them, all contractors or subcontractors must satisfy themselves when bidding and at all times that they can properly construct the work represented by these plans.

notes:

- 5 re-issued for site plan approval 02.12.21
- 4 re-issued for site plan approval 12.17.20
- 3 re-issued for site plan approval 07.10.20
- 2 issued for spa coordination 06.23.20
- 1 issued for site plan approval 03.30.20

revisions:

architectural team :

mark zwicker
bonnie douthright



- planning: -
- structural: -
- electrical: -
- mechanical: -

landscape: land art design landscape architects inc.

site services: s. llewellyn & associates limited

owner: brixen developments inc.

project:
2430 Old Bronte Road
Oakville, Ontario

ground floor plan

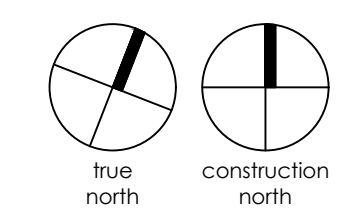
april.15.2021

1:100

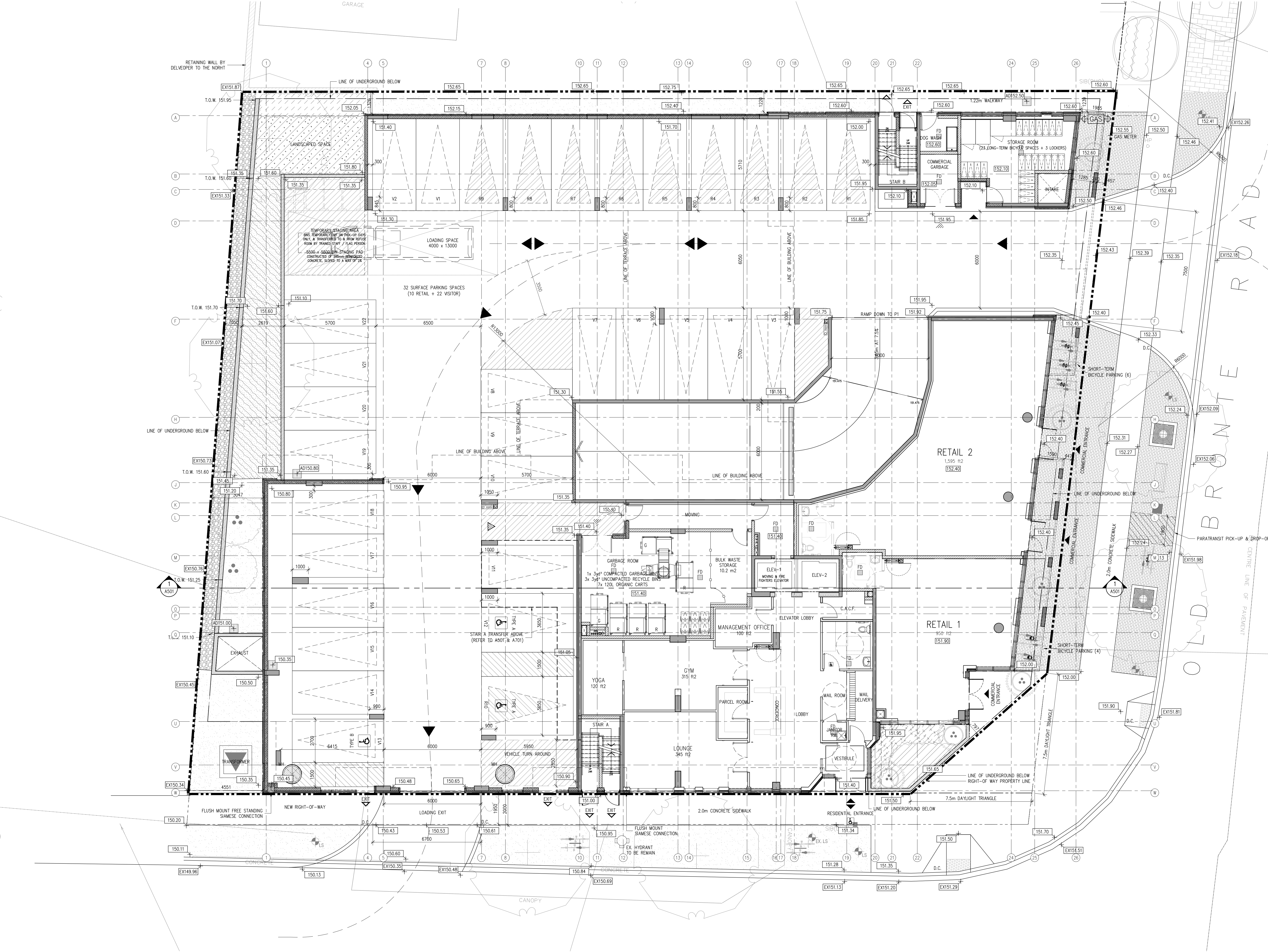
19-36

bd

drawing number:



A301



architecture unfolded
info@unfocled.ca
tel: (416) 601-5416
toronto, on. m6k1z8
348 dufferin street.

Copyright of this drawing and design is reserved by the Designer. The drawing and all associated documents are an instrument of service by the Designer. The drawing and the information contained therein may not be reproduced in whole or in part without prior written permission of the designer.

These Contract Documents are the property of the architect. The architect bears no responsibility for the interpretation of these documents by the Contractor. Upon written application the architect will provide written clarification or supplementary information regarding the intent of the Contract Documents. The architect will review Shop Drawings submitted by the Contractor for design conformance only.

Drawings are not to be scaled for construction. Contractor to verify all existing conditions and dimensions required to perform the work and report any discrepancies with the Contract Documents to the architect before commencing work.

Portions of exposed or finished mechanical or electrical devices, fittings, and fixtures are indicated on architectural drawings. The locations shown on the architectural drawings govern over the Mechanical and Electrical drawings. Those items not clearly located will be located as directed by the architect.

These drawings are not to be used for construction unless noted below as "Issued for Construction".

All work to be carried out in conformance with the Code and bylaws of the authorities having jurisdiction.

The Designer of these plans and specifications gives no warranty or representation to any party about the constructability of the represented by them, all contractors or subcontractors must satisfy themselves when bidding and of all times that they can properly construct the work represented by these plans.

notes:

- 5 re-issued for site plan approval 02.12.21
- 4 re-issued for site plan approval 12.17.20
- 3 re-issued for site plan approval 07.10.20
- 2 issued for spa coordination 06.23.20
- 1 issued for site plan approval 03.30.20

revisions:

architectural team :

mark zwicker
bonnie douthright



- planning: -
- structural: -
- electrical: -
- mechanical: -

landscape: land art design landscape architects inc.

site services: s. llewellyn & associates limited

owner: brixen developments inc.

project:
2430 Old Bronte Road
oakville, ontario

2nd floor plan

february.12.2021

1:100

19-36

bd

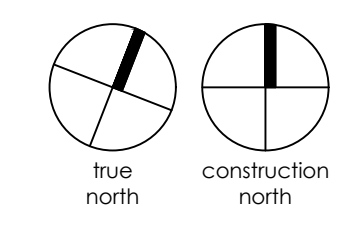
date:

scale:

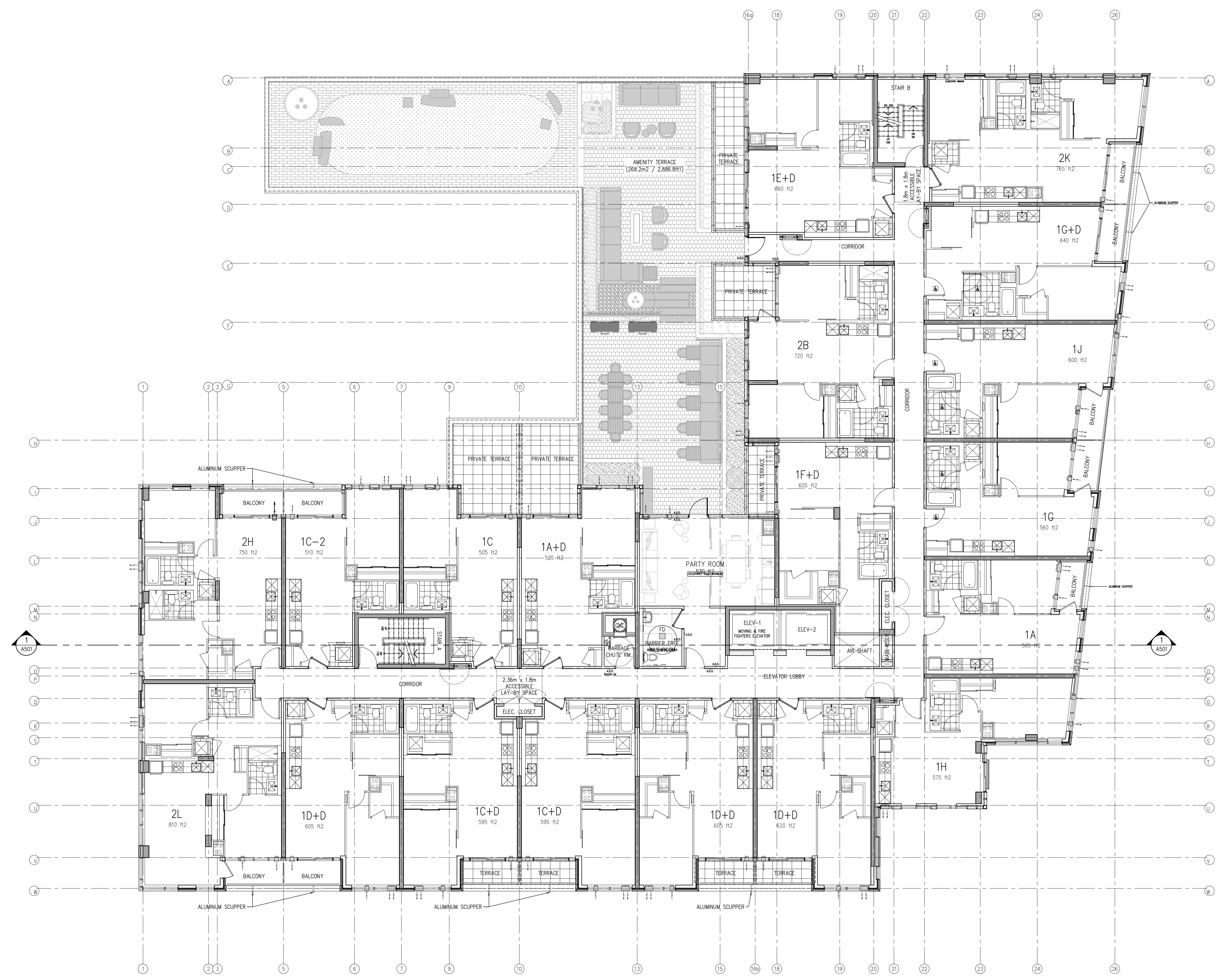
project:

drawn by:

drawing number:



A302





Copyright of this drawing and design is reserved by the Designer. The drawing and all associated documents are an instrument of service by the Designer. The drawing and the information contained therein may not be reproduced in whole or in part without prior written permission of the designer.

These Contract Documents are the property of the architect. The architect bears no responsibility for the interpretation of these documents by the Contractor. Upon written application the architect will provide written graphic clarification or supplementary information regarding the intent of the Contract Documents. The architect will review Shop Drawings submitted by the Contractor for design conformance only.

Drawings are not to be scaled for construction. Contractor to verify all existing conditions and dimensions required to perform the work and report any discrepancies with the Contract Documents to the architect before commencing work.

Portions of exposed or finished mechanical or electrical devices, fittings, and fixtures are indicated on architectural drawings. The locations shown on the architectural drawings govern over the Mechanical and Electrical drawings. Those items not clearly located will be located as directed by the architect.

These drawings are not to be used for construction unless noted below as "Issued for Construction".

All work to be carried out in conformance with the Code and bylaws of the authorities having jurisdiction.

The Designer of these plans and specifications gives no warranty or representation to any party about the constructability of the represented by them, all contractors or subcontractors must satisfy themselves when bidding and of all times that they can properly construct the work represented by these plans.

notes:

- 5 re-issued for site plan approval 02.12.21
- 4 re-issued for site plan approval 12.17.20
- 3 re-issued for site plan approval 07.10.20
- 2 issued for spa coordination 06.23.20
- 1 issued for site plan approval 03.30.20

revisions:

architectural team :

mark zwicker
bonnie douthright



planning: -
structural: -
electrical: -
mechanical: -

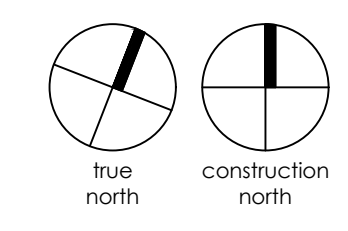
landscape: land art design landscape architects inc.
site services: s. llewellyn & associates limited
owner: brixen developments inc.

project: 2430 Old Bronte Road
oakville, ontario

3rd floor plan

february.12.2021 date:
1:100 scale:
19-36 project:
bd drawn by:

drawing number: A303





Copyright of this drawing and design is reserved by the Designer. The drawing and all associated documents are an instrument of service by the Designer. The drawing and the information contained therein may not be reproduced in whole or in part without prior written permission of the Designer.

These Contract Documents are the property of the architect. The architect bears no responsibility for the interpretation of these documents by the Contractor. Upon written application the architect will provide written graphic clarification or supplementary information regarding the intent of the Contract Documents. The architect will review Shop Drawings submitted by the Contractor for design conformance only.

Drawings are not to be scaled for construction. Contractor to verify all existing conditions and dimensions required to perform the work and report any discrepancies with the Contract Documents to the architect before commencing work.

Locations of exposed or finished mechanical or electrical devices, fittings, and fixtures are indicated on architectural drawings. The locations shown on the architectural drawings govern over the Mechanical and Electrical drawings. Those items not clearly located will be located as directed by the architect.

These drawings are not to be used for construction unless noted below as "Issued for Construction".

All work to be carried out in conformance with the Code and bylaws of the authorities having jurisdiction.

The Designer of these plans and specifications gives no warranty or representation to any party about the constructability of the represented by them, all contractors or subcontractors must satisfy themselves when bidding and of all times that they can properly construct the work represented by these plans.

notes:

- 5 re-issued for site plan approval 02.12.21
- 4 re-issued for site plan approval 12.17.20
- 3 re-issued for site plan approval 07.10.20
- 2 issued for spa coordination 06.23.20
- 1 issued for site plan approval 03.30.20

revisions:

architectural team :

mark zwicker
bonnie douthright



- planning: -
- structural: -
- electrical: -
- mechanical: -

landscape: land art design landscape architects inc.

site services: s. llewellyn & associates limited

owner: brixen developments inc.

project: 2430 Old Bronte Road
oakville, ontario

4th floor plan

february.12.2021

1:100

19-36

bd

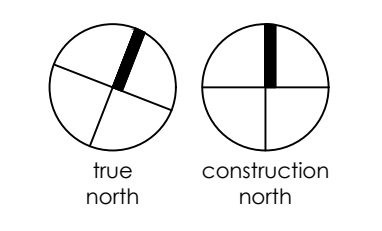
date:

scale:

project:

drawn by:

drawing number:



A304



Copyright of this drawing and design is reserved by the Designer. The drawing and all associated documents are an instrument of service by the Designer. The drawing and the information contained therein may not be reproduced in whole or in part without prior written permission of the Designer.

These Contract Documents are the property of the architect. The architect bears no responsibility for the interpretation of these documents by the Contractor. Upon written application the architect will provide written graphic clarification or supplementary information regarding the intent of the Contract Documents. The architect will review Shop Drawings submitted by the Contractor for design conformance only.

Drawings are not to be scaled for construction. Contractor to verify all existing conditions and dimensions required to perform the work and report any discrepancies with the Contract Documents to the architect before commencing work.

Locations of exposed or finished mechanical or electrical devices, fittings, and fixtures are indicated on architectural drawings. The locations shown on the architectural drawings govern over the Mechanical and Electrical drawings. Those items not clearly located will be located as directed by the architect.

These drawings are not to be used for construction unless noted below as "Issued for Construction".

All work to be carried out in conformance with the Code and bylaws of the authorities having jurisdiction.

The Designer of these plans and specifications gives no warranty or representation to any party about the constructibility of the represented by them, all contractors or subcontractors must satisfy themselves when bidding and at all times that they can properly construct the work represented by these plans.

notes:

- 5 re-issued for site plan approval 02.12.21
- 4 re-issued for site plan approval 12.17.20
- 3 re-issued for site plan approval 07.10.20
- 2 issued for spa coordination 06.23.20
- 1 issued for site plan approval 03.30.20

revisions:

architectural team :

mark zwicker
bonnie douthright



- planning: -
- structural: -
- electrical: -
- mechanical: -

landscape: land art design landscape architects inc.

site services: s. llewellyn & associates limited

owner: brixen developments inc.

project: 2430 Old Bronte Road
oakville, ontario

5th floor plan

february.12.2021

1:100

19-36

bd

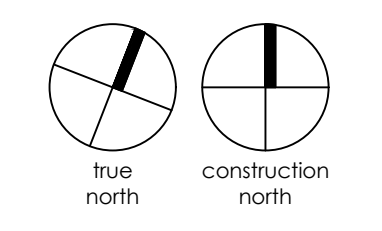
date:

scale:

project:

drawn by:

drawing number:



A305



Copyright of this drawing and design is reserved by the Designer. The drawing and all associated documents are an instrument of service by the Designer. The drawing and the information contained therein may not be reproduced in whole or in part without prior written permission of the Designer.

These Contract Documents are the property of the architect. The architect bears no responsibility for the interpretation of these documents by the Contractor. Upon written application the architect will provide written graphic clarification or supplementary information regarding the intent of the Contract Documents. The architect will review Shop Drawings submitted by the Contractor for design conformance only.

Drawings are not to be scaled for construction. Contractor to verify all existing conditions and dimensions required to perform the work and report any discrepancies with the Contract Documents to the architect before commencing work.

Portions of exposed or finished mechanical or electrical devices, fittings, and fixtures are indicated on architectural drawings. The locations shown on the architectural drawings govern over the Mechanical and Electrical drawings. Those items not clearly located will be located as directed by the architect.

These drawings are not to be used for construction unless noted below as "Issued for Construction".

All work to be carried out in conformance with the Code and bylaws of the authorities having jurisdiction.

The Designer of these plans and specifications gives no warranty or representation to any party about the constructibility of the represented by them, all contractors or subcontractors must satisfy themselves when bidding and at all times that they can properly construct the work represented by these plans.

notes:

- 5 re-issued for site plan approval 02.12.21
- 4 re-issued for site plan approval 12.17.20
- 3 re-issued for site plan approval 07.10.20
- 2 issued for spa coordination 06.23.20
- 1 issued for site plan approval 03.30.20

revisions:

architectural team :

mark zwicker
bonnie douthright



- planning: -
- structural: -
- electrical: -
- mechanical: -

landscape: land art design landscape architects inc.

site services: s. llewellyn & associates limited

owner: brixen developments inc.

project: 2430 Old Bronte Road
oakville, ontario

6th floor plan

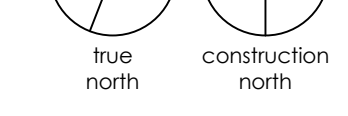
february.12.2021

1:100

19-36

bd

true north



date:

scale:

project:

drawn by:

drawing number:

A306



Copyright of this drawing and design is reserved by the Designer. The drawing and all associated documents are an instrument of service by the Designer. The drawing and the information contained therein may not be reproduced in whole or in part without prior written permission of the Designer.

These Contract Documents are the property of the architect. The architect bears no responsibility for the interpretation of these documents by the Contractor. Upon written application the architect will provide written graphic clarification or supplementary information regarding the intent of the Contract Documents. The architect will review Shop Drawings submitted by the Contractor for design conformance only.

Drawings are not to be scaled for construction. Contractor to verify all existing conditions and dimensions required to perform the work and report any discrepancies with the Contract Documents to the architect before commencing work.

Portions of exposed or finished mechanical or electrical devices, fittings, and fixtures are indicated on architectural drawings. The locations shown on the architectural drawings govern over the Mechanical and Electrical drawings. Those items not clearly located will be located as directed by the architect.

These drawings are not to be used for construction unless noted below as "Issued for Construction".

All work to be carried out in conformance with the Code and bylaws of the authorities having jurisdiction.

The Designer of these plans and specifications gives no warranty or representation to any party about the constructibility of the represented by them, all contractors or subcontractors must satisfy themselves when bidding and at all times that they can properly construct the work represented by these plans.

notes:

- 5 re-issued for site plan approval 02.12.21
- 4 re-issued for site plan approval 12.17.20
- 3 re-issued for site plan approval 07.10.20
- 2 issued for spa coordination 06.23.20
- 1 issued for site plan approval 03.30.20

revisions:

architectural team :

mark zwicker
bonnie douthright



- planning: -
- structural: -
- electrical: -
- mechanical: -

landscape: land art design landscape architects inc.

site services: s. llewellyn & associates limited

owner: brixen developments inc.

project: 2430 Old Bronte Road
oakville, ontario

7th floor plan

february.12.2021

1:100

19-36

bd

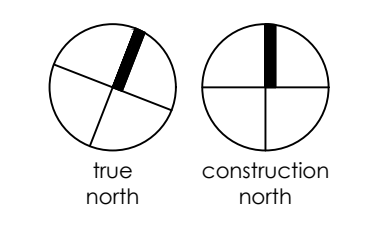
date:

scale:

project:

drawn by:

drawing number:



A307

Copyright of this drawing and design is reserved by the Designer. The drawing and all associated documents are an instrument of service by the Designer. The drawing and the information contained therein may not be reproduced in whole or in part without prior written permission of the designer.

These Contract Documents are the property of the architect. The architect bears no responsibility for the interpretation of these documents by the Contractor. Upon written application the architect will provide written graphic clarification or supplementary information regarding the intent of the Contract Documents. The architect will review Shop Drawings submitted by the Contractor for design conformance only.

Drawings are not to be scaled for construction. Contractor to verify all existing conditions and dimensions required to perform the work and report any discrepancies with the Contract Documents to the architect before commencing work.

Portions of exposed or finished mechanical or electrical devices, fittings, and fixtures are indicated on architectural drawings. The locations shown on the architectural drawings govern over the Mechanical and Electrical drawings. Those items not clearly located will be located as directed by the architect.

These drawings are not to be used for construction unless noted below as "Issued for Construction".

All work to be carried out in conformance with the Code and bylaws of the authorities having jurisdiction.

The Designer of these plans and specifications gives no warranty or representation to any party about the constructability of the represented by them, all contractors or subcontractors must satisfy themselves when bidding and of all times that they can properly construct the work represented by these plans.

notes:

- 5 re-issued for site plan approval 02.12.21
- 4 re-issued for site plan approval 12.17.20
- 3 re-issued for site plan approval 07.10.20
- 2 issued for spa coordination 06.23.20
- 1 issued for site plan approval 03.30.20

revisions:

architectural team :

mark zwicker
bonnie douthright



- planning: -
- structural: -
- electrical: -
- mechanical: -

landscape: land art design landscape architects inc.

site services: s. llewellyn & associates limited

owner: brixen developments inc.

project:
2430 Old Bronte Road
oakville, ontario

8th floor plan

february.12.2021

1:100

19-36

bd

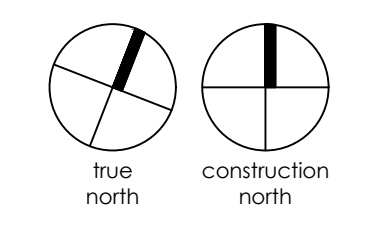
date:

scale:

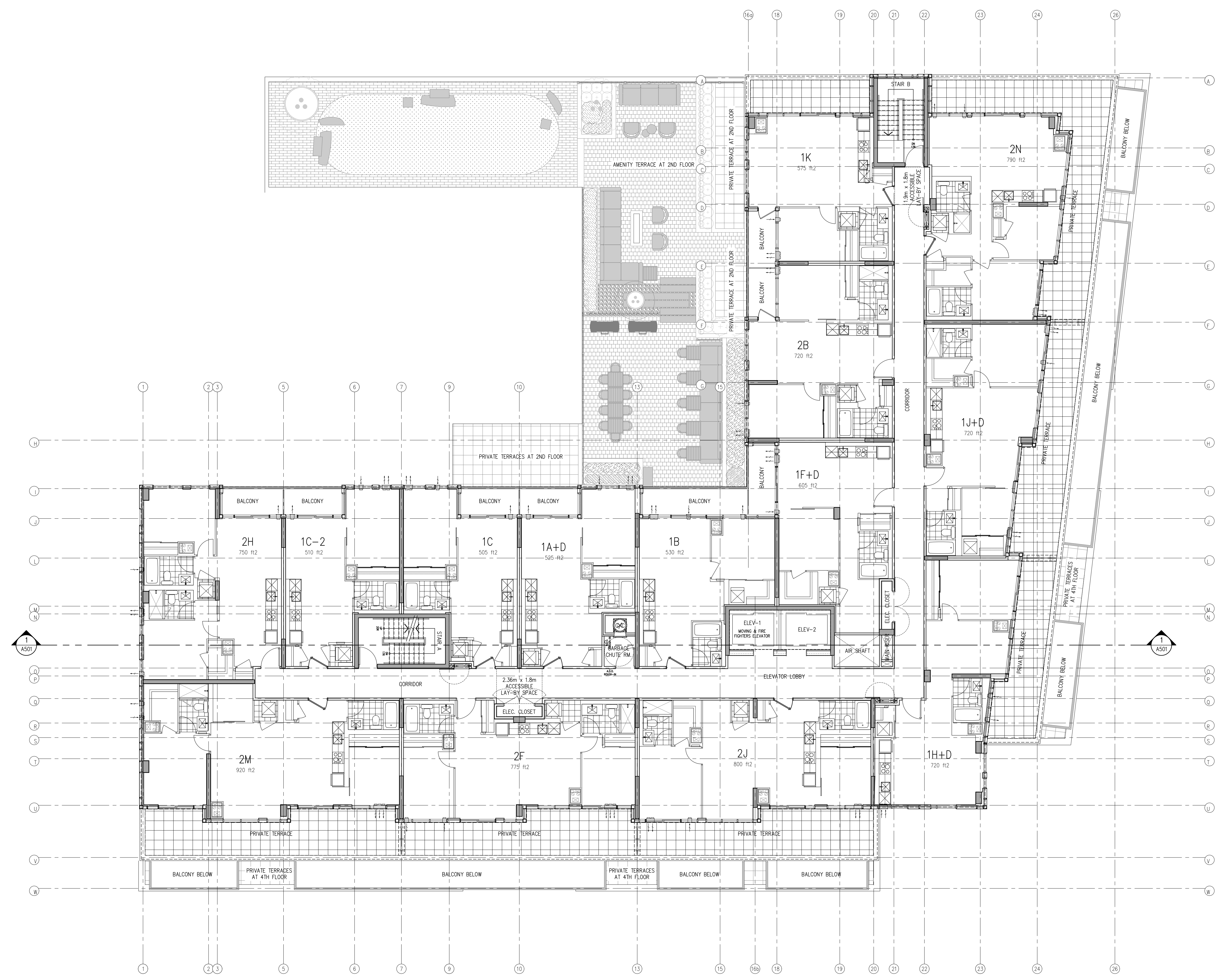
project:

drawn by:

drawing number:



A308



Copyright of this drawing and design is reserved by the Designer. The drawing and all associated documents are an instrument of service by the Designer. The drawing and the information contained therein may not be reproduced in whole or in part without prior written permission of the designer.

These Contract Documents are the property of the architect. The architect bears no responsibility for the interpretation of these documents by the Contractor. Upon written application the architect will provide written clarification or supplementary information regarding the intent of the Contract Documents. The architect will review Shop Drawings submitted by the Contractor for design conformance only.

Drawings are not to be scaled for construction. Contractor to verify all existing conditions and dimensions required to perform the work and report any discrepancies with the Contract Documents to the architect before commencing work.

Portions of exposed or finished mechanical or electrical devices, fittings, and fixtures are indicated on architectural drawings. The locations shown on the architectural drawings govern over the Mechanical and Electrical drawings. Those items not clearly located will be located as directed by the architect.

These drawings are not to be used for construction unless noted below as "Issued for Construction".

All work to be carried out in conformance with the Code and bylaws of the authorities having jurisdiction.

The Designer of these plans and specifications gives no warranty or representation to any party about the constructability of the represented by them, all contractors or subcontractors must satisfy themselves when bidding and of all times that they can properly construct the work represented by these plans.

notes:

5	re-issued for site plan approval	02.12.21
4	re-issued for site plan approval	12.17.20
3	re-issued for site plan approval	07.10.20
2	issued for spa coordination	06.23.20
1	issued for site plan approval	03.30.20

revisions:

architectural team :

mark zwicker
bonnie douthright



planning:
-
structural:
-
electrical:
-
mechanical:
-

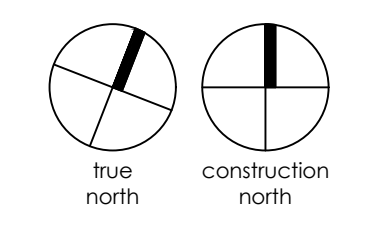
landscape:
land art design landscape architects inc.
site services:
s. llewellyn & associates limited
owner:
brixen developments inc.

project:
2430 Old Bronte Road
oakville, ontario

mechanical
penthouse plan

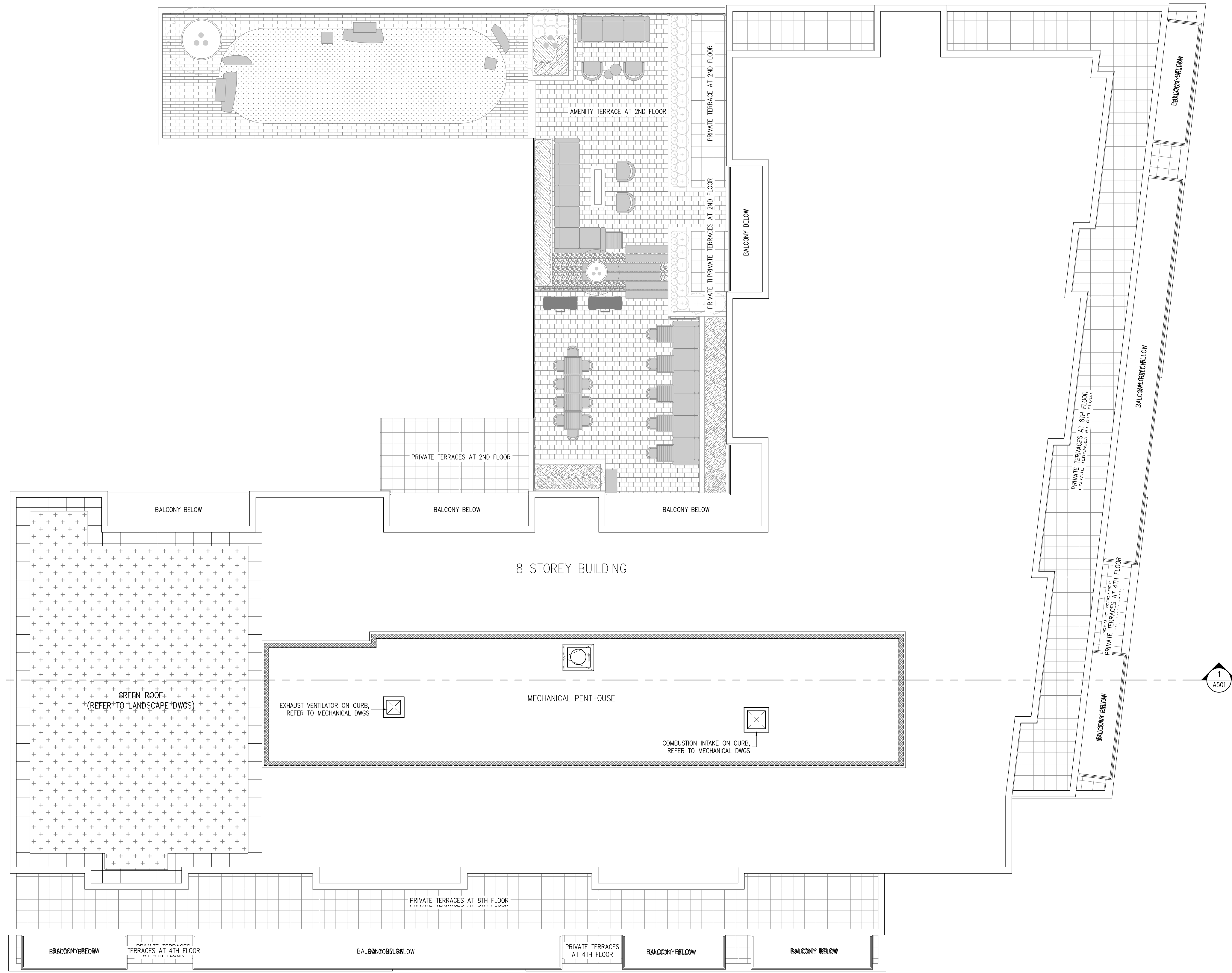
february.12.2021
1:100
19-36
bd

date:
scale:
project:
drawn by:



drawing number:
A309





Copyright of this drawing and design is reserved by the Designer. The drawing and all associated documents are an instrument of service by the Designer. The drawing and the information contained therein may not be reproduced in whole or in part without prior written permission of the designer.

These Contract Documents are the property of the architect. The architect bears no responsibility for the interpretation of these documents by the Contractor. Upon written application the architect will provide written graphic clarification or supplementary information regarding the intent of the Contract Documents. The architect will review Shop Drawings submitted by the Contractor for design conformance only.

Drawings are not to be scaled for construction. Contractor to verify all existing conditions and dimensions required to perform the work and report any discrepancies with the Contract Documents to the architect before commencing work.

Portions of exposed or finished mechanical or electrical devices, fittings, and fixtures are indicated on architectural drawings. The locations shown on the architectural drawings govern over the Mechanical and Electrical drawings. Those items not clearly located will be located as directed by the architect.

These drawings are not to be used for construction unless noted below as "Issued for Construction".

All work to be carried out in conformance with the Code and bylaws of the authorities having jurisdiction.

The Designer of these plans and specifications gives no warranty or representation to any party about the constructability of the represented by them, all contractors or subcontractors must satisfy themselves when bidding and of all times that they can properly construct the work represented by these plans.

notes:

5	re-issued for site plan approval	02.12.21
4	re-issued for site plan approval	12.17.20
3	re-issued for site plan approval	07.10.20
2	issued for spa coordination	06.23.20
1	issued for site plan approval	03.30.20

revisions:

architectural team :

mark zwicker
bonnie douthwright



planning:
-
structural:
-
electrical:
-
mechanical:
-

landscape:
land art design landscape architects inc.

site services:
s. llewellyn & associates limited

owner:
brixen developments inc.

project:
2430 Old Bronte Road
oakville, ontario

roof plan

february.12.2021

1:100

19-36

bd



date:

scale:

project:

drawn by:

drawing number:

A310

MATERIAL LEGEND

	MATERIAL	COLOUR AND FINISH		MATERIAL	COLOUR AND FINISH
1	METAL PANEL	CHARCOAL (SAMPLES TO BE SUBMITTED TO ARCH. FOR APPROVAL)	7	GLASS RAILING	ACRYNAR - BLACK (UC40577) CRYSTAL GRAY CLEAR GLASS
2	METAL PANEL	ACRYNAR - BONE WHITE (UC113812) (DURANAR TO BE USED FOR CURTAIN WALL, SAMPLE TO BE SUBMITTED TO ARCH.)	8	SPANDREL PANEL	EARLY FROST - VITRO CLEAR (3-3656)
3	VISION GLASS	SOFT BLUE CLEAR GLASS	9	STUCCO	DURABOND - GRAY (BM2121-10)
4	MULLION	ACRYNAR - BLACK (BFB100B) (DURANAR TO BE USED FOR CURTAIN WALL, SAMPLE TO BE SUBMITTED TO ARCH.)	10	METAL SCREEN	ACRYNAR - BLACK (BFB100B)
5	MULLION	ACRYNAR - BONE WHITE (UC113812) (DURANAR TO BE USED FOR CURTAIN WALL, SAMPLE TO BE SUBMITTED TO ARCH.)	11	ENTRANCE FEATURE	TRESPA
6	MASONRY	BRAMPTON BRICK - QNYX PRP (FINESSE)			

Copyright of this drawing and design is reserved by the Designer. The drawing and all associated documents are an instrument of service by the Designer. The drawing and the information contained therein may not be reproduced in whole or in part without prior written permission of the designer.

These Contract Documents are the property of the architect. The architect bears no responsibility for the interpretation of these documents by the Contractor. Upon written application the architect will provide written clarification or supplementary information regarding the intent of the Contract Documents. The architect will review Shop Drawings submitted by the Contractor for design conformance only.

Drawings are not to be scaled for construction. Contractor to verify all existing conditions and dimensions required to perform the work and report any discrepancies with the Contract Documents to the architect before commencing work.

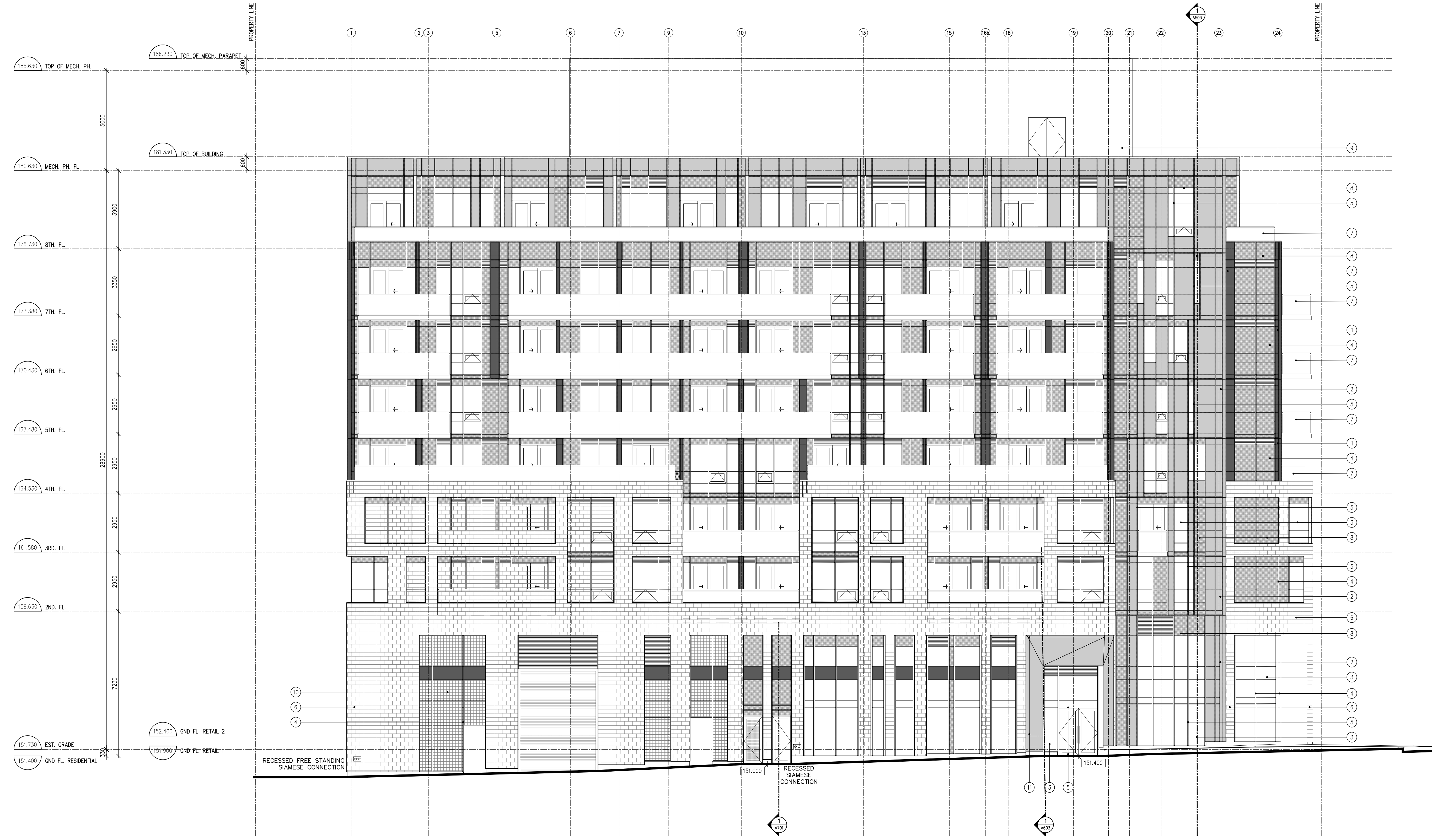
Locations of exposed or finished mechanical or electrical devices, fittings, and fixtures are indicated on architectural drawings. The locations shown on the architectural drawings govern over the mechanical and electrical drawings. Those items not clearly located will be located as directed by the architect.

These drawings are not to be used for construction unless noted below as "Issued for Construction".

All work to be carried out in conformance with the Code and bylaws of the authorities having jurisdiction.

The Designer of these plans and specifications gives no warranty or representation to any party about the constructability of the represented by them. All contractors or subcontractors must satisfy themselves when bidding and of all times that they can properly construct the work represented by these plans.

notes:



- 5 re-issued for site plan approval 02.12.21
- 4 re-issued for site plan approval 12.17.20
- 3 re-issued for site plan approval 07.10.20
- 2 issued for spa coordination 06.23.20
- 1 issued for site plan approval 03.30.20

revisions:

architectural team :

mark zwicker
bonnie douthwright



- planning: -
- structural: -
- electrical: -
- mechanical: -

landscape: land art design landscape architects inc.

site services: s. llewellyn & associates limited

owner: brixen developments inc.

project: 2430 Old Bronte Road
oakville, ontario

south elevation

february.12.2021
1:100
19-36
bd

date:
scale:
project:
drawn by:

drawing number:

A401

MATERIAL LEGEND					
	MATERIAL	COLOUR AND FINISH		MATERIAL	COLOUR AND FINISH
1	METAL PANEL	CHARCOAL (SAMPLES TO BE SUBMITTED TO ARCH. FOR APPROVAL)	7	GLASS RAILING	ACRYNAR - BLACK (UC40577) CRYSTAL GRAY CLEAR GLASS
2	METAL PANEL	ACRYNAR - BONE WHITE (UC113812) (DURANAR TO BE USED FOR CURTAIN WALL, SAMPLE TO BE SUBMITTED TO ARCH.)	8	SPANDREL PANEL	EARLY FROST - VITRO CLEAR (3-3656)
3	VISION GLASS	SOFT BLUE CLEAR GLASS	9	STUCCO	DURABOND - GRAY (BM2121-10)
4	MULLION	ACRYNAR - BLACK (BFB100B) (DURANAR TO BE USED FOR CURTAIN WALL, SAMPLE TO BE SUBMITTED TO ARCH.)	10	METAL SCREEN	ACRYNAR - BLACK (BFB100B)
5	MULLION	ACRYNAR - BONE WHITE (UC113812) (DURANAR TO BE USED FOR CURTAIN WALL, SAMPLE TO BE SUBMITTED TO ARCH.)	11	ENTRANCE FEATURE	TRESPA
6	MASONRY	BRAMPTON BRICK - QNYX PRP (FINESSE)			

Copyright of this drawing and design is reserved by the Designer. The drawing and all associated documents are an instrument of service by the Designer. The drawing and the information contained therein may not be reproduced in whole or in part without prior written permission of the designer.

These Contract Documents are the property of the architect. The architect bears no responsibility for the interpretation of these documents by the Contractor. Upon written application the architect will provide written graphic clarification or supplementary information regarding the intent of the Contract Documents. The architect will review Shop Drawings submitted by the Contractor for design conformance only.

Drawings are not to be scaled for construction. Contractor to verify all existing conditions and dimensions required to perform the work and report any discrepancies with the Contract Documents to the architect before commencing work.

Locations of exposed or finished mechanical or electrical devices, fittings, and fixtures are indicated on architectural drawings. The locations shown on the architectural drawings govern over the Mechanical and Electrical drawings. Those items not clearly located will be located as directed by the architect.

These drawings are not to be used for construction unless noted below as "Issued for Construction".

All work to be carried out in conformance with the Code and bylaws of the authorities having jurisdiction.

The Designer of these plans and specifications gives no warranty or representation to any party about the constructability of the represented by them, all contractors or subcontractors must satisfy themselves when bidding and of all times that they can properly construct the work represented by these plans.

notes:



- 5 re-issued for site plan approval 02.12.21
- 4 re-issued for site plan approval 12.17.20
- 3 re-issued for site plan approval 07.10.20
- 2 issued for spa coordination 06.23.20
- 1 issued for site plan approval 03.30.20

revisions:

architectural team :

mark zwicker
bonnie douthwright



- planning: -
- structural: -
- electrical: -
- mechanical: -

landscape:
land art design landscape architects inc.

site services:
s. llewellyn & associates limited

owner:
brixen developments inc.

project:
2430 Old Bronte Road
oakville, ontario

east elevation

february.12.2021

1:100

19-36

bd

date:

scale:

project:

drawn by:

drawing number:

A402

MATERIAL LEGEND					
	MATERIAL	COLOUR AND FINISH		MATERIAL	COLOUR AND FINISH
①	METAL PANEL	CHARCOAL (SAMPLES TO BE SUBMITTED TO ARCH. FOR APPROVAL)	⑦	GLASS RAILING	ACRYNAR – BLACK (UC40577) CRYSTAL GRAY CLEAR GLASS
②	METAL PANEL	ACRYNAR – BONE WHITE (UC113812) (DURANAR TO BE USED FOR CURTAIN WALL, SAMPLE TO BE SUBMITTED TO ARCH.)	⑧	SPANDREL PANEL	EARLY FROST – VITRO CLEAR (3–3656)
③	VISION GLASS	SOFT BLUE CLEAR GLASS	⑨	STUCCO	DURABOND – GRAY (BM2121–10)
④	MULLION	ACRYNAR – BLACK (BFB100B) (DURANAR TO BE USED FOR CURTAIN WALL, SAMPLE TO BE SUBMITTED TO ARCH.)	⑩	METAL SCREEN	ACRYNAR – BLACK (BFB100B)
⑤	MULLION	ACRYNAR – BONE WHITE (UC113812) (DURANAR TO BE USED FOR CURTAIN WALL, SAMPLE TO BE SUBMITTED TO ARCH.)	⑪	ENTRANCE FEATURE	TRESPA
⑥	MASONRY	BRAMPTON BRICK – QNYX PRP (FINESSE)			

Copyright of this drawing and design is reserved by the Designer. The drawing and all associated documents are an instrument of service by the Designer. The drawing and the information contained therein may not be reproduced in whole or in part without prior written permission of the designer.

These Contract Documents are the property of the architect. The architect bears no responsibility for the interpretation of these documents by the Contractor. Upon written application the architect will provide written graphic clarification or supplementary information regarding the intent of the Contract Documents. The architect will review Shop Drawings submitted by the Contractor for design performance only.

Drawings are not to be scaled for construction. Contractor to verify all existing conditions and dimensions required to perform the work and report any discrepancies with the Contract Documents to the architect before commencing work.

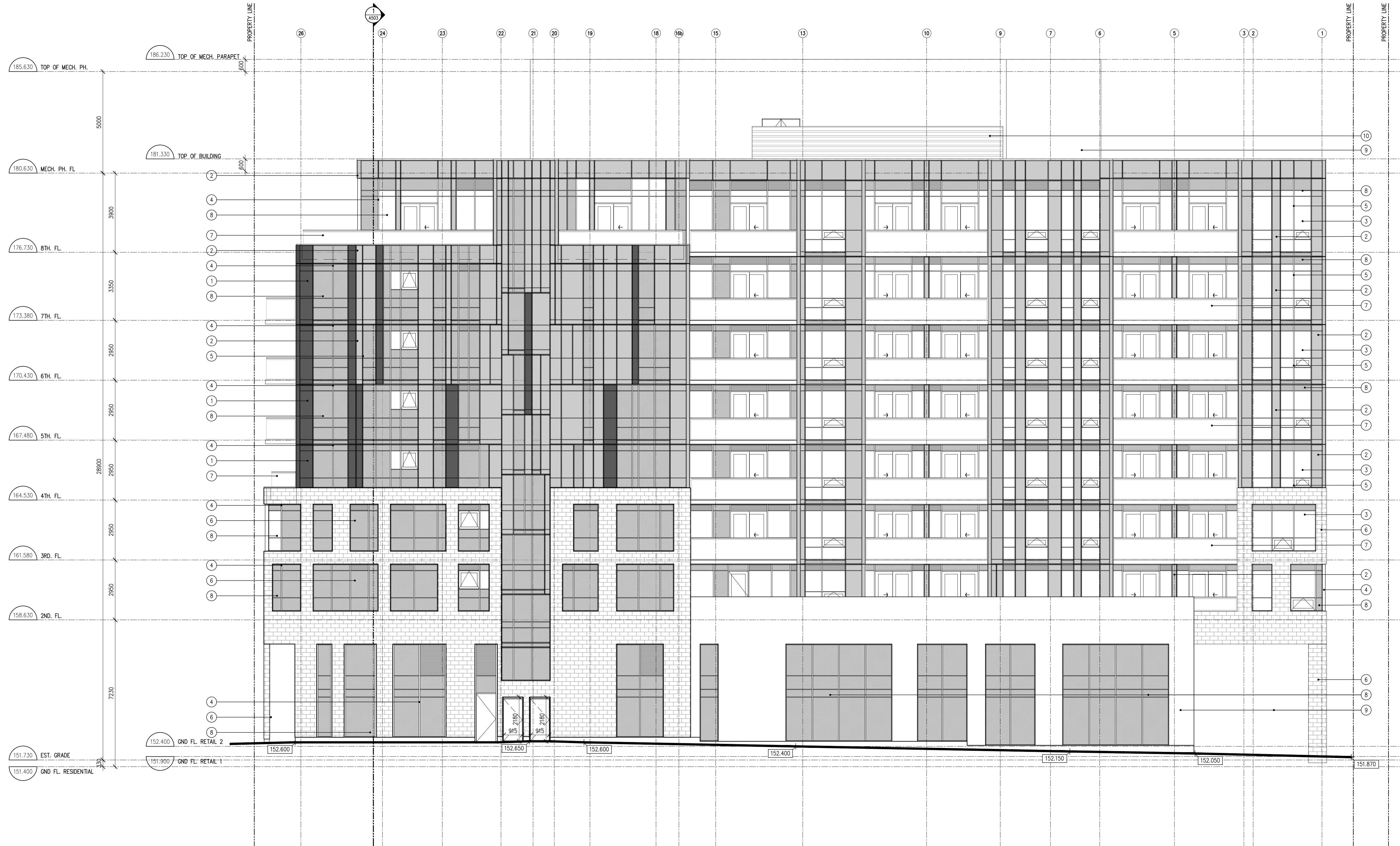
Locations of exposed or finished mechanical or electrical devices, fittings, and fixtures are indicated on architectural drawings. The locations shown on the architectural drawings govern over the Mechanical and Electrical drawings. Those items not clearly located will be located as directed by the architect.

These drawings are not to be used for construction unless noted below as "Issued for Construction".

All work to be carried out in conformance with the Code and bylaws of the authorities having jurisdiction.

The Designer of these plans and specifications gives no warranty or representation to any party about the constructability of the represented by them. All contractors or subcontractors must satisfy themselves when bidding and of all times that they can properly construct the work represented by these plans.

notes:



- 5 re-issued for site plan approval 02.12.21
- 4 re-issued for site plan approval 12.17.20
- 3 re-issued for site plan approval 07.10.20
- 2 issued for spa coordination 06.23.20
- 1 issued for site plan approval 03.30.20

revisions:

architectural team :

mark zwicker
bonnie douthwright



- planning: -
- structural: -
- electrical: -
- mechanical: -

landscape: land art design landscape architects inc.

site services: s. llewellyn & associates limited

owner: brixen developments inc.

project:
2430 Old Bronte Road
oakville, ontario

north elevation

february.12.2021

1:100

19-36

bd

date:

scale:

project:

drawn by:

drawing number:

A403

MATERIAL LEGEND					
	MATERIAL	COLOUR AND FINISH		MATERIAL	COLOUR AND FINISH
1	METAL PANEL	CHARCOAL (SAMPLES TO BE SUBMITTED TO ARCH. FOR APPROVAL)	7	GLASS RAILING	ACRYNAR - BLACK (UC40577) CRYSTAL GRAY CLEAR GLASS
2	METAL PANEL	ACRYNAR - BONE WHITE (UC113812) (DURANAR TO BE USED FOR CURTAIN WALL, SAMPLE TO BE SUBMITTED TO ARCH.)	8	SPANDREL PANEL	EARLY FROST - VITRO CLEAR (3-3656)
3	VISION GLASS	SOFT BLUE CLEAR GLASS	9	STUCCO	DURABOND - GRAY (BM2121-10)
4	MULLION	ACRYNAR - BLACK (BFB100B) (DURANAR TO BE USED FOR CURTAIN WALL, SAMPLE TO BE SUBMITTED TO ARCH.)	10	METAL SCREEN	ACRYNAR - BLACK (BFB100B)
5	MULLION	ACRYNAR - BONE WHITE (UC113812) (DURANAR TO BE USED FOR CURTAIN WALL, SAMPLE TO BE SUBMITTED TO ARCH.)	11	ENTRANCE FEATURE	TRESPA
6	MASONRY	BRAMPTON BRICK - QNYX PRP (FINESSE)			

Copyright of this drawing and design is reserved by the Designer. The drawing and all associated documents are an instrument of service by the Designer. The drawing and the information contained therein may not be reproduced in whole or in part without prior written permission of the designer.

These Contract Documents are the property of the architect. The architect bears no responsibility for the interpretation of these documents by the Contractor. Upon written application the architect will provide written clarification or supplementary information regarding the intent of the Contract Documents. The architect will review Shop Drawings submitted by the Contractor for design conformance only.

Drawings are not to be scaled for construction. Contractor to verify all existing conditions and dimensions required to perform the work and report any discrepancies with the Contract Documents to the architect before commencing work.

Portions of exposed or finished mechanical or electrical devices, fittings, and fixtures are indicated on architectural drawings. The locations shown on the architectural drawings govern over the Mechanical and Electrical drawings. Those items not clearly located will be located as directed by the architect.

These drawings are not to be used for construction unless noted below as "Issued for Construction".

All work to be carried out in conformance with the Code and bylaws of the authority having jurisdiction.

The Designer of these plans and specifications gives no warranty or representation to any party about the constructability of the represented by them. All contractors or subcontractors must satisfy themselves when bidding and at all times that they can properly construct the work represented by these plans.

notes:



- 5 re-issued for site plan approval 02.12.21
- 4 re-issued for site plan approval 12.17.20
- 3 re-issued for site plan approval 07.10.20
- 2 issued for spa coordination 06.23.20
- 1 issued for site plan approval 03.30.20

revisions:

architectural team :

mark zwicker
bonnie douthwright



- planning: -
- structural: -
- electrical: -
- mechanical: -

landscape:
land art design landscape architects inc.
site services:
s. llewellyn & associates limited
owner:
brixen developments inc.

project:
2430 Old Bronte Road
Oakville, Ontario

west elevation

february.12.2021
1:100
19-36
bd

date:
scale:
project:
drawn by:

drawing number:

A404



Copyright of this drawing and design is reserved by the Designer. The drawing and all associated documents are an instrument of service by the Designer. The drawing and the information contained therein may not be reproduced in whole or in part without prior written permission of the designer.

These Contract Documents are the property of the architect. The architect bears no responsibility for the interpretation of these documents by the Contractor. Upon written application the architect will provide written clarification or supplementary information regarding the intent of the Contract Documents. The architect will review Shop Drawings submitted by the Contractor for design conformance only.

Drawings are not to be scaled for construction. Contractor to verify all existing conditions and dimensions required to perform the work and report any discrepancies with the Contract Documents to the architect before commencing work.

Locations of exposed or finished mechanical or electrical devices, fittings, and fixtures are indicated on architectural drawings. The locations shown on the architectural drawings govern over the Mechanical and Electrical drawings. Those items not clearly located will be located as directed by the architect.

These drawings are not to be used for construction unless noted below as "Issued for Construction".

All work to be carried out in conformance with the Code and bylaws of the authorities having jurisdiction.

The Designer of these plans and specifications gives no warranty or representation to any party about the constructability of the represented by them, all contractors or subcontractors must satisfy themselves when bidding and of all times that they can properly construct the work represented by these plans.

notes:

5	re-issued for site plan approval	02.12.21
4	re-issued for site plan approval	12.17.20
3	re-issued for site plan approval	07.10.20
2	issued for spa coordination	06.23.20
1	issued for site plan approval	03.30.20

revisions:

architectural team :

mark zwicker
bonnie douthwright



planning:
-

structural:
-

electrical:
-

mechanical:
-

landscape:
land art design landscape architects inc.

site services:
s. llewellyn & associates limited

owner:
brixen developments inc.

project:
2430 Old Bronte Road
oakville, ontario

south elevation

february.12.2021
1:50
19-36
bd

date:
scale:
project:
drawn by:
drawing number:

A405

RECESSED
SIAMESE
CONNECTION

Copyright of this drawing and design is reserved by the Designer. The drawing and all associated documents are an instrument of service by the Designer. The drawing and the information contained therein may not be reproduced in whole or in part without prior written permission of the designer.

These Contract Documents are the property of the architect. The architect bears no responsibility for the interpretation of these documents by the Contractor. Upon written application the architect will provide written clarification or supplementary information regarding the intent of the Contract Documents. The architect will review Shop Drawings submitted by the Contractor for design conformance only.

Drawings are not to be scaled for construction. Contractor to verify all existing conditions and dimensions required to perform the work and report any discrepancies with the Contract Documents to the architect before commencing work.

Locations of exposed or finished mechanical or electrical devices, fittings, and fixtures are indicated on architectural drawings. The locations shown on the architectural drawings govern over the mechanical and electrical drawings. Those items not clearly located will be located as directed by the architect.

These drawings are not to be used for construction unless noted below as "Issued for Construction".

All work to be carried out in conformance with the Code and bylaws of the authorities having jurisdiction.

The Designer of these plans and specifications gives no warranty or representation to any party about the constructability of the represented by them. All contractors or subcontractors must satisfy themselves when bidding and at all times that they can properly construct the work represented by these plans.

notes:

- 5 re-issued for site plan approval 02.12.21
- 4 re-issued for site plan approval 12.17.20
- 3 re-issued for site plan approval 07.10.20
- 2 issued for spa coordination 06.23.20
- 1 issued for site plan approval 03.30.20

revisions:

architectural team :

mark zwicker
bonnie douthwright



- planning: -
- structural: -
- electrical: -
- mechanical: -

landscape: land art design landscape architects inc.

site services: s. llewellyn & associates limited

owner: brixen developments inc.

project:
2430 Old Bronte Road
oakville, ontario

east elevation

february.12.2021
1:50
19-36
bd

date:
scale:
project:
drawn by:

drawing number:

A406

architecture unfolded
info@unfolded.ca
tel: (416)601-5416
m6k1z8
toronto, on.
348 dufferin street.



MATERIAL LEGEND					
	MATERIAL	COLOUR AND FINISH		MATERIAL	COLOUR AND FINISH
①	METAL PANEL	CHARCOAL (SAMPLES TO BE SUBMITTED TO ARCH. FOR APPROVAL)	⑦	GLASS RAILING	ACRYNAR – BLACK (UC40577) CRYSTAL GRAY CLEAR GLASS
②	METAL PANEL	ACRYNAR – BONE WHITE (UC113812) (DURANAR TO BE USED FOR CURTAIN WALL, SAMPLE TO BE SUBMITTED TO ARCH.)	⑧	SPANDREL PANEL	EARLY FROST – VITRO CLEAR (3–3656)
③	VISION GLASS	SOFT BLUE CLEAR GLASS	⑨	STUCCO	DURABOND – GRAY (BM2121–10)
④	MULLION	ACRYNAR – BLACK (BFB100B) (DURANAR TO BE USED FOR CURTAIN WALL, SAMPLE TO BE SUBMITTED TO ARCH.)	⑩	METAL SCREEN	ACRYNAR – BLACK (BFB100B)
⑤	MULLION	ACRYNAR – BONE WHITE (UC113812) (DURANAR TO BE USED FOR CURTAIN WALL, SAMPLE TO BE SUBMITTED TO ARCH.)	⑪	ENTRANCE FEATURE	TRESPA
⑥	MASONRY	BRAMPTON BRICK – QNYX PRP (FINESSE)			



Copyright of this drawing and design is reserved by the Designer. The drawing and all associated documents are an instrument of service by the Designer. The drawing and the information contained therein may not be reproduced in whole or in part without prior written permission of the designer.

These Contract Documents are the property of the architect. The architect bears no responsibility for the interpretation of these documents by the Contractor. Upon written application the architect will provide written graphic clarification or supplementary information regarding the intent of the Contract Documents. The architect will review Shop Drawings submitted by the Contractor for design conformance only.

Drawings are not to be scaled for construction. Contractor to verify all existing conditions and dimensions required to perform the work and report any discrepancies with the Contract Documents to the architect before commencing work.

Positions of exposed or finished mechanical or electrical devices, fittings, and fixtures are indicated on architectural drawings. The locations shown on the architectural drawings govern over the Mechanical and Electrical drawings. Those items not clearly located will be located as directed by the architect.

These drawings are not to be used for construction unless noted below as "Issued for Construction".

All work to be carried out in conformance with the Code and bylaws of the authorities having jurisdiction.

The Designer of these plans and specifications gives no warranty or representation to any party about the constructability of the represented by them. All contractors or subcontractors must satisfy themselves when bidding and of all times that they can properly construct the work represented by these plans.

notes:

- 5 re-issued for site plan approval 02.12.21
- 4 re-issued for site plan approval 12.17.20
- 3 re-issued for site plan approval 07.10.20
- 2 issued for spa coordination 06.23.20
- 1 issued for site plan approval 03.30.20

revisions:

architectural team :

mark zwicker
bonnie douthright



planning:
-
structural:
-
electrical:
-
mechanical:
-

landscape:
land art design landscape architects inc.
site services:
s. llewellyn & associates limited
owner:
brixen developments inc.

project:
2430 Old Bronte Road
oakville, ontario

perspective rendering

february.12.2021
n.f.s.
19-36
bd

date:
scale:
project:
drawn by:

drawing number:

A408

Copyright of this drawing and design is reserved by the Designer. The drawing and all associated documents are an instrument of service by the Designer. The drawing and the information contained therein may not be reproduced in whole or in part without prior written permission of the designer.

These Contract Documents are the property of the architect. The architect bears no responsibility for the interpretation of these documents by the Contractor. Upon written application the architect will provide written graphic clarification or supplementary information regarding the intent of the Contract Documents. The architect will review Shop Drawings submitted by the Contractor for design conformance only.

Drawings are not to be scaled for construction. Contractor to verify all existing conditions and dimensions required to perform the work and report any discrepancies with the Contract Documents to the architect before commencing work.

Positions of exposed or finished mechanical or electrical devices, fittings, and fixtures are indicated on architectural drawings. The locations shown on the architectural drawings govern over the Mechanical and Electrical drawings. Those items not clearly located will be located as directed by the architect.

These drawings are not to be used for construction unless noted below as "Issued for Construction".

All work to be carried out in conformance with the Code and bylaws of the authorities having jurisdiction.

The Designer of these plans and specifications gives no warranty or representation to any party about the constructability of the represented by them, all contractors or subcontractors must satisfy themselves when bidding and at all times that they can properly construct the work represented by these plans.

notes:

- 5 re-issued for site plan approval 02.12.21
- 4 re-issued for site plan approval 12.17.20
- 3 re-issued for site plan approval 07.10.20
- 2 issued for spa coordination 06.23.20
- 1 issued for site plan approval 03.30.20

architectural team :

mark zwicker
bonnie douthwright



- planning: -
- structural: -
- electrical: -
- mechanical: -

landscape: land art design landscape architects inc.

site services: s. llewellyn & associates limited

owner: brixen developments inc.

project:
2430 Old Bronte Road
oakville, ontario

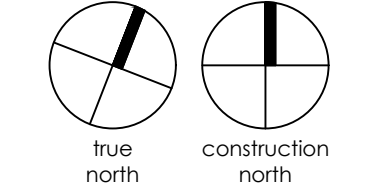
building section

february.12.2021

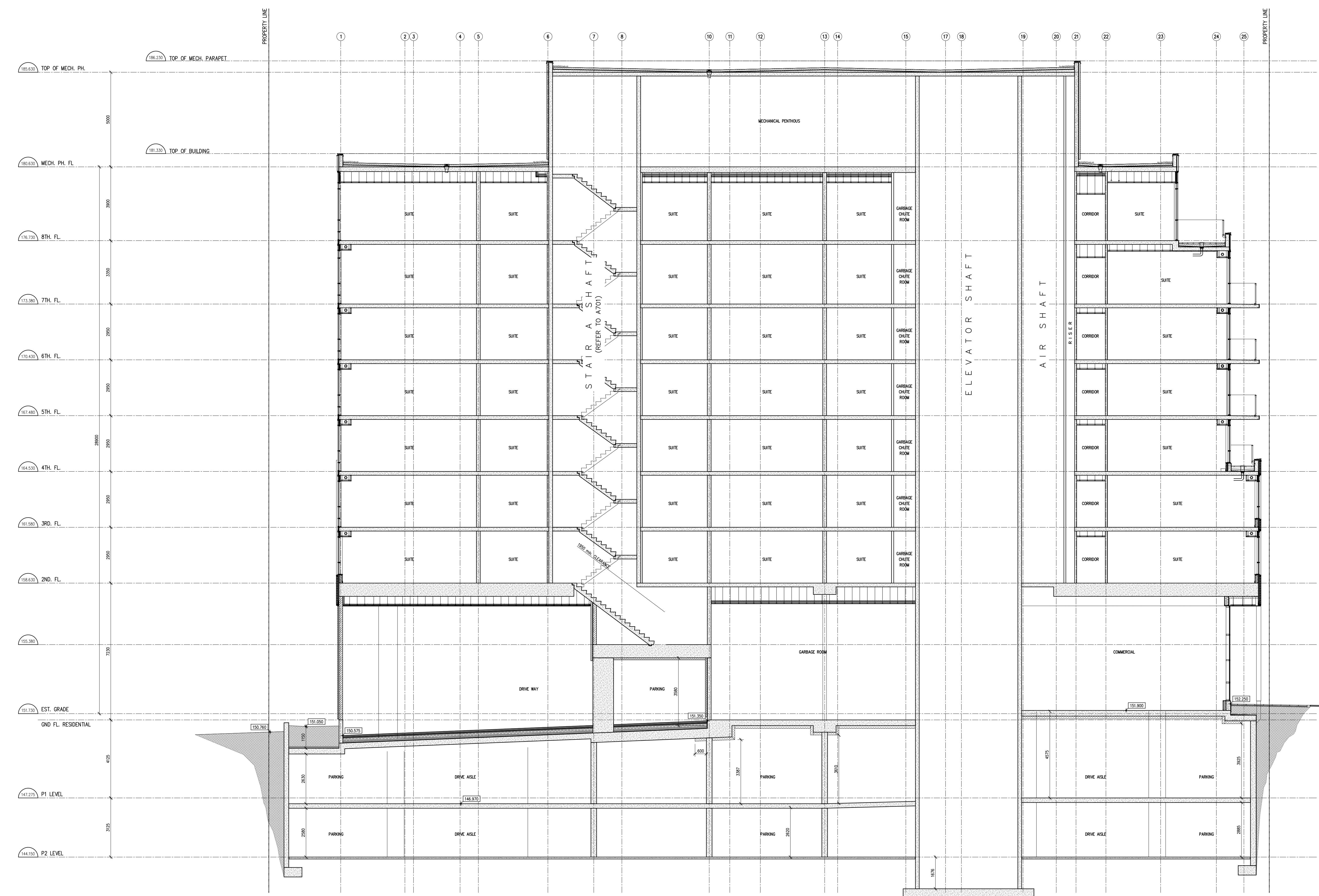
scale:
1:100
19-36

bd

drawn by:



drawing number:
A501



architecture unfolded
info@unifolied.ca
tel: (416) 601-5416
m6k1z8
toronto, on.
348 dufferin street.